

PSST:

*Don't forget to share your
Smock top with us using
#SimplySewingMag*



<https://vk.com/sewingroom>



THE SMOCK TOP

Give your wardrobe a boost with an everyday smock top that you can style all year-round.

You can't beat a classic!

THE SMOCK TOP

Sew a wardrobe classic with this simple and satisfying pattern. You can pair this with anything in your wardrobe – we love it styled with skinny jeans, but worn with a flowy maxi it makes for the ultimate easy summer outfit.

Made up in a cotton lawn this top is a casual, everyday staple, but swap that for silk and you've got yourself a piece of evening wear you'll feel amazing in! With only six pattern pieces to sew, you can have your Smock Top sewn up in no time, so a last-minute invite needn't cause panic! You'll feel cool and comfortable in an instant.

Fancy making this your own? With simple adaptations you can customise this design. You could add a breast pocket, extend the sleeves, opt for contrast cuffs or even extend the hem to turn it into a dress. However you make your Smock Top, share it with us on Instagram using #SimplySewingMagazine. Happy sewing!

YOU WILL NEED

Main fabric:

- Sizes 6–20: 2.3mx150cm
- Sizes 22–30: 2.5mx150cm
- Lightweight iron-on interfacing: 40x90cm
- Basic sewing kit
- Matching thread

NOTES

- Seam allowance is 1.5cm unless otherwise stated.

RECOMMENDED FABRICS

- Viscose, silk, Tencel or fine cottons such as lawn.

FINISHED BACK LENGTH

- Approximately 71.5cm

FABRIC USED

- Mirage Forest cotton gauze by Atelier Brunette from atelierbrunette.com

Show off your new top using #SmoekTop



SPEEDY SEW

This casual V-neckline makes for an easy sew that you can whip up quickly.

https://vk.com/sew_room

TURN UP THE VOLUME

Gathered cuffed sleeves mean volume! We love a subtle detail like this.

THE SMOCK TOP

TOP

FRONT



BACK



SIZES
6-30

US 2-26
EUR 34-58

Easy weekend sew



THE SMOCK TOP

Pair this top with your favourite jeans to feel instantly made up. It's as easy to style as it is to sew...

PACK INCLUDES

- Pattern sheet x1
- Instruction sheet

YOU WILL NEED

Main fabric:

- Sizes 6–20: 2.3mx150cm
- Sizes 22–30: 2.5mx150cm
- Lightweight iron-on interfacing: 40x90cm
- Matching thread

NOTES

- Seam allowance is 1.5cm unless otherwise stated.

RECOMMENDED FABRICS

- Viscose, silk, tencel or fine cottons such as lawn.

FINISHED BACK LENGTH

- Approximately 71.5cm



https://vk.com/sew_room

SIZE CHART

| SIZE | UK | 6 | 8 | 10 | 12 | 14 | 16 | 18 | 20 | 22 | 24 | 26 | 28 | 30 |
|-------------------|-----|------|-----|------|------|-----|------|-----|-----|-----|-----|-----|-----|-----|
| | US | 2 | 4 | 6 | 8 | 10 | 12 | 14 | 16 | 18 | 20 | 22 | 24 | 26 |
| | EUR | 34 | 36 | 38 | 40 | 42 | 44 | 46 | 48 | 50 | 52 | 54 | 56 | 58 |
| BUST | cm | 75 | 79 | 83 | 87 | 92 | 97 | 102 | 107 | 112 | 117 | 122 | 127 | 132 |
| | in | 29½ | 31 | 32½ | 34¼ | 36½ | 38½ | 40½ | 42½ | 44 | 46 | 48 | 50 | 52 |
| WAIST | cm | 58 | 61 | 64 | 67 | 71 | 76 | 81 | 87 | 93 | 99 | 105 | 111 | 117 |
| | in | 22 | 24 | 25¼ | 26¾ | 28 | 30 | 32 | 34¼ | 36¾ | 39 | 41¾ | 43¾ | 46 |
| HIP | cm | 80 | 84 | 88 | 92 | 97 | 102 | 107 | 112 | 117 | 122 | 127 | 132 | 137 |
| | in | 31½ | 33 | 34¾ | 36¼ | 38½ | 40½ | 42½ | 44 | 46 | 48 | 50 | 52 | 54 |
| BACK-WAIST LENGTH | cm | 39.5 | 40 | 40.5 | 41.5 | 42 | 42.5 | 43 | 44 | 45 | 46 | 47 | 48 | 49 |
| | in | 15½ | 15¾ | 16 | 16¾ | 16½ | 16¾ | 17 | 17¾ | 17¾ | 18½ | 18½ | 19 | 19¾ |

Simply
Sewing
FRESH IDEAS WITH FABRIC

WWW.GATHERED.HOW/SIMPLYSEWING

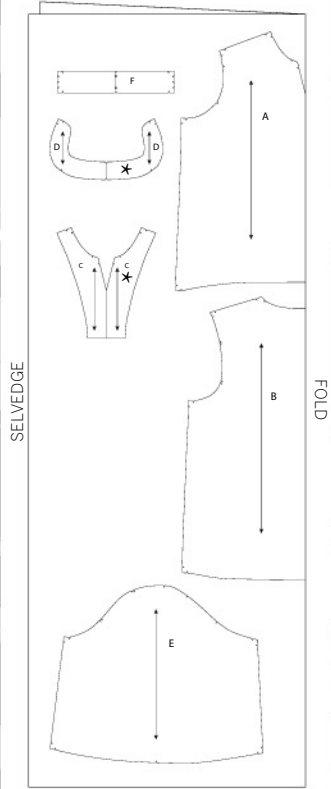
© Printed in the UK for *Simply Sewing*. Pattern by Becky Perry (Pattern Paper Scissors) for Prima UK, 2022.

Supplied by Our Media Ltd (an Immediate Group Company), Bristol, BS1 4ST.

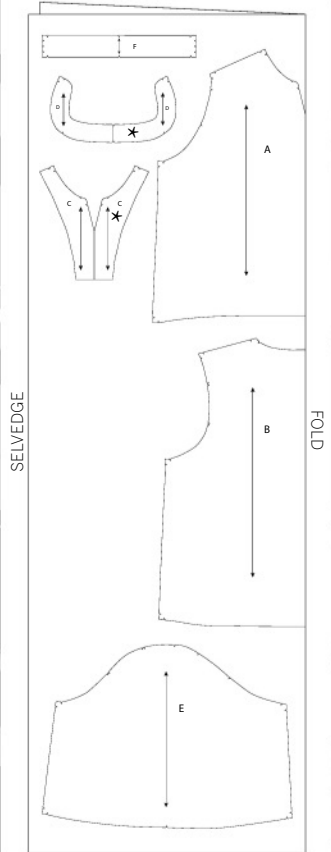
For individual, private use only and not for commercial or manufacturing purposes. Not for resale.

CUTTING LAYOUTS

MAIN FABRIC (SIZES 6-20)
150CM WIDE



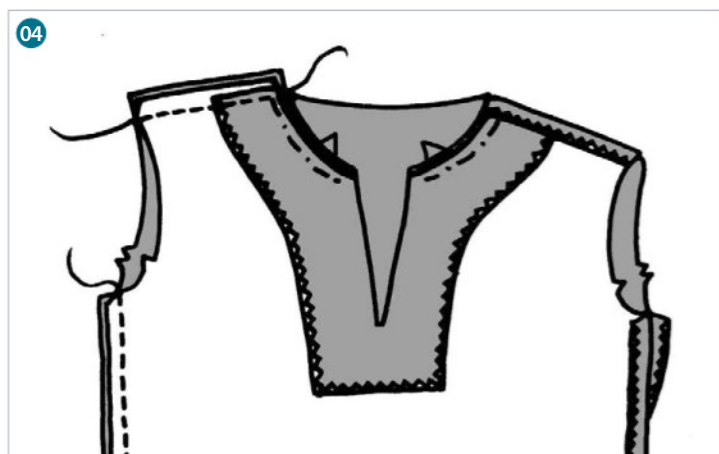
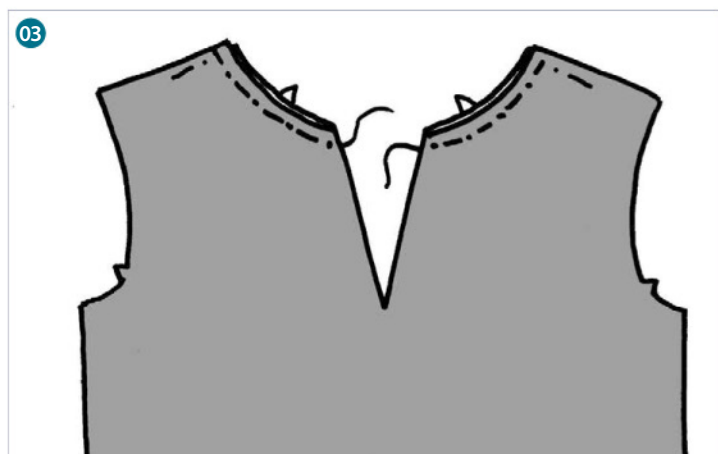
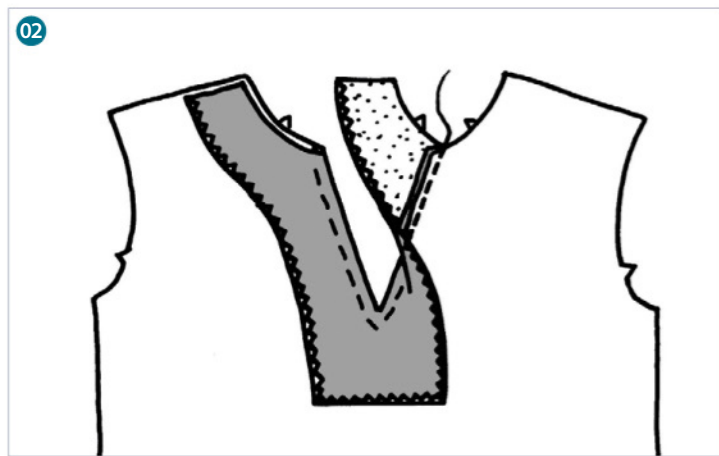
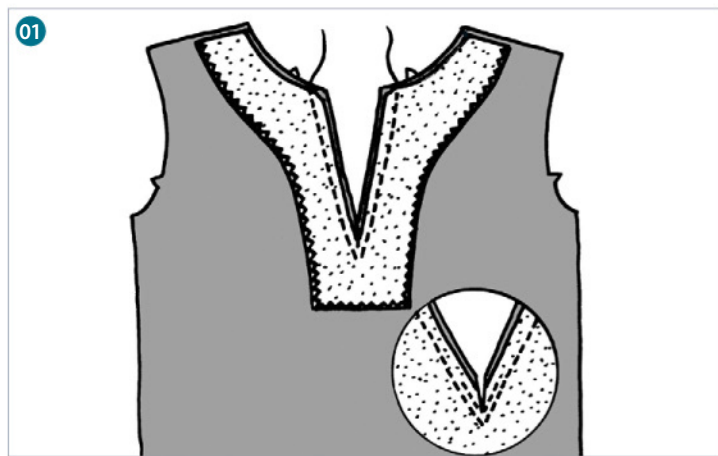
MAIN FABRIC (SIZES 22-30)
150CM WIDE



*For Front Facing (C) cut through one layer of fabric only, flipping the pattern piece to cut on the fold. For Collar (D) cut through both layers to cut two Collars, flipping the pattern piece to cut on the fold.



ROCK TOP



https://vk.com/sew_room

STITCHING TERMS

RS/WS: Right side/wrong side of the fabric. The right side usually has the print, design or texture and the wrong side is usually plain or duller in appearance.

Finish the seams: Finish the raw edges with a zigzag stitch or an overlocker.

Press: Pressing fabric is placing the iron down, holding it for a few seconds, lifting it and placing it down again. Ironing is the movement of sliding the iron back and forth to remove creases.

Staystitch: Stitching in areas prone to stretching such as necklines to hold the fabric in shape while it is being worked on.

Toile: A test garment, often made from calico or muslin to check the fit or test a pattern before the real fabric is used. Known as a muslin in the US.

For more sewing terms, visit gathered.how/sewing-glossary

CUTTING OUT

Step one From the main fabric cut:

Front (A): One on fold

Back (B): One on fold

Front Facing (C): One on fold

Collar (D): Two on fold

Sleeve (E): One pair

Sleeve Binding (F): One pair

STITCHING NOTES

Pin or tack the main pieces together first and try on to check the fit. Mark any alterations that are needed before starting to sew. Stitch all seams with RS of fabric together, taking 1.5cm seam allowances unless stated otherwise.

MAKING THE TOP

SEWING THE FACINGS

Step one Press interfacing to the wrong side (WS) of the Front Facing. Neaten the outer edges of the Front Facing. Matching notches, pin and stitch the Front Facing to Front around front slit, taking a single small stitch across the base of the slit. Work a second row of stitching around the slit for reinforcement. Trim the seam allowances and snip right to the base of the slit. **01**

Step two Press seam allowance on the slit towards the Front Facing. Working from the right side (RS) of the bodice, stitch close to the seam through the Front Facing and seam allowances only. **02**

Step three Turn the Front Facing to the inside of the garment and tack the front neckline and shoulder seams together. **03**

Step four Matching notches, pin and stitch the Front to the Back at the side and shoulder seams. Neaten seam allowances and press them open. **04**

SEWING THE COLLAR

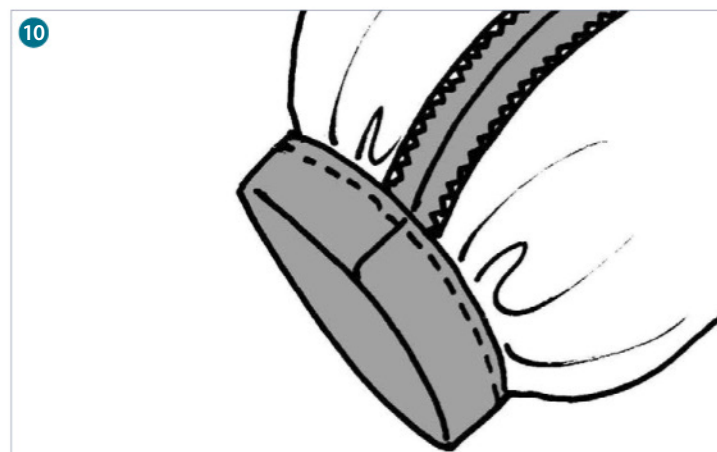
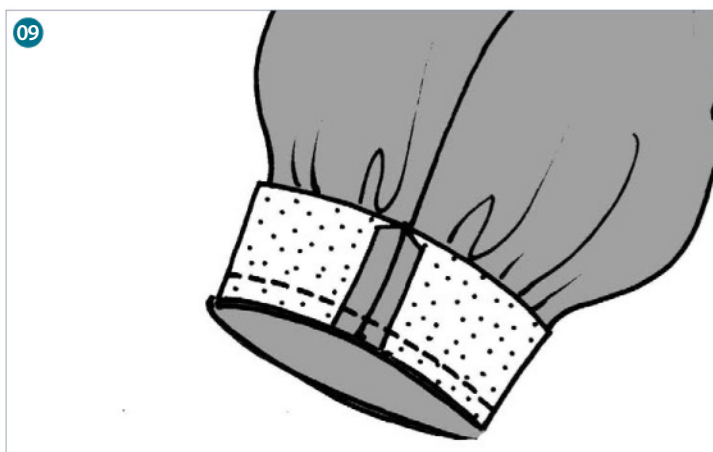
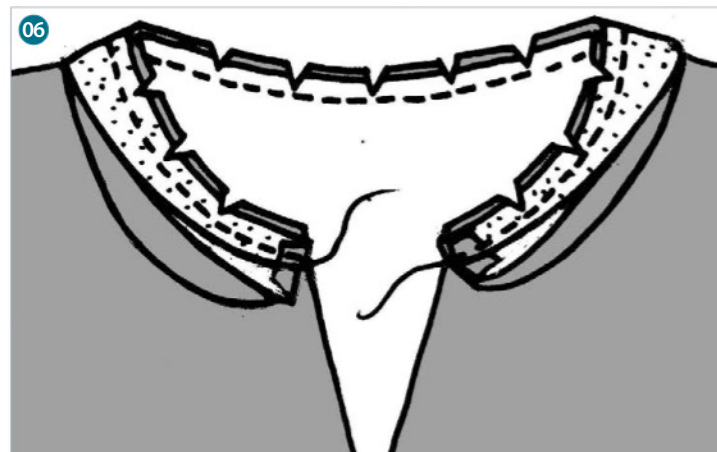
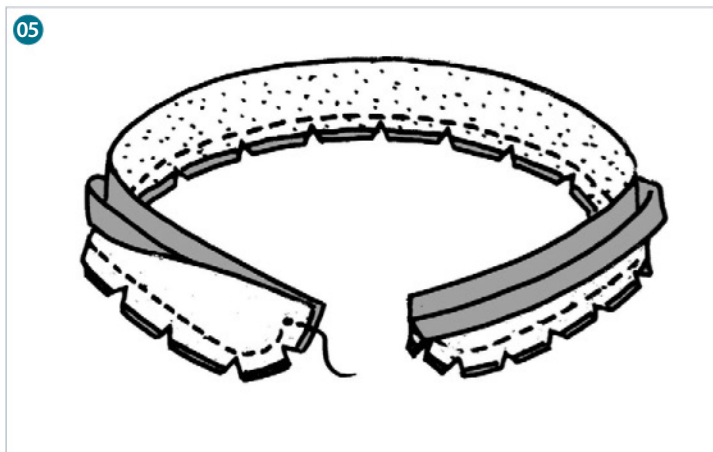
Step one Press interfacing to the WS of one Collar. Pin and stitch the Collar pieces together around the top curved edge. Trim away the seam allowance and clip around the curve. Turn through so RS are facing out and press. **05**

Step two With the collar notches at the shoulder seams, pin and stitch the interfaced side of the Collar to neck edge of top. Trim seam allowances and clip around the curve. **06**

Step three Press seam allowances towards the Collar. Turn under the seam allowances on the free edge of the Collar. Pin in place over the neck seam. Slipstitch in place. **07**

SEWING THE SLEEVES

Step one To make the Sleeves, pin and stitch the underarm seams RS together.



https://vk.com/sew_room



Neaten the seam allowances and press the seams open. Using two rows of long stitch, draw up Sleeve ease gathers at the sleevehead as indicated by notches. Ensure gathering is distributed equally. ⁰⁸

Step two Add gathering at the Sleeve hem using the same method (to match the Sleeve Binding measurement).

Step three Press interfacing to WS of the Sleeve Binding pieces. Pin and stitch sides of each Sleeve Binding to form a loop. Trim the seams and press them open. To attach the Sleeve Bindings, with side seams matching, pin one edge of Sleeve Binding to the lower edge of a Sleeve, drawing up the Sleeve gathers to fit the Sleeve Binding and distributing the gathers evenly. Pin and stitch. ⁰⁹

Step four Trim seam allowances and press towards the Sleeve Binding. Press under the seam allowance on the free edge of the Sleeve Binding. Fold the Sleeve Binding onto WS to cover seam. Turn and, working from the RS, stitch the free edge of the Sleeve Binding in place close to seamline, taking care to catch in edge of the Sleeve Binding underneath. ¹⁰

Step five To insert the Sleeves, turn the top WS out and the Sleeve RS out. Matching notches at side seams and shoulder points, pin and stitch the Sleeves into the armholes, drawing up the gathers evenly. Trim seam allowances and neaten them together. Press the seam allowances into the Sleeve. ¹¹

FINISHING

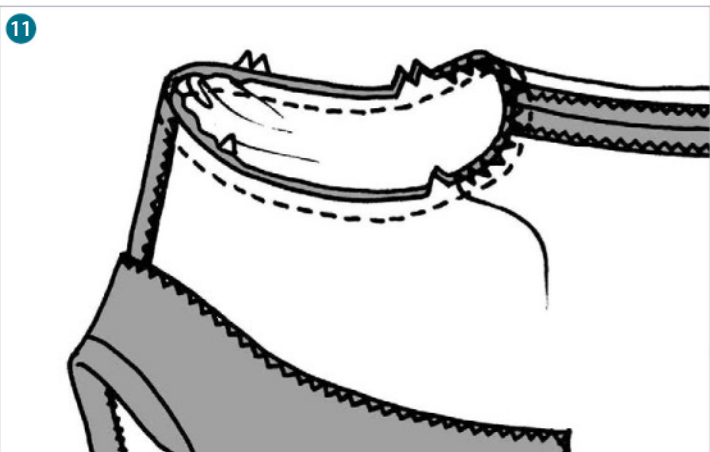
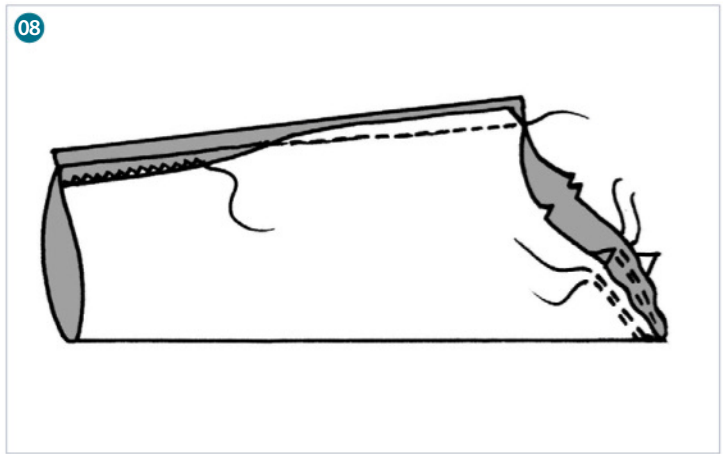
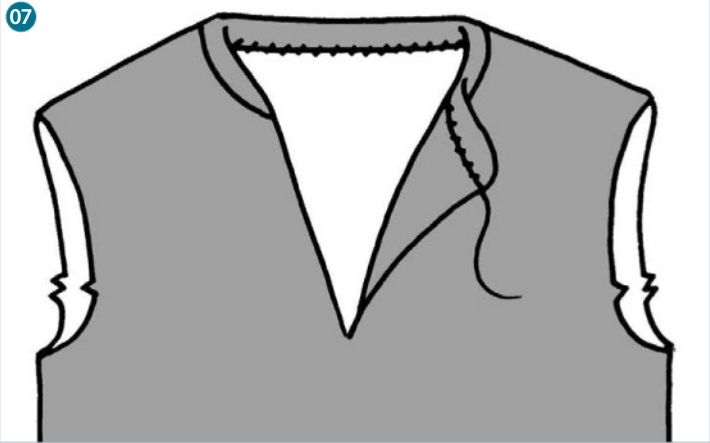
Step one Press the raw hem edge up 5mm, then again 1cm and stitch to hem. ¹²

Simply
Sewing
FRESH IDEAS WITH FABRIC

WWW.GATHERED.HOW/SIMPLYSEWING

© Printed in the UK for *Simply Sewing*. Pattern by Becky Perry (Pattern Paper Scissors) for Prima UK, 2022. Supplied by Our Media Ltd (an Immediate Group Company), Bristol, BS1 4ST. For individual, private home use only. Not for commercial/manufacturing purposes or resale.

SHACK TOP



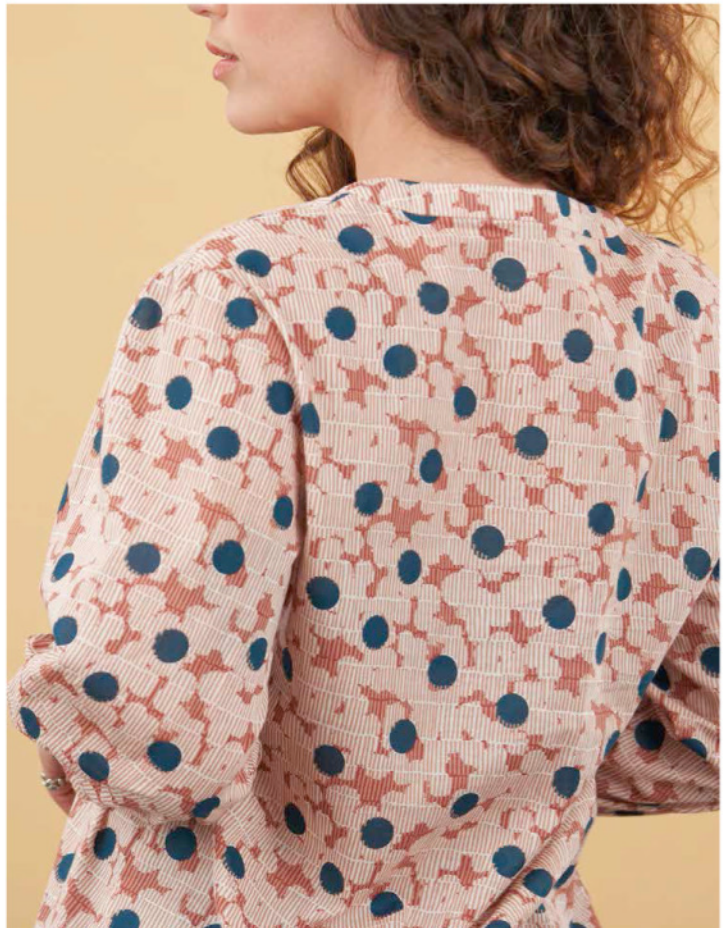
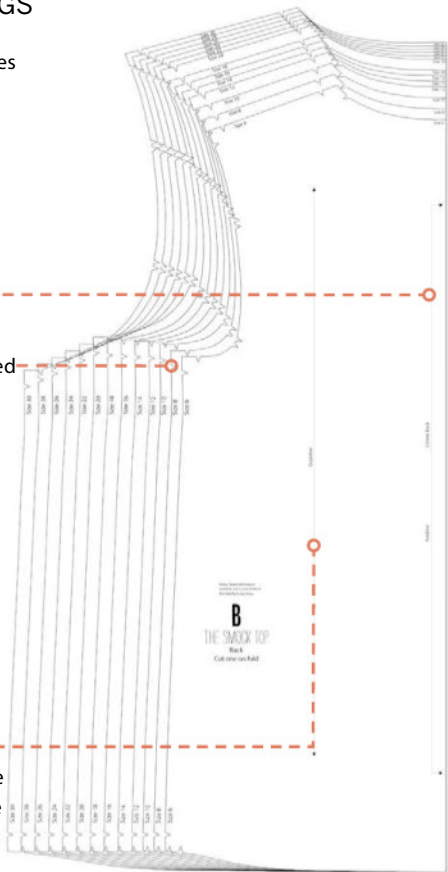
https://vk.com/sew_room

PATTERN MARKINGS

Foldline: This line indicates where the pattern should be positioned on the fold of the fabric.

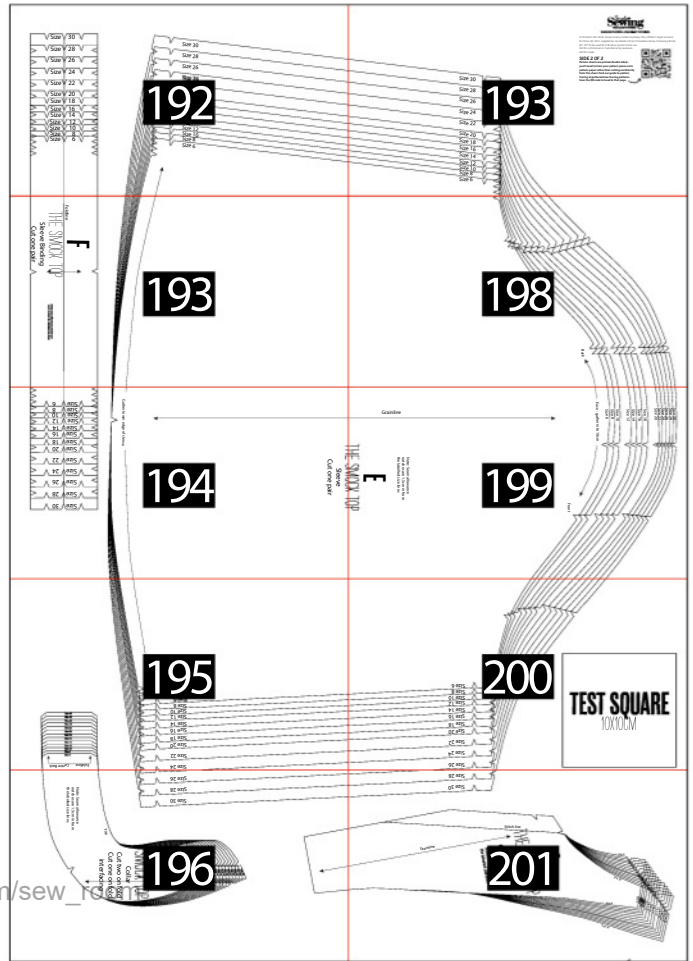
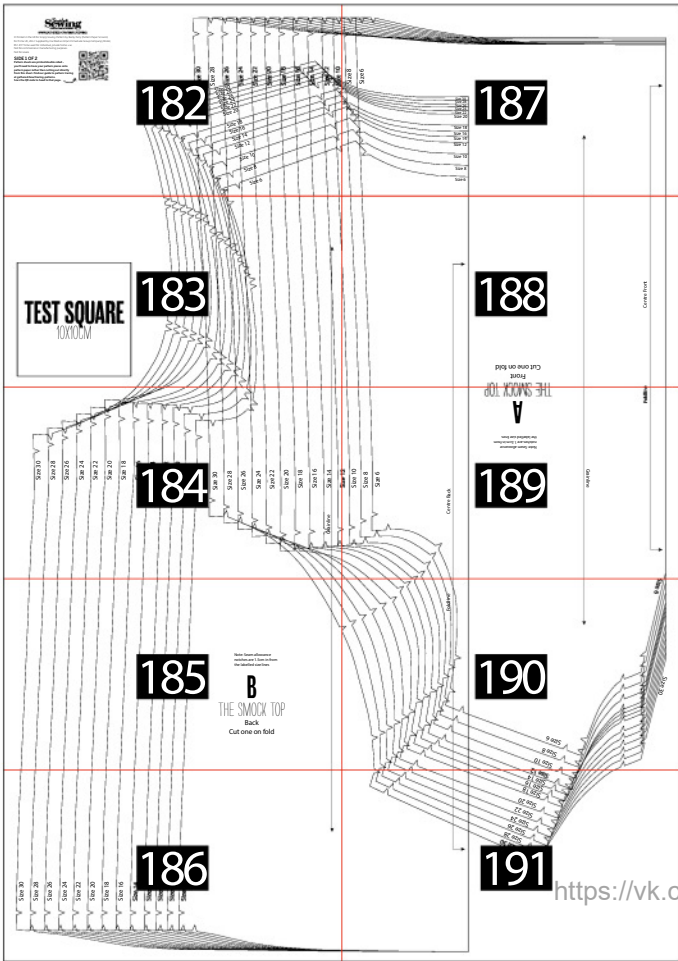
Notches: These are marked on the edges and are mostly used for matching up pattern pieces.

Grainline arrows: These are to let you know where to place the pattern piece along the grainline of the fabric.



HOW TO PRINT THIS PATTERN

Print out the following pages on A4 paper at 100%.
Overlap the red lines and tape the sheets in place using the guide below.

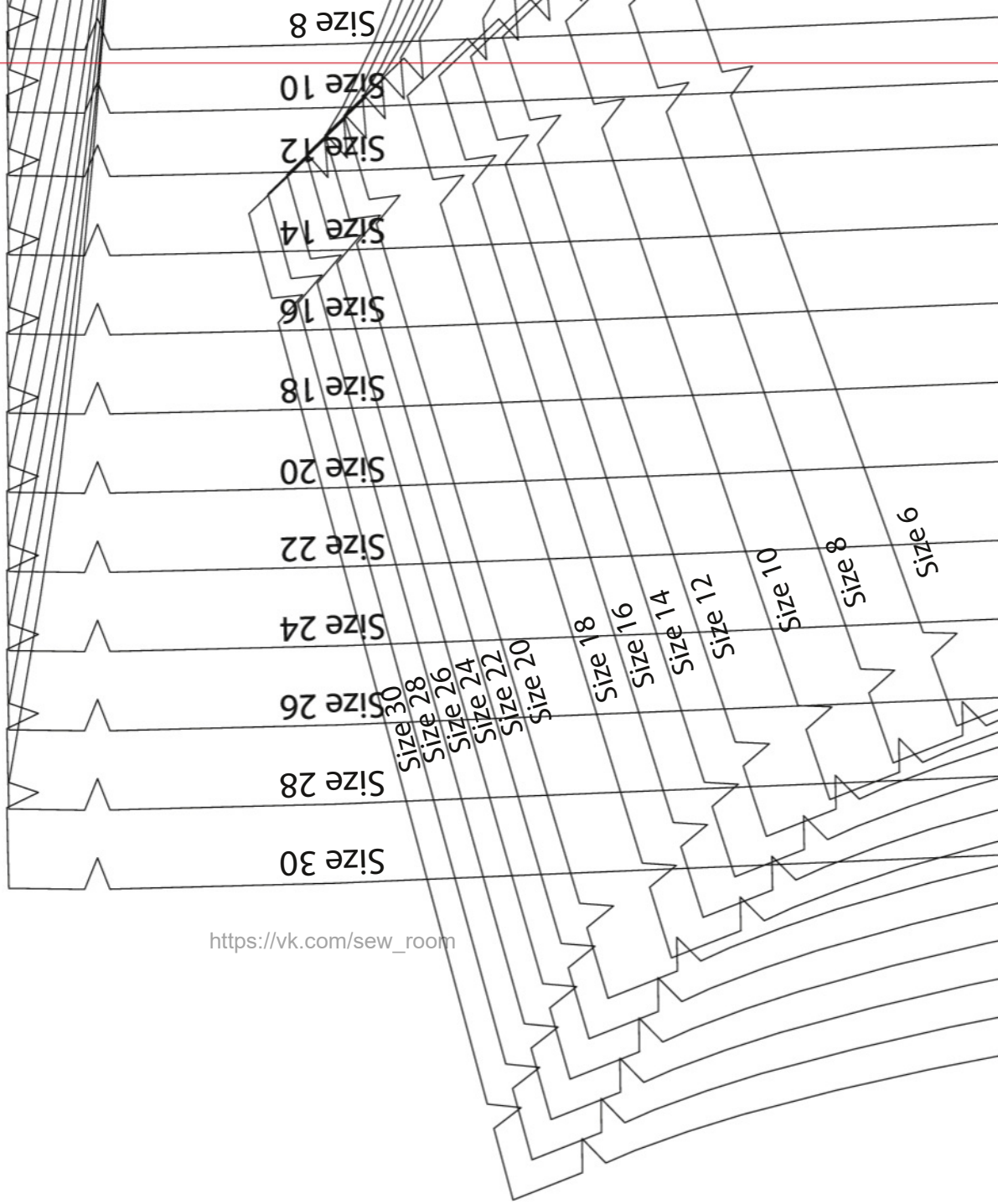




SIDE 1 OF 2

Pattern sheets are printed double sided – you'll need to trace your pattern pieces onto pattern paper rather than cutting out directly from this sheet. Find our guide to pattern tracing at gathered.how/tracing-patterns. Scan the QR code to head to that page.

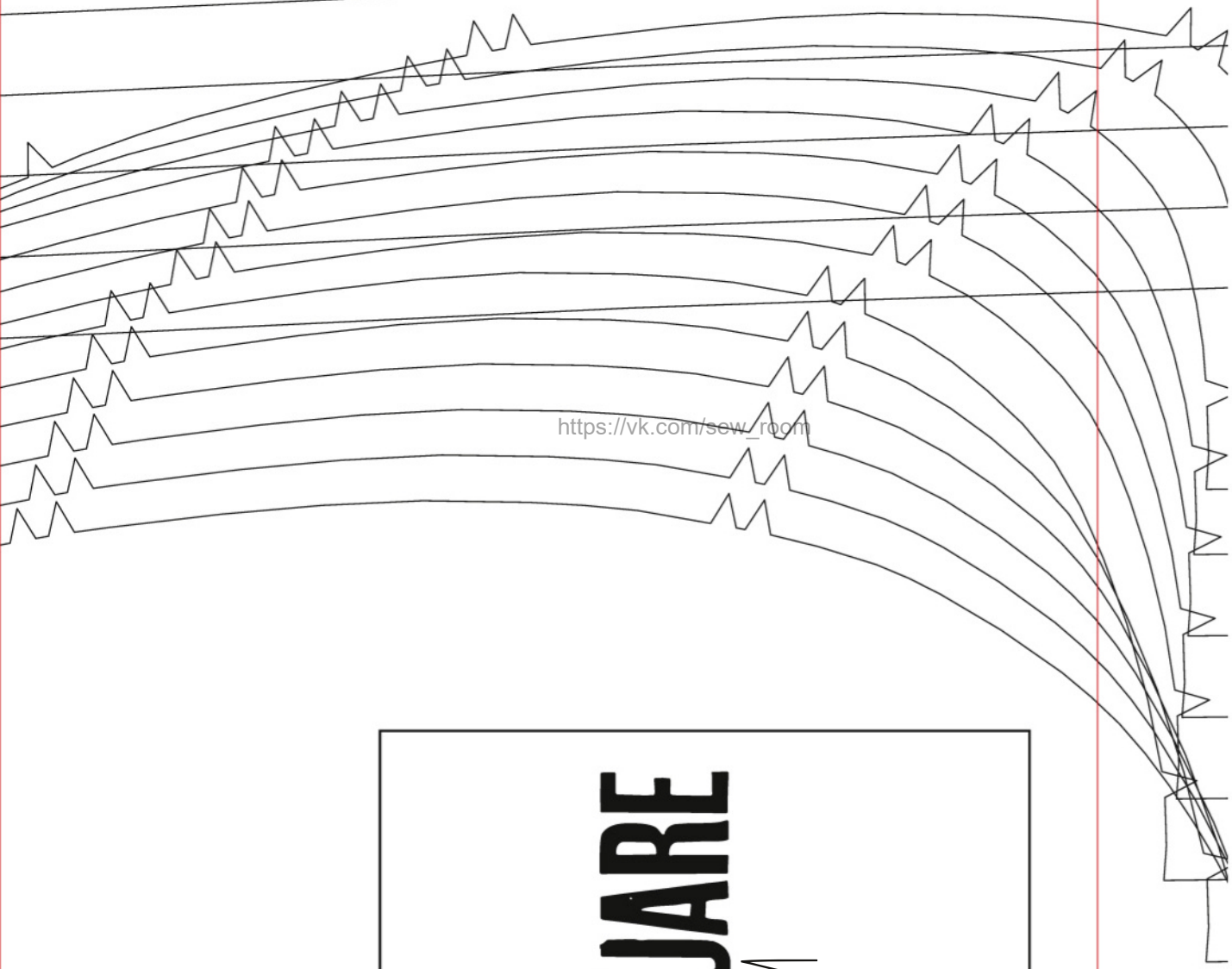
https://vk.com/sew_room

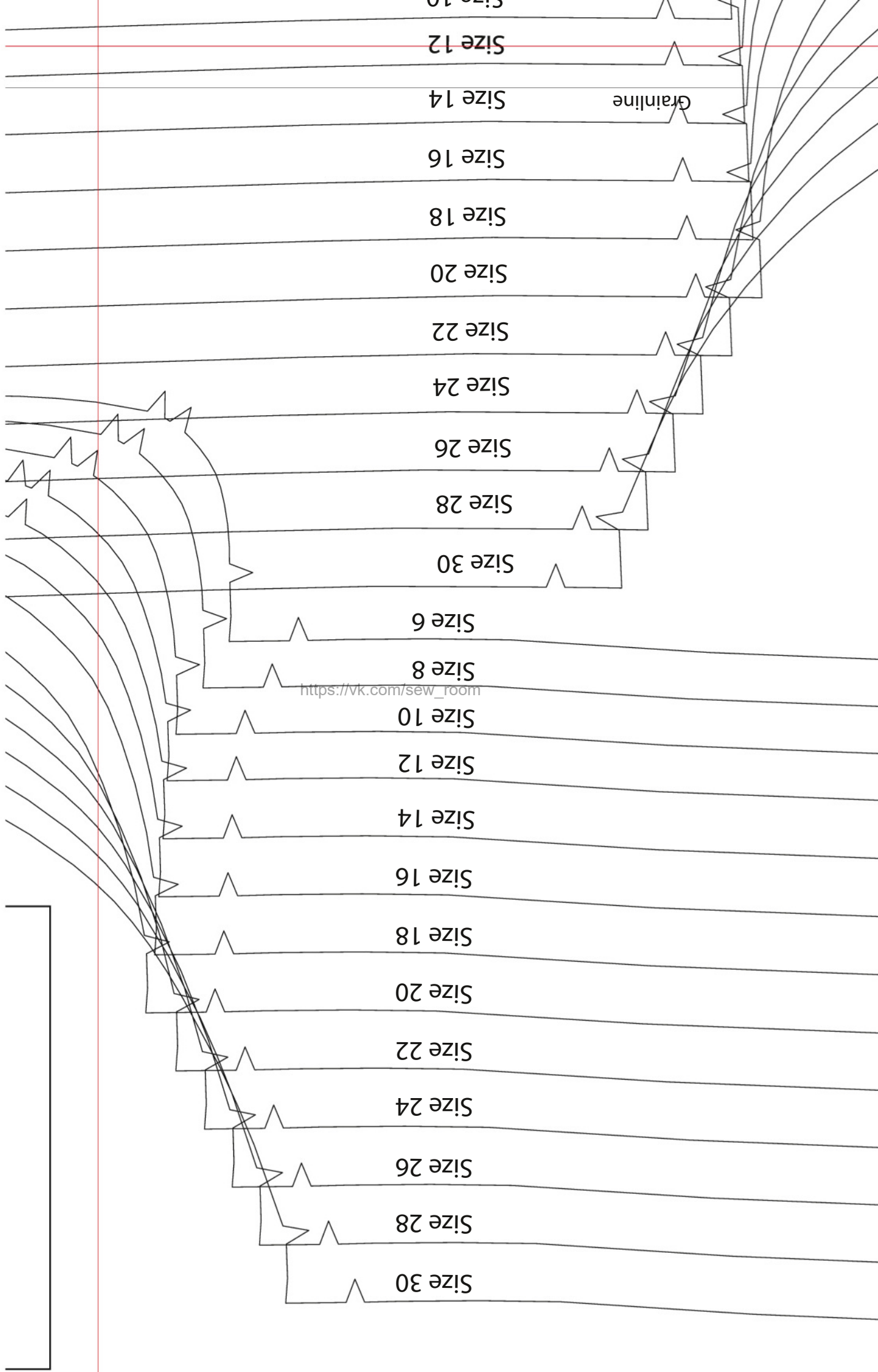


TEST SQUARE

10X10CM

https://vk.com/sew_room





Note: Seam allowance
notches are 1.5cm in from
the labelled size lines

B

THE SMOCK TOP

Back

Cut one on fold

https://vk.com/sew_room

https://vk.com/sew_room

Size 6

Size 8

Size 10

Size 12

Size 14

Size 16

Size 18

Size 20

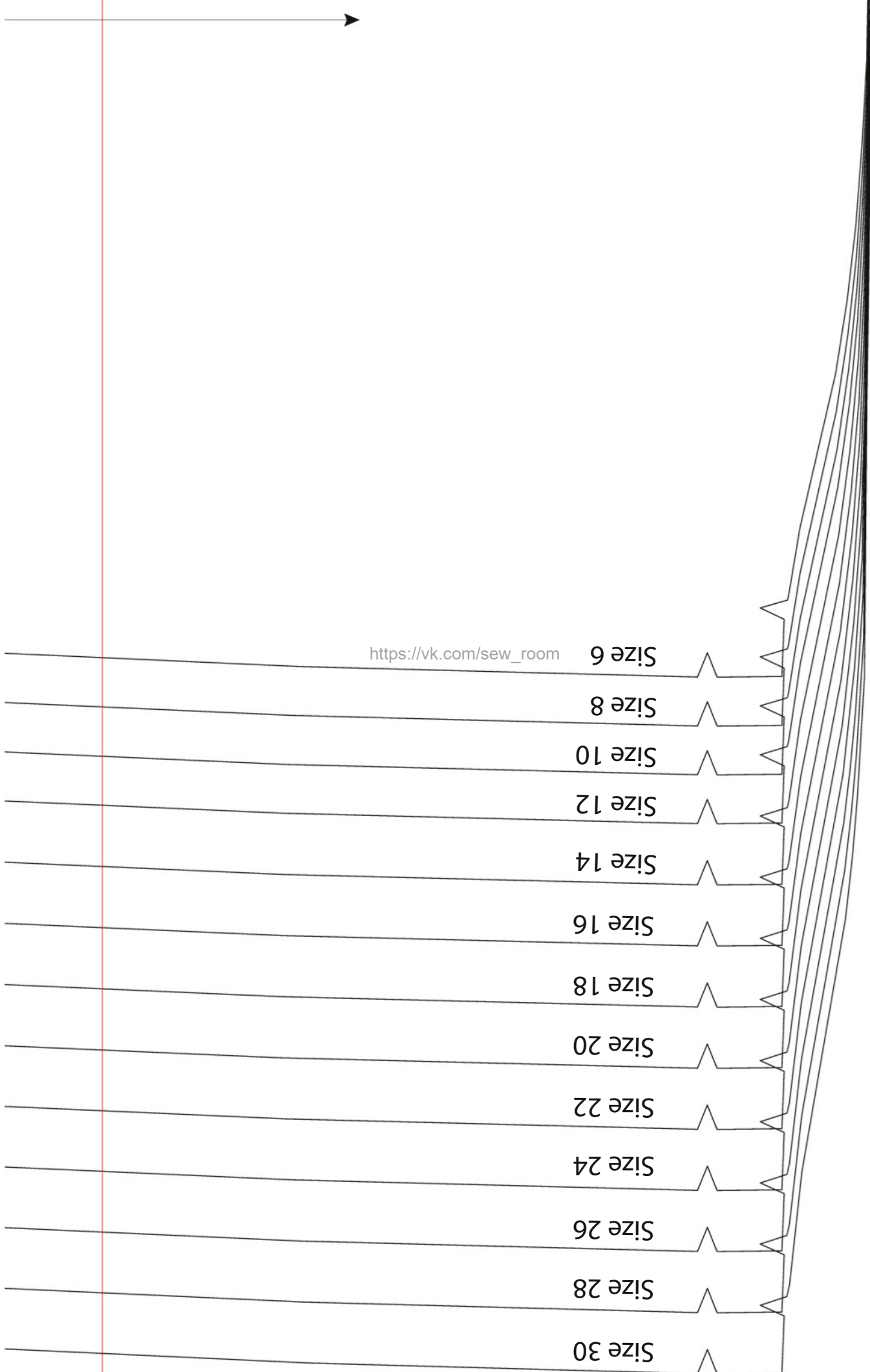
Size 22

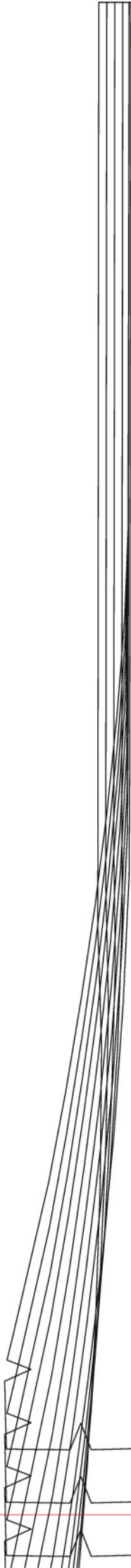
Size 24

Size 26

Size 28

Size 30





Size 6

Size 8

Size 10

Size 30

Size 28

Size 26

Size 24

Size 22

Size 20

Size 18

Size 16

Size 14

Size 12

Size 10

Size 8

Size 6

https://vk.com/sew_room



THE SEW ROOM 101

Front

Cut one on fold

Centre Front

https://vk.com/sew_room

Size 6



Size 6



Foldline

Grainline

Note: Seam allowance notches are 1.5cm in from the labelled size lines

https://vk.com/sew_room

Centre Back

Foldline

Size 6

Size 8

Size 10

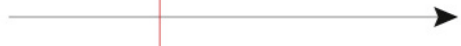
Size 12

THE SMOLLY TOP

A

Size 6

Size 30



Size 6

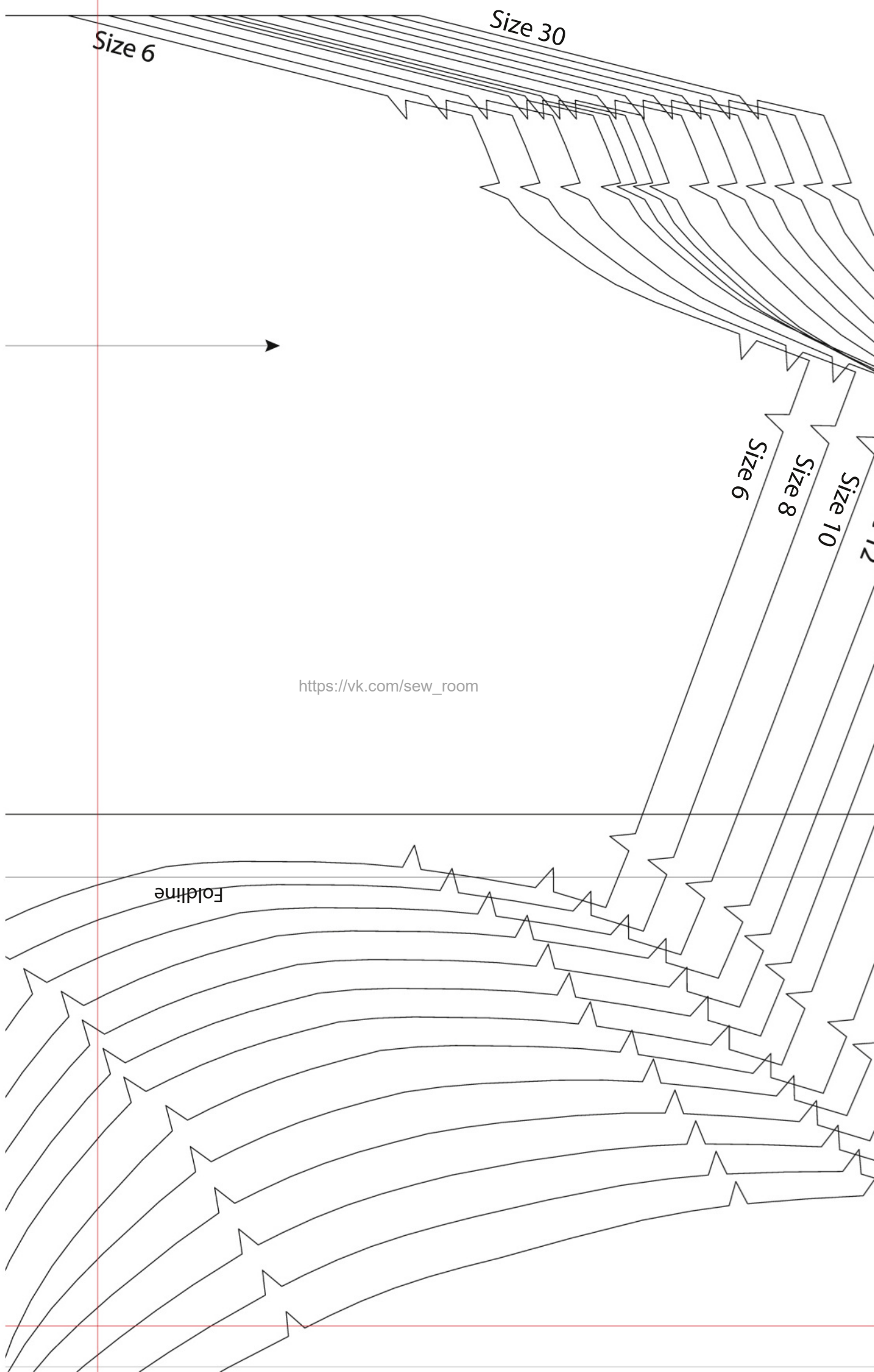
Size 8

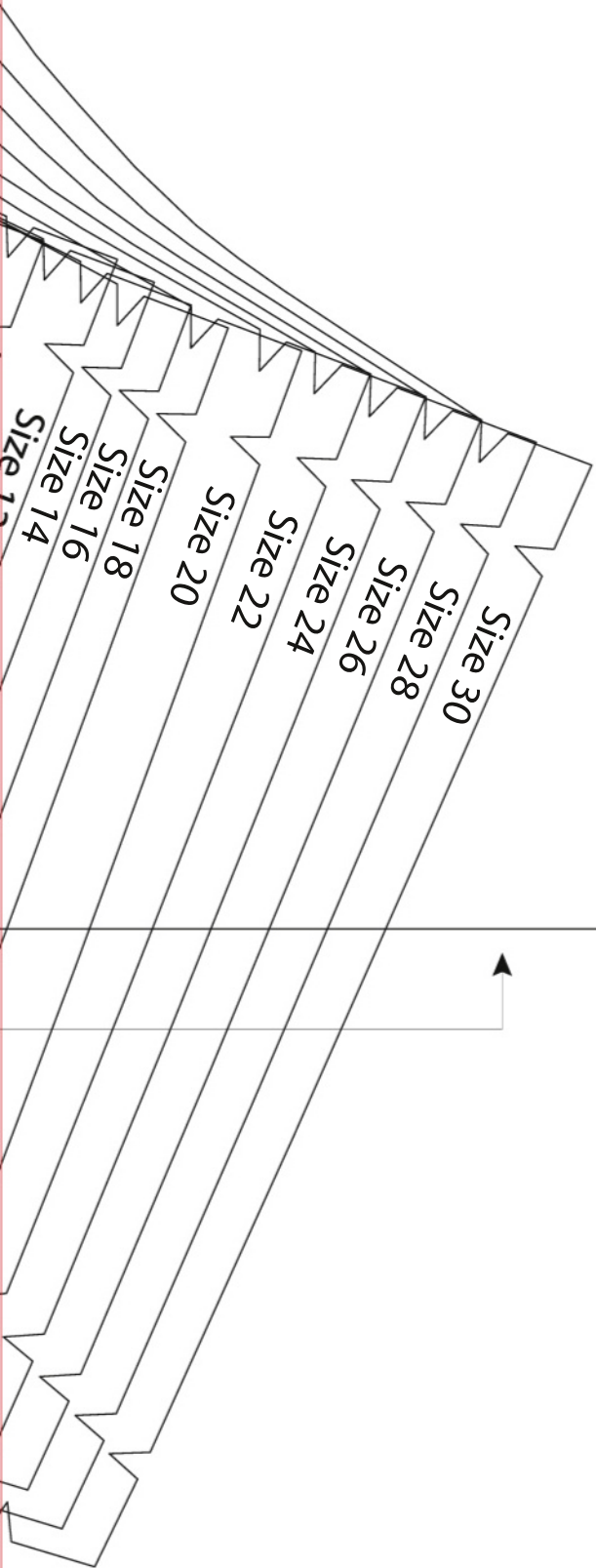
Size 10

Size 12

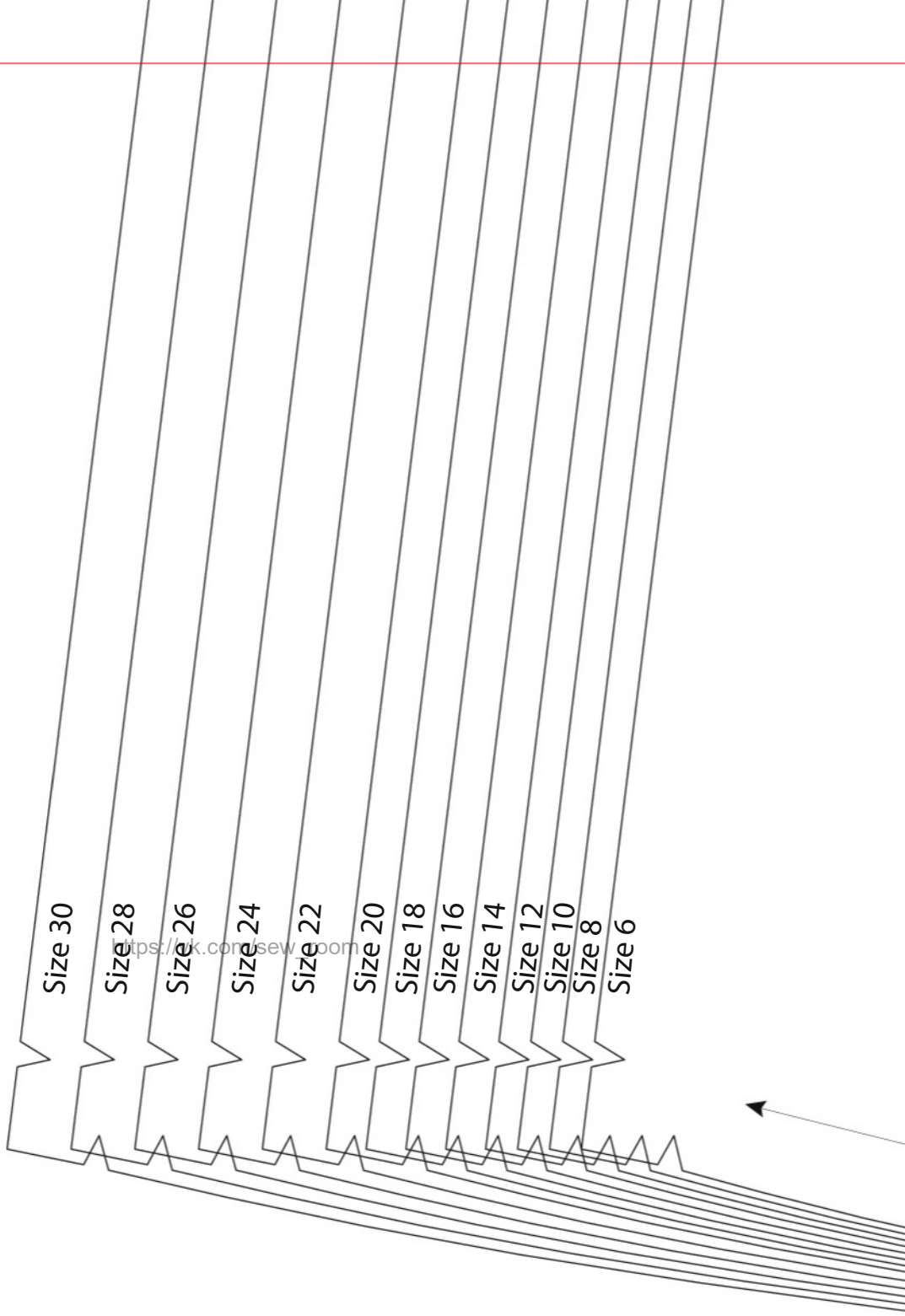
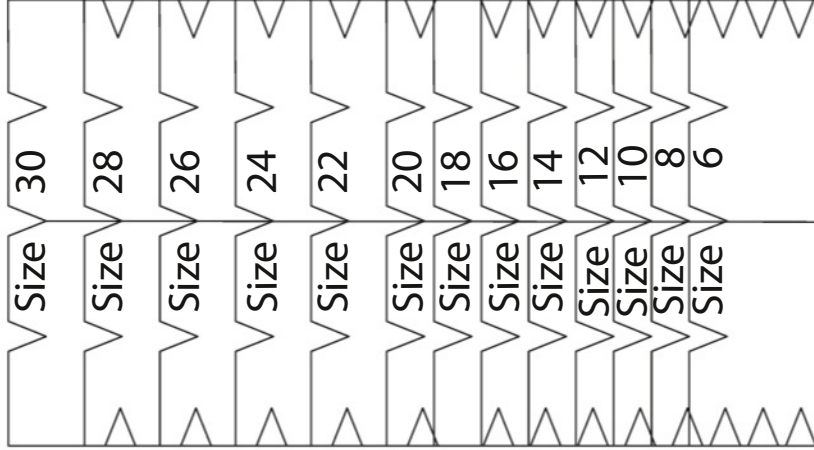
https://vk.com/sew_room

Foldline



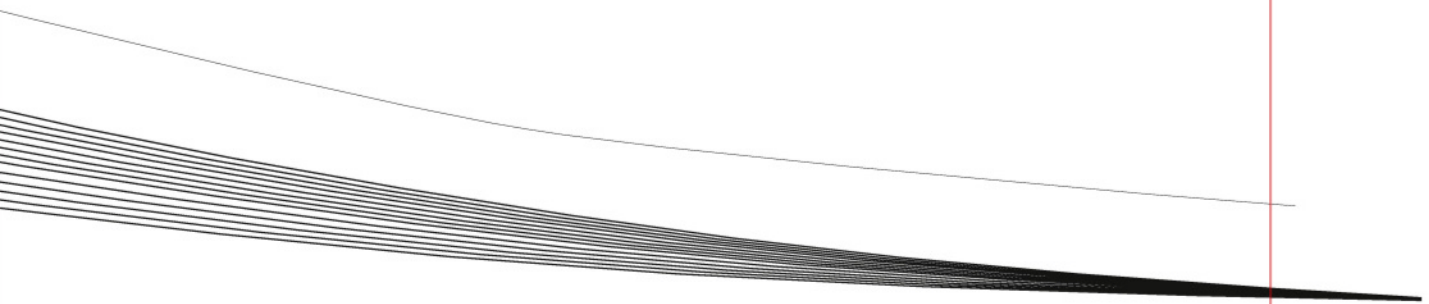


https://vk.com/sew_room



<https://sk.com/sewroom>

https://vk.com/sew_room



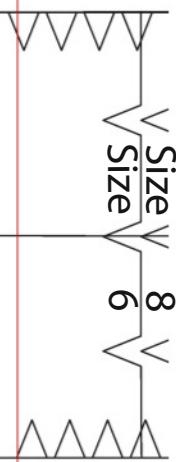
F
Foldline

THE SMOCK TOP

Sleeve Binding
Cut one pair

Note: Seam allowance notches are 1.5cm in from the labelled size lines

Size 6
Size 8



THE SMOCK TOP

Sleeve
Cut one pair

https://vk.com/sew_room

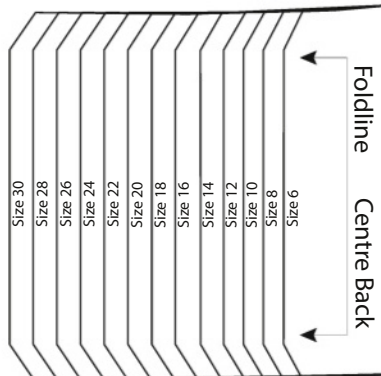
Gather lower edge of sleeve

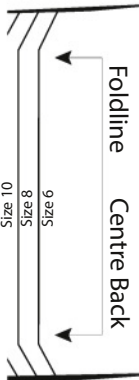
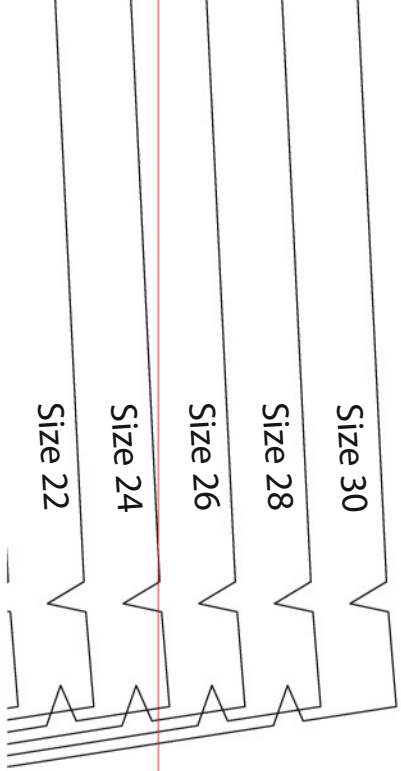
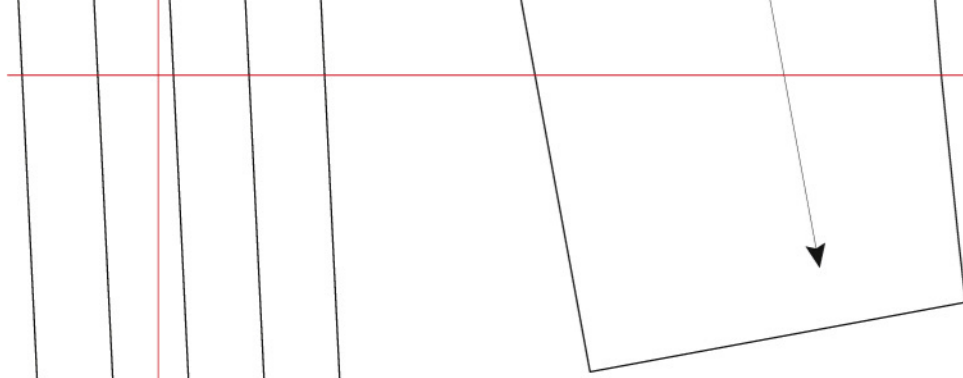


| | |
|------|----|
| Size | 30 |
| Size | 28 |
| Size | 26 |
| Size | 24 |
| Size | 22 |
| Size | 20 |
| Size | 18 |
| Size | 16 |
| Size | 14 |
| Size | 12 |
| Size | 10 |
| Size | 8 |
| Size | 6 |

https://vk.com/sew_room

- Size 28
- Size 26
- Size 24
- Size 22
- Size 20
- Size 18
- Size 16
- Size 14
- Size 12
- Size 10
- Size 8
- Size 6

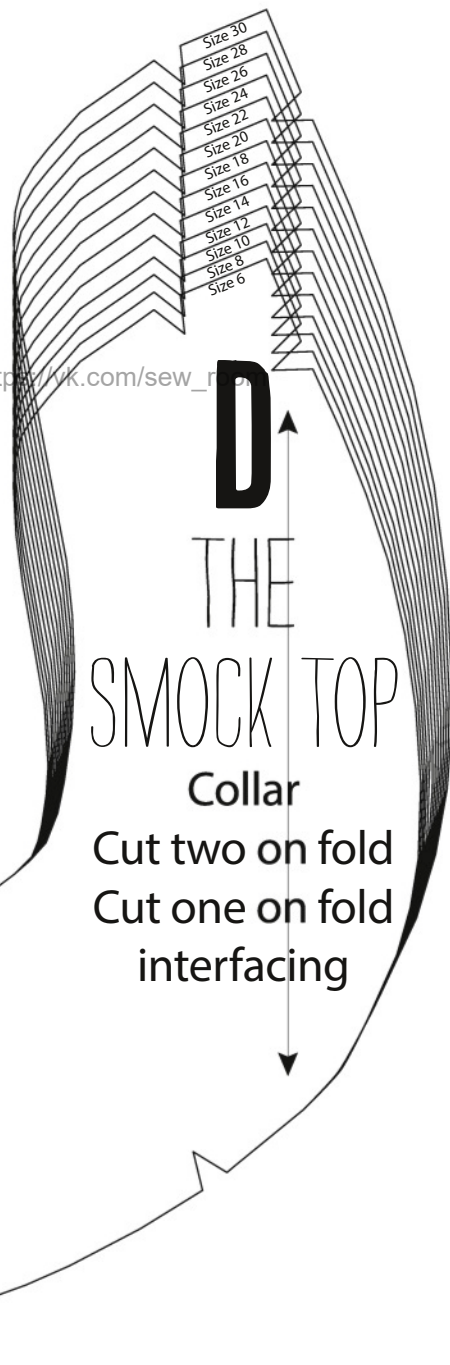




Note: Seam allowance notches are 1.5cm in from the labelled size lines

http://www.hk.com/sew_r

D
THE
SMOCK TOP
Collar
Cut two on fold
Cut one on fold
interfacing





SIDE 2 OF 2

Pattern sheets are printed double sided – you'll need to trace your pattern pieces onto pattern paper rather than cutting out directly from this sheet. Find our guide to pattern tracing at gathered.how/tracing-patterns. Scan the QR code to head to that page.

Size 30

Size 28

Size 26

Size 24

Size 22

Size 20

Size 18

Size 16

Size 14

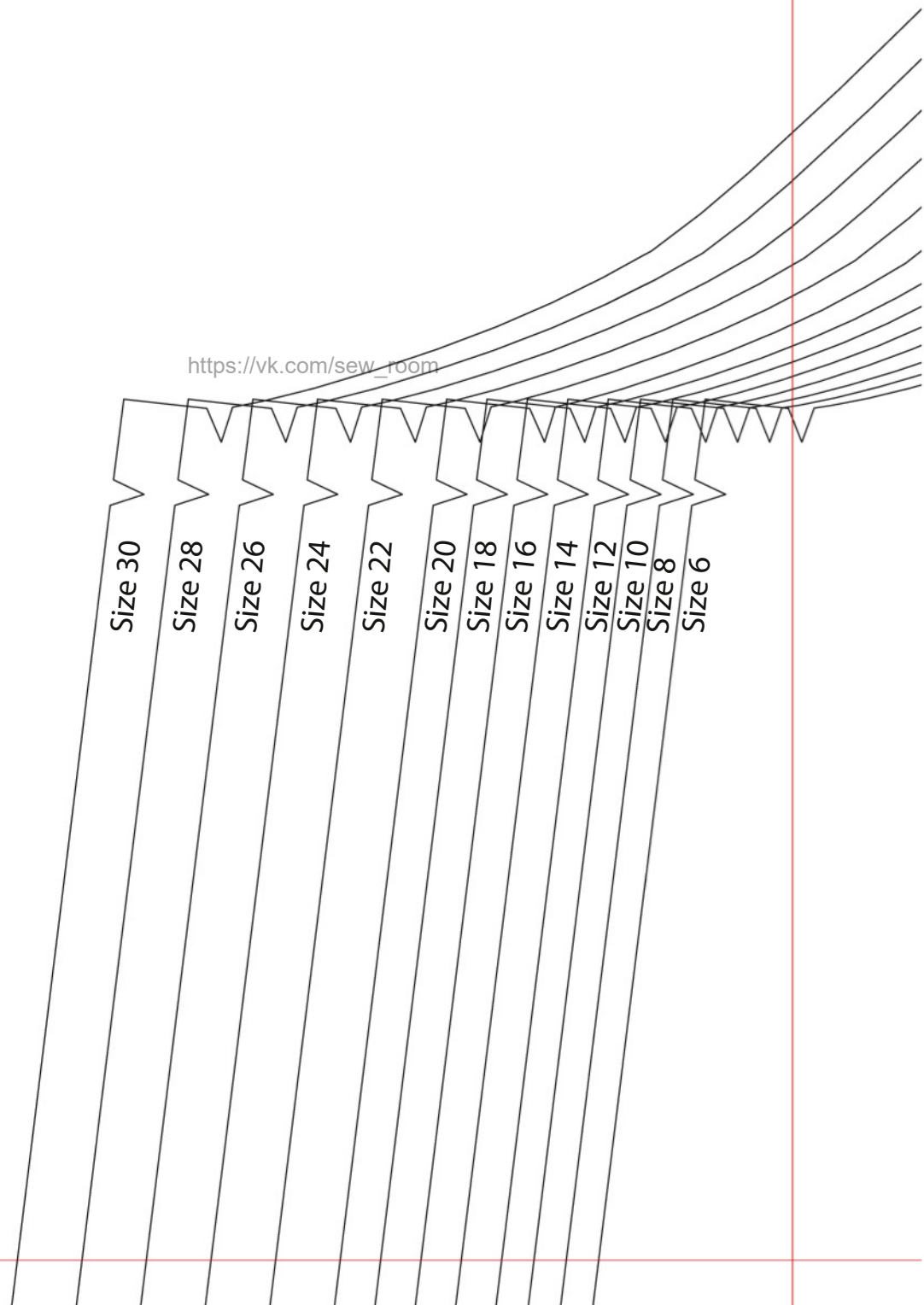
Size 12

Size 10

Size 8

Size 6

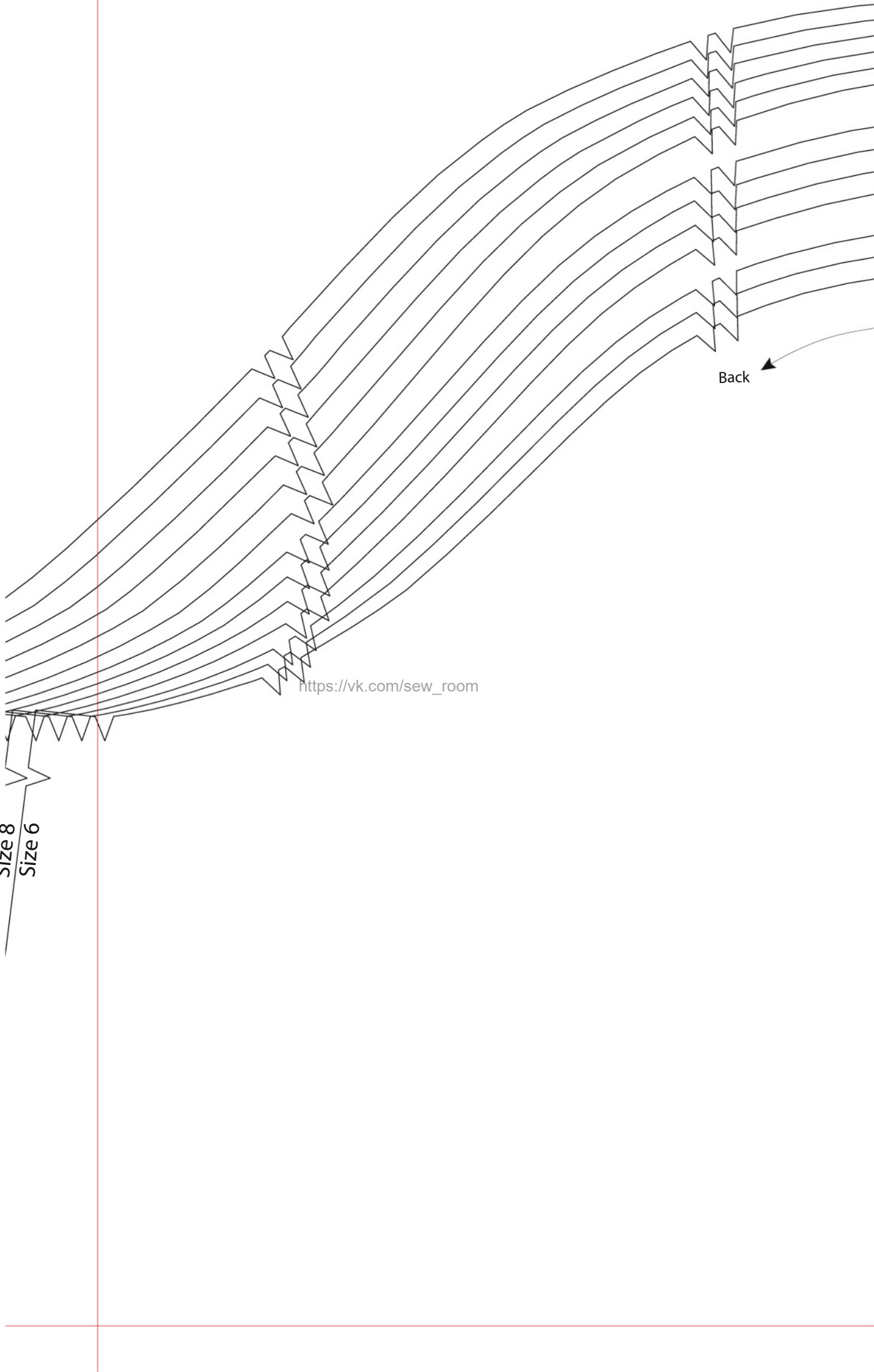
https://vk.com/sew_room

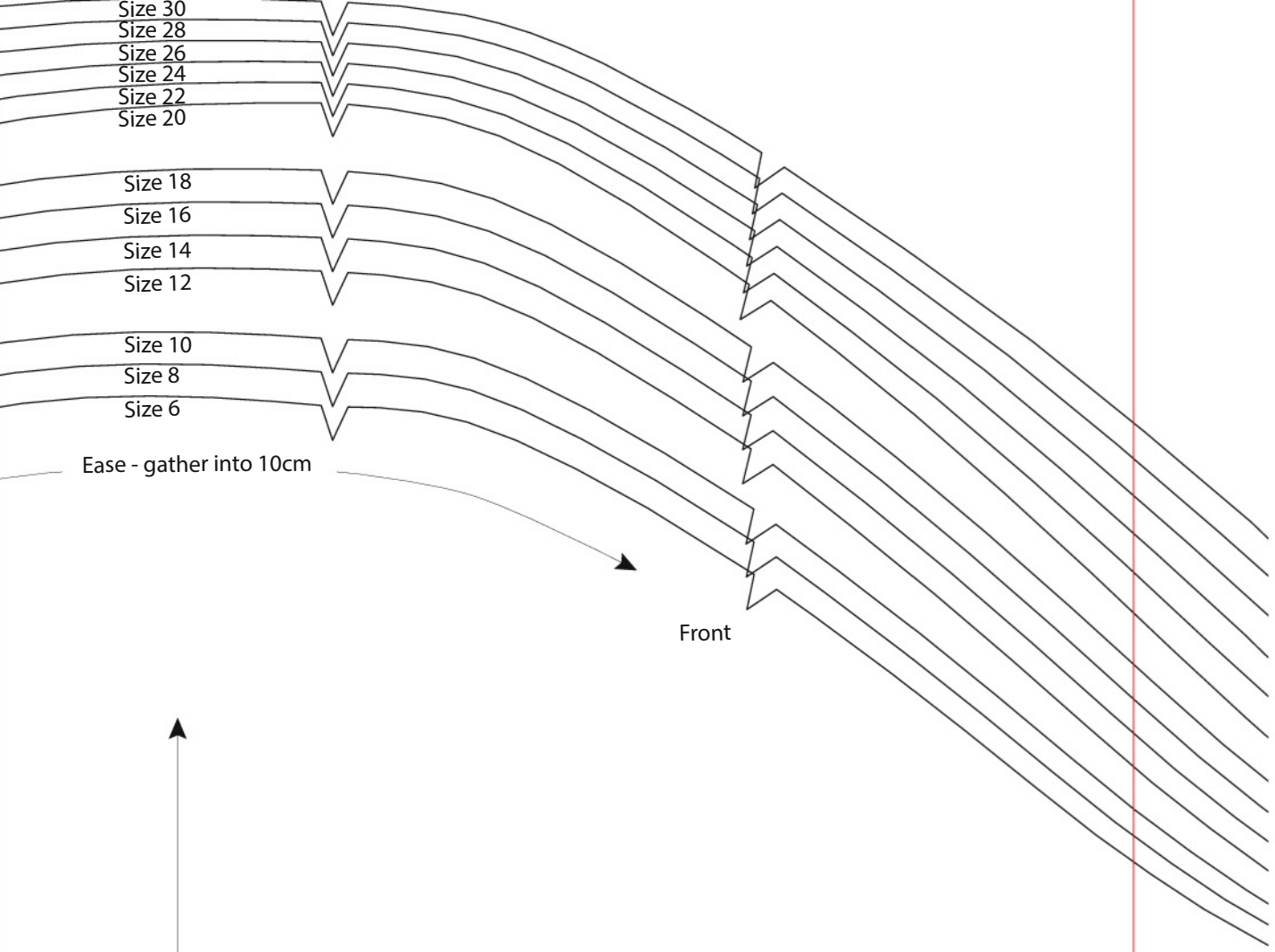


Size 8
Size 6

https://vk.com/sew_room

Back





Ease - gather into 10cm

Front

Grainline

https://vk.com/sew_room

Note: Seam allowance notches are 1.5cm in from the labelled size lines

E

THE SMOCK TOP

Sleeve

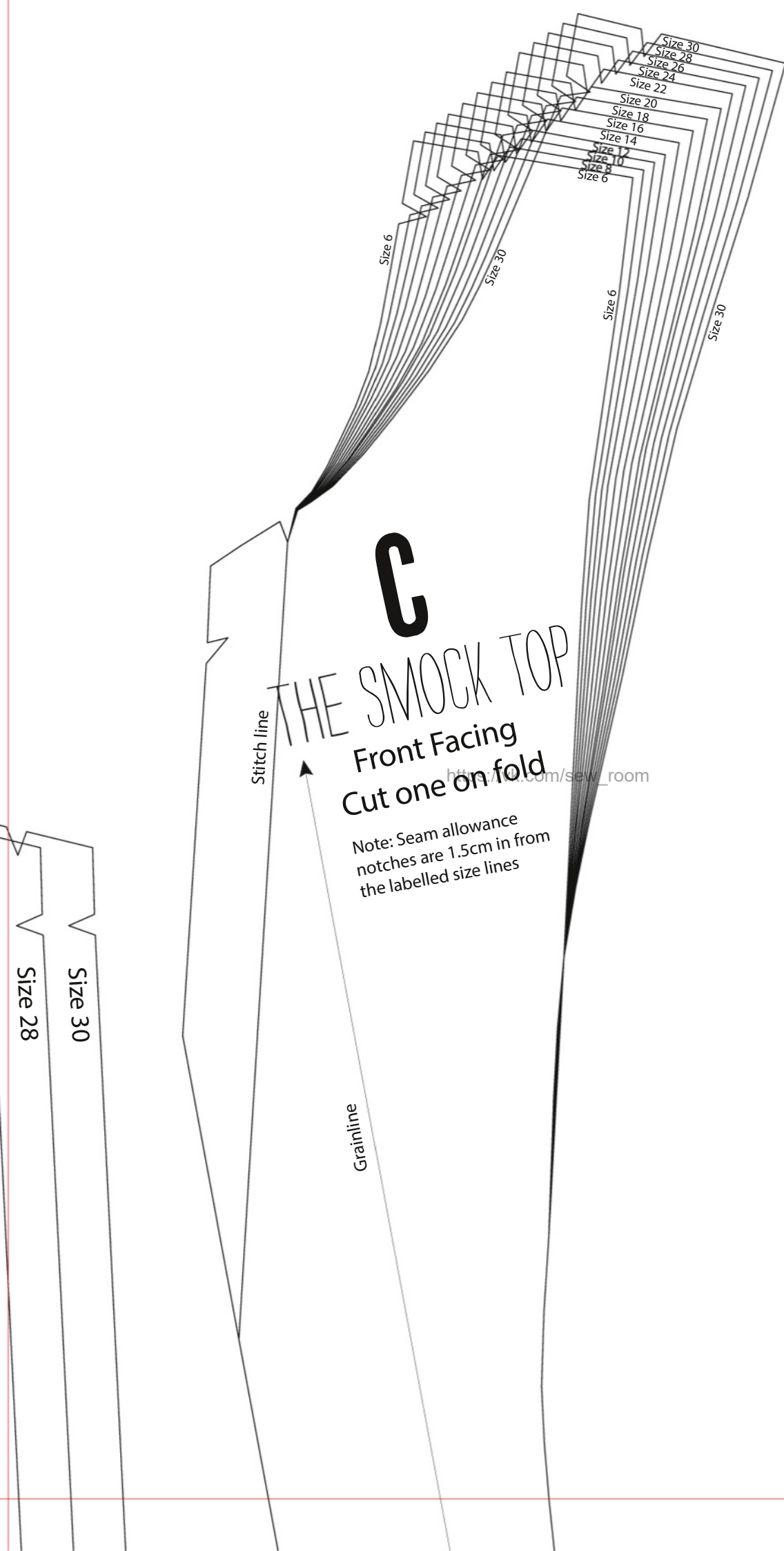
TEST SQUARE

M1001X01



https://vk.com/sew_room

- Size 26
- Size 24
- Size 22
- Size 20
- Size 18
- Size 16
- Size 14
- Size 12
- Size 10
- Size 8
- Size 6



Size 30
Size 28
Size 26
Size 24
Size 22
Size 20
Size 18
Size 16
Size 14
Size 12
Size 10
Size 8
Size 6

Size 6

Size 30

Size 6

Size 30

C

THE SMOCK TOP

Front Facing
Cut one on fold

Stitch line

Grainline

Note: Seam allowance notches are 1.5cm in from the labelled size lines

http://www.sew_room.com/sew_room

Size 28

Size 30