

New Look 6266 Size:8-18 Part:1 Paper:a4

Generated by printsew.com

Patent No: 7,716,143

Any reproduction and/or redistribution is strictly prohibited.

**PRINT THIS PAGE FIRST!** To make sure your printer setup correctly.  
The below square should measure 1 inch x 1 inch (2.54 cm x 2.54 cm) after printing.  
Allow square to have 1/16 inch (2 mm) deviation for printer calibration differences.

select

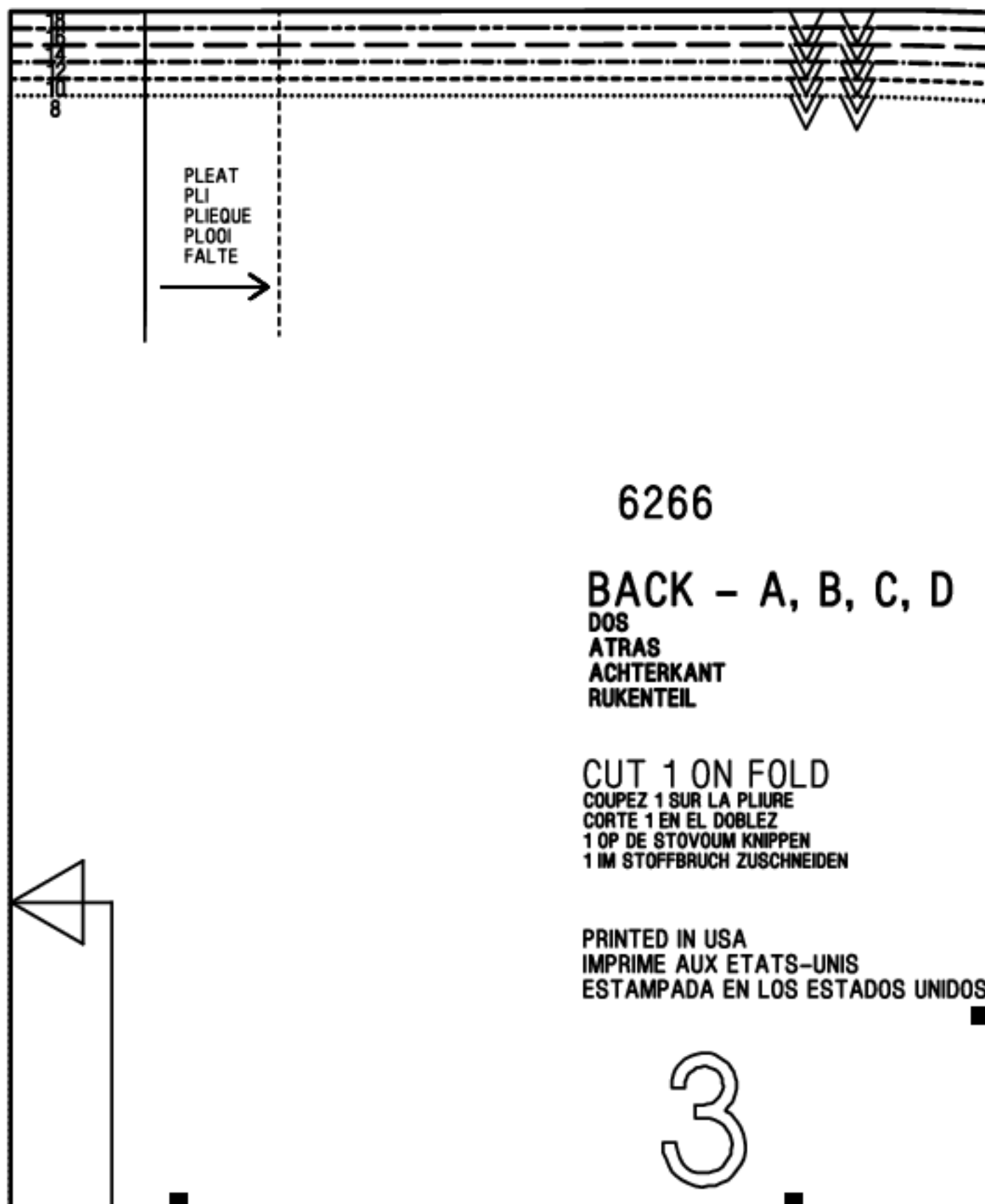
Make sure your printer is set to the same paper size that you

To save ink, set your printer to Draft or Fast Draft.



Row A, Column 1

New Look 6266 Size:8-18 Part:1 www.printsew.com



6266

BACK – A, B, C, D

DOS

ATRAS

ACHTERKANT

RUKENTEIL

CUT 1 ON FOLD

COUPEZ 1 SUR LA PLIURE

CORTE 1 EN EL DOBLEZ

1 OP DE STOVUOM KNIPPEN

1 IM STOFFBRUCH ZUSCHNEIDEN

PRINTED IN USA

IMPRIME AUX ETATS-UNIS

ESTAMPADA EN LOS ESTADOS UNIDOS

3

**WAISTLINE  
TAILLE  
CINTURA  
RIEM LIJN  
TAILLENLINE**

CENTER FOLD  
PLIURE DU MILIEU  
PLIEGUE DEL CENTRO  
MIDDLE STOFFVOUW  
MITTEL STOFFBRUCH

ENGLISH GLOSSARY	GLOSSARIO ITALIANO	WOORDENLIJST NEDERLANDS
APPLIQUE	APPLICAZIONE	APPLIQUE
BUST	PETTO	BUSTE
BUTTONHOLE GUIDE	GUIDA PER ASOLE	SJABLOON VOOR KNOOPSGAT
CASING	GUAINA	TUNNEL
CENTER	CENTRO	MIDDEN
CENTER BACK	CENTRO DIETRO	MIDDEN VOOR
CENTER FRONT	CENTRO DAVANTI	MIDDEN ACNTER
CUT...	TAGLIARE...	...X KNIPPEN
CUT...ON FOLD	TAGLIARE...SULLA PIEGA	... AAN STOFVOUW LEGGEN
CUTTING LINE	LINEA DI TAGLIO	KNIPLIJN
DART	PINCE	FIGUUR NAAD
EASE	DIMINUIRE	TOEGEVEN
ELASTIC GUIDE	GUIDA PER ELASTICO	SJABLOON VOOR ELASTIC
FABRIC	TESSUTO	STOF
FOLD LINE	LINEA DI PIEGATURA	VOUWLIJN
FOR MISS PETITE	PER SIGNORA DI STATURA BASSA	VOOR KLEINE DAMES
GATHER	ARRICIARE	RIMPELEN
HEM ALLOWED	ORLO COMPRESO	ZOOMTOESLAG
HIP	FIANCHI	HEUP
INTERFACING	TELETTA	TUSSENVOERING
LINING	FODERA	VOERING
PLEAT	PIEGA	PLOOI
SEAM	CUCITURA	NAAD
SELVAGE	CIMOSA	ZELFRAND
STITCHING LINE	LINEA DI CUCITURA	NAAIENLIJN

Row C, Column 1

New Look 6266 Size:8-18 Part:1 www.printsew.com

STRETCH  
WAIST  
WAIST LINE

TENDERE  
VITA  
VITA

STRIJLEN  
REIMLIJN  
REIMLIJN

CUTTING LINE FOR VIEW - B, C  
LIGNE DE COUPE POUR VUE  
LINEA DE CORTE PARA VISTA  
KNIPLIJN VOOR ZICHT  
SCHNITTLINIE FÜR ANSICHT

5/8 IN. HEM ALLOWED  
DURLET DE 1.5 CM.  
DOBLADILLO DE 1.5 CM.  
ZOOMTOESLAG  
MIT SAUMZUGABE

CUTTING LINE FOR VIEW - A, D  
LIGNE DE COUPE POUR VUE  
LINEA DE CORTE PARA VISTA  
KNIPLIJN VOOR ZICHT  
SCHNITTLINIE FÜR ANSICHT

5/8 IN. HEM ALLOWED  
DURLET DE 1.5 CM.  
DOBLADILLO DE 1.5 CM.  
ZOOMTOESLAG  
MIT SAUMZUGABE

www.simplicity.com  
E-mail  
info@simplicity.com



Row D, Column 1

New Look 6266 Size:8-18 Part:1 [www.printsew.com](http://www.printsew.com)

18

14

10

18

14

10

5/8 IN. HEM ALLOWED  
DOBLADILLO DE 1.5 CM.  
ZOOMTOESLAG  
MIT SAUMZUGABE



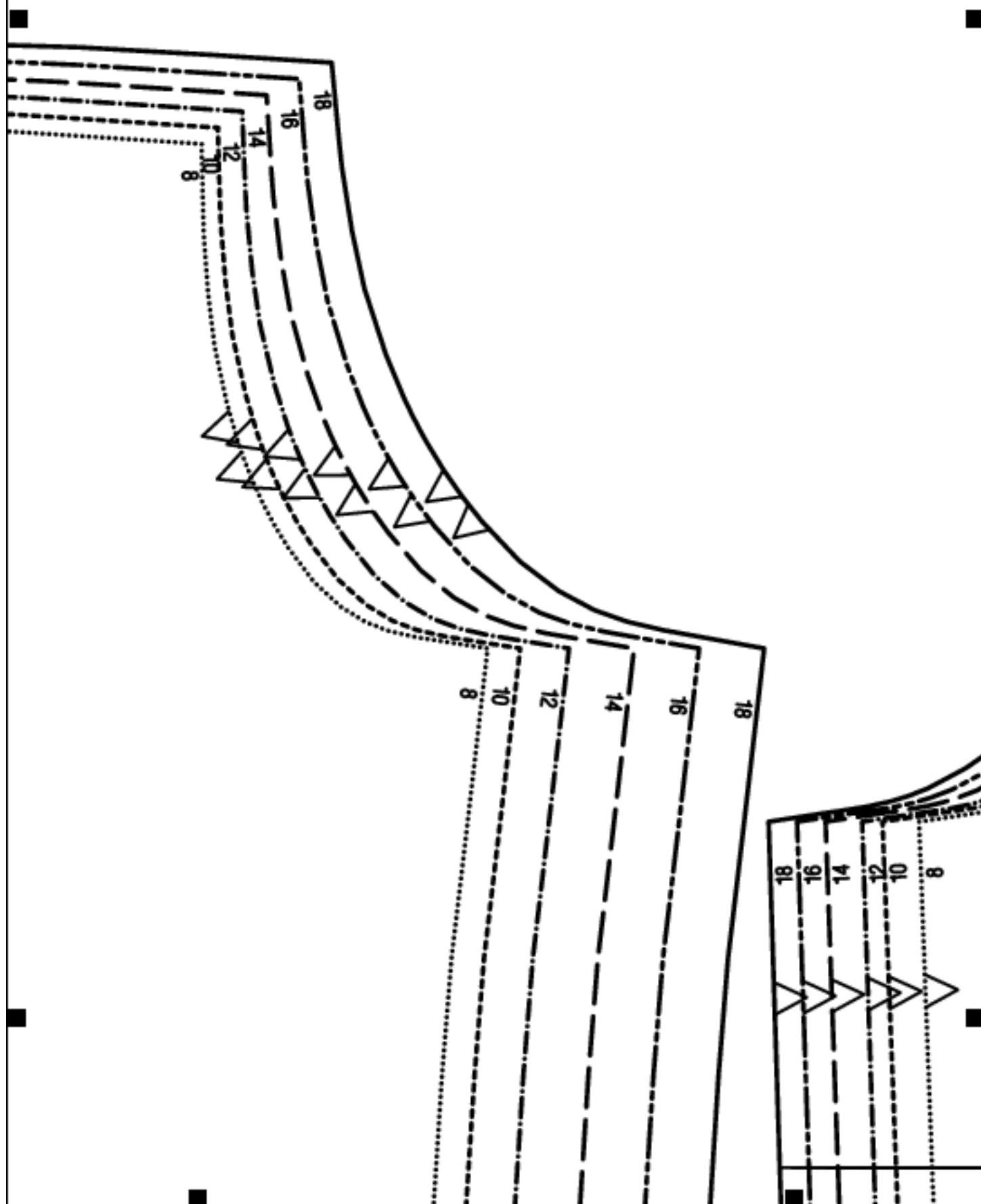
Row E, Column 1

New Look 6266 Size:8-18 Part:1 [www.printsew.com](http://www.printsew.com)



## Row A, Column 2

New Look 6266 Size:8-18 Part:1 [www.printsew.com](http://www.printsew.com)





## Row B, Column 2

New Look 6266 Size:8-18 Part:1 [www.printsew.com](http://www.printsew.com)

### GLOSSAR DEUTSCH

APPLIKATION  
OBERWEITE  
VORLAGE FÜR KNOPFLOCHER  
DURCHZUG  
MITTE  
RÜCKWÄRTIGE MITTE  
VORDERE MITTE  
... X ZUSCHNEIDEN  
... AM STOFFBRUCH ZUSCHNEIDEN  
SCHNITTLINIE  
ABNAHER  
EINHALTEN  
VORLAGE FÜR GUMMIZUG  
STOFF  
UMBRUCHLINIE  
FÜR KLEINE DAMEN  
EINREIHEN  
MIT SAUMZUGABE  
HUFTE  
EINLAGE  
FUTTER  
FALTE  
NAHT  
WEBKANTE  
NAHENLINIE

8 10

12

14

16

18



New Look 6266 Size:8-18 Part:1 [www.printsew.com](http://www.printsew.com)

18  
16  
14  
12  
10

12 14 16 18  
10 12 14 16 18  
8 10 12 14 16 18

ED  
CM.

6  
LES/TALLAS  
10, 12  
CUT 2  
COUPEZ 2  
CORTE 2  
KNIPPEN 2  
SCHNEIDEN 2

FRONT - A, B, C, D

DU DEVANT  
FRONT  
VAN PAS  
ASSE

6 LES/TALLAS 10, 12

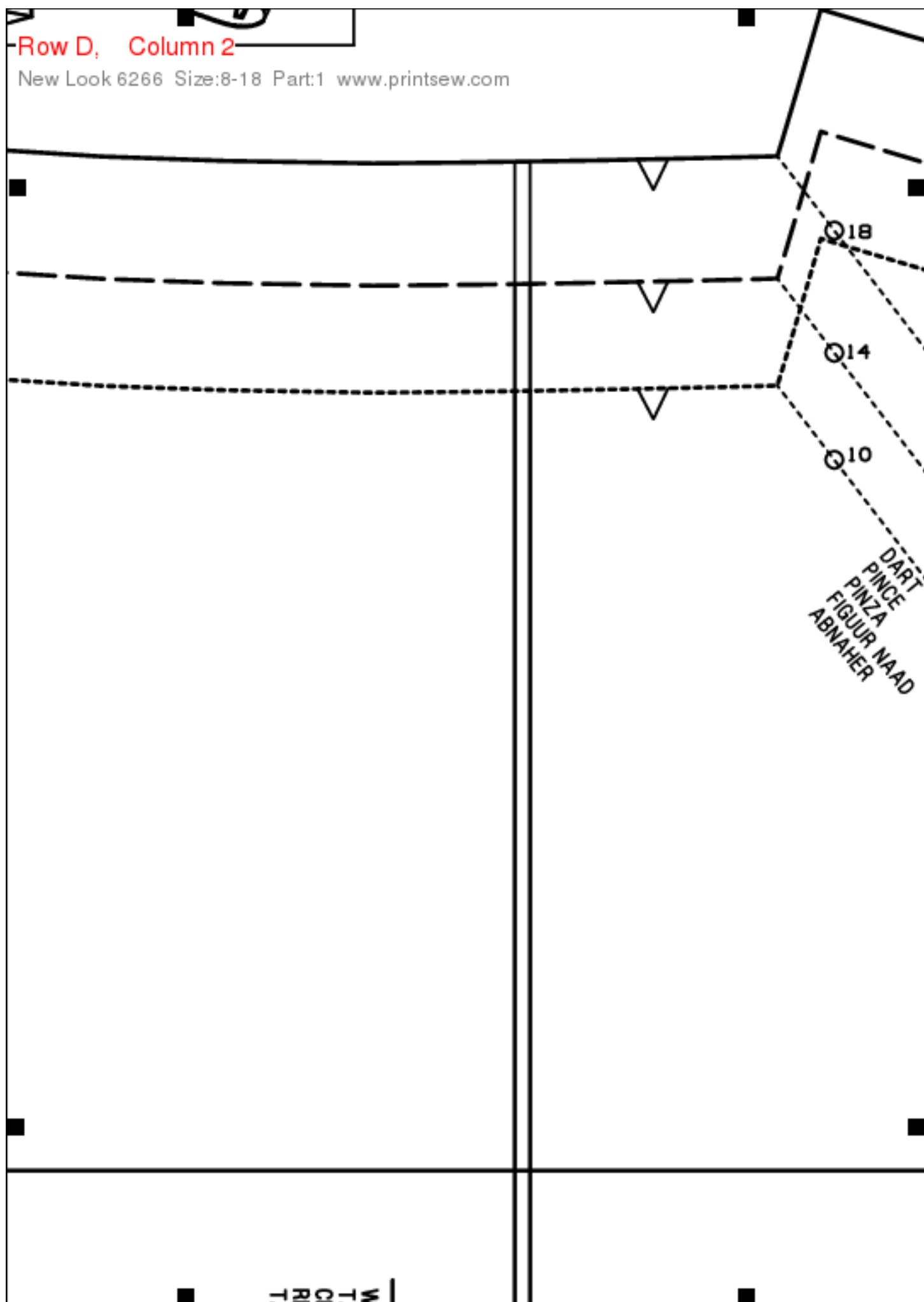
U.S. & Canada Toll-Free  
1-888-588-2700

Web Site  
http://w



Row D, Column 2

New Look 6266 Size:8-18 Part:1 [www.printsew.com](http://www.printsew.com)



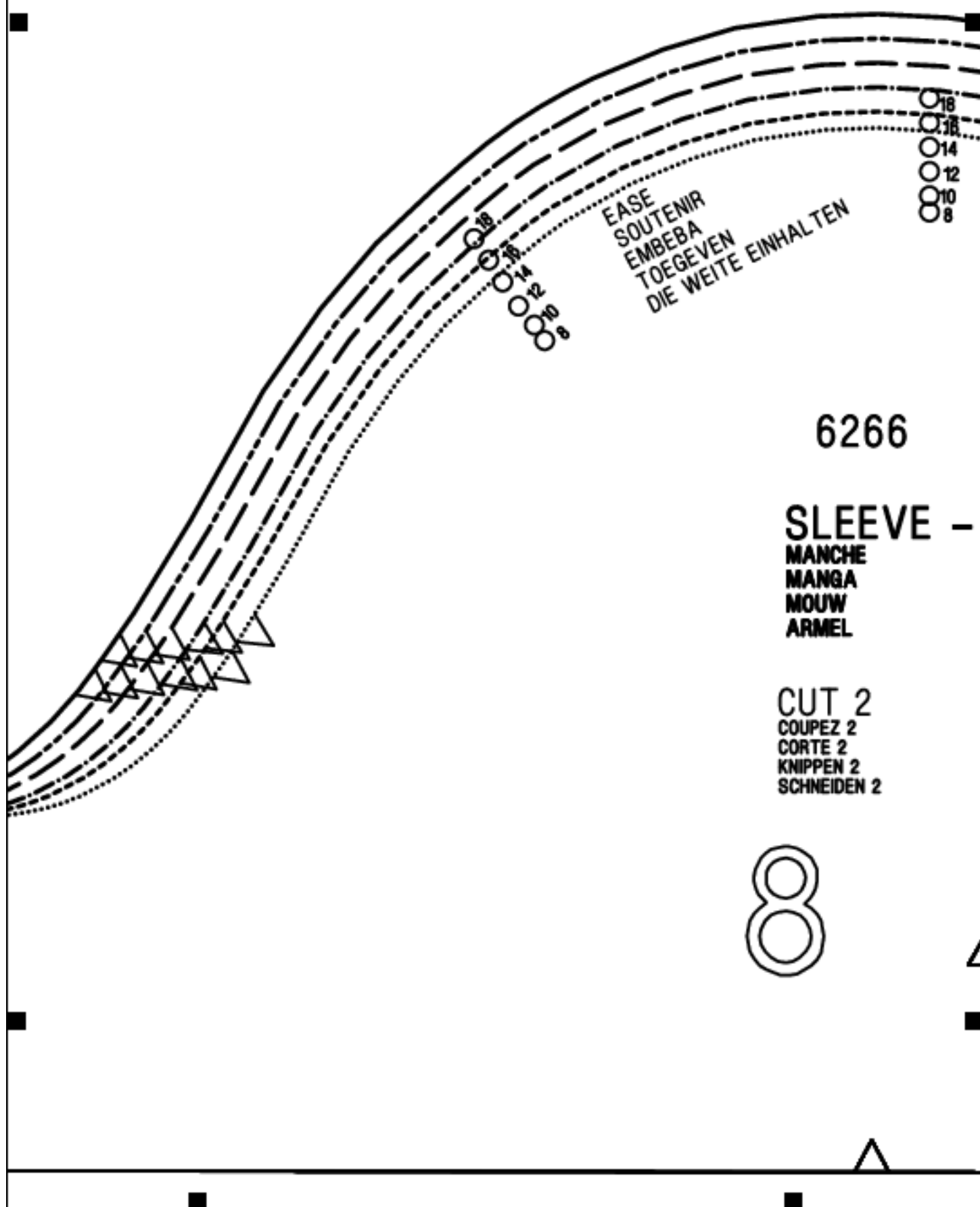
Row E, Column 2

New Look 6266 Size:8-18 Part:1 www.printsew.com

ASTL :  
ALLE  
NTURA  
EM LU  
ALLEN  
VIE

Row A, Column 3

New Look 6266 Size:8-18 Part:1 www.printsew.com



Row B, Column 3

New Look 6266 Size:8-18 Part:1 [www.printsew.com](http://www.printsew.com)

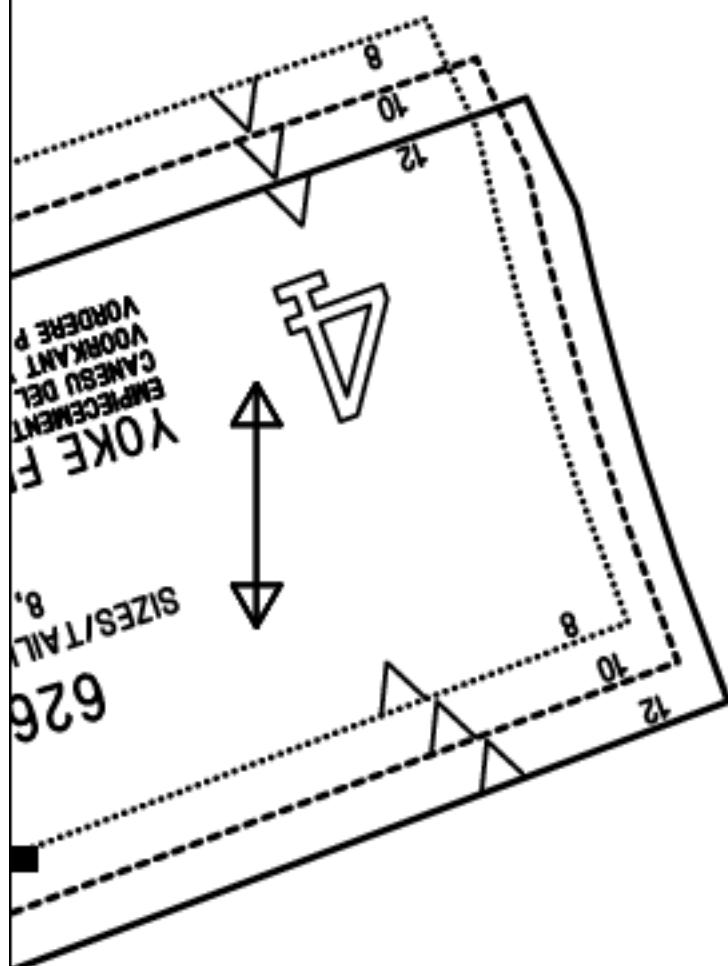
# Row C, Column 3

New Look 6266 Size:8-18 Part:1 [www.printsew.com](http://www.printsew.com)

STITCHING LINES  
LIGNES DE COUTURE  
LINEAS DEL PESPUNTE  
STIKLIJNEN  
STIEPPLINIEN

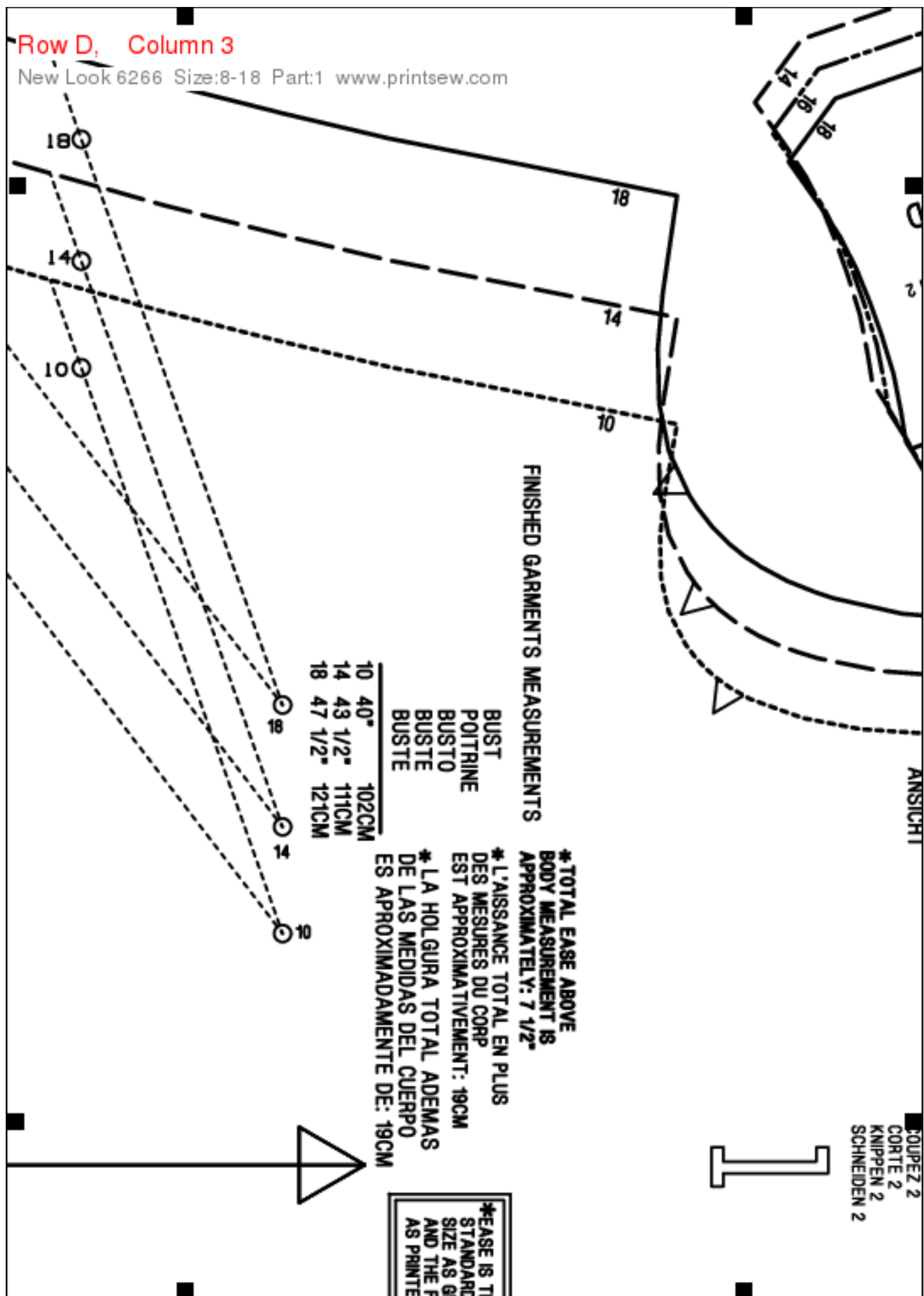


PLEAT  
PLI  
PLIEQUE  
PLOOI  
FALTE



WE USE RECYCLED PAPER  
FOR OUR PATTERN PRODUCTS  
NOUS UTILISON DU PAPIER  
RECYCLE POUR NOS PATRONS

6266
A(8-18)
0 0 0 6





Row E, Column 3

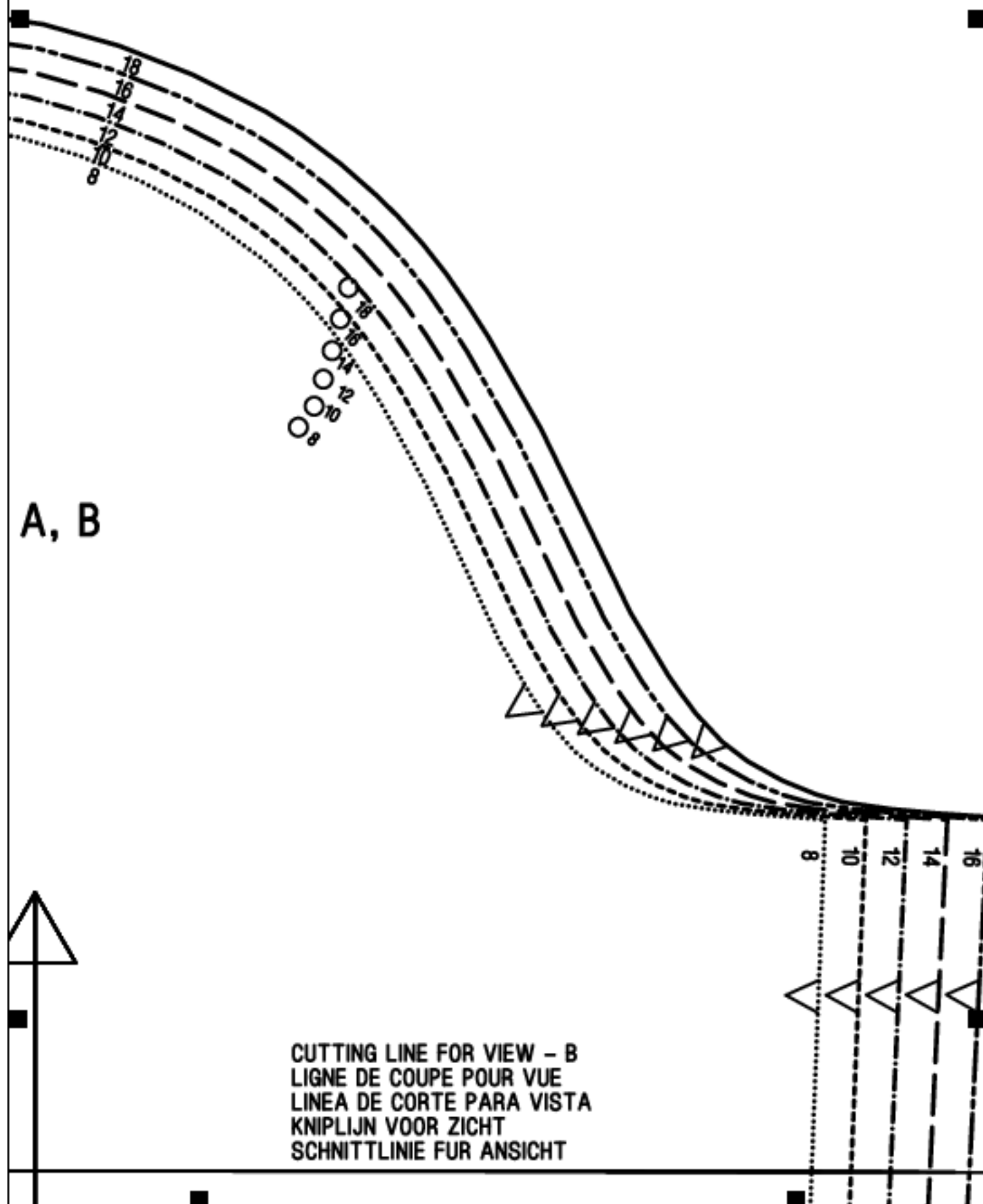
New Look 6266 Size:8-18 Part:1 www.printsew.com

THE DIFFERENCE BETWEEN THE  
BODY AND SLEEVES FOR A  
VEN ON THE ENVELOPE BACK  
FINISHED GARMENT MEASUREMENTS  
D ON THE PATTERN TISSUE.



## Row A, Column 4

New Look 6266 Size:8-18 Part:1 [www.printsew.com](http://www.printsew.com)



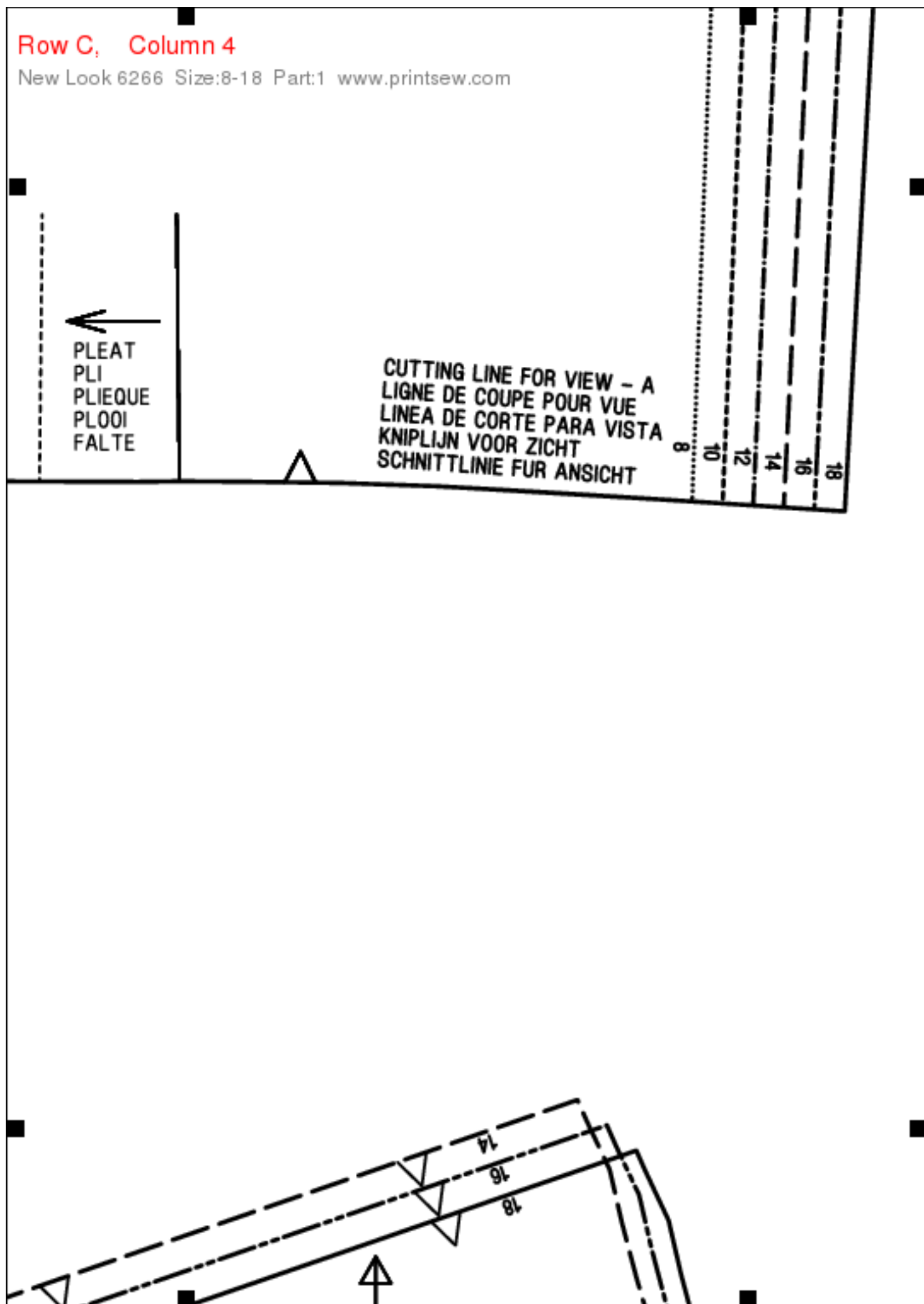
Row B, Column 4

New Look 6266 Size:8-18 Part:1 [www.printsew.com](http://www.printsew.com)



Row C, Column 4

New Look 6266 Size:8-18 Part:1 [www.printsew.com](http://www.printsew.com)



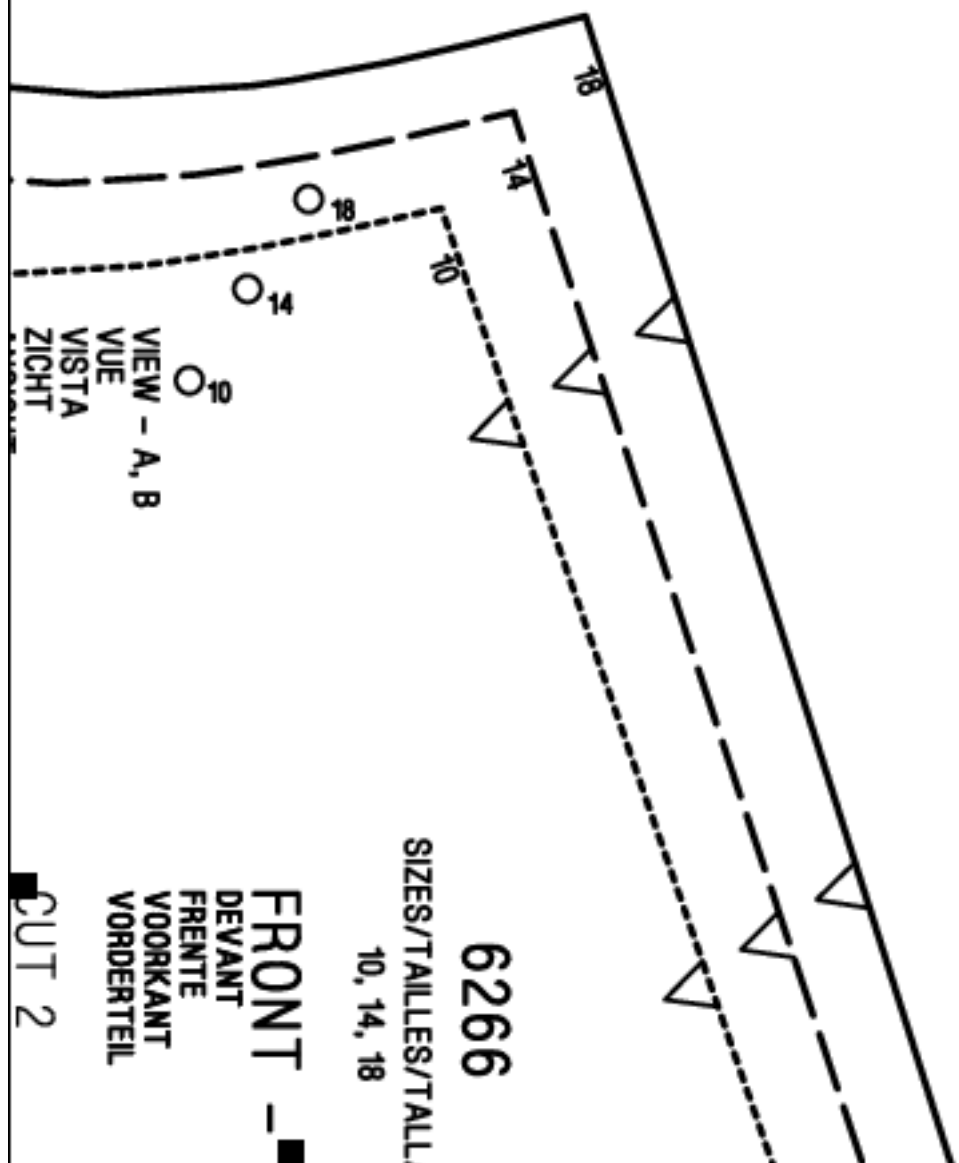
Row D, Column 4

New Look 6266 Size:8-18 Part:1 www.printsew.com

CUT 2  
COUPEZ 2  
CORTE 2  
KNIPPEN 2  
SCHNEIDEN

6266  
SIZES/TAILLES/TALLAS  
14, 16, 18

YOEKE FRONT - A, B, C  
VOORDEEL PAKK  
VOORDEEL PAKK  
VOORDEEL PAKK

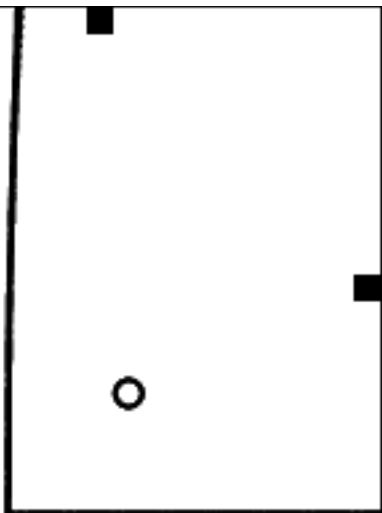


5/8 IN. HEM ALLOWED  
DURLET DE 1.5 CM.  
DOBLADILLO DE 1.5 CM.  
ZOOMTOESLAG  
MIT SAUMZUGABE

Row E, Column 4

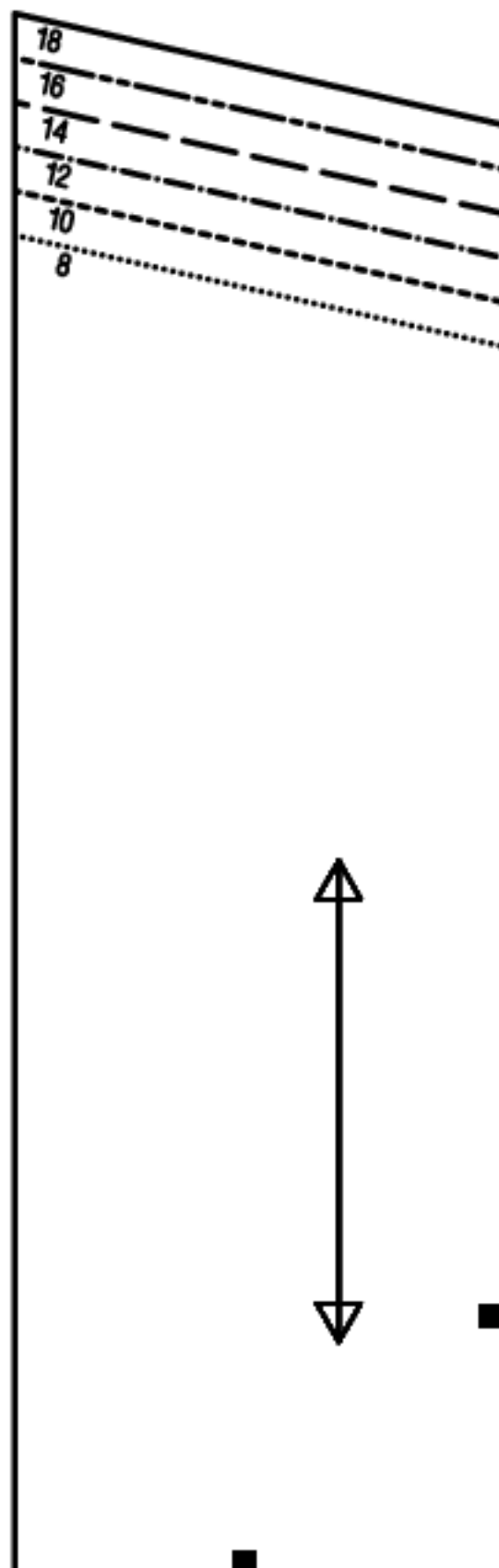
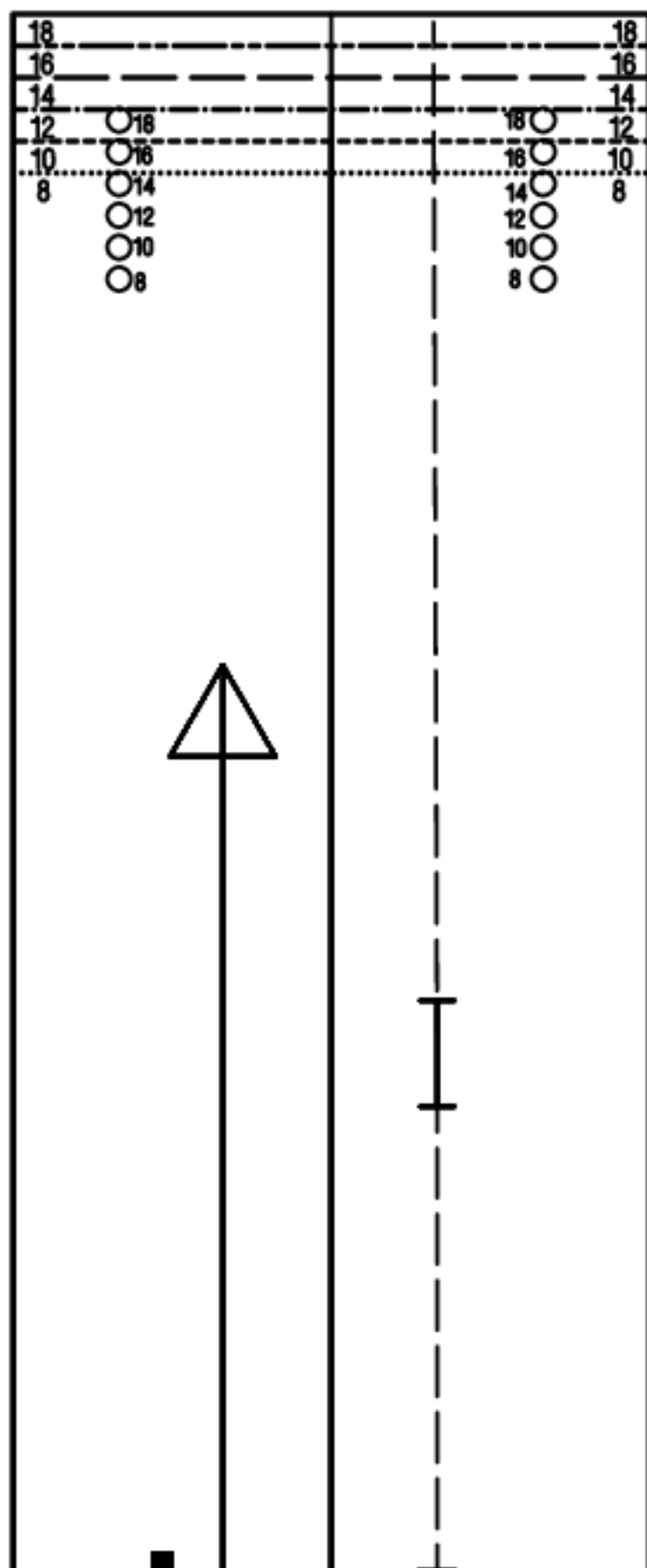
New Look 6266 Size:8-18 Part:1 www.printsew.com

C, D



# Row A, Column 5

New Look 6266 Size:8-18 Part:1 [www.printsew.com](http://www.printsew.com)

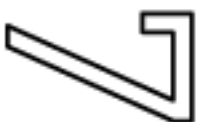




Row B, Column 5

New Look 6266 Size:8-18 Part:1 www.printsew.com

CENTER BACK  
MILIEU DU DOS  
CENTRO DE ATRAS  
MIDDEN ACHTER  
RUCKWARTIGE MITTE



6266  
COLLAR - A, B, C, D  
COL  
CUELLO  
KRAAG  
KRAGEN

CUT 2 OF FABRIC  
COUPEZ 2 DANS DU TISSU  
CORTE 2 DE TELA  
KNIP 2 DE STOF  
SCHNEIDEN 2 AUS DEM STOFF  
CUT 1 OF INTERFACING  
COUPEZ 1 DANS DE L'ENTOILAGE  
CORTE 1 DE ENTRETELA  
KNIP 1 DE BINNENWERK  
1 AUS EINLAGE



6266

FRONT BAND - A, B, C,  
BANDE DU DEVANT  
BANDA DEL FRENTE  
VOOR BAND  
VORDERE BLENDE



Row C, Column 5

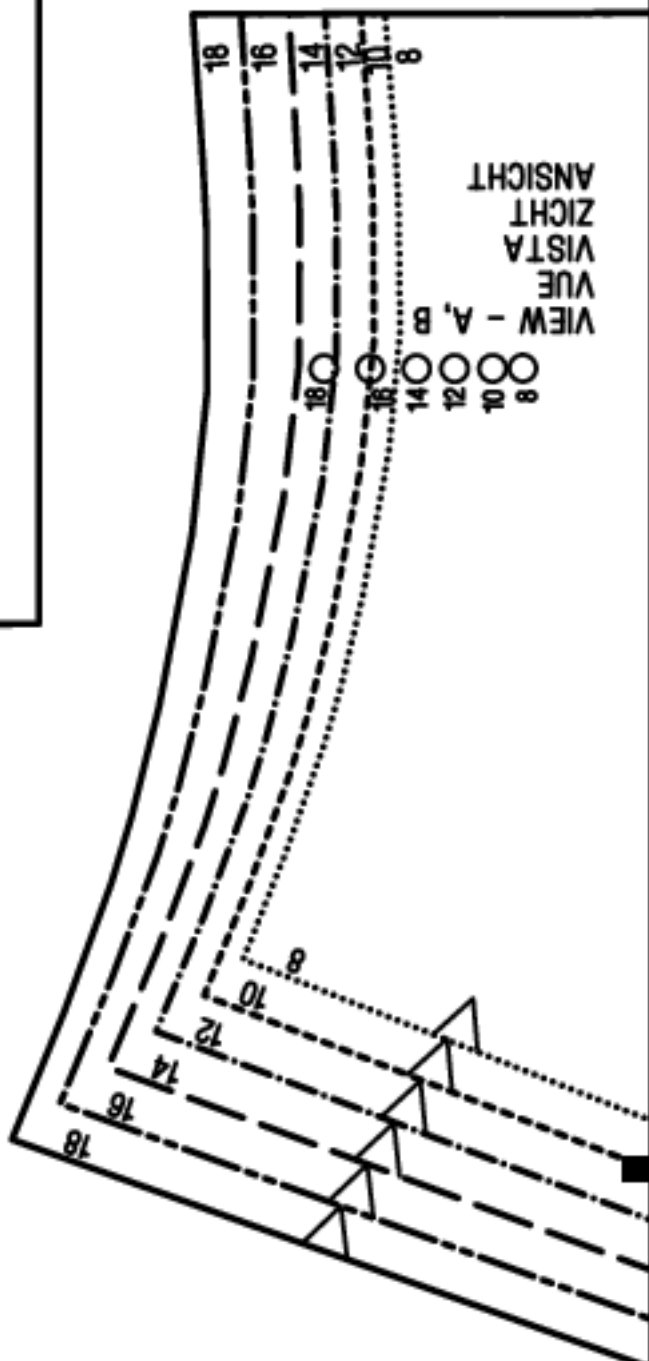
New Look 6266 Size:8-18 Part:1 www.printsew.com

CUT 2 OF FABRIC  
COUPEZ 2 DANS DU TISSU  
2 DE TELA  
DE STOF  
IDEN 2 AUS DEM STOFF

CUT 2 OF INTERFACING  
COUPEZ 2 DANS DE L'ENTOILAGE  
CORTE 2 DE ENTRETELA  
KNIP 2 DE BINNENWERK  
2 AUS EINLAGE

FOLD LINE  
LIGNE DE PLURE  
LINEA DEL DOBLEZ  
VOUWLIJN  
FALTLINIE

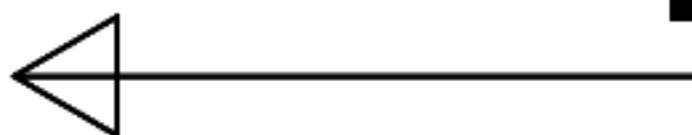
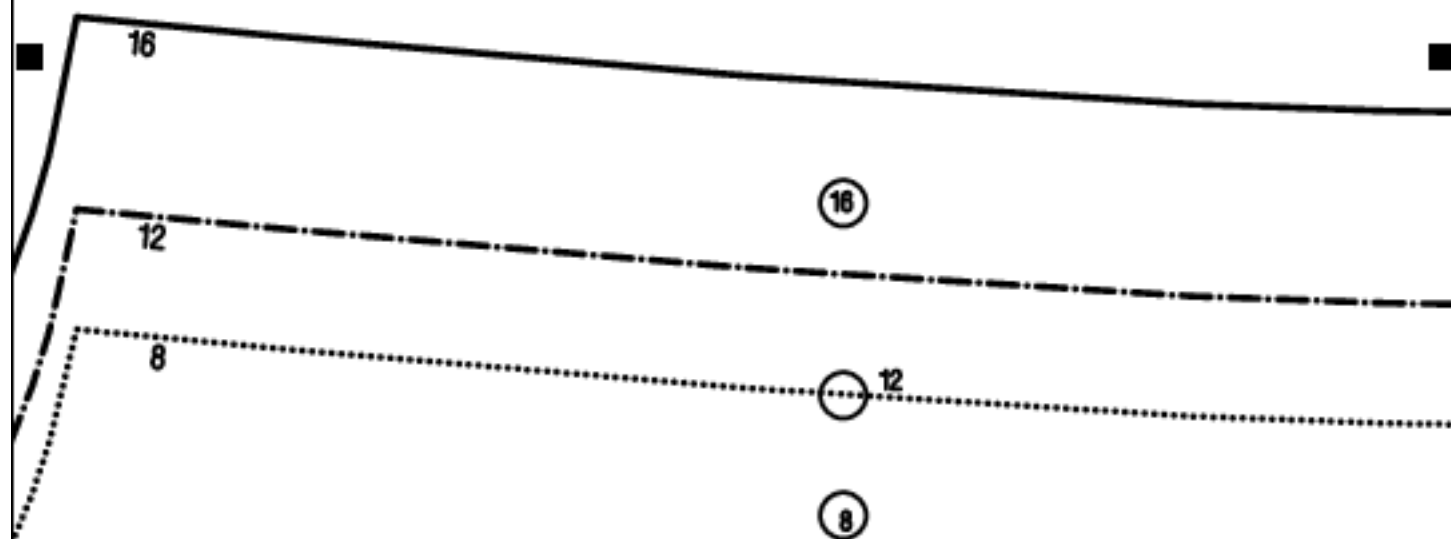
ENTER FRONT  
ILIEU DU DEVANT  
ENTRO DEL FRENTE  
BIDDEN VOOR  
ORDERE MITTE



8  
10  
12  
14  
16  
18

Row D, Column 5

New Look 6266 Size:8-18 Part:1 www.printsew.com

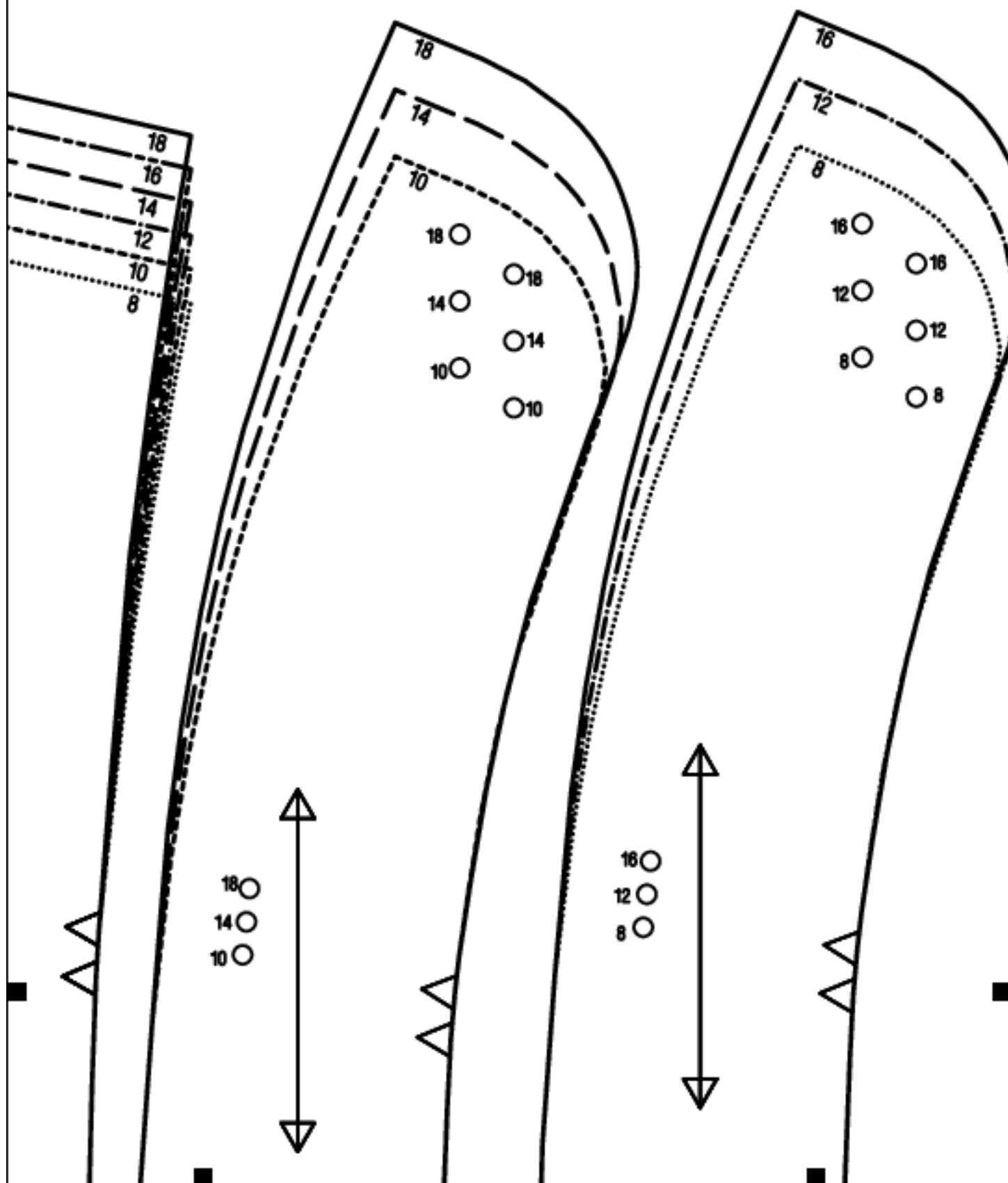


Row E, Column 5

New Look 6266 Size:8-18 Part:1 [www.printsew.com](http://www.printsew.com)

# Row A, Column 6

New Look 6266 Size:8-18 Part:1 [www.printsew.com](http://www.printsew.com)



CENTER BACK  
MILIEU DU DOS  
CENTRO DE ATRAS  
MIDDEN ACHTER  
RUCKWARTIGE MITTE

CENTER BACK  
MILIEU DU DOS  
CENTRO DE ATRAS  
MIDDEN ACHTER  
RUCKWARTIGE MITTE

6266

SIZES/TAILLES/TALLAS

8, 12, 16



NECK BAND - A, B, C, D  
BANDE DE L'ENCOLURE  
BANDA DEL ESCOTE

8 12 16

CUT 2 OF FABRIC

COUPEZ 2 DANS DU TISSU  
CORTE 2 DE TELA  
KNIP 2 DE STOF  
SCHNEIDEN 2 AUS DEM STOFF

CUT 1 OF INTERFACING

COUPEZ 1 DANS DE L'ENTOILAGE  
CORTE 1 DE ENTRETELA  
KNIP 1 DE BINNENWERK  
1 AUS EINLAG

6266

SIZES/TAILLES/TALLAS

10, 14, 18



NECK BAND - A, B, C, D  
BANDE DE L'ENCOLURE  
BANDA DEL ESCOTE

10 14 18

CUT 2 OF FABRIC

COUPEZ 2 DANS DU TISSU  
CORTE 2 DE TELA  
KNIP 2 DE STOF  
SCHNEIDEN 2 AUS DEM STOFF

CUT 1 OF INTERFACING

COUPEZ 1 DANS DE L'ENTOILAGE  
CORTE 1 DE ENTRETELA  
KNIP 1 DE BINNENWERK  
1 AUS EINLAG

8 12

10

8

10

New Look 6266 Size:8-18 Part:1 [www.printsew.com](http://www.printsew.com)

**COUPEZ 2**  
**CORTE 2**  
**KNIIPPEN 2**  
**SCHNEIDEN 2**

9979

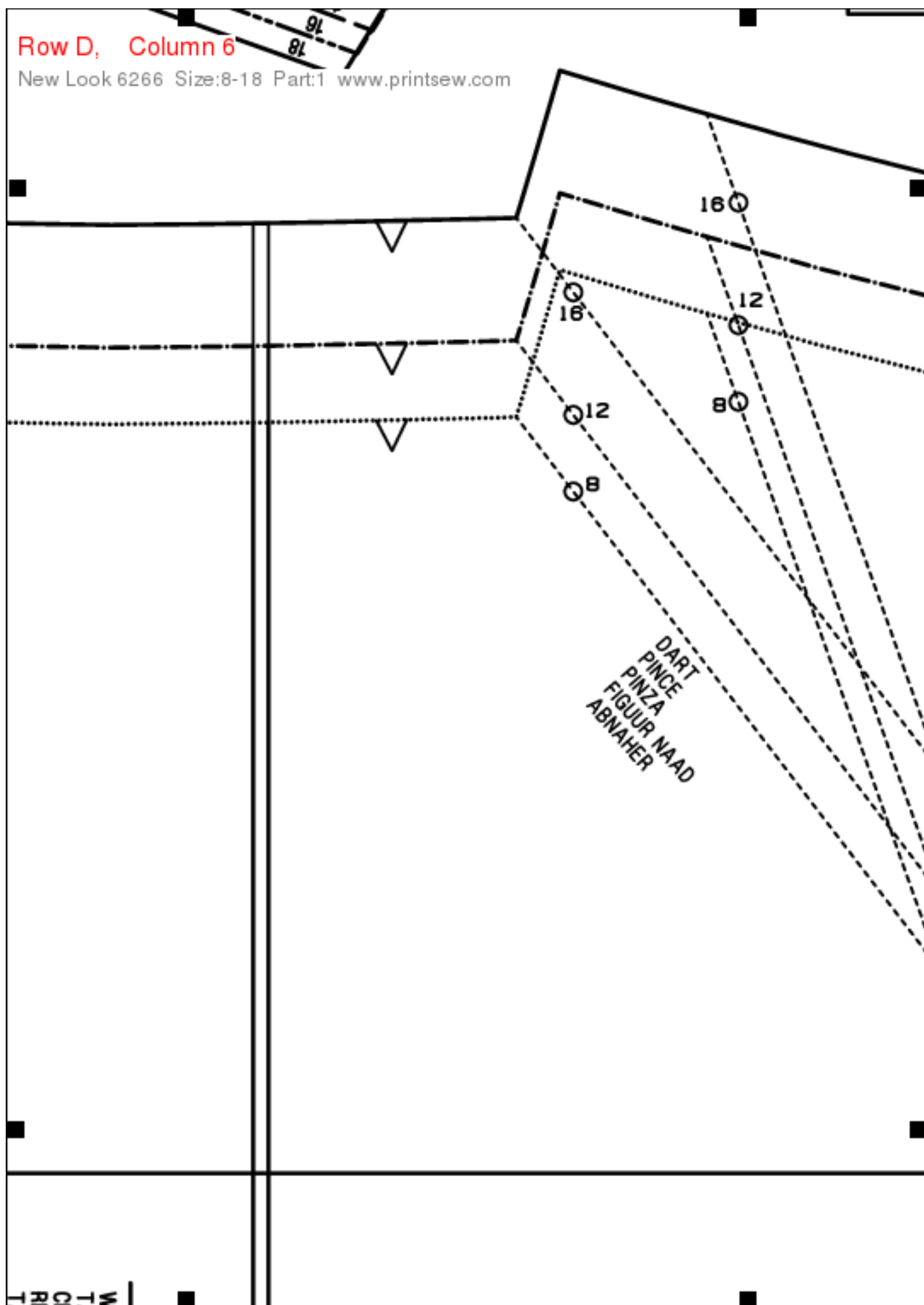
COUPEZ 1 SUR LA PLIURE  
CORTE 1 EN EL DOBLEZ  
1 OP DE STOVUM KNIPPEN  
1 IM STOFFBRUCH ZUSCHNEIDEN

9



Row D, Column 6

New Look 6266 Size:8-18 Part:1 [www.printsew.com](http://www.printsew.com)





# Row A, Column 7

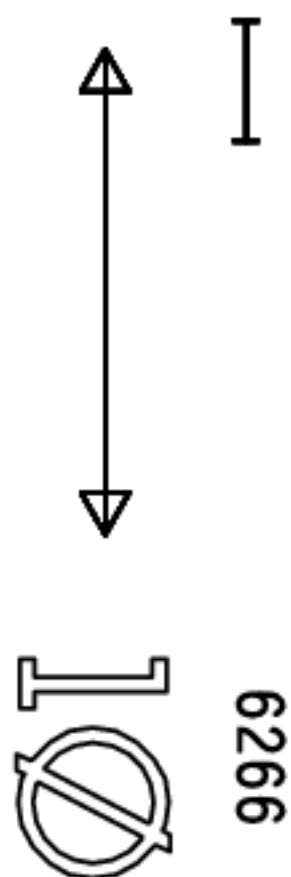
New Look 6266 Size:8-18 Part:1 [www.printsew.com](http://www.printsew.com)

18		18
16		16
14		14
12		12
10		10
8		8



**SLEEVE**  
BANDE DE LA  
BANDA DE LA

62



6266

PUNO  
MANCHET  
AUFSCHLAG

**CUT 2 OF FABRIC**

COUPEZ 2 DANS DU TISSU  
CORTE 2 DE TELA  
KNIP 2 DE STOF  
SCHNEIDEN 2 AUS DEM STOFF

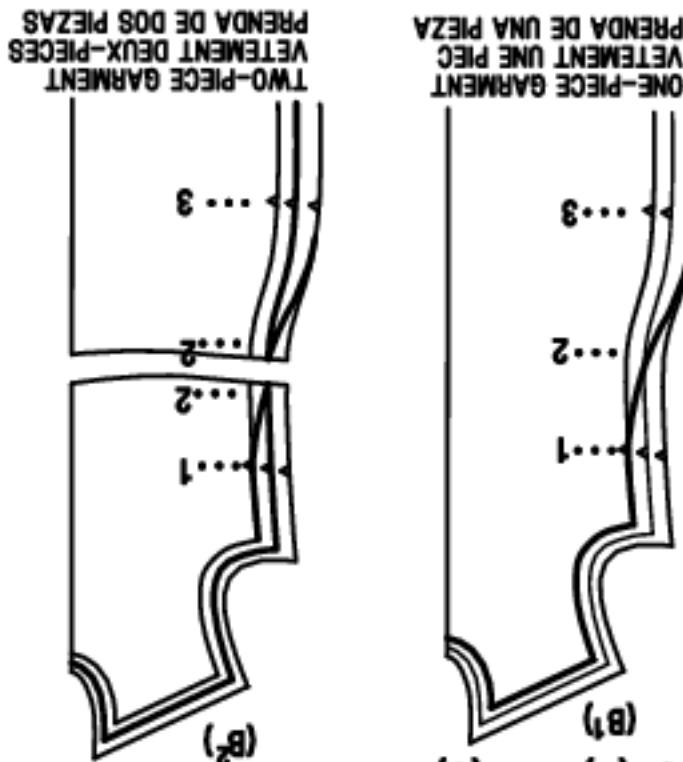
**CUT 2 OF INTERFACIN**

COUPEZ 2 DANS DE L'ENTOILAGE  
CORTE 2 DE ENTRETELA  
KNIP 2 DE BINNENWERK  
2 AUS EINLAGE



gives you the flexibility to choose your size separately for

BUST(1) WAIST(2) HIP(3)



NE SIZE figure,  
cutting line  
to your size.  
to your size.  
colored felt tip  
along marked

If your figure is a COMBINATION of TWO OR MORE  
SIZES, SELECT the cutting lines that correspond to  
your size at bust, waist and hip and MARK with a  
colored felt tip pen. Blend the newly marked lines  
from one size to the other creating your own  
CUSTOMIZED PATTERN.  
Cut along marked line. (B1) (B2)

re to adjust pattern pieces that will be stitched to pieces you've  
ted. For example, if you made a change on the front, you will need  
ke the same adjustment to the back. (A) (B1) (B2)

àtrons MULTI-TAILLE de New Look  
éthode facile d'ajuster votre patron  
ffre la flexibilité de choisir votre taille séparément  
our POITRINE(1) TAILLE(2) HANCHES(3)

Si votre silhouette est une COMBINAISON DE DEUX  
TAILLES OU PLUS, CHOISISSEZ les lignes de coupe qui  
correspondent à votre taille pour poitrine, taille et hanches  
et MARQUEZ-LES avec un stylo pointe feutre en couleur.  
Raccordez les lignes nouvellement marquées d'une taille à  
l'autre, créant ainsi votre PROPRE PATRON SUR  
MESURES. COUPEZ le long de la ligne tracée. (B1) (B2)

et les pièces de patron qui seront piquées aux pièces que vous  
ter. Par exemple, si vous avez fait un changement sur le devant,  
aire de faire les même ajustements sur le dos. (A) (B1) (B2)

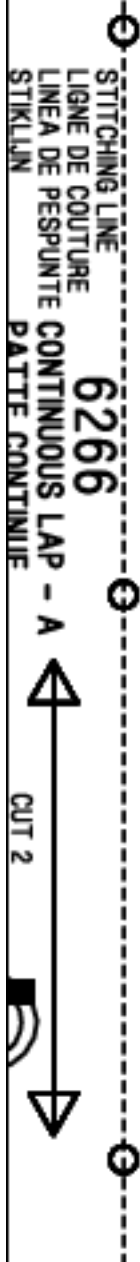
New Look en TALLAS-MULTIPLES

na manera fácil de ajustar su patron

para escoger separadamente su talla de BUSTO(1) CINTURA(2) CADERA(3)

Row C, Column 7

New Look 6266 Size:8-18 Part:1 www.printsew.com

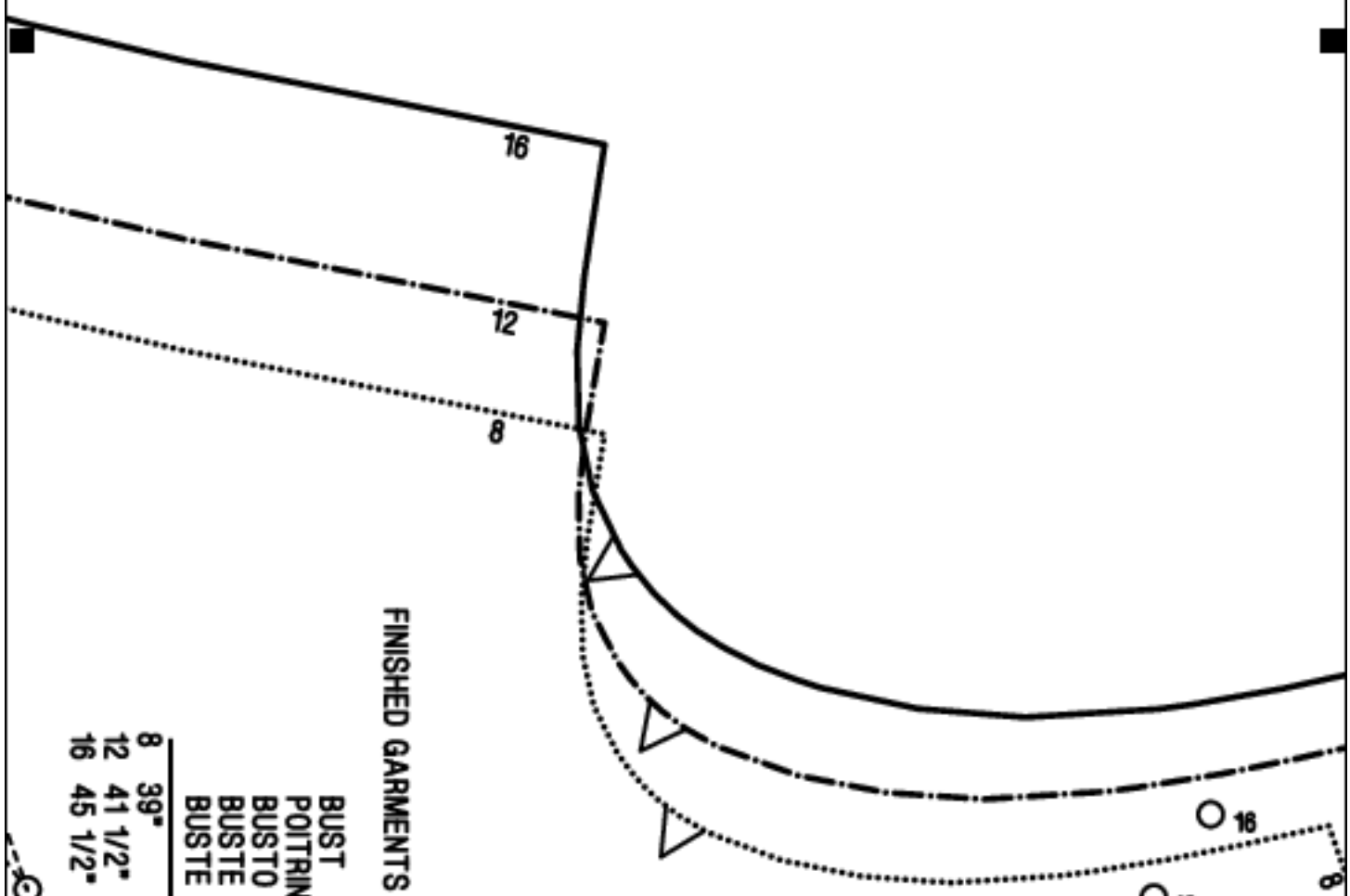


The easy way to fit your pattern

Row D, Column 7

New Look 6266 Size:8-18 Part:1 www.printsew.com

# K's MULTI-SIZE Patterns



VIEW - A, B  
VUE  
VISTA  
ZICHT  
ANSICHT

## FINISHED GARMENTS MEASUREMENTS

BUST  
POITRINE  
BUSTO  
BUSTE  
BUSTE

8	39"	99CM
12	41 1/2"	103CM
16	45 1/2"	116CM

\*TOTAL EASE ABOVE  
BODY MEASUREMENT IS  
APPROXIMATELY: 7 1/2" 19CM

\*EASE IS THE DIFFERENCE  
STANDARD BODY MEAS-  
SIZE AS GIVEN ON THE  
AND THE FINISHED GAR-  
AS PRINTED ON THE PA-



6266  
SIZES/TAILLES/TAL  
8, 12, 16

FRONT  
DEVANT  
FRENTE  
VOORKANT  
VORDERTEIL

CUT 2  
COUPEZ 2  
CORTE 2  
KNIPPEN 2  
SCHNEIDEN 2



LAS

- A, B, C, D

Row E, Column 7

New Look 6266 Size:8-18 Part:1 www.printsew.com





Row A, Column 8

New Look 6266 Size:8-18 Part:1 [www.printsew.com](http://www.printsew.com)












CUFF - A  
POIGNET



## Row B, Column 8

New Look 6266 Size:8-18 Part:1 [www.printsew.com](http://www.printsew.com)

	
	
	
	8
	10
	12
	14
	16
	18

Si usted tiene un figura  
corresponde solamente a  
TALLA, simplemente si  
la línea de corte para  
Marque con una estera  
colg y punta suave.  
(A) la línea marcada.  
No olvide cortar  
corregido. Por  
hacer los misn

# Row C, Column 8

New Look 6266 Size:8-18 Part:1 www.printsew.com

## Patrones

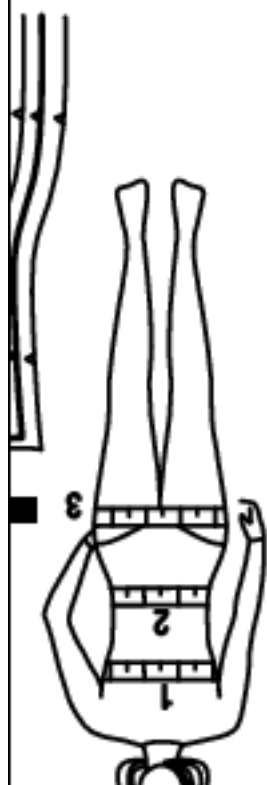
Veillez à ajuster  
venez de rectifier  
il sera nécessaire

Si vous avez une silhouette  
TAILLE, il vous suffira  
CHOISIR la ligne de coupe  
correspond à votre TAILLE  
MARQUEZ-LA avec un  
pointe feutre en coule  
COUPEZ le long la ligne  
tracée. (A)

Les P  
La m  
vous o  
p

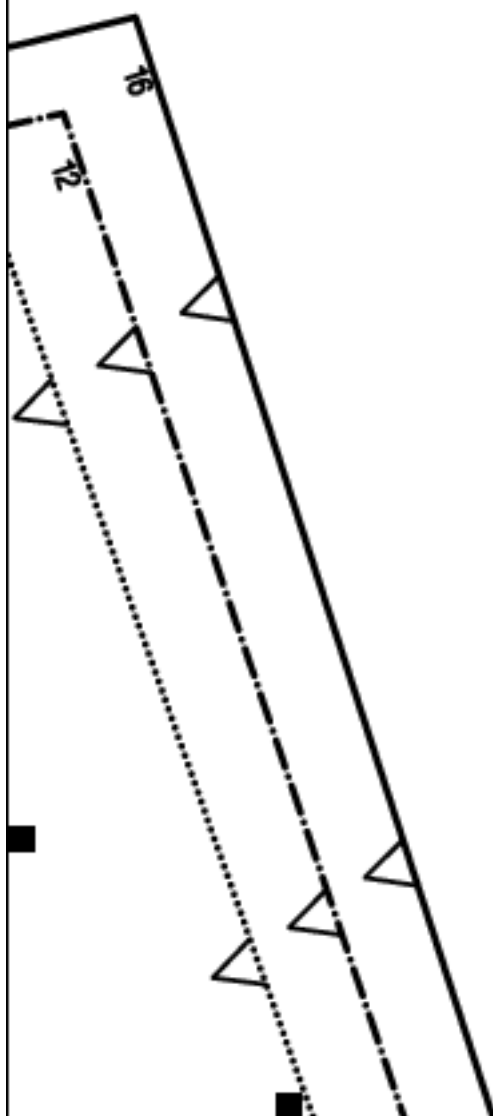
Be su  
ajust  
to ma

If you have a Old  
just SELECT the  
that correspond  
MARK with a co  
pen and CUT alo  
line. (A)



Row D, Column 8

New Look 6266 Size:8-18 Part:1 www.printsew.com



Row E, Column 8

New Look 6266 Size:8-18 Part:1 [www.printsew.com](http://www.printsew.com)

