

sew

ISSUE 153 SEPTEMBER 2021

PATTERN DOWNLOAD

CUT OUT & KEEP

ARIANA DRESS

Designer: Posner and Posner

Magazine page: 24



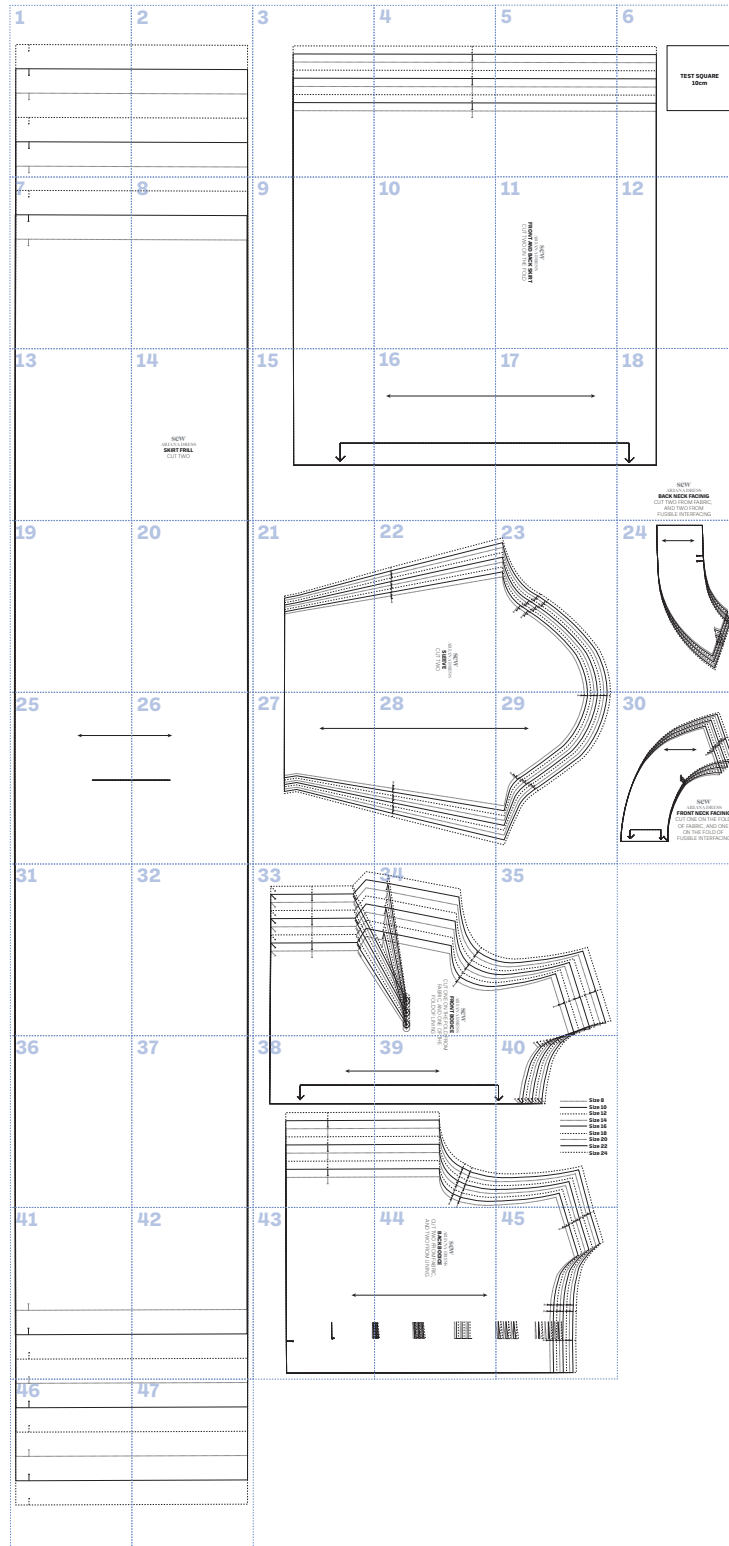
IN YOUR PRINT MENU, UNDER SIZE OPTIONS, BE SURE TO
SELECT '**ACTUAL SIZE/100%**', INSTEAD OF 'FIT TO PAGE'

© ACEVILLE PUBLICATIONS LTD | SEWMAG.CO.UK

All projects, templates and patterns are for personal home use only and cannot be sold or used for commercial purposes.

sew
sewmag.co.uk

PATTERN LAYOUT



YOUR SIZING CHART

	8	10	12	14	16	18	20	22	24
Bust cm	78	83	88	93	98	103	108	113	118
Waist cm	59	64	69	74	79	84	89	94	99
Hip cm	85	88	93	98	103	108	113	118	123
Back neck to waist	39	40	41	42	43	44	45	46	47

Once you have your body measurements, choose the closest size from the chart below. Remember, there will be variations depending on which fabric and pattern you choose, so always make a toile first.

1

I

I

I

I

I

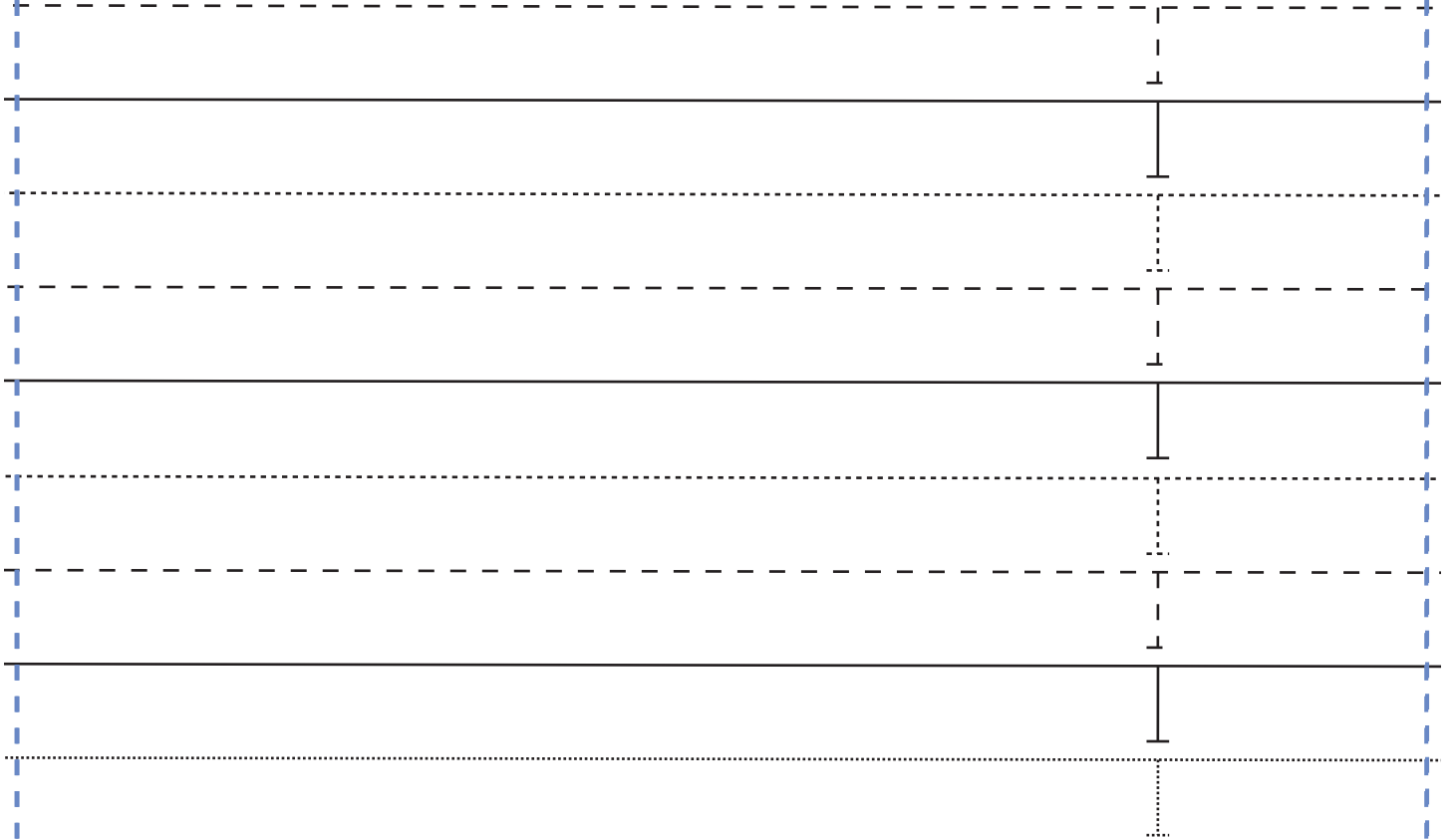
I

2

3

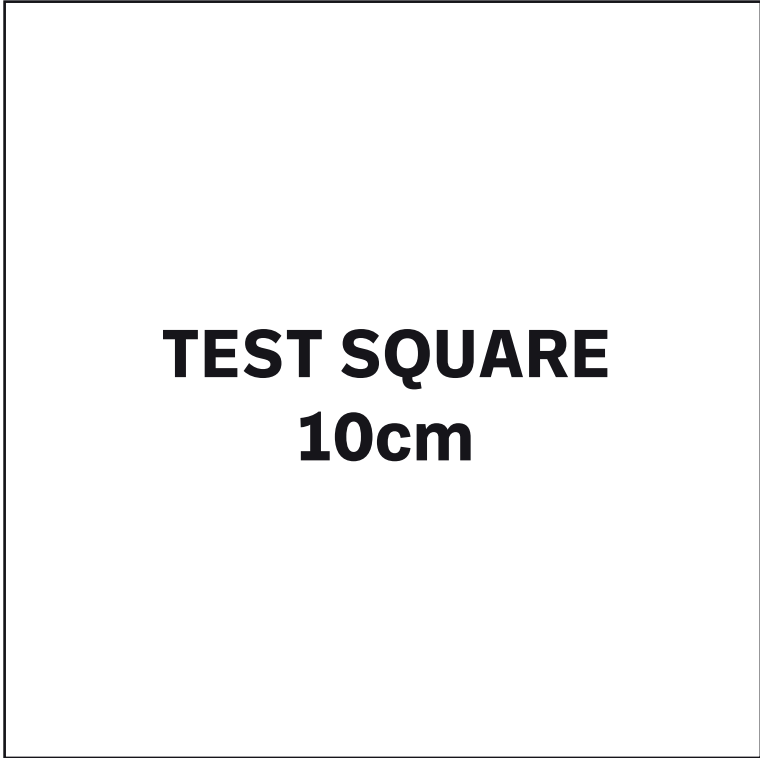
The form consists of a large rectangular area defined by a dashed blue border. On the left side of this area, there is a vertical solid black line. To the right of this line, there are several horizontal lines: a solid black line at the top, followed by a dashed black line, a dotted black line, another dashed black line, a solid black line, another dotted black line, and a final dashed black line at the bottom. This layout is typical for a sewing pattern piece, where the solid lines represent the main body and the dashed/dotted lines represent seam allowances or fold lines.

4



5

6



7



8

9

10

11

SEW
ARIANA DRESS
FRONT AND BACK SKIRT
CUT TWO ON THE FOLD

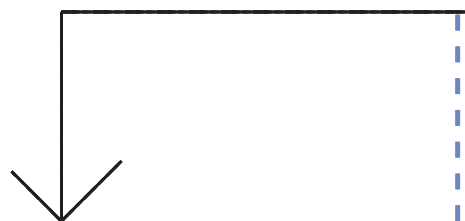
12

13

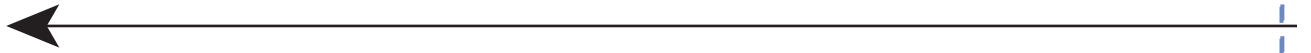
14

sew
ARIANA DRESS
SKIRT FRILL
CUT TWO

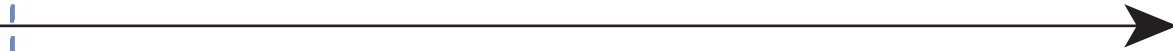
15



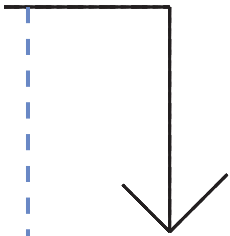
16



17



18

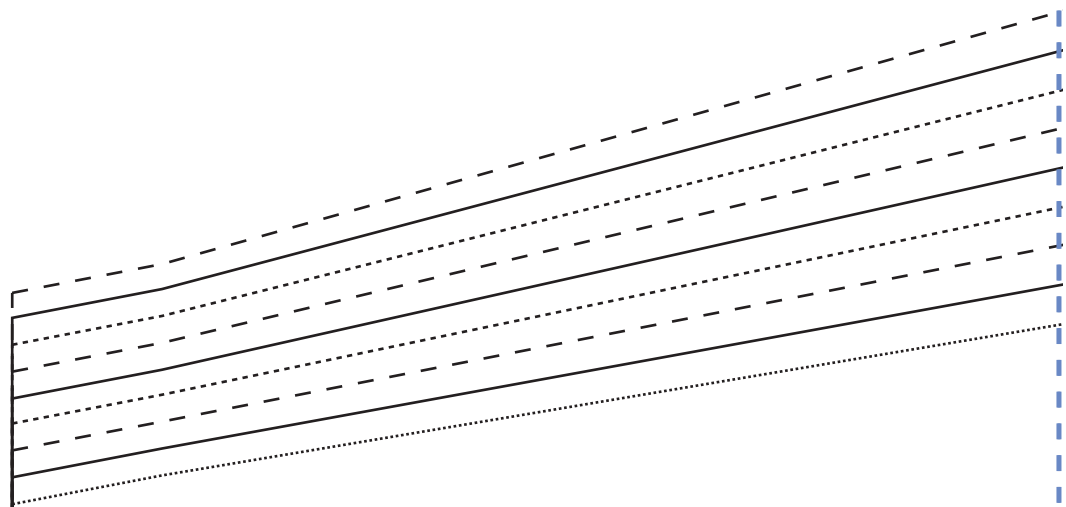


sew
ARIANA DRESS
BACK NECK FACING
CUT TWO FROM FABRIC,
AND TWO FROM
FUSIBLE INTERFACING

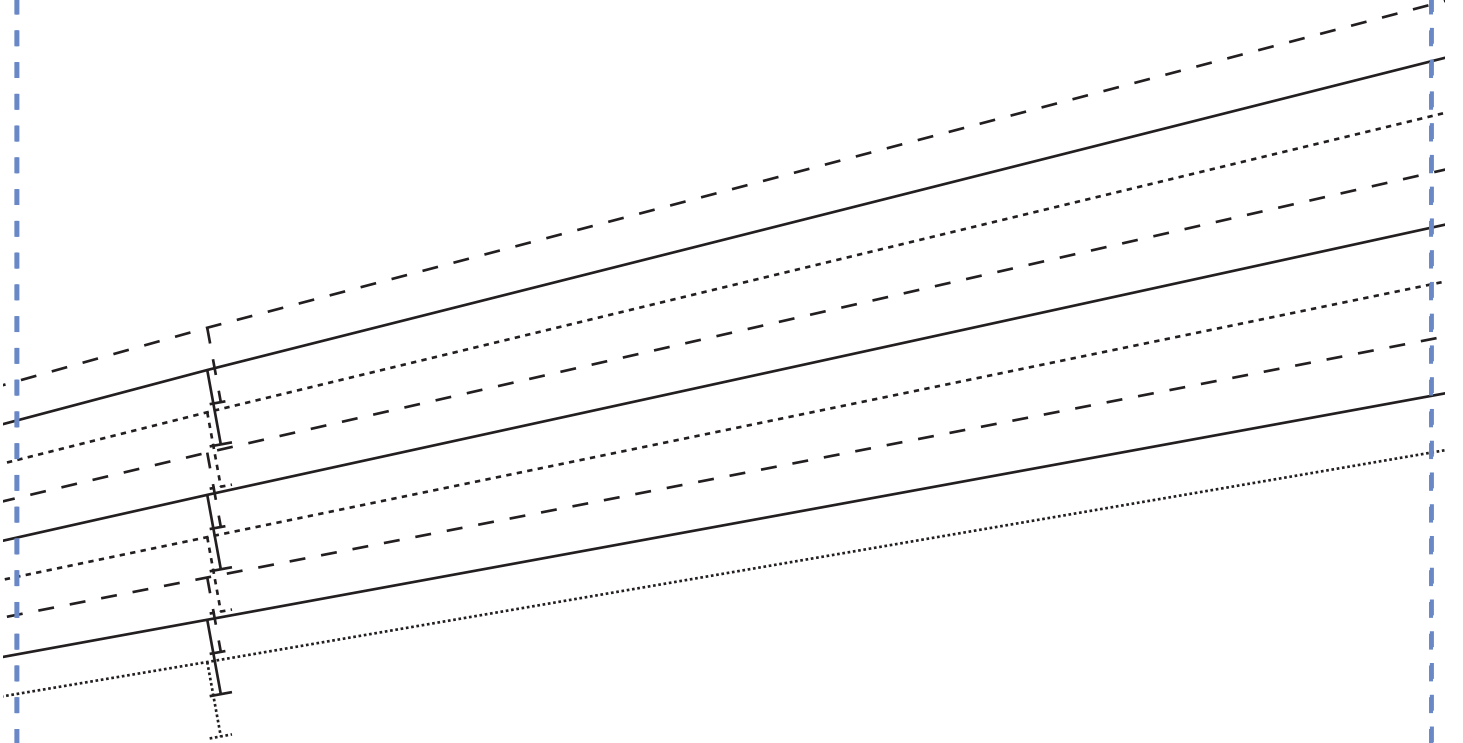
19

20

21

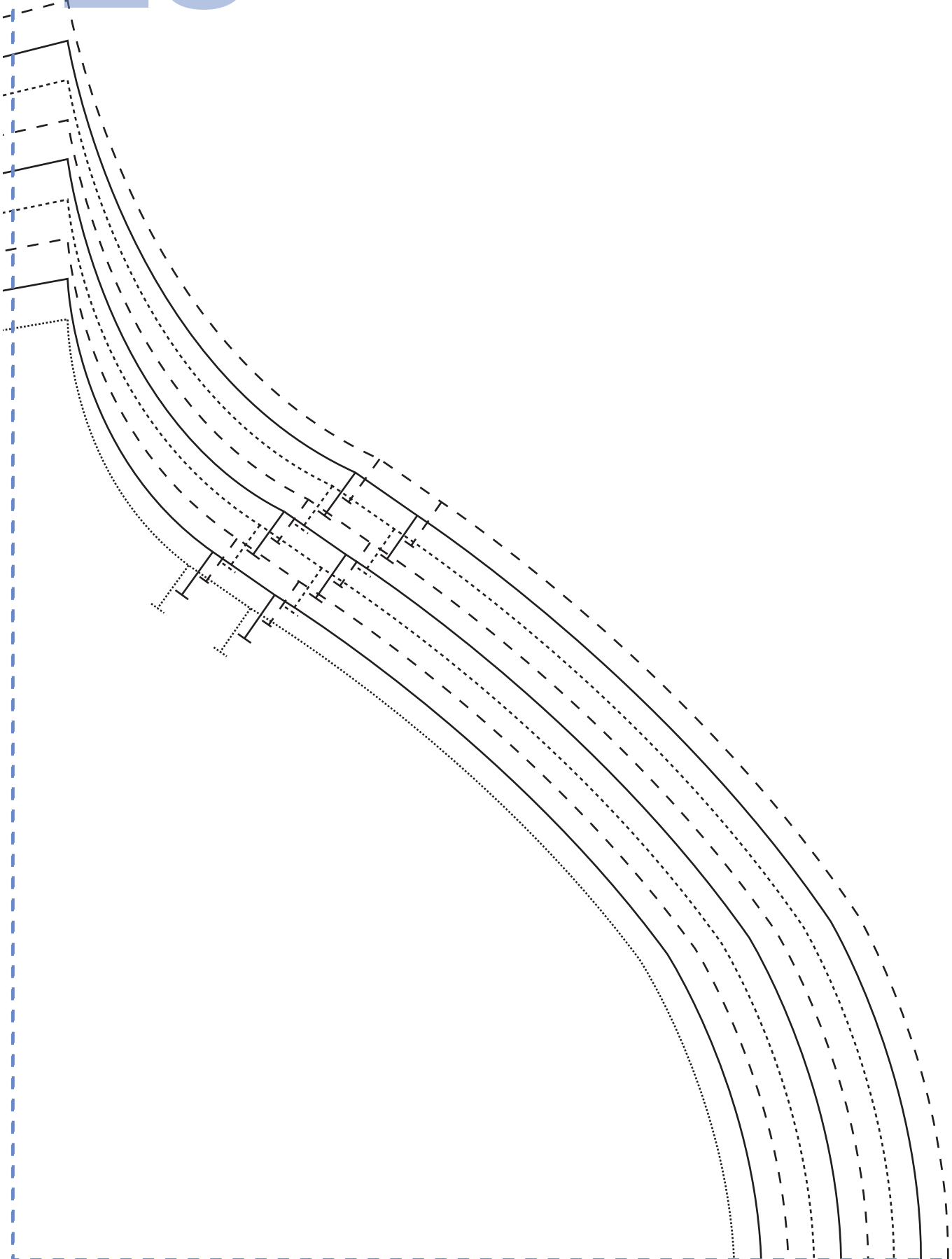


22

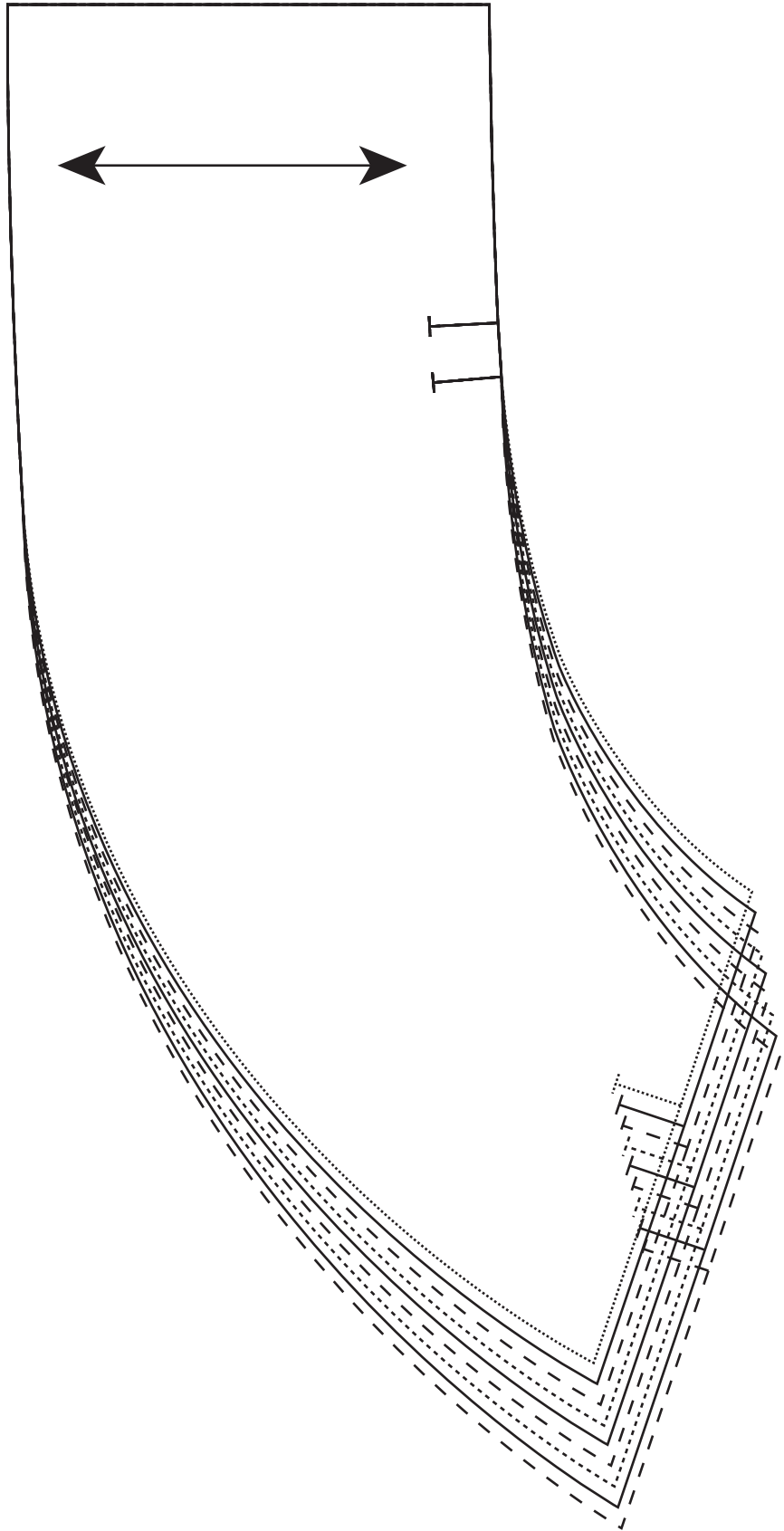


SEW
ARIANA DRESS
SLEEVE
CUT TWO

23



24



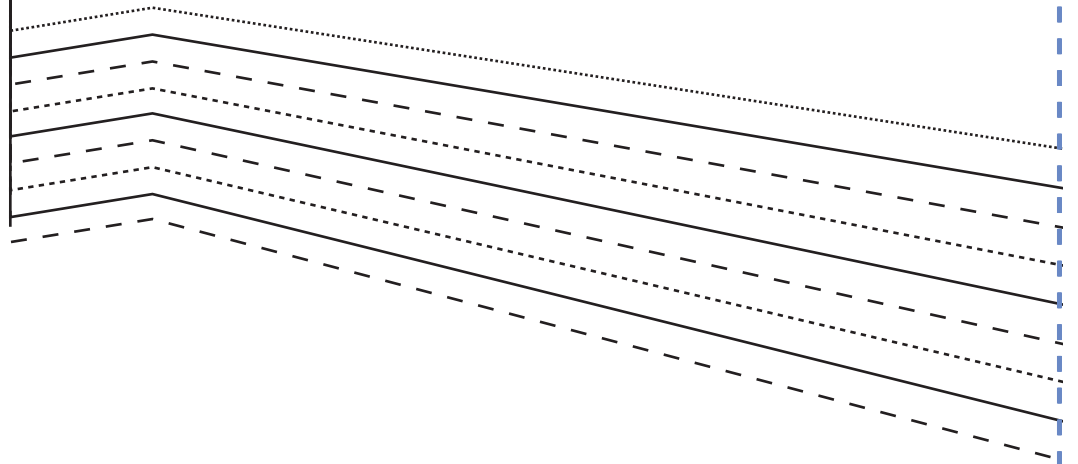
25



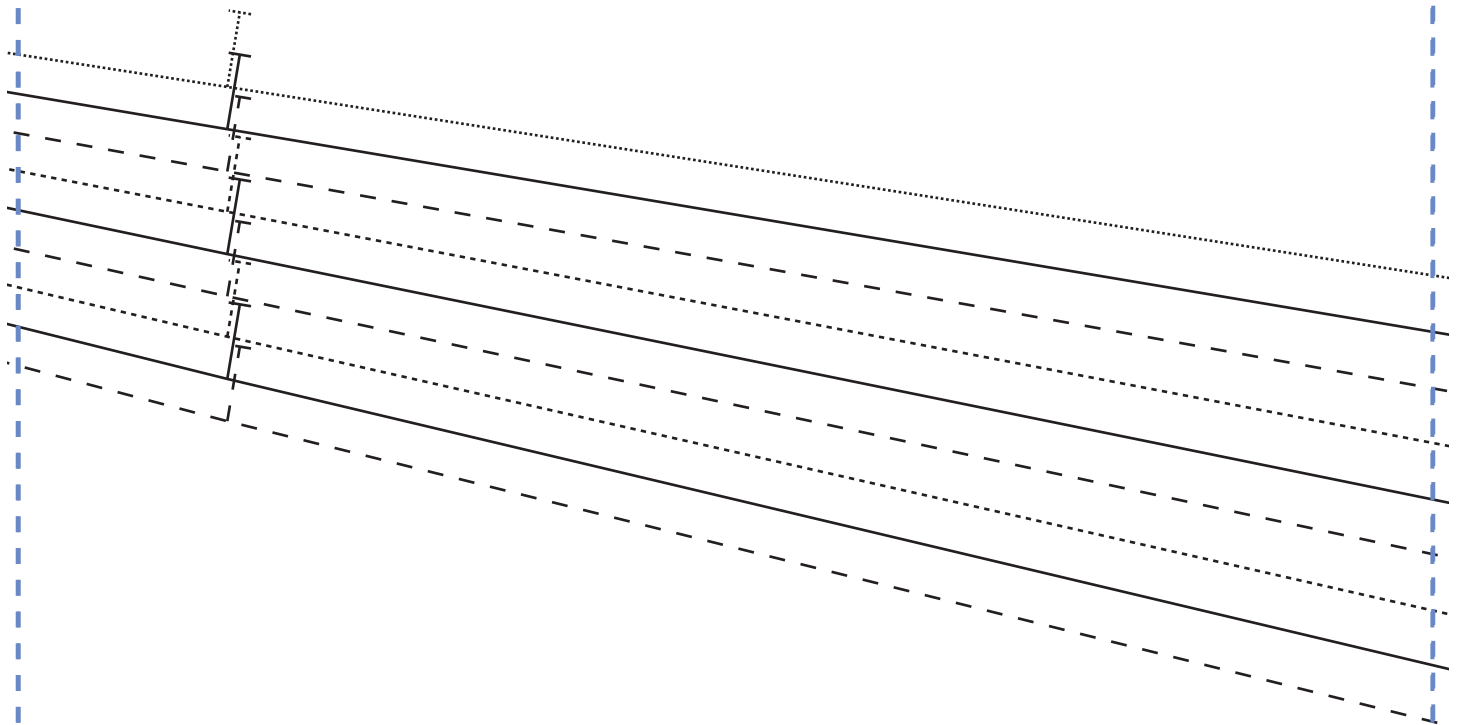
26



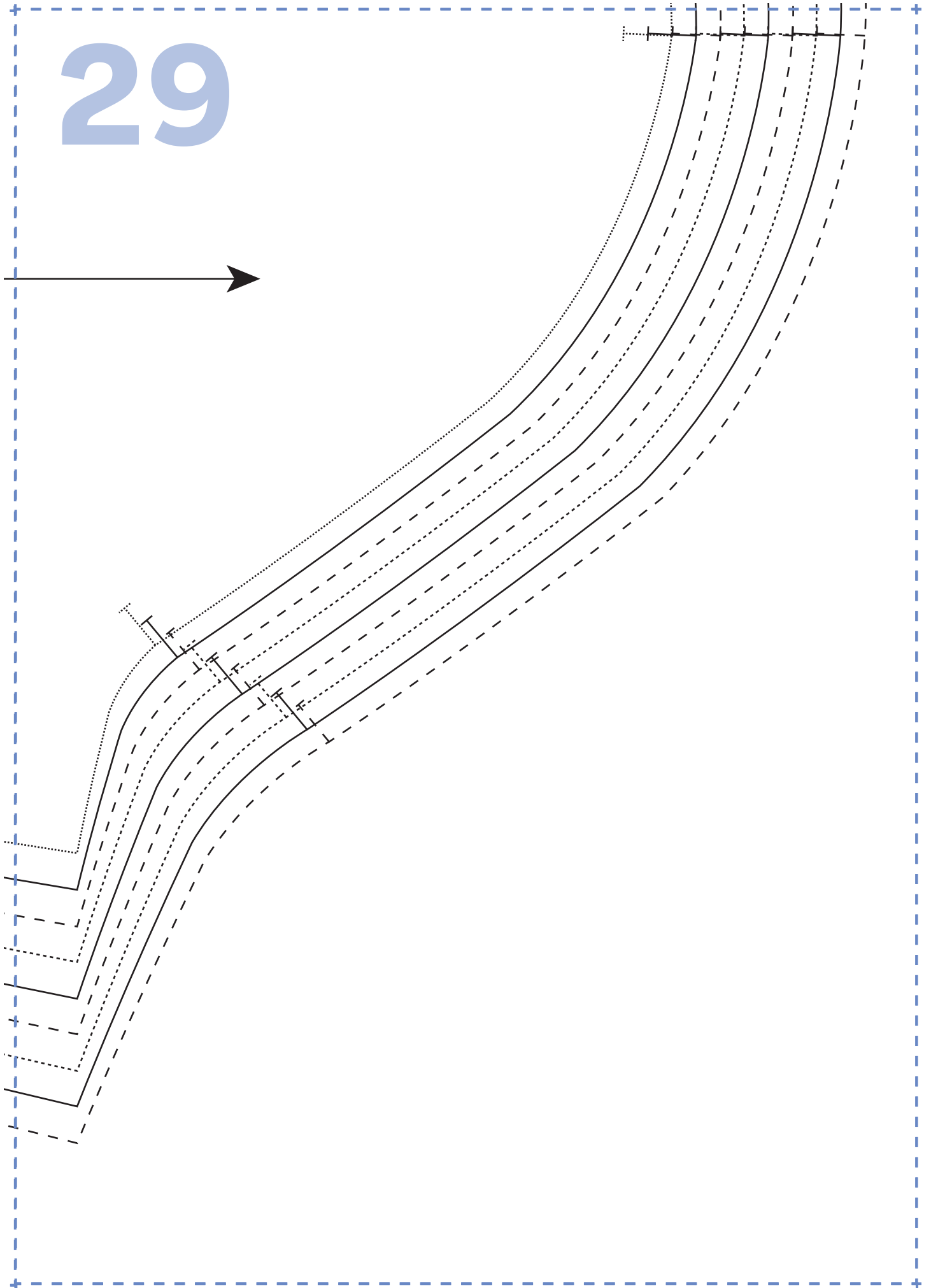
27



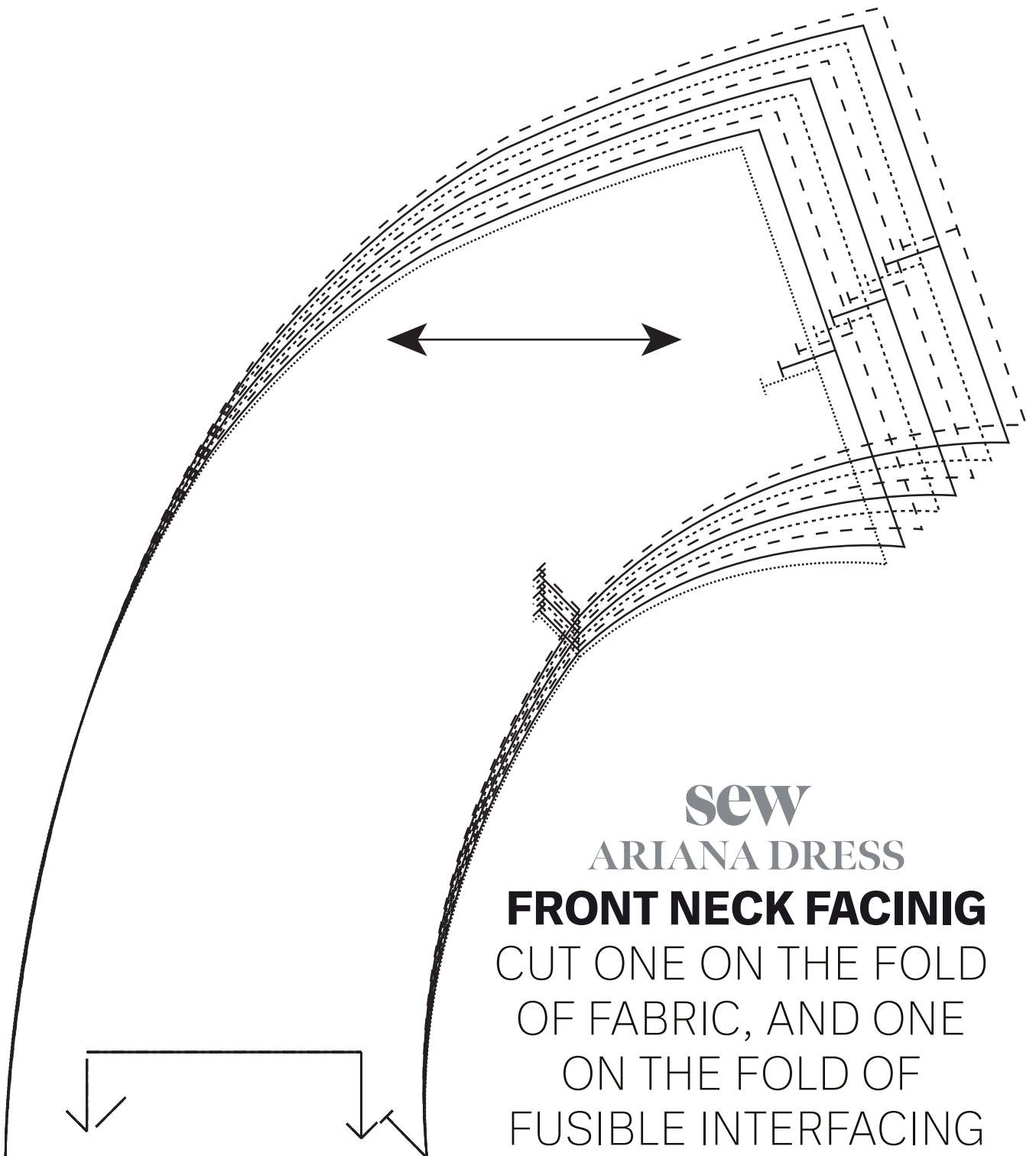
28



29



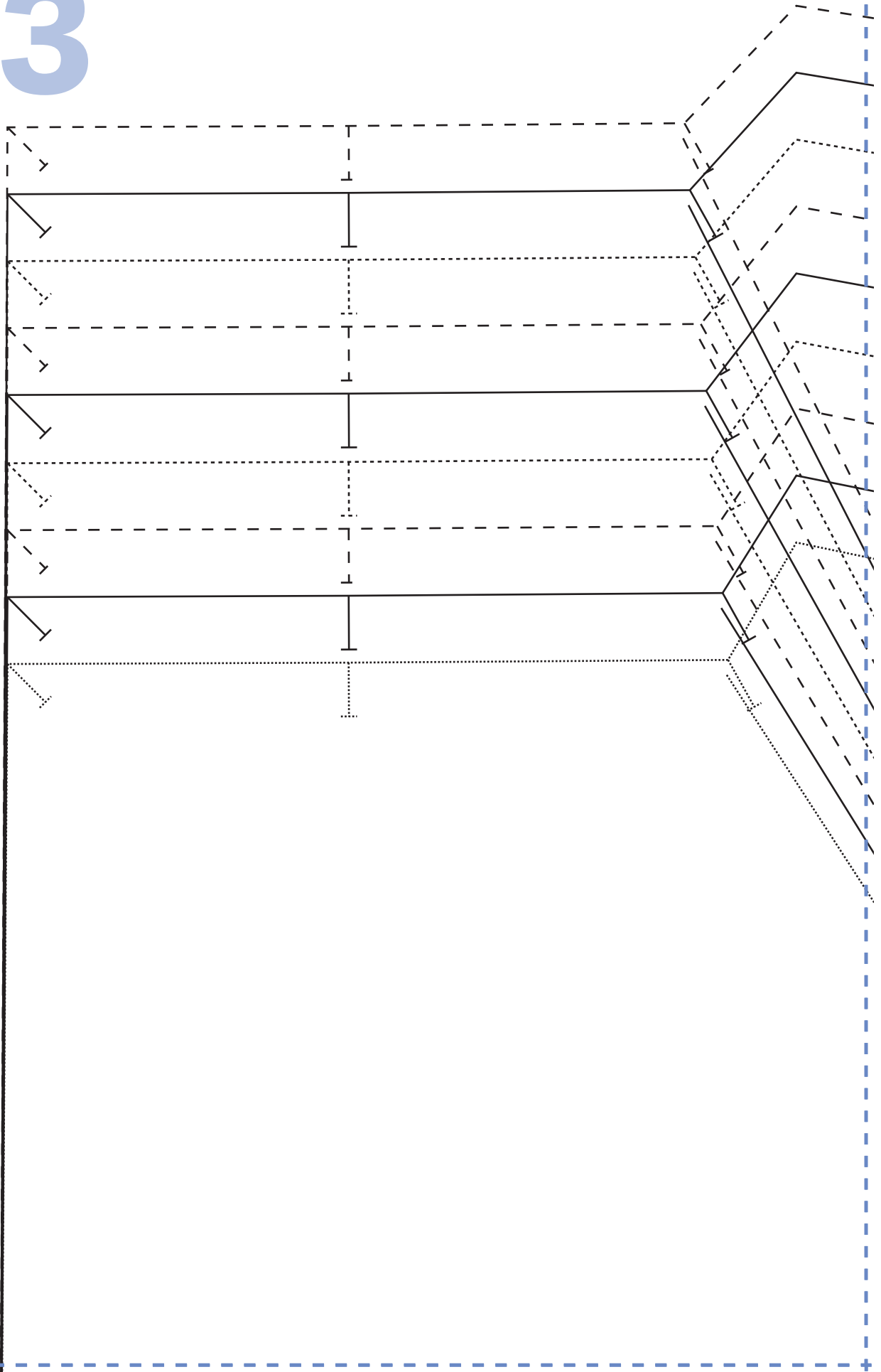
30



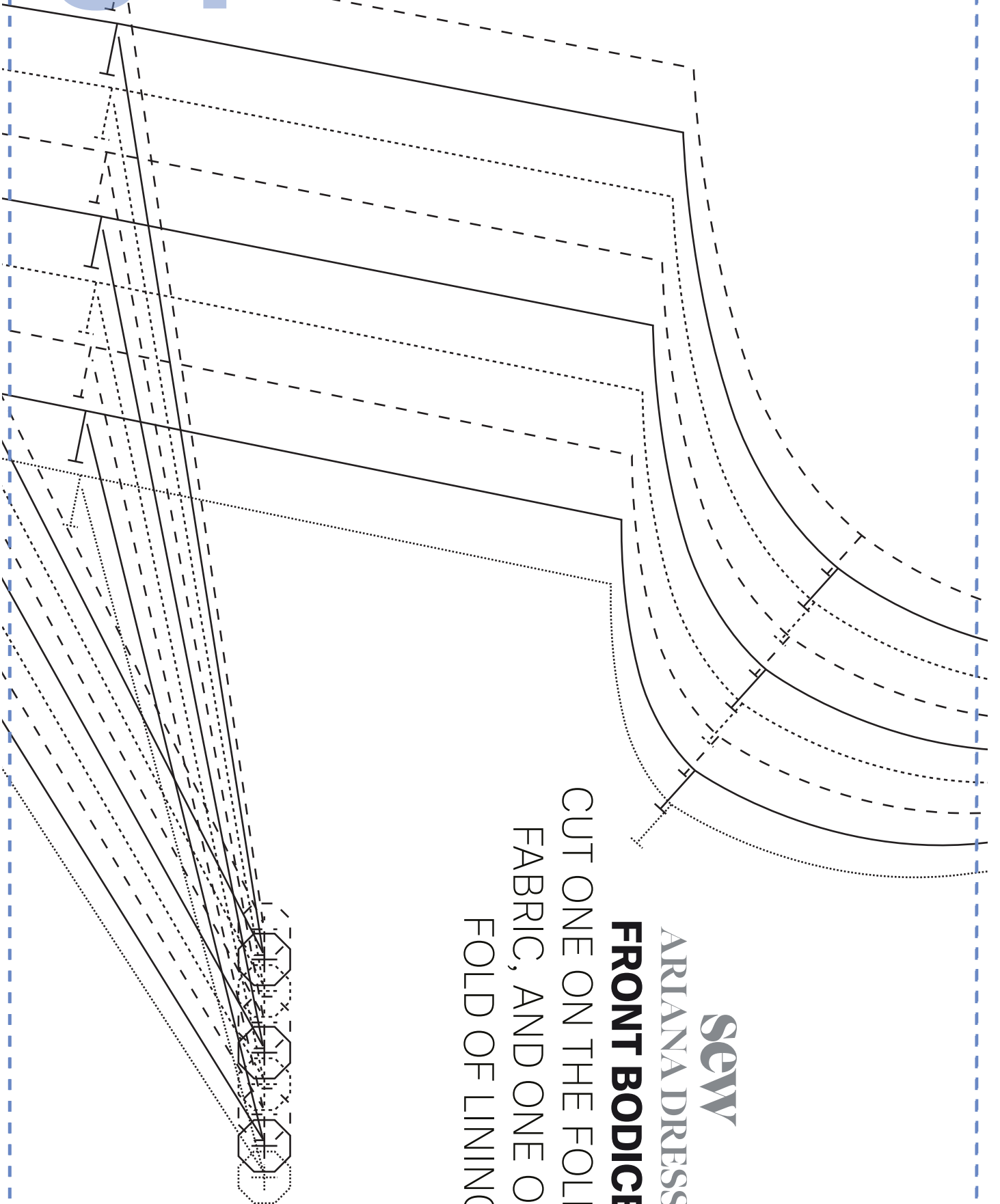
31

32

33

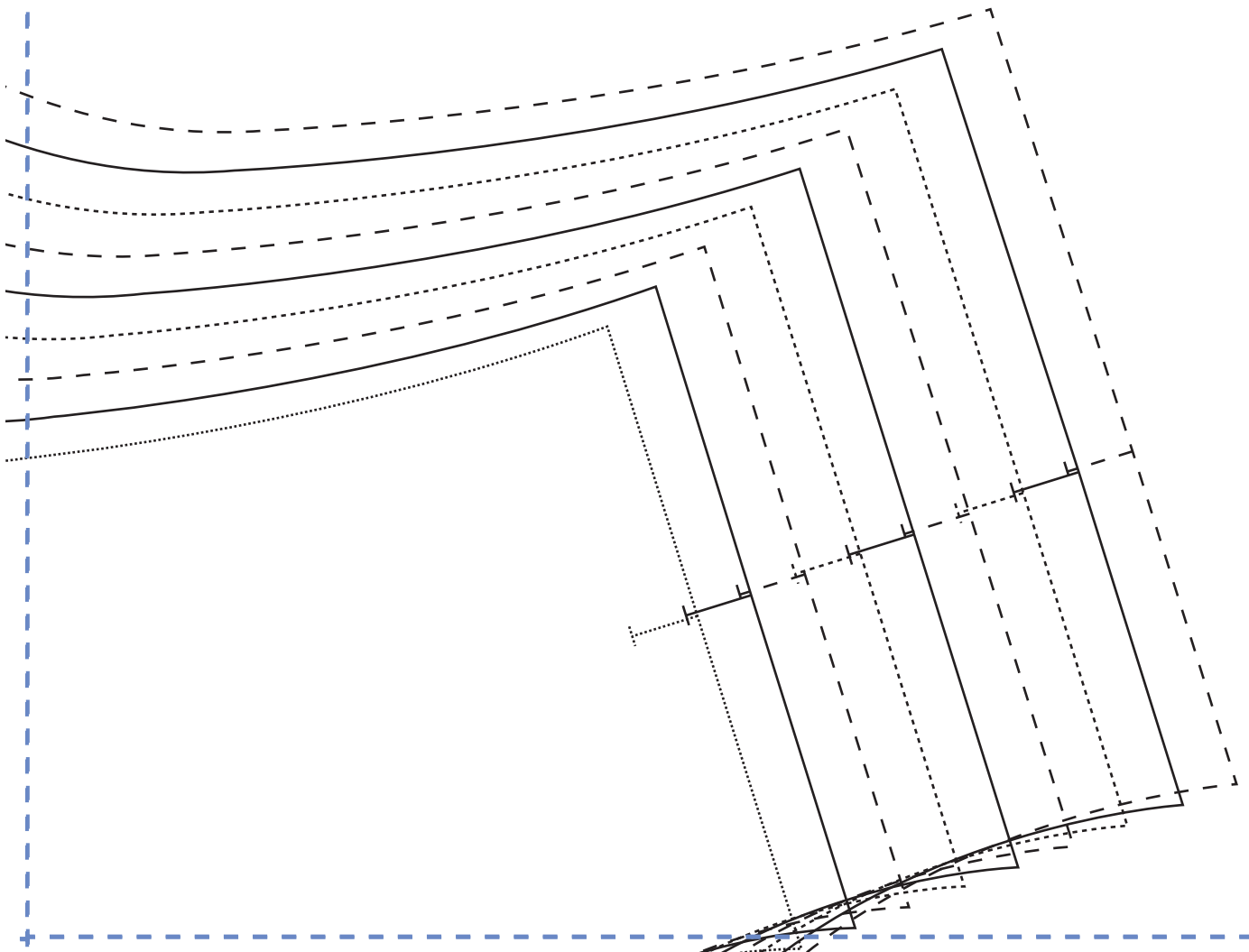


34



SEW
ARIANA DRESS
FRONT BODICE
CUT ONE ON THE FOLD OF
FABRIC, AND ONE OF
FOLD OF LINING

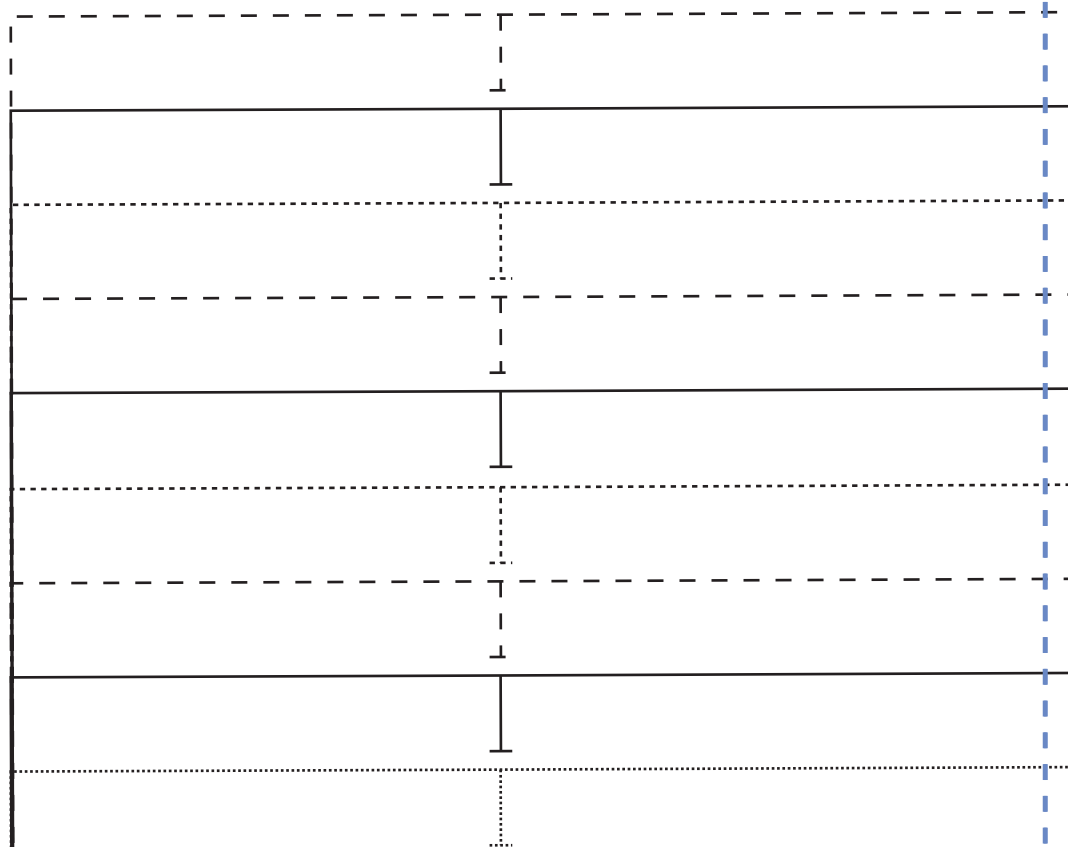
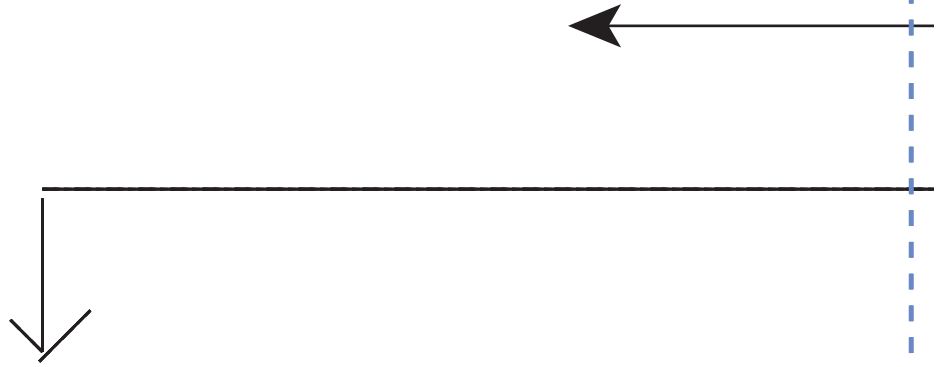
35



36

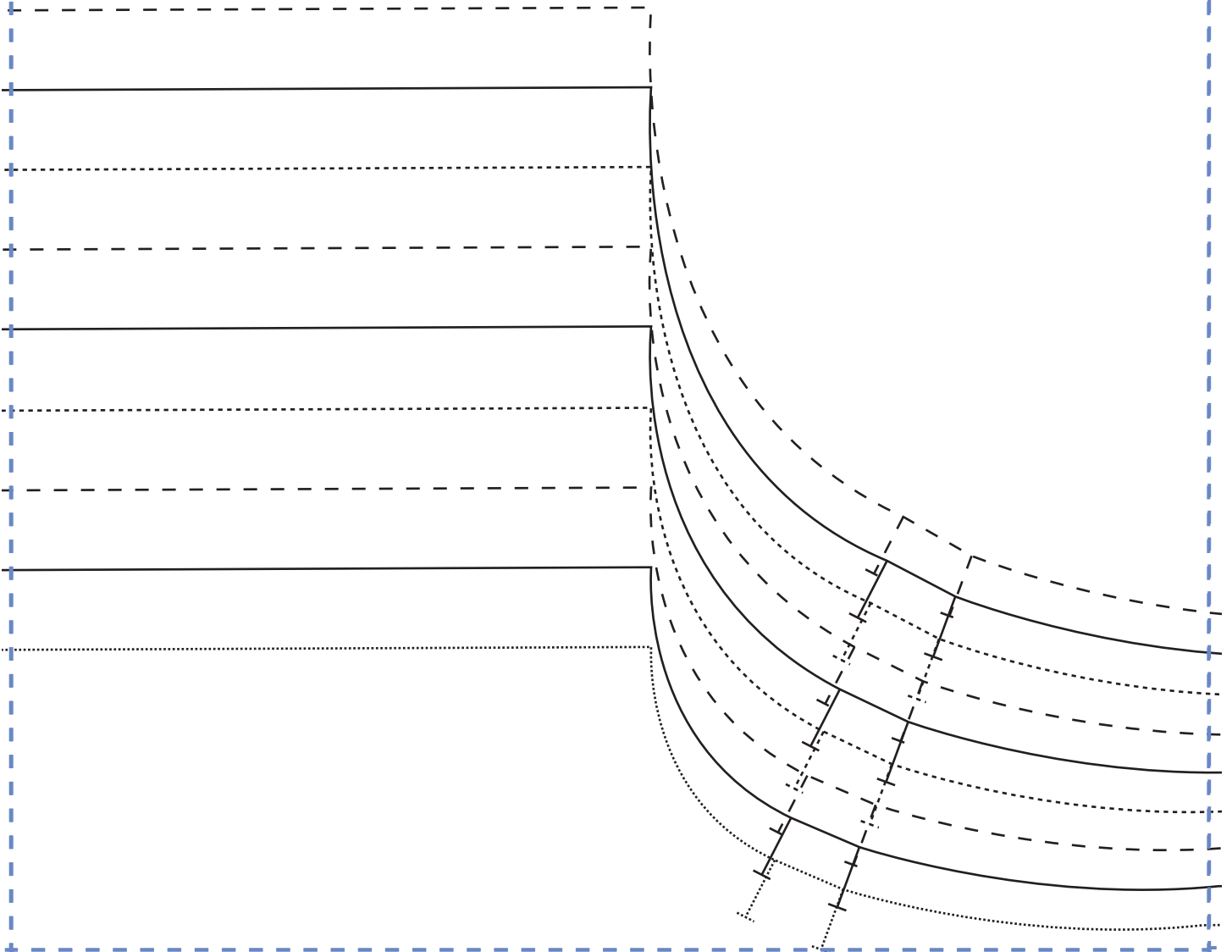
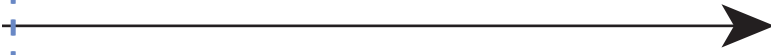
37

38

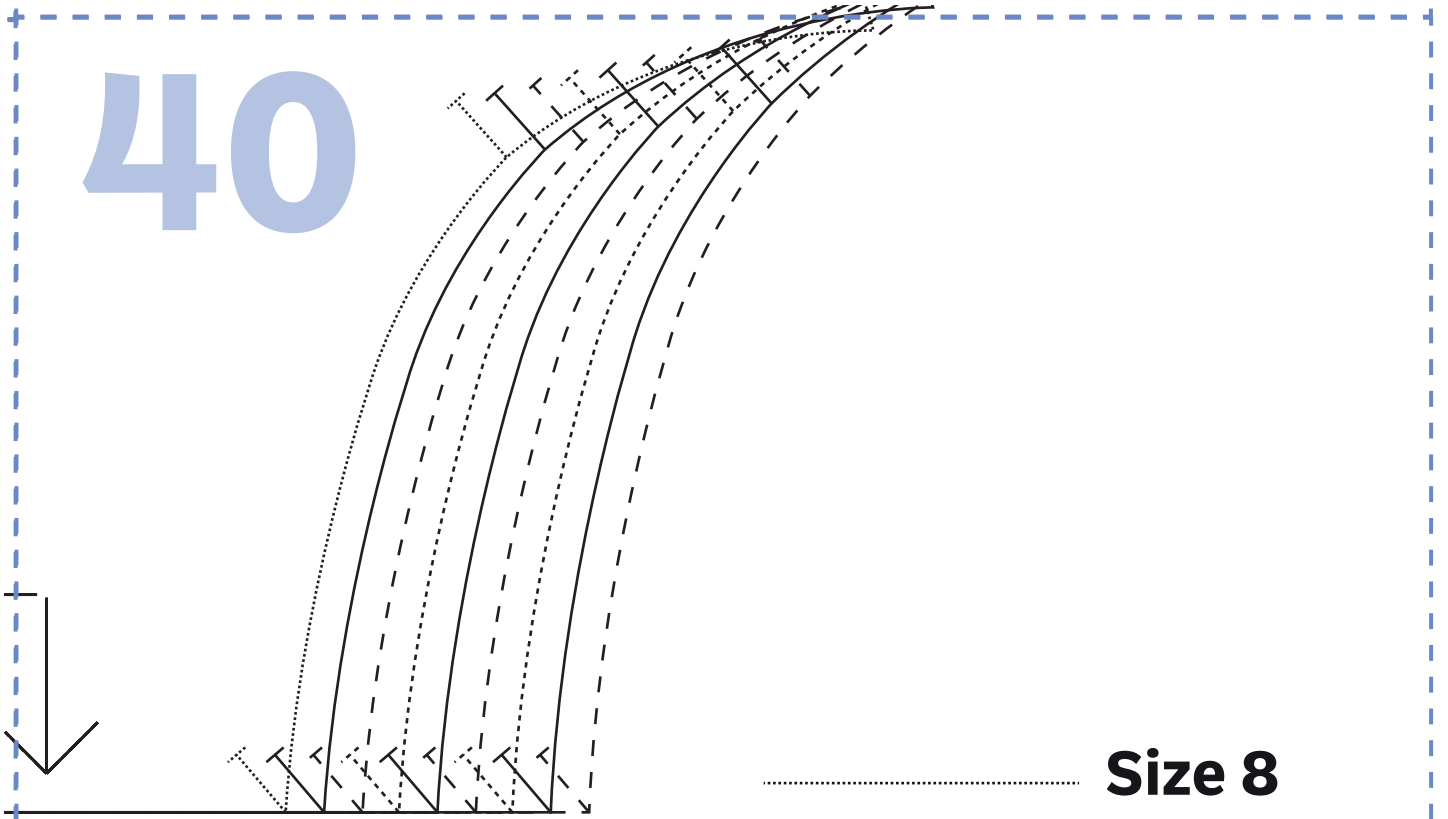


39

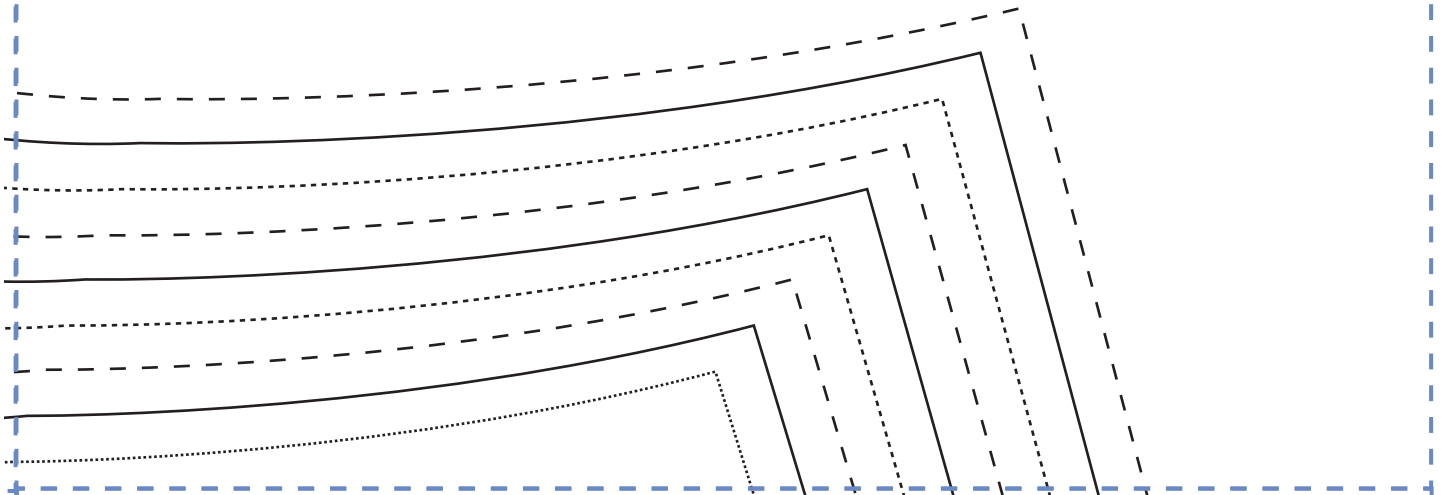
FROM
THE



40



- **Size 8**
- **Size 10**
- - - - **Size 12**
- **Size 14**
- **Size 16**
- - - - **Size 18**
- **Size 20**
- **Size 22**
- - - - **Size 24**



41



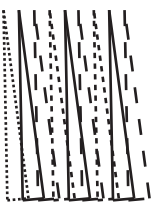
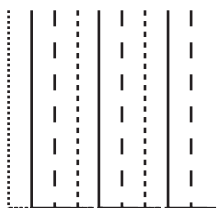
42

43

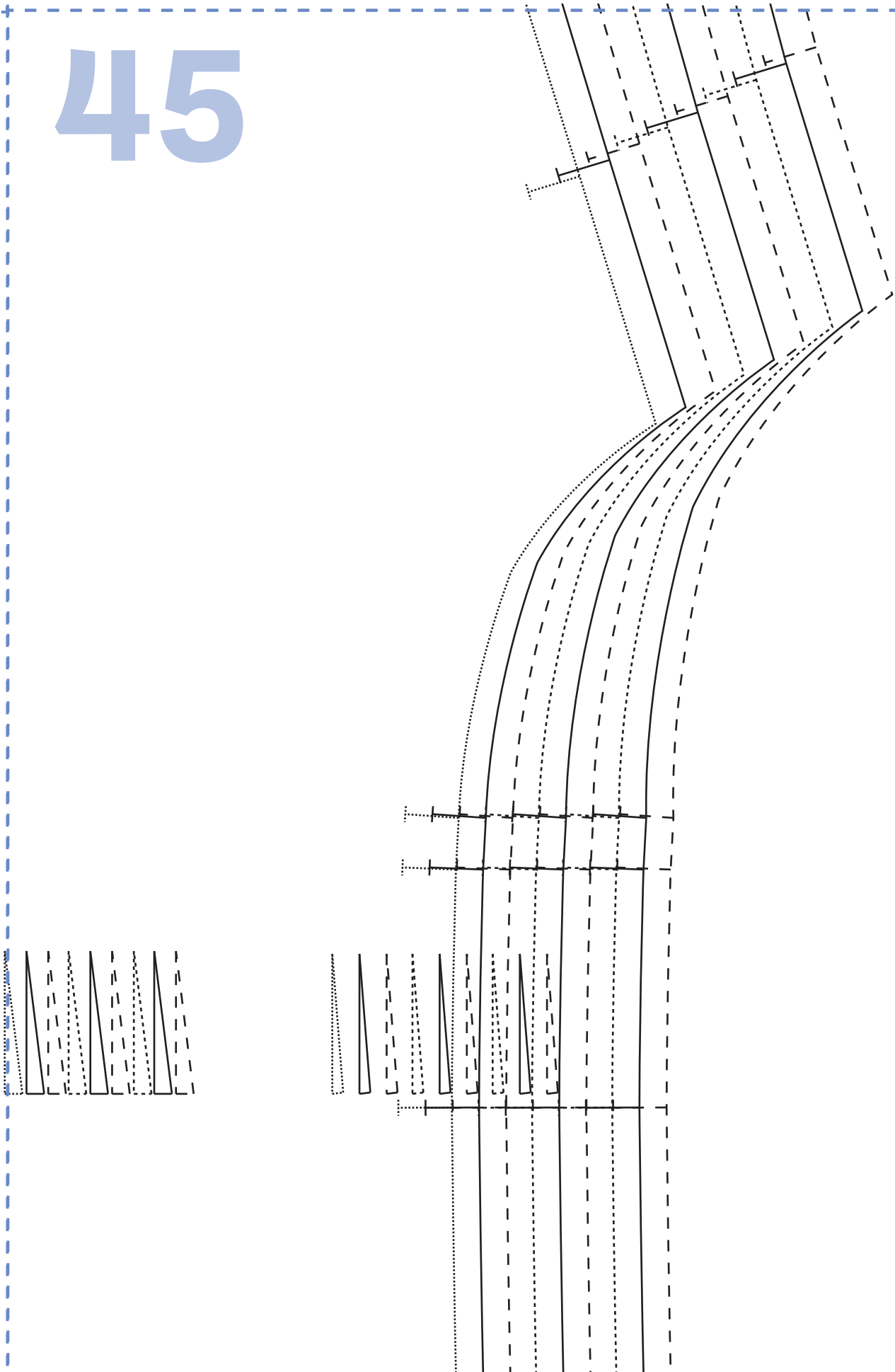


SEW
ARIANA DRESS
BACK BODICE
CUT TWO FROM FABRIC,
AND TWO FROM LINING

44



45



46

I

r

I

I

r

47