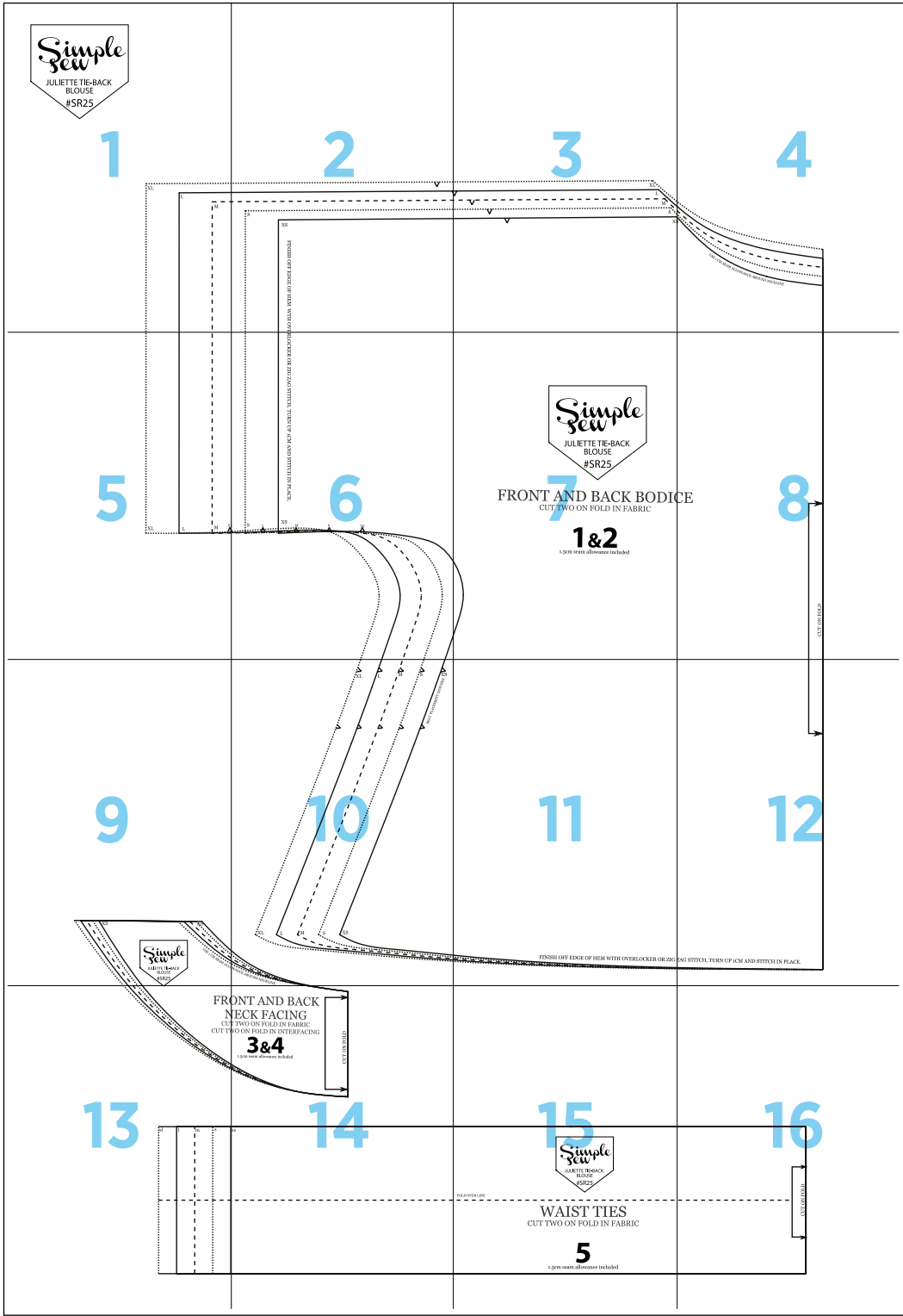


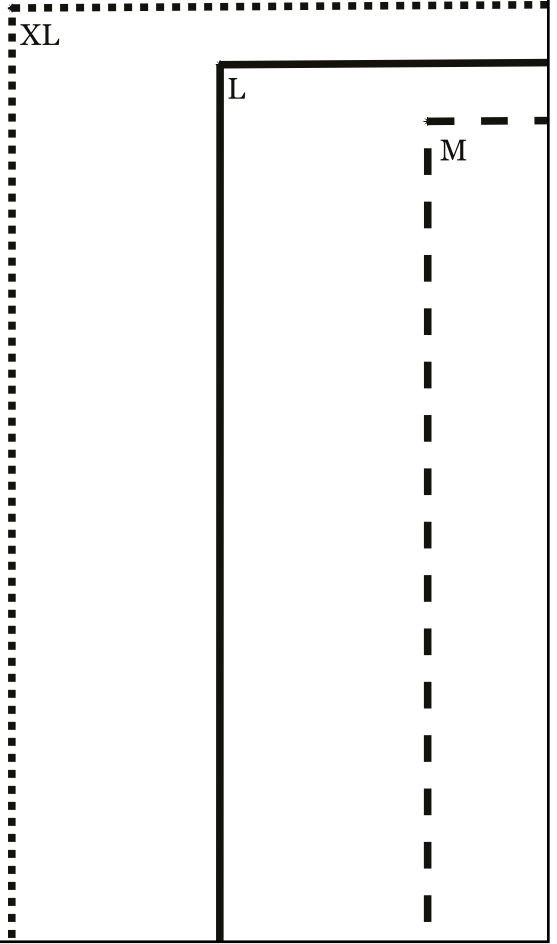
# Juliette Top



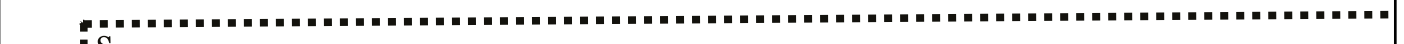
1

*Simple  
sew*

JULIETTE TIE-BACK  
BLOUSE  
#SR25



2

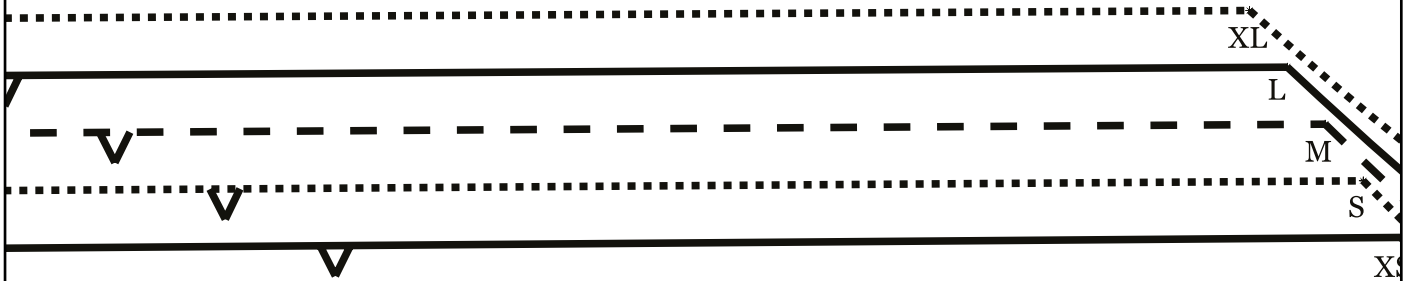


S

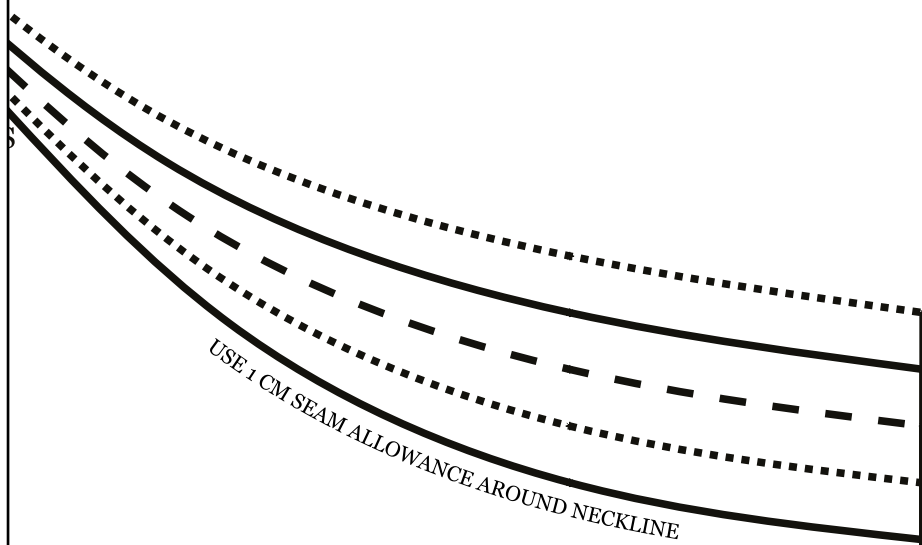
XS

FINISH OFF EDGE OF HEM WITH OVER

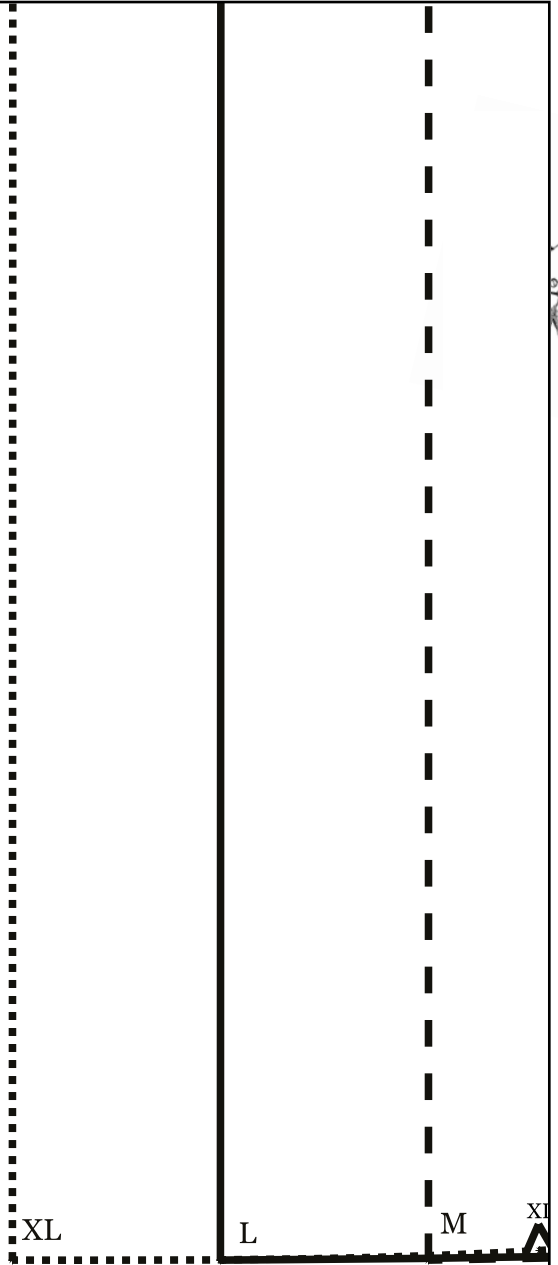
3



4



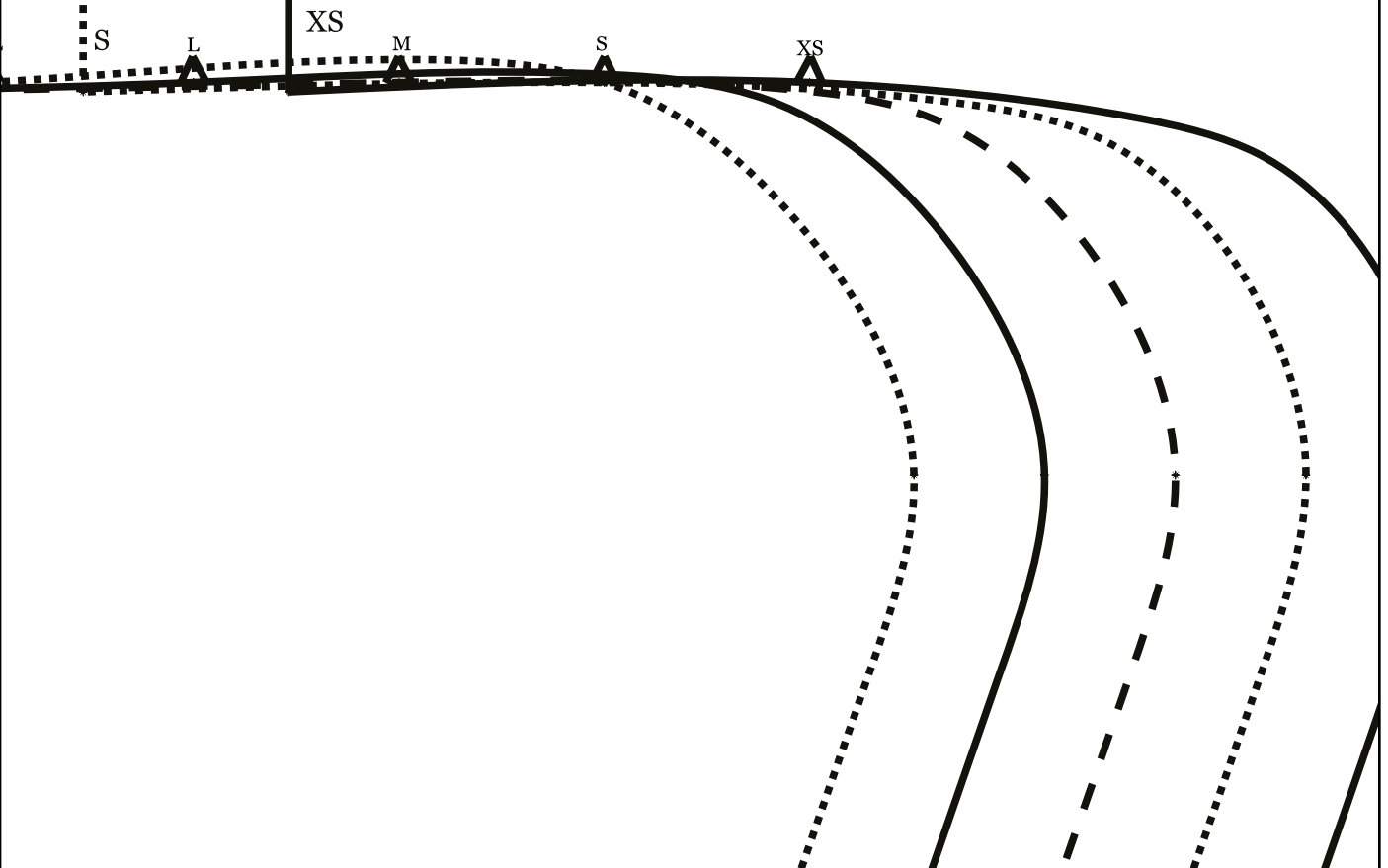
5





ROCKER OR ZIG ZAG STITCH, TURN UP 1CM AND STITCH IN PLACE.

6



7

Simple  
sew

JULIETTE TIE-BACK  
BLOUSE

#SR25

FRONT AND BACK BODICE  
CUT TWO ON FOLD IN FABRIC

**1&2**

1.5cm seam allowance included





8

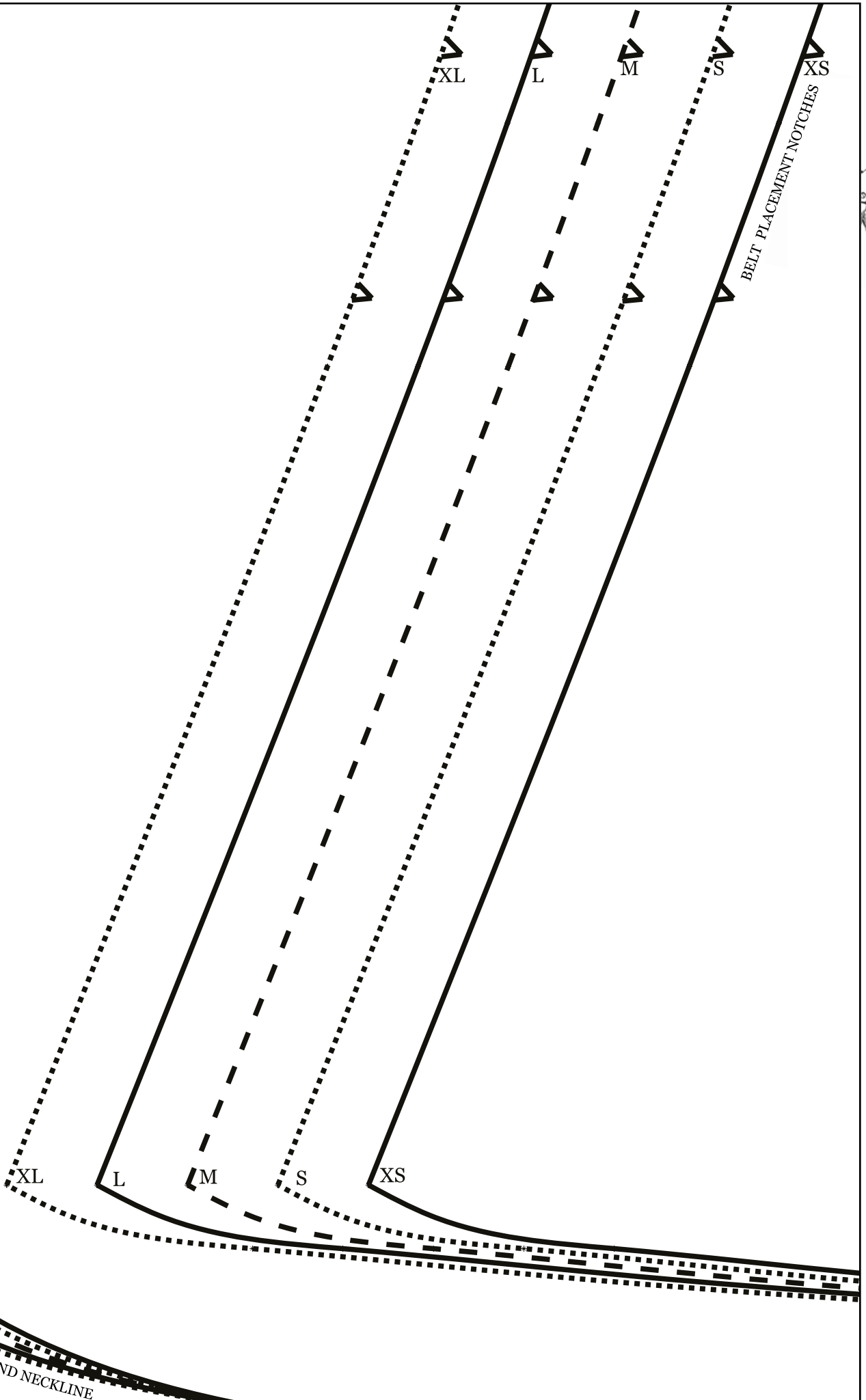
CE



CUT ON FOLD









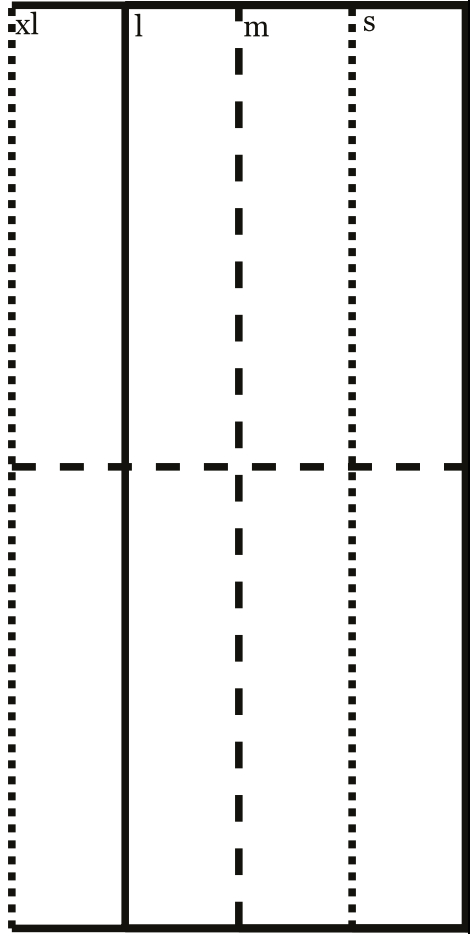
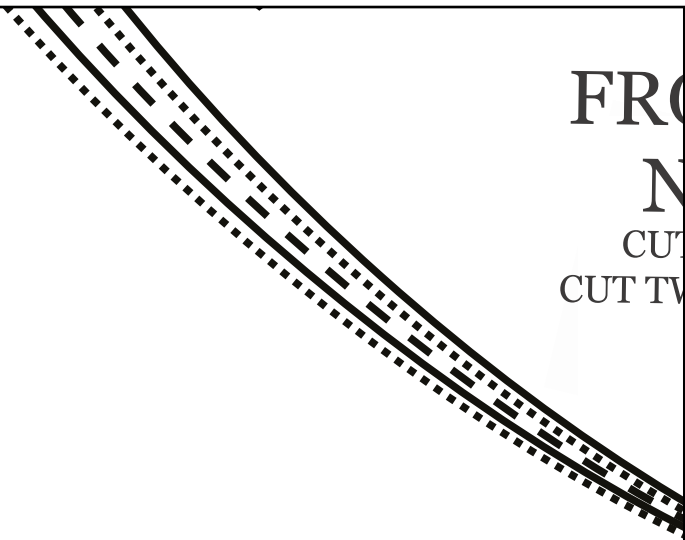
FINISH OFF EDGE OF HEM WITH OVERLOCKER OR ZIG

12



ZAG STITCH, TURN UP 1CM AND STITCH IN PLACE.

FRONT  
NECK  
CUT  
CUT TWICE



# 14 FRONT AND BACK NECK FACING

CUT TWO ON FOLD IN FABRIC  
CUT TWO ON FOLD IN INTERFACING

## 3&4

1.5cm seam allowance included



XS



15



FOLD OVER LINE

---

**WAIST TIES**  
CUT TWO ON FOLD IN FABRIC

**5**

1.5cm seam allowance included



