

sew

ISSUE 171 JANUARY 2023

PATTERN
DOWNLOAD
CUT OUT & KEEP

GERTIE DRESS

Designer: Gretchen Hirsch

Magazine page: 22



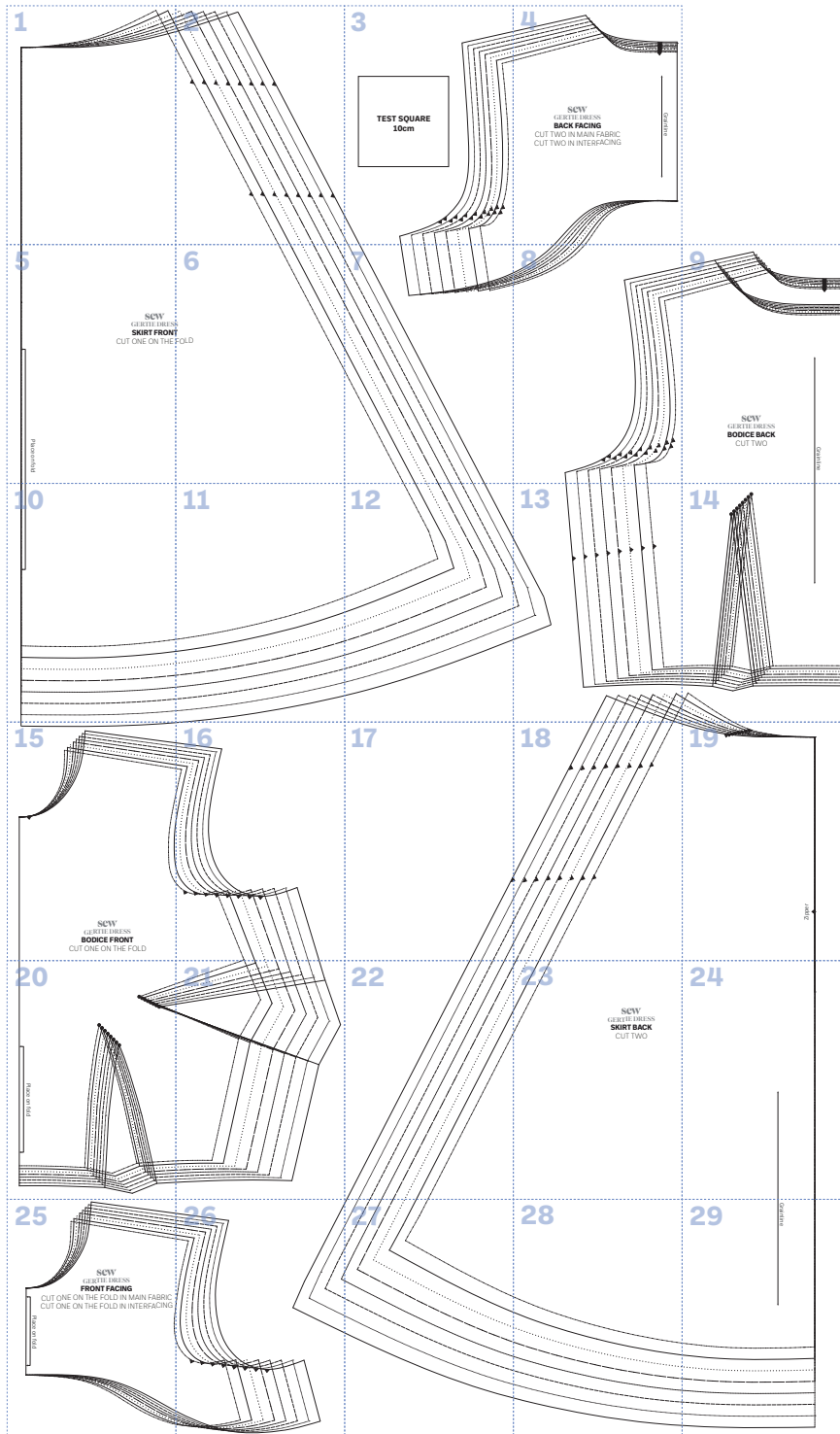
IN YOUR PRINT MENU, UNDER SIZE OPTIONS, BE SURE TO
SELECT '**ACTUAL SIZE/100%**', INSTEAD OF 'FIT TO PAGE'

© DC THOMSON & CO LTD | SEWMAG.CO.UK

All projects, templates and patterns are for personal home use only and cannot be sold or used for commercial purposes.

sew
sewmag.co.uk

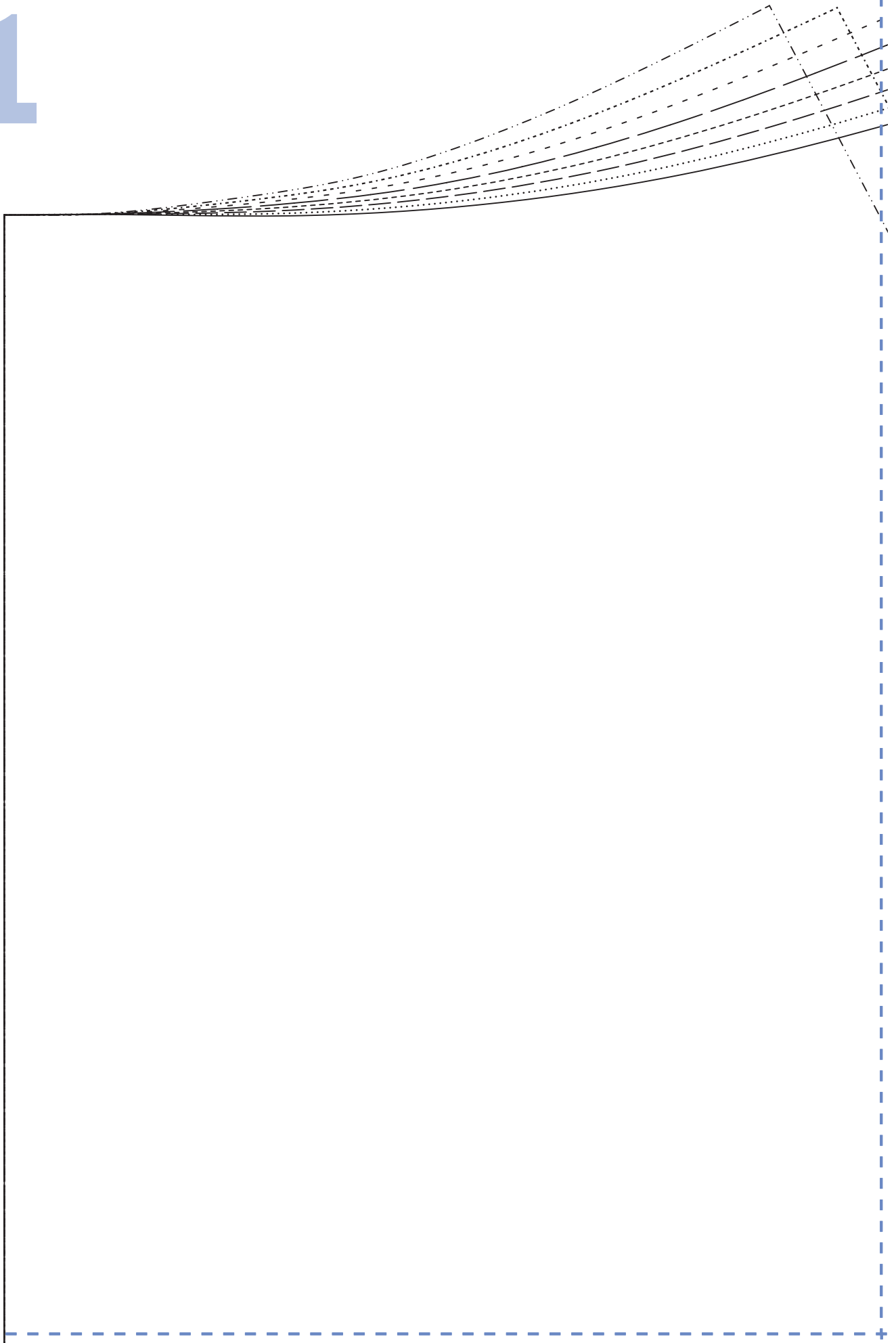
PATTERN LAYOUT

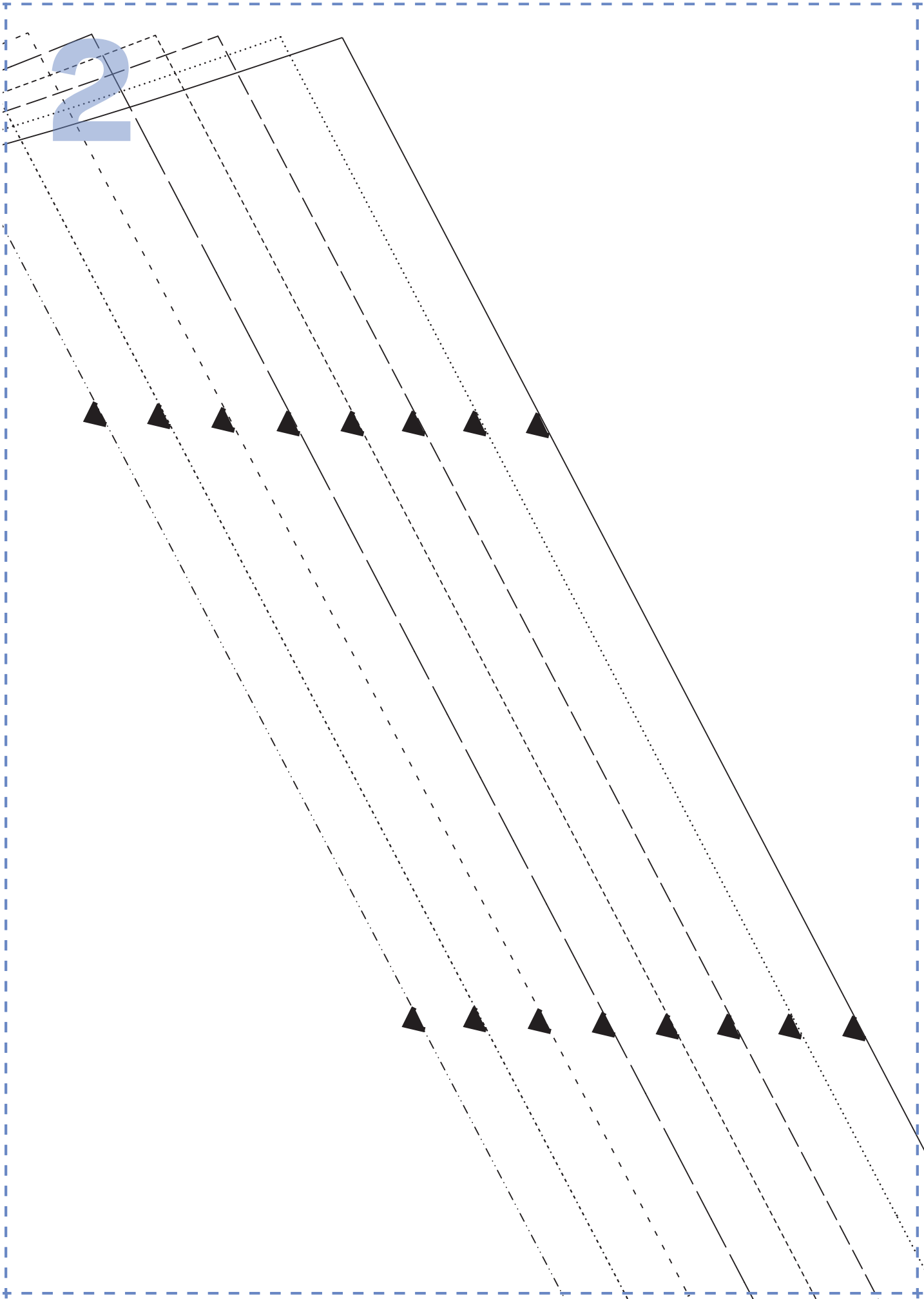


YOUR SIZING CHART

	8	10	12	14	16	18	20
Bust cm	78	83	88	93	98	103	108
Waist cm	59	64	69	74	79	84	89
Hip cm	85	88	93	98	103	108	113
Back neck to waist	39	40	41	42	43	44	45

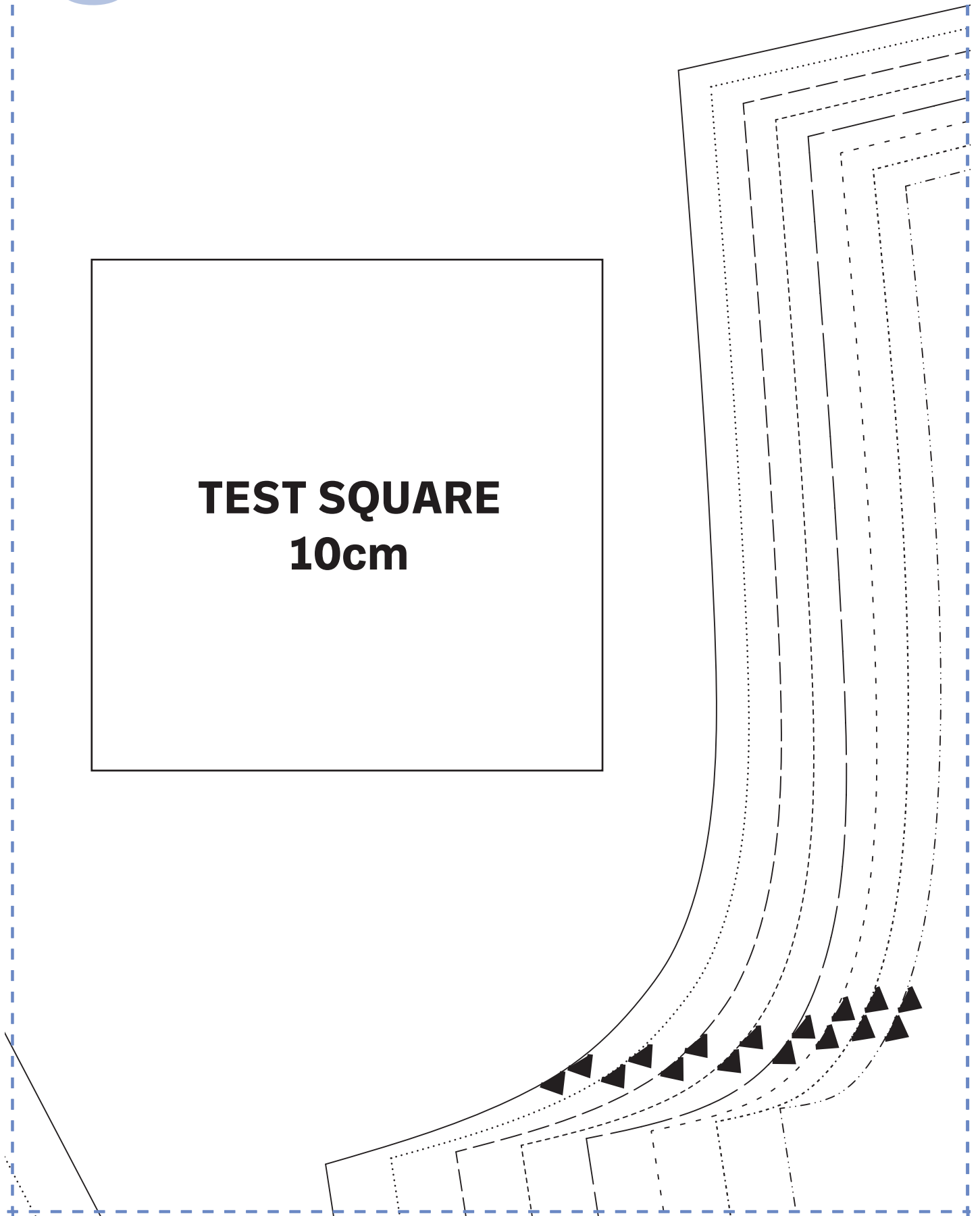
1



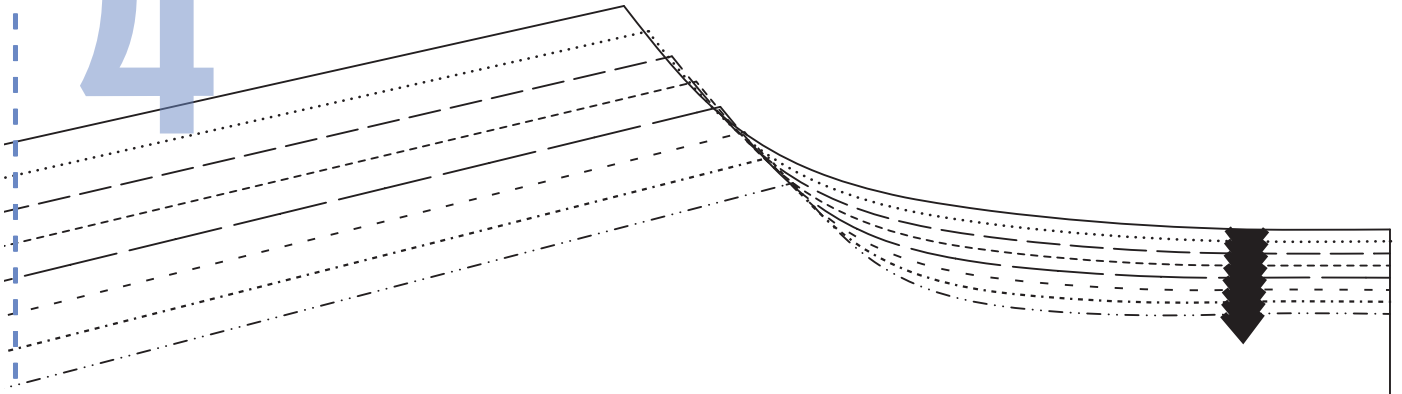


3

TEST SQUARE
10cm



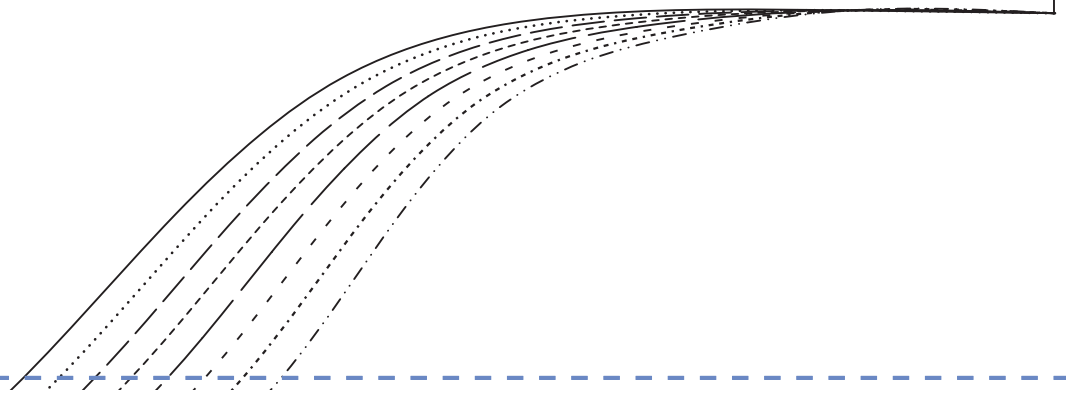
4



sew
GERTIE DRESS
BACK FACING

CUT TWO IN MAIN FABRIC
CUT TWO IN INTERFACING

Grainline



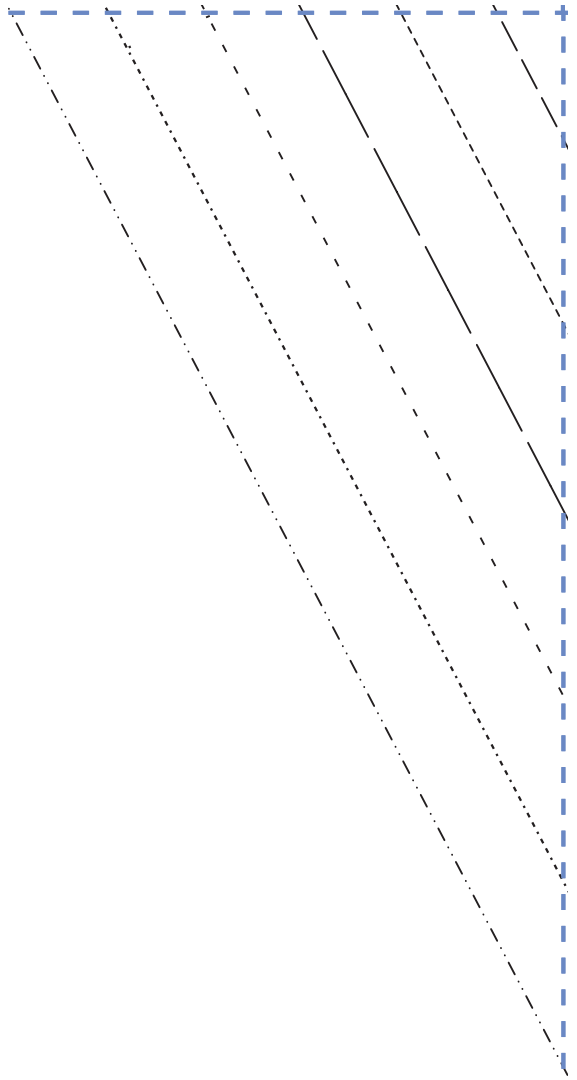
5

sew
GERTIE DRESS
SKIRT FRONT
CUT ONE ON THE FOLD

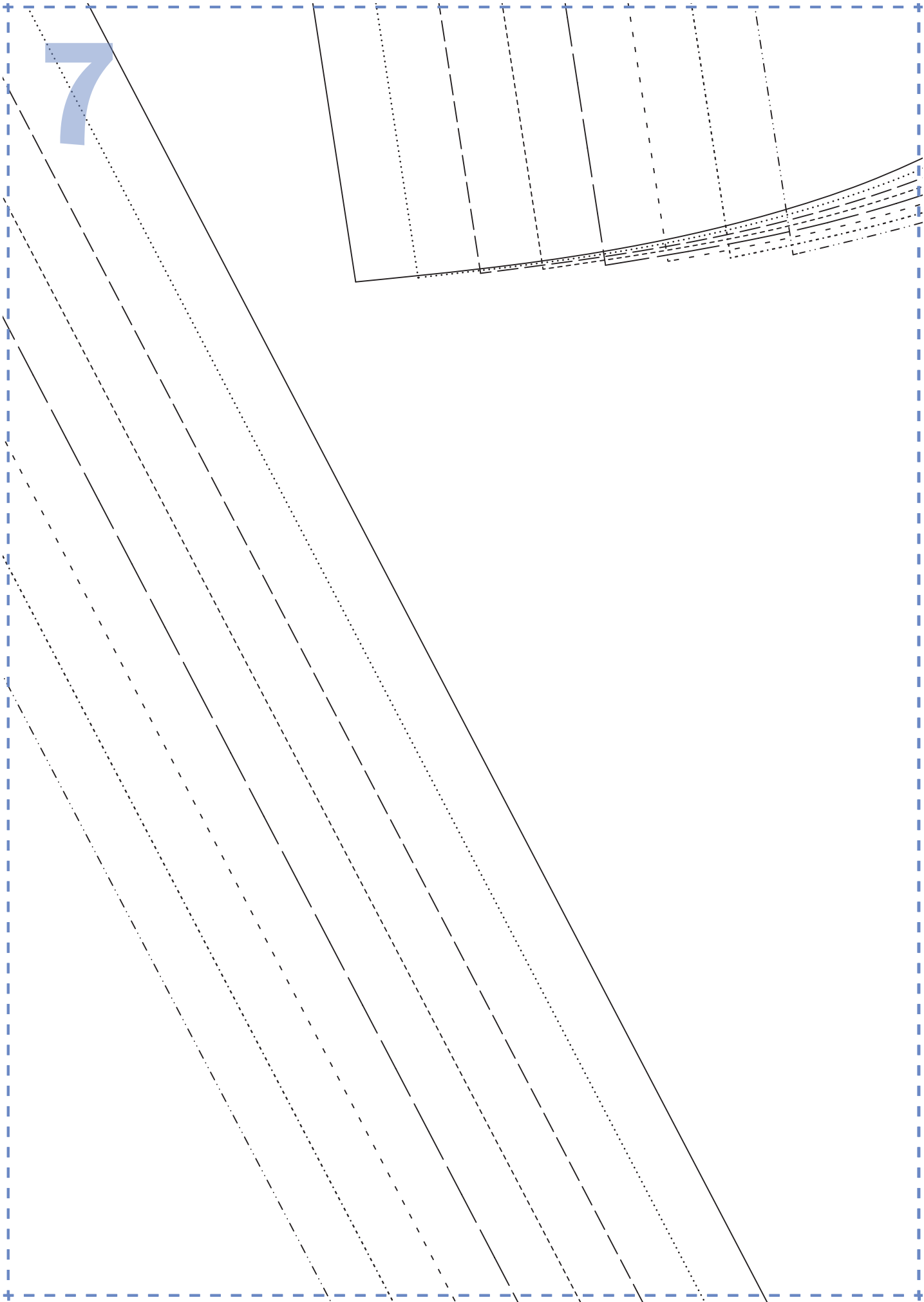
Place on fold

6

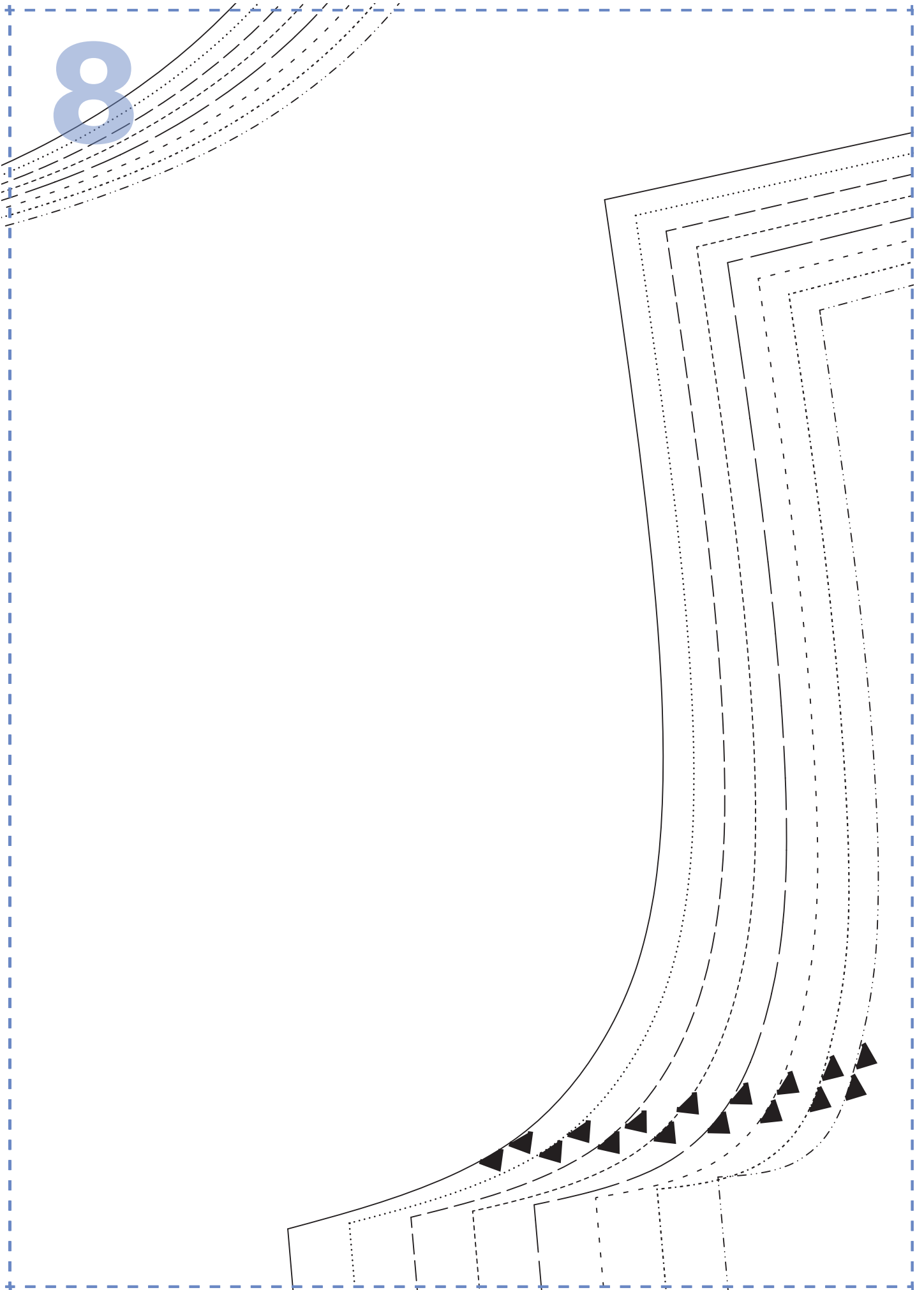
S
T
FOLD



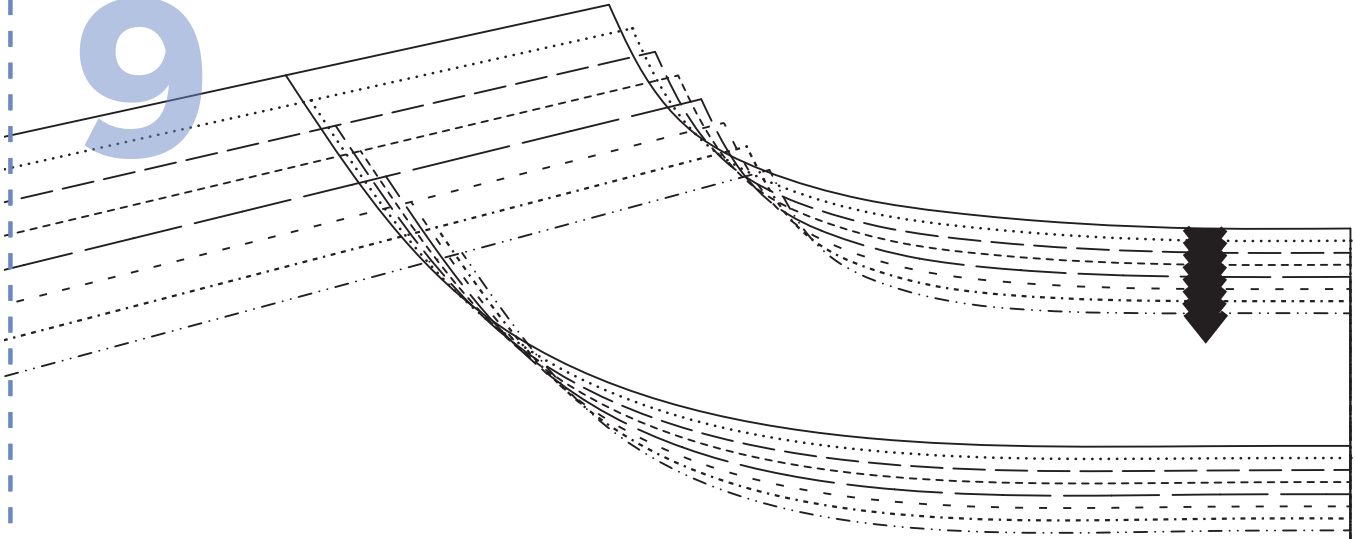
7



8



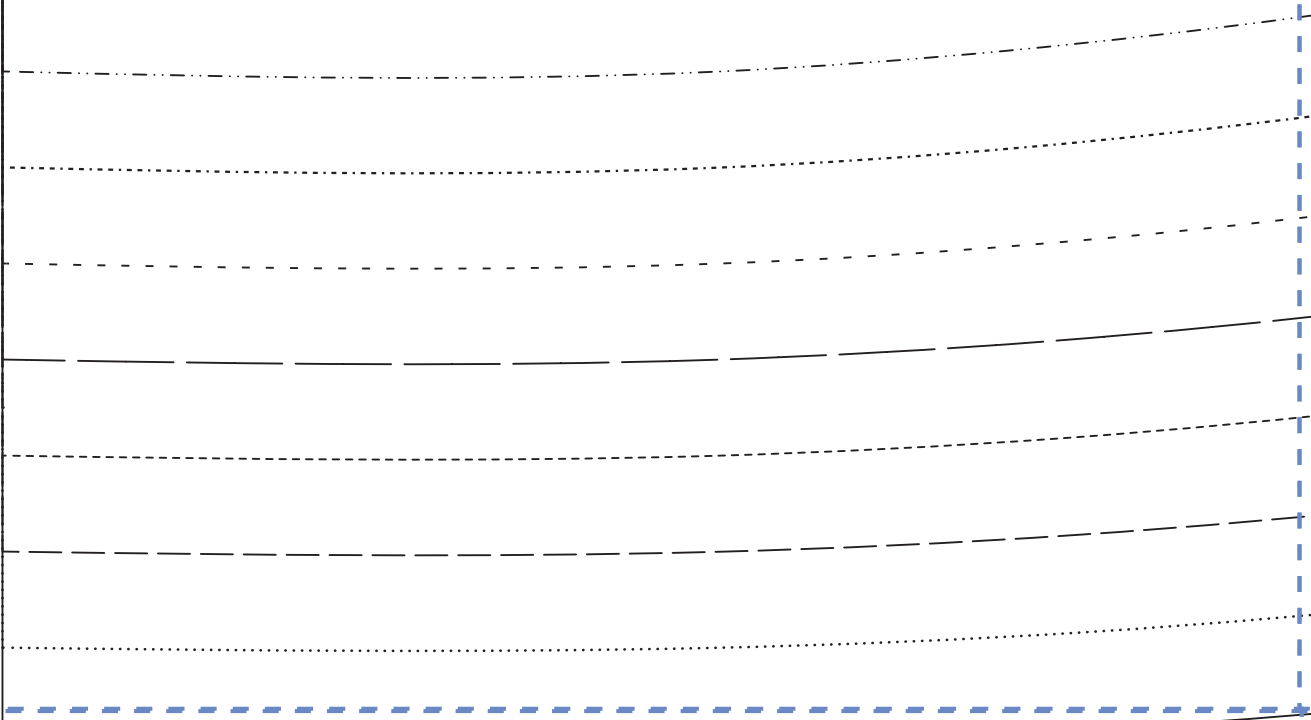
9



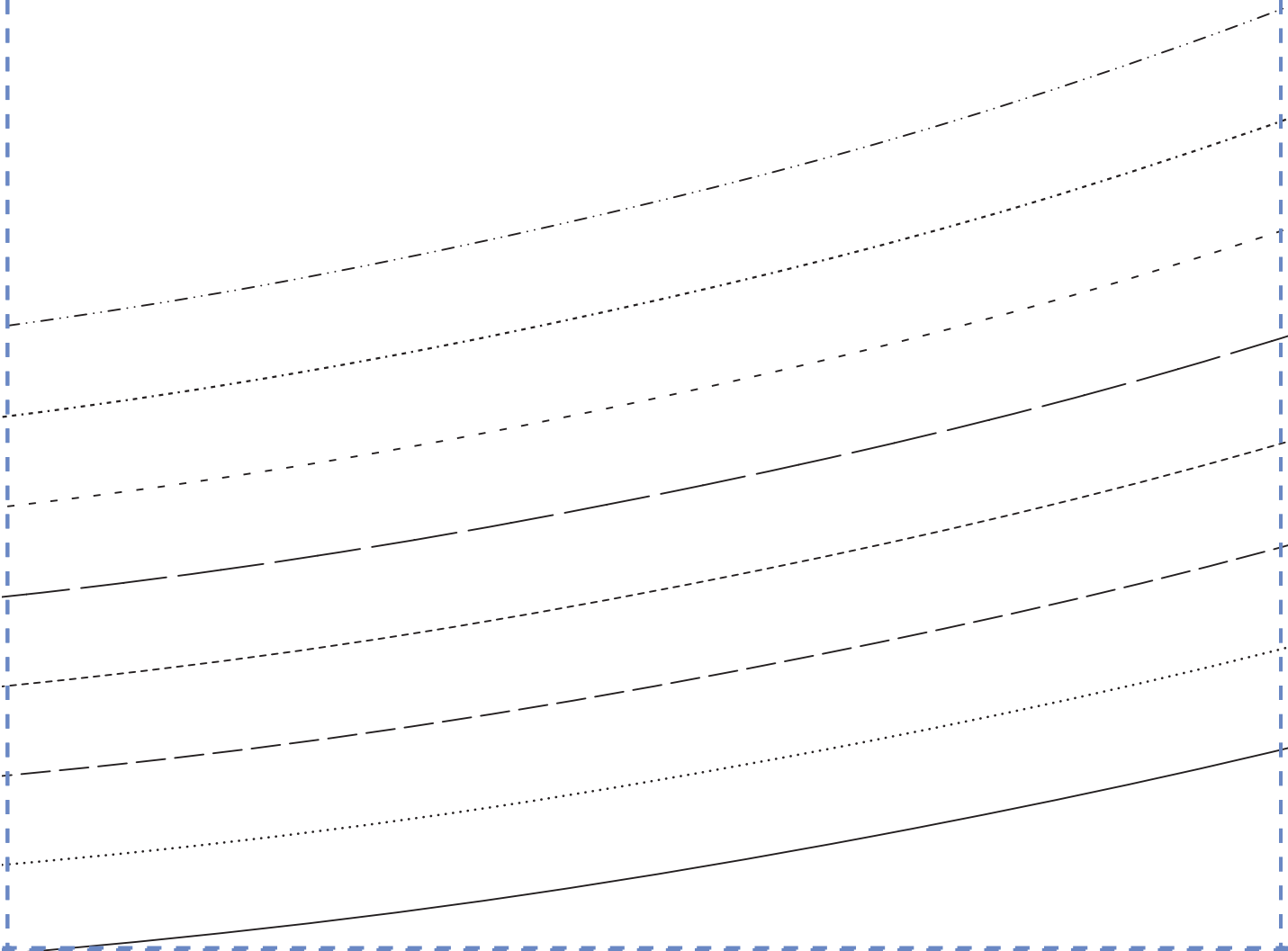
sew
GERTIE DRESS
BODICE BACK
CUT TWO

↑
Grainline

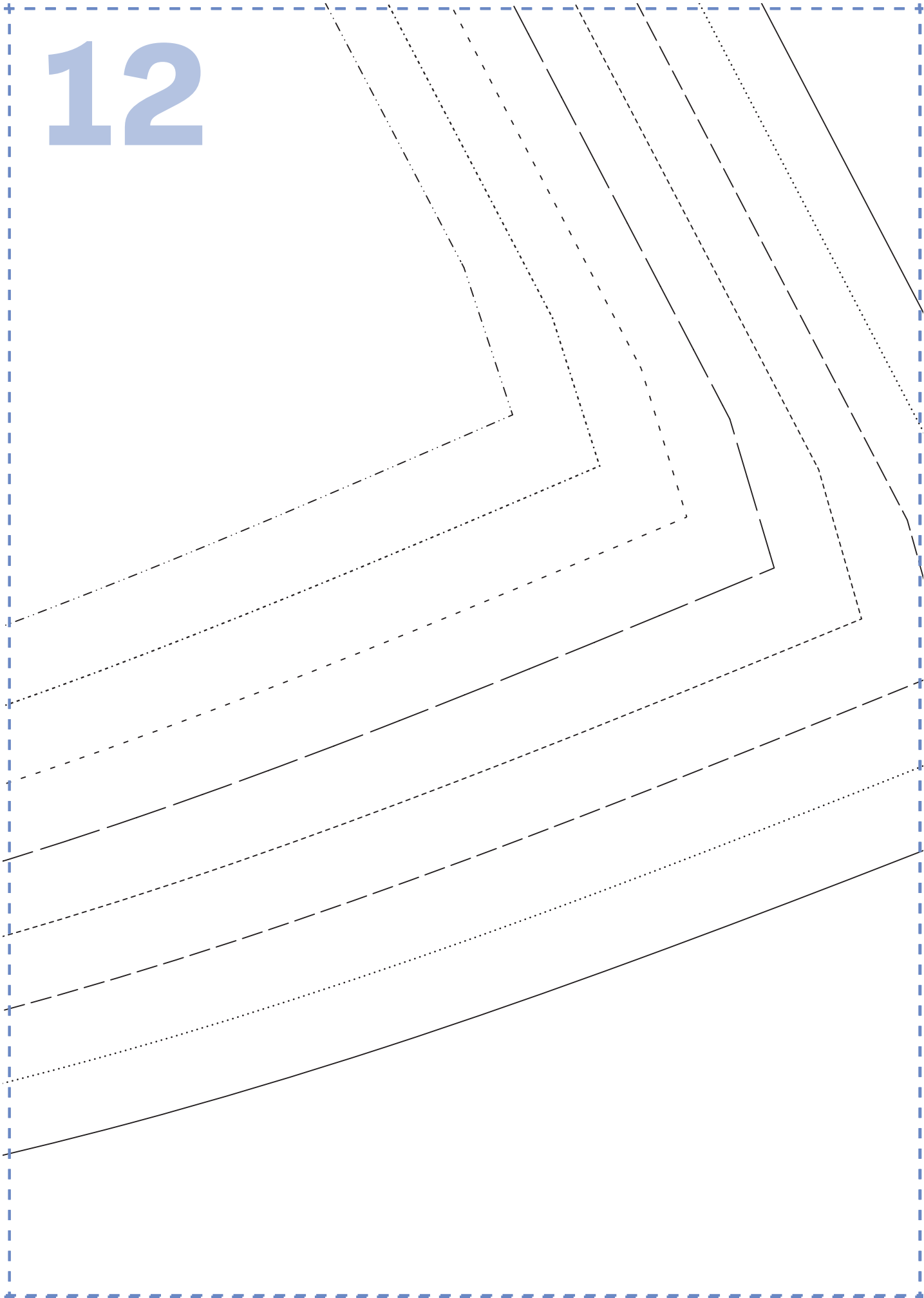
10



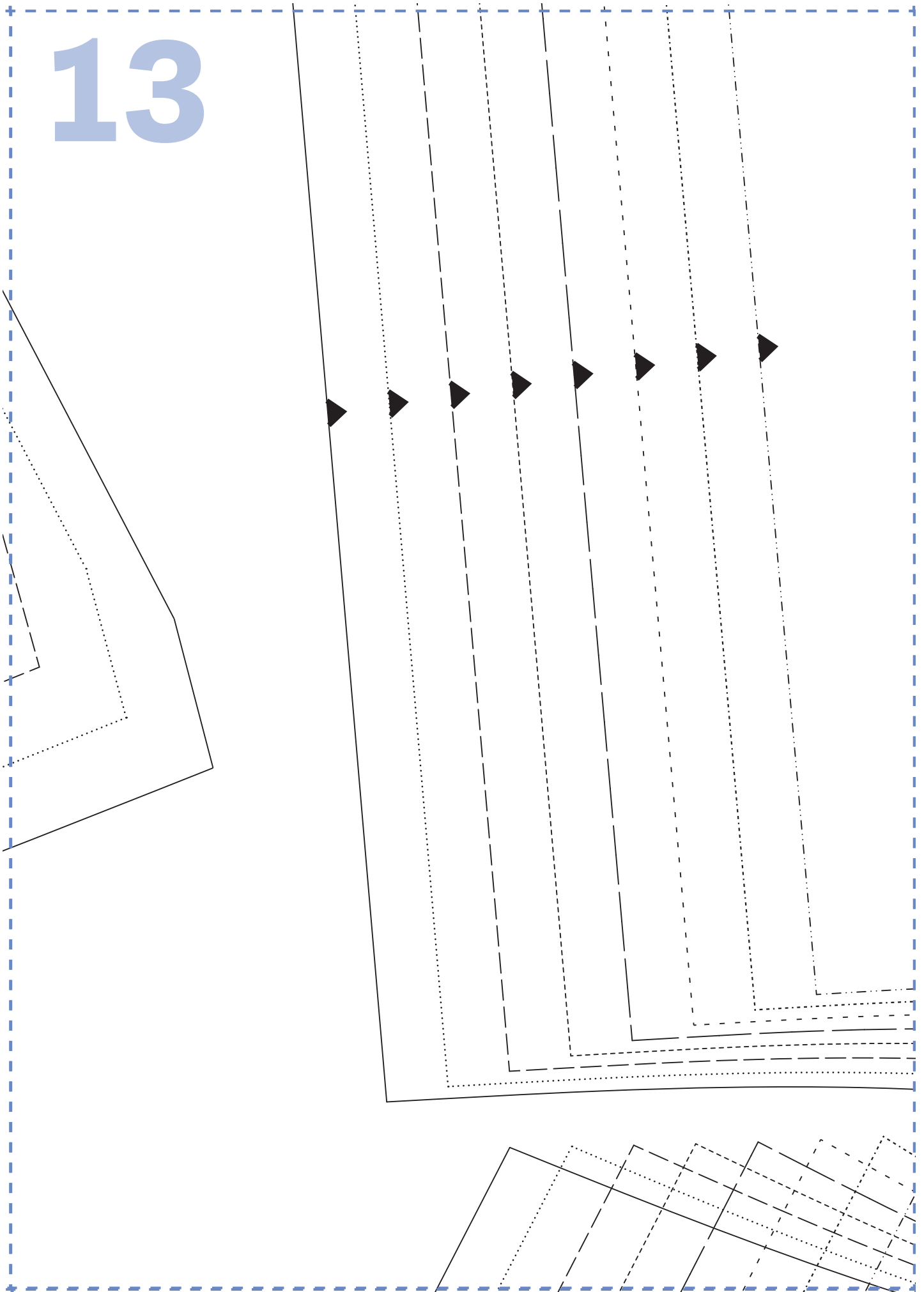
11



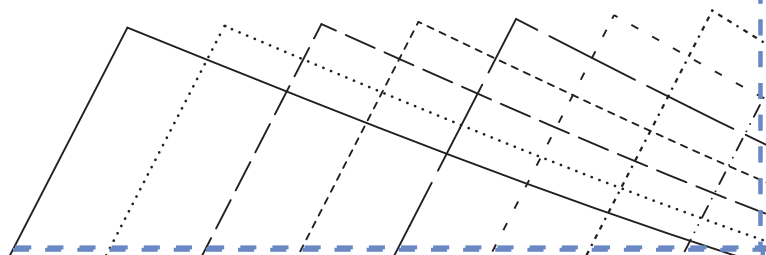
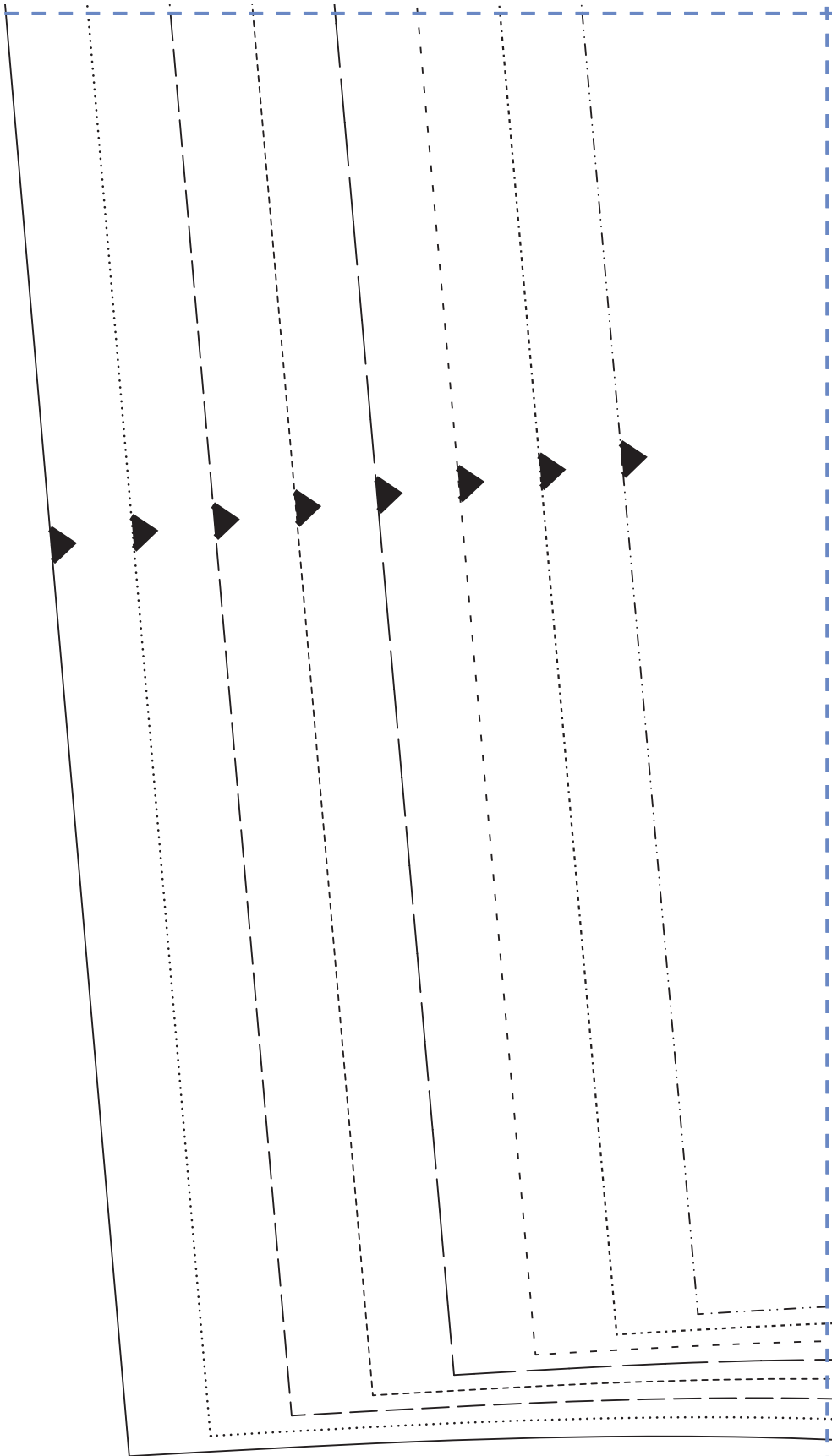
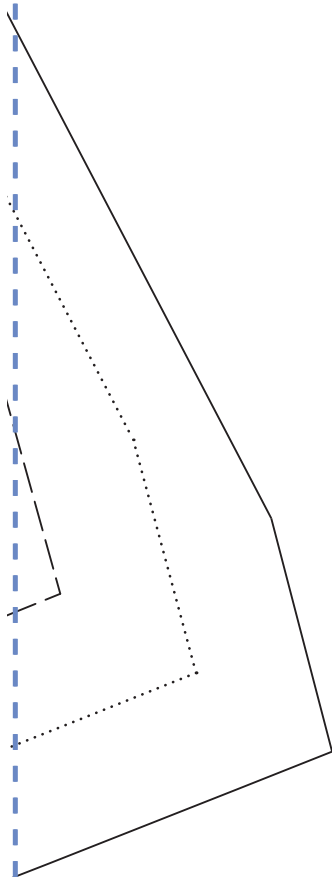
12



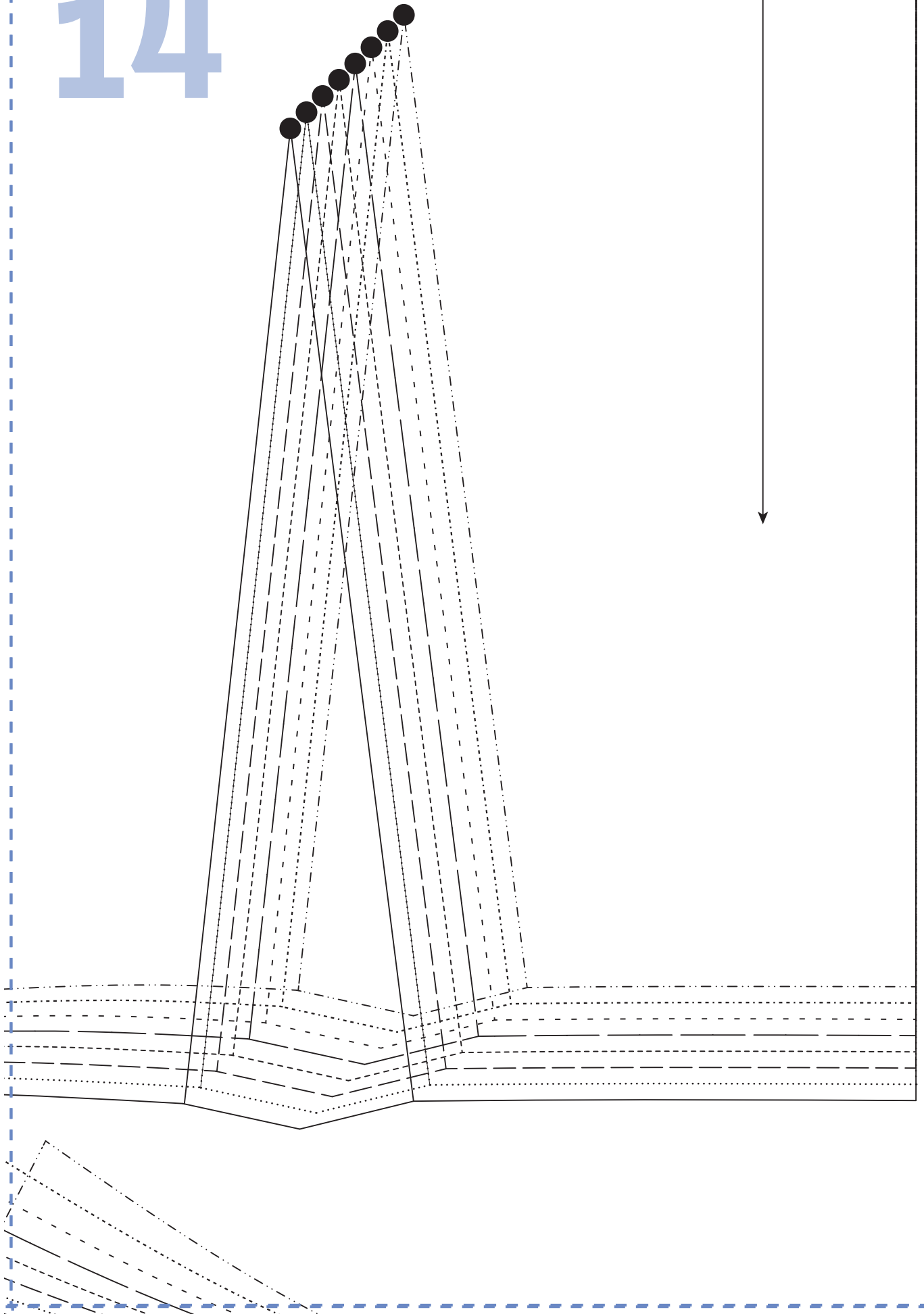
13



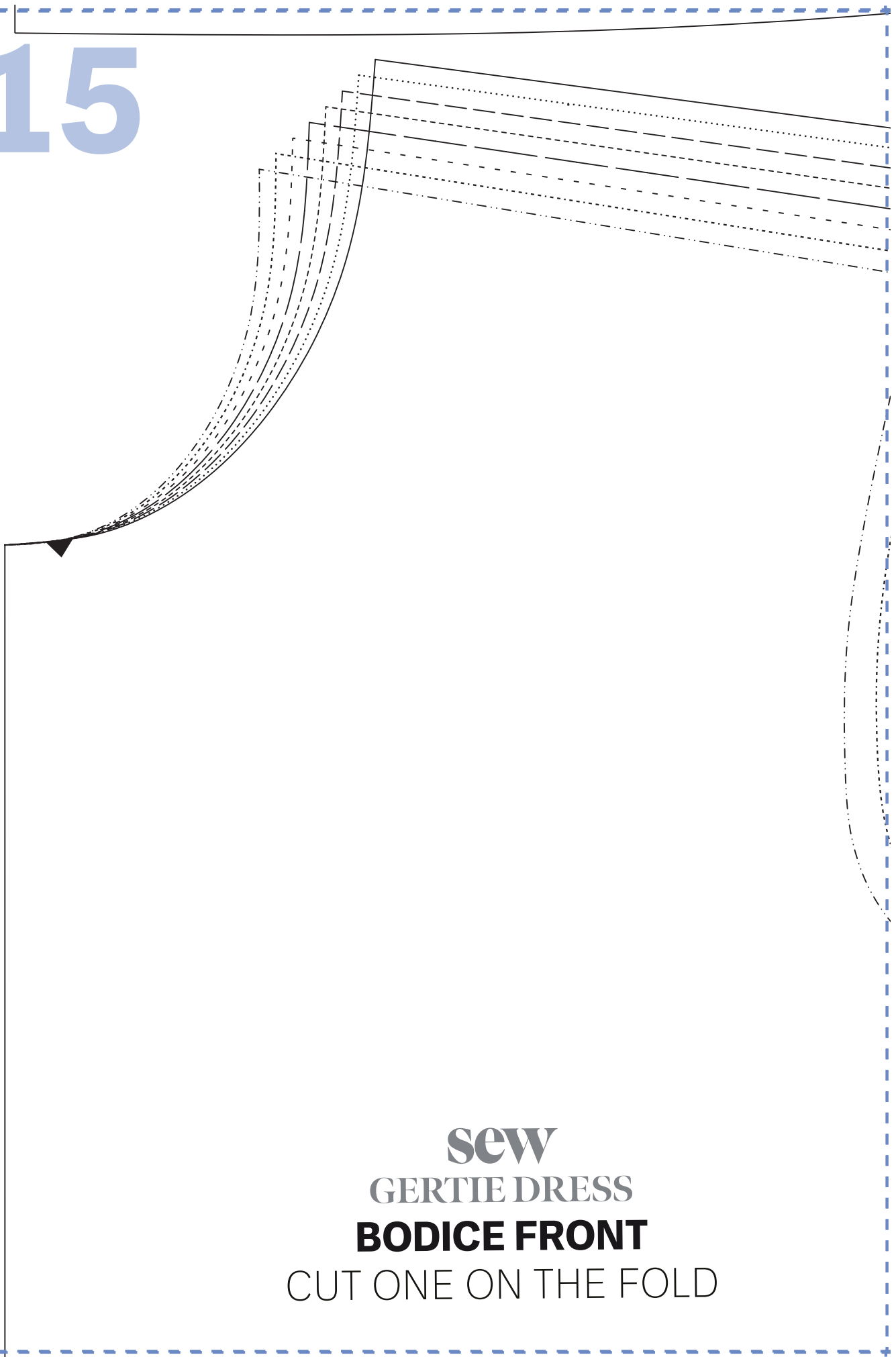
13



14

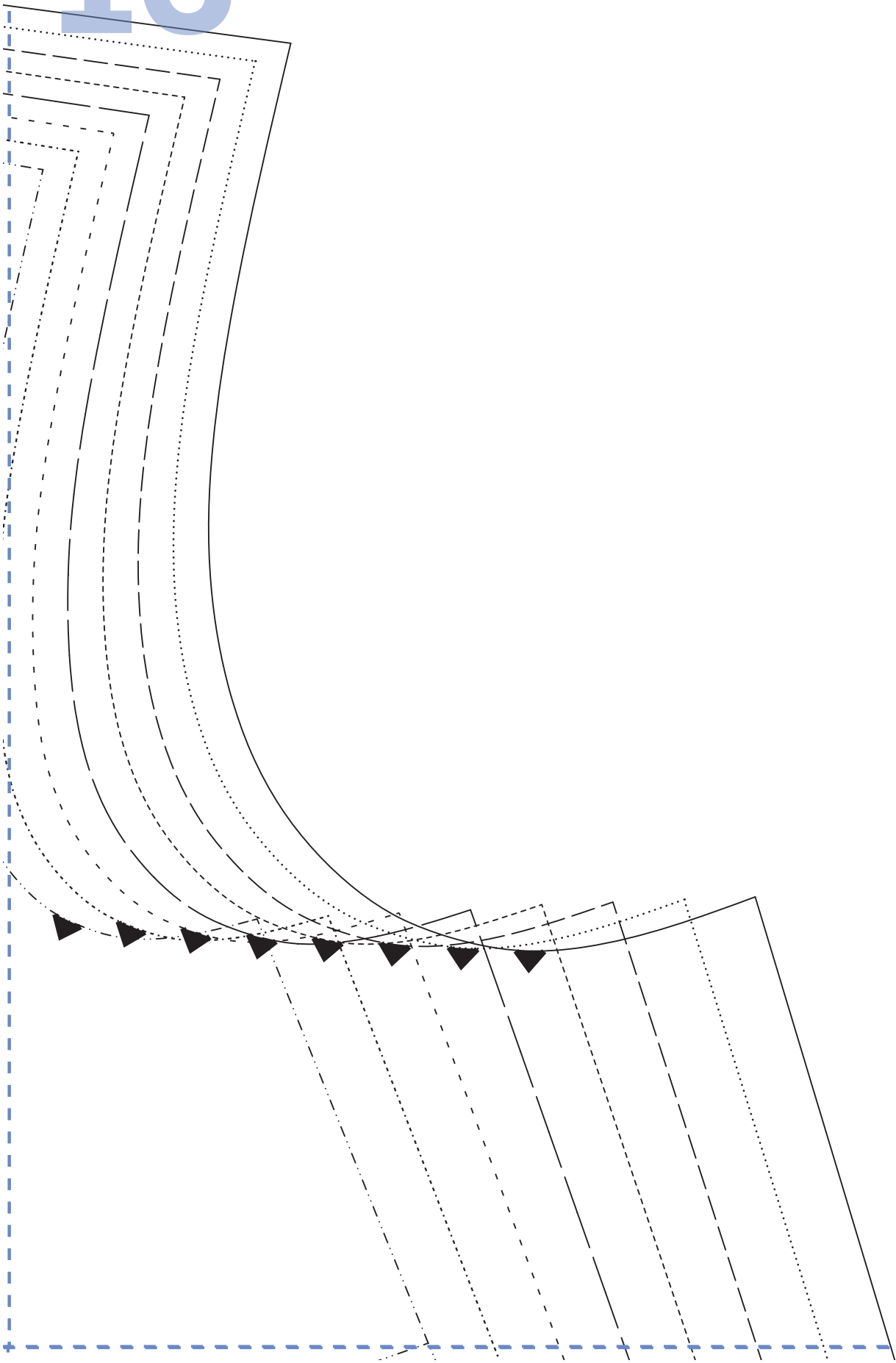


15

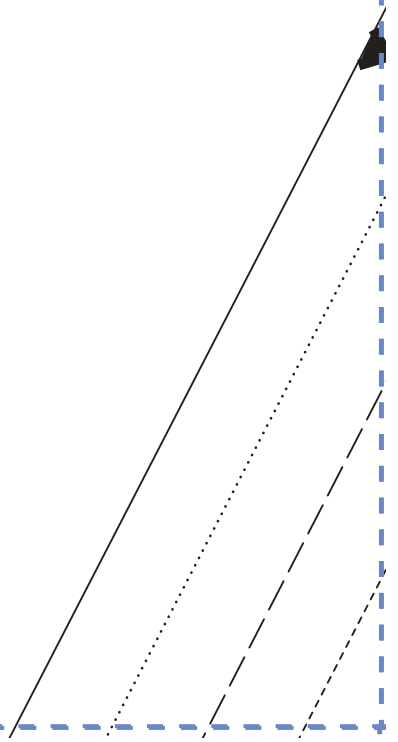


sew
GERTIE DRESS
BODICE FRONT
CUT ONE ON THE FOLD

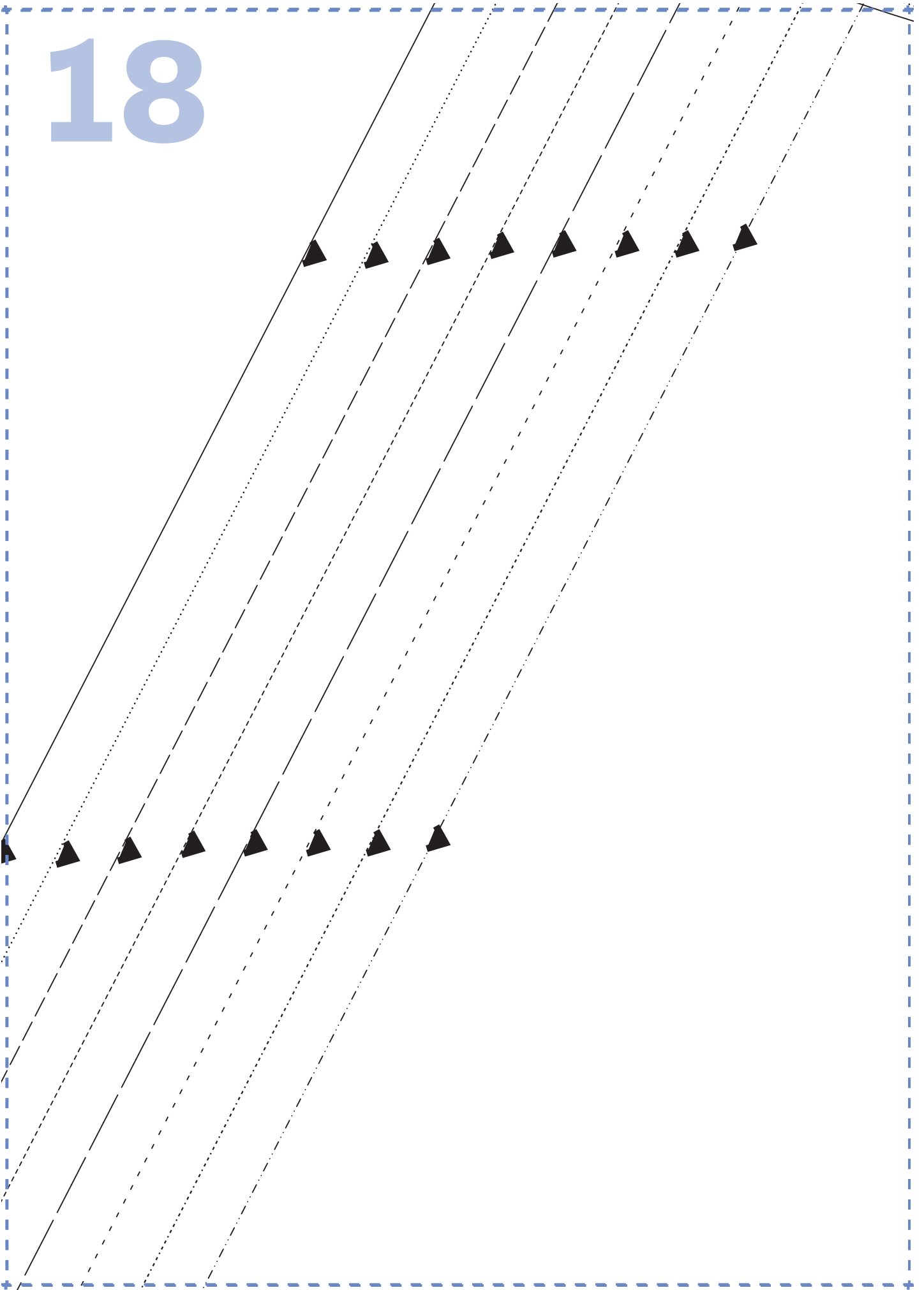
16



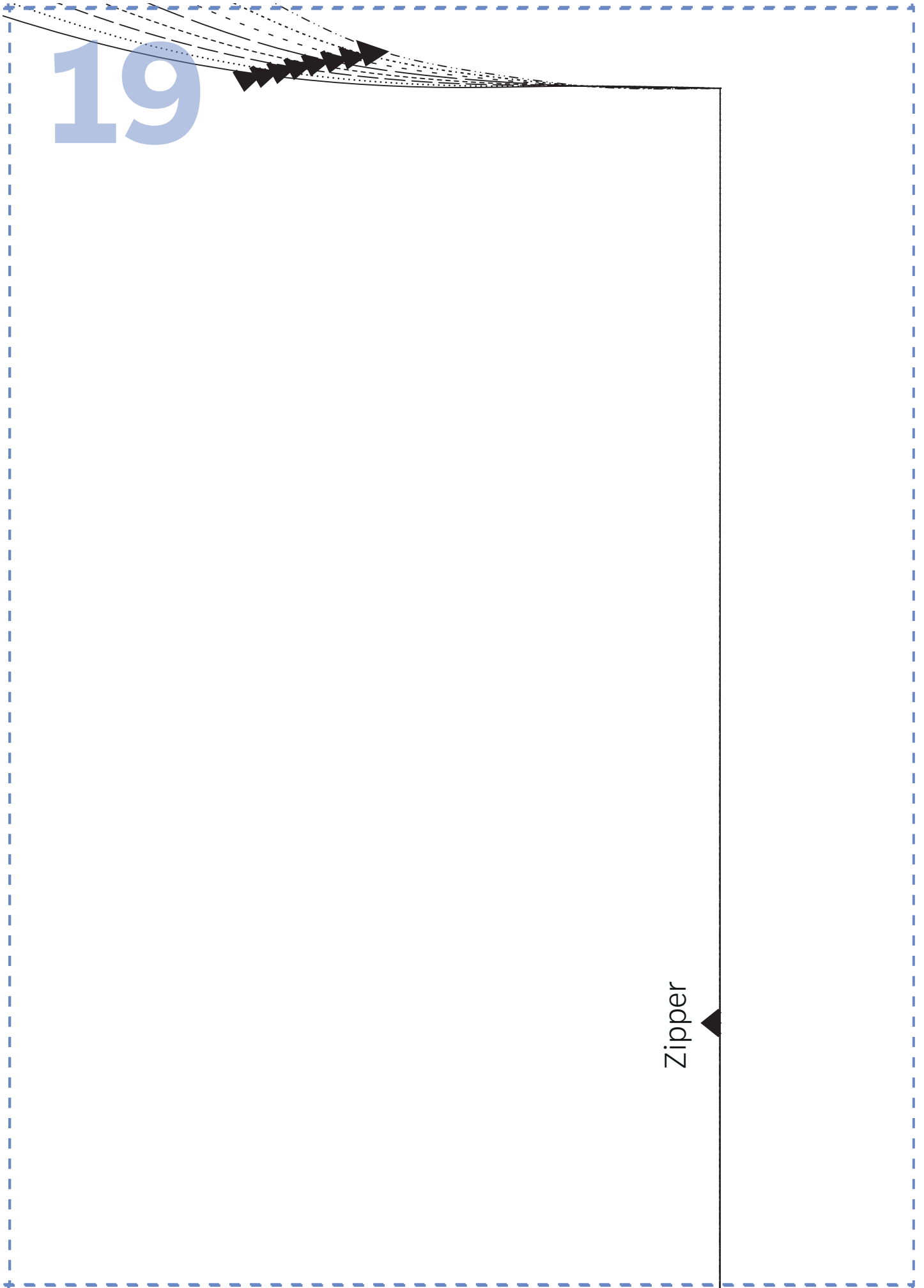
17



18



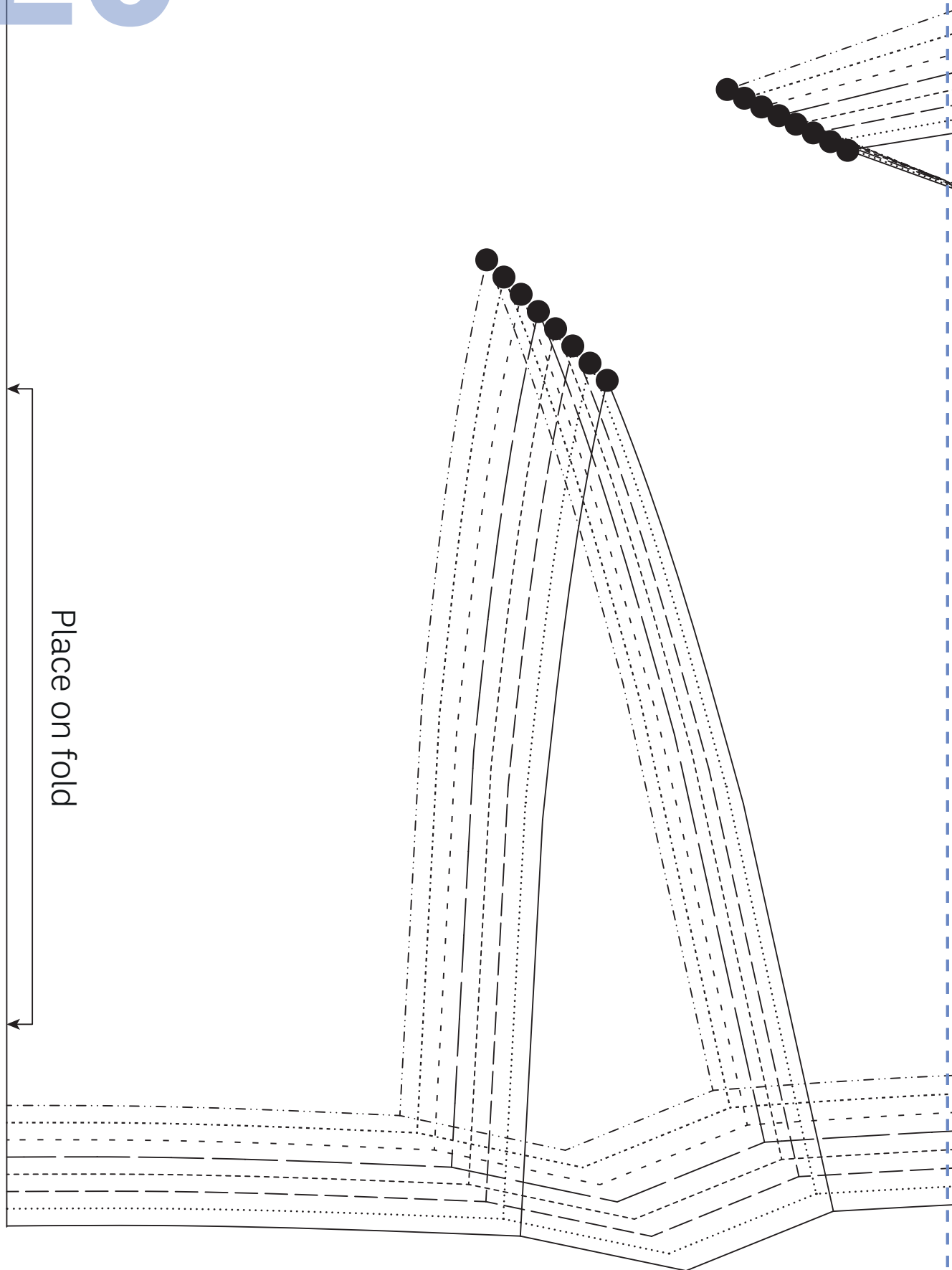
19



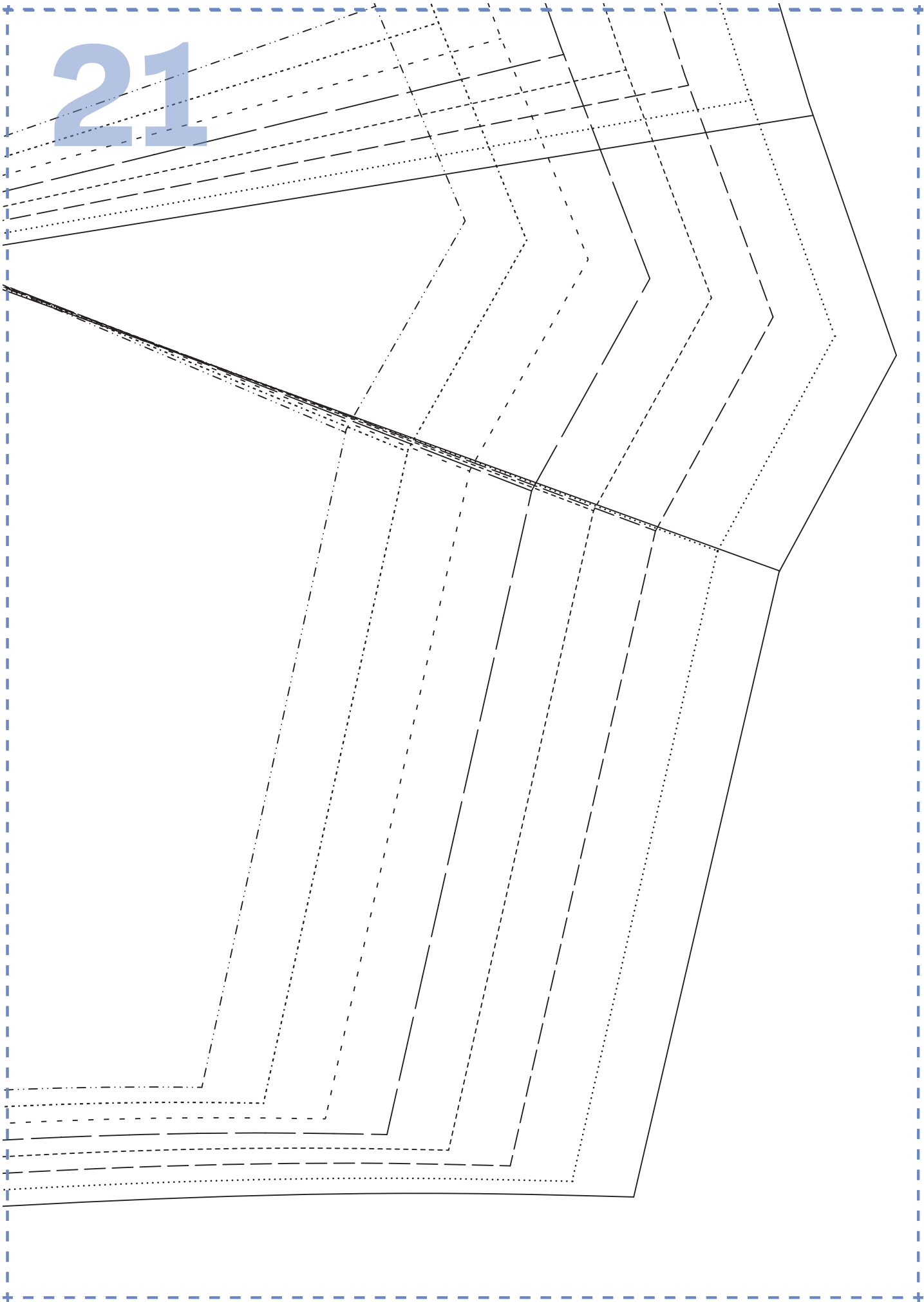
Zipper

20

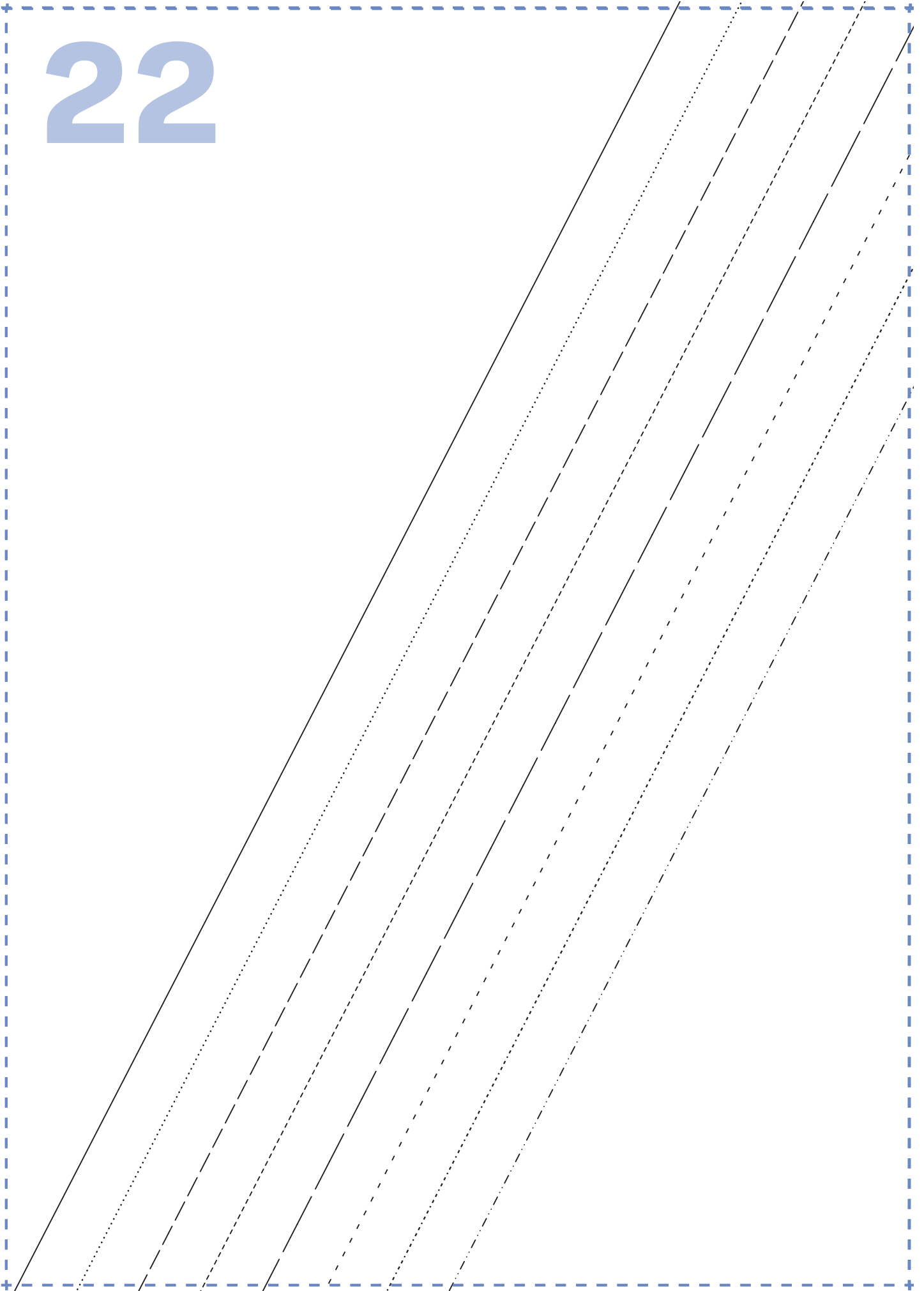
Place on fold



21



22



23

sew
GERTIE DRESS
SKIRT BACK
CUT TWO

24



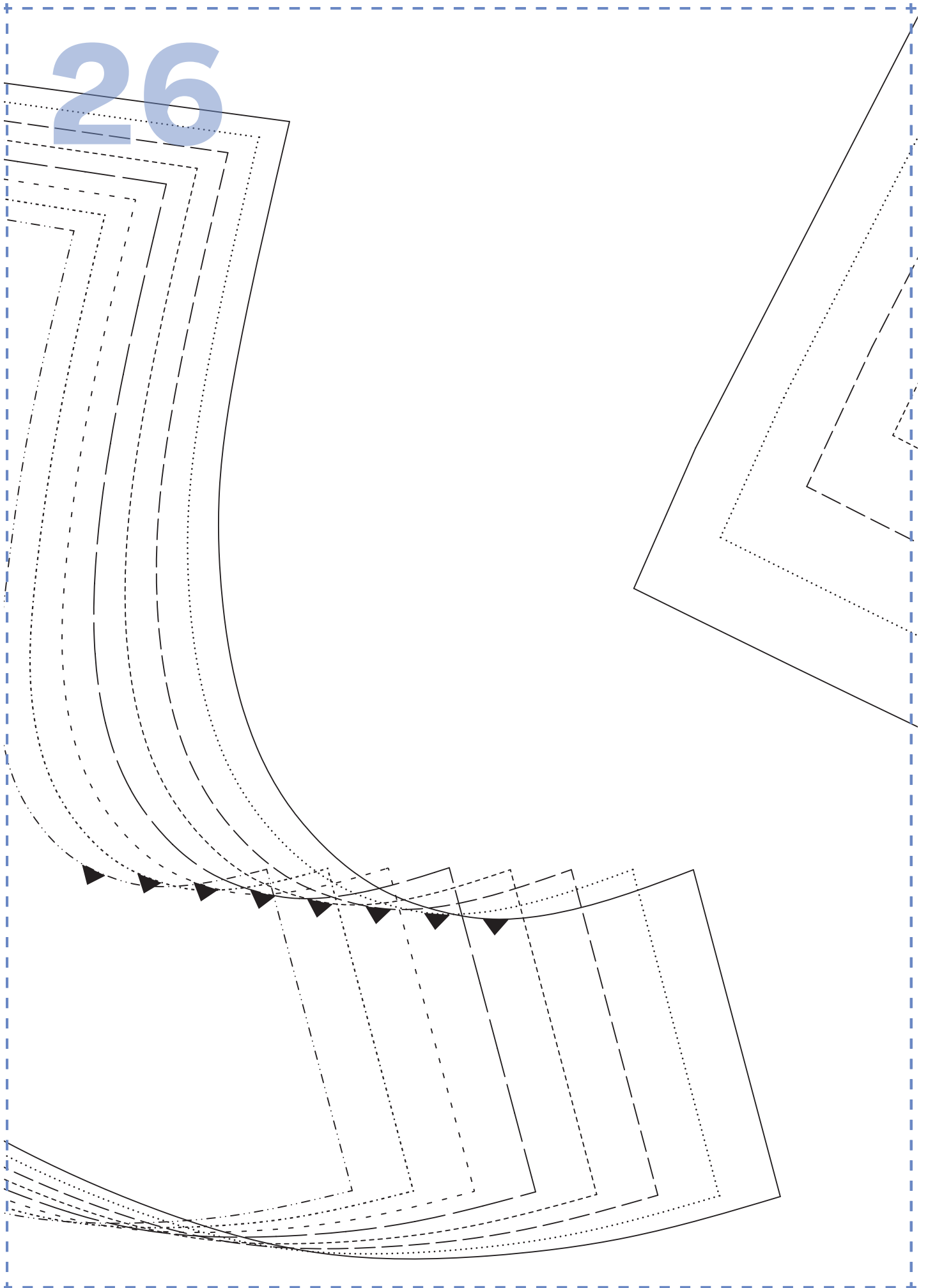
25

sew
GERTIE DRESS
FRONT FACING

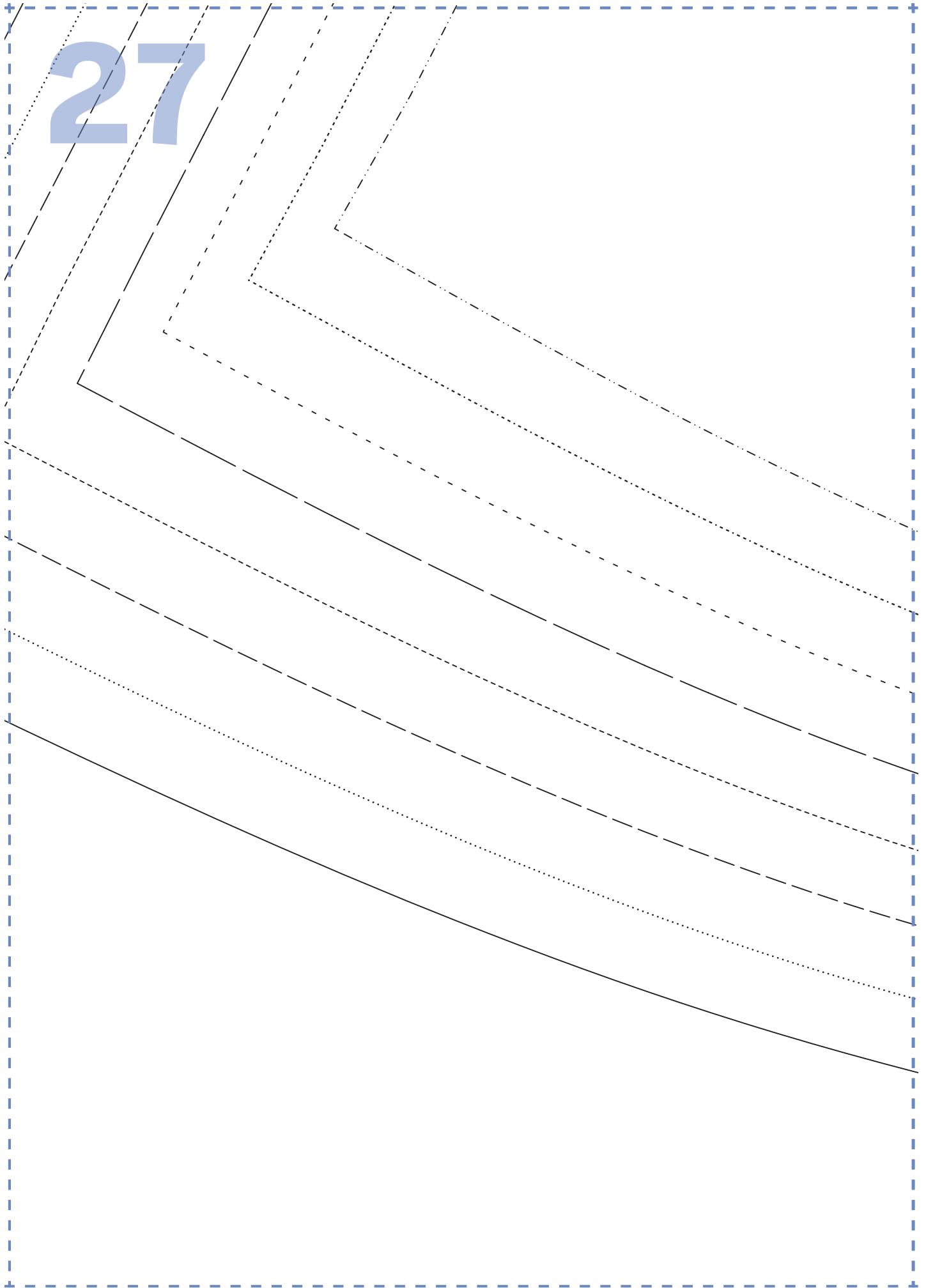
CUT ONE ON THE FOLD IN MAIN FABRIC
CUT ONE ON THE FOLD IN INTERFACING

Place on fold

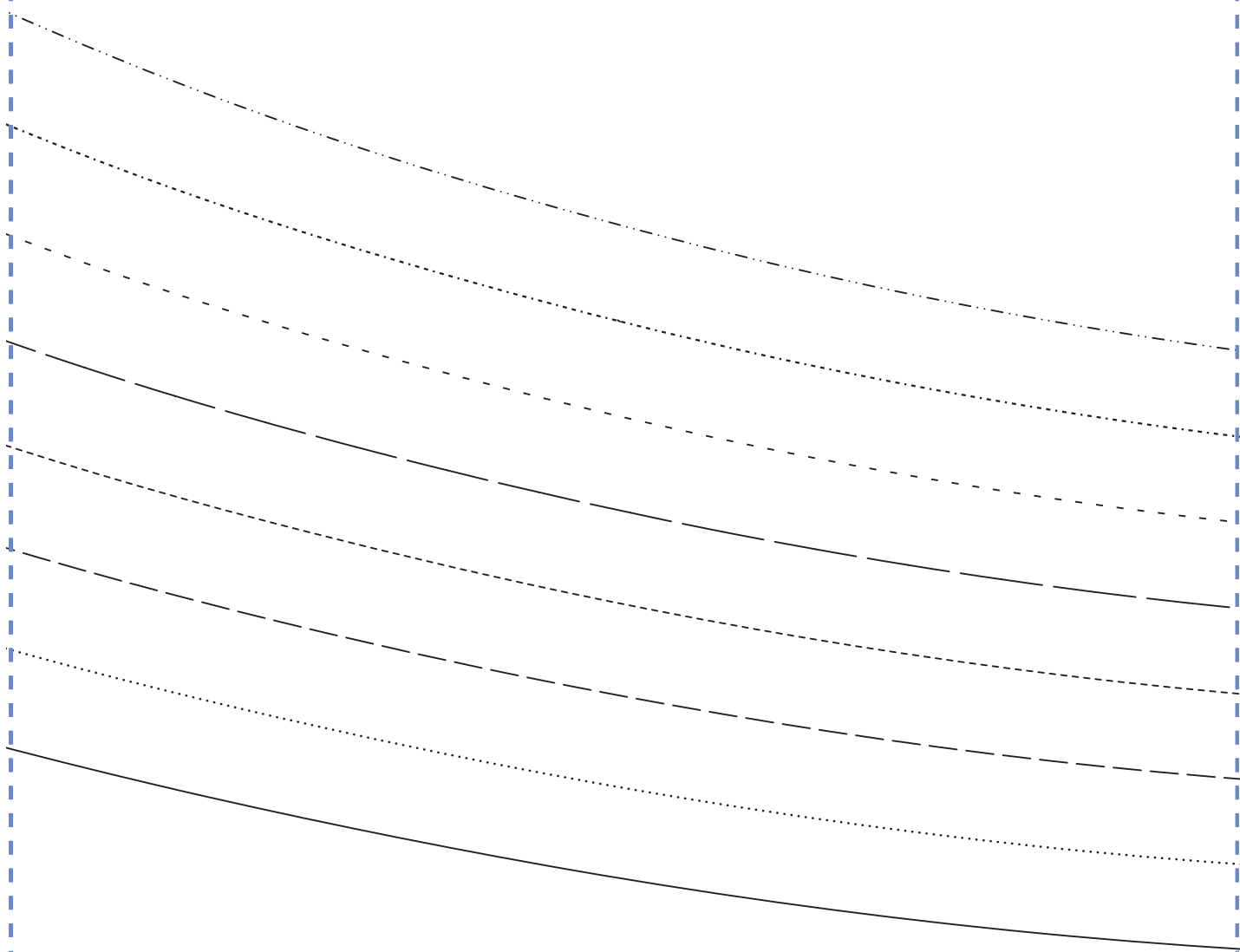
26



27



28



29

Grainline

