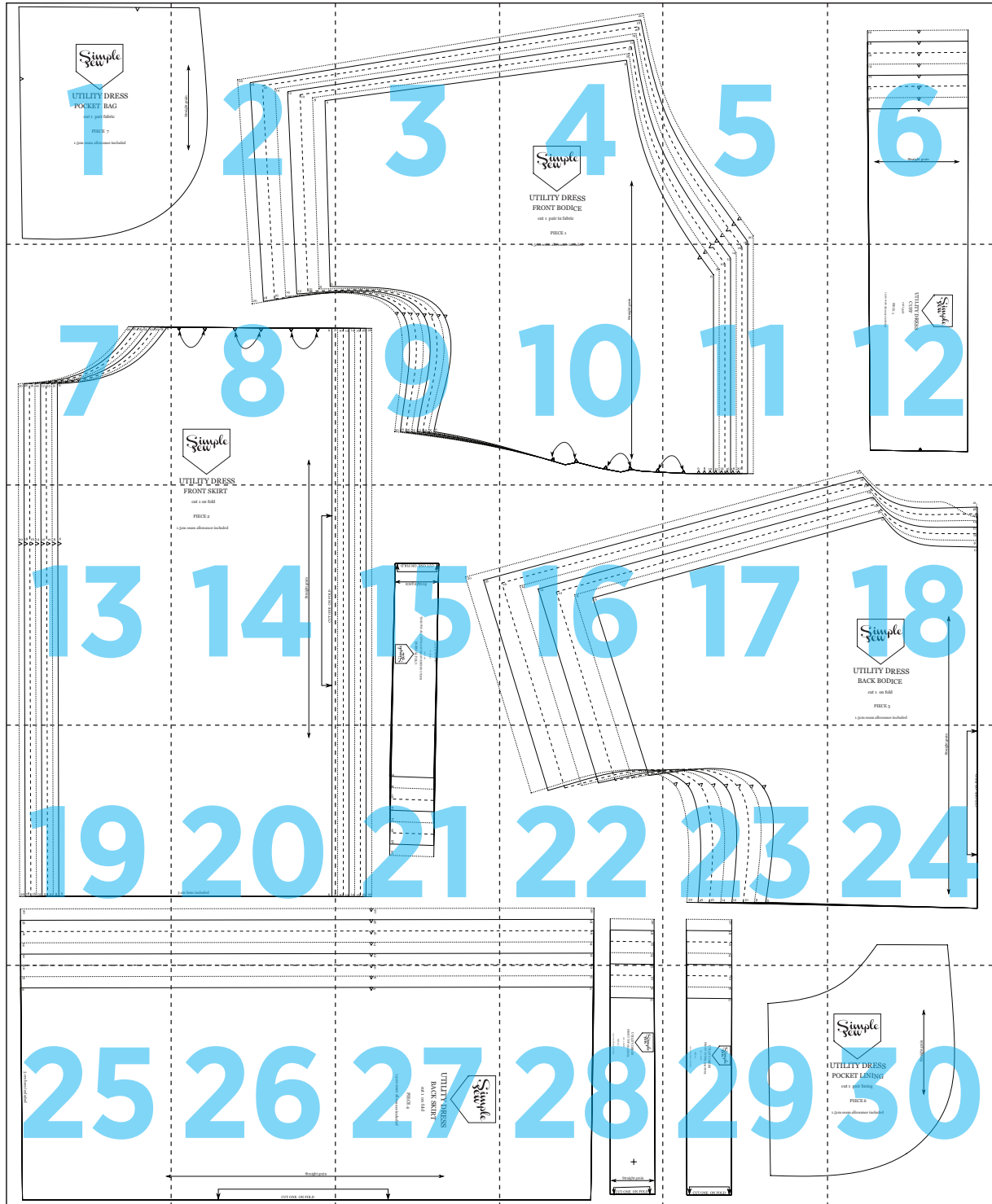




# Utility dress



1



# UTILITY DRESS POCKET BAG

cut 1 pair fabric

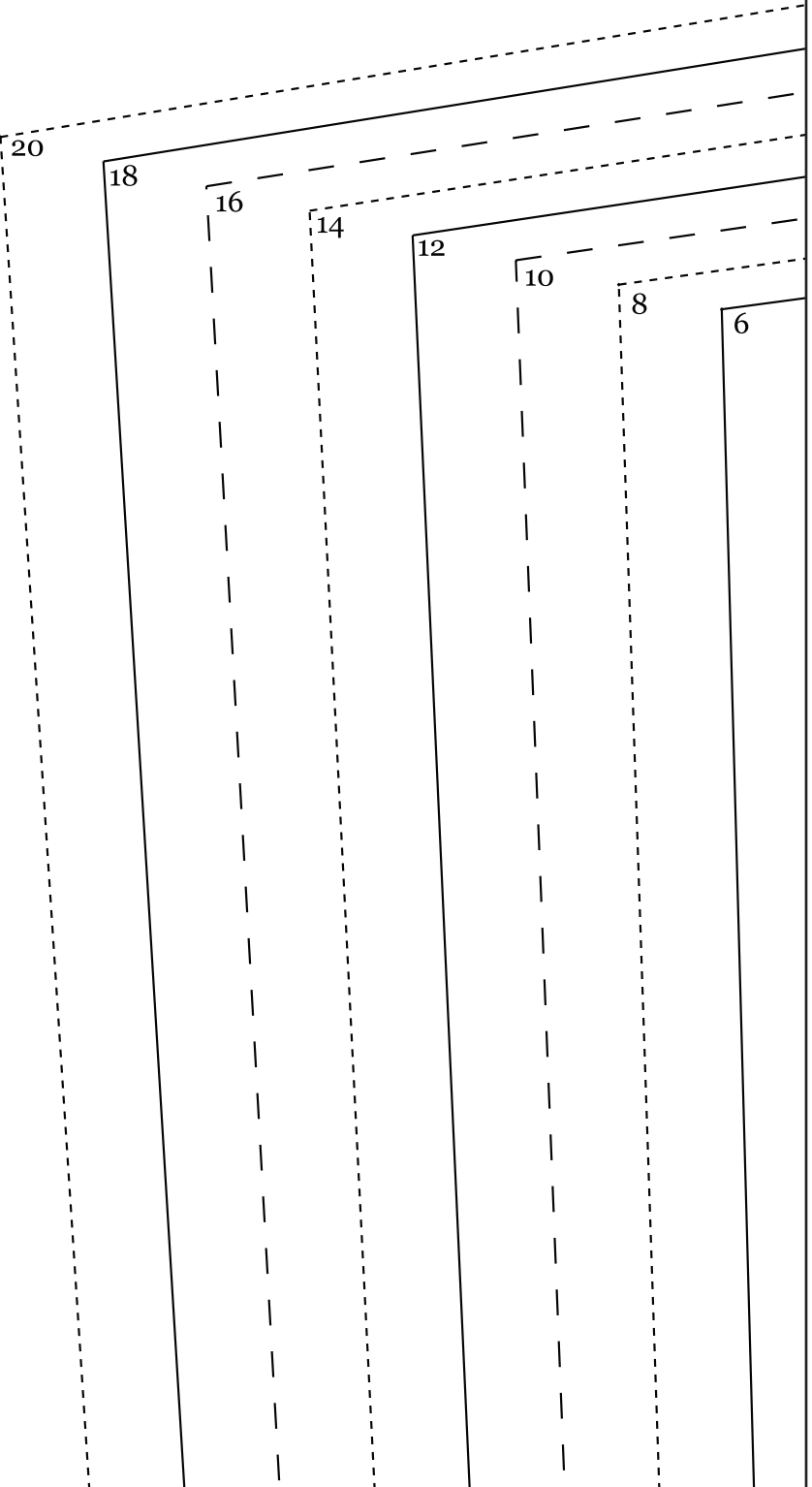
PIECE 7

1.5cm seam allowance included

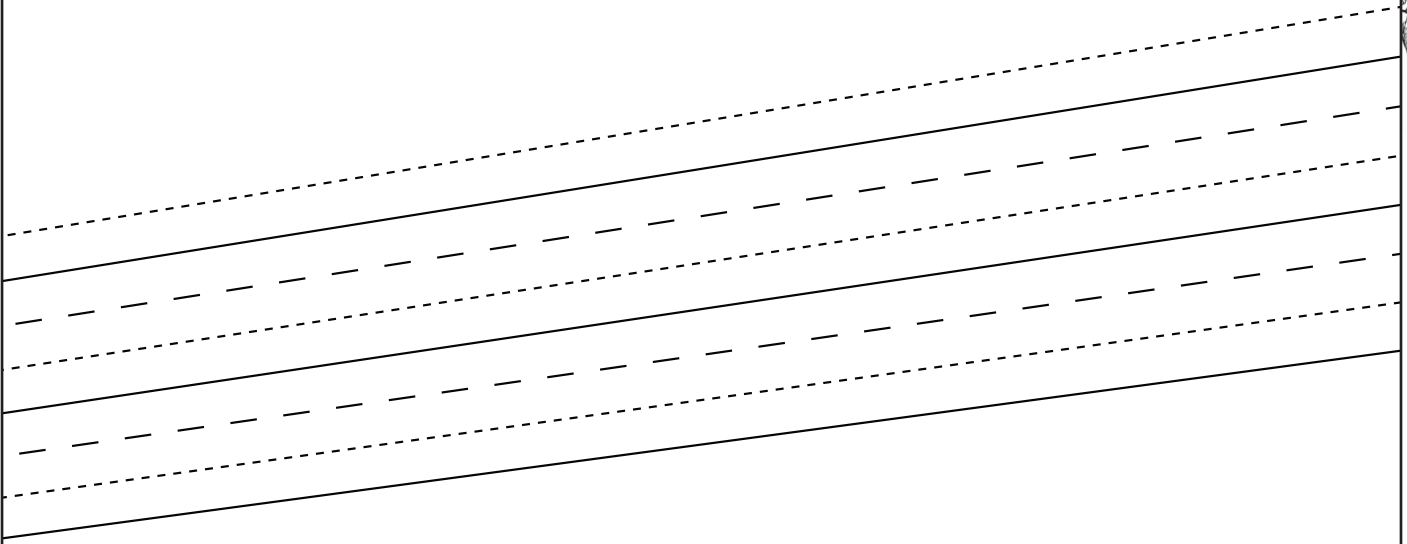


2

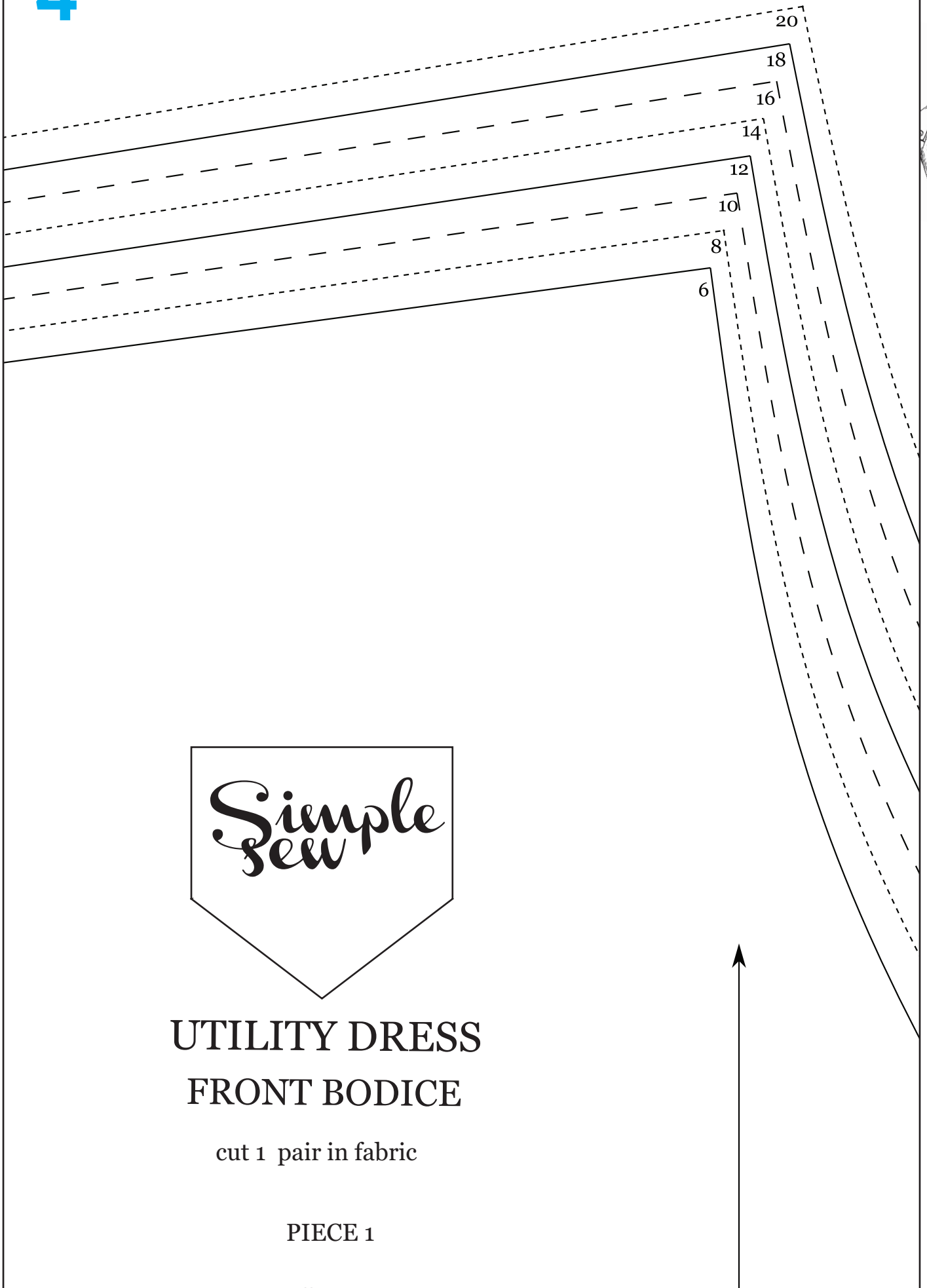
Straight grain



3



4

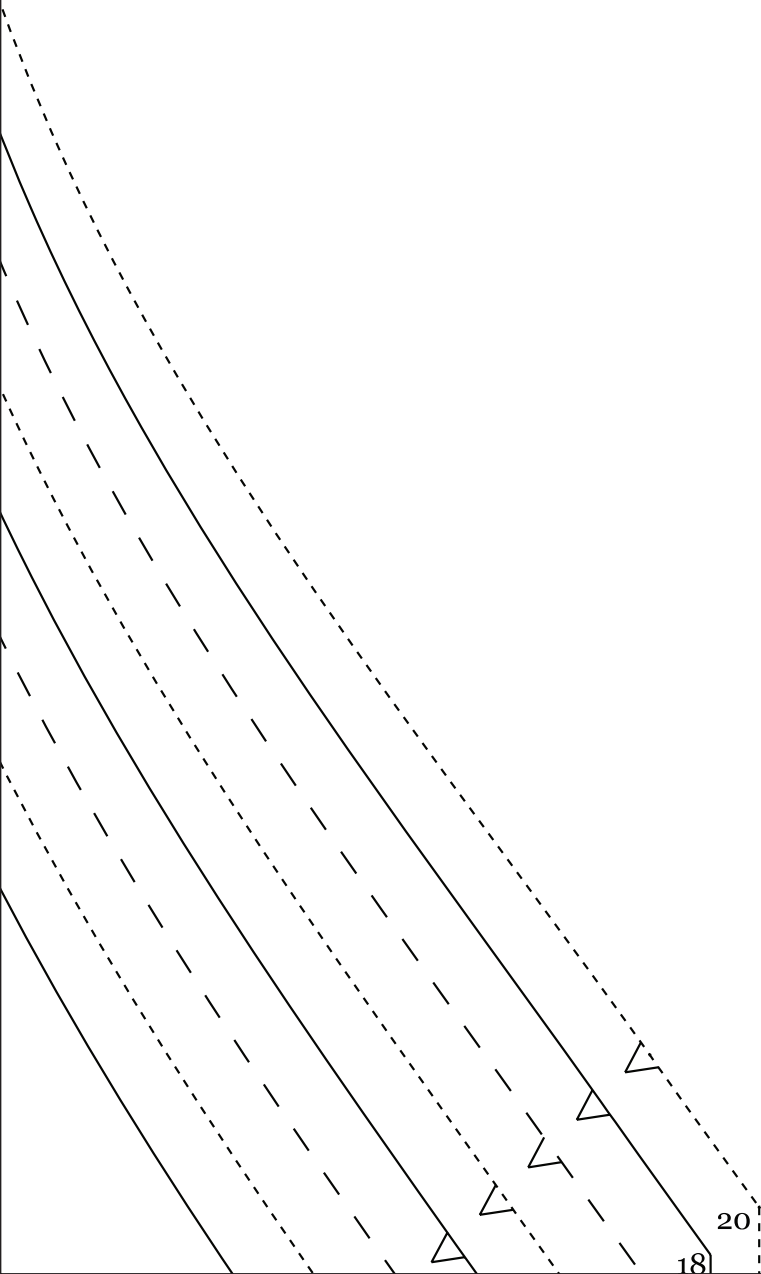


**UTILITY DRESS  
FRONT BODICE**

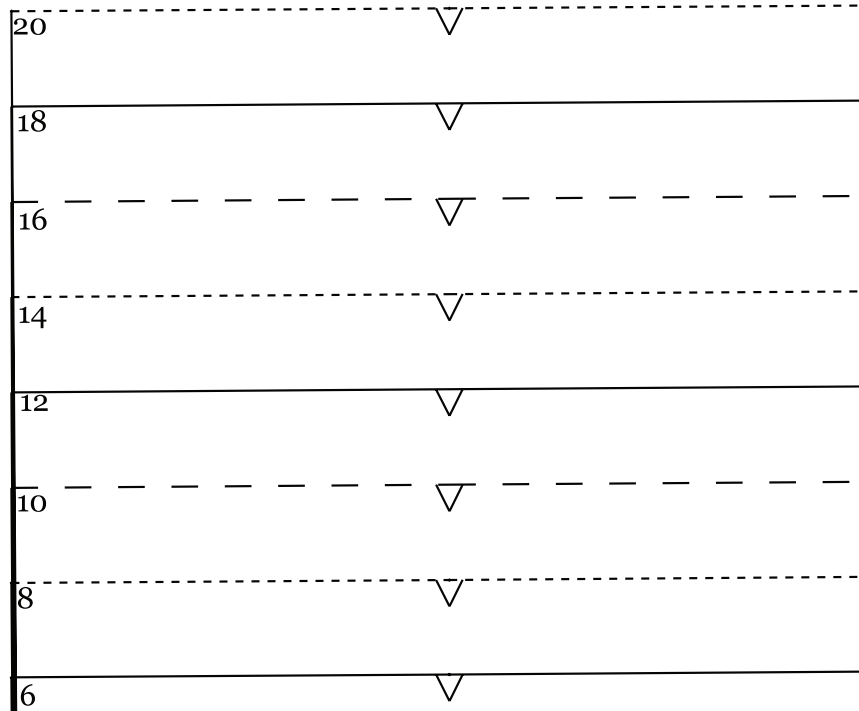
cut 1 pair in fabric

PIECE 1

5



# 6

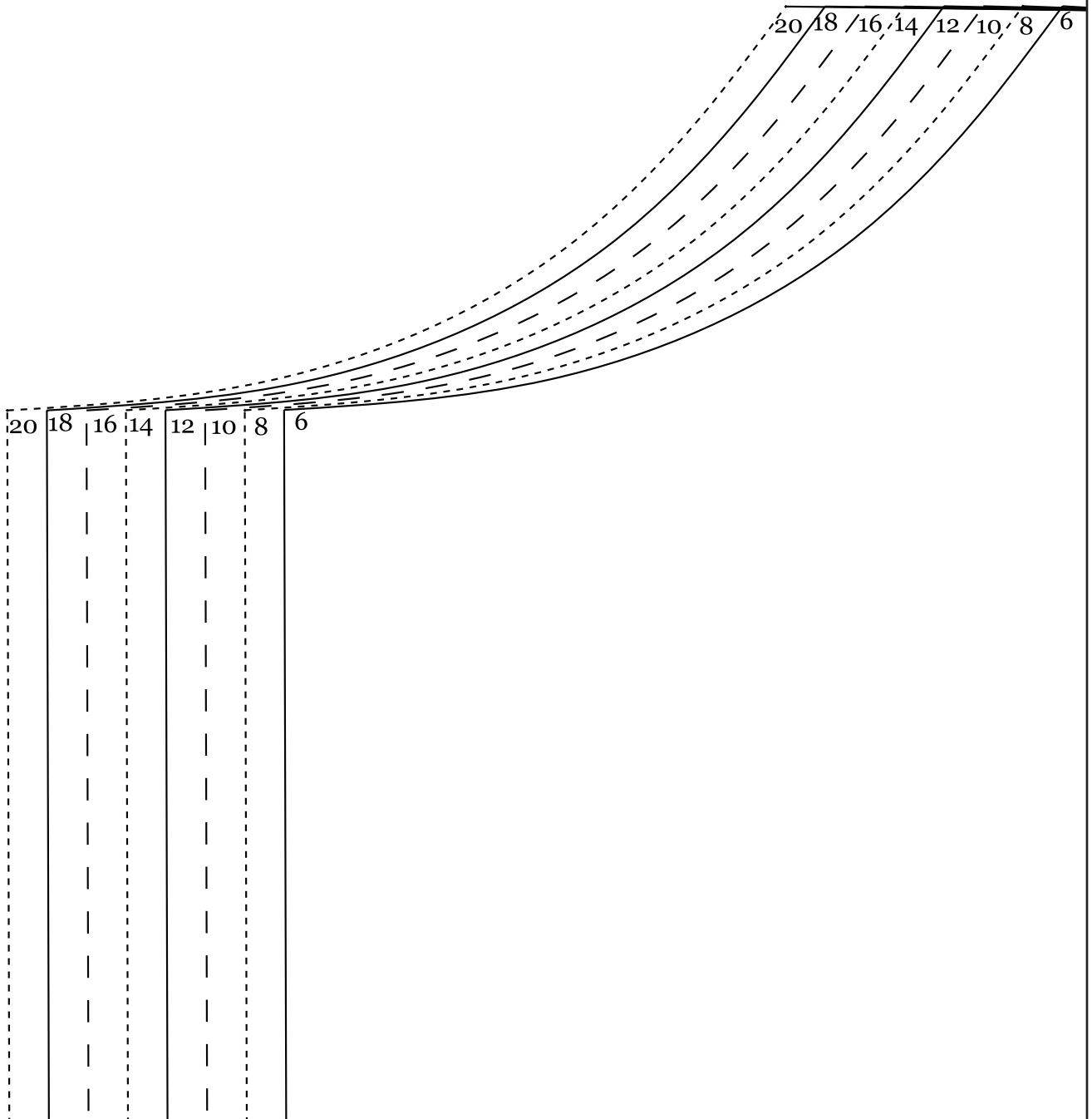


← Straight grain →

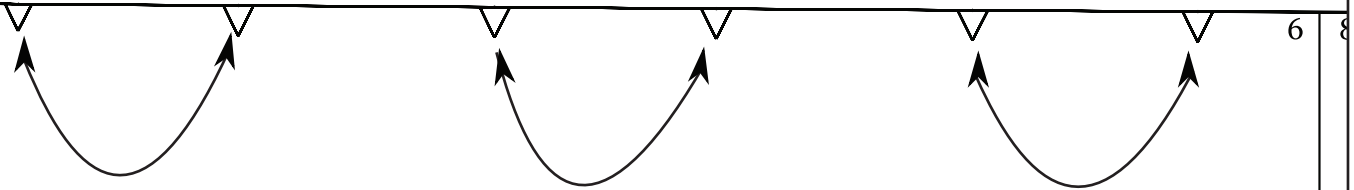
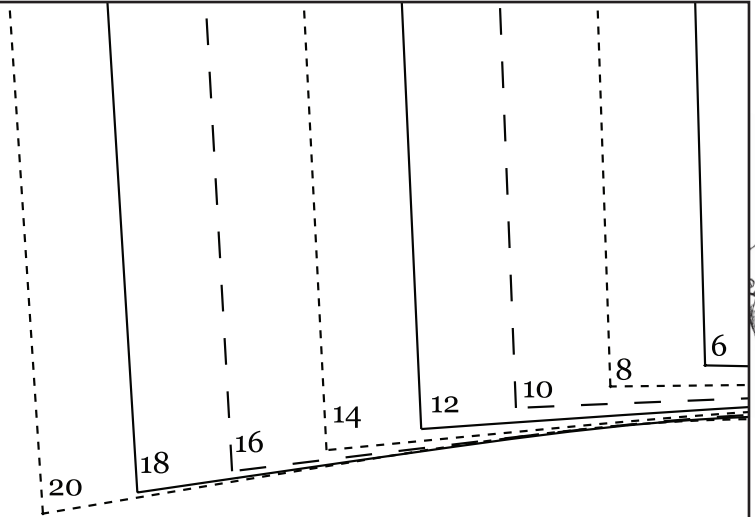




7



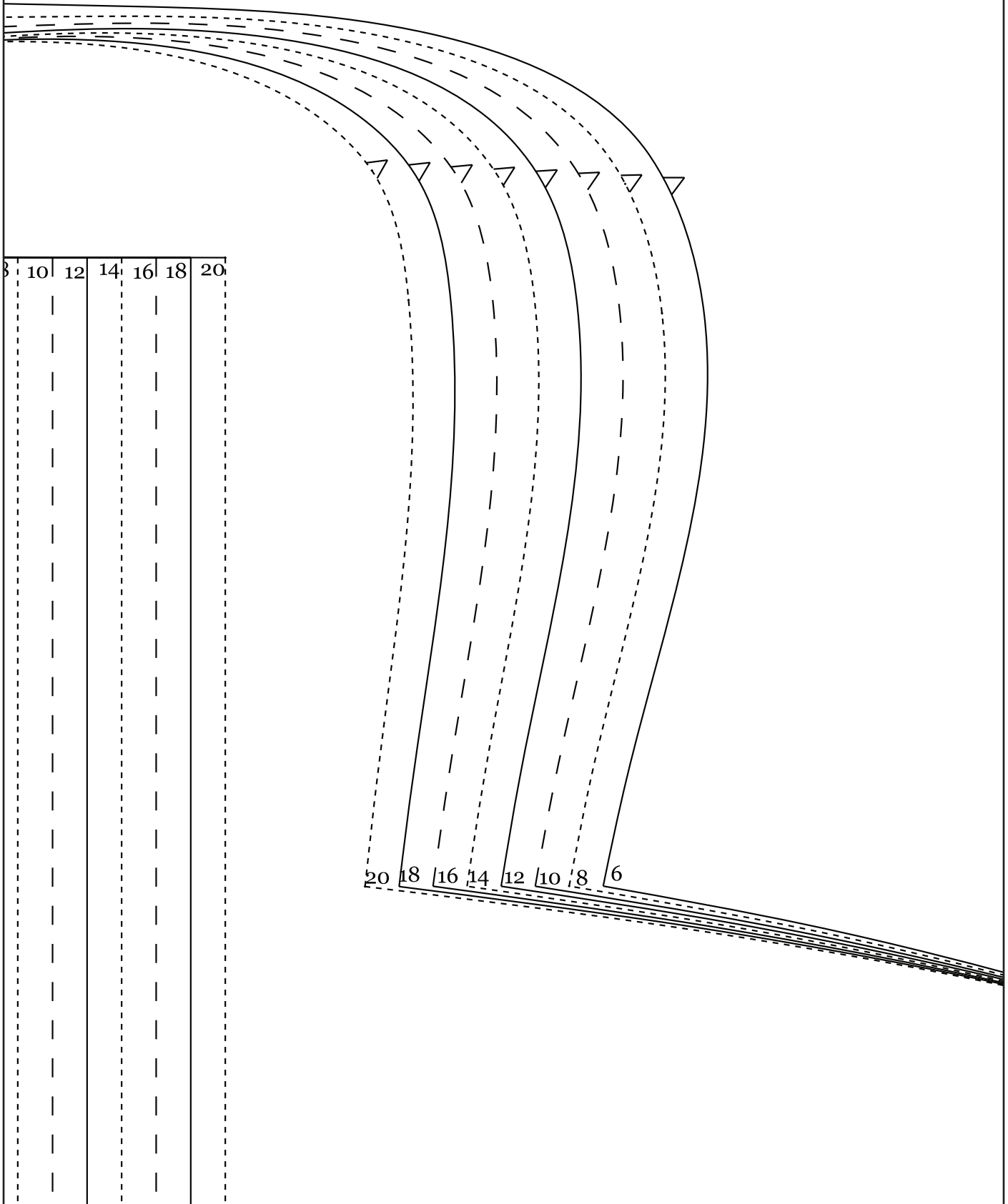
8



UTILITY DRESS



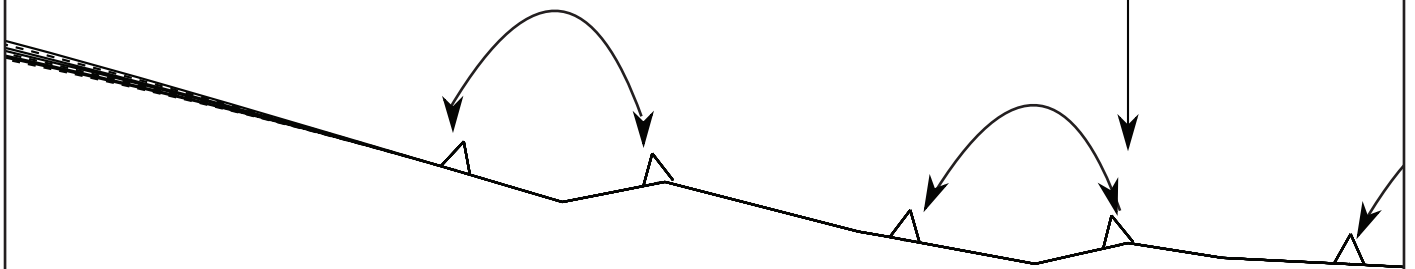
9



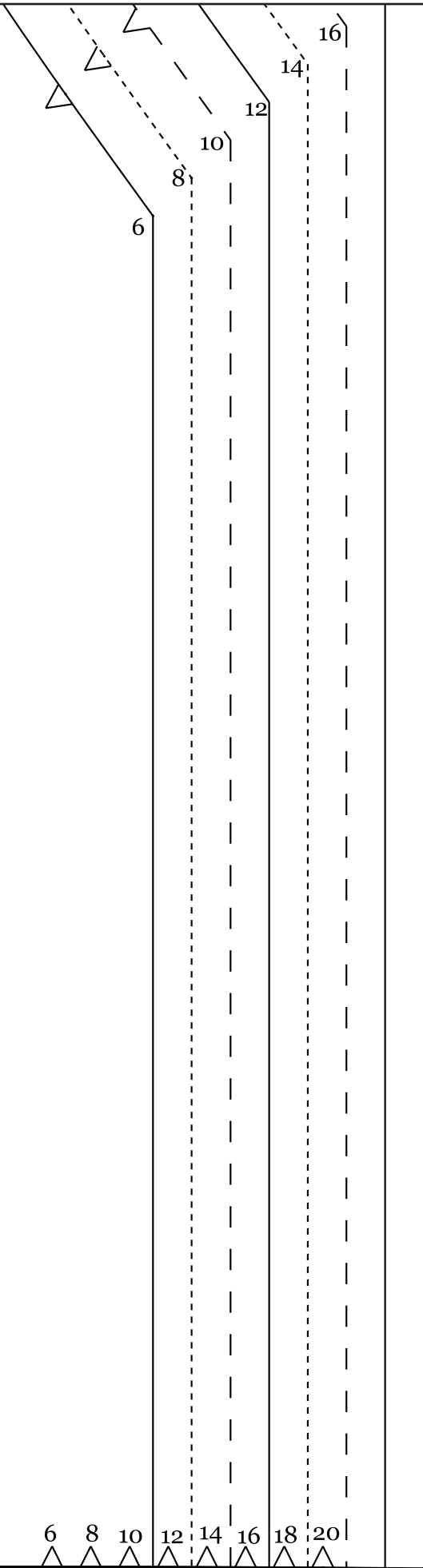
10

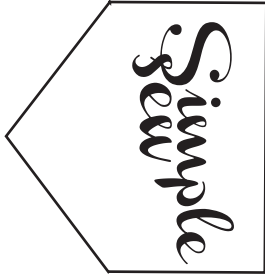
1.5cm seam allowance included

Straight grain



11





UTILITY DRESS  
CUFF

cut 1 pair

PIECE 5

1.5cm seam allowance included

20

18

13

20 18 16 14 12 10 8 6



# 14 FRONT SKIRT

cut 1 on fold

PIECE 2

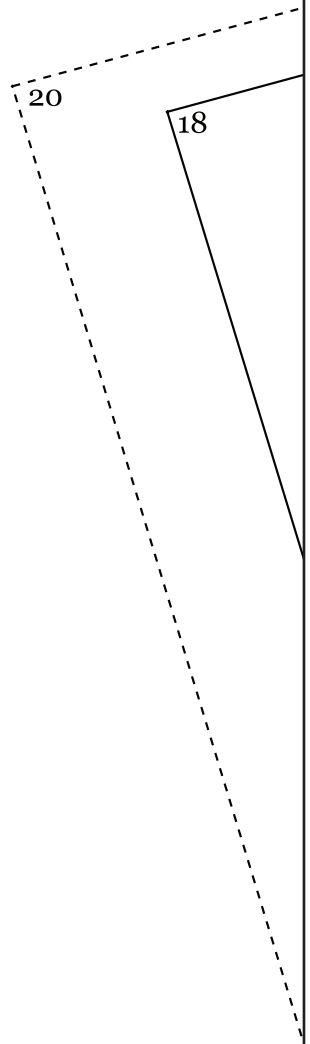
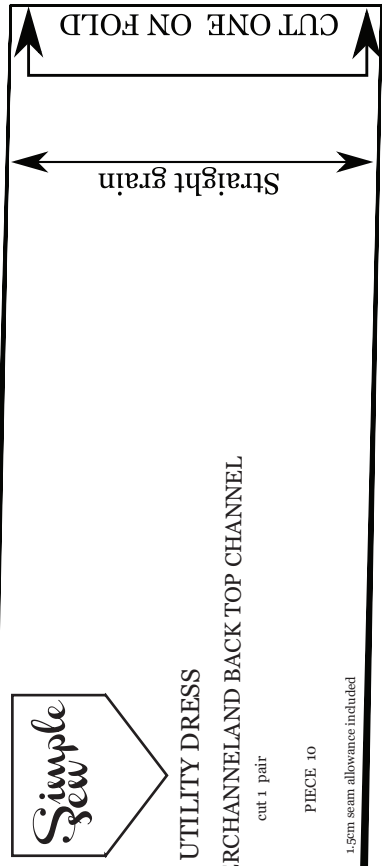
1.5cm seam allowance included

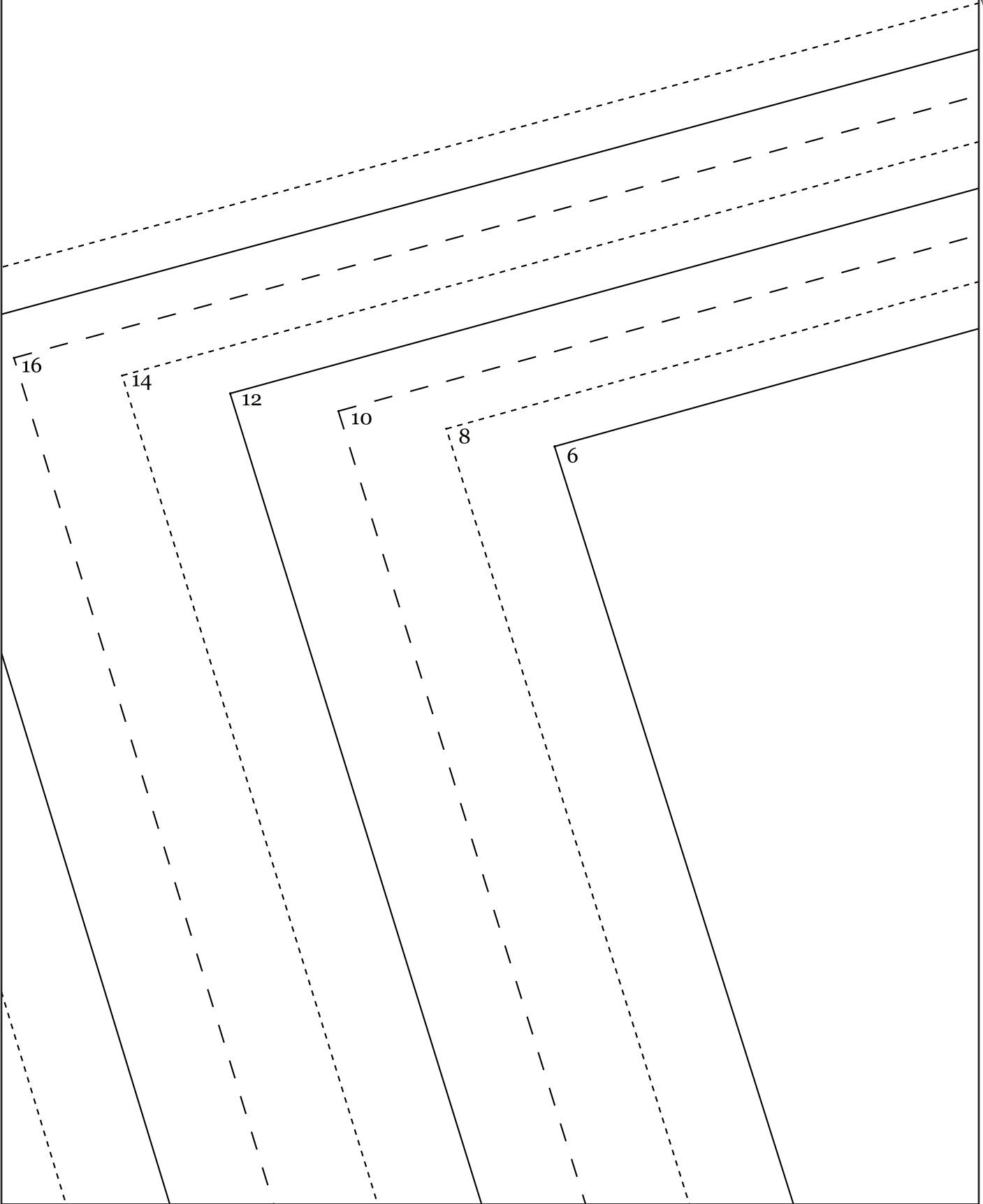
Straight grain

CUT ONE ON FOLD

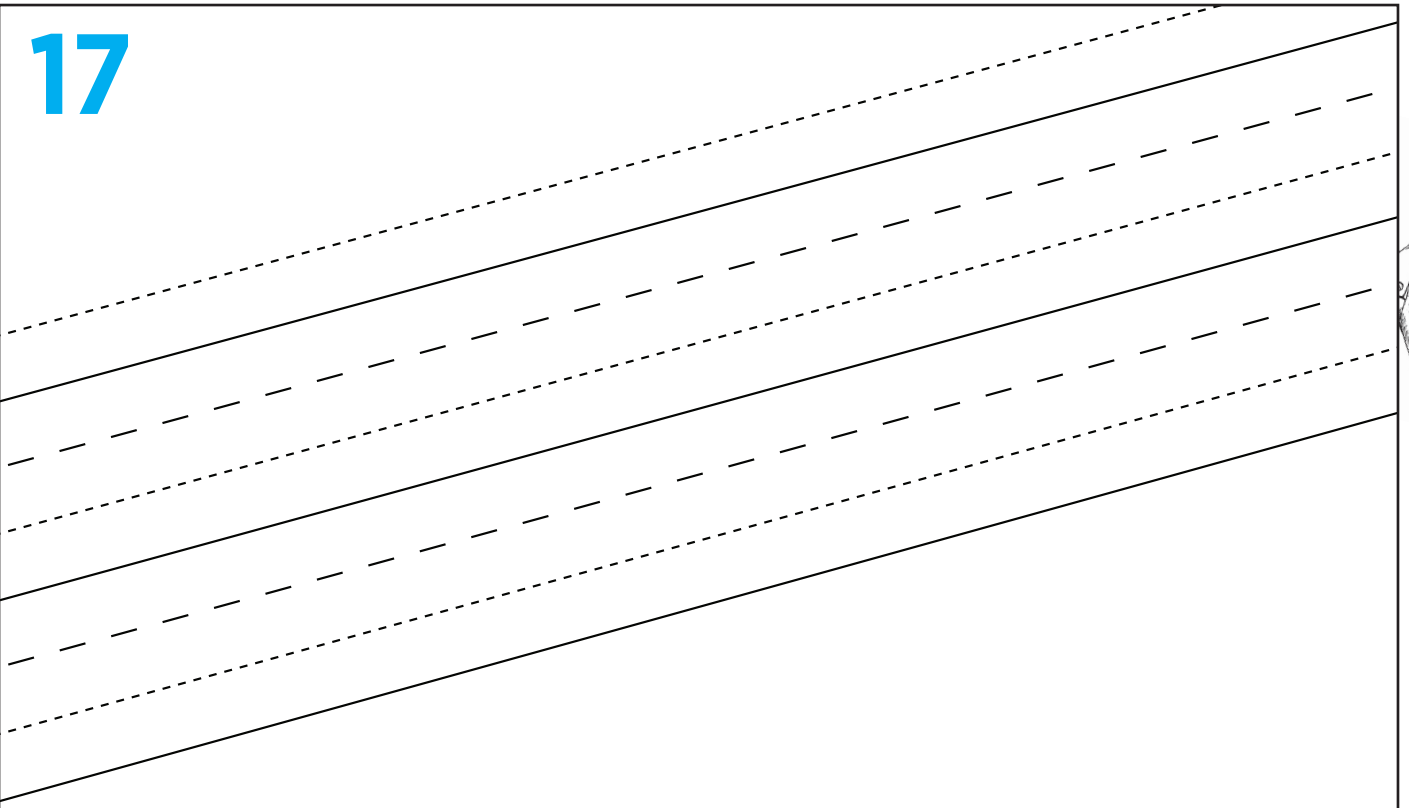




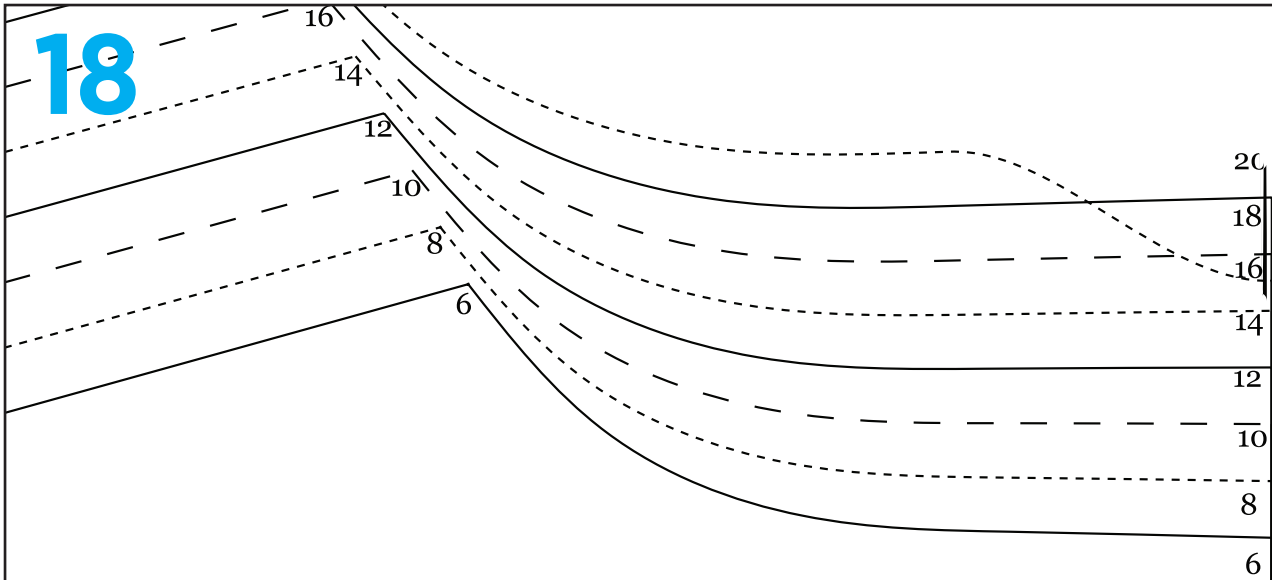




17



18



# UTILITY DRESS BACK BODICE

cut 1 on fold

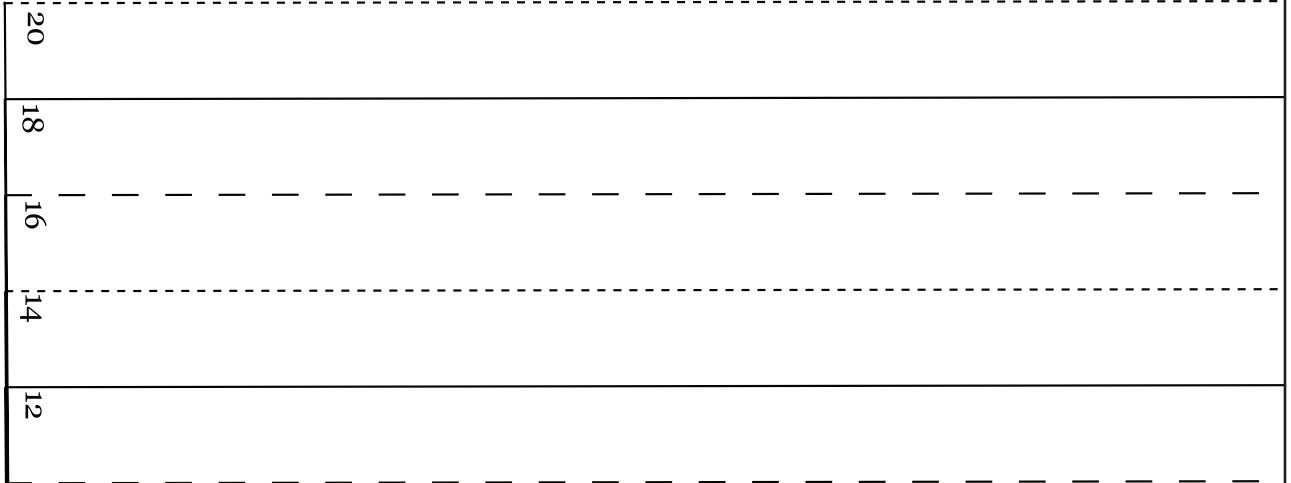
PIECE 3

1.5cm seam allowance included



19

20 18 16 14 12 10 8 6



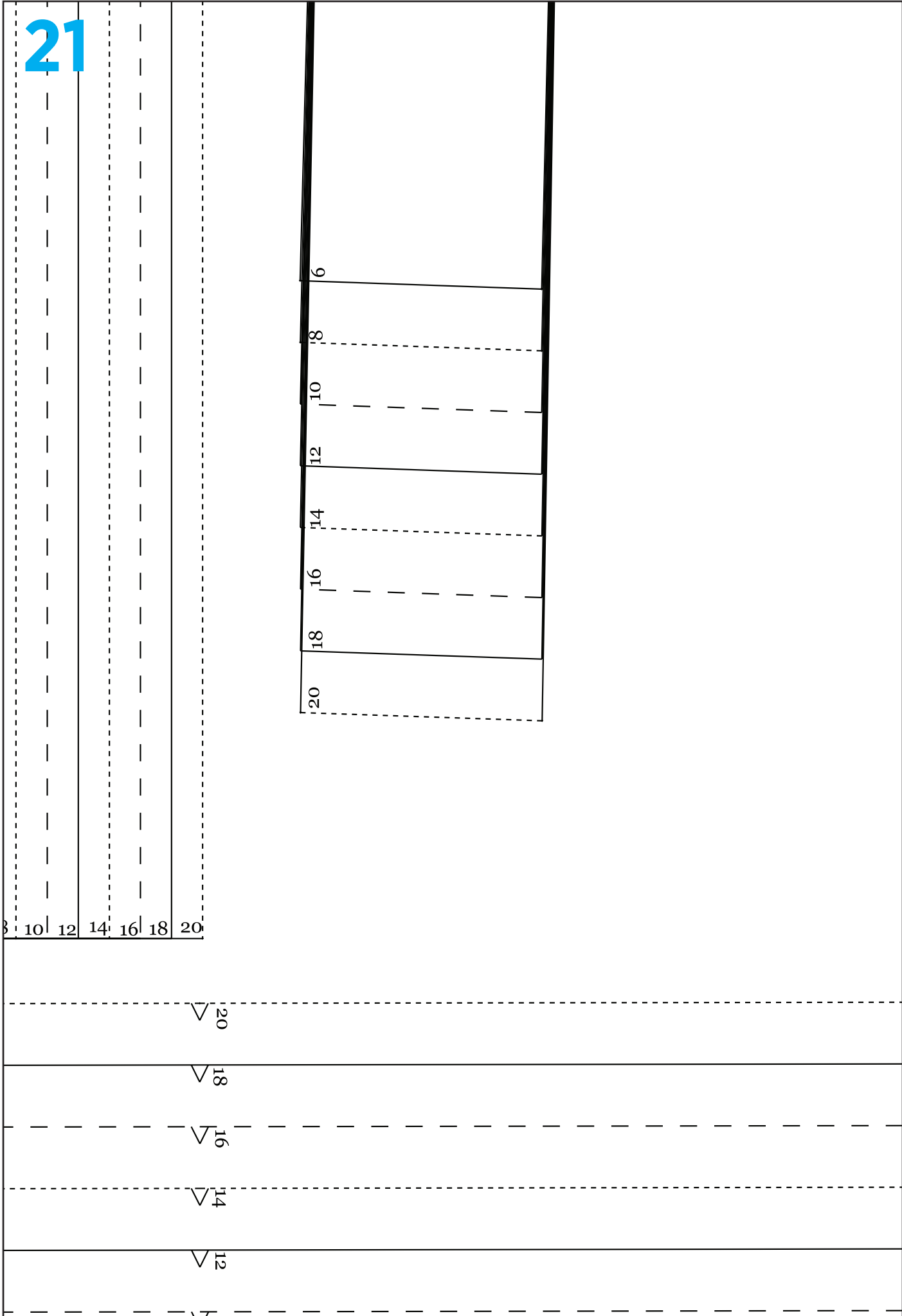
20



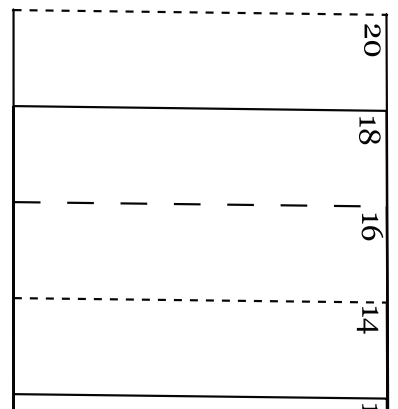
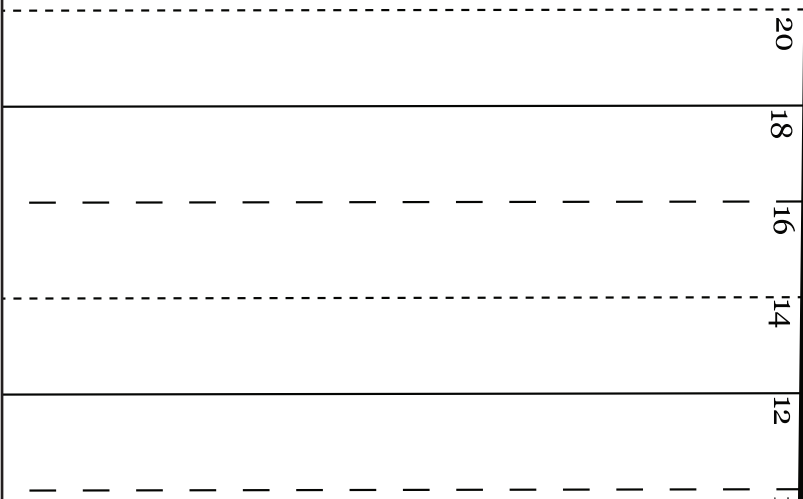
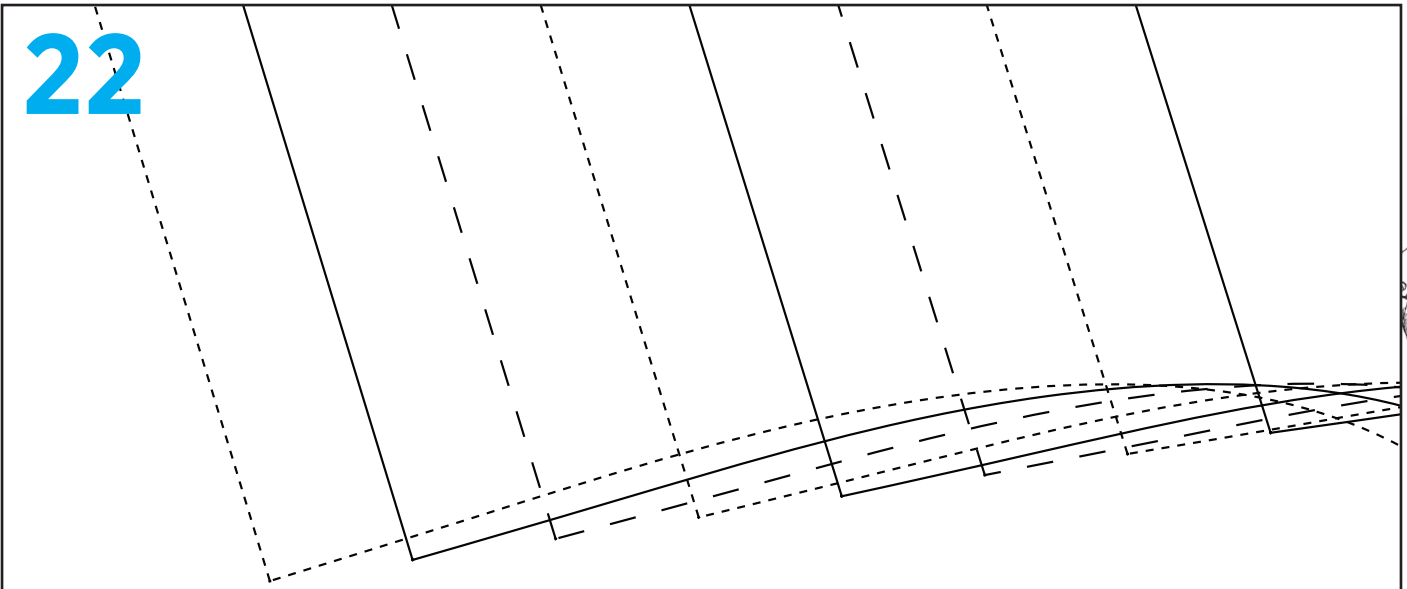
3 cm hem included

6 8

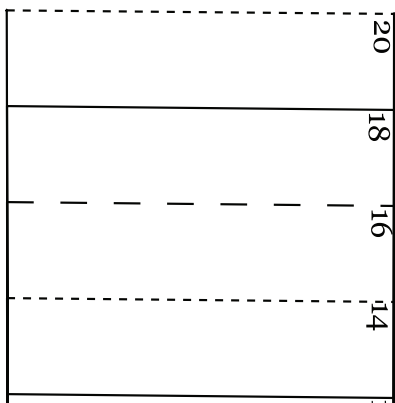
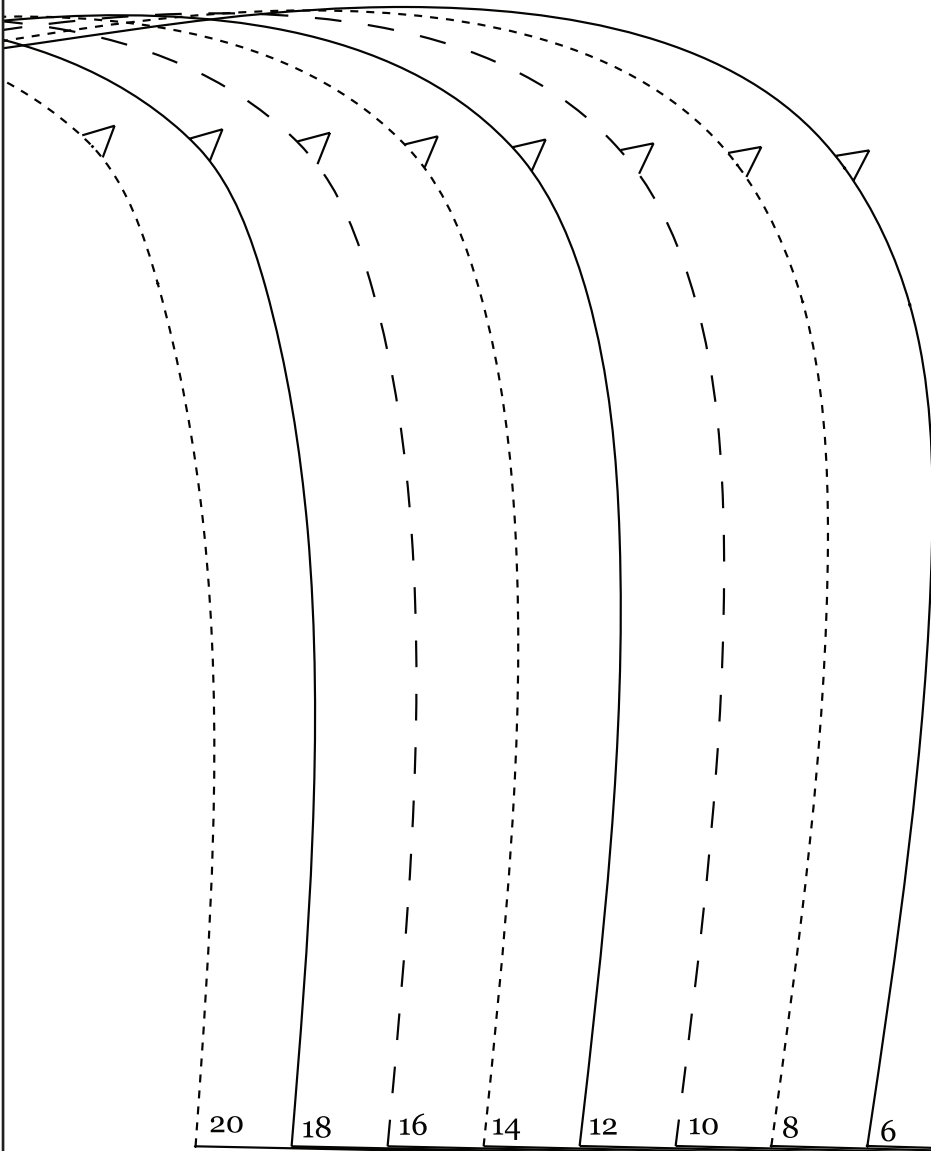
21



22



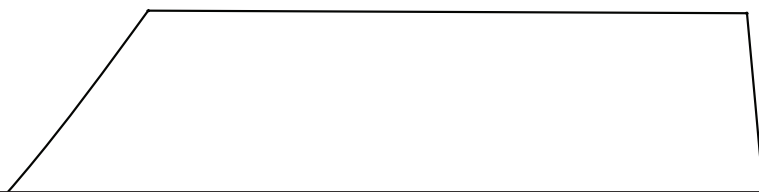




24

Straight grain

CUT ONE ON FOLD



25

10  
8

9

3 cm hem included



26



Straight grain

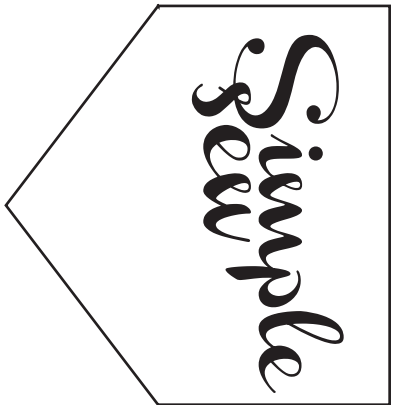


CUT ONE ON FOLD

6

8

6



**UTILITY DRESS**

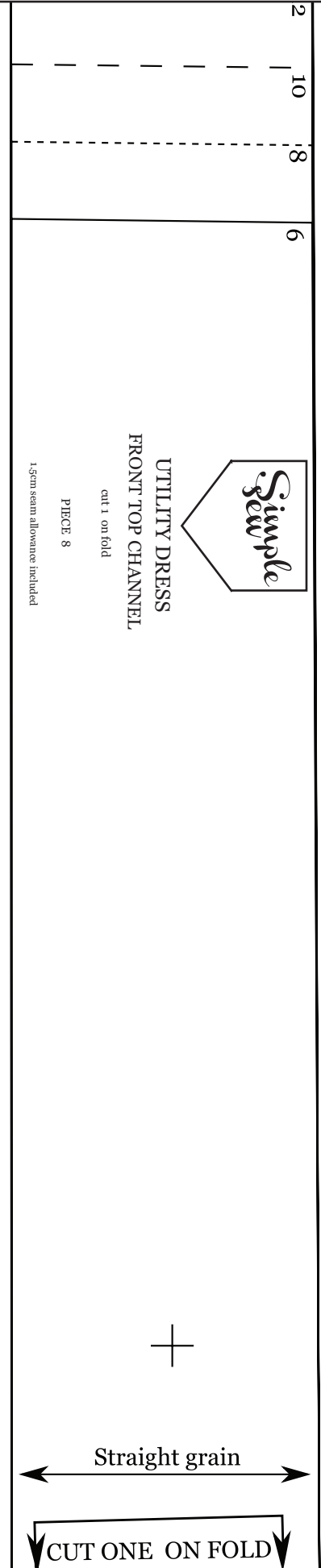
**BACK SKIRT**

cut 1 on fold

PIECE 4

1.5cm seam allowance included





2  
10  
8  
6

*Simple Sew*

UTILITY DRESS  
FRONT TOP CHANNEL

cut 1 on fold

PIECE 8

1.5cm seam allowance included

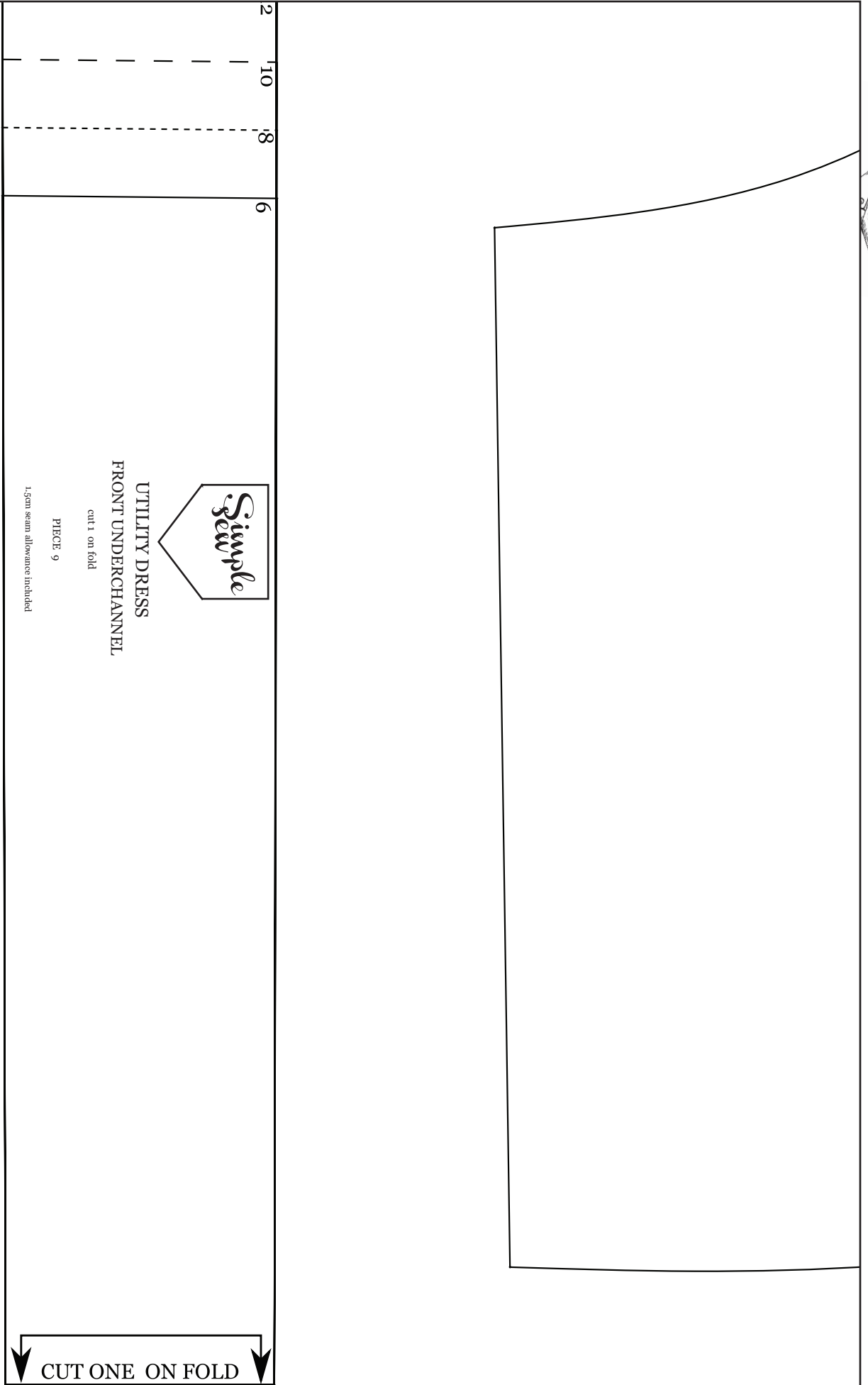


Straight grain

CUT ONE ON FOLD

0  
8  
6

28



30



# UTILITY DRESS POCKET LINING

cut 1 pair lining

PIECE 6

1.5cm seam allowance included

