

STURDY FABRIC BASKET

finished size > 8" wide by 5" deep by 5" high.



This fabric basket is quick and easy to create and is made durable with a Peltex interfacing. All you need is two fat quarters (or large scraps), some Peltex and a scrap of leather or an old belt for the handles (which are optional) and in less than an hour you'll have a pretty fabric basket to use for storage or as a gift giving vessel. **Share your pics with #sturdyfabricbasket!**



materials

- One fat quarter main fabric
- One fat quarter lining fabric (I recommend a non-directional small print or a solid)
- Peltex 71F single-sided fusible interfacing
- Leather or a belt for handles (optional)
- Embroidery floss (optional)
- Pattern pieces (page 6)

a few notes...

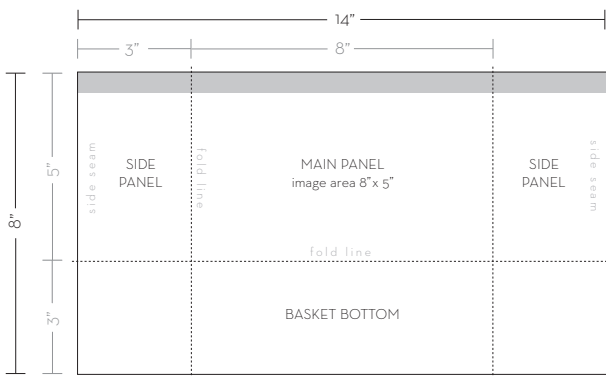
- Read through the entire pattern before beginning.
- All seam allowances are 1/2".
- RST = right sides together, WST = wrong sides together
- Fat quarter = approx 18" x 20"
- I used quilting weight organic cotton here, but you can also use a thin linen blend or chambray. Lightweight canvas could be used for the main body but I wouldn't recommend it for the lining as it may be hard to wrap over the edge.

cutting directions

Print pattern pieces and cut out around the outer black lines (the center gray lines and dots are placement indicators), set aside.

MAIN FABRIC

If using a **non-directional print**, cut one piece 14" x 15", set aside. If using a **directional print**, cut two pieces 14" w x 8" high (see piecing diagram below for specifics on where to place a focal image). Place your two pieces RST with the pattern running the same direction and sew along the bottom 14" dimension. Press seam open. Your directional prints should be going in opposite directions,

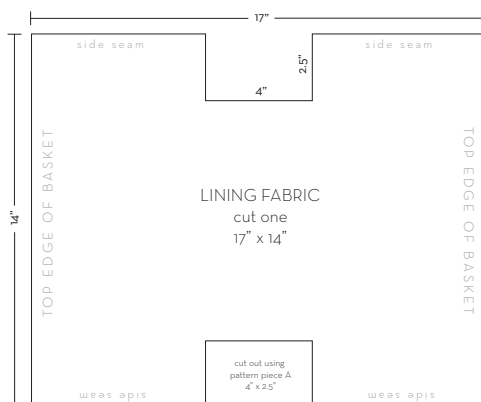
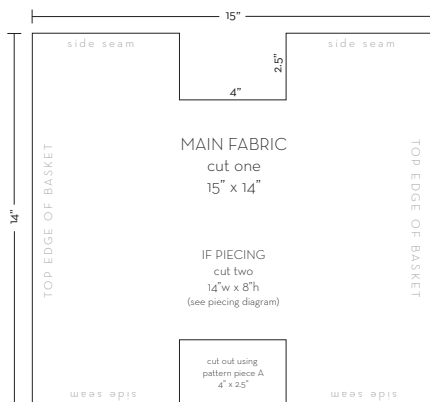


cutting directions (continued)

LINING FABRIC

Cut one piece 14" x 17"

I recommend using a non-directional small print or a solid for the lining. You will only see about 1/2" on the outside of the basket which is why a small print is best and because the lining folds over the edge of the outside of the basket, a directional print would be upside down either on the inside or on the outside of the basket.

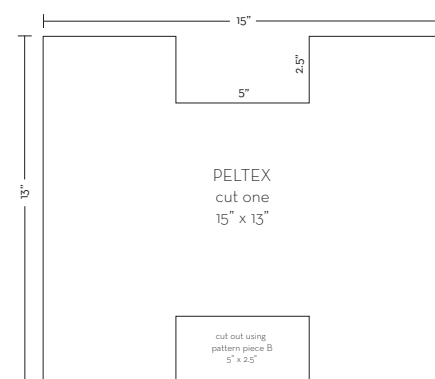


PELTEX 71F (interfacing)

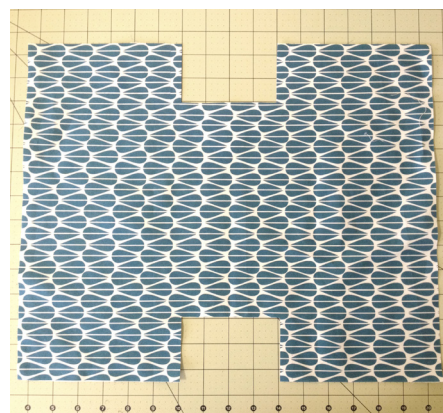
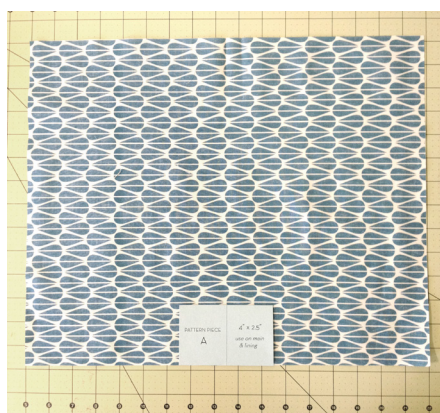
Cut one piece 13" x 15"

LEATHER (for handles - optional)

Cut two pieces 6" x 3/4"

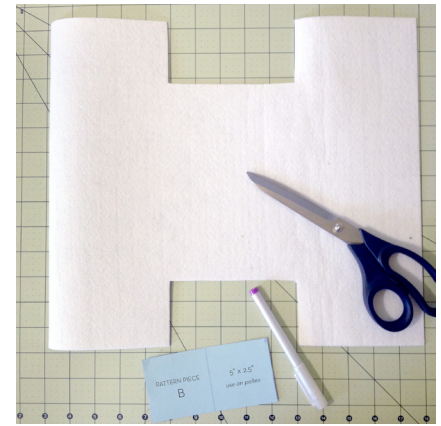
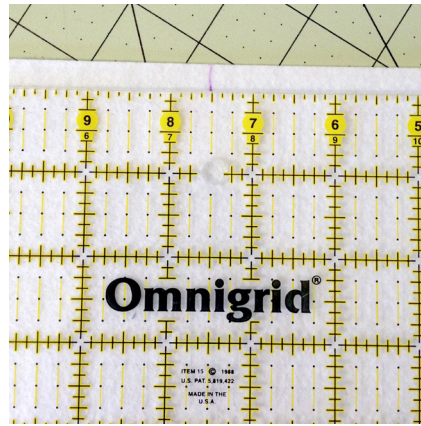


Fold the main fabric in half, WST, and crease with your finger to mark the center of the longest dimension. Place pattern piece A centered on the fold. Trace and cut out with scissors. Repeat on opposite edge. Repeat these steps with the lining fabric.



cutting directions (continued)

On the Peltex, mark the center of the 15" dimension along both 15" edges. Place pattern piece B centered on the mark along one edge. Trace and cut out with scissors. Repeat on top edge. Set aside.

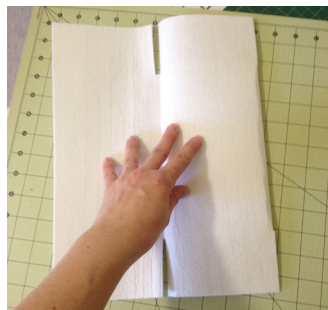
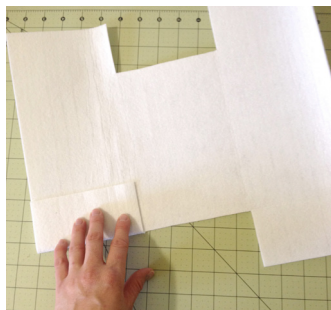
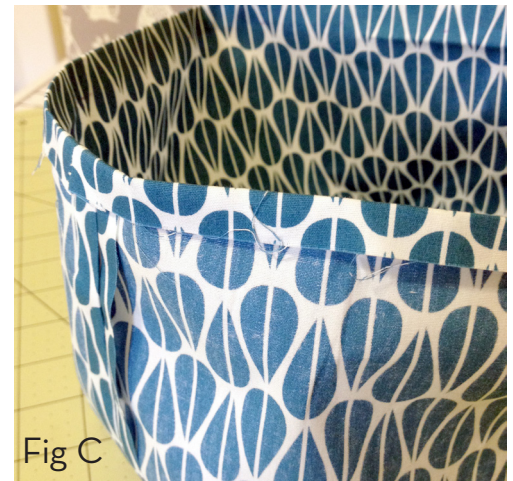
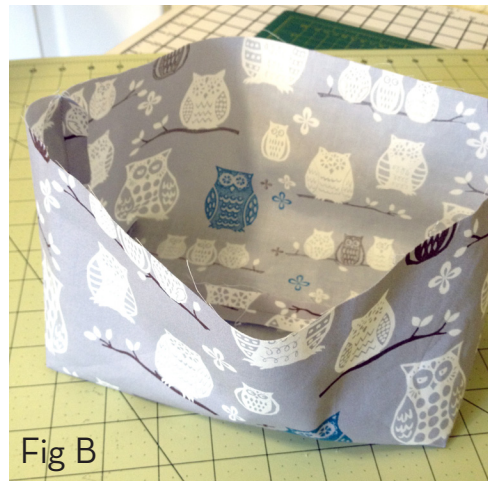


constructing the basket

Fold the main fabric in half, RST, lining up the top 14" edges. Sew the two short sides with a 1/2" seam, press seams open.

Next, open up your piece with the center of your fabric (where your fold just was) flat on the table. Fold one side seam side in towards the center laying flat along the middle section of the fabric, lining up the bottom side openings and sew with a 1/2" seam (Fig A). Repeat with the other side. Turn your piece right side out and set aside (Fig B).

Repeat the above steps with the lining fabric but leave inside out. Press the top edge over, WST, 1/2" (Fig C) and set aside.



Next, take your Peltex and firmly finger press a crease at each of the 'seams' making sure to keep the fusible side out. This helps form the basket shape. I like to leave it folded up under a heavy book for a few hours or overnight to help press the seams crisp.

If desired, you can sew the side flaps together for extra stability. If you use a thicker material for the handles, the sides may bow out slightly at the seams after you attach them. Fold the Peltex up into the basket shape with the fusible side out. Butt the edges of the side flaps up against each other and sew a few stitches at the top and where it meets the bottom.



construction (cont.)

If you did not sew the side seams, fold all sides of the Peltex into the center and insert into your main fabric body. (If you did stitch the peltex, pull the fabric up around it, like putting on clothes!) Open up the Peltex and adjust the placement as needed. Be sure to push it tight into the corners and seams and gently pull your fabric up from the outside to get a tight fit.



Once your Peltex is in place, hold a folded towel or oven mitt in one hand inside of your basket and press with a hot steam iron from the outside against your hand, one side at a time, to fuse the fabric to the Peltex (Fig D below).

Next, insert your lining into the basket, once again pushing tight into the seams and adjusting as necessary. The lining should extend up over the top edge of the basket a bit over 1/2" (Fig E).

Fold the lining down over the edge of the basket (Fig F). You now have a few options for finishing this step. You can top stitch in place using your machine, though the Peltex is a bit tricky in the corners and I recommend using a walking foot to avoid bunching and shifting. Alternatively you can create a more decorative stitch by hand with embroidery floss or for a clean look, you can use a bit of fabric or Elmer's glue along the top rim of the basket before folding the lining over (which is what I did here).



Fig D

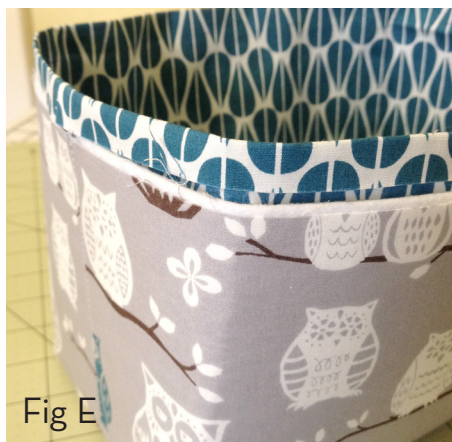


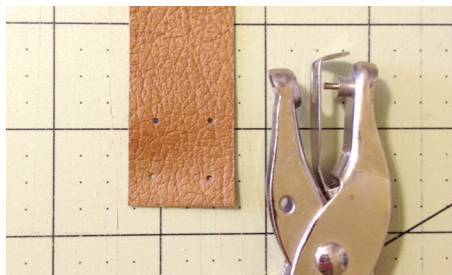
Fig E



Fig F

attaching the handles (optional)

If using a 3/4" strip for the handles, use pattern C to mark four dots on each end on the wrong side of your handles. If using a different sized strip (such as an old belt), mark four holes in a similar orientation. Punch a hole thru each dot using a small hole punch or awl.



attaching the handles (continued)

I recommend placing the handles so that each side is centered between the outer edge of the basket and the center seam and with the punched holes just below the folded-over lining. You can also line up the top holes to fall within the lining so you are stitching through and helping to secure in place if you did not top stitch.

Using four strands of embroidery floss, hand stitch your handles in place going through the holes and all layers of your basket. Begin by inserting your needle through one hole in the handle from the back to the front and then place your handle against the basket. This will hide your knot. You can stitch to create any pattern you like, whether a square, an X or two lines running vertical or horizontal. Repeat your pattern at least three times for durability and end by hiding your knot in between the leather and fabric once again. Repeat for the other handle and you're done!



Now wasn't that easy? Go on and make some for every room of your house and as gifts for everyone you know!

Fill one with baby supplies for a shower gift, food items as a hostess gift, craft supplies (duh!) for a friend's birthday. You get the point.

Share your photos and find inspiration with the tag #sturdyfabricbasket!



Enjoy!

Featured fabrics are from the line *Westwood* by Monaluna.

variations

LINING FOLD OVER

If you would like the lining fold over to be larger, just add four times the amount you would like to see from the front to the longer dimension of the lining piece. As written, the lining piece is cut 2" wider than the main fabric piece. This makes the lining 1" taller than the basket. It is folded 1/2" and then wraps over the basket edge 1/2". If you would like to see 1" of lining folded over the top of the basket, you would cut your lining piece 19" wide (rather than 17"). This would make your lining 2" taller than your basket. You would press the top edge of the lining over 1" and then have 1" left to fold down over the top edge of your basket.

INTERFACING

This pattern is designed to create a sturdy 'hard-sided' basket, though if you would like a softer basket, the same pattern can be used with some simple modifications to the interfacing. Leave out the Peltex 71F layer and instead use a fusible fleece or quilt a piece of batting to the main fabric and/or the lining before cutting to size and sewing into shape. I would then recommend top stitching the lining in place after folding it over.

HANDLES

The handles can also be attached to the inside of the basket for a different look. I love sourcing materials from my local thrift store. You can find old jackets, travel bags, suitcases, purses, pouches, wallets and belts for super cheap that you can deconstruct for materials. This is where I get all my leather and vinyl for sewing projects. The belt I used for the handles shown here was only 50¢!



STURDY FABRIC BASKET

finished size > 8" wide by 5" deep by 5" high.

