


WINDOM QUILTED BOMBER JACKET

BY KIMBERLY PAYNE
OF STRAIGHT STITCH DESIGNS





Windom QUILTED BOMBER JACKET

BY KIMBERLY PAYNE
OF STRAIGHT STITCH DESIGNS

The Windom Bomber Quilted Jacket is the perfect blend of cozy winter comfort and chic style. The design features raglan sleeves, a front zip, chunky ribbed bands and easy quilting for added texture and warmth.

Skip the quilting for a quick and easy jacket that is great for layering. Sew the Windom in comfy flannel, sporty faux leather or a wide variety of wovens, or piece the sleeve and bodice panels before quilting for a totally custom look. The pattern includes sizes 0–34.

SUPPLIES

- Main & lining fabric (amount according to chart)
- Knit fabric (ribbing preferred; amount according to chart)
- Zippers: 16" separating and two 6" all-purpose
- Interfacing
- Bias binding (optional)

PREPARE

Print out and assemble the full-size pattern PDF.

From the main and lining fabric, cut two fronts, one back and two sleeves.

From the knit fabric, cut one neckband, two front waistbands, one back waistbands, and two sleeve cuffs.

From the main fabric, cut four pockets, two front center waistbands, and two facings.

Transfer all the pattern markings.

QUILT

This jacket can be either quilted or left plain. For an unquilted jacket, skip to Construction.

Place one lining front and one main front with wrong sides together and stitch the perimeter, $\frac{1}{4}$ " from the outer edge.

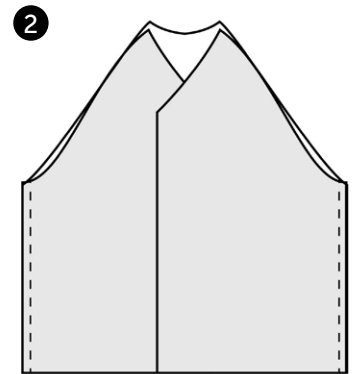
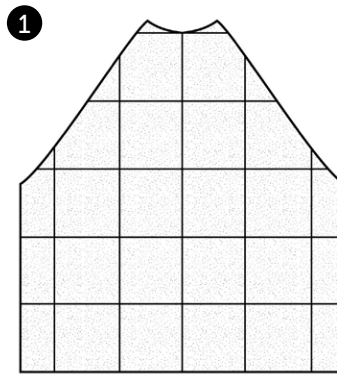
Decide on a quilting pattern. If quilting is new to you, consider a grid pattern with lines vertical and horizontal lines equally spaced. To make the pattern easier to follow, draw out the design in either a fabric pen or tailor's chalk. Using the lines as a guide, quilt the layers together. Repeat for the remaining pieces (1).

FINISHED MEASUREMENTS

Size	0	2	4	6	8	10	12	14	16
Bust/Waist/High Hip	39 $\frac{1}{4}$ "	40 $\frac{3}{4}$ "	42 $\frac{1}{4}$ "	43 $\frac{3}{4}$ "	45 $\frac{1}{4}$ "	46 $\frac{3}{4}$ "	48 $\frac{1}{4}$ "	49 $\frac{3}{4}$ "	51 $\frac{1}{4}$ "
Size	18	20	22	24	26	28	30	32	34
Bust/Waist/High Hip	52 $\frac{3}{4}$ "	54 $\frac{1}{4}$ "	56"	57 $\frac{1}{2}$ "	59"	60 $\frac{1}{2}$ "	62"	63 $\frac{1}{2}$ "	65"

FABRIC REQUIREMENTS

	Main		Lining		Knit	
	0-16	18-34	0-16	18-34	0-16	18-34
60"-wide fabric	1 $\frac{5}{8}$	2	1 $\frac{1}{2}$	1 $\frac{7}{8}$	$\frac{1}{2}$	0.5
54"-wide fabric	1 $\frac{3}{4}$	2 $\frac{1}{8}$	1 $\frac{7}{8}$	2	$\frac{1}{2}$	$\frac{3}{4}$
45"-wide fabric	2	2 $\frac{1}{2}$	1 $\frac{7}{8}$	2	$\frac{3}{4}$	$\frac{3}{4}$



CONSTRUCT

Use $\frac{5}{8}$ " seam allowances unless otherwise noted.

Treat the quilted layers as one going forward. If you're not quilting your lining and main fabric, layer the corresponding pieces with wrong sides together, stitch the perimeter, and treat as one going forward.

With right sides together sew the front and back pieces together along both side seams (2).



Fold one sleeve in half with right sides together, lining up the underarm seam, and sew together. Repeat with the remaining sleeve.

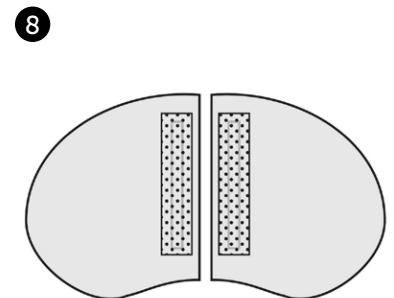
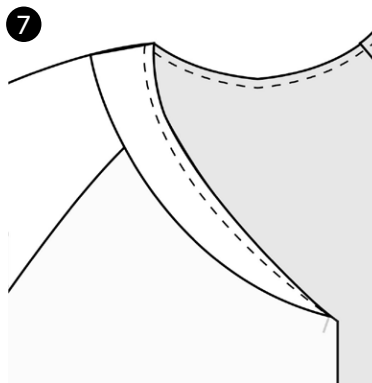
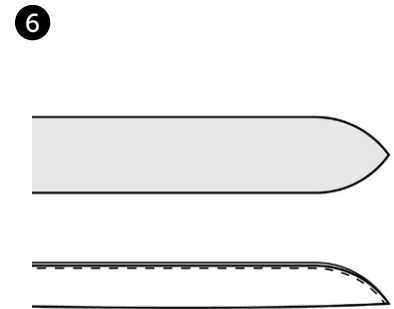
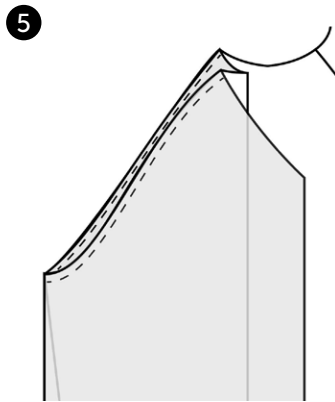
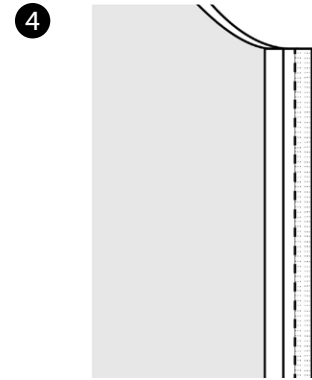
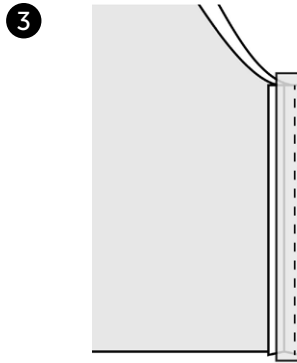
For an upscale effect, finish exposed seams with Hong Kong seams. Press the side seam allowances open. Fold the body of the jacket away from one side of the seam allowance. Place the bias tape with right sides towards the right side of the seam allowance. Stitch the bias tape to the seam allowance with $\frac{1}{4}$ " seam allowance (3).

Press the bias tape away from the seam allowance. Fold the bias tape toward the wrong side of the seam allowance, covering the stitching line from the previous step; press in place. Working from the right side of the seam allowance, stitch in the ditch, catching the raw edge of the bias tape in the back (4). Note: The raw edge on the wrong side of the seam allowance is left unfinished to reduce bulk. Finish each side of the seam allowance in this way. Repeat for the remaining side seam and underarm sleeves.

tip As an alternative to Hong Kong seams, serge the raw edges of each quilted pattern piece before assembling the jacket. Press the seams open.

With the jacket wrong side out and the sleeves right sides out, place the sleeve inside the jacket. Line up the underarm seam and the front and back shoulder points. Stitch the sleeve to the jacket (5). Repeat for the remaining sleeve and finish the seams with the Hong Kong method.

Fold the neckband in half with wrong sides together, lining up the curved edge. Baste the raw edge together along the curved edge (6).



Find the center point of the neckband and match with the jacket center back. Pin the neckband to the jacket neckline, stretching slightly to fit; stitch in place (7). Finish the neckband seams with Hong Kong binding or serge-finish.

To create the welt pockets, mark the rectangle with either chalk or a fabric pen on the wrong side of two mirrored pocket pieces and the wrong side of the jacket fronts.

Cut out a piece of interfacing that is slightly larger than the rectangle and fuse to the wrong side, covering the rectangle (8).

With the right side of the pocket piece facing the wrong side of the jacket front, line up the rectangle on the jacket front with that of the pocket. Stitch along the outer edge of the rectangle through both the pocket and jacket front.

Cut down the middle of the stitched rectangle to 1" from both ends, cutting through both the jacket and pocket. From that point, clip into but not through the corners on both ends of the rectangle (9).

Push the seam allowance toward the jacket wrong side and press open. To get a crisp zipper edge, press well.

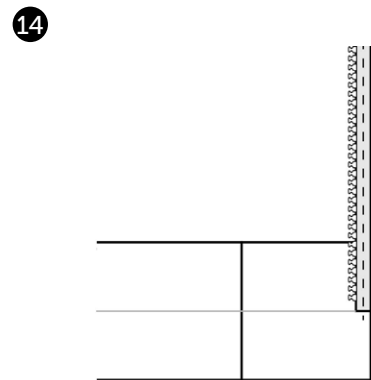
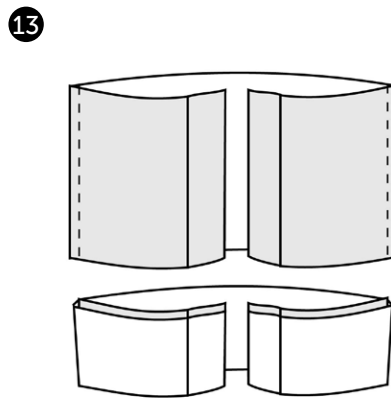
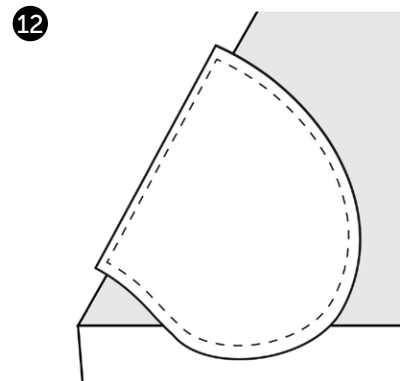
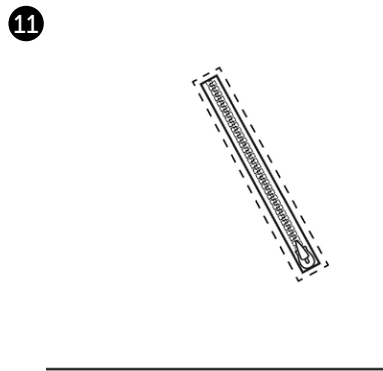
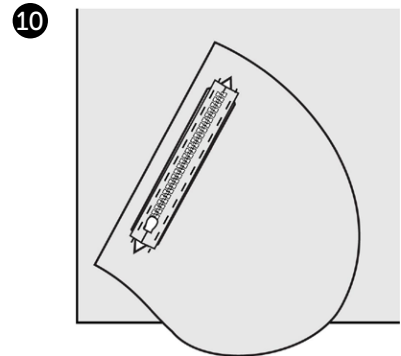
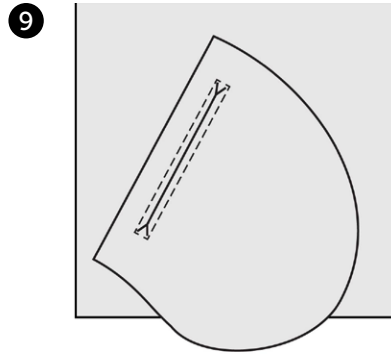
Place the zipper right sides down on the wrong side of the pocket in the rectangle opening. Consider basting the zipper in place with either a basting stitch or using a glue stick (10). Working from the jacket right side, sew the zipper in place 1/8" from the inside folded edge (11). If the zipper is longer than the opening, wait to trim it down until after sewing the zipper in place.

Working from the jacket wrong side, place the corresponding pocket piece with wrong sides together. Pulling the jacket front out of the way, stitch the two pocket pieces together around the outer edge, and finish with binding or serging (12). Repeat for the second zipper pocket.

Align the center front waistband and front waistband with right sides together; stitch. Repeat in mirror image for the other side of the waistband. With right sides together, align the front waistband pieces from the previous step on the back waistband at the side seams; stitch. Fold the waistband in half, with wrong sides together, and press well (13). This pressing line will be used to properly place the zipper.

With right sides together, place the waistband along the lower edge of the jacket. Line up the side seams, center front, and center back. Stitch the waistband to the jacket along the lower edge.

Open the zipper and separate the two sides. Place the jacket right side up. With the zipper wrong side up,

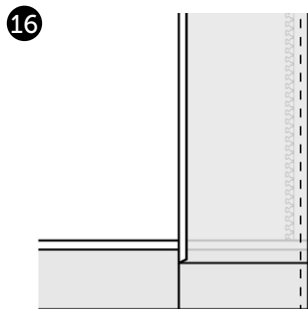


line up the zipper tape with the center front edge. The bottom of the zipper will line up with the pressing line from the previous step. Change to a zipper foot and baste the zipper in place (14).

Fold the waistband toward the jacket right side and press. Then fold the raw edge 1/4" towards the waistband wrong side and press well (15).



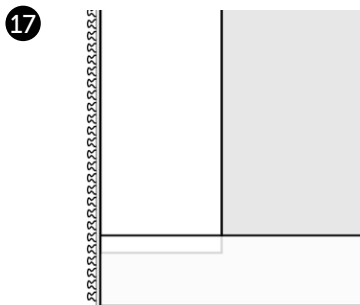
Fold and press the long facing edge $\frac{1}{4}$ " to the wrong side. With right sides together, place the facing piece along the center front and pin in place. Align the top of the facing with the neckline and continue pinning down the center front. The facing lower edge will extend past the waistband; it will be tucked in on the next step. The zipper, neckband, and waistband are now sandwiched between the jacket and facing. Sew the facing to the jacket $\frac{3}{8}$ " from the inside edge **(16)**. Clip the corner at the front neckline and bottom hem to reduce bulk when turning right side out.



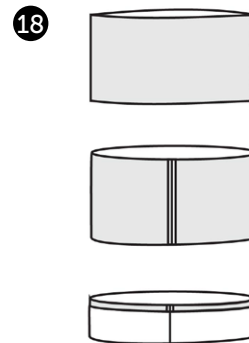
Flip the facing and waistband towards the wrong side, maintaining the folded edges. Tuck the facing into the waistband and press all edges well **(17)**. Repeat to finish the opposite front side.

From the jacket right side, topstitch the facings in place along the folded edge.

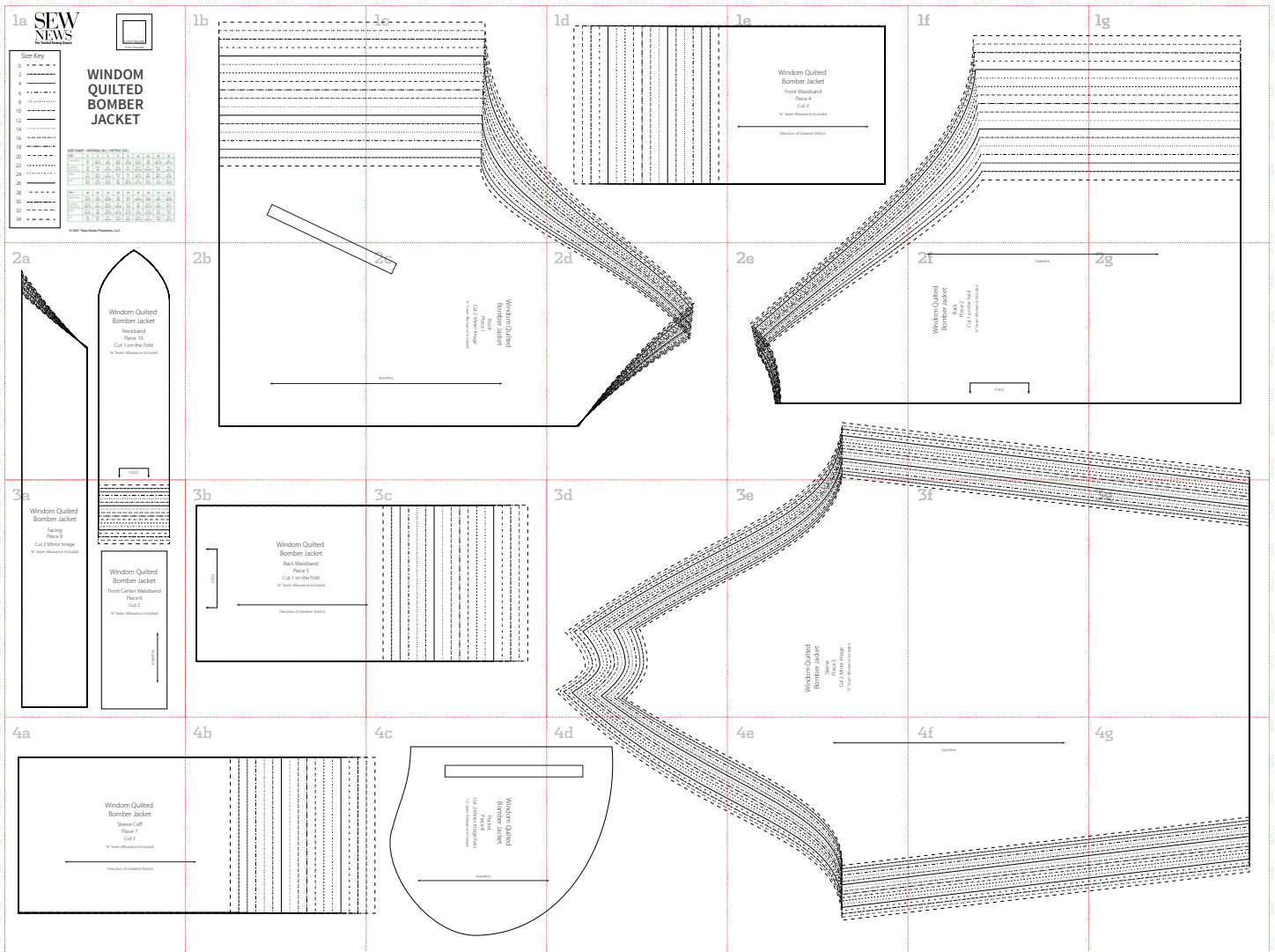
Stitch in the ditch of the waistband seam from the jacket right side, catching the folded waistband edge in the stitching line.



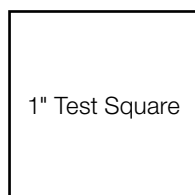
With right sides together, stitch the short ends of the sleeve cuffs together, forming a tube. Fold the tube over in half with the wrong sides together, making sure to match up the seam **(18)**. With the sleeve right sides out, slip the sleeve cuff over the sleeve end, matching up the raw edges. Stitch in place, stretching slightly to fit. Serge-finish or bind the seam allowance. Repeat to attach the second sleeve cuff. **(S)**



WINDOM QUILTED BOMBER JACKET

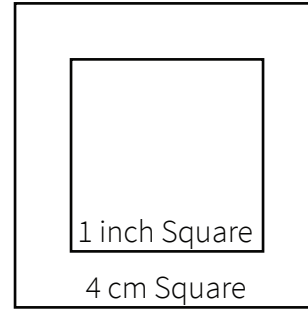


Template overview



28 pages: 1a–1g; 2a–2g; 3a–3g; 4a–4g

Print this page first at 100%, then measure the 1" test square before printing the full pattern.



Size Key

- 0 - - - - -
- 2 - - - - -
- 4 - - - - -
- 6 - - - - -
- 8 - - - - -
- 10 - - - - -
- 12 - - - - -
- 14 - - - - -
- 16 - - - - -
- 18 - - - - -
- 20 - - - - -
- 22 - - - - -
- 24 - - - - -
- 26 - - - - -
- 28 - - - - -
- 30 - - - - -
- 32 - - - - -
- 34 - - - - -

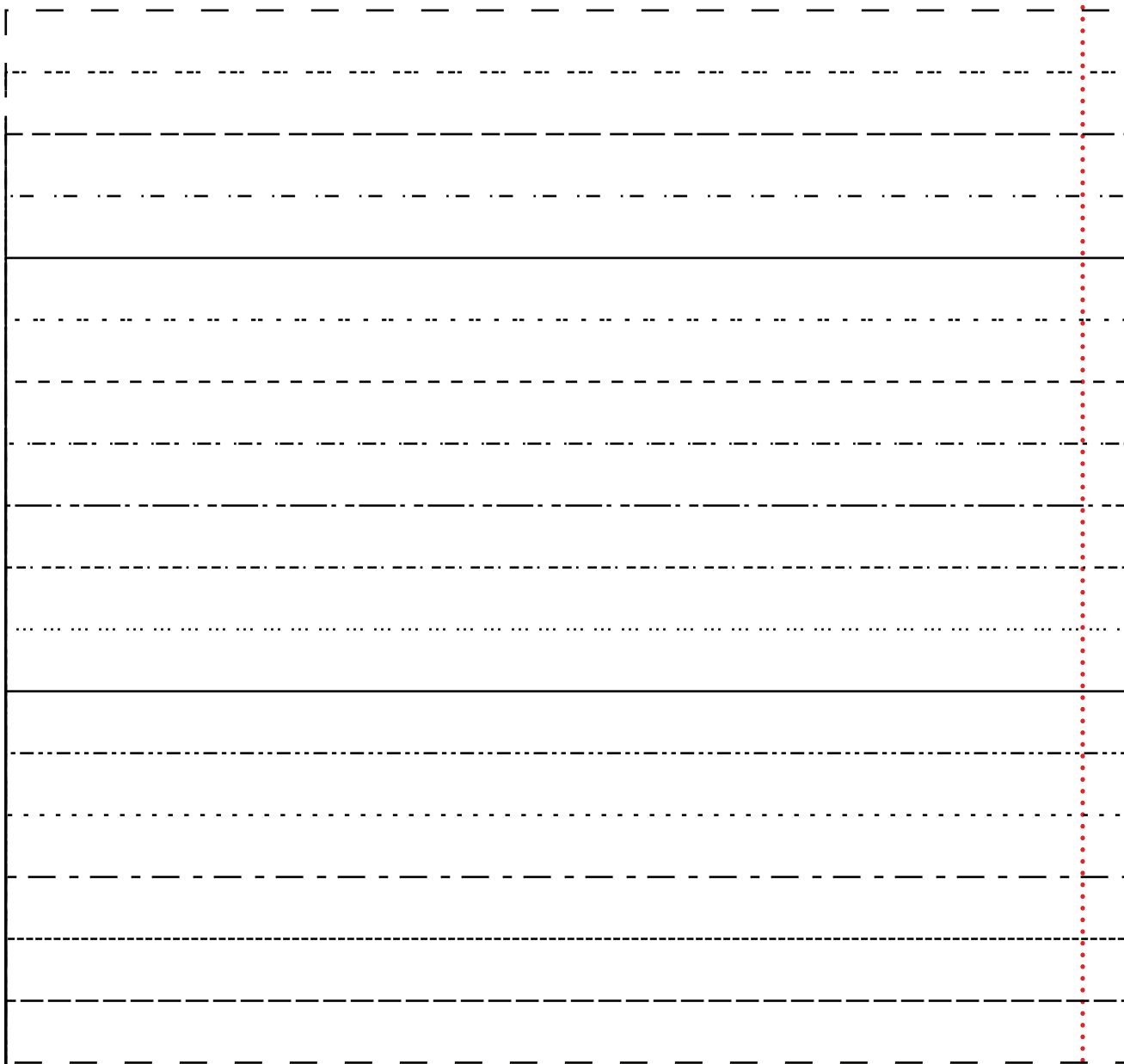
WINDOM QUILTED BOMBER JACKET

SIZE CHART - IMPERIAL (IN.) / METRIC (CM.)

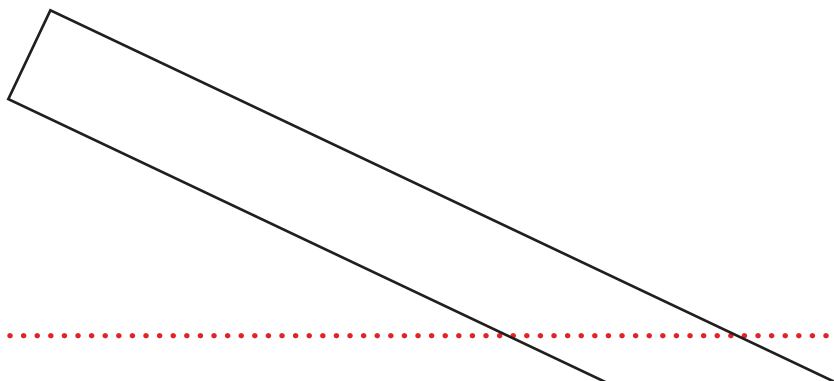
Size	0	2	4	6	8	10	12	14	16
Upper Bust	30/ 77	31.5/ 80.75	33/ 84.5	34.5/ 88.5	36/ 92.25	37.5/ 96.25	39/ 100	40.5/ 103.75	42/ 107.75
Full Bust B Cup Size	32/ 82	33.5/ 86	35/ 89.75	36.5/ 93.75	38/ 97.5	39.5/ 101.25	41/ 105.25	42.5/ 109	44/ 112.75
Waist	24/ 61.5	25.5/ 65.5	27/ 69.25	28.5/ 73	30/ 77	31.5/ 80.75	33/ 84.5	34.5/ 88.5	36/ 92.25
Hip	34.5/ 88.5	36/ 92.25	37.5/ 96.25	39/ 100	40.5/ 103.75	42/ 107.75	43.5/ 111.5	45/ 115.5	46.5/ 119.25

Size	18	20	22	24	26	28	30	32	34
Upper Bust	43.5/ 111.5	45/ 115.5	46.5/ 119.25	48/ 123	49.5/ 127	51/ 130.75	52.5/ 134.5	54/ 138.5	55.5/ 142.25
Full Bust B Cup Size	45.5/ 116.75	47/ 120.5	48.5/ 124.25	50/ 128.25	51.5/ 132	53/ 136	54.5/ 139.75	56/ 143.5	57.5/ 147.5
Waist	37.5/ 96.25	39/ 100	40.5/ 103.75	42/ 107.75	43.5/ 111.5	45/ 115.5	46.5/ 119.25	48/ 123	49.5/ 127
Hip	48/ 123	49.5/ 127	51/ 130.75	52.5/ 134.5	54/ 138.5	55.5/ 142.25	57/ 146.25	58.5/ 150	60/ 153.75

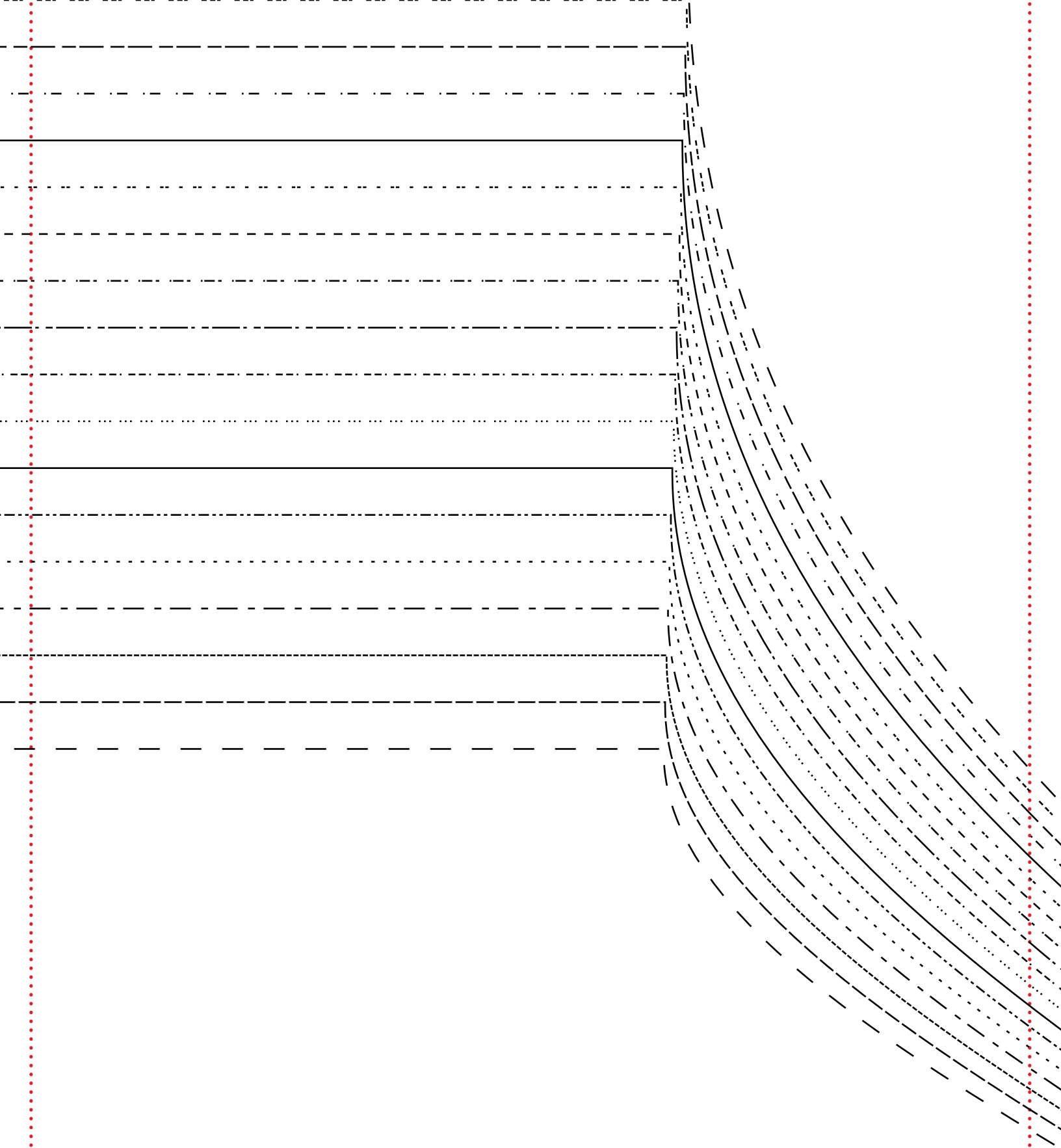
1b



Handwriting practice lines consisting of four sets of horizontal lines. Each set includes a solid top line, a dashed midline, and a solid bottom line. The sets are separated by solid horizontal lines.



1c



1e

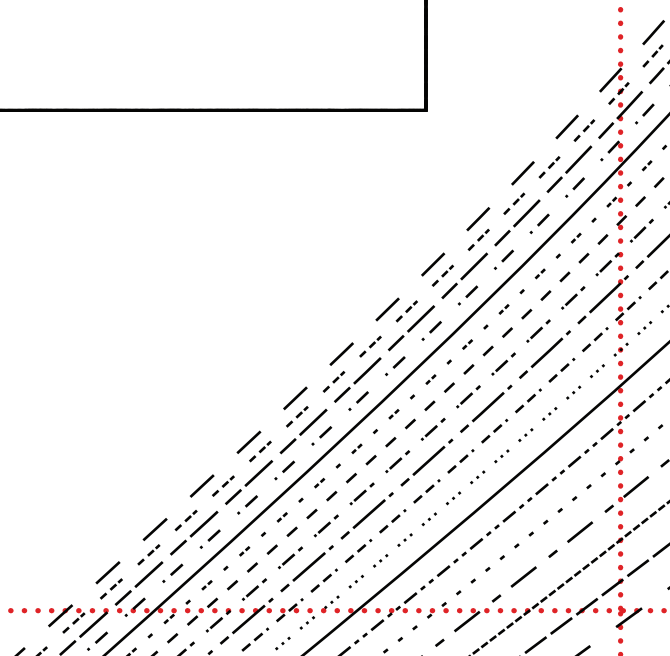
Windom Quilted
Bomber Jacket

Front Waistband
Piece 4
Cut 2

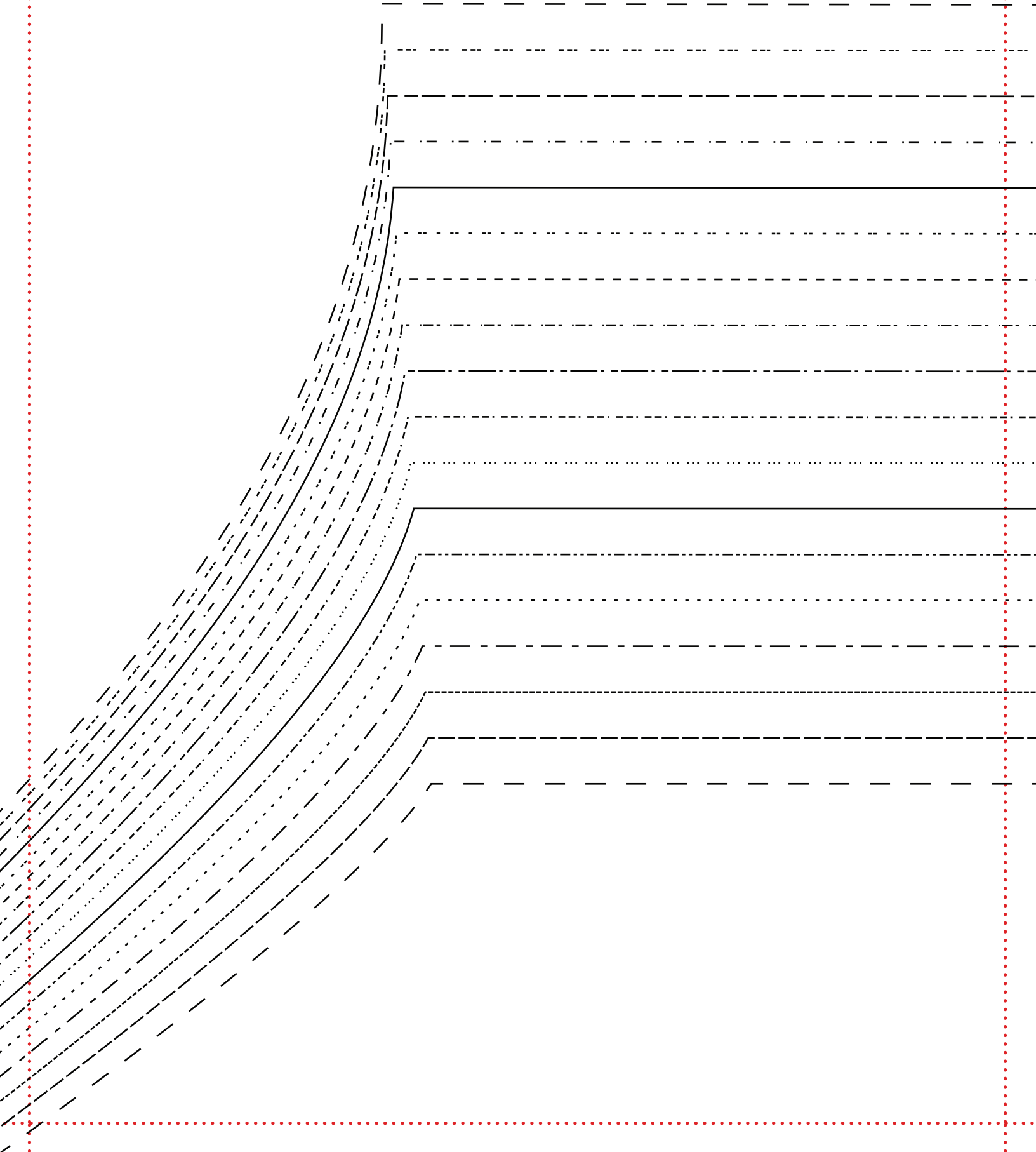
$\frac{5}{8}$ " Seam Allowance Included



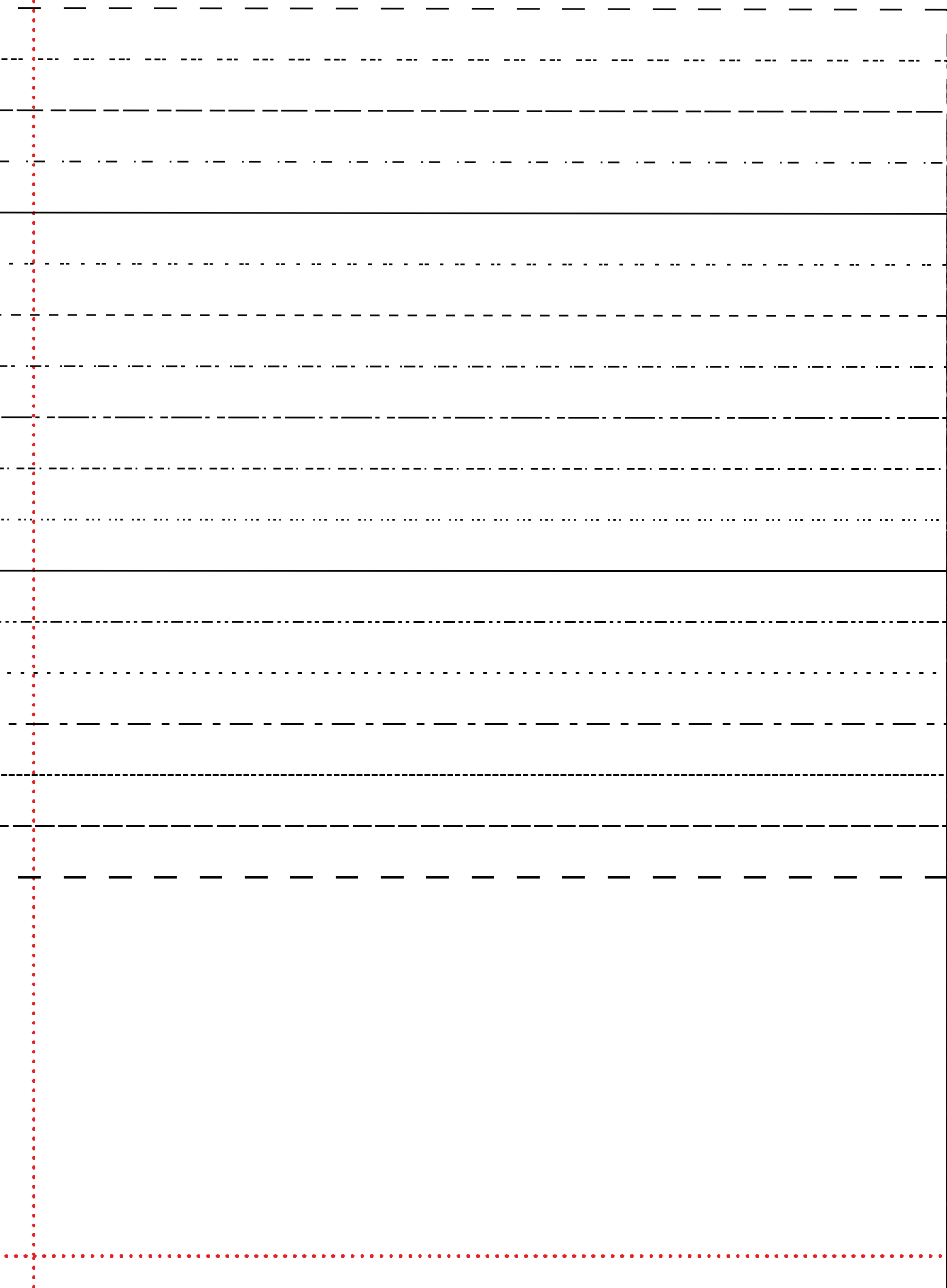
Direction of Greatest Stretch



1f

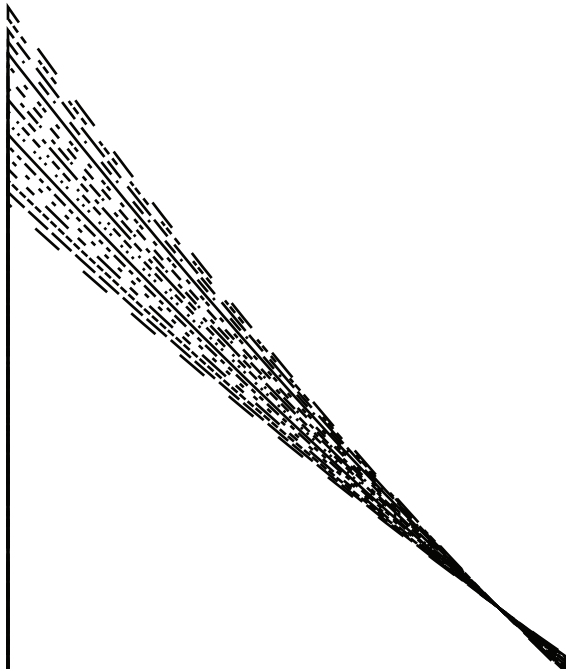


lg



A series of horizontal lines for handwriting practice. Each row consists of a solid top line, a dashed middle line, and a solid bottom line. There are ten such rows on the page.

2a



Windom Quilted
Bomber Jacket

Neckband

Piece 10

Cut 1 on the Fold

$\frac{5}{8}$ " Seam Allowance Included



2b



Windom Quilted
Bomber Jacket


Front
Piece 1

Cut 2 Mirror Image

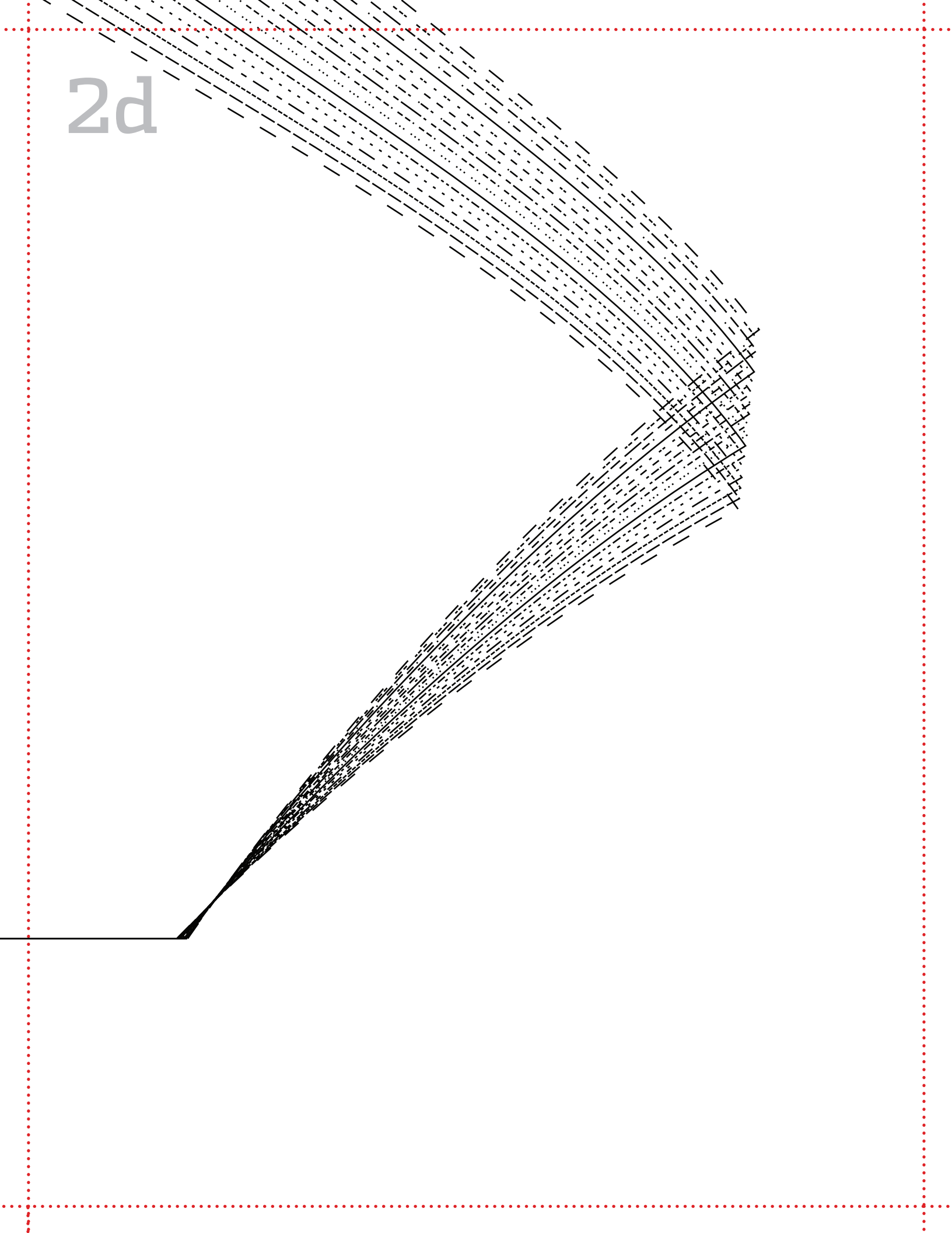
5/8" Seam Allowance Included

2c

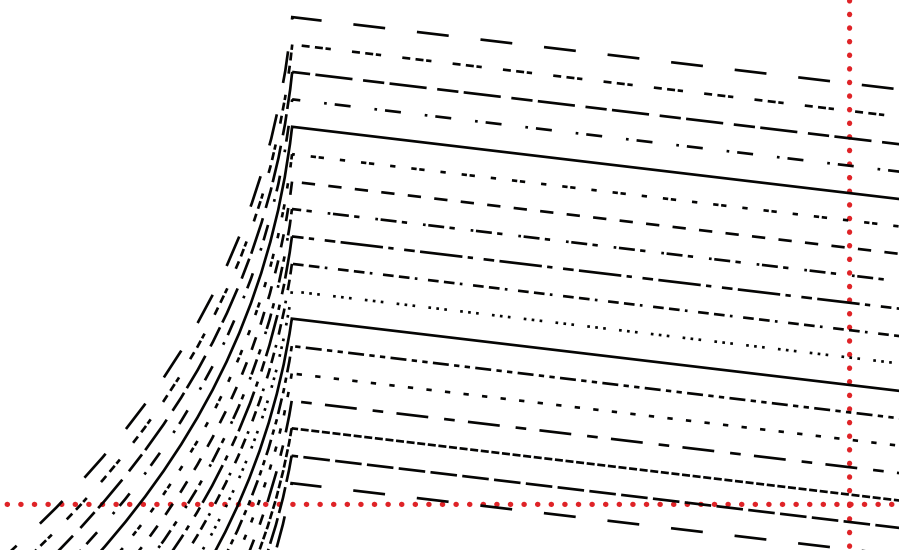
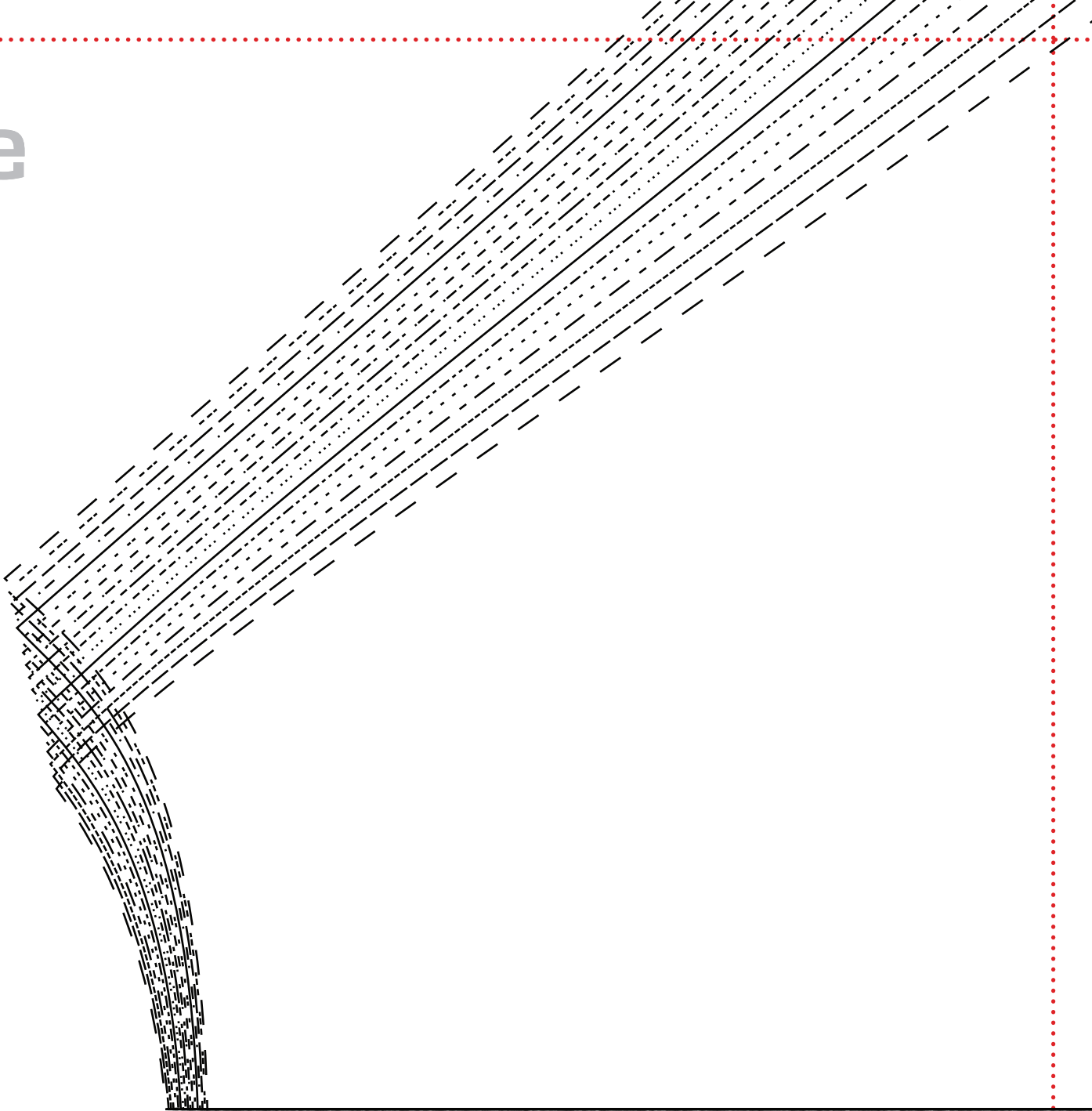
Grainline

A horizontal arrow pointing to the right, indicating the grainline direction for the fabric piece.

2d



2e

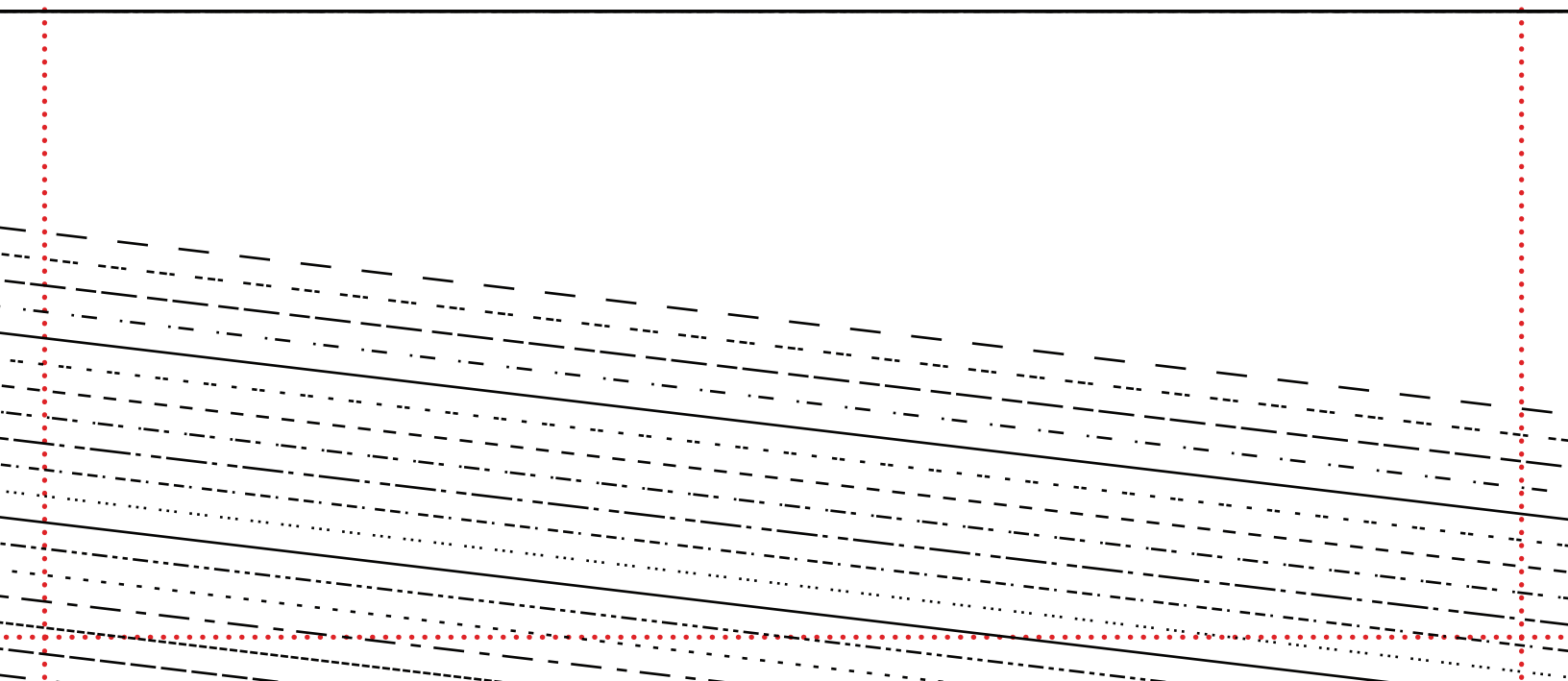


2f

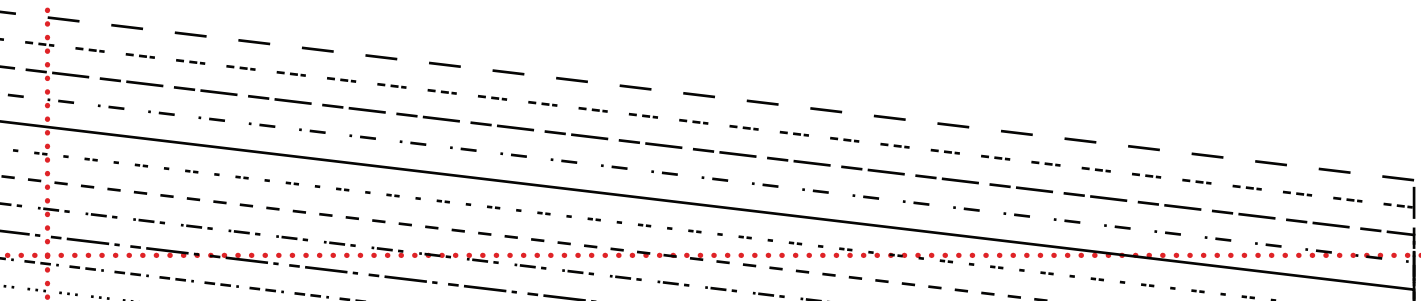
Grainline

Windom Quilted
Bomber Jacket

Back
Piece 2
Cut 1 on the Fold
5/8" Seam Allowance Included



2g



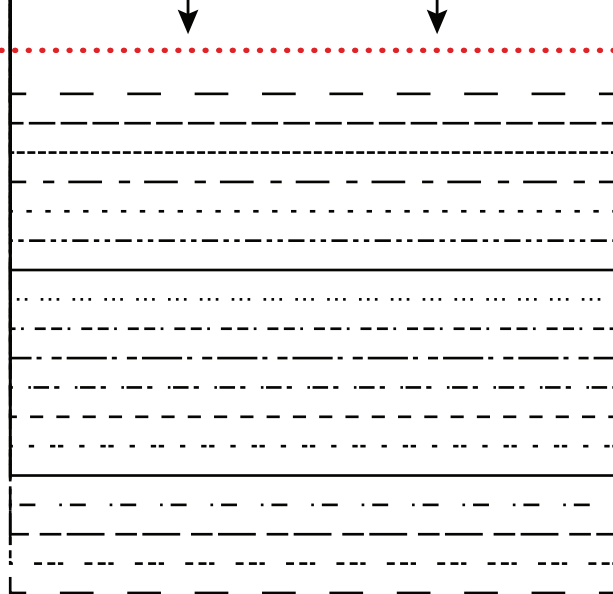
3a

Windom Quilted
Bomber Jacket

Facing
Piece 9

Cut 2 Mirror Image

$\frac{5}{8}$ " Seam Allowance Included

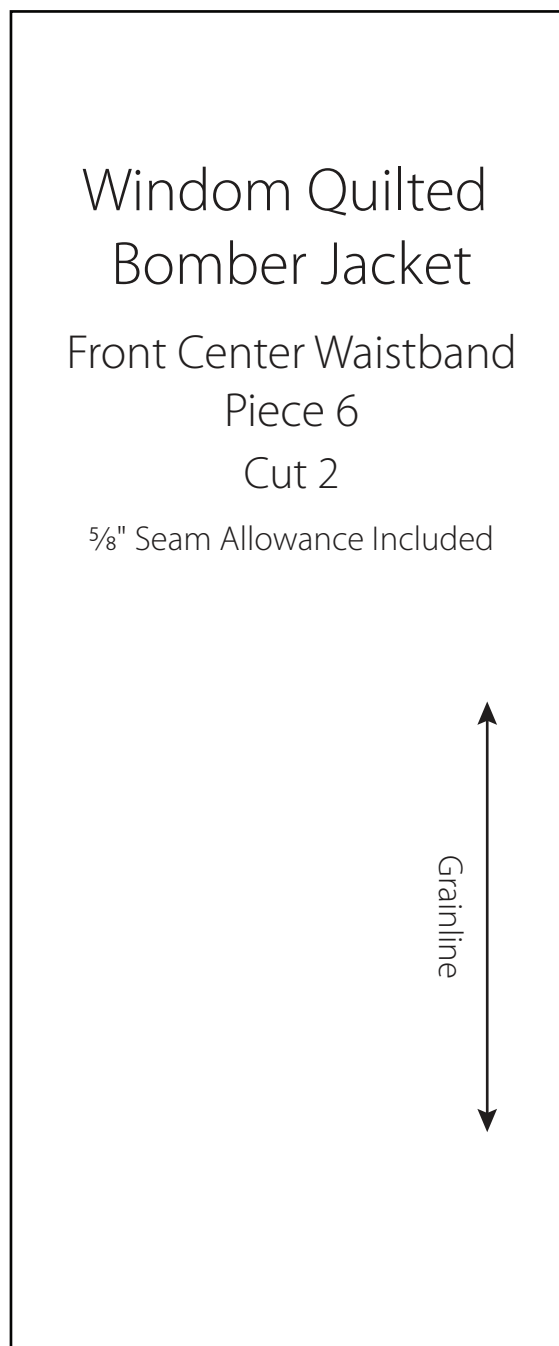


Windom Quilted
Bomber Jacket

Front Center Waistband
Piece 6

Cut 2

$\frac{5}{8}$ " Seam Allowance Included



3b

Windom Quilted Bomber Jacket

Back Waistband
Piece 5

Cut 1 on the Fold

$\frac{5}{8}$ " Seam Allowance Included

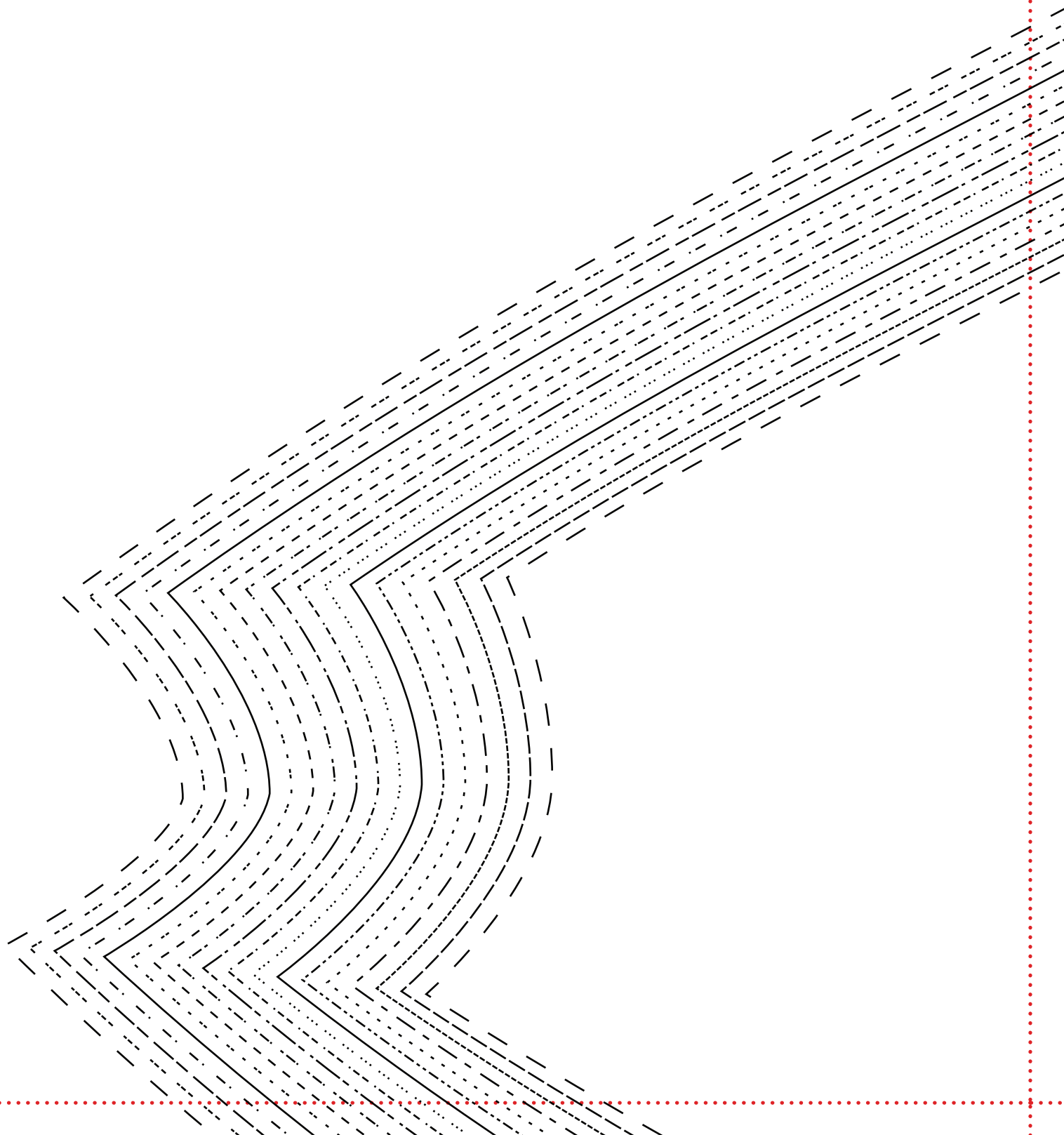


Direction of Greatest Stretch

3c

A handwriting practice grid consisting of three columns. Each column contains multiple rows of lines. The first column has a solid top line, a dashed midline, and a solid bottom line. The second column has a solid top line, a dotted midline, and a solid bottom line. The third column has a solid top line, a dashed midline, and a solid bottom line. A red dotted border surrounds the entire page. A small black arrow points to the left on the left side of the grid.

3d



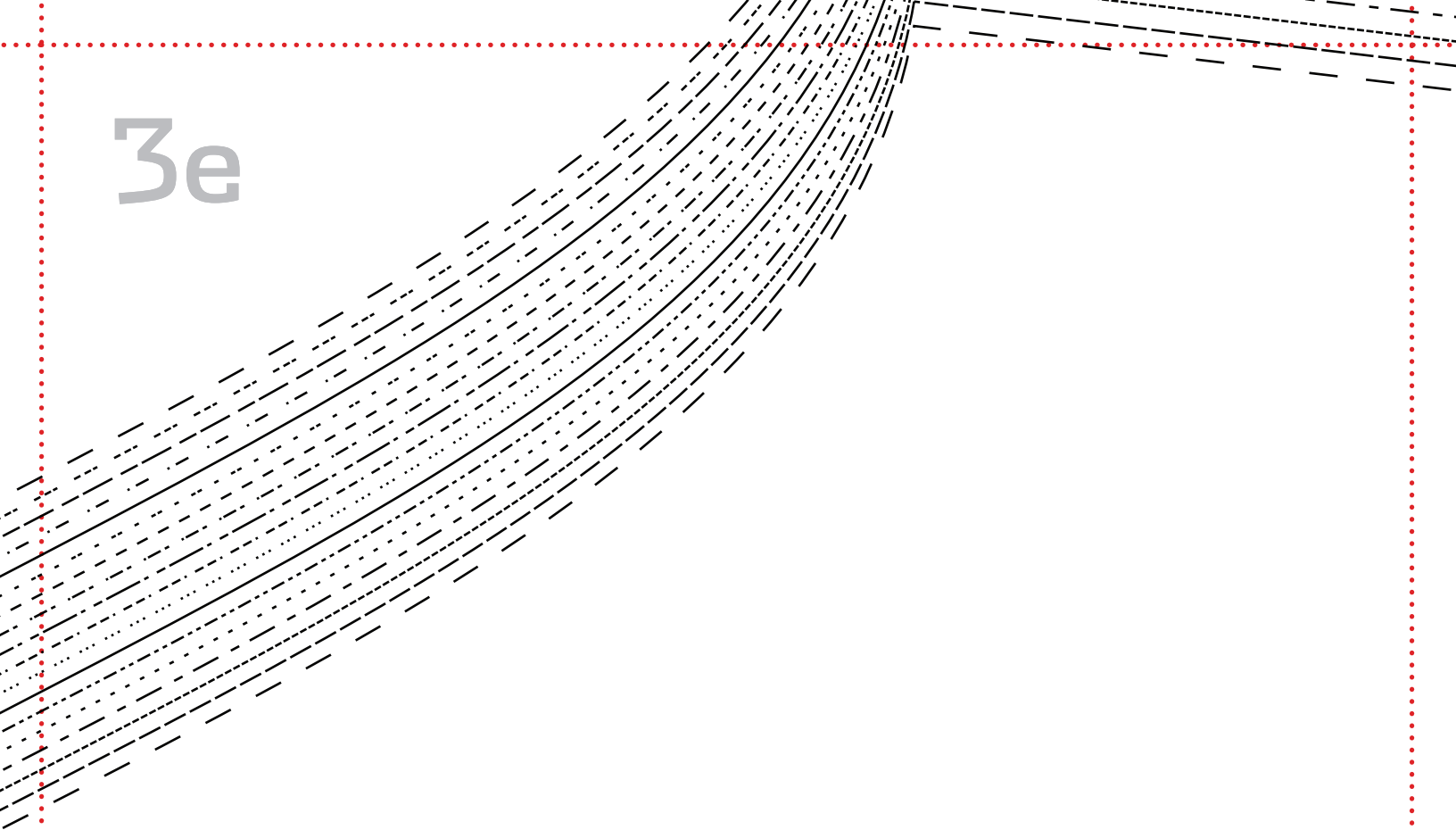
3e

Windom Quilted
Bomber Jacket

Sleeve
Piece 3

Cut 2 Mirror Image

$\frac{5}{8}$ " Seam Allowance Included



3f

3g

4a

Windom Quilted
Bomber Jacket

Sleeve Cuff

Piece 7

Cut 2

$\frac{5}{8}$ " Seam Allowance Included



Direction of Greatest Stretch

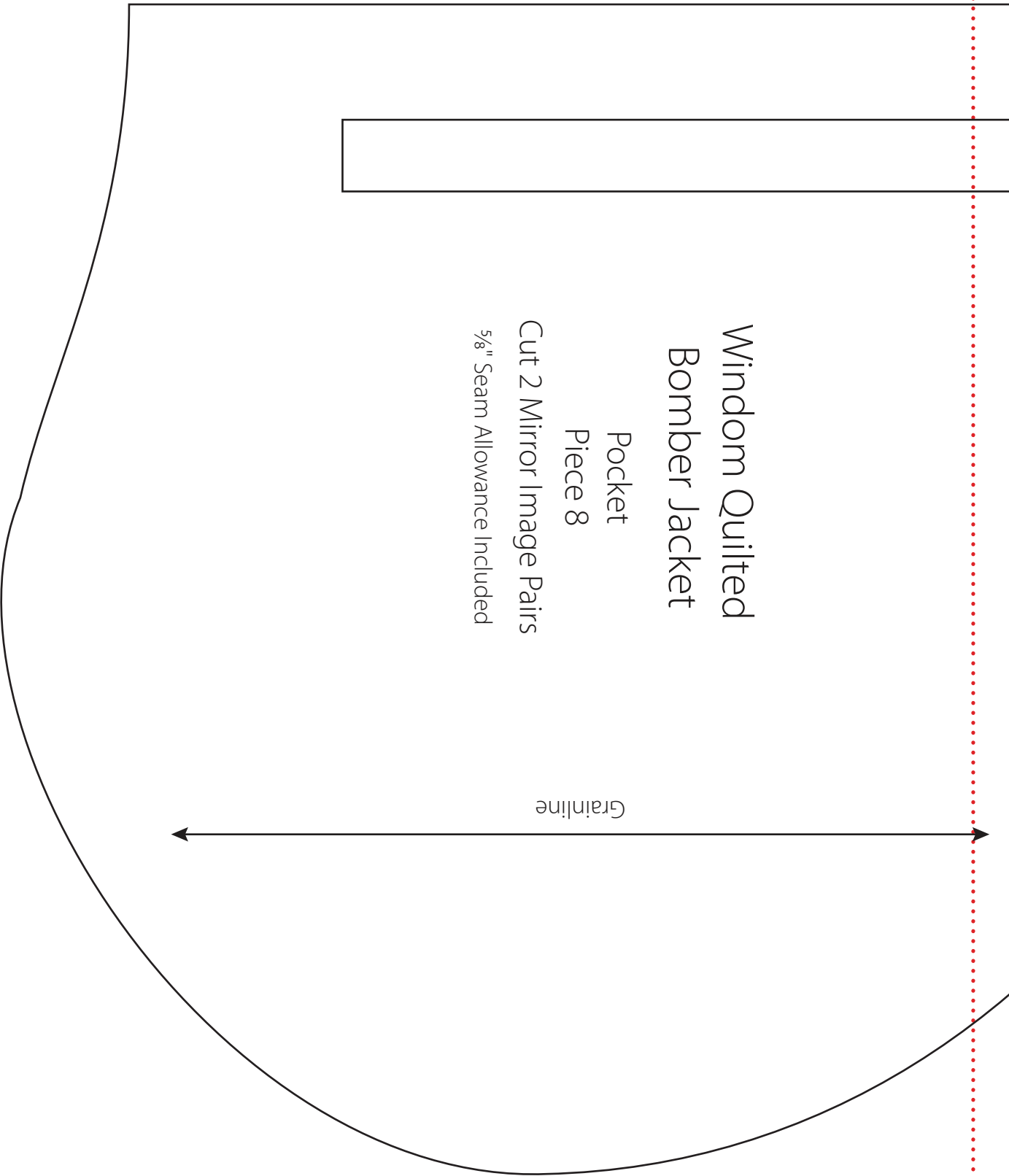
4c

Windom Quilted
Bomber Jacket

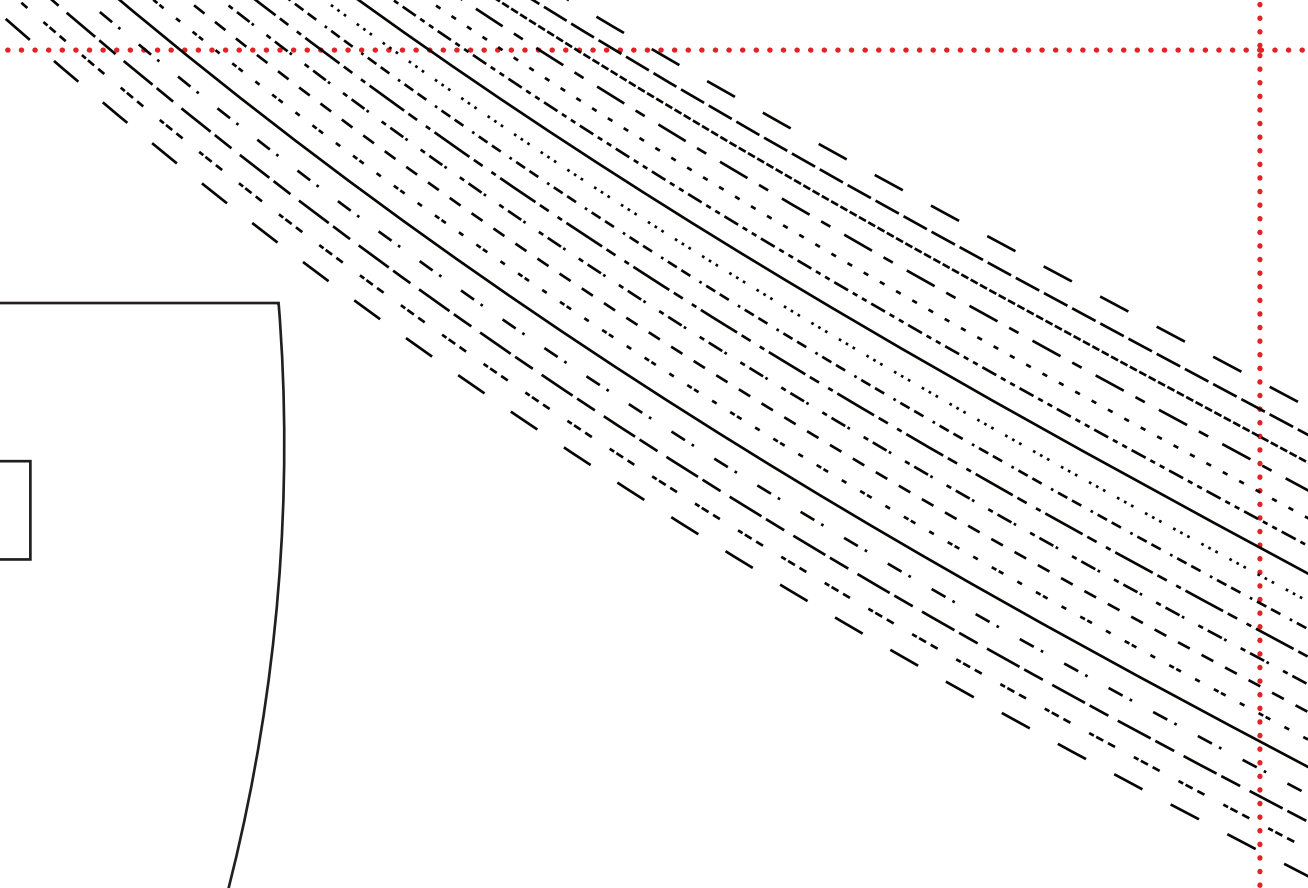
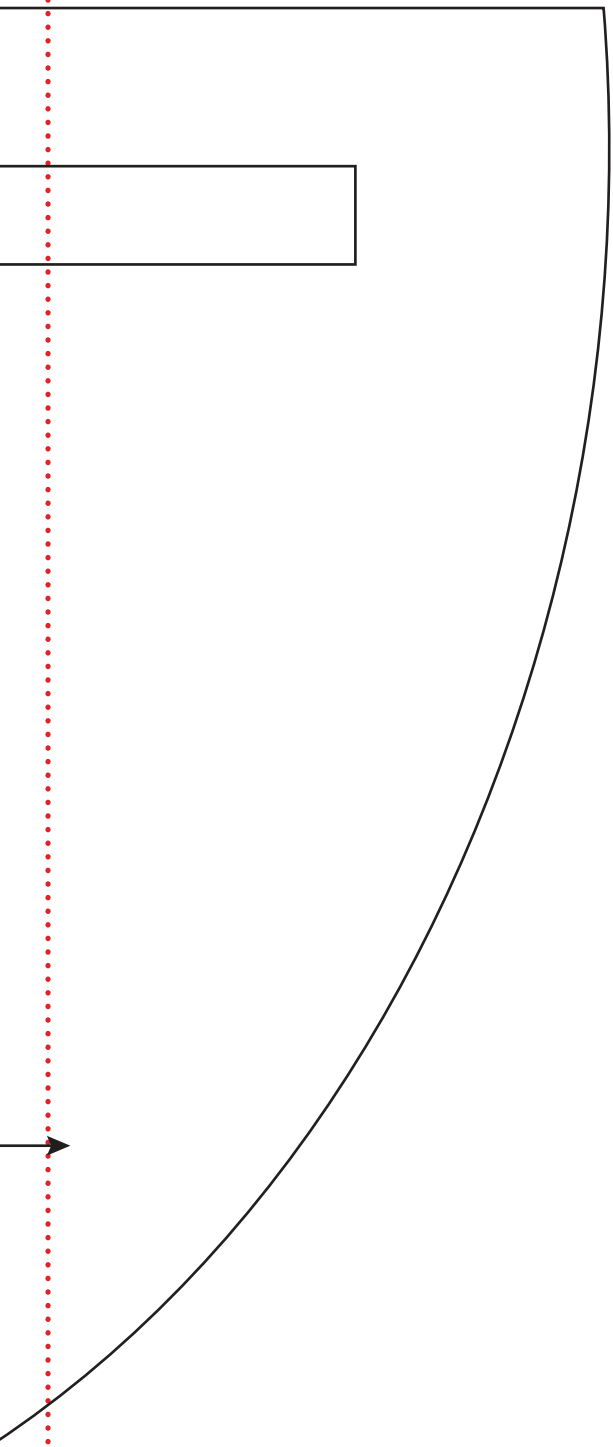
Pocket
Piece 8

Cut 2 Mirror Image Pairs
 $\frac{5}{8}$ " Seam Allowance Included

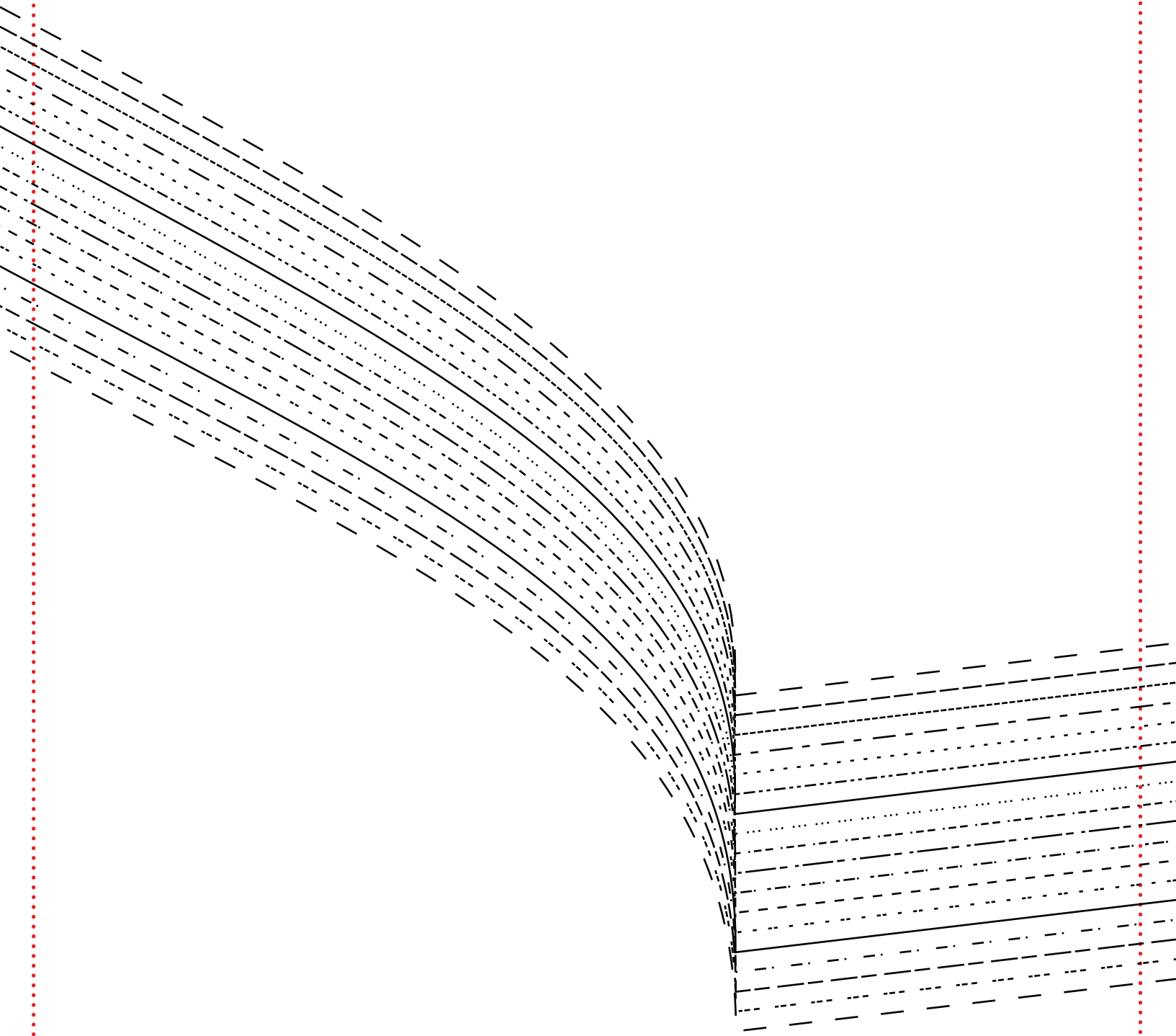
Grainline



4d

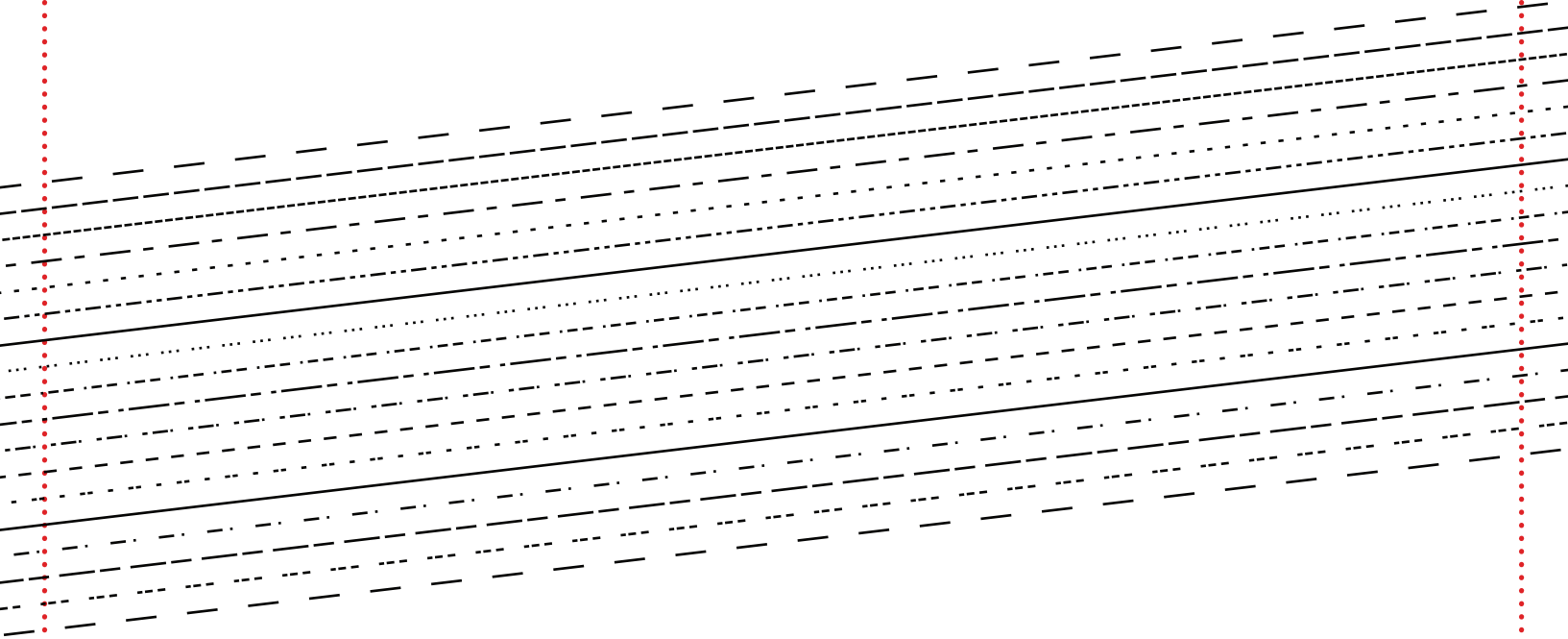


4e



4f

Grainline



4g

