

We love  
**STYLE**



MY HANDMADE  
WARDROBE

Freya and Sarah co-own Crafty Sew & So, a Leicester-based fabric shop and sewing studio. They launched their pattern range, My Handmade Wardrobe Patterns, in 2017 and design modern sewing patterns that everyone can sew. Visit [www.craftysewandso.com](http://www.craftysewandso.com) for more!



*Keyhole neckline*  
**JERSEY DRESS**

Sew a stylish 1930s-inspired dress brought up to date in comfortable jersey fabric

Project **FREYA GILBERT & SARAH WADEY**  
from **Crafty Sew & So** [www.craftysewandso.com](http://www.craftysewandso.com)



### LAYPLAN:



## Shopping list

Matt Elastic Jersey in Mellow Mauve,  
£6 per half metre  
[www.craftysewandso.com](http://www.craftysewandso.com)

### MATERIALS & TOOLS:

- 2.5m of 150cm-/60"-wide medium-weight stretch knit fabric
- 3m packet of clear elastic
- 25cm Fusible Knit Interfacing Vilene H609
- Pattern downloaded from [www.craftworld.com/cms/love-sewing](http://www.craftworld.com/cms/love-sewing)

### NOTES:

All seam allowances are 1.5cm unless stated otherwise.

We recommend using an overlocker or stretch stitch or narrow zigzag stitch to construct using a sewing machine.

All fabrics are placed right sides together before sewing unless stated otherwise.

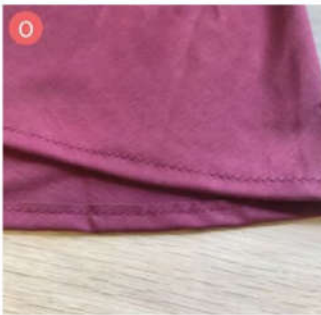
### HOW TO MAKE

- 1 Apply stretch interfacing to one set of neck bindings and front and back waistband.
- 2 Join the front bodice panels at the CF seam stitching up from the waistline to dot. Snip into seam allowance at dot. (See pics A & B.)
- 3 Press seam allowance open and inside at centre front and keyhole opening. Top stitch keyhole opening with straight stitch. (See pics C & D.)
- 4 Join the two backs and press seam open, stay stitch the front and back neckline edges, just within seam allowance, approximately 1.3cm from raw edge.

### SIZE CHART:

Size	1	2	3	4	5	6	7	8
Bust	82	87	92	97	102	107	114	126
Waist	66	71	76	81	87	93	99	109
Hip	90	95	100	105	110	115	120	130





(See Pic E.)

**5** Apply elastic to back shoulder seam raw edges to reinforce. Join front to back at the shoulder seams.

**6** Stitch gathering stitches on sleeve head. Lay front and back out right way up so that armhole is flat. Pin sleeve into armhole RST, gathering top sleeve head section to fit between notches. Sew sleeve into armhole.

**7** Join one set of interfaced back neck bindings at CB seam. Repeat for second non interfaced set. (See Pic F.)

**8** Join each set of front and back neck bands at side neck seams. With RST, join the two sets of neck bindings at the top smaller neck opening edge. Snip V shapes into seam allowance to reduce bulk, turn the right way out and press flat. (See pics G & H.)

**9** On the non-interfaced neck band pieces, snip into curved seam allowance and press in seam allowance on larger outside raw edge of neck binding. (See Pic I.)

**10** Starting at a shoulder seam, attach non-folded edge of neck binding to INSIDE of bodice neckline with right side of binding to wrong side of bodice. Pin in place with folded edge covering joining stitches. Top stitch lower edge

of neckband to secure layers together. Remove basting. (See pics J & K.)

**11** Join front and back at side seams. Join front and back waistband at side seams.

**12** Apply elastic to inside raw edge of top and bottom edges of waistband, just outside of seam allowance approximately 1.2mm from raw edge. (See Pic L.)

**13** Stitch gathering stitches between notches at lower bodice edge and back panel. Gather front bodice to fit between notches. Pin rest of lower bodice edge to top of waistband, easing curves together. (See Pic M.)

**14** Repeat for back bodice and waistband. Once pinned, sew bodice to waistband.

**15** Press seam allowances toward waistband. Finish with top stitching close to joining seam. (See Pic N.)

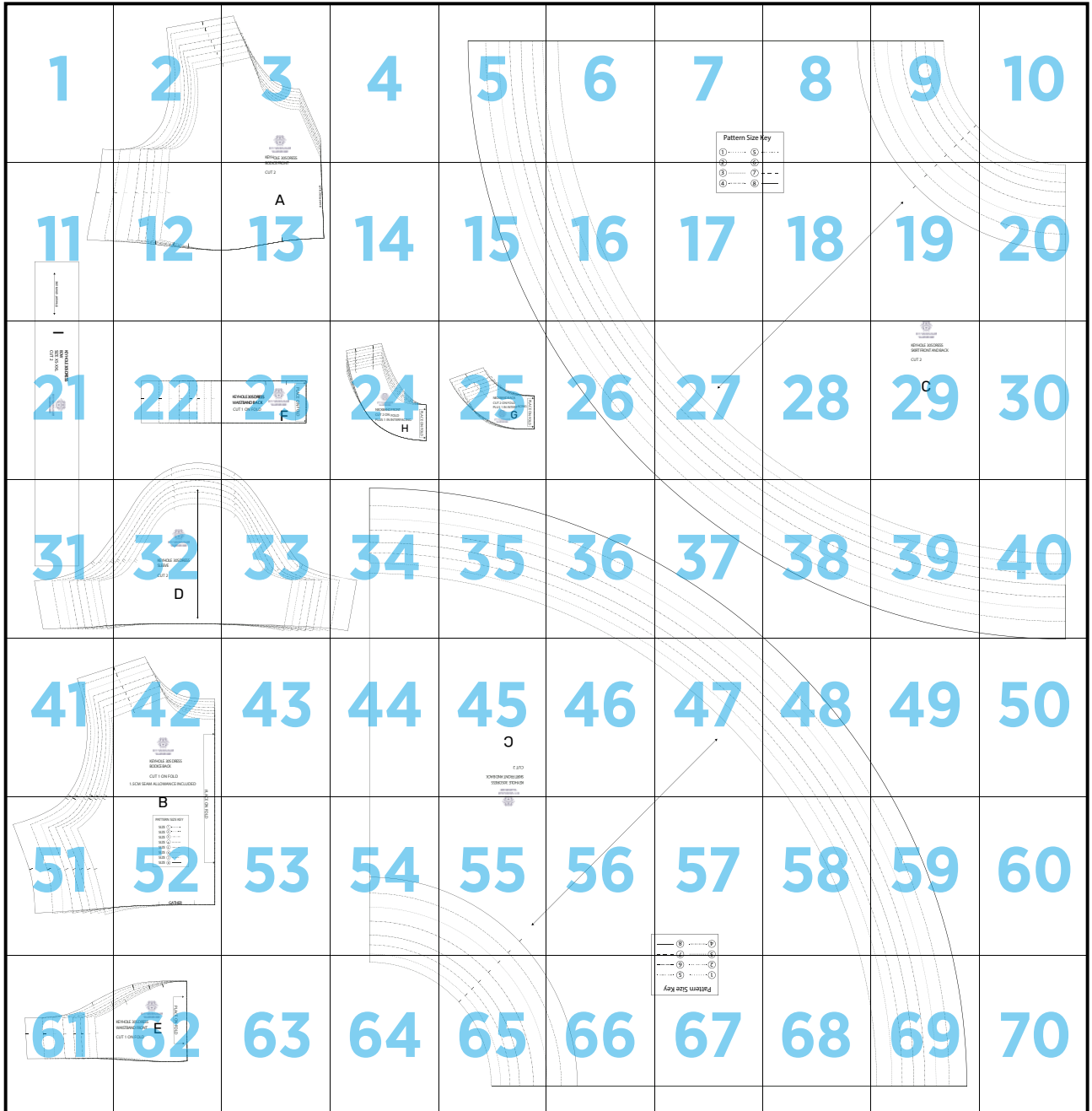
**16** Join skirt panels at side seams. Stay stitch around top edge of skirt waist, approximately 1.2cm from raw edge. Stitch skirt to lower waistband edge.

**17** To hem skirt & sleeves, press a 1cm hem to inside and topstitch. (See Pic O.)

**18** To make the bow, join the two pieces to make one longer strip. Stitch around edge starting at one short end, pivoting at corner and stitching to centre before leaving a gap for turning and continuing to the other end. Turn right way out, poke corners out and hand sew opening closed. Stitch to dress at CF of the neck band and tie a bow to finish.

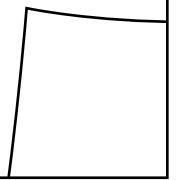


# Jersey Dress

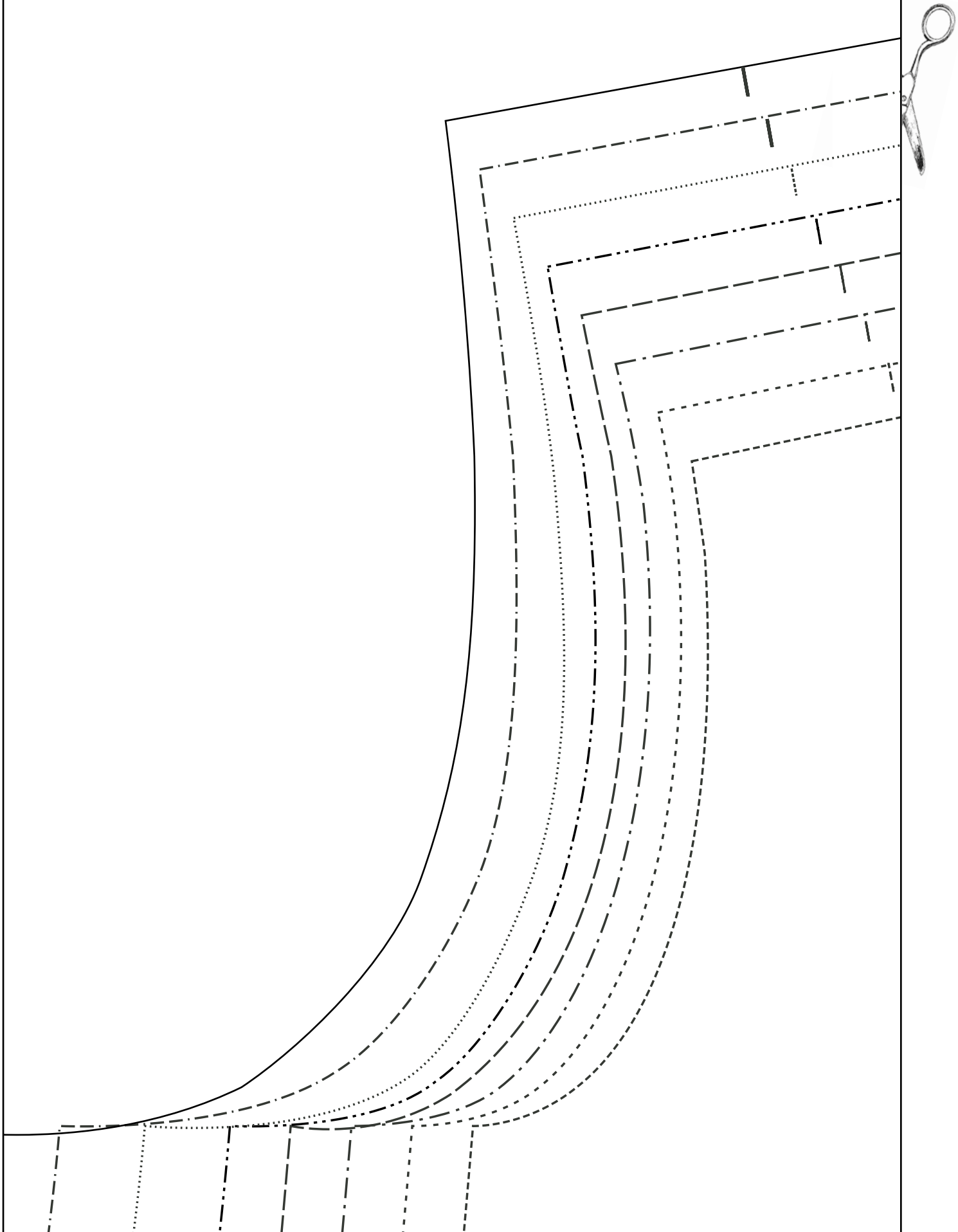




1

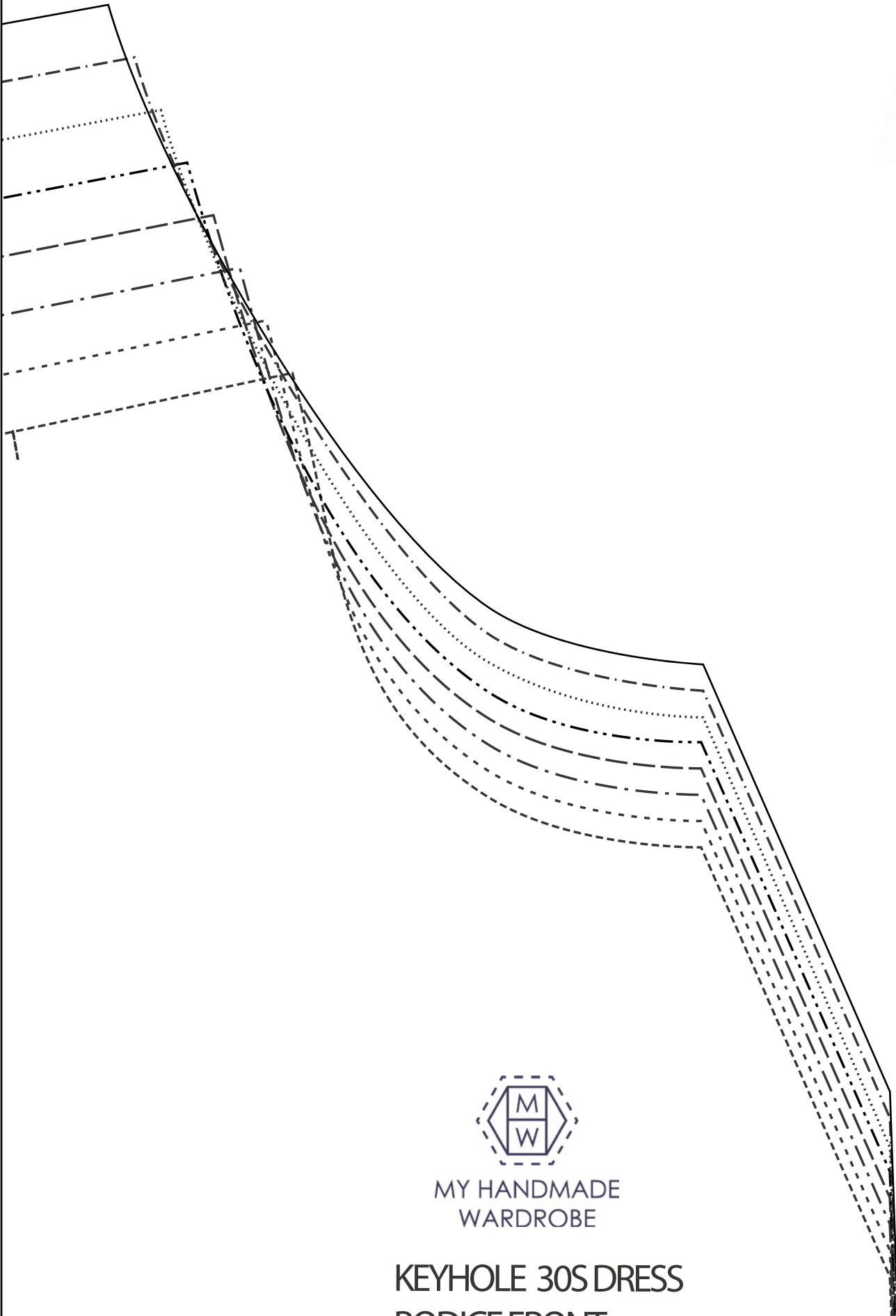


2





3



MY HANDMADE  
WARDROBE

KEYHOLE 30S DRESS

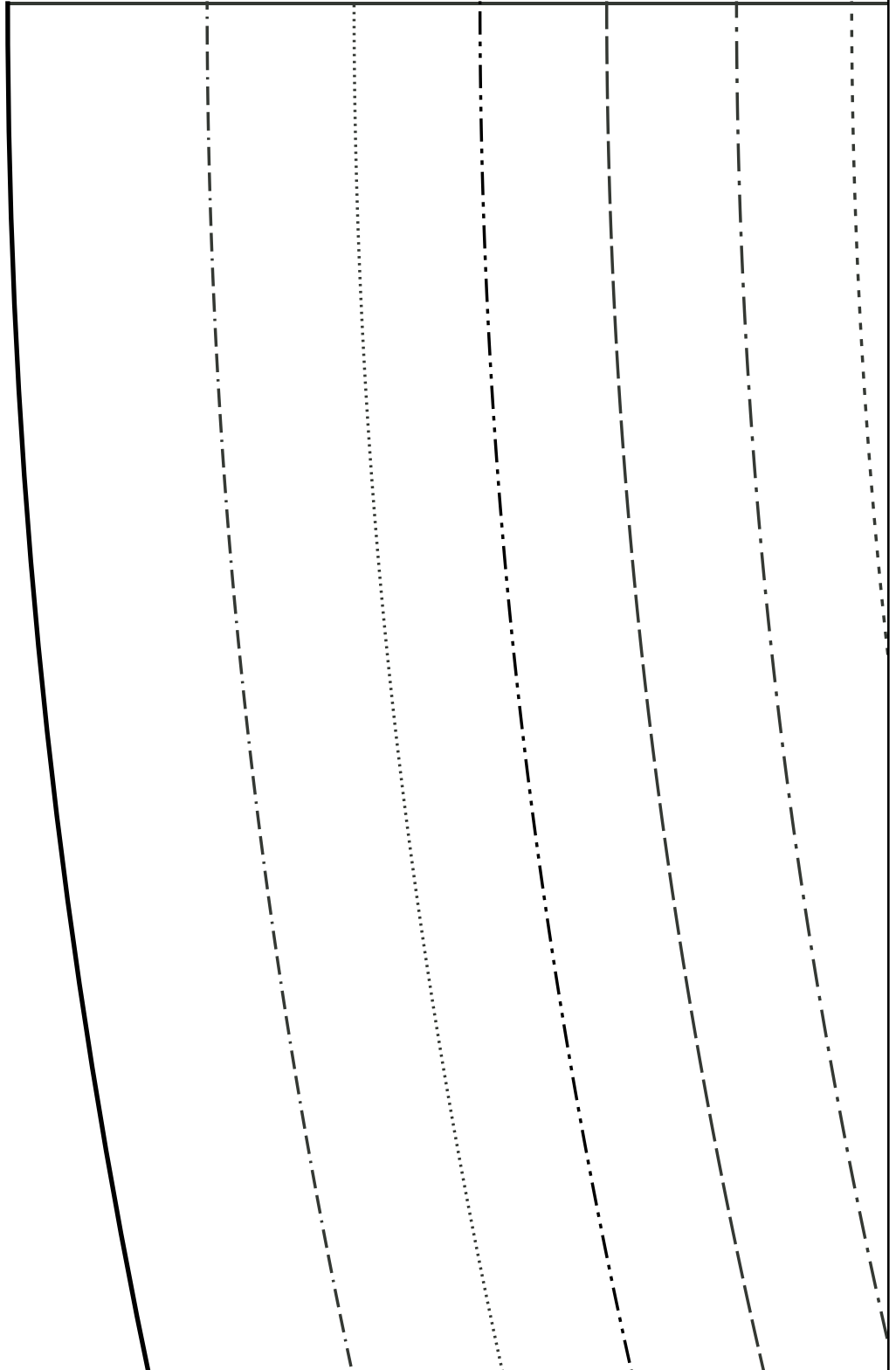
BODICE FRONT

4

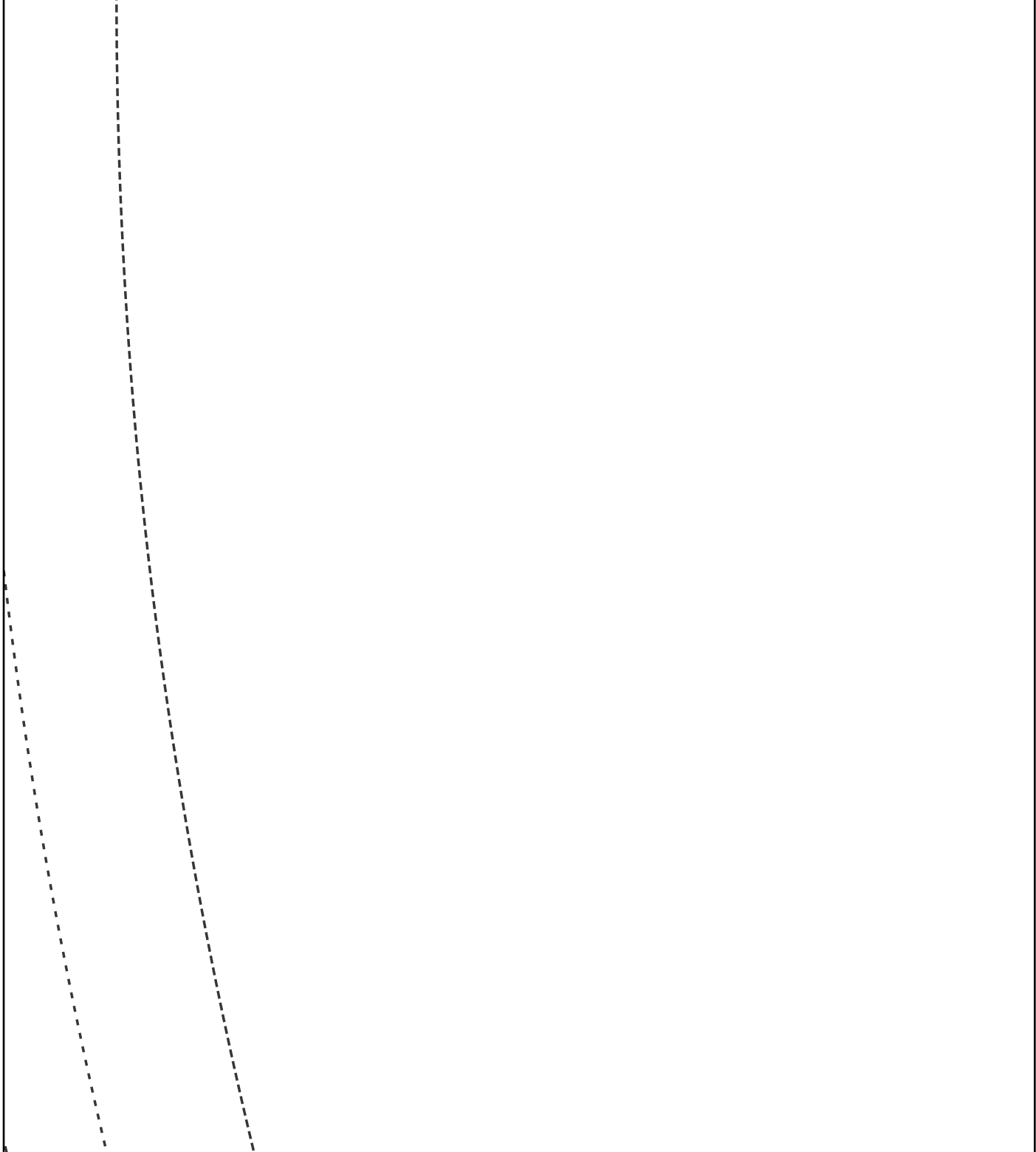




5



6





7



Pattern Size K

① ..... ⑤ .

② ..... ⑥ .

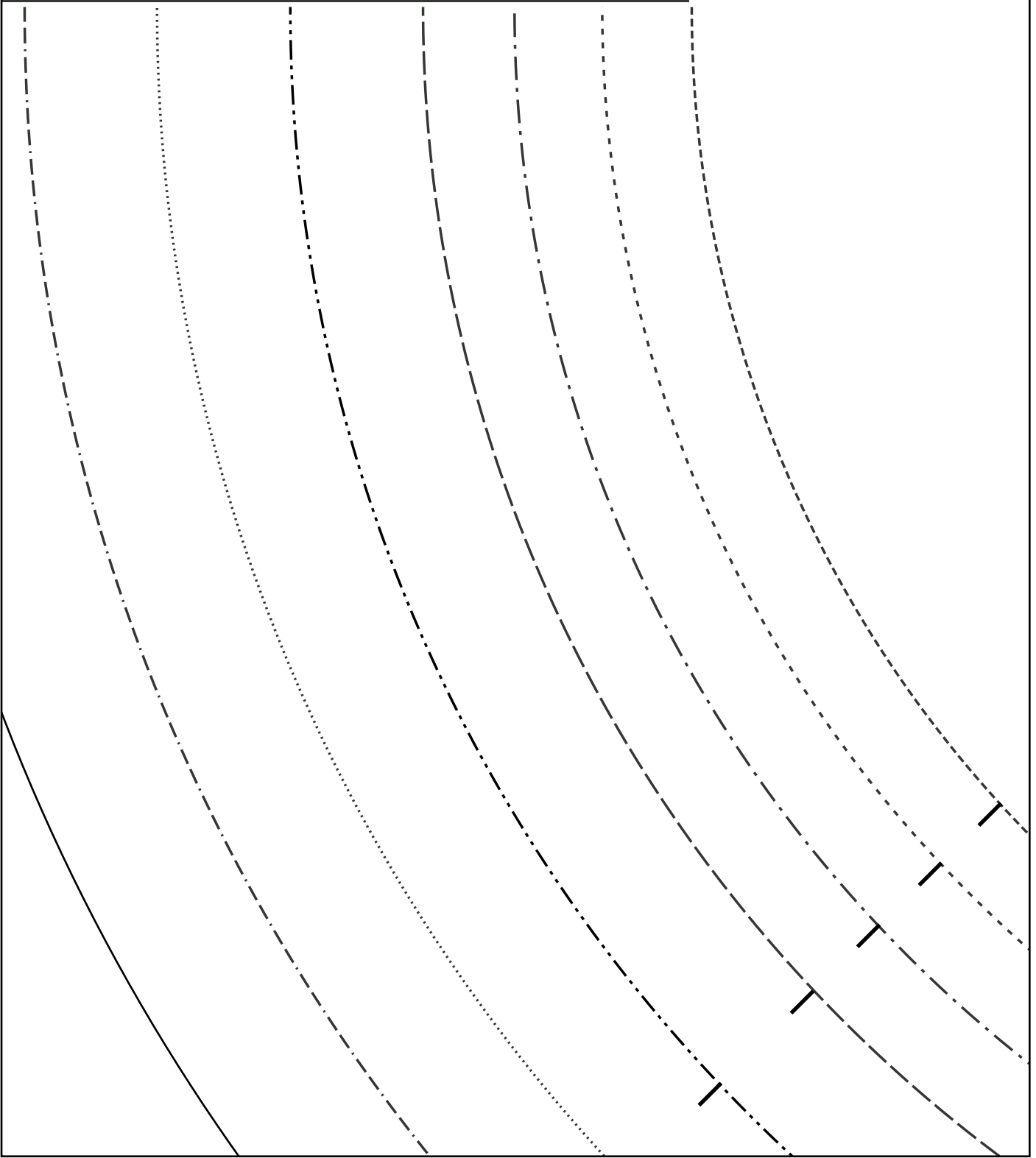
8



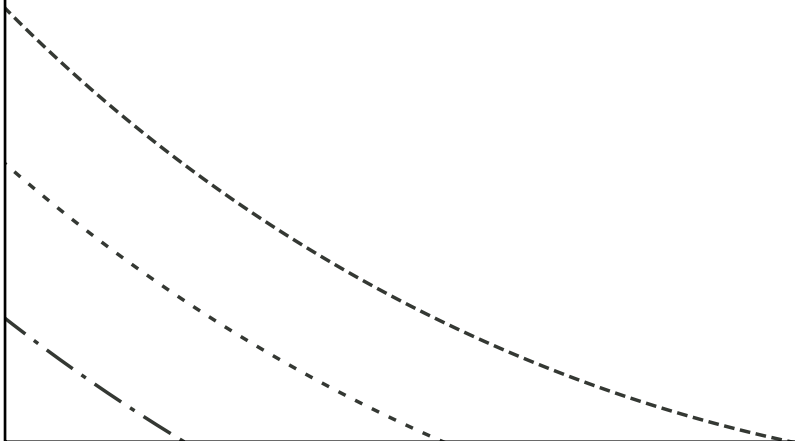
Key

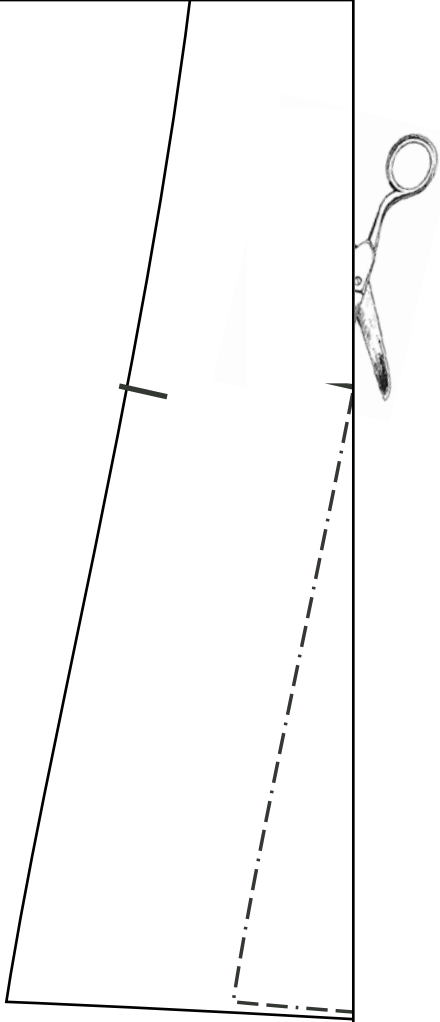
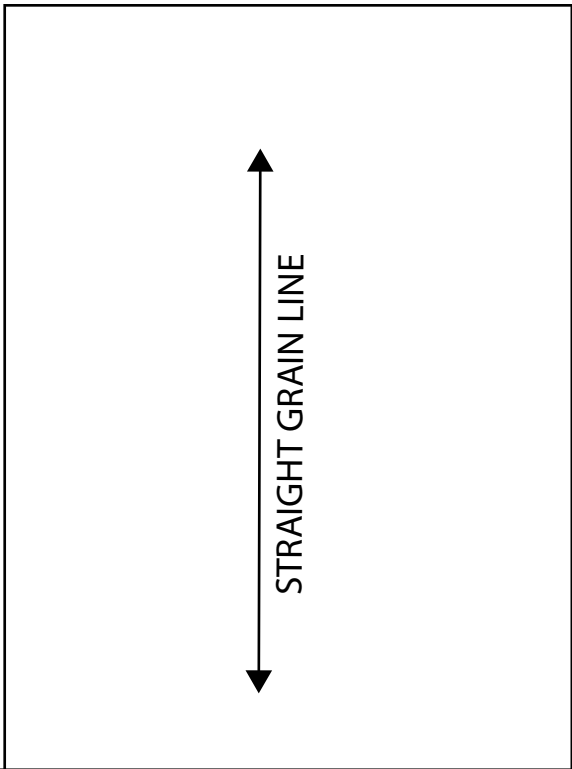
-----

9



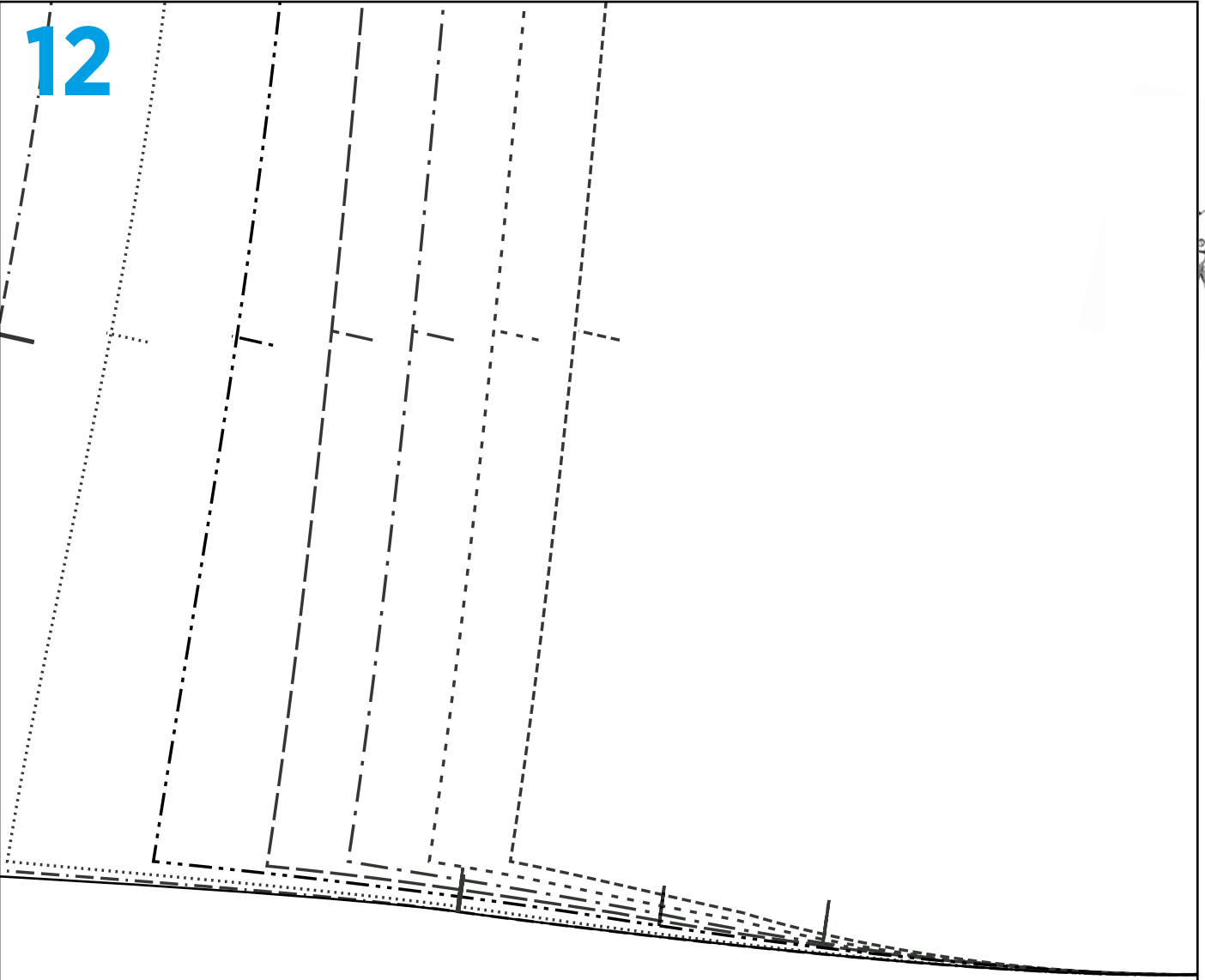
10







12



13

BODICE FRONT

CUT 2

A

CENTRE FRONT SEAM

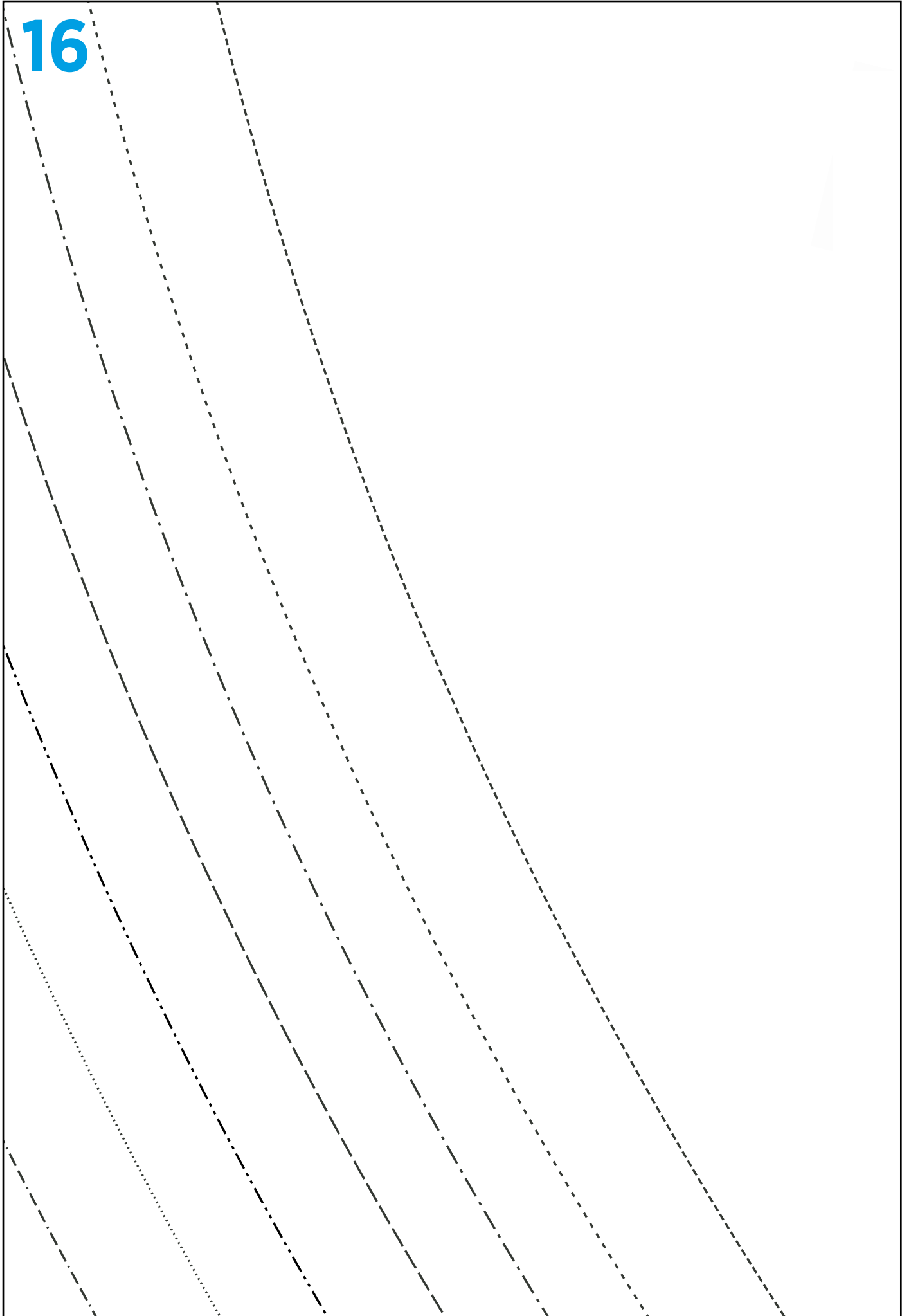




15




16





17

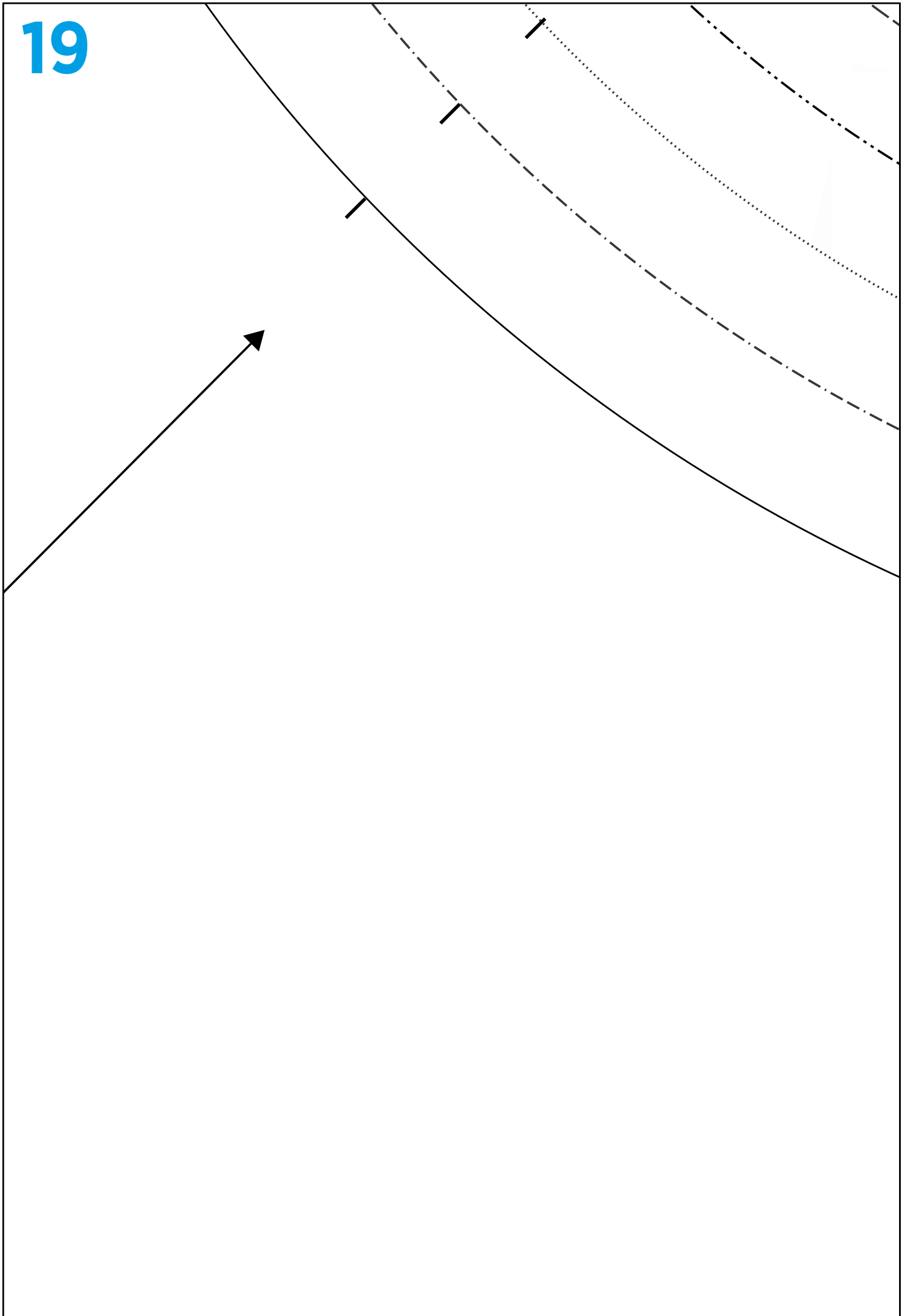
2	-----	6
3	-----	7
4	-----	8



18



19



20





KEYHOLE 30S DRESS

BOW

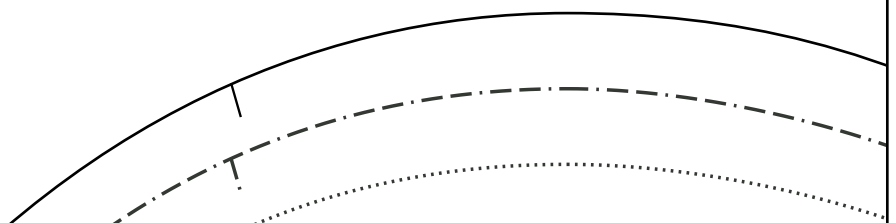
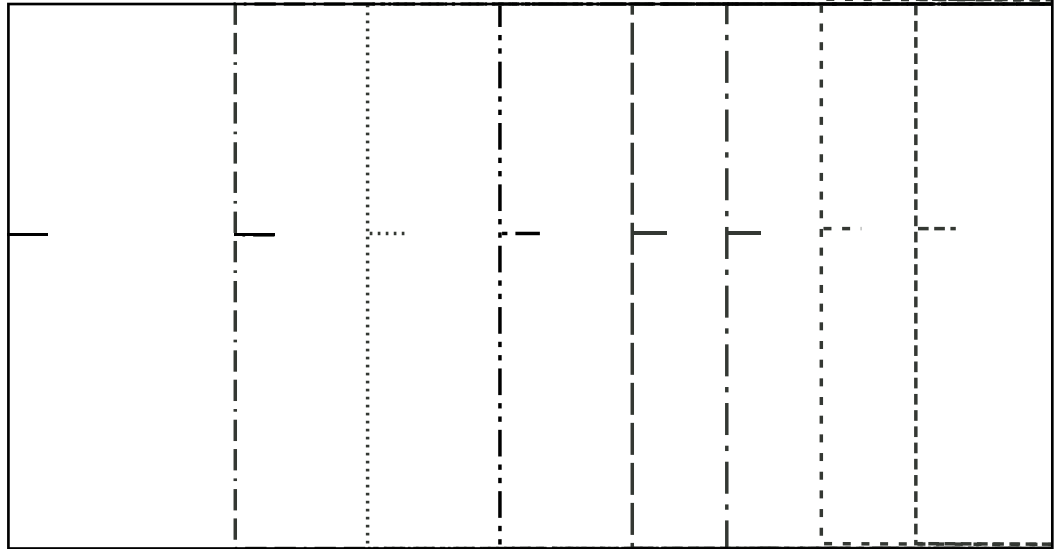
SIZE XS-XXL

CUT 2



MY HANDMADE  
WARDROBE





23



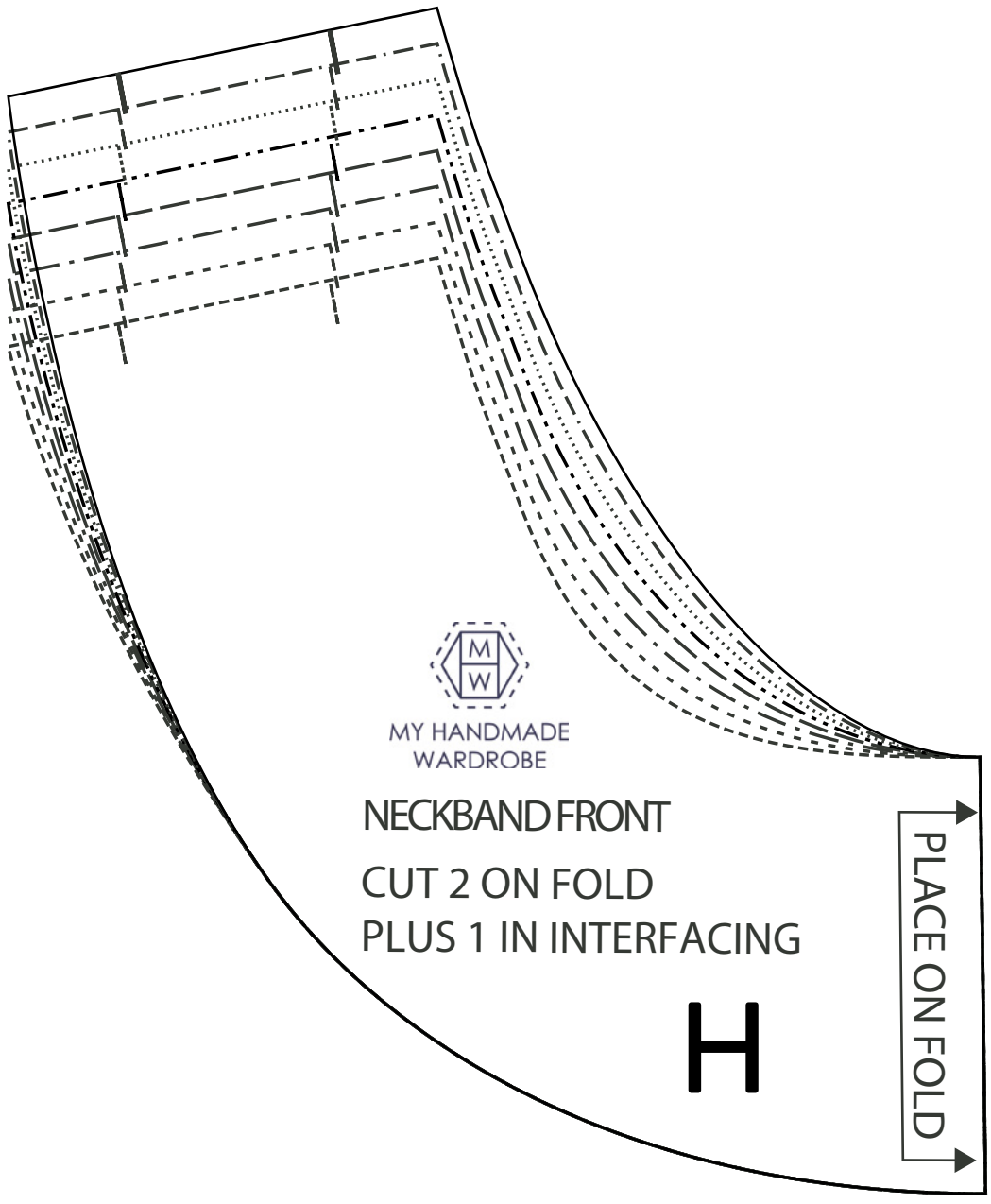
KEYHOLE 30S DRESS  
WAISTBAND BACK  
CUT 1 ON FOLD



F

PLACE ON FOLD



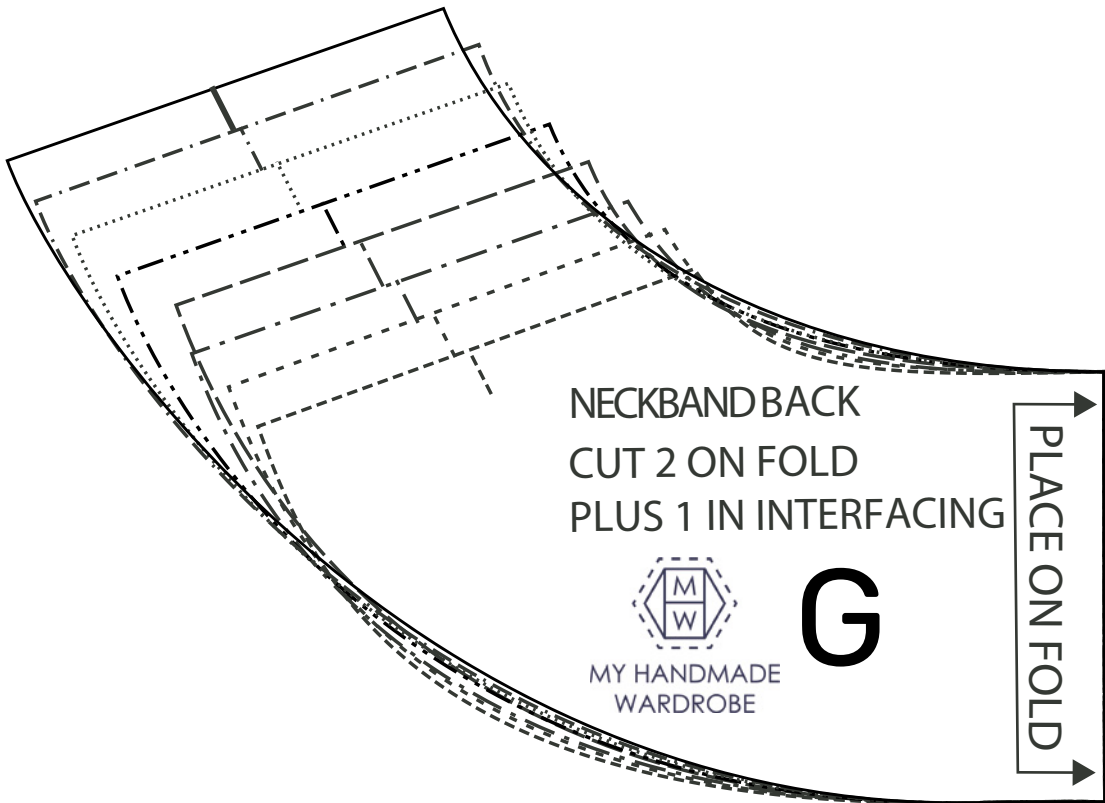


MY HANDMADE  
WARDROBE

NECKBAND FRONT  
CUT 2 ON FOLD  
PLUS 1 IN INTERFACING

**H**

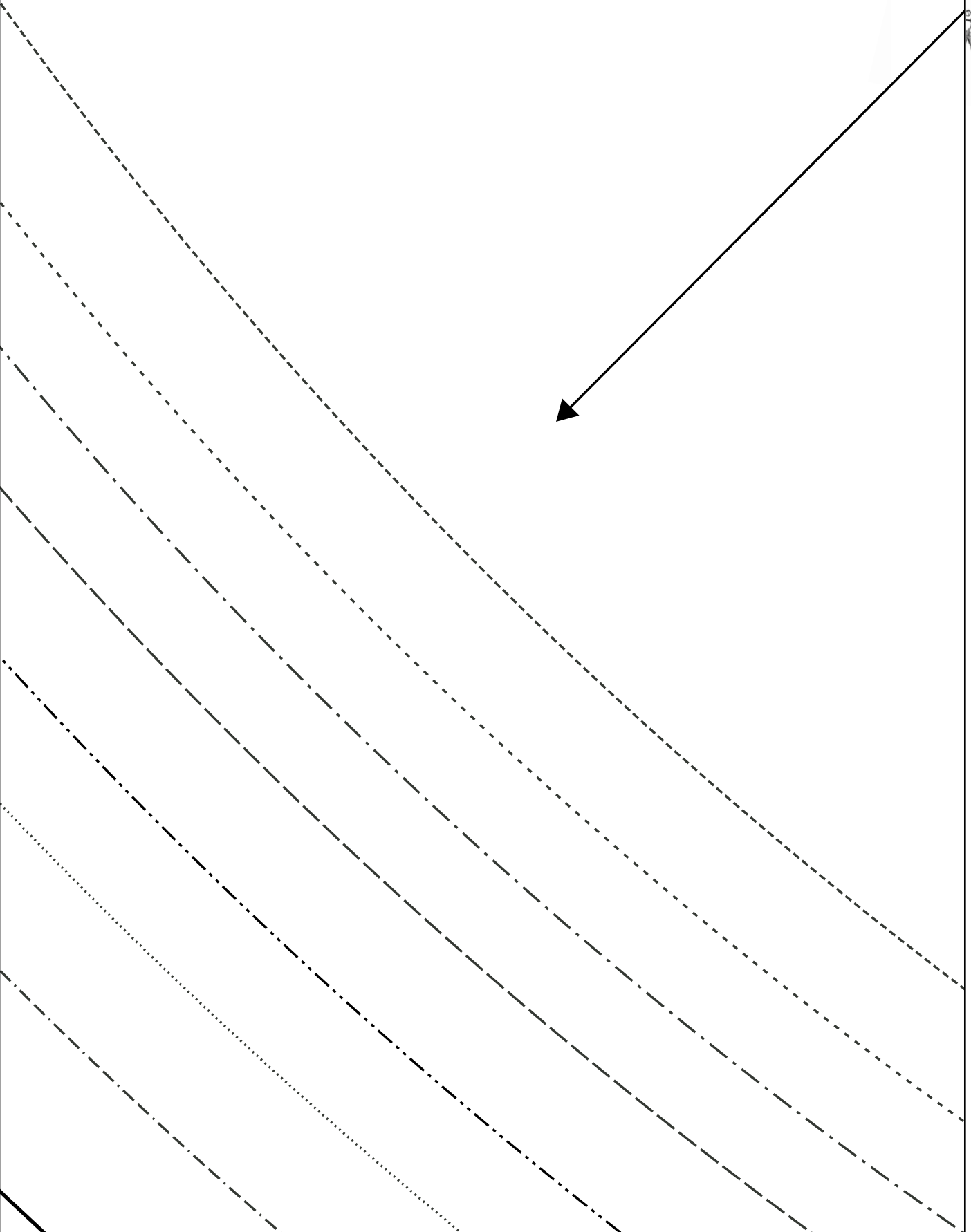
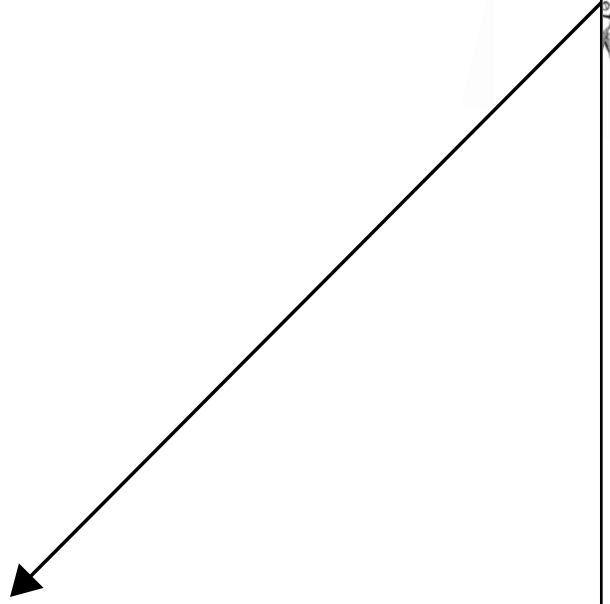
PLACE ON FOLD



26









29



MY HANDMADE  
WARDROBE

KEYHOLE 30S DRESS  
SKIRT FRONT AND BACK

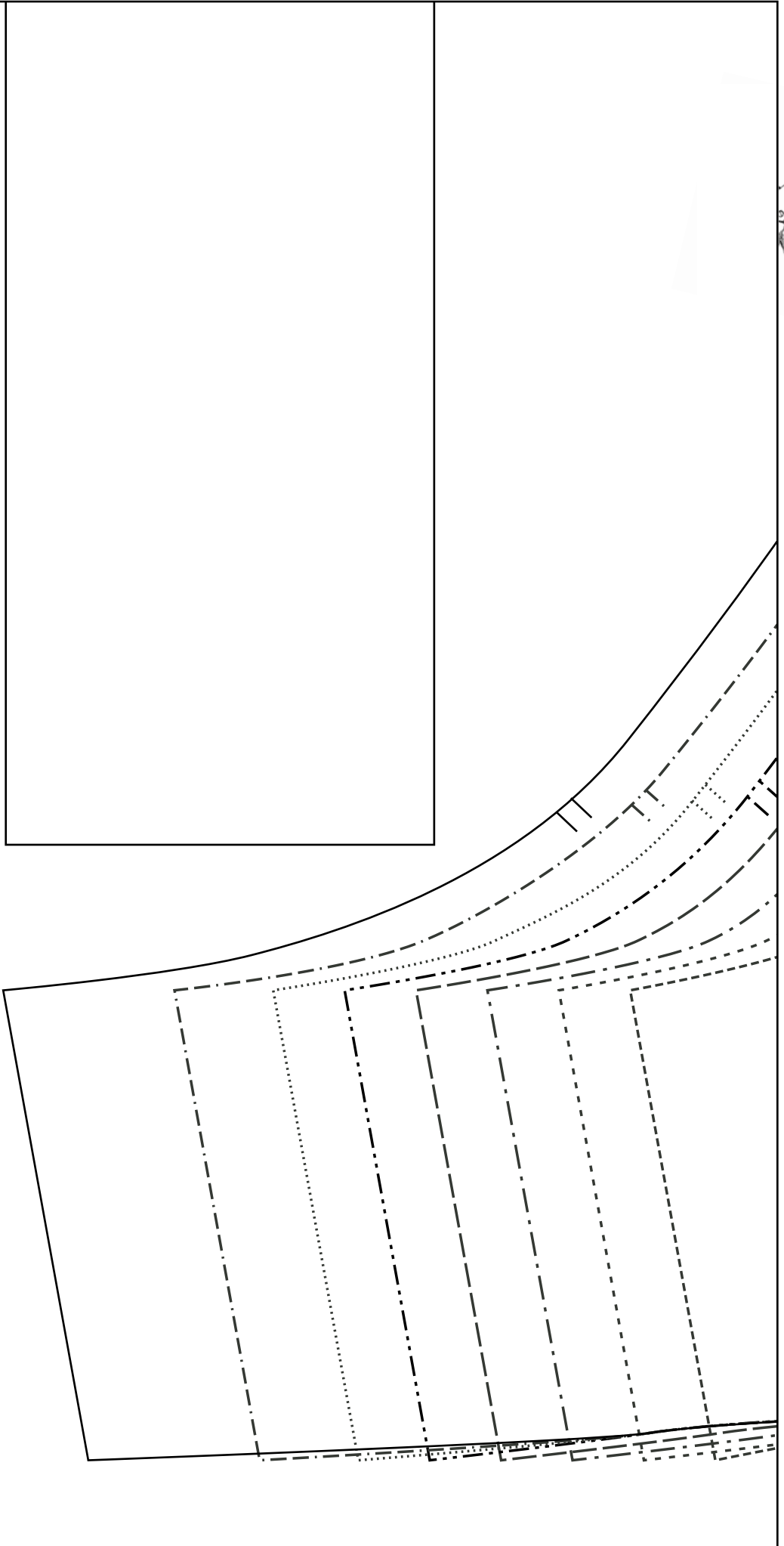
CUT 2

C



30





32



MY HANDMADE  
WARDROBE

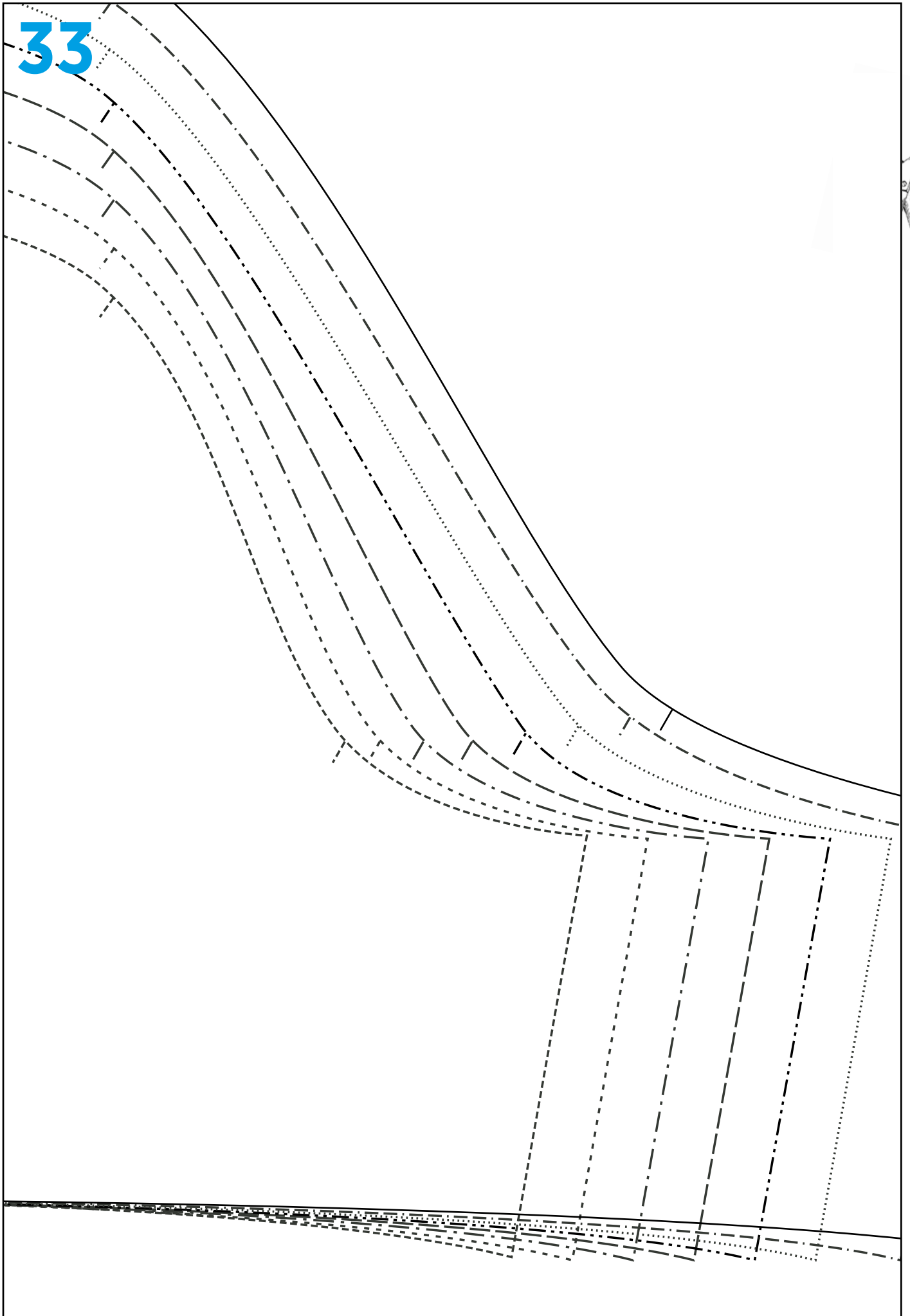
KEYHOLE 30S DRESS  
SLEEVE

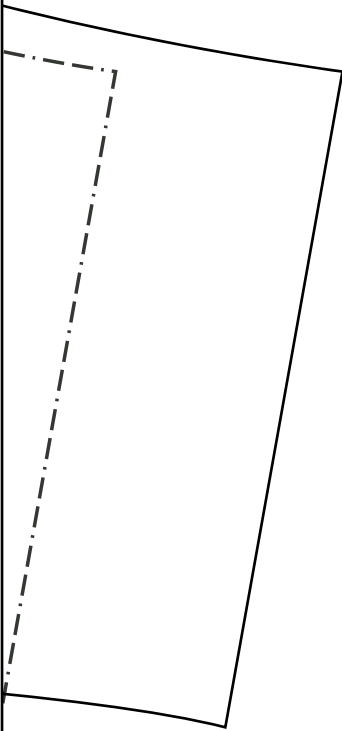
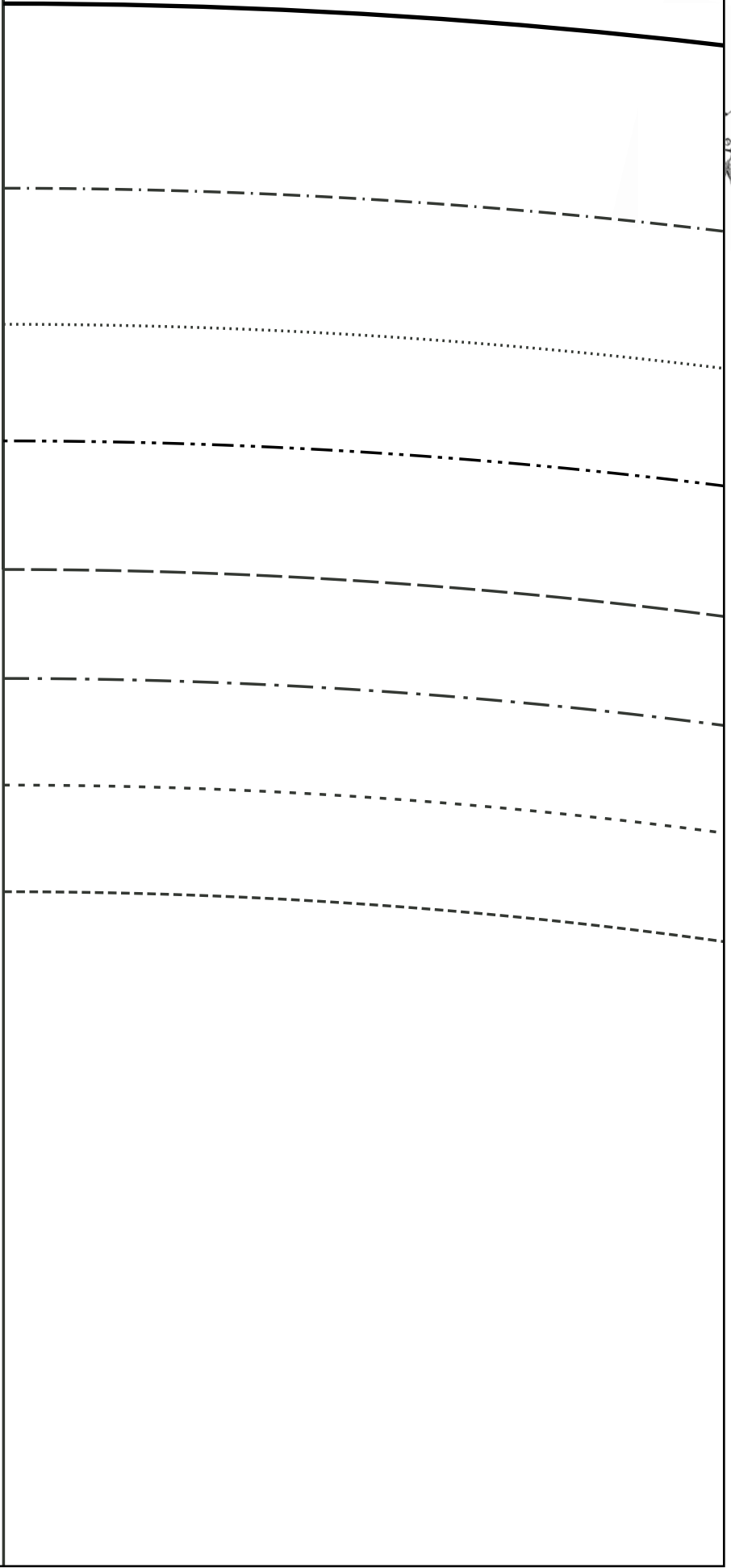
CUT 2

D



33



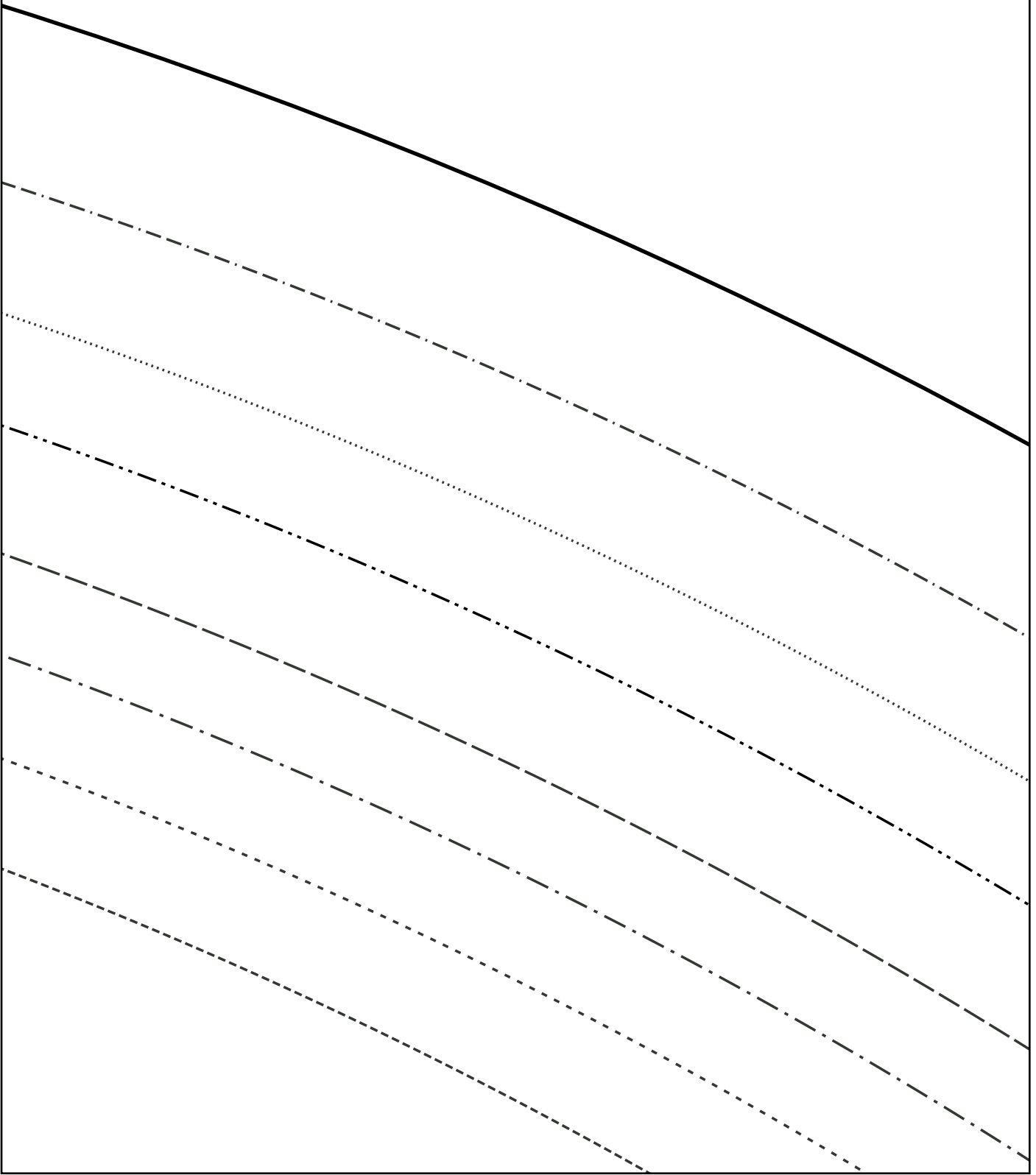




35



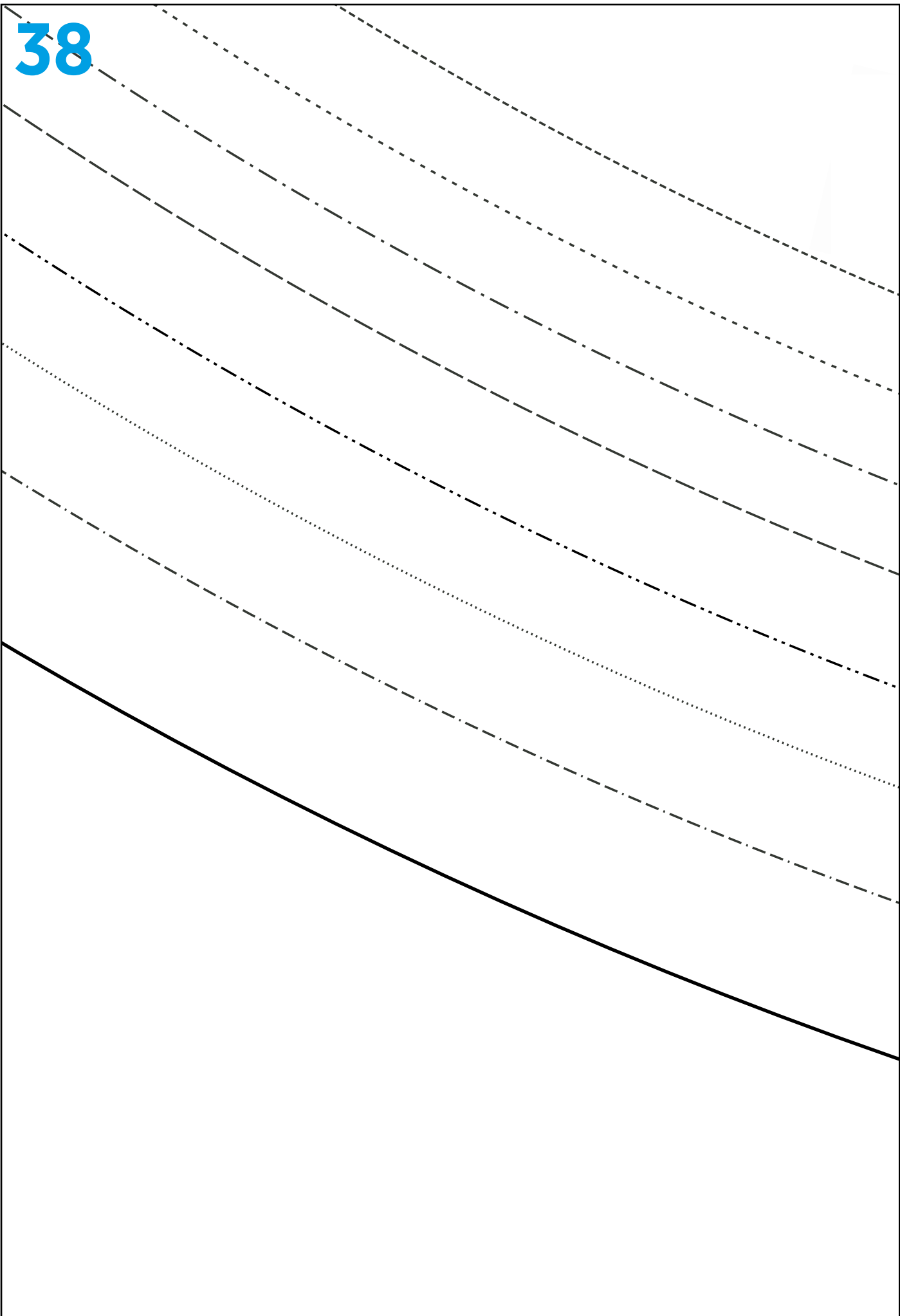
A large rectangular area containing a series of parallel lines sloping downwards from left to right. The lines are arranged in a sequence: a solid top line, followed by a dashed line, a dotted line, a dash-dot line, another dashed line, another dotted line, another dash-dot line, another dashed line, another dotted line, another dash-dot line, and finally a dashed bottom line. This pattern of lines is designed for cutting practice.

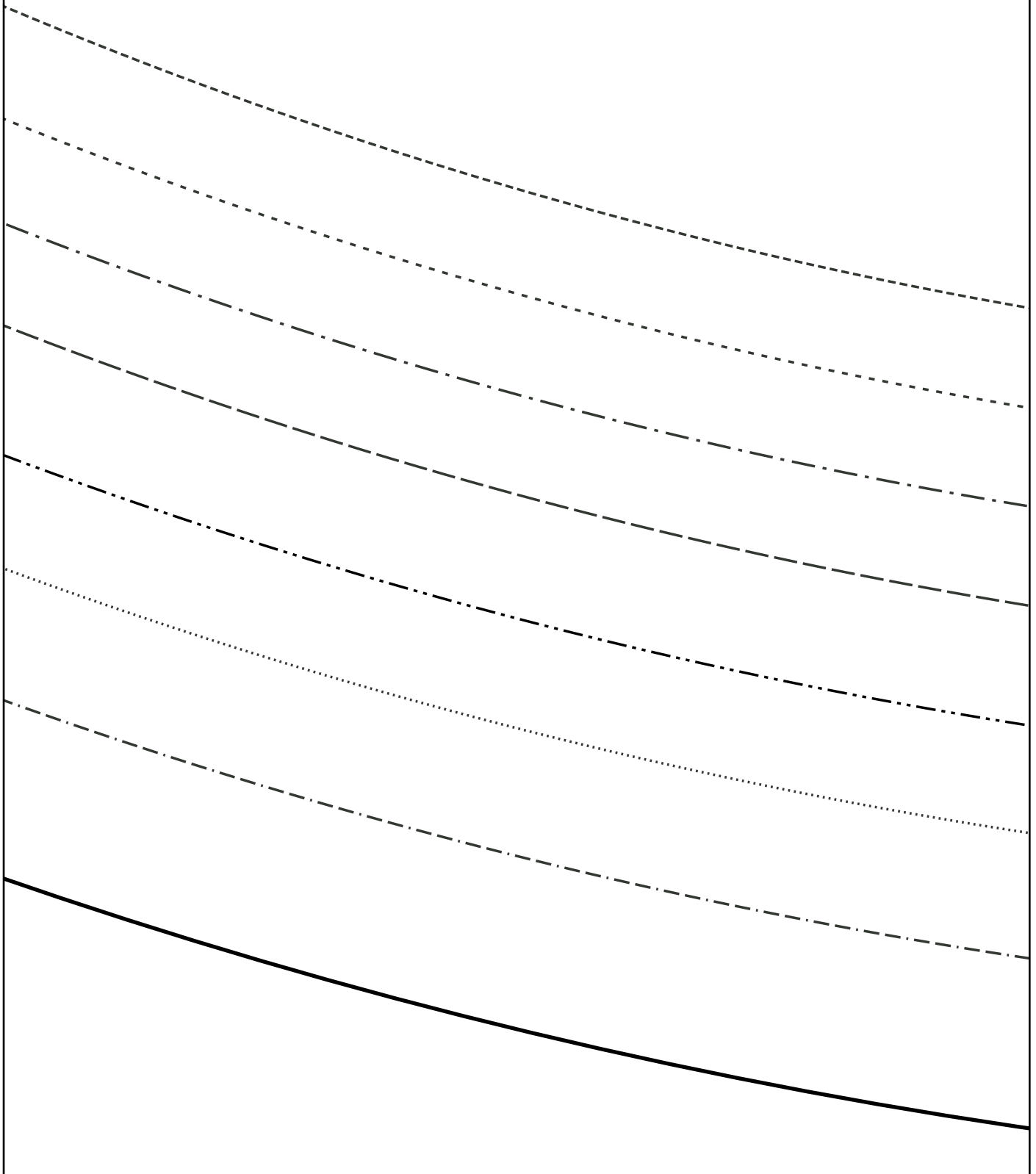


37



38

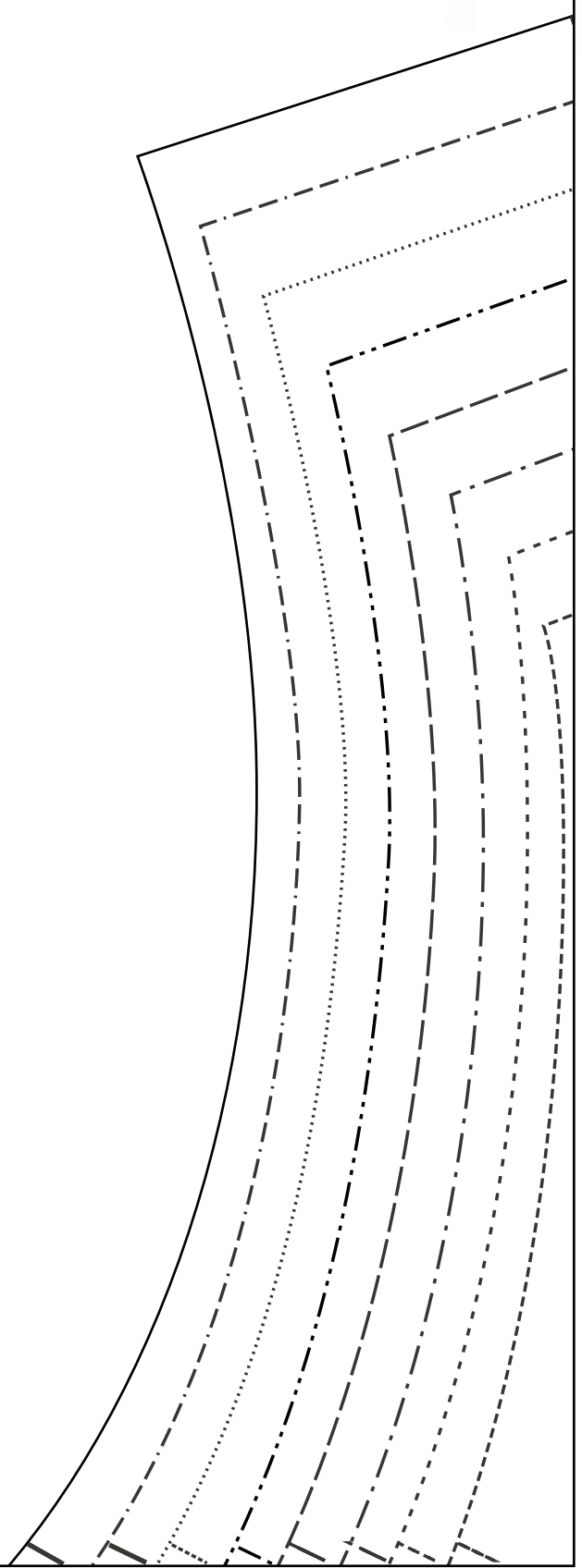




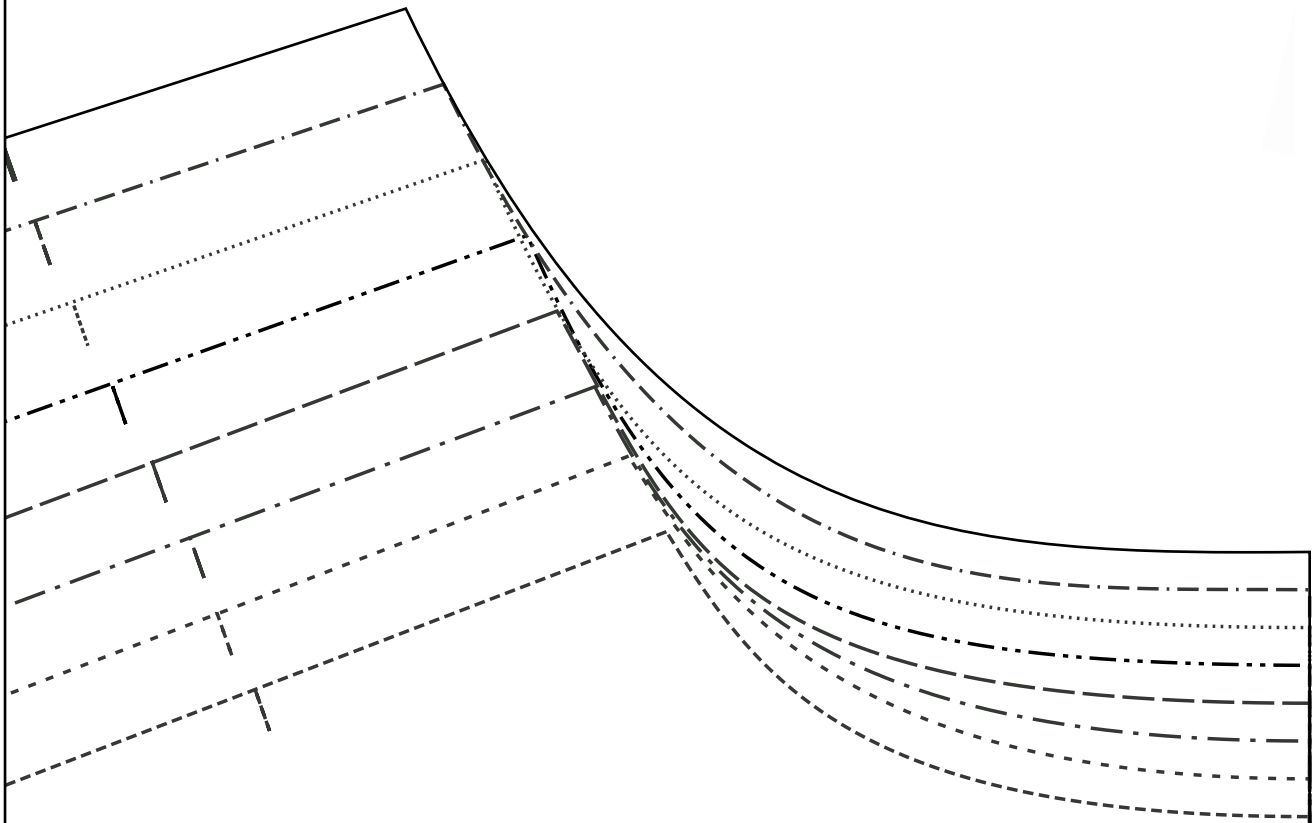
40



Handwriting practice area containing seven horizontal lines with varying styles: dashed, dash-dot, and dotted. The lines are slightly curved and span across the width of the page.



42

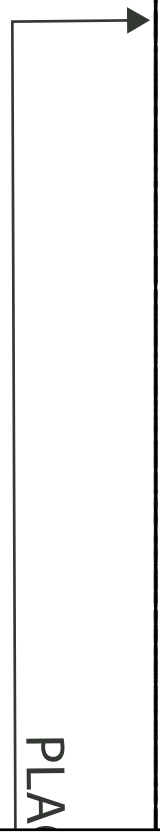


MY HANDMADE  
WARDROBE

KEYHOLE 30S DRESS  
BODICE BACK

CUT 1 ON FOLD

1.5CM SEAM ALLOWANCE INCLUDED



PLA









C

CUT 2

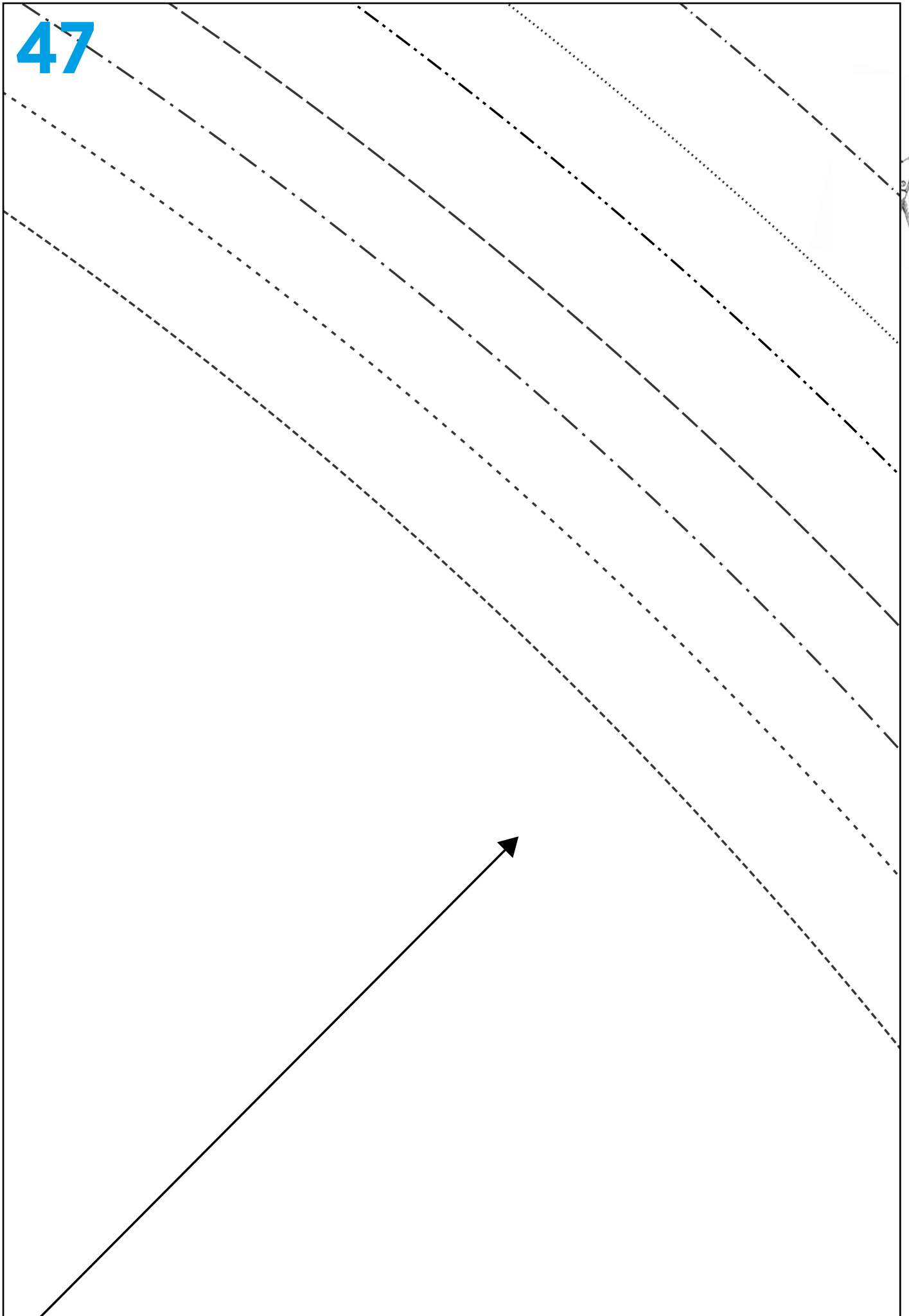
SKIRT FRONT AND BACK

KEYHOLE 30S DRESS

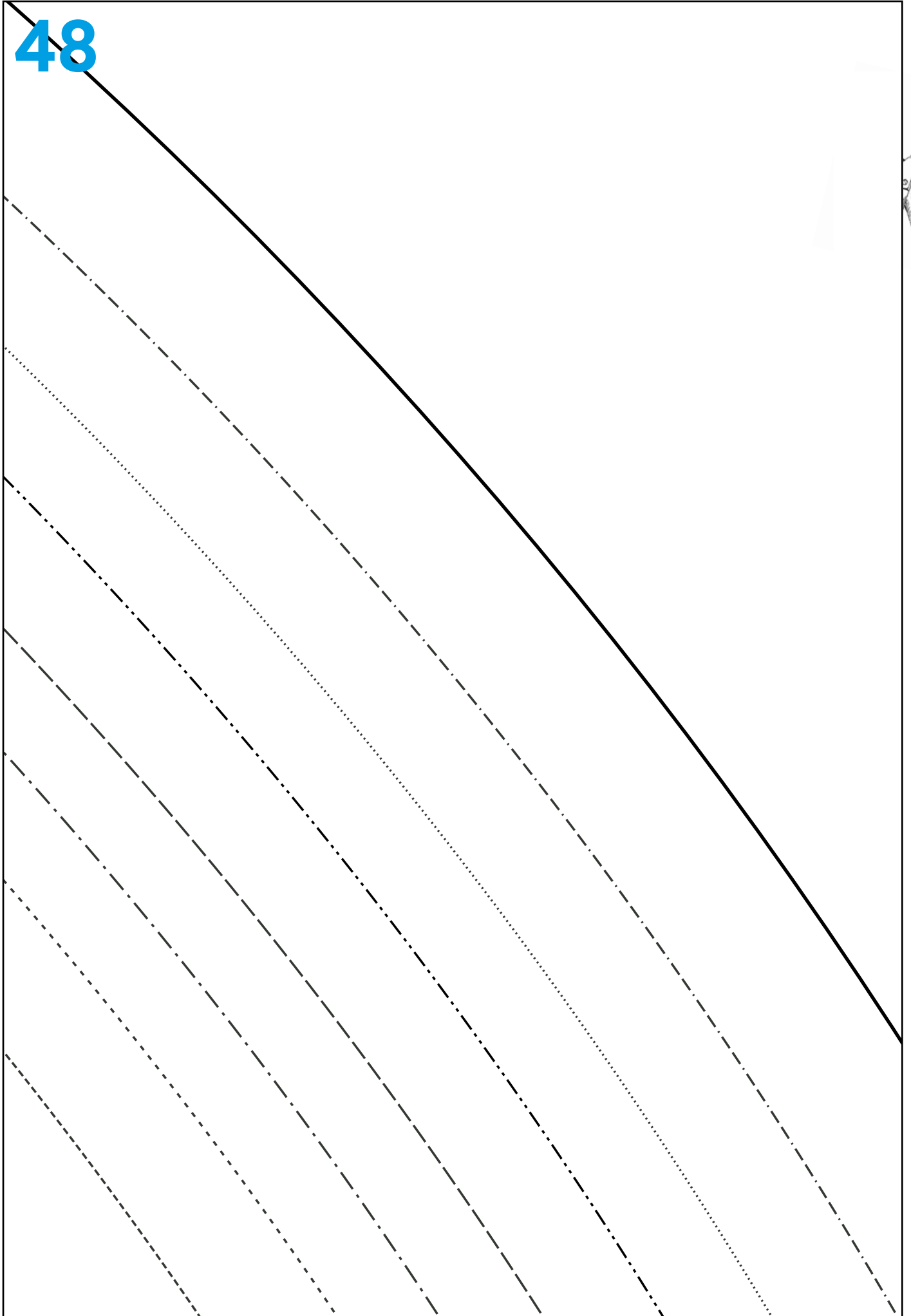
MY HANDMADE  
WARDROBE

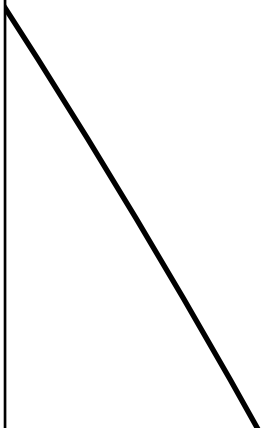


47



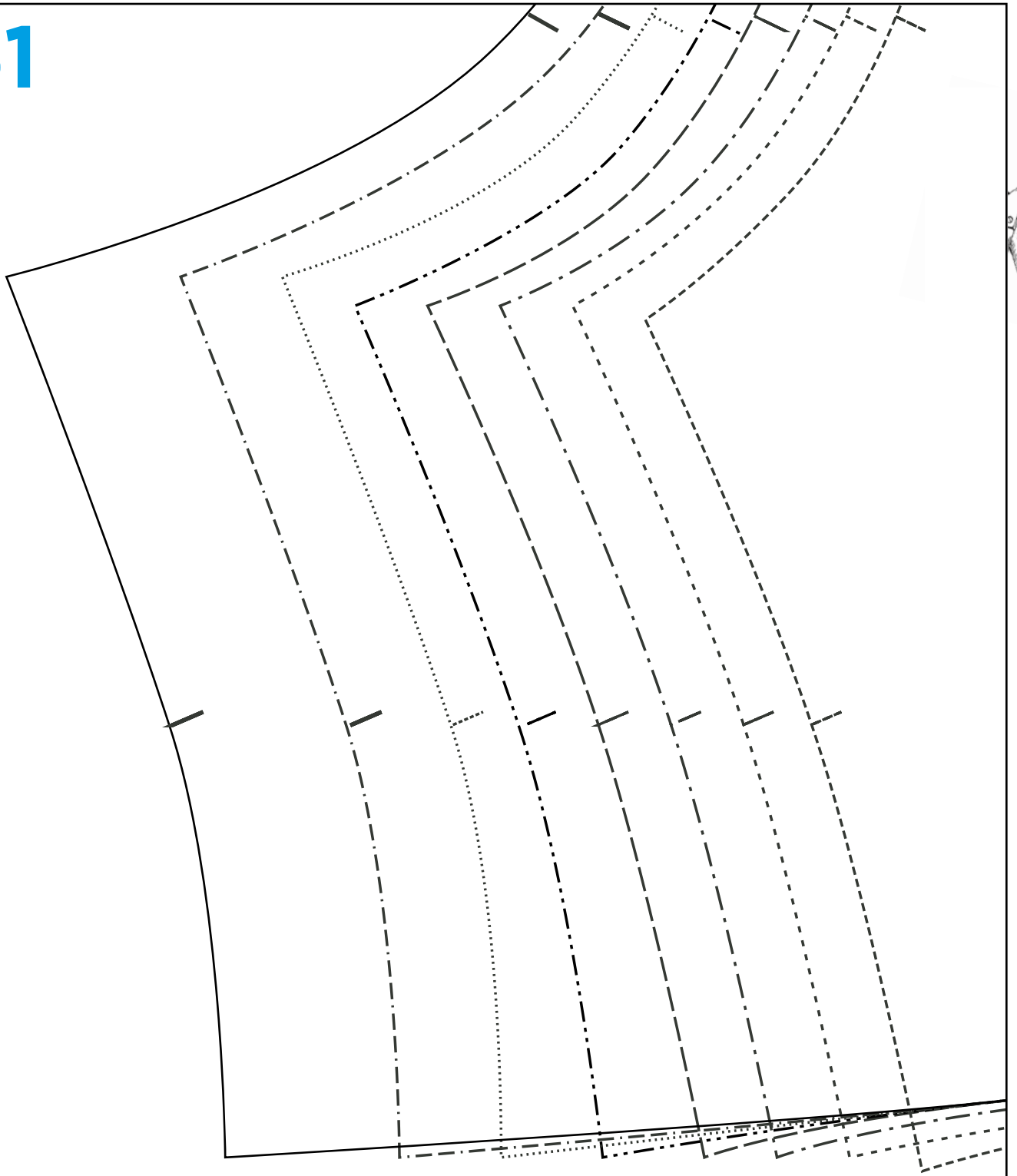
48











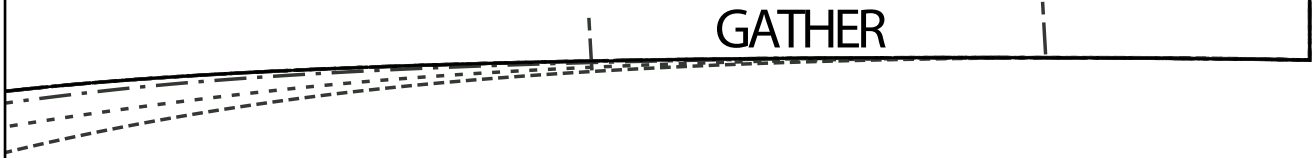
PATTERN SIZE KEY

- SIZE ① ······
- SIZE ② ······
- SIZE ③ ·- - -
- SIZE ④ - - - -
- SIZE ⑤ ·- ····
- SIZE ⑥ ······
- SIZE ⑦ ·- ····
- SIZE ⑧ ————

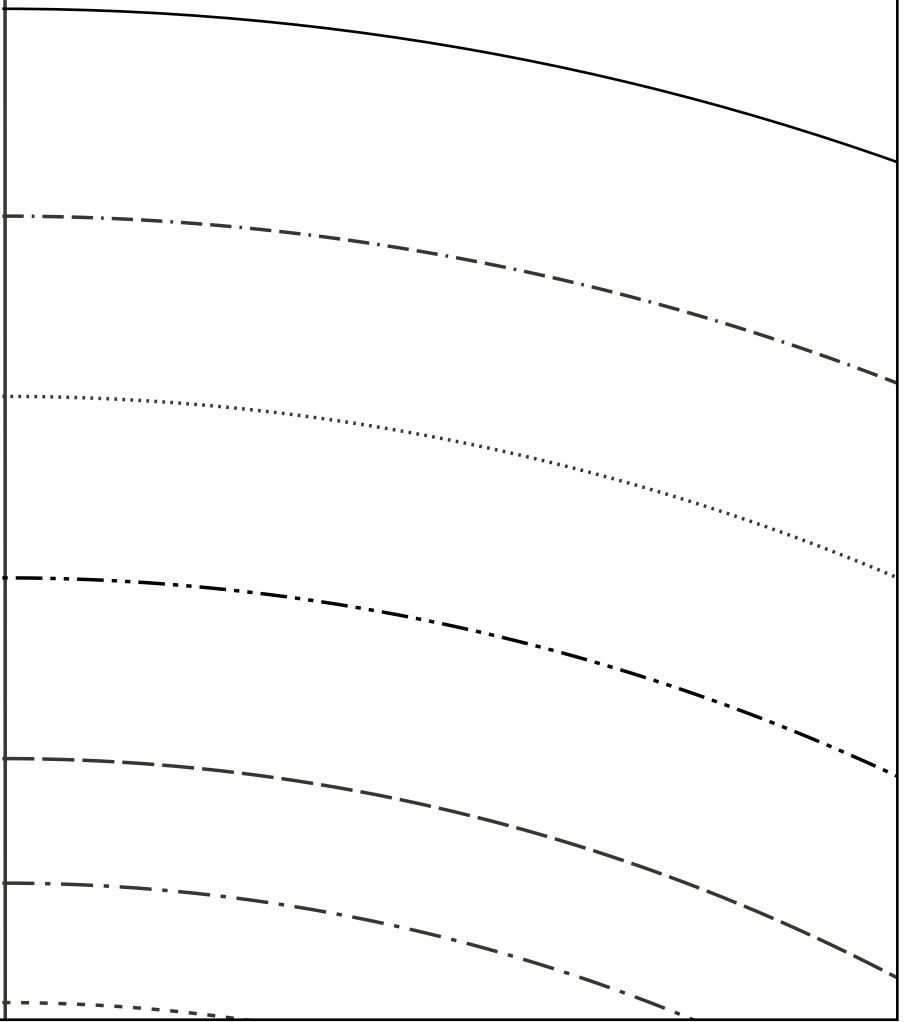
CUT ON FOLD

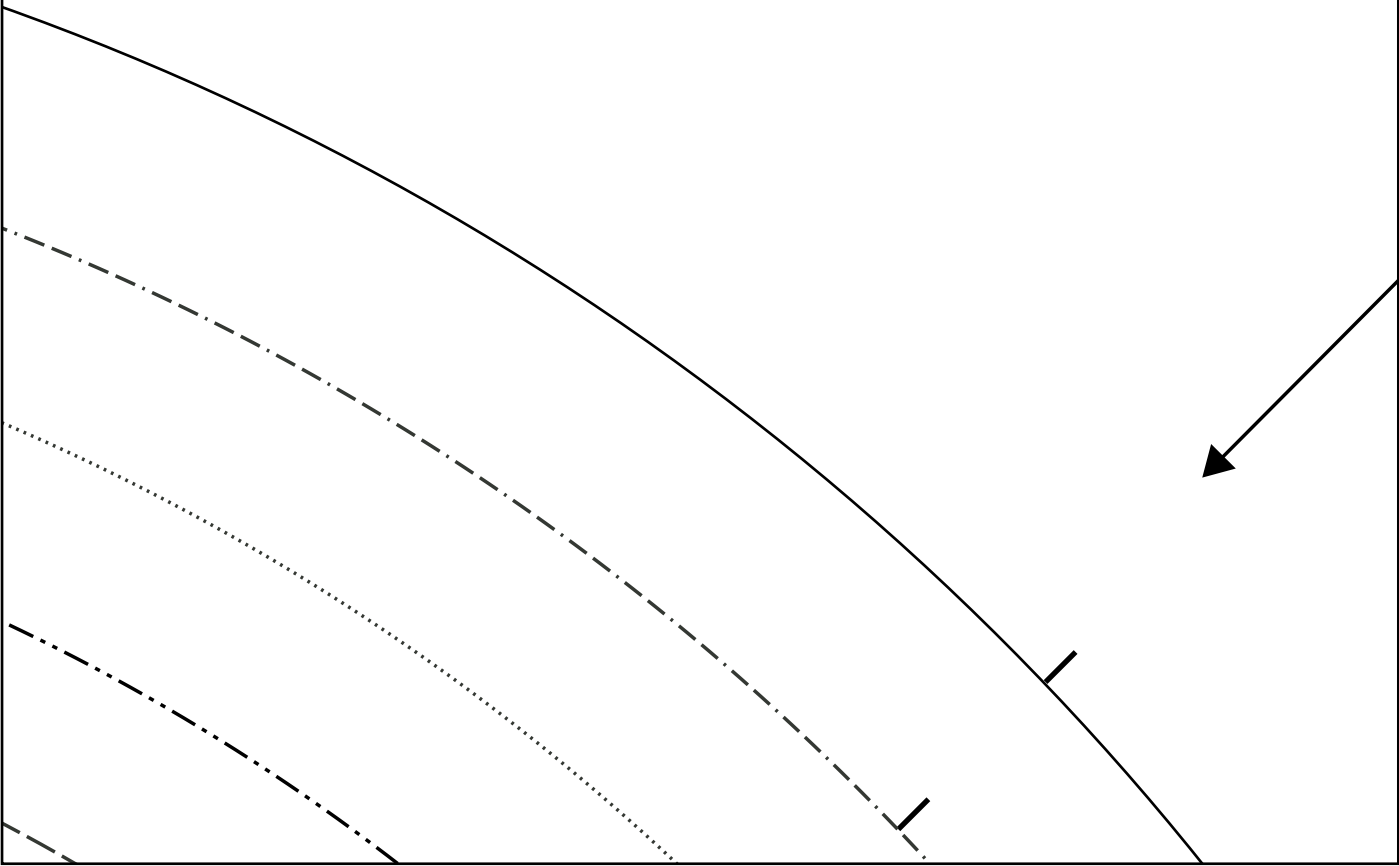


GATHER







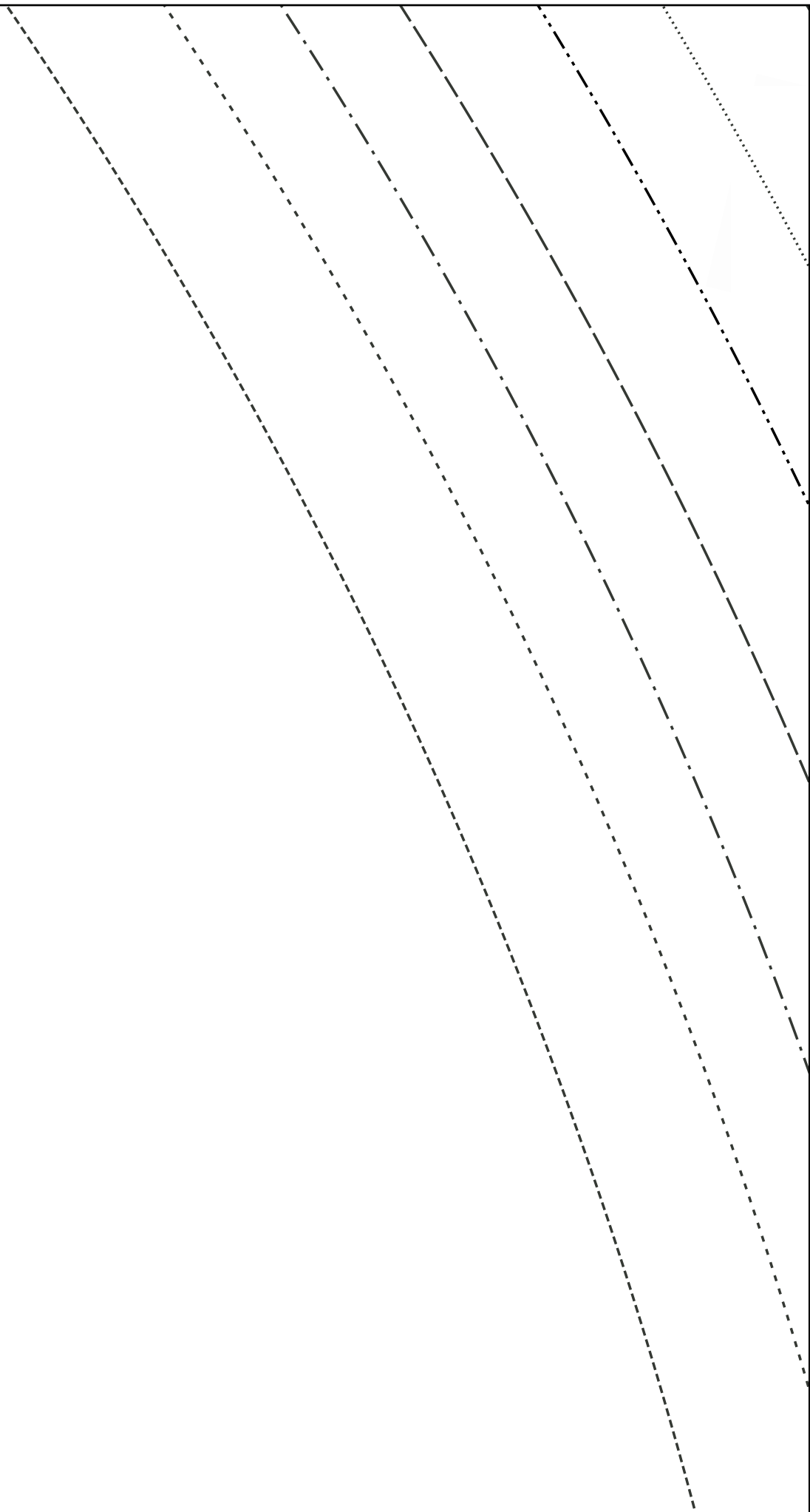


56





_____	⑧	.....	④
- - -	①	-----	③

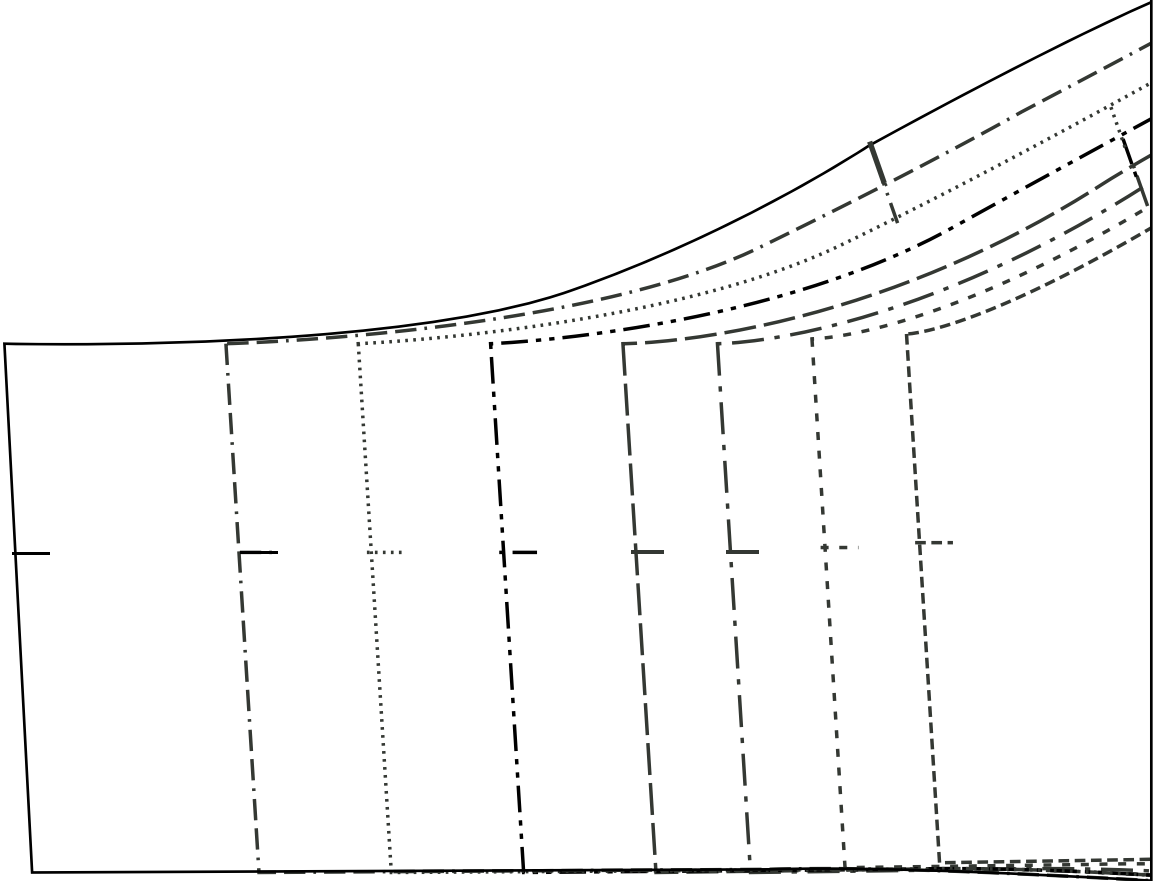


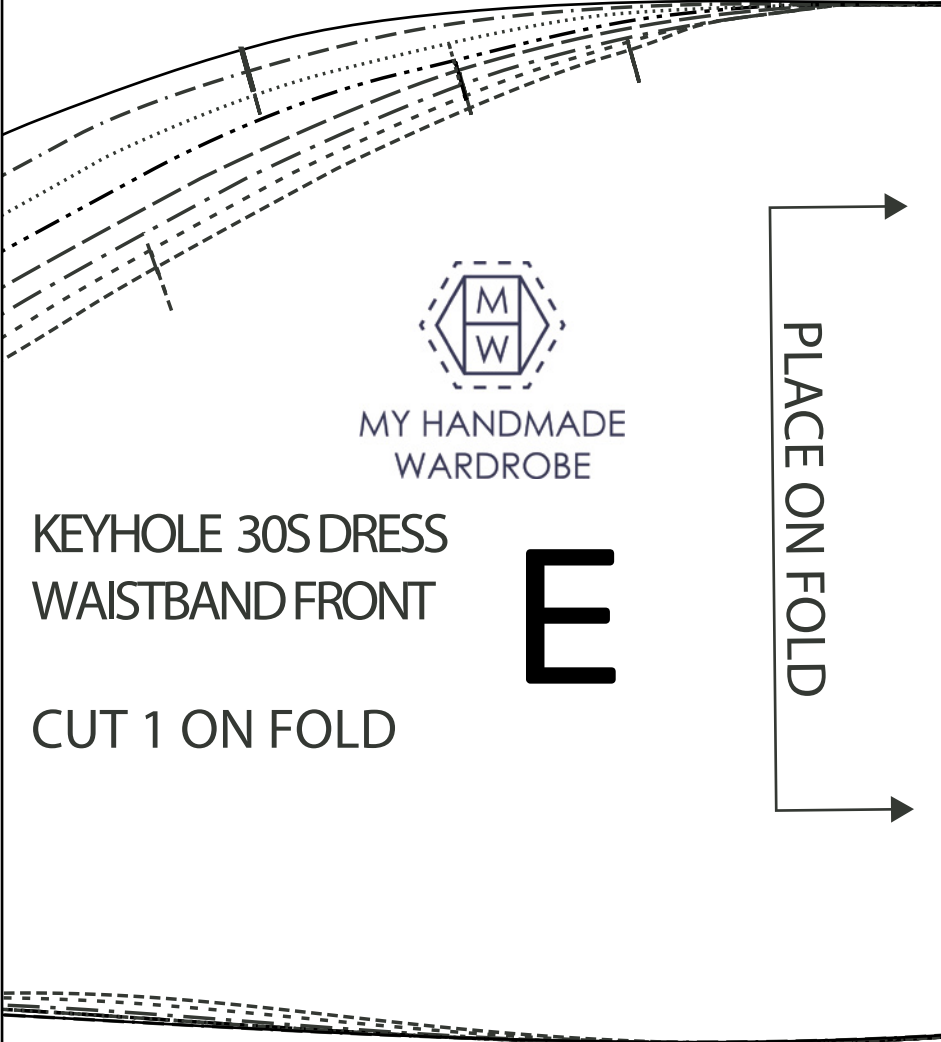


59









  
MY HANDMADE  
WARDROBE

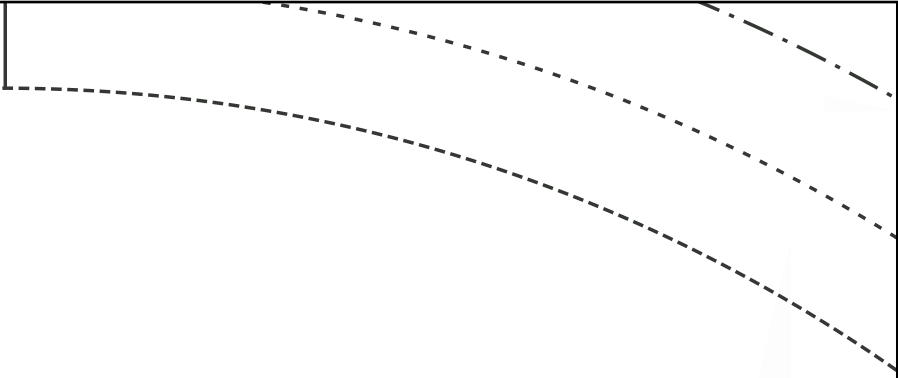
KEYHOLE 30S DRESS  
WAISTBAND FRONT

E

CUT 1 ON FOLD

PLACE ON FOLD

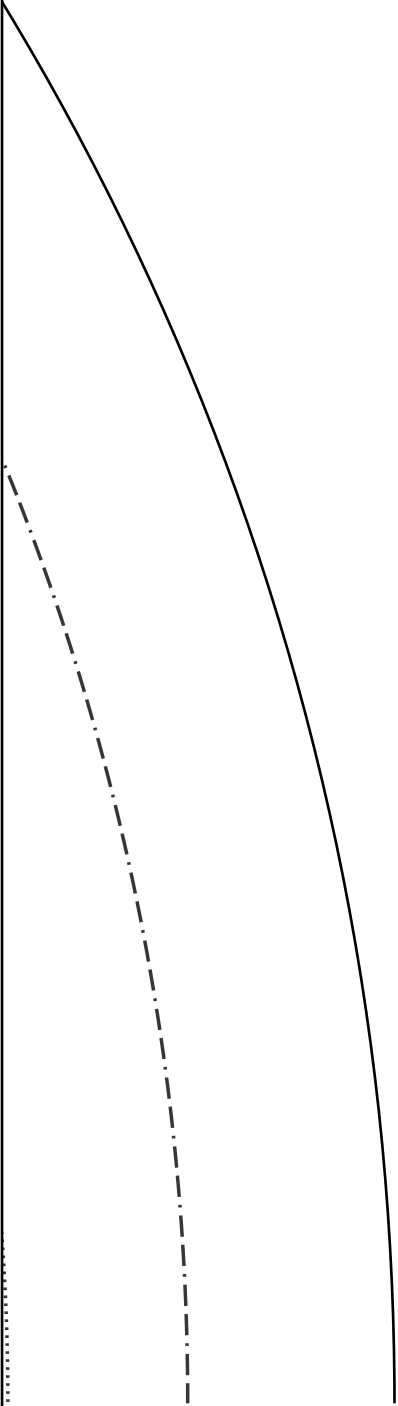




65



66





67

9

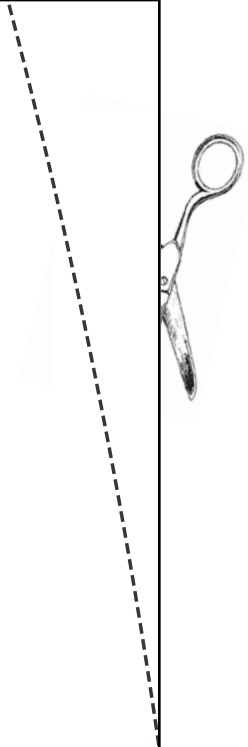
2

5

1

Pattern Size Key





69



