

SIZE TABLE

TIANA'S CLOSET SEWING PATTERNS

Size code	XXS	XS	S	M	L	XL	XXL	3XL	4XL	5XL
Bust	centimeter	80	84	88	92	96	100	104	110	122
	inch	31.5	33.1	34.6	36.2	37.8	39.4	40.9	43.3	47.2
Waist	centimeter	60	64	68	72	76	80	84	90	102
	inch	23.6	25.2	26.8	28.3	29.9	31.5	33.1	35.4	40.2
Hip	centimeter	88	92	96	100	104	108	112	118	130
	inch	34.6	36.2	37.8	39.4	40.9	42.5	44.1	46.5	52.0

PRINTING INSTRUCTIONS

- Tiana's Closet sewing patterns are made in Layered PDF format, which means all sizes are saved in one file and can be shown or hidden. It is recommended to use Adobe Acrobat Reader (paid version on Mac OS, free on Windows) or Foxit PDF Reader (free, works on Windows only) to read the file correctly. In order to choose the desired size(s), go to Layers tab of your PDF reader, uncheck all boxes except for the desired size(s) and the box Print for all sizes.

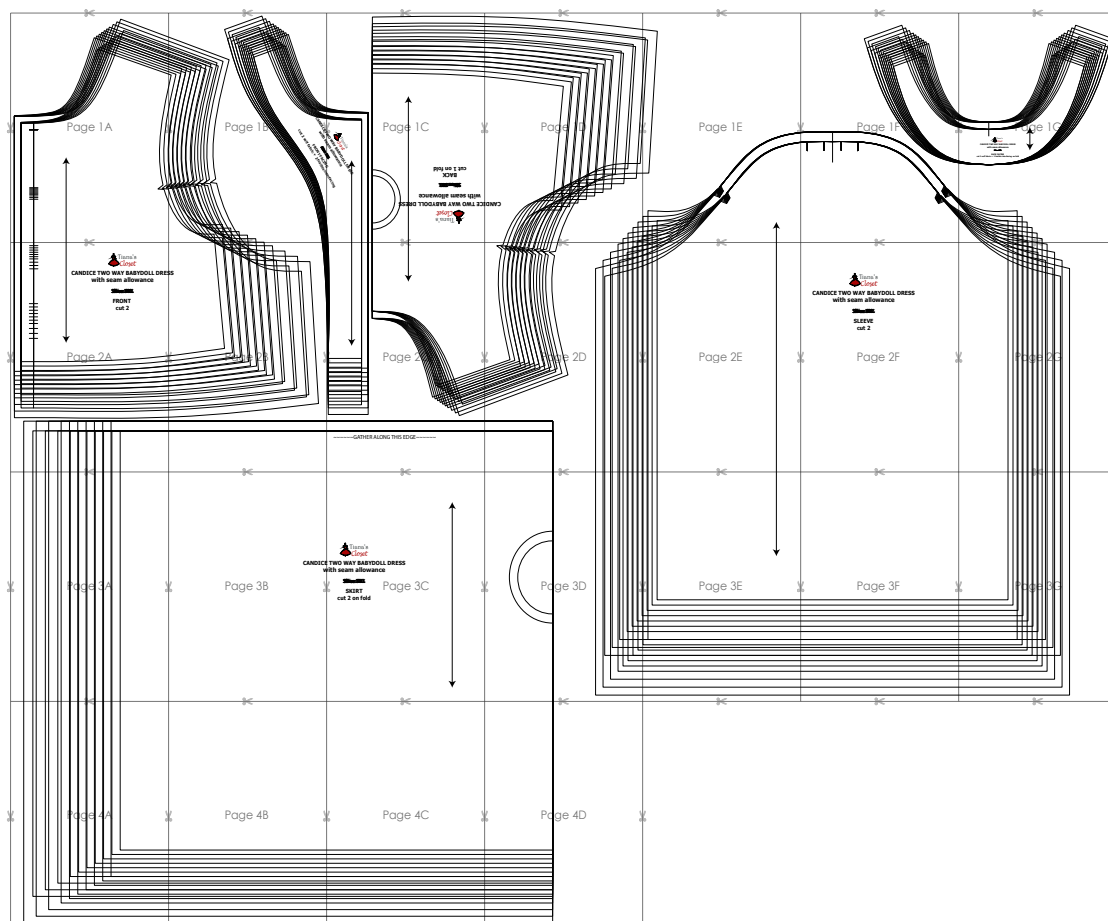
- When printing the pattern, go to Print settings, in the tab Scale choose Custom scale: 100% (or Scaling: None or Actual Size) to print true to size. Note: some computers print smaller than true size even when you choose 100% scale, so you will have to adjust the scale to a little larger than 100% and measure the test square until you get the true size.

- The test square is 10 centimeters (horizontally) and 4 inches (vertically).

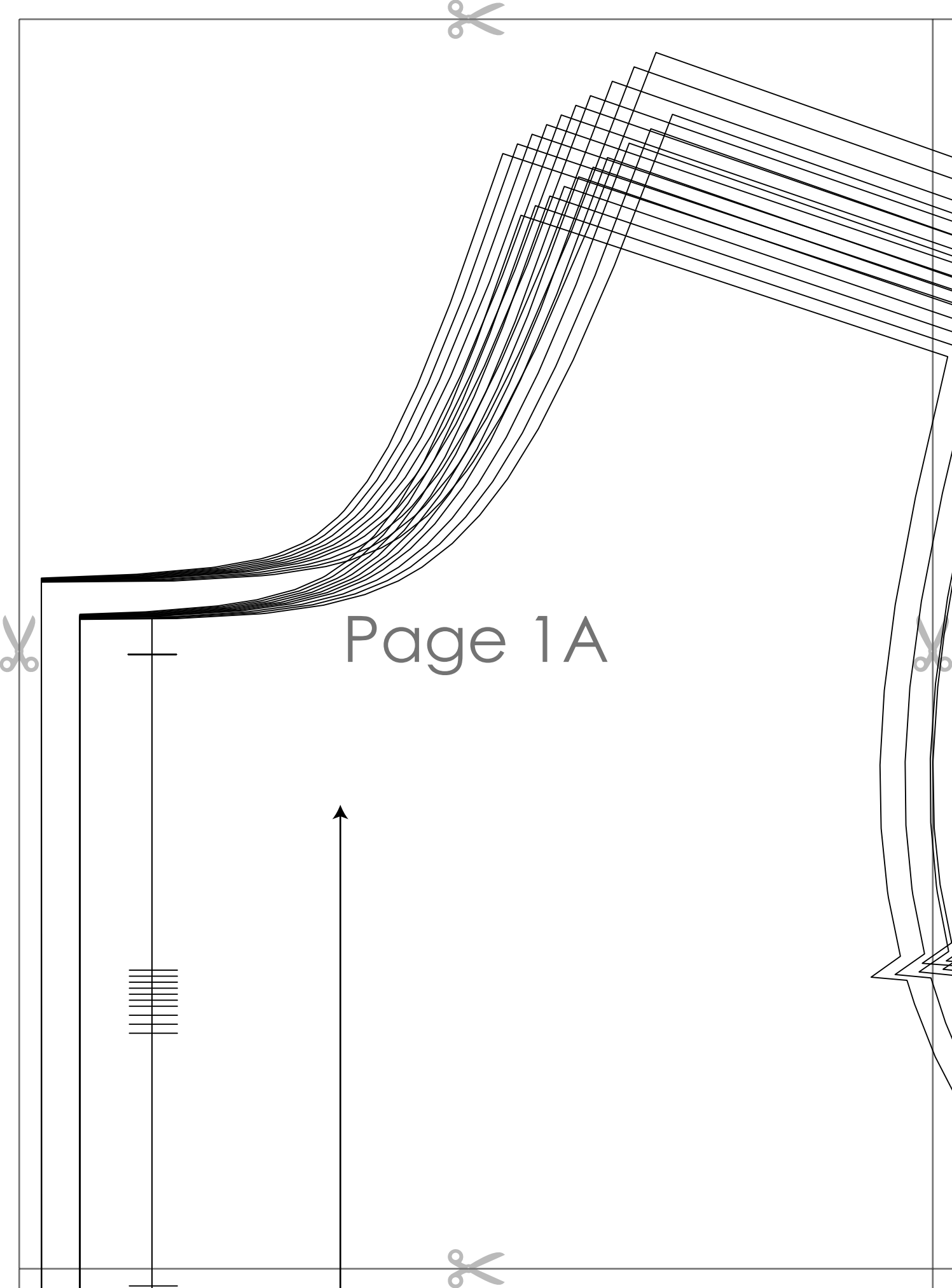
- Always print the first page of the file and measure to avoid waste of paper.

- After printing the pattern, cut the pages along the lines with scissors icon, align and tape the pages according to their sequences. For example, page 1A is taped to page 1B in a row, and page 1A is taped to page 2A in a column. Please see the image below to see how the pages line up.

- You can find photo instruction for printing sewing patterns on Tiana's Closet website: <https://tianas-closet.com/index.php/how-to-print-tianas-closet-patterns/>



For more ideas and free sewing patterns, visit <http://tianas-closet.com>



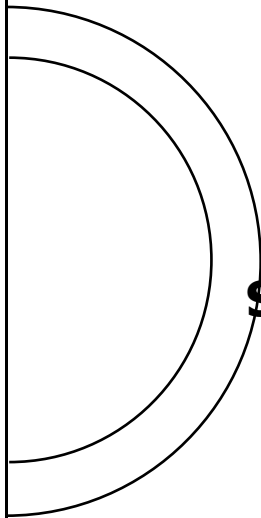
Page 1B

CANDICE TWO
with seam
cut 2 self fabric + 2 fusible interfa
FRONT FACING

CE TWO WAY BABYDOLL DRESS
with seam allowance
CTING
e interfacing



Page 1C



CE TWO WAY BABYDOLL DRESS
with seam allowance
~~STAY-INS~~
BACK
cut 1 on fold

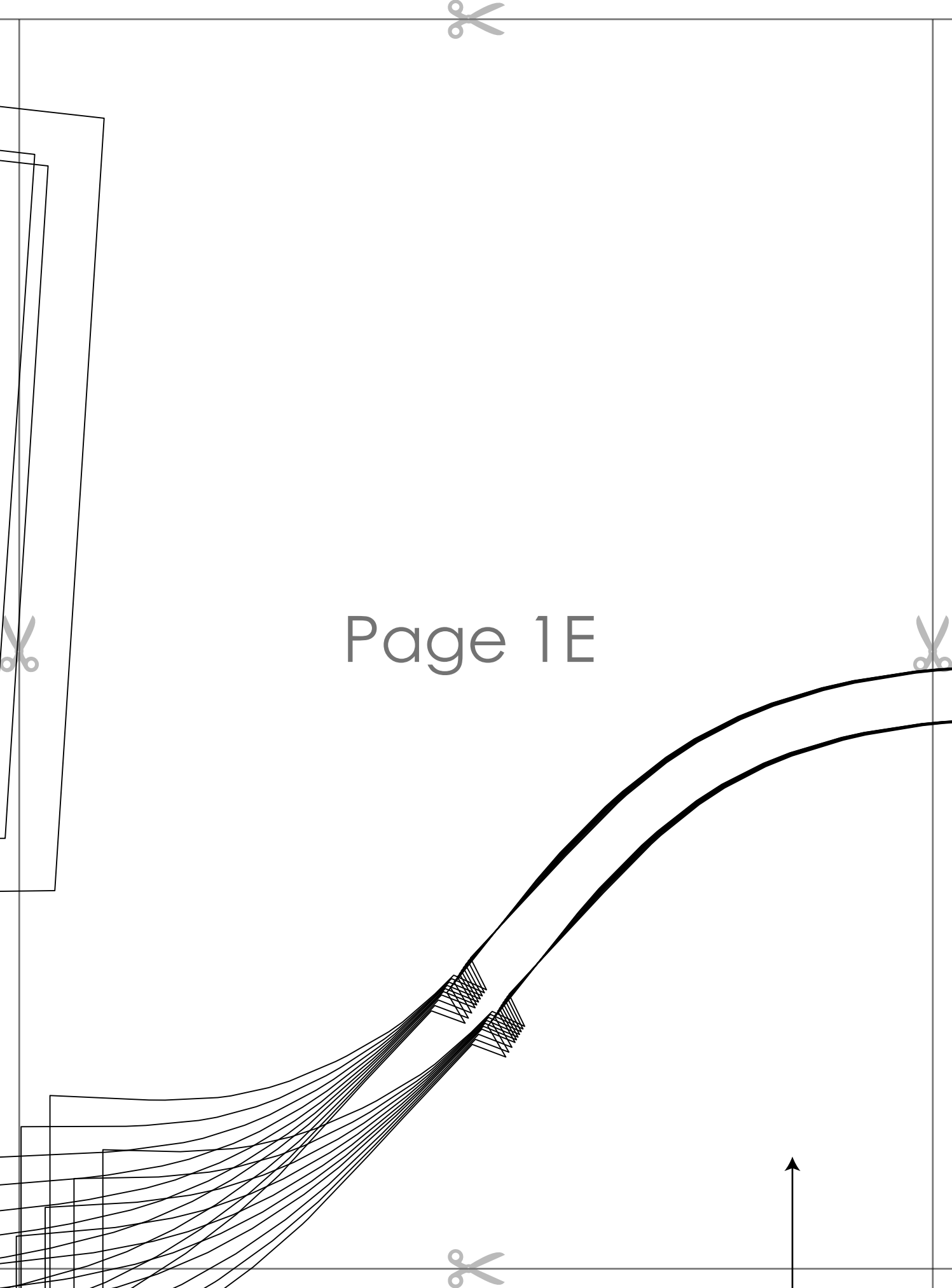




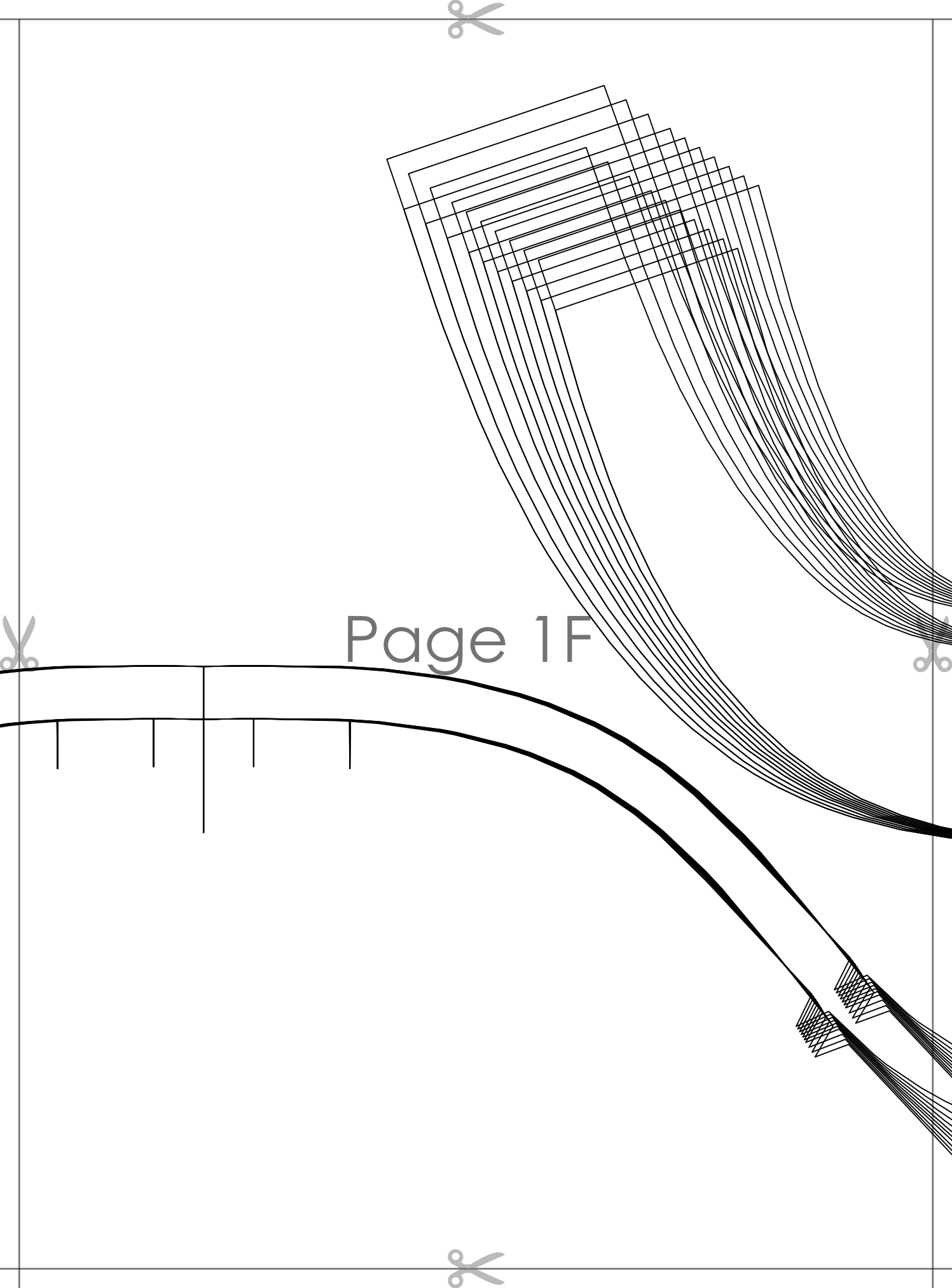
Page 1D

CANDID

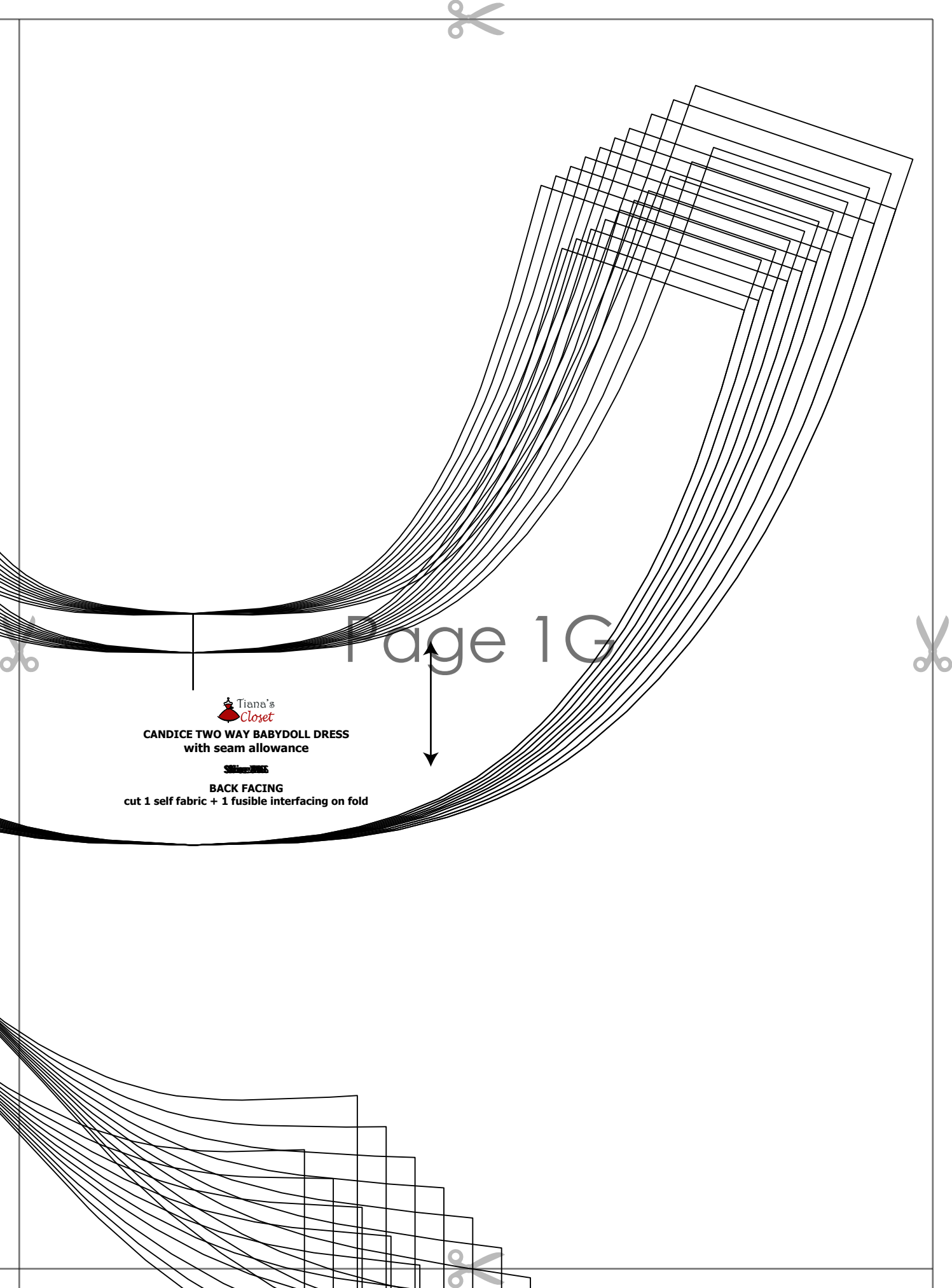




Page 1E



Page 1F



Page 1G



CANDICE TWO WAY BABYDOLL DRESS
with seam allowance

Size: 10-12

BACK FACING

cut 1 self fabric + 1 fusible interfacing on fold



CANDICE TWO WAY BABYDOLL DRESS
with seam allowance

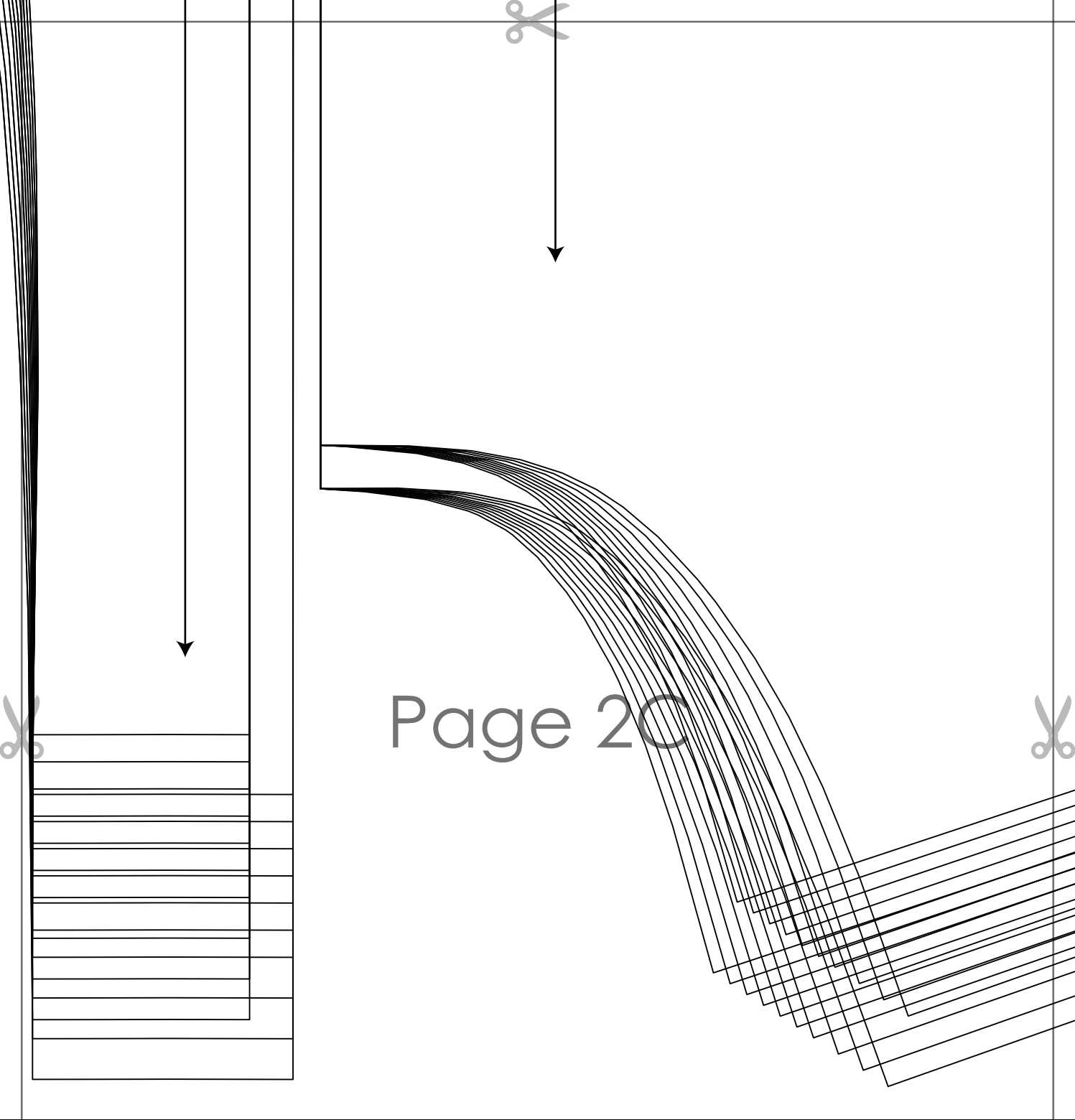
~~Size 8-10~~

FRONT
cut 2

Page 2A

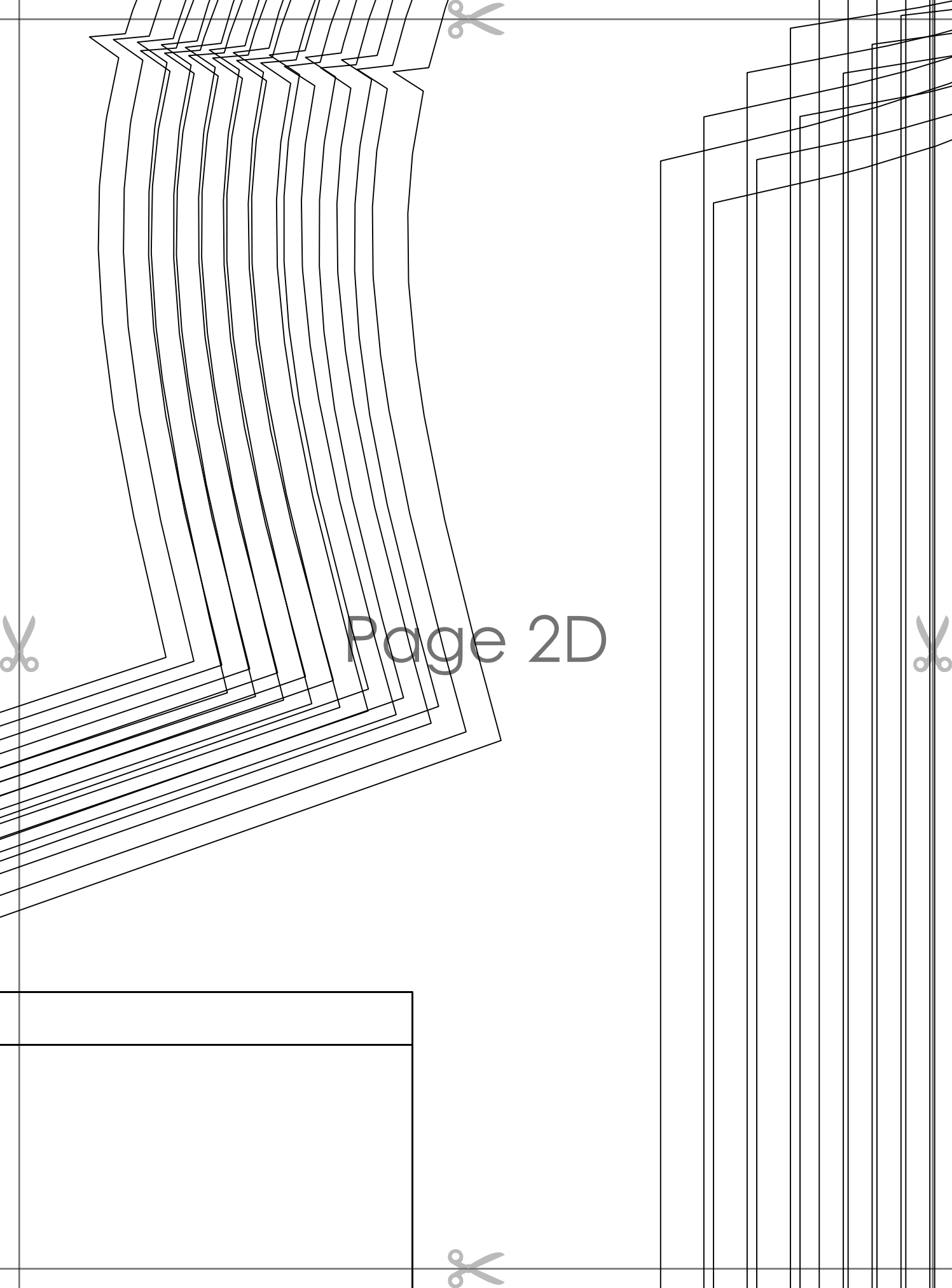
ESS

Page 2B

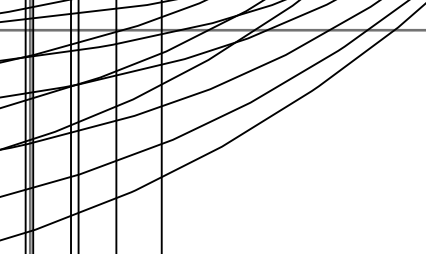


Page 2C

~~~~~GATHER ALONG THIS EDGE~~~~~



Page 2D



Page 2E





**CANDICE TWO WAY BABYDOLL DRESS  
with seam allowance**

~~Size XS~~

**SLEEVE  
cut 2**

Page 2F



Page 2G





Page 3A







**CANDICE T**  
**wi**

Page 3B



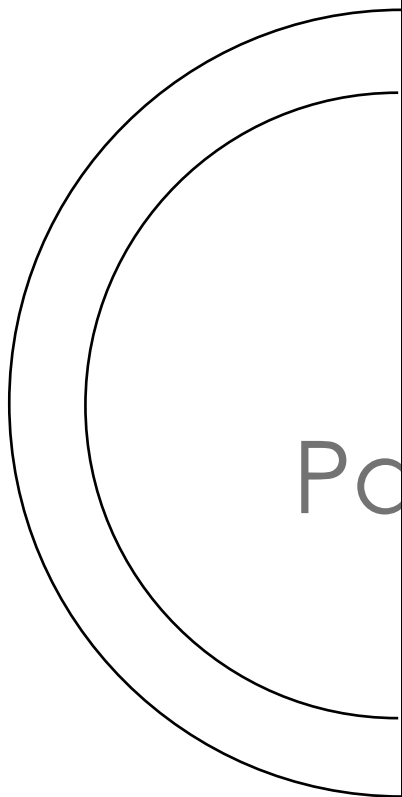


# CE TWO WAY BABYDOLL DRESS with seam allowance

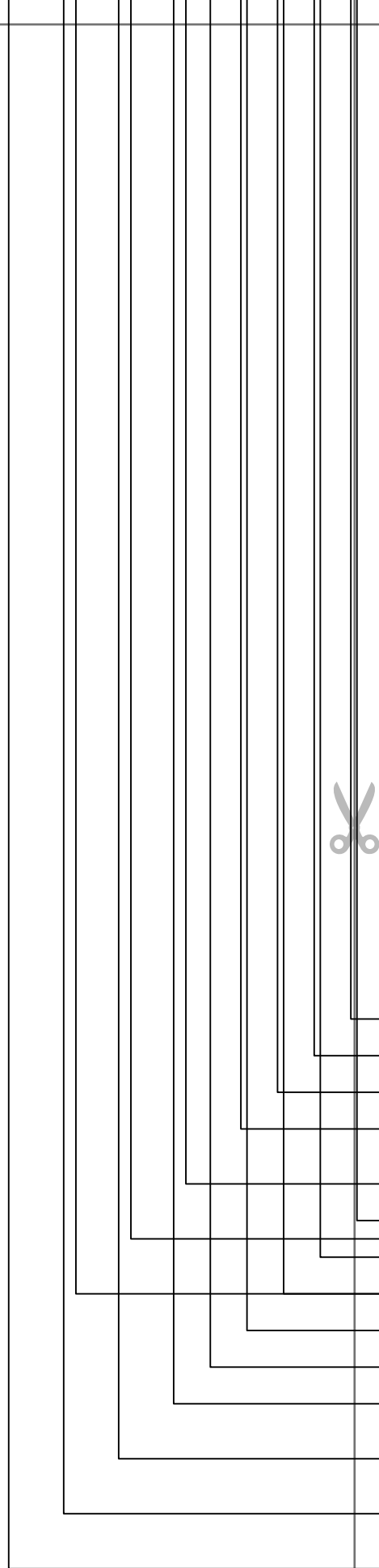
~~Size 10~~

**SKIRT**  
cut 2 on fold

Page 3C



Page 3D





Page 3E





Page 3F





Page 3G



Page 4A



Page 4B







Page 4C



This image shows a full-page template for a document or book. The page is white with a thin black border. In the center, the text "Page 4D" is printed in a large, dark grey font. Four pairs of scissors are positioned at the corners of the page, pointing towards the center, indicating where to cut. Specifically, there is a pair of scissors at the top center, one at the bottom center, one on the left edge near the middle, and one on the right edge near the middle. The page appears to be part of a larger set of materials.