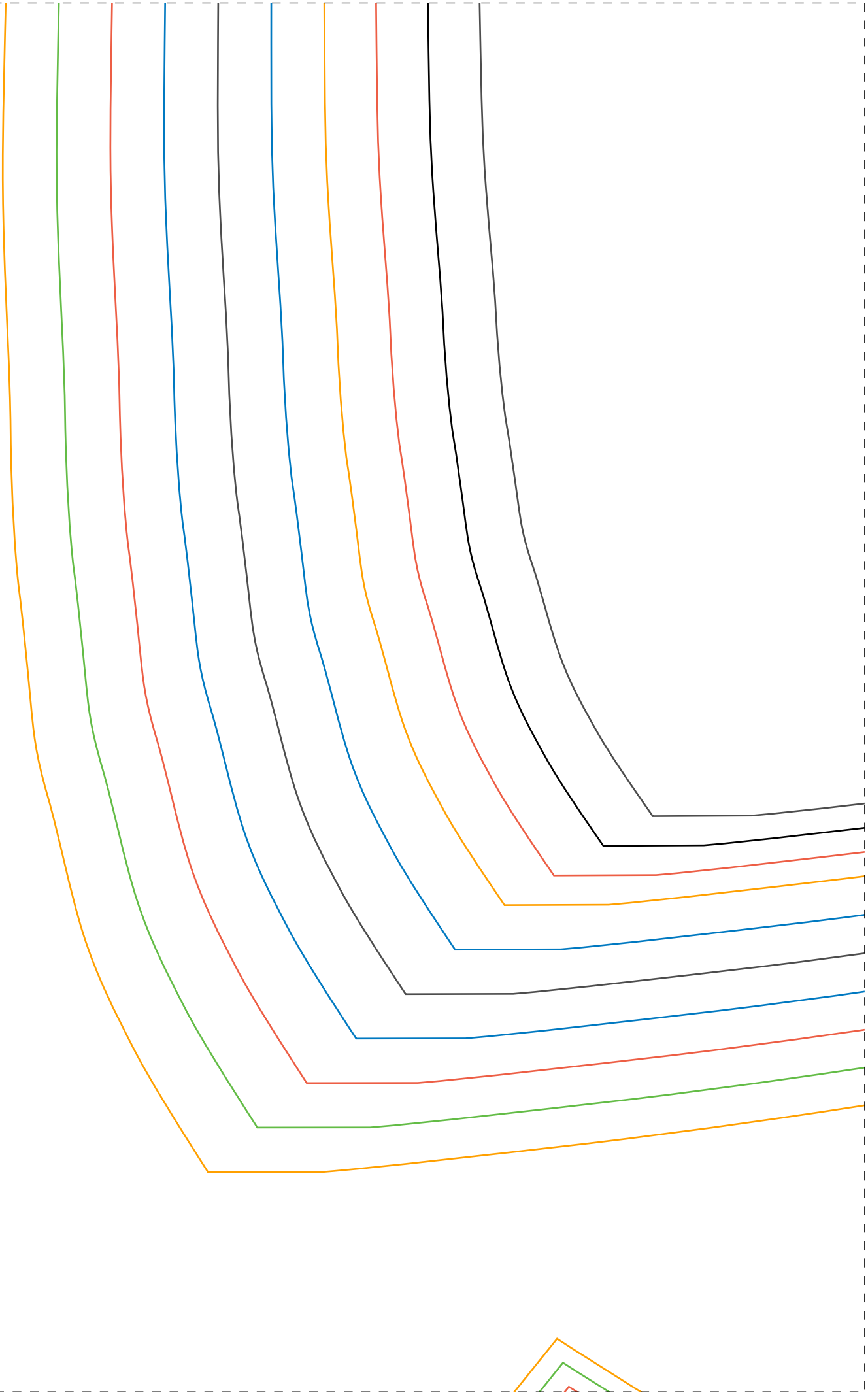
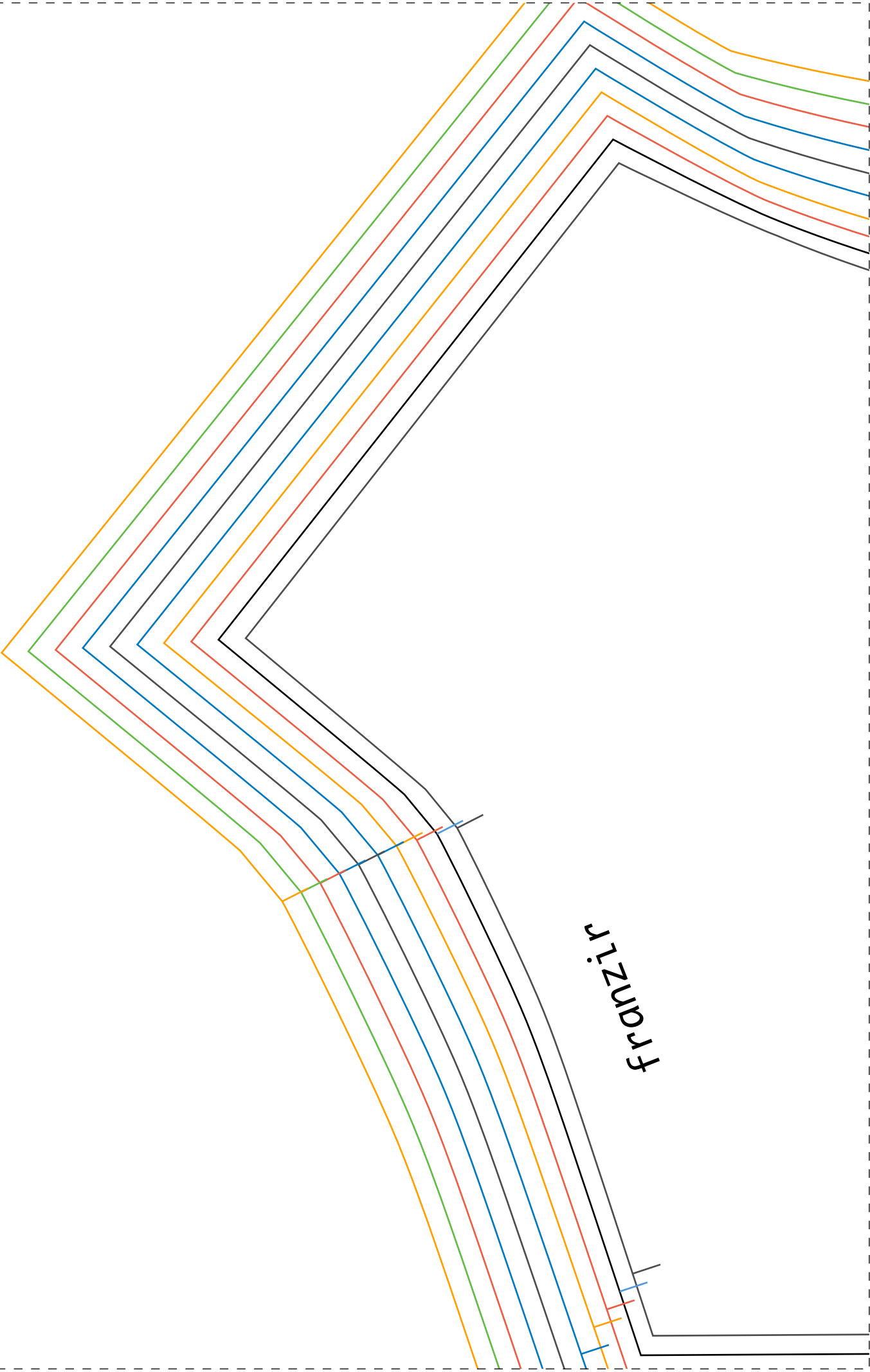
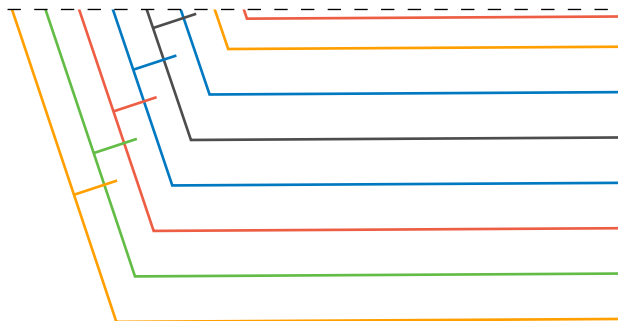
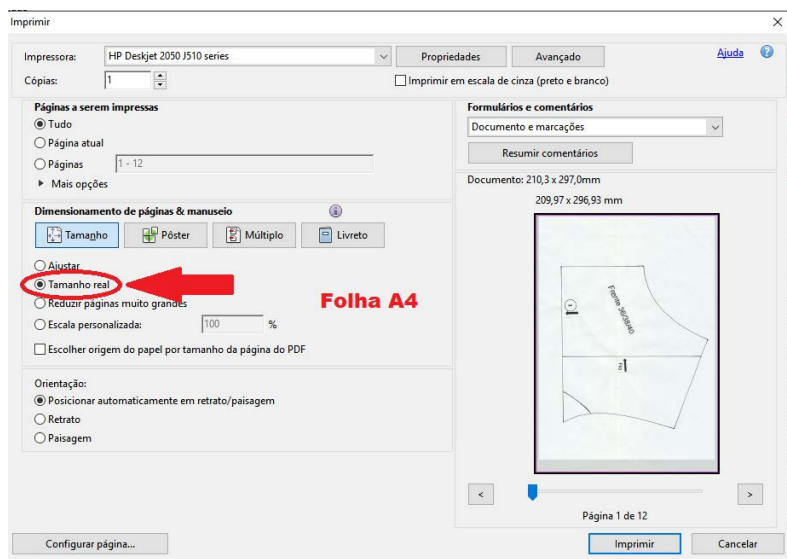


2-1







Para que o seu molde seja impresso de forma correta é preciso observar as configurações da impressora. Observe a imagem abaixo e configure sua impressora dessa forma. COLOQUE EM TAMANHO REAL

Não pode deixar ajustar à pagina.

No seu molde tem uma imagem de uma fita métrica de 5 cm. Confira com a fita métrica da sua casa de está dando certo os 5 cm. Se der certo é porque sua impressão ficou correta.



punho com azelhas
(sem trespasse)
4 x tecido entretelar



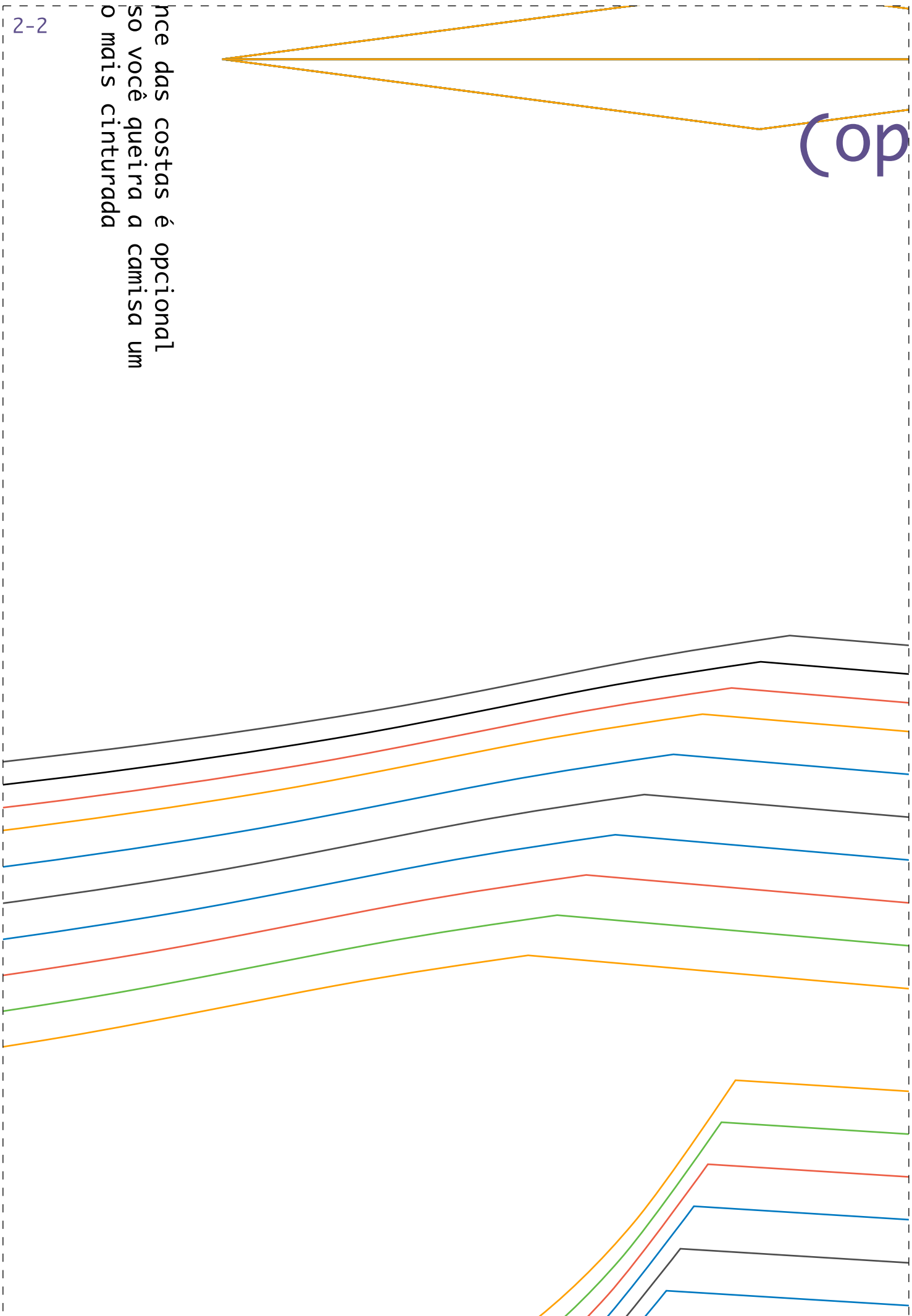
Tecido do



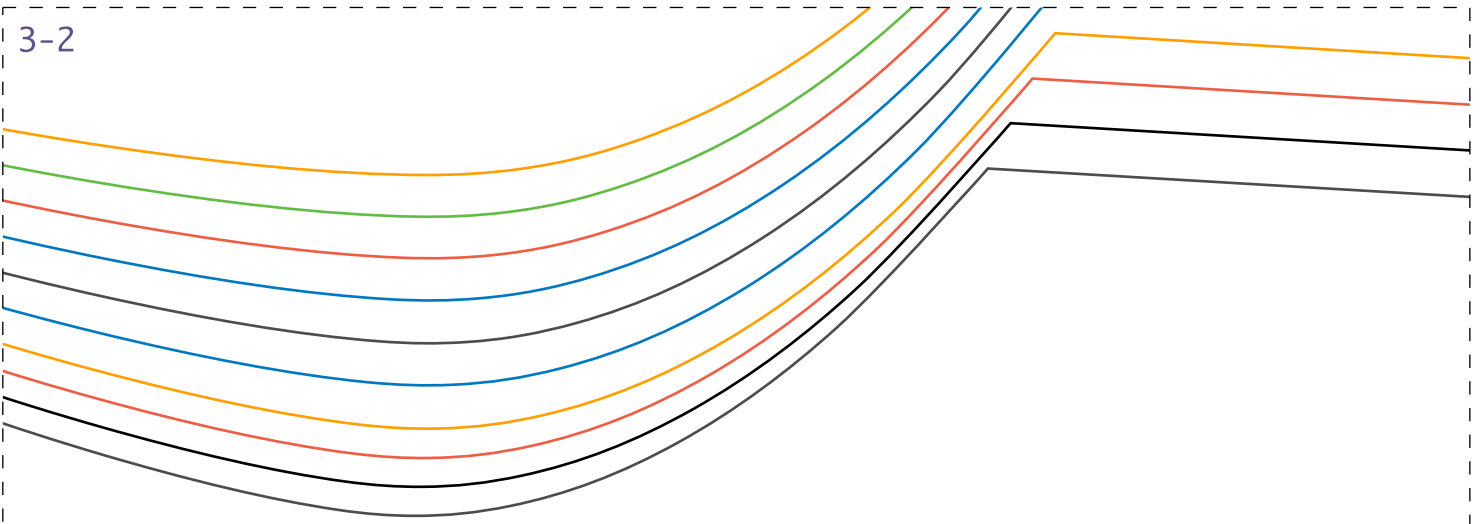
Cop

nce das costas é opcional
so você queira a camisa um
o mais cinturada

2-2

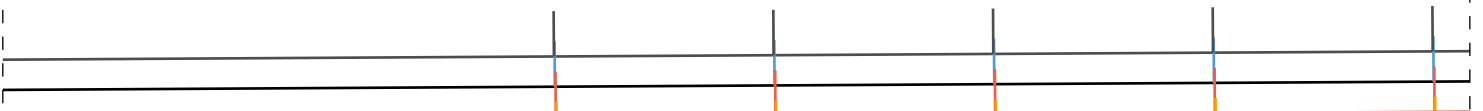


3-2



op.

cm azelhas



ESSE MOLDE POSSUI MARGEM DE COSTURA DE 1 CM

TECIDOS INDICADOS PARA ESSE MODELO:

Para camisas e blusas femininas podemos contar com inúmeros tecidos.
Vamos classificar por ocasião;

Blusas e camisas para o dia a dia: Tricoline, viscose, viscolinho, crepe georgete, lese, musseline.

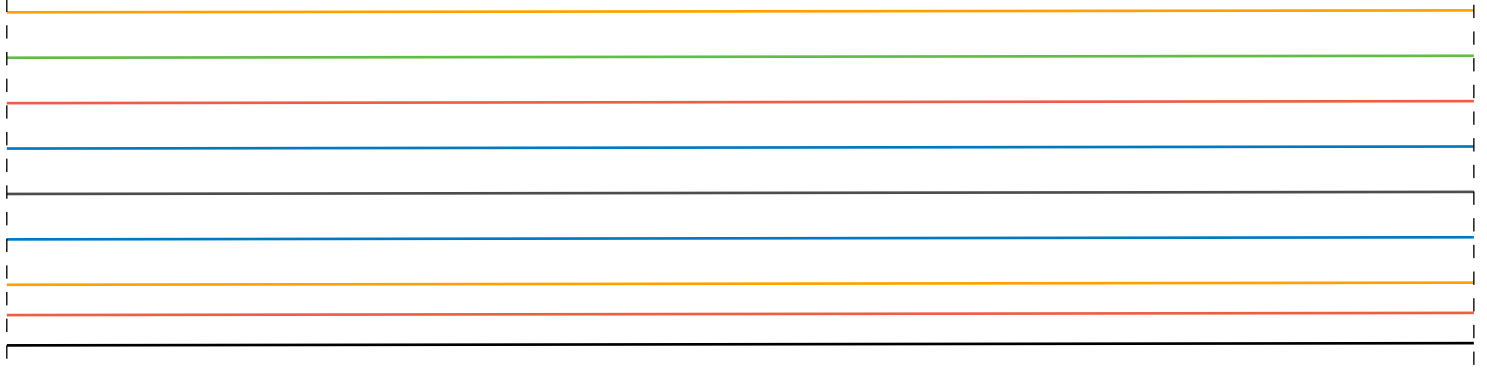
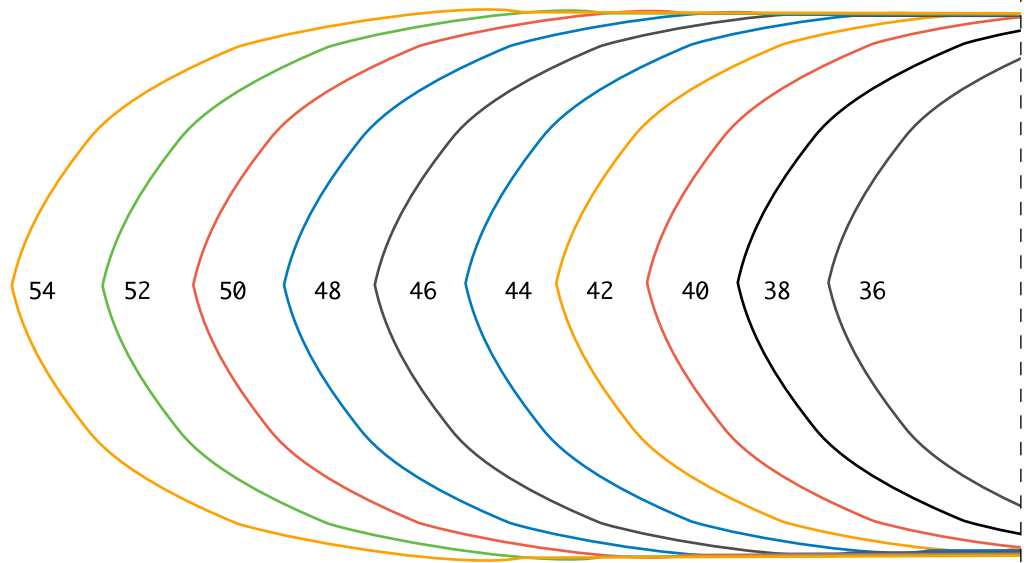
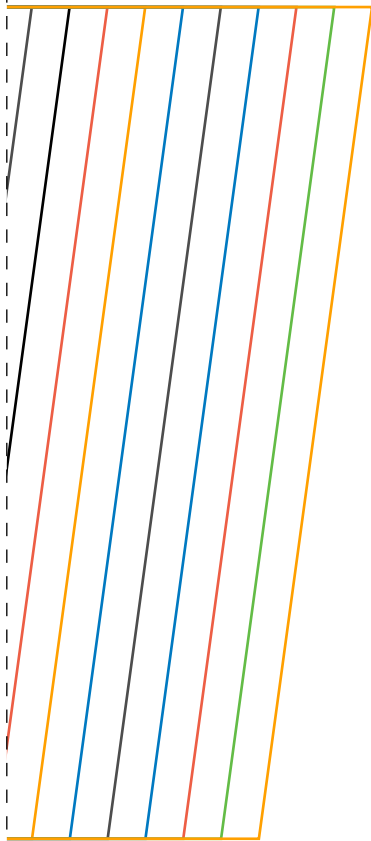
Peças mais chiques: cetim, cambraia de linho, cambraia de algodão, chifon, seda, crepe lorraine.

QUANTIDADE RECOMENDADA DE TECIDO:

Para tamanhos menores de **36 a 44 aproximadamente 1,50 metros**

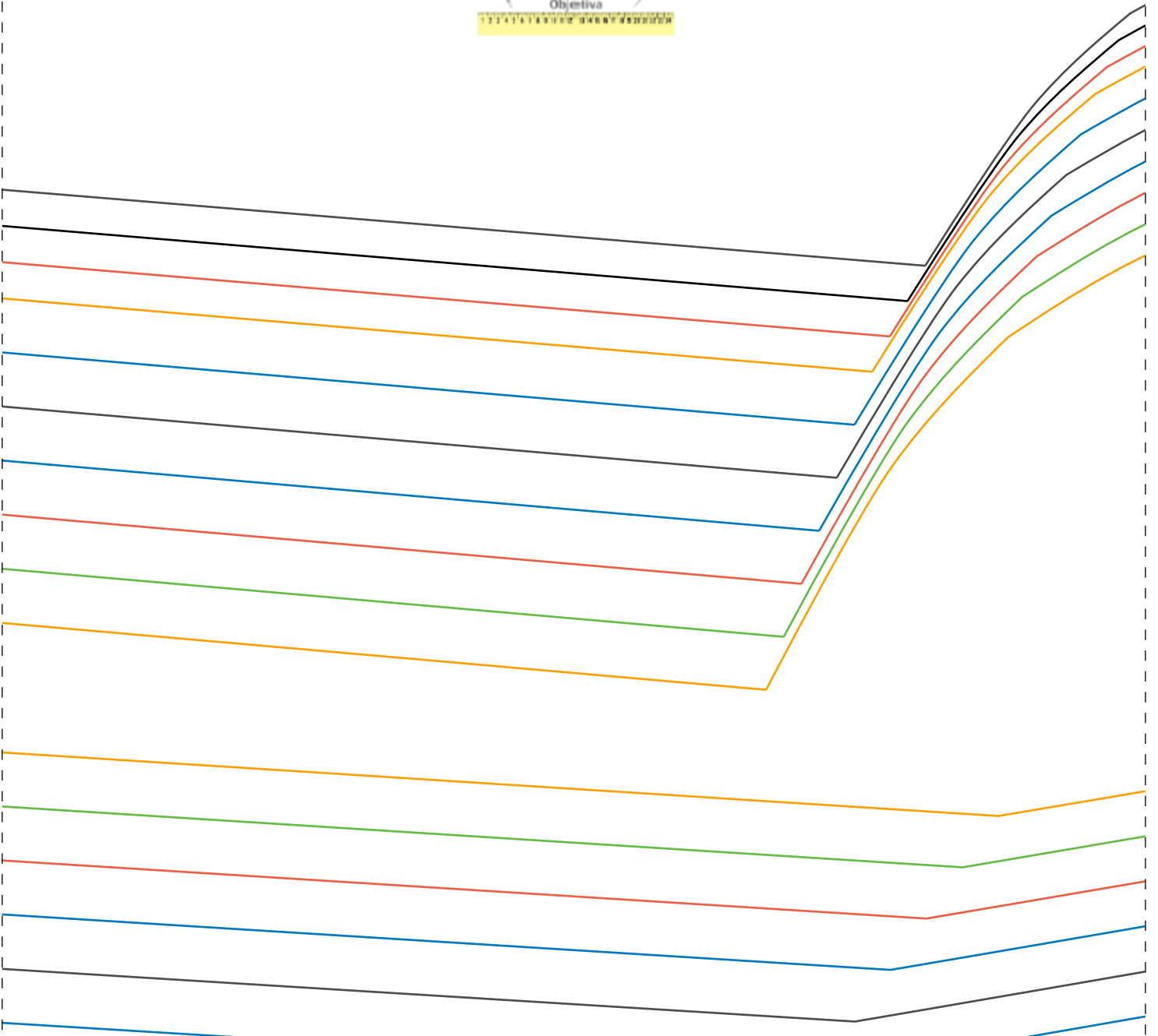
Para tamanhos maiores de **46 a 54 aproximadamente 2,30 metros**

1-3



brado

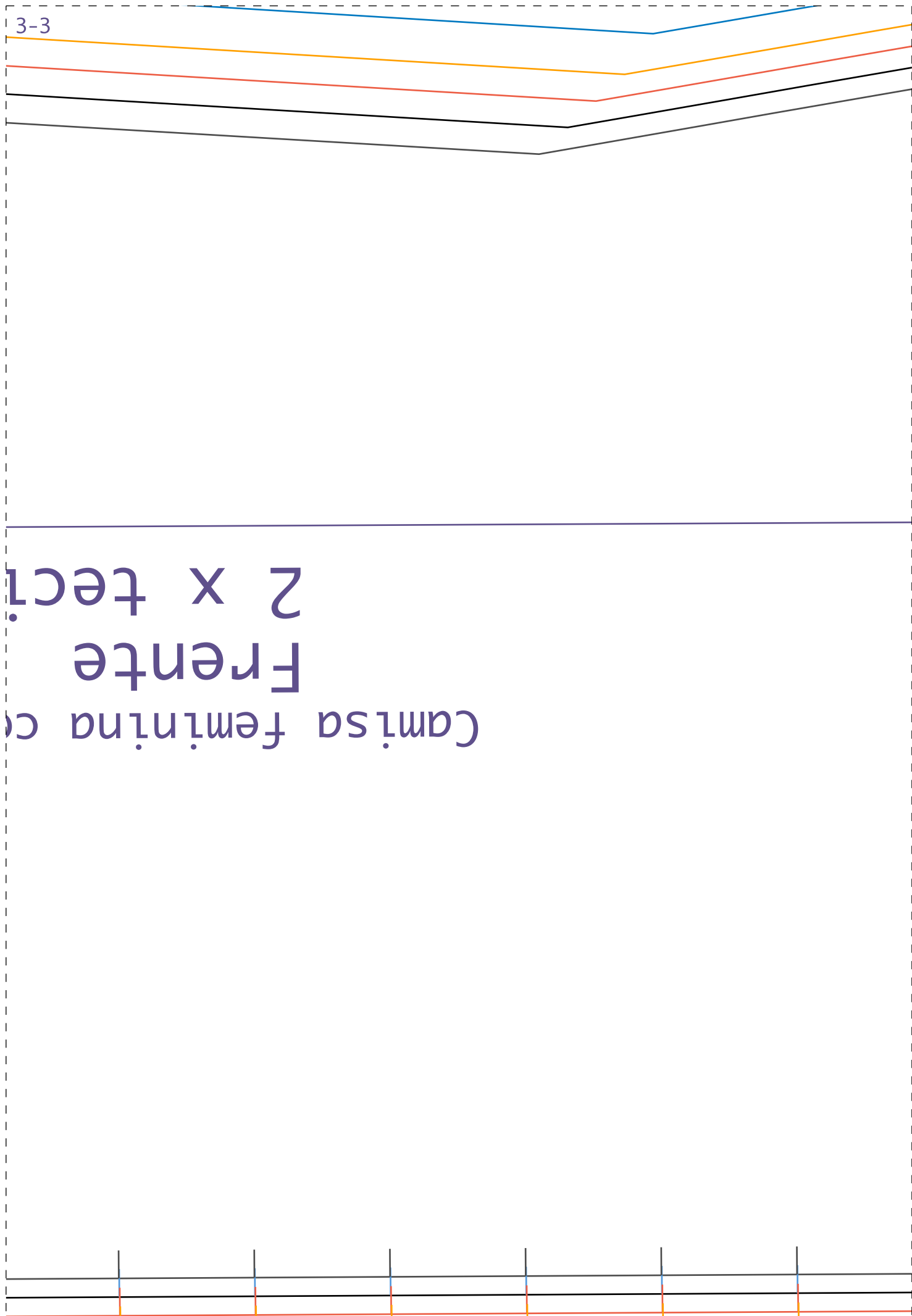
Costas 1 x tecido (dobrada)



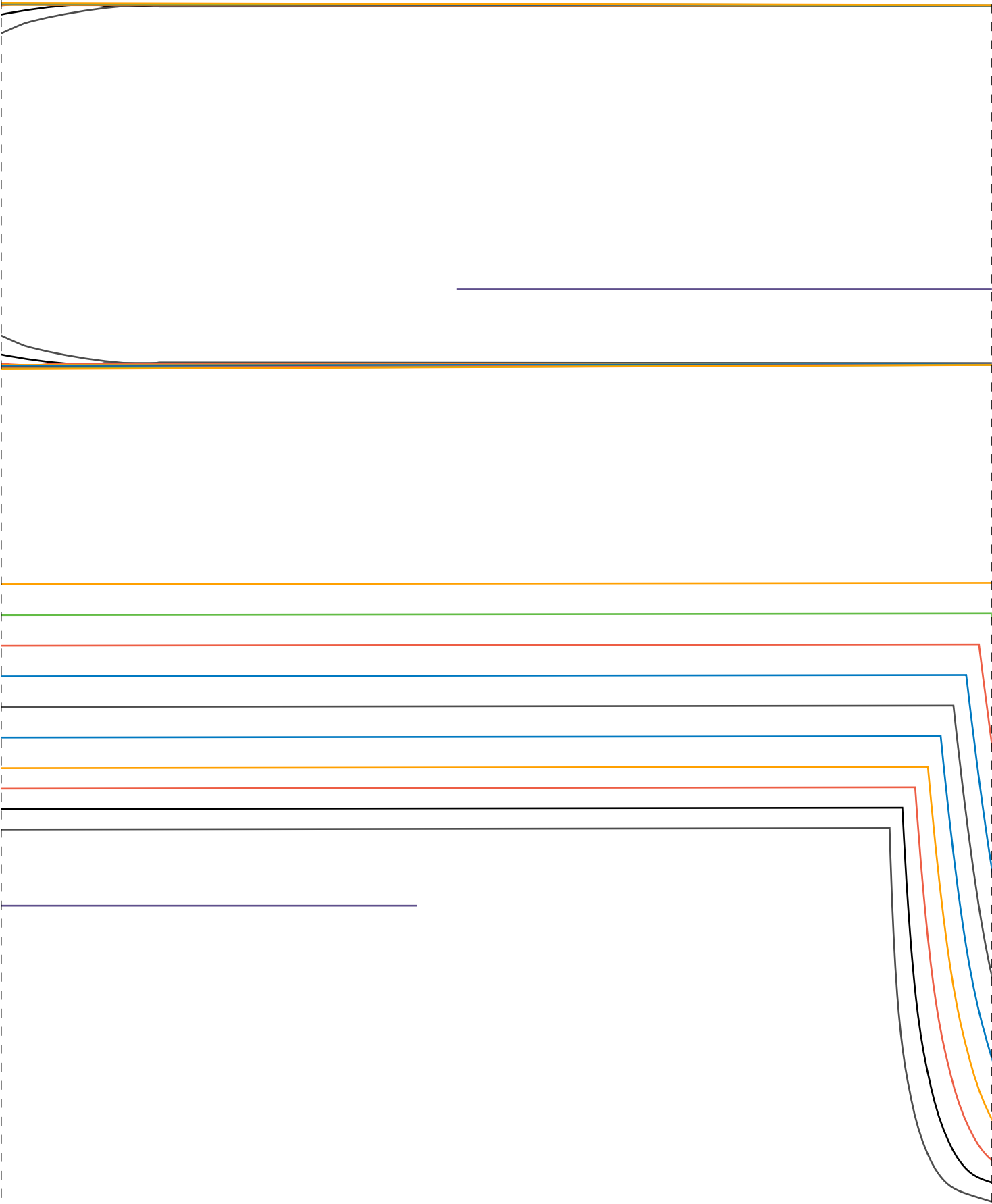
Camisa feminina c

Frente

2 x tec.



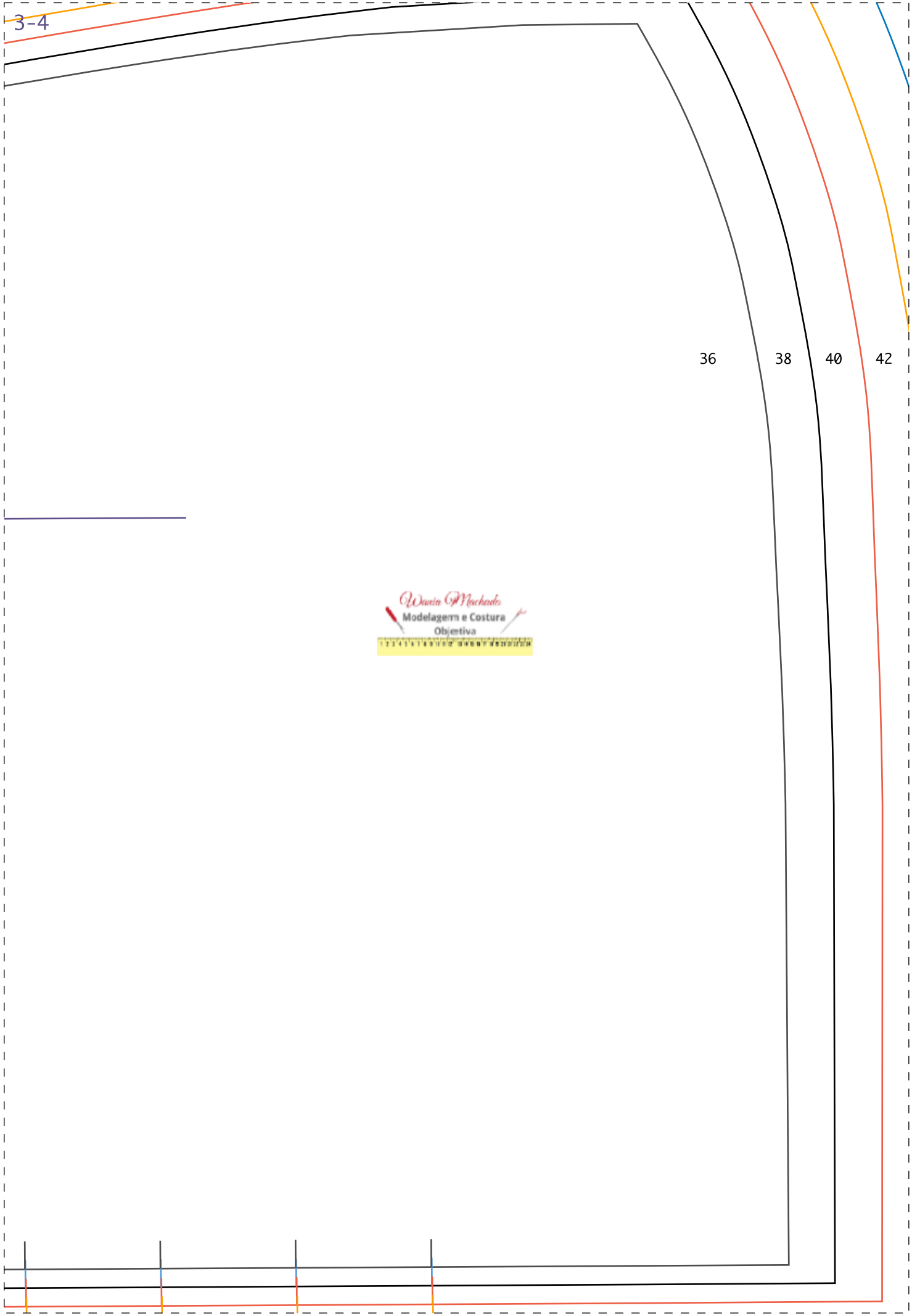
[illegible]



2-4

Camisa feminina com azelhas
carcela
2 x tecido





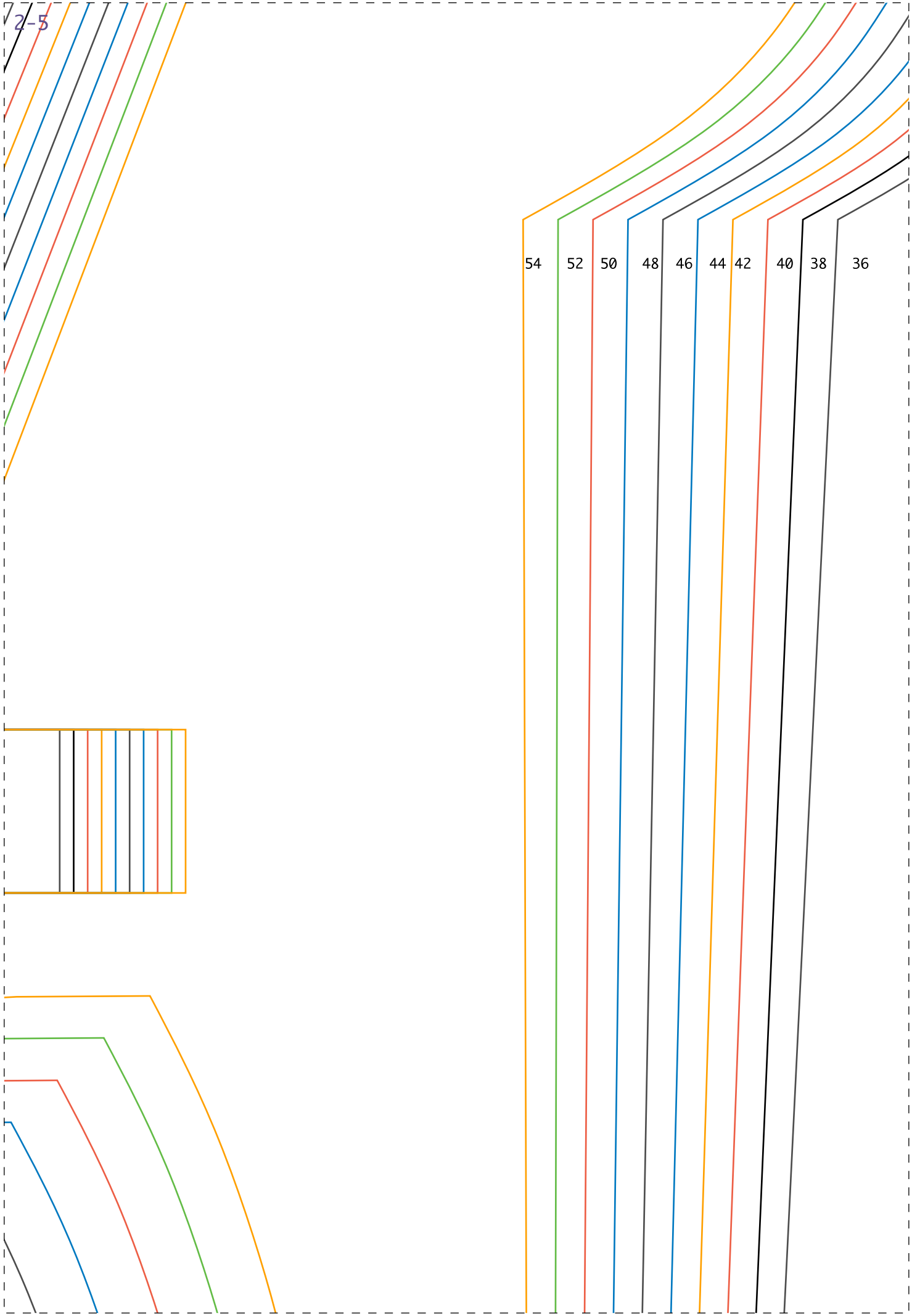
Sem acréscimo de costura, justo no corpo.

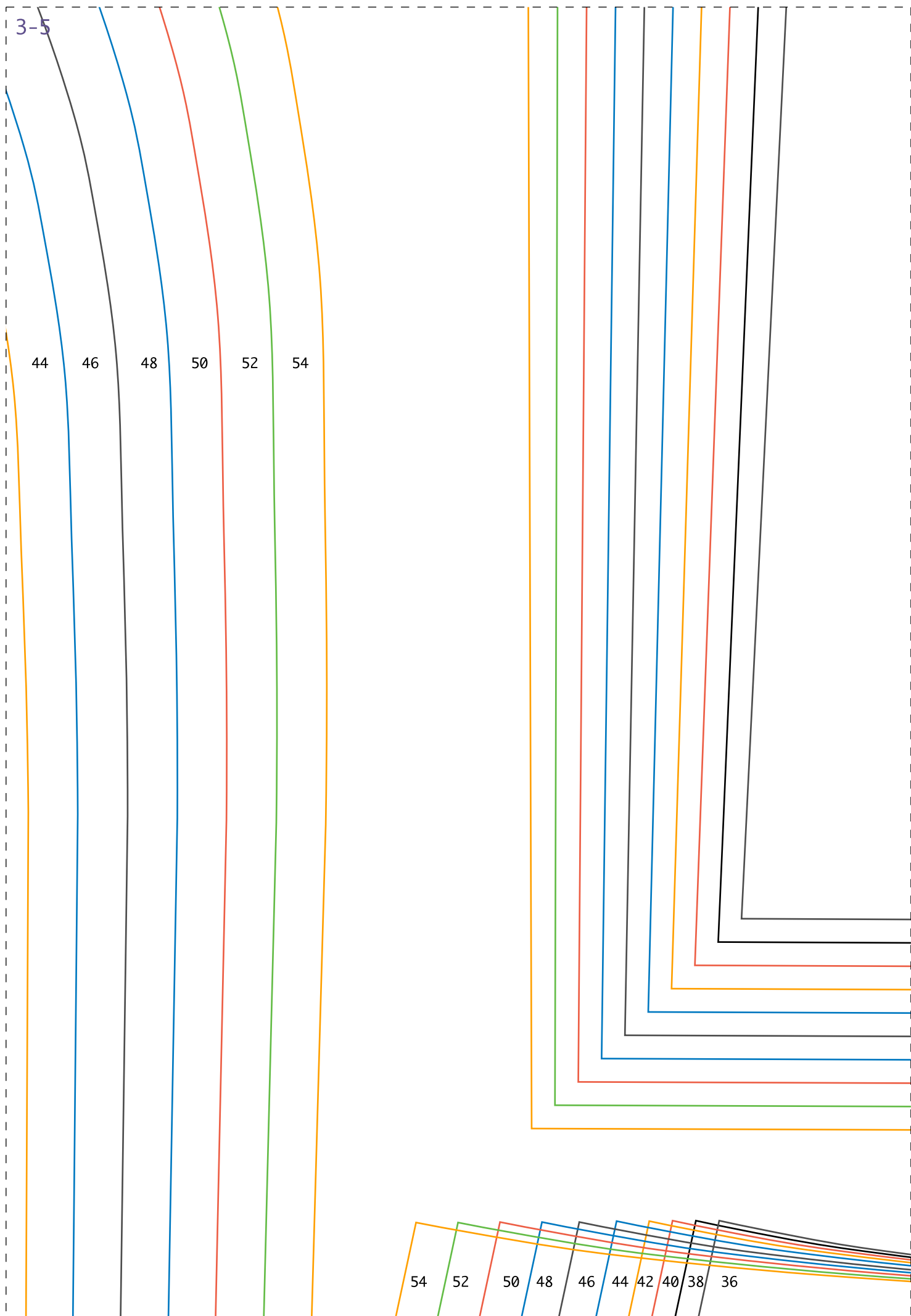
Para modelos soltos no corpo é necessário dar folgas nos
moldes.

Tamanho	Busto	Cintura	Quadril
36	86	68	98
38	90	72	102
40	94	76	106
42	98	80	110
44	104	86	116
46	110	92	122
48	116	98	128
50	122	104	134
52	128	110	140
54	134	116	146

Camisa feminina com azelhas
Babado da gola
1 x tecido







4-5



dobrar e franzir



embeber

Camisa feminina com azelhas

Manga
2 x tecido

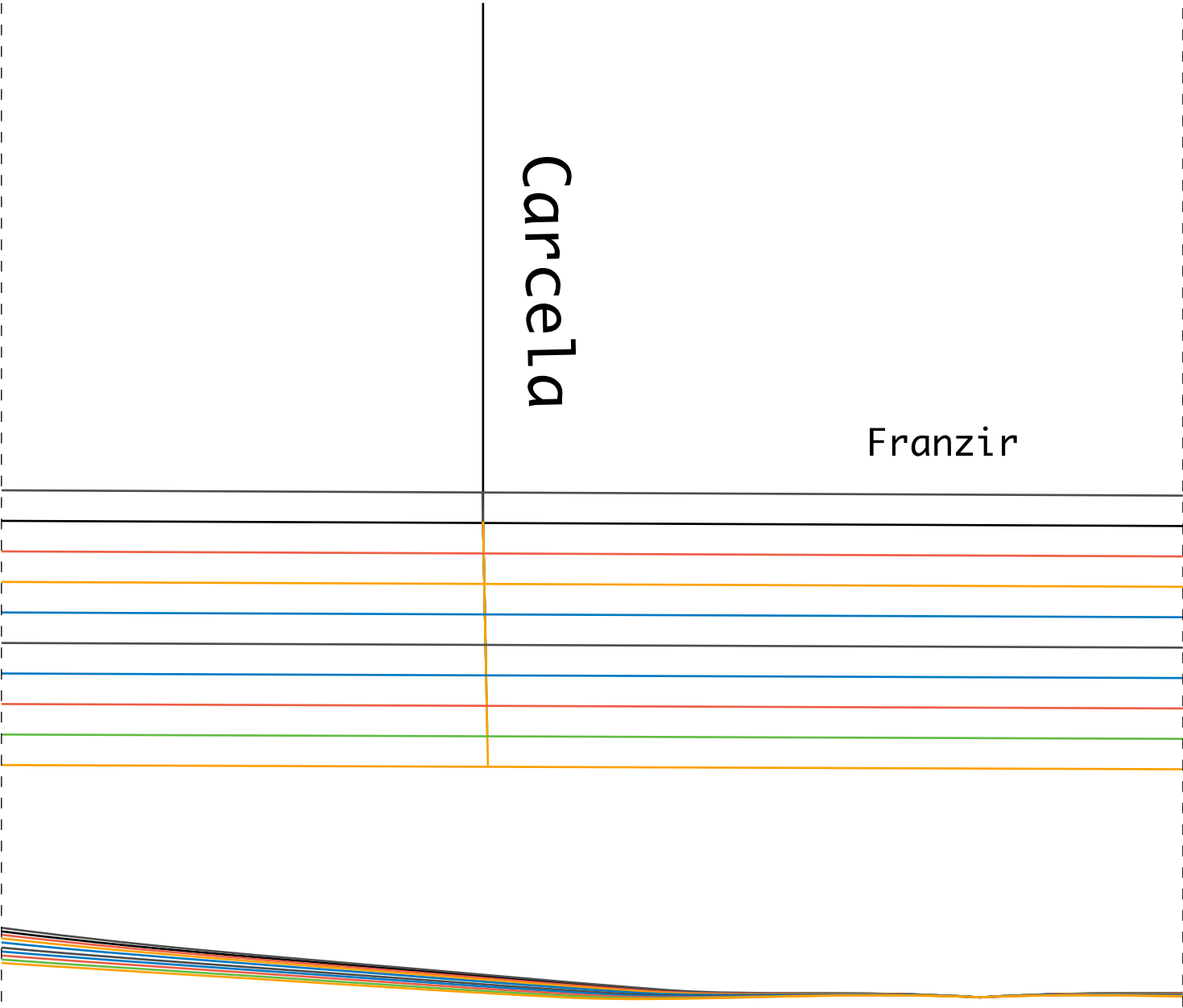
Costas

2-6



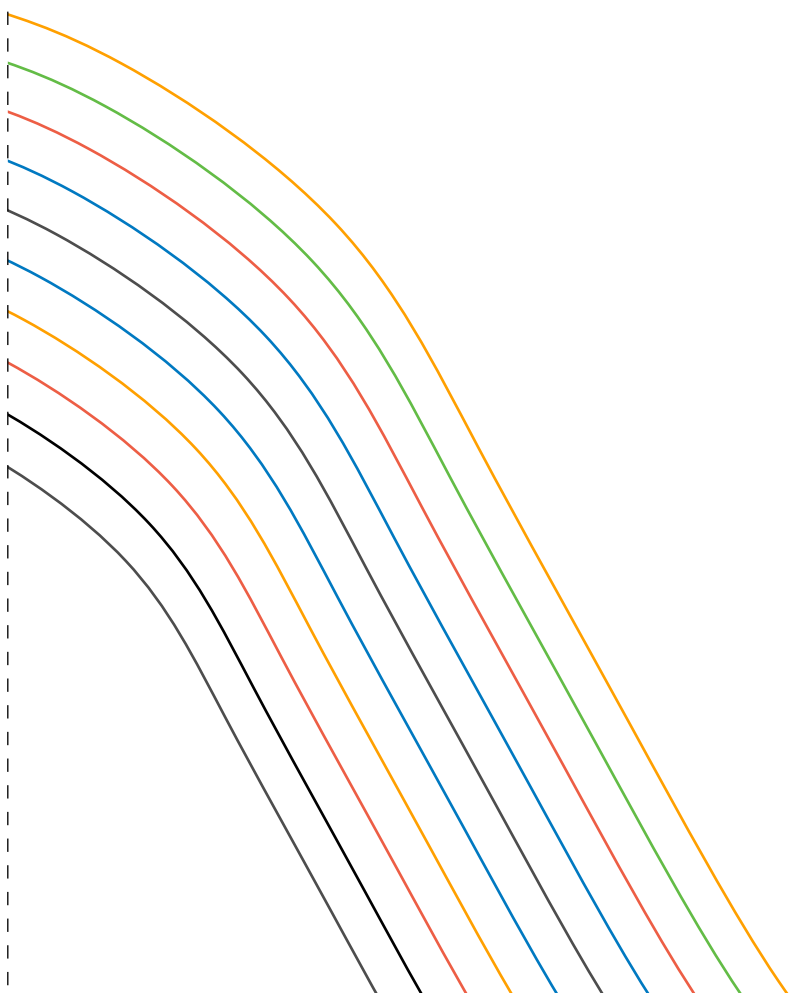
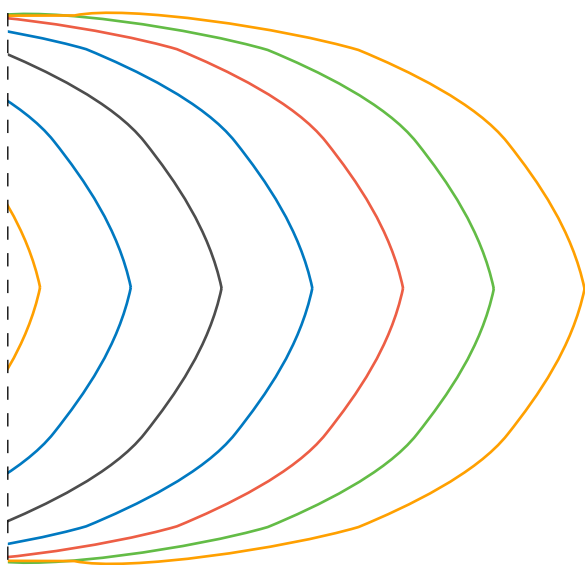
Carcela

Franzir

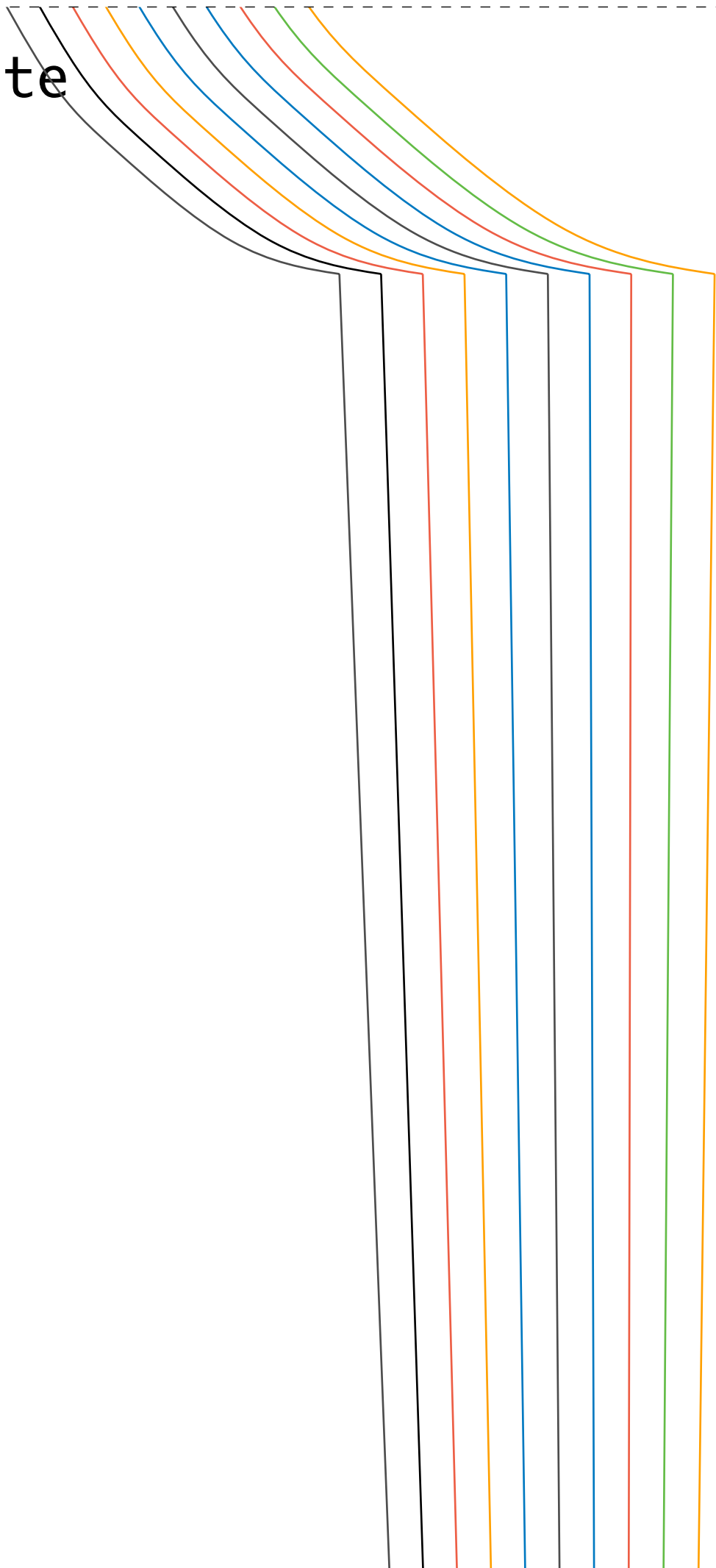




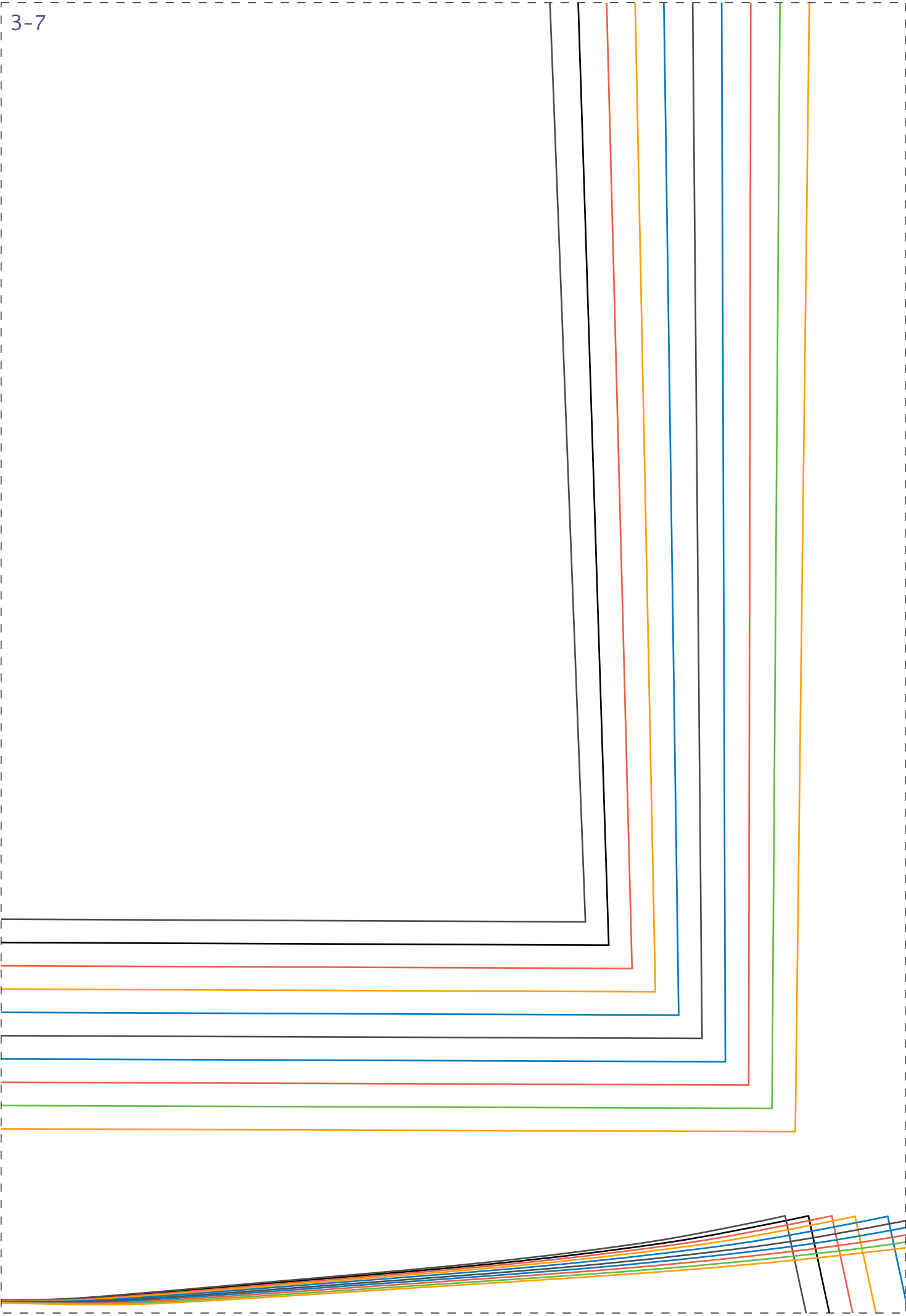
1-7



Frente



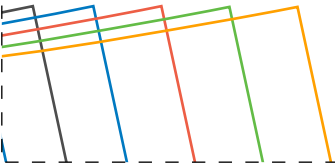
3-7



4-7







4-8

