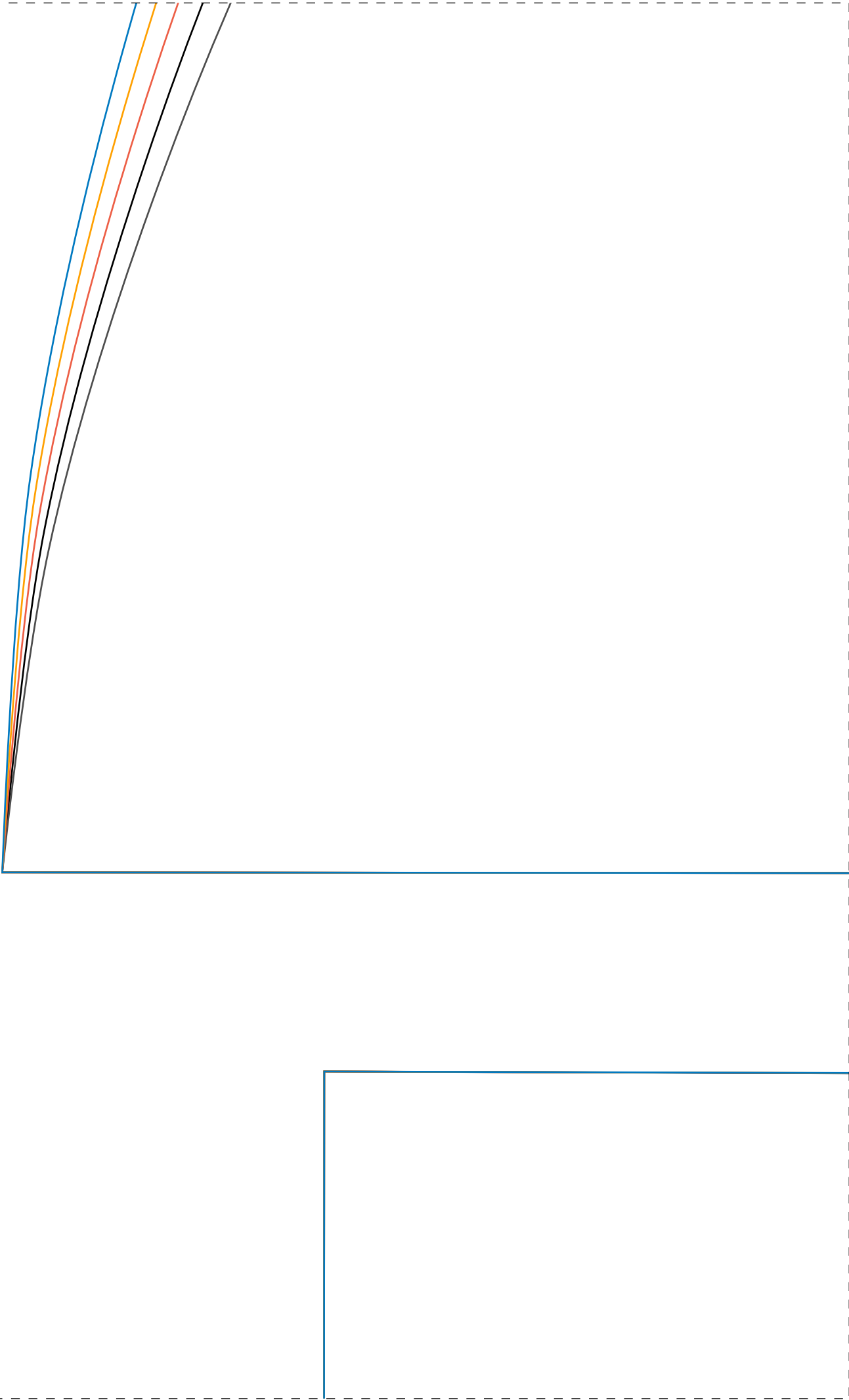
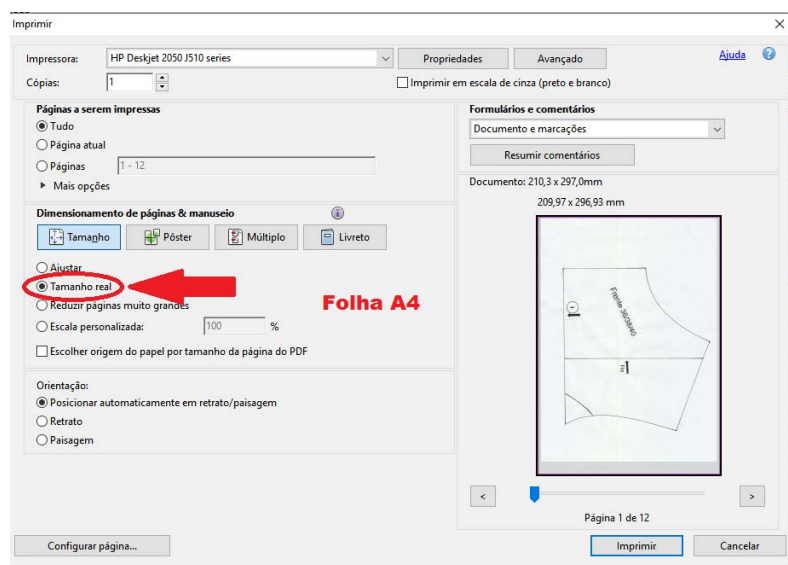




2-1





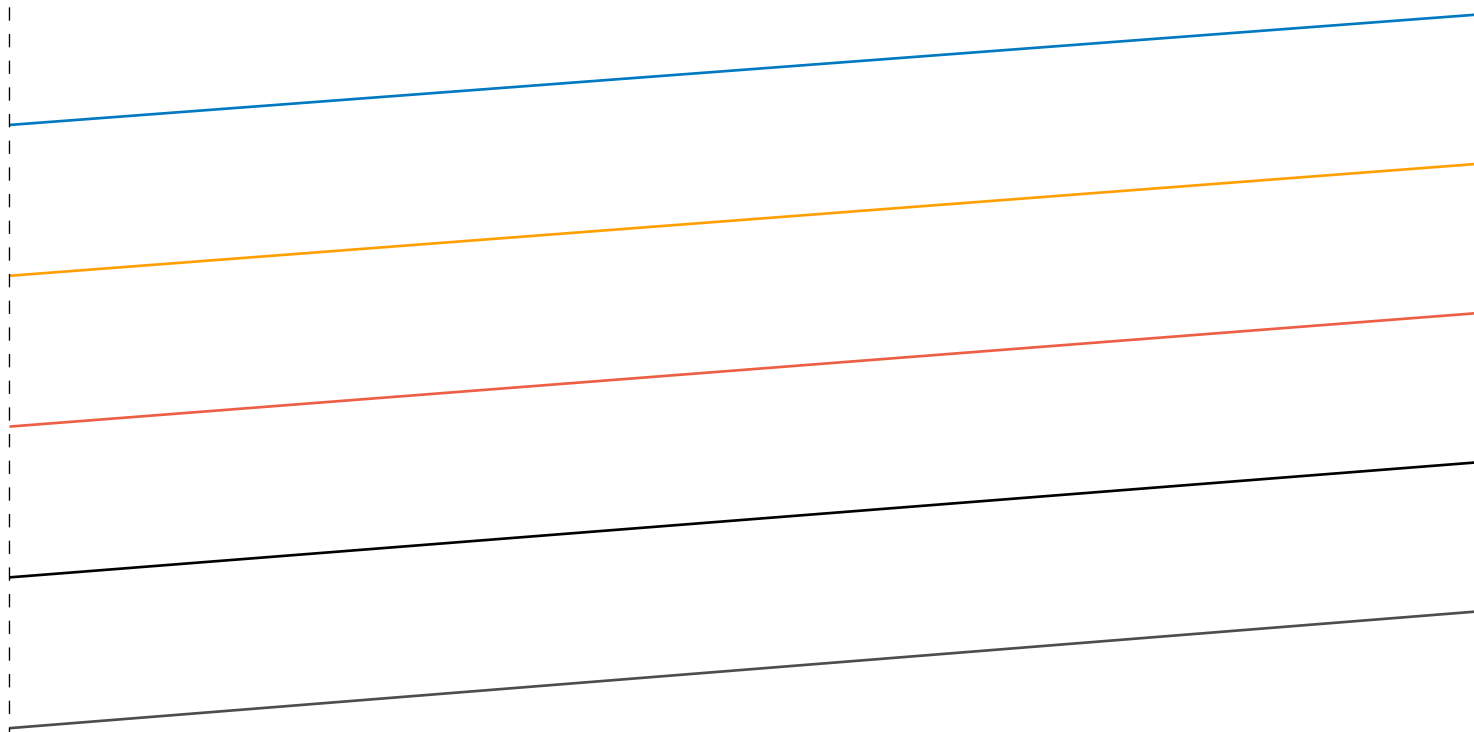
Para que o seu molde seja impresso de forma correta é preciso observar as configurações da impressora. Observe a imagem abaixo e configure sua impressora dessa forma. COLOQUE EM TAMANHO REAL

Não pode deixar ajustar à pagina.

No seu molde tem uma imagem de uma fita métrica de 5 cm. Confira com a fita métrica da sua casa de está dando certo os 5 cm. Se der certo é porque sua impressão ficou correta.



1-2



1 x tecido

Sala Frente

2-2

Vestido soltinho decote V - 36 a 44
Saia Costas
1 x tecido



ESSE MOLDE POSSUI MARGEM DE COSTURA DE 1 CM

TECIDOS INDICADOS PARA ESSE MODELO:

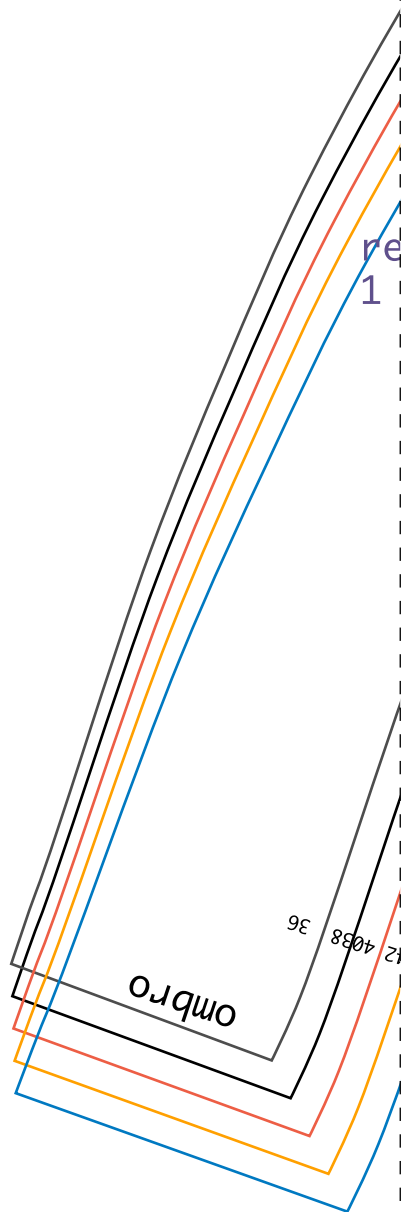
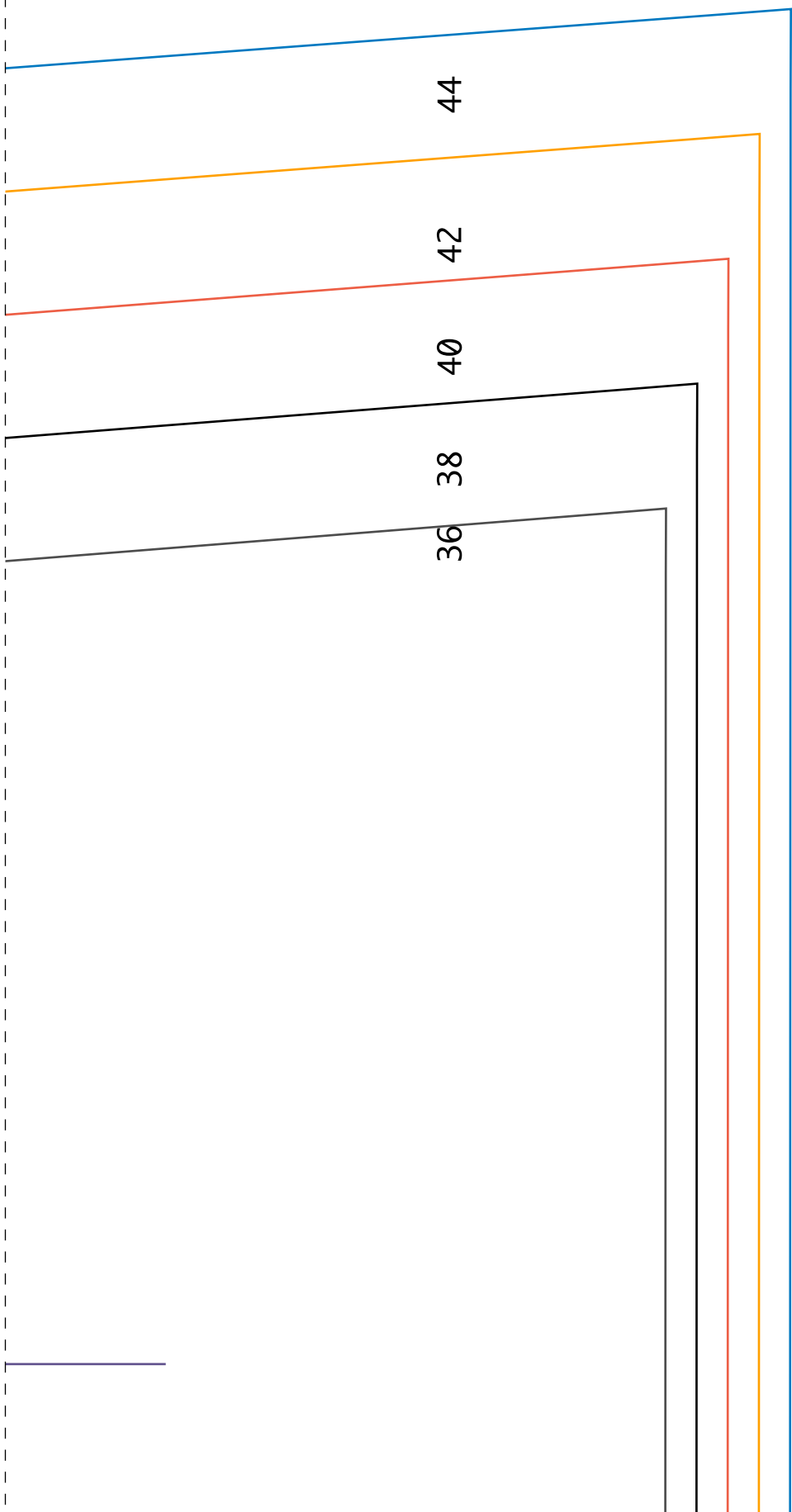
**Viscose, crepe georgete, crepe lorraine, lese, seda pluma, viscolinho,
crepe bolha, seda closs entre outros.**

QUANTIDADE RECOMENDADA DE TECIDO:

Para tamanhos menores de 36 a 44 aproximadamente 1,50 metros

Para tamanhos maiores de 46 a 54 aproximadamente 2,00 metros

1-3





© 2013 Wania Machado. All rights reserved. No part of this publication may be reproduced without prior written permission from the author.

Four vertical lines for handwriting practice, colored from left to right: black, red, orange, and blue.

Four slanted lines for handwriting practice, colored from top to bottom: orange, red, black, and black.

Four slanted lines for handwriting practice, colored from left to right: black, black, red, and orange.



Q4
a 44

3-3

36

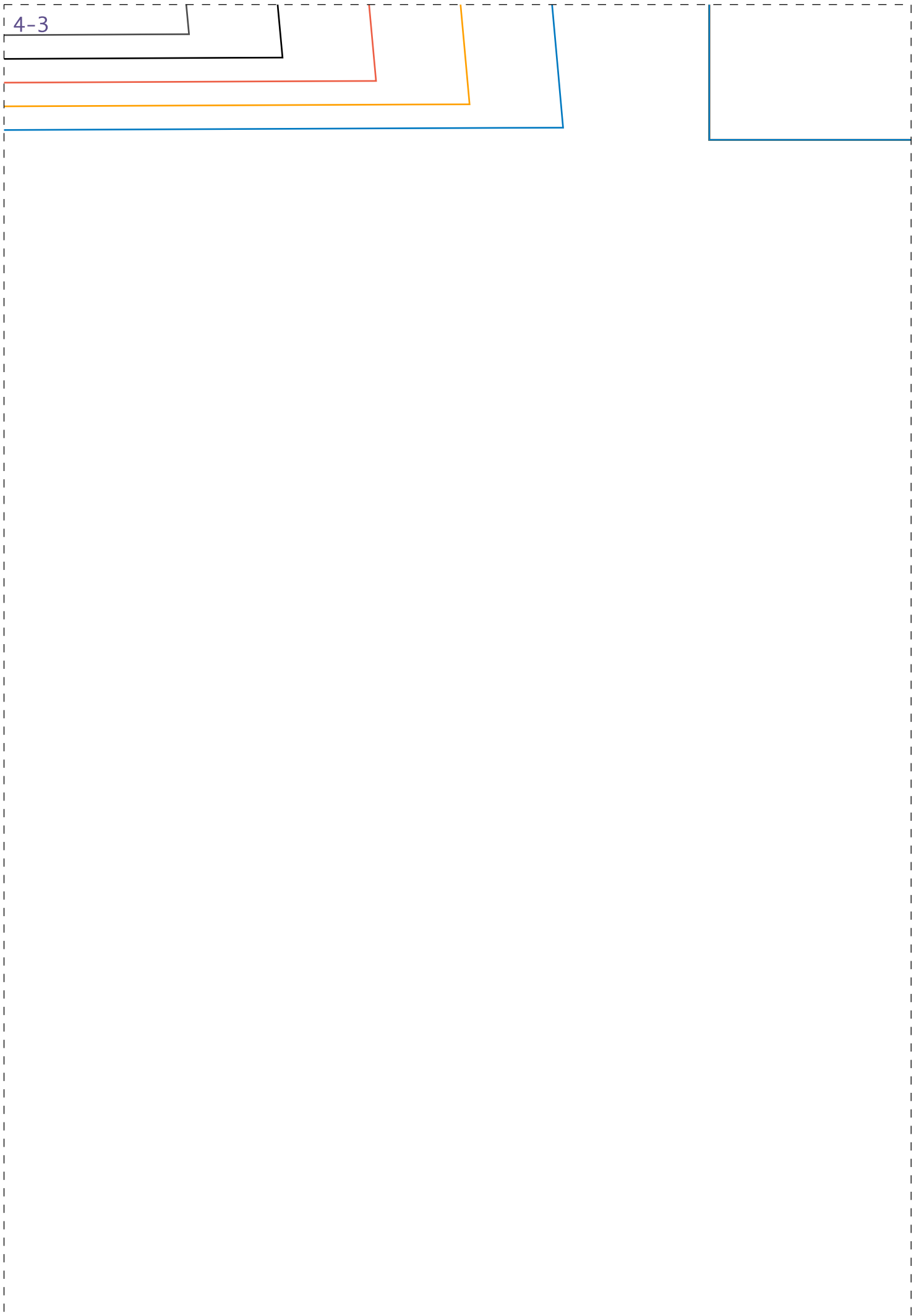
38

40

42

44

4-3



1-4

tecido dobrado

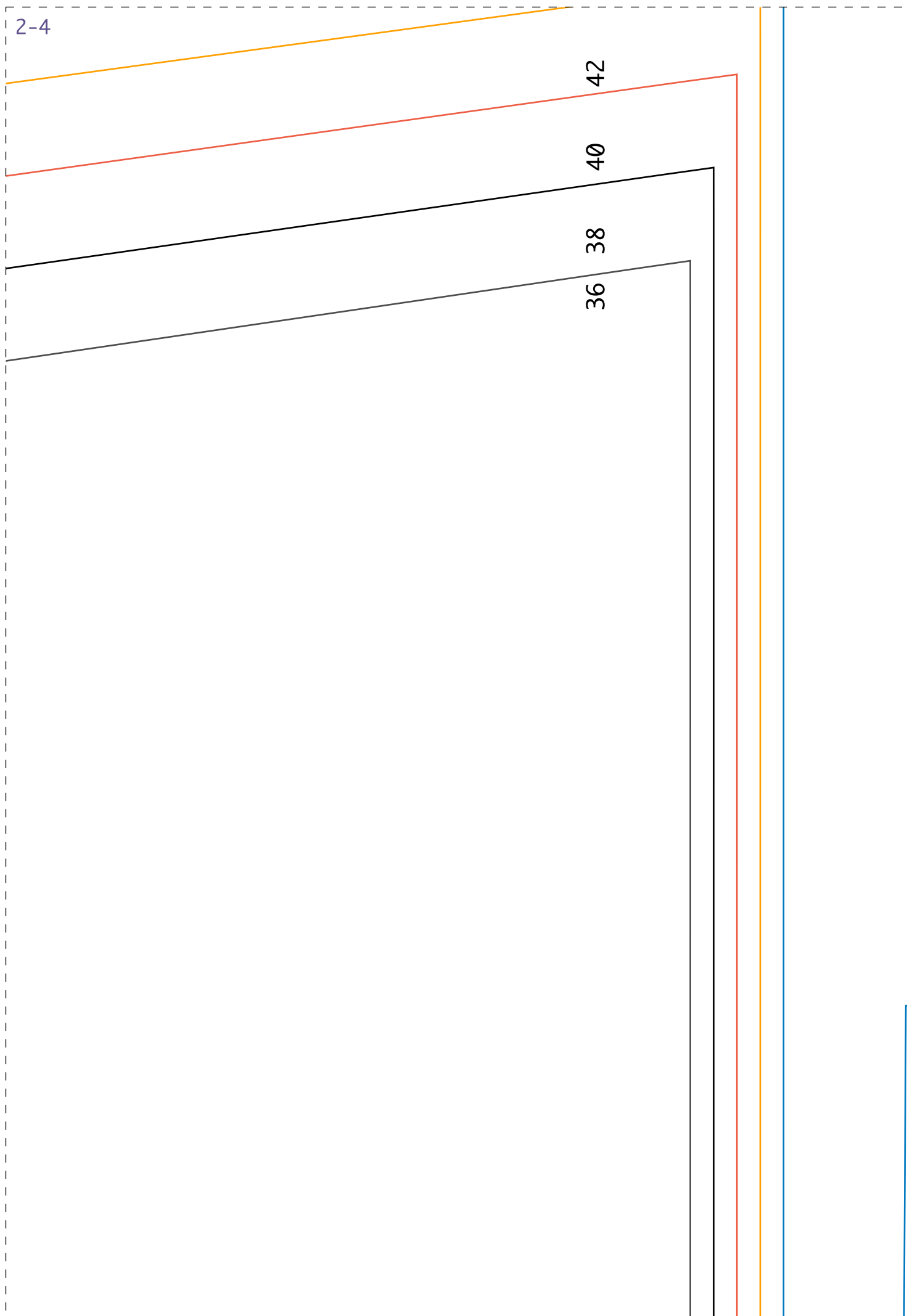
vel da frente
x tecido

Revel das costas
1 x tecido

44 42 40 38 36

44

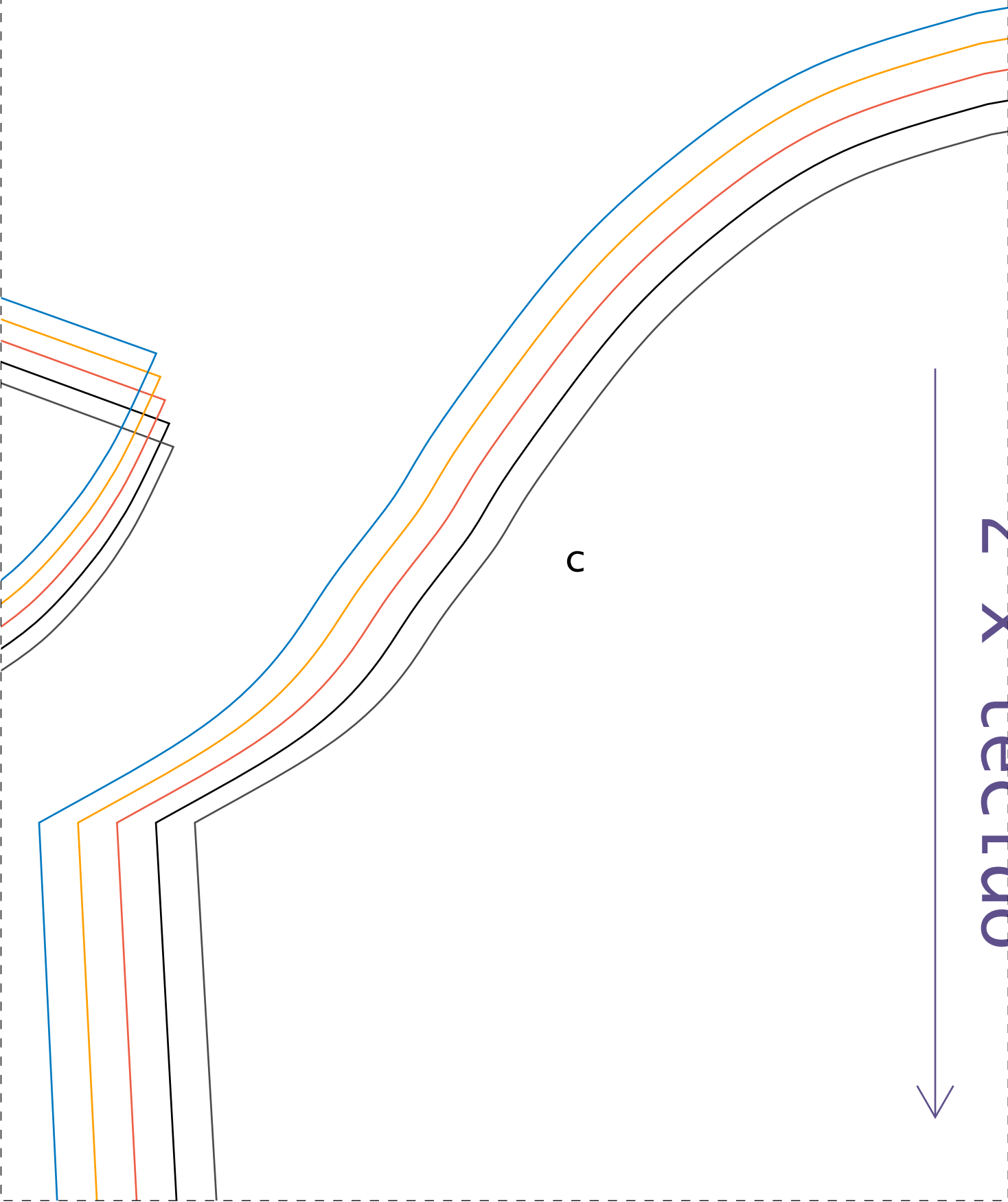
2-4



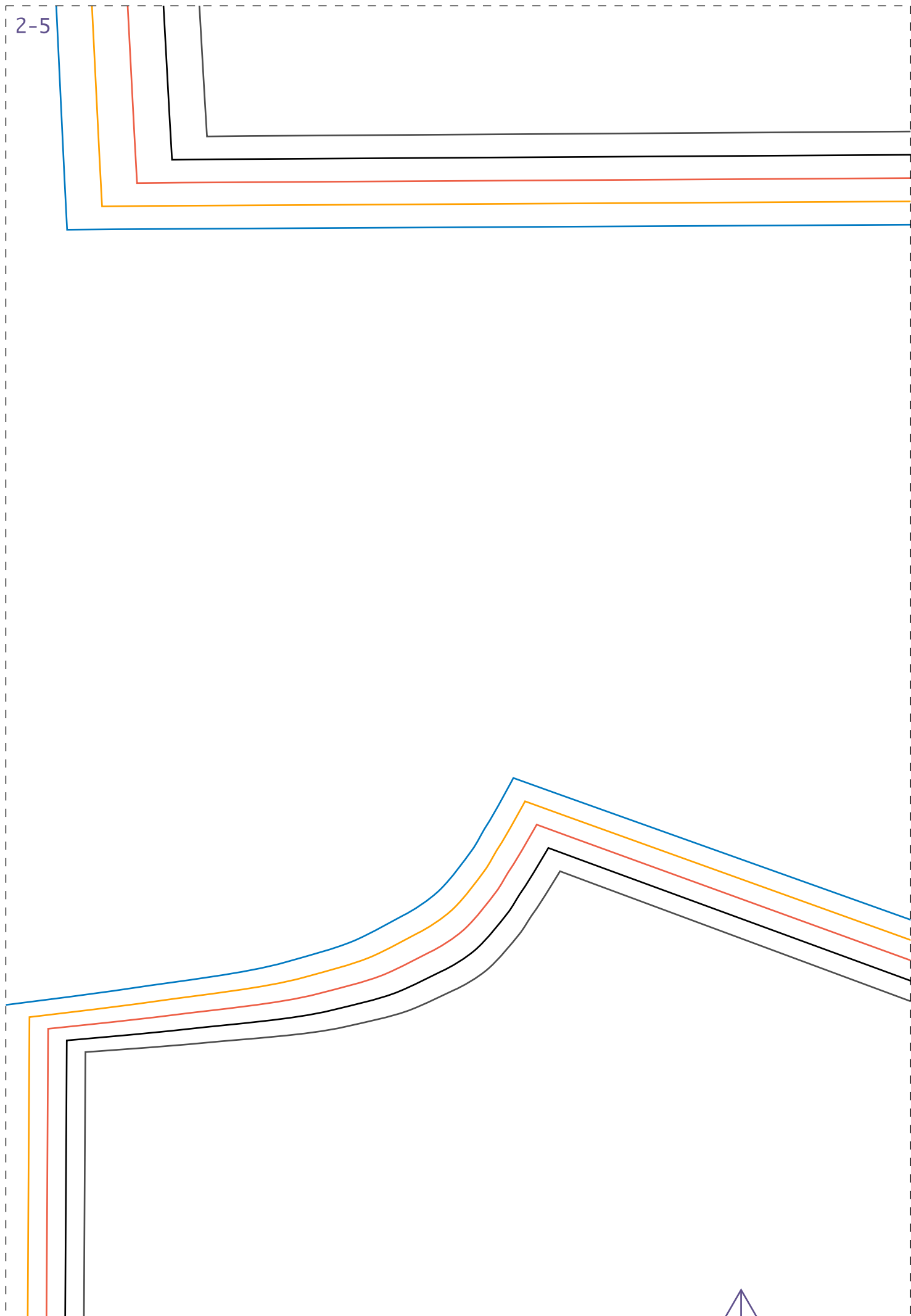
Vestido soltinho decote V - 36
Babado frente e cost
2 x tecido

Tecido dobrado

--	--	--	--	--

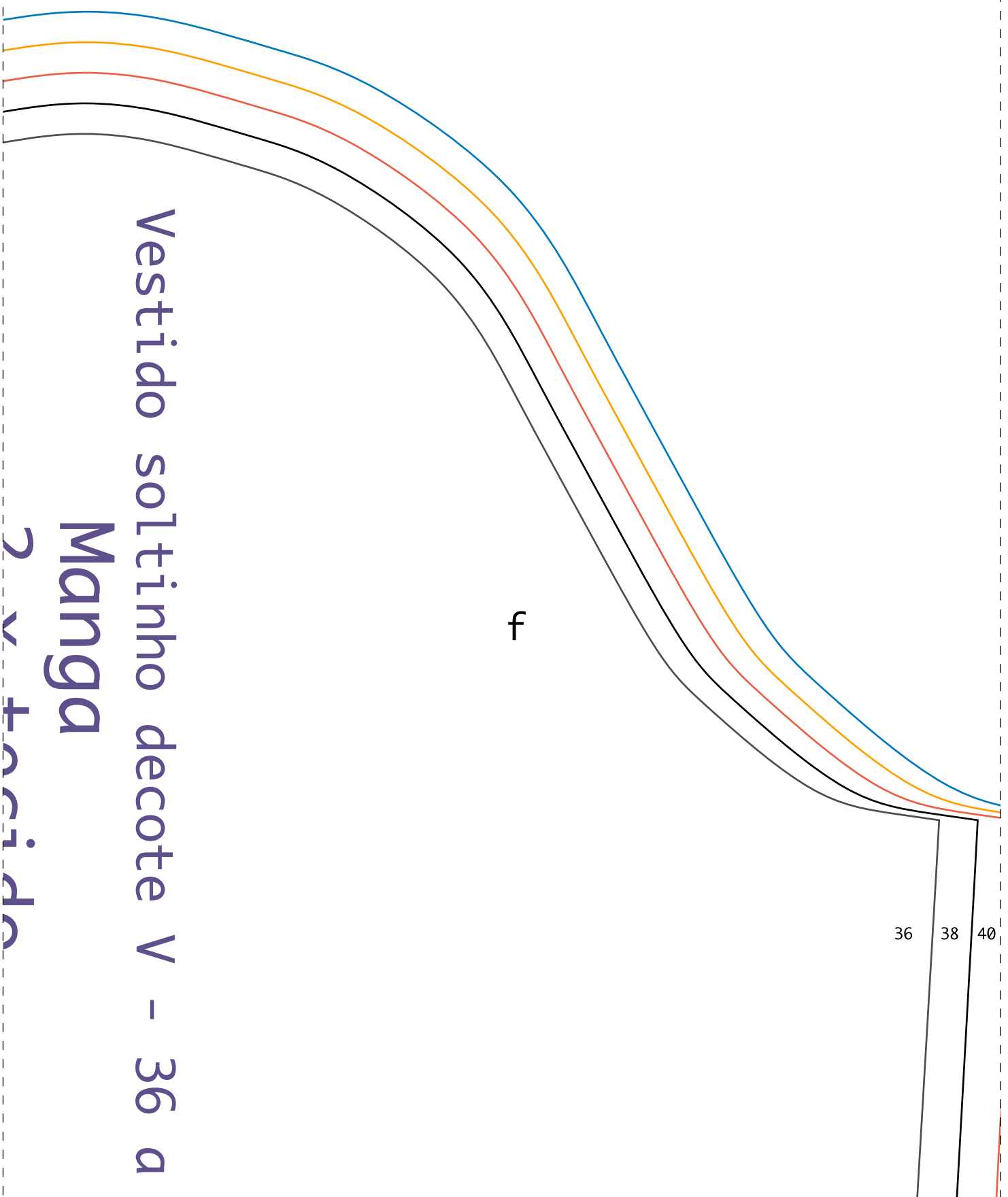


2-5



Vestido soltinho decote V - 36 a 44
Costas
1 x tecido



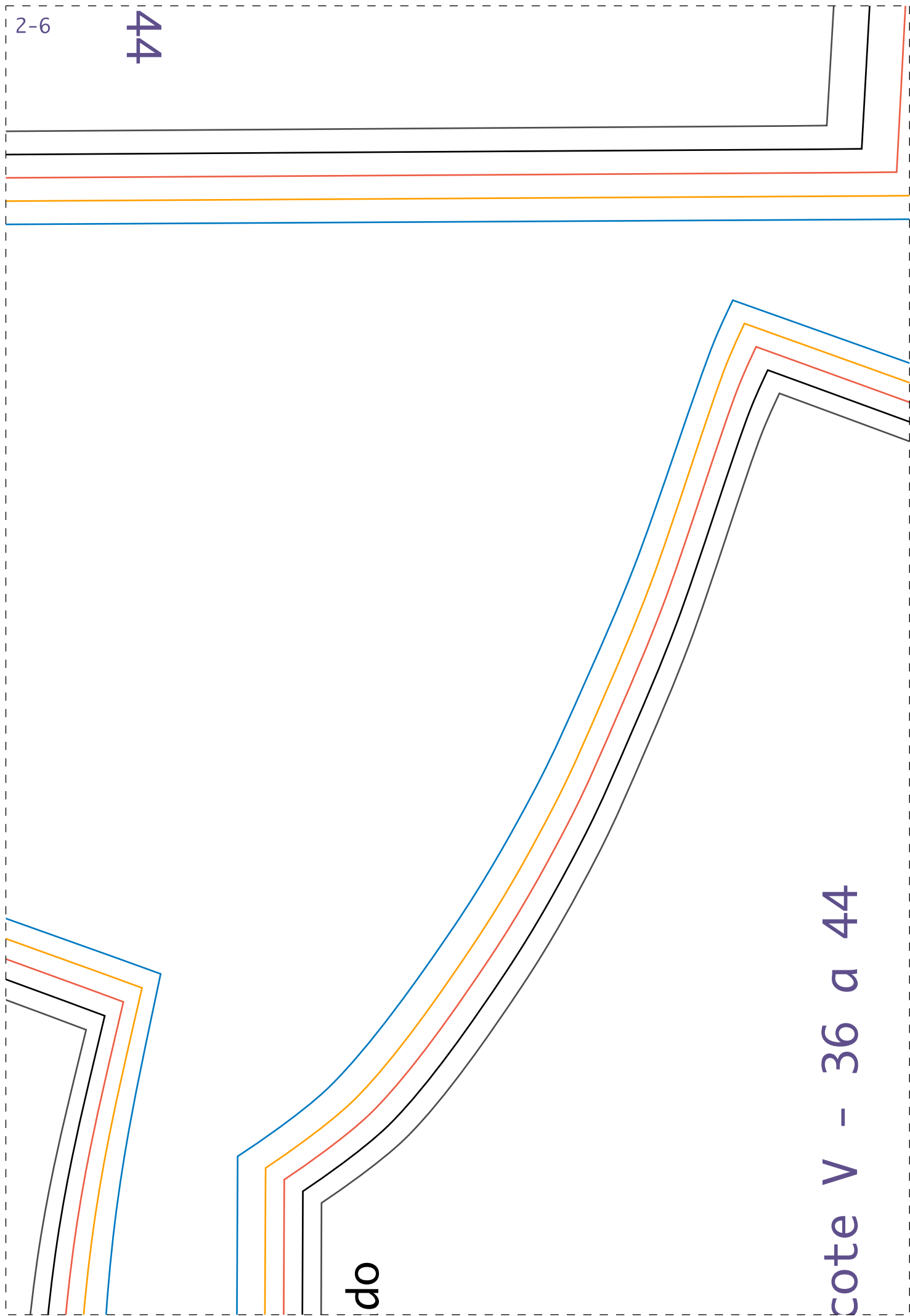


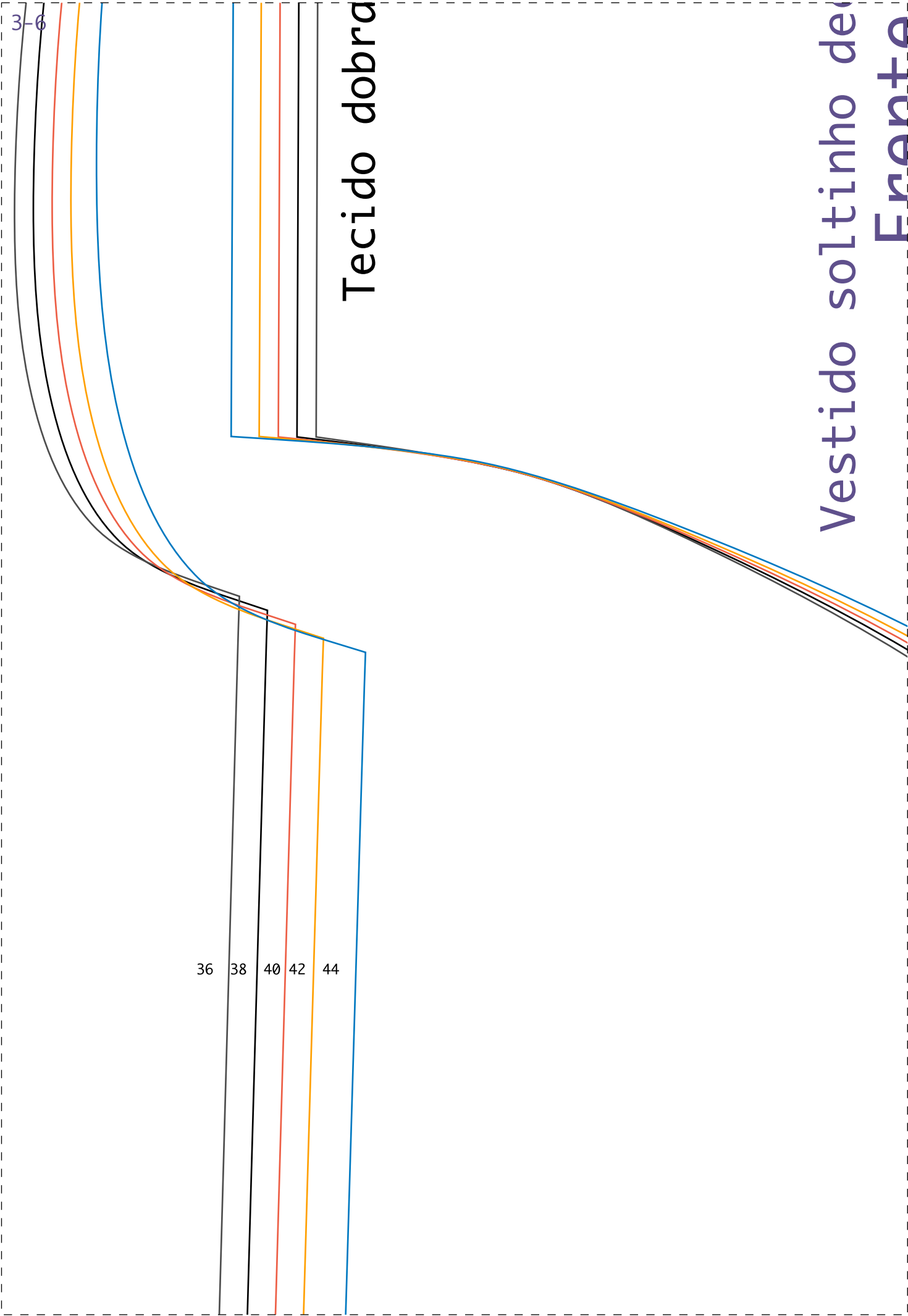
2-6

44

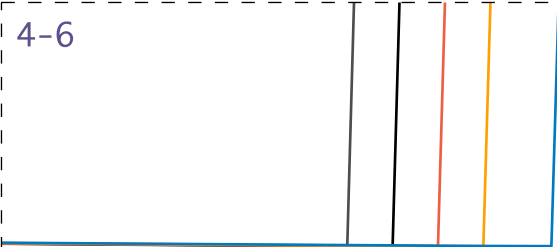
do

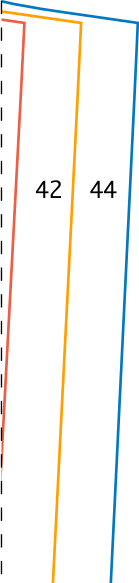
cote V - 36 a 44





4-6





2-7

cido

