

Try your hand at
bust darts to make the

ISLA DRESS



sew a SHIFT DRESS

Get started

- Chambray fabric, 1.4m x 1.6m
- Invisible zip, 56cm
- Lightweight interfacing

Sizes

Size	Chest (cm)	Length* (cm)
S (10-12)	108	99
M (12-14)	113	100
L (14-16)	118	101

*from side neck, with 2.5cm hem

Cutting guide

Front: cut one from chambray

Back: cut one pair from chambray

Sleeve: cut one pair from chambray

Front neck facing: cut one each from chambray and interfacing

Back neck facing: cut one pair each from chambray and interfacing

1.5cm seam allowance used throughout.

1 Download and print the pattern at sewmag.co.uk/templates. Cut out all the pieces, referring to the cutting guide. Transfer the dart markings onto the front pattern piece, stitch the bust darts, then press them towards the garment base.

2 Apply interfacing to the wrong side of the front and back facing pieces. With right sides together, sew the front and back facing pieces together at the shoulder seams. Repeat to join the main front and back dress pieces. Fold and press the seam allowance on the centre-back seam.

3 Open the invisible zip and pin each side along the centre-back seams, matching the top

to the neck edge and the teeth along the creased seam. Change to an invisible zipper foot and stitch in place. Stitch the remaining centre-back seam together, starting 6cm above the end of the zipper. Sew down the side seams.

4 Fold one sleeve piece in half, right sides together, then sew the sleeve underarm seam.

Sew two rows of ease stitching around the sleeve head then lightly draw them up to match the underarm seam to the side seam, and the sleeve head notch to the shoulder seam. Pin in place, then stitch around.

5 Pin the front neck facing along the neckline of the front piece, right sides together and matching the shoulder seams. Sew the seam, then clip V-shaped notches every few centimetres around. Turn a 2.5cm hem at the sleeves and garment base, then machine stitch.

6 Fold the ends of the back facing underneath themselves, then press and understitch them to the zip tape. Secure the seam allowance of the neck facing to that of the shoulder seams with a few hand stitches.

“If you choose a material with a different weight to chambray, remember to match the weight of your interfacing to it.”

Julia Claridge,
Sew Designer



Core skill:
**EASE
STITCHING**

This is two parallel straight lines of long stitches that are pulled to create a gather around shoulder pieces to 'ease' them into smaller armholes. Pull carefully to create an even gather around, making a lighter gather on the line closest to the seam. Use lots of pins perpendicular to the raw edge to retain the shape of the gathers as you sew.



sew
SHOPPER



CHAMBRAY HOORAY

We used 100% antique linen chambray in denim blue by Lady McElroy, £21 for 2m, craftstoreuk.com

thank you for shopping!

sew

Issue 100 August issue 2017

ISLA DRESS TEMPLATE



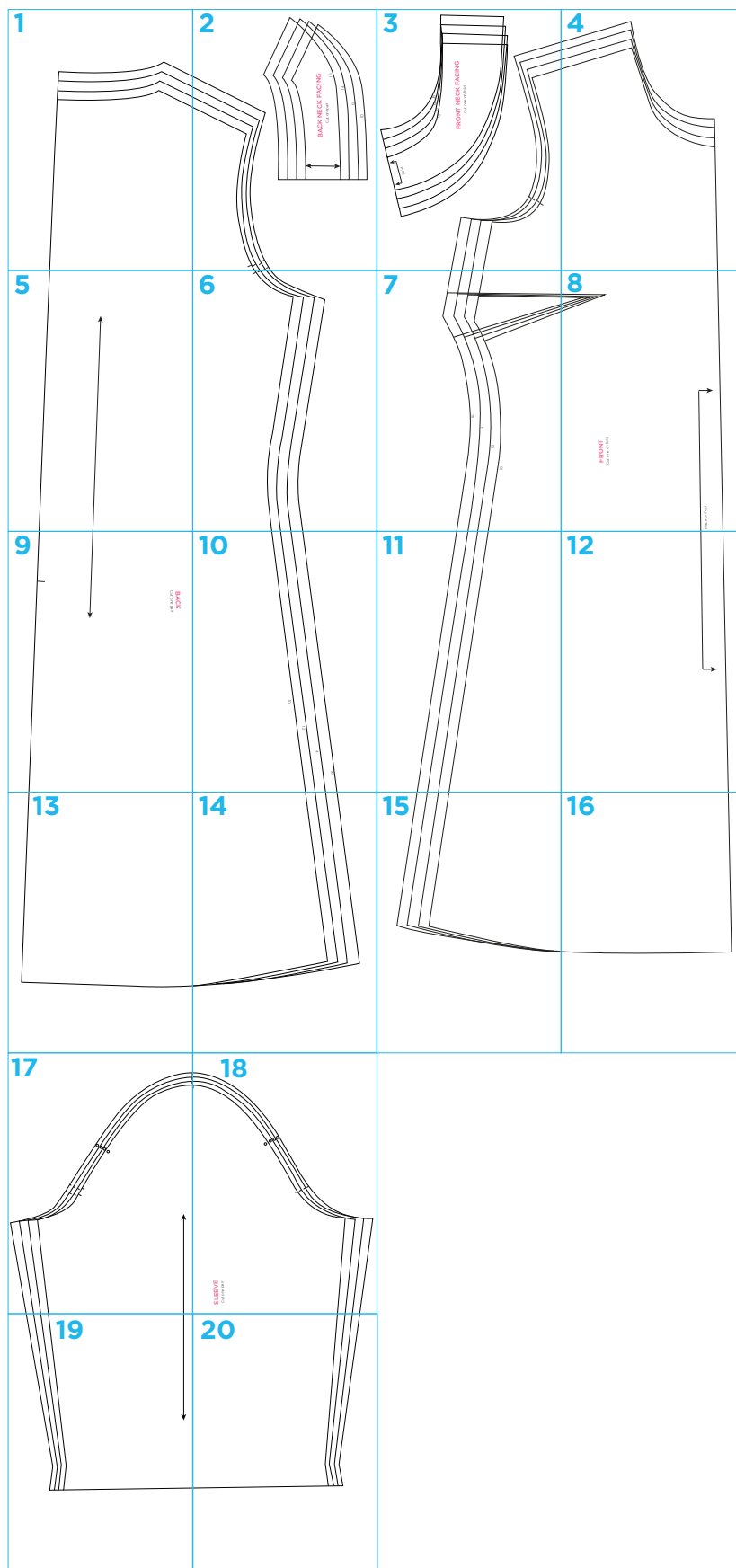
Use these guides to get started today

FIND THE TEMPLATE YOU REQUIRE ON THE CONTENTS LIST BELOW AND JUST PRINT OUT THE PAGE OR PAGES YOU NEED FROM YOUR PRINT MENU

In your print menu, under Size options, be sure to select to print 'Actual Size', instead of 'Fit to Page'

Title: Isla dress
Designer: Julia Claridge
Magazine page: 26
Total 22 pages to print

Title: Isla dress
Designer: Julia Claridge
Magazine page: 26
Total 22 pages to print



sew

www.sewmag.co.uk

1

Measurements in inches

UK SIZE 8 10 12 14 16 18 20 22

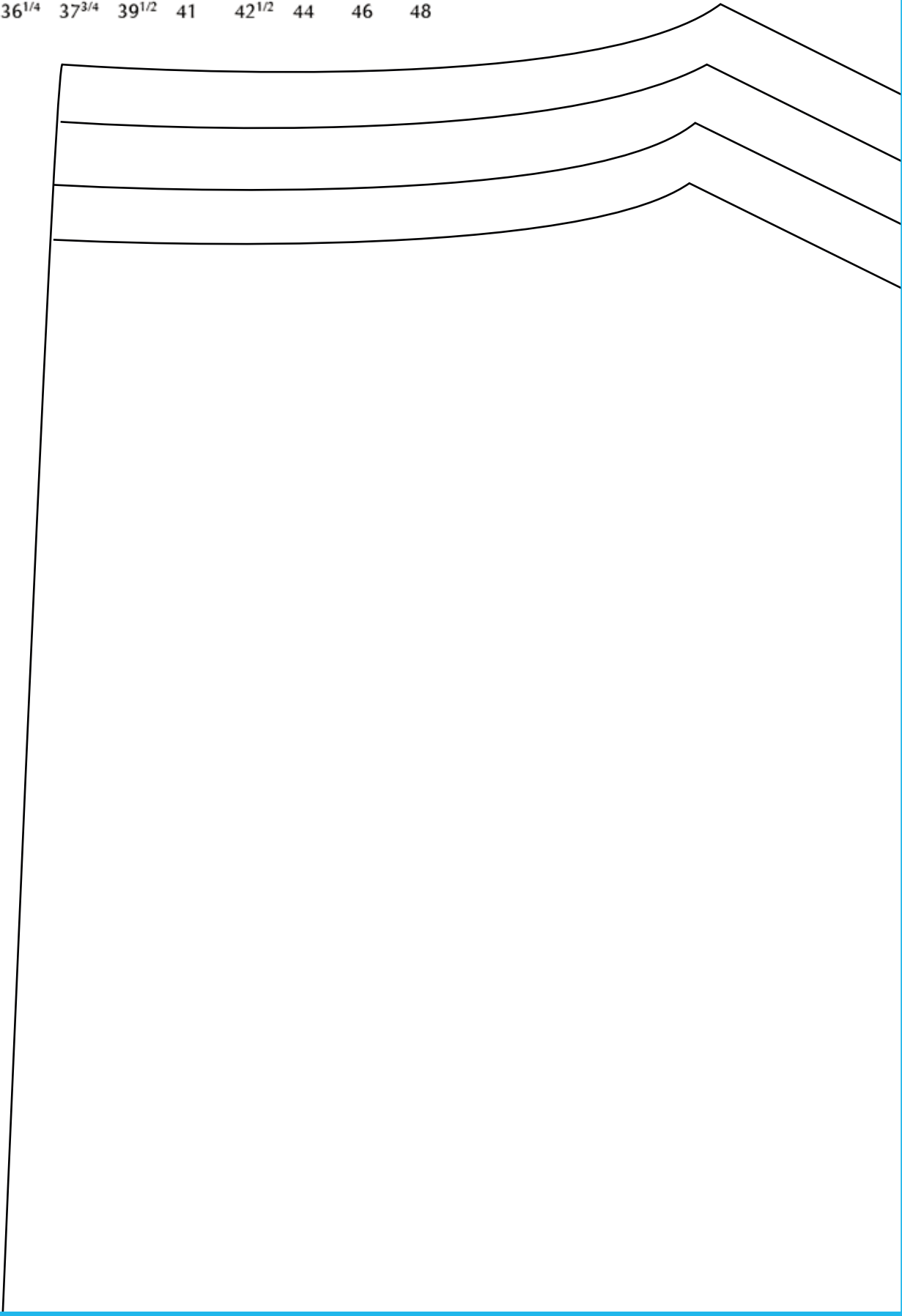
US SIZE 4 6 8 10 12 14 16 18

EUROPEAN 36 38 40 42 44 46 48 50

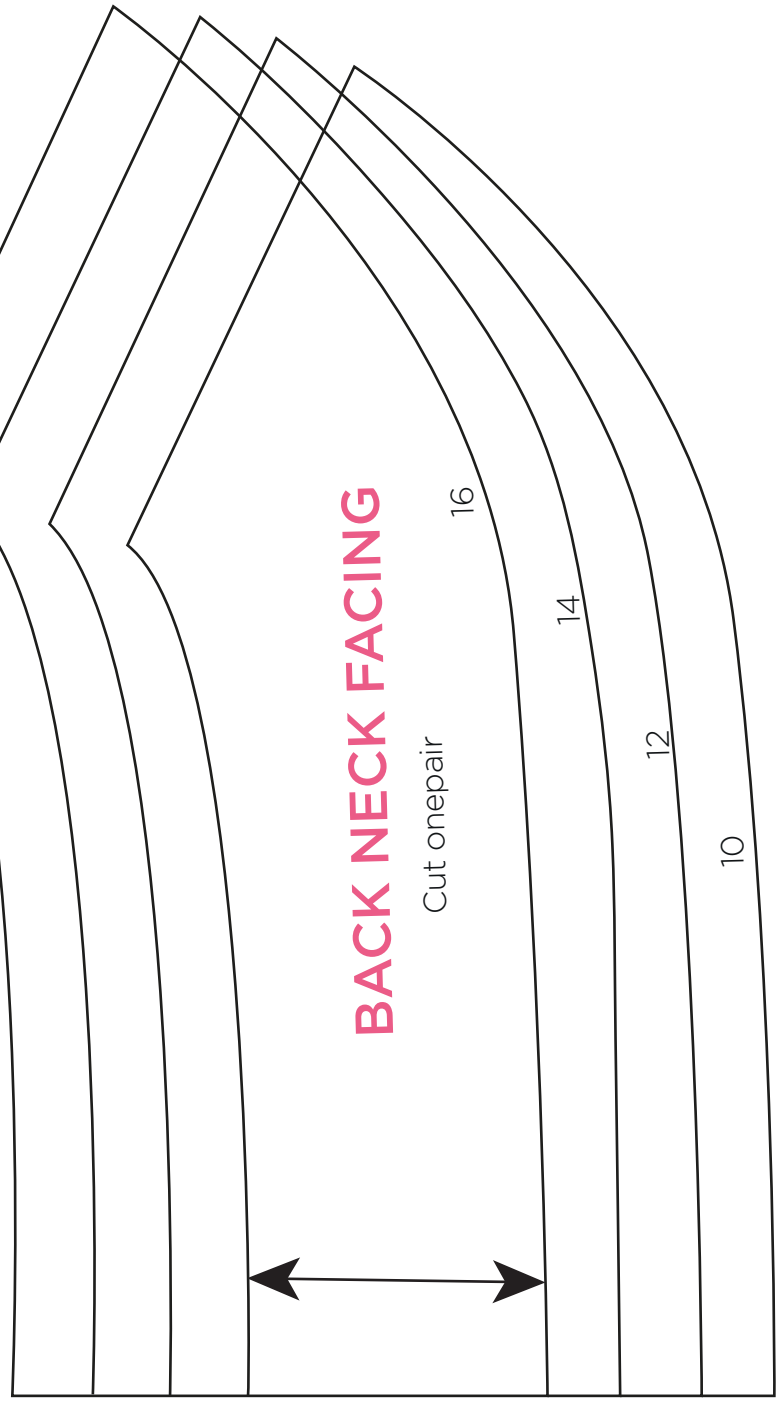
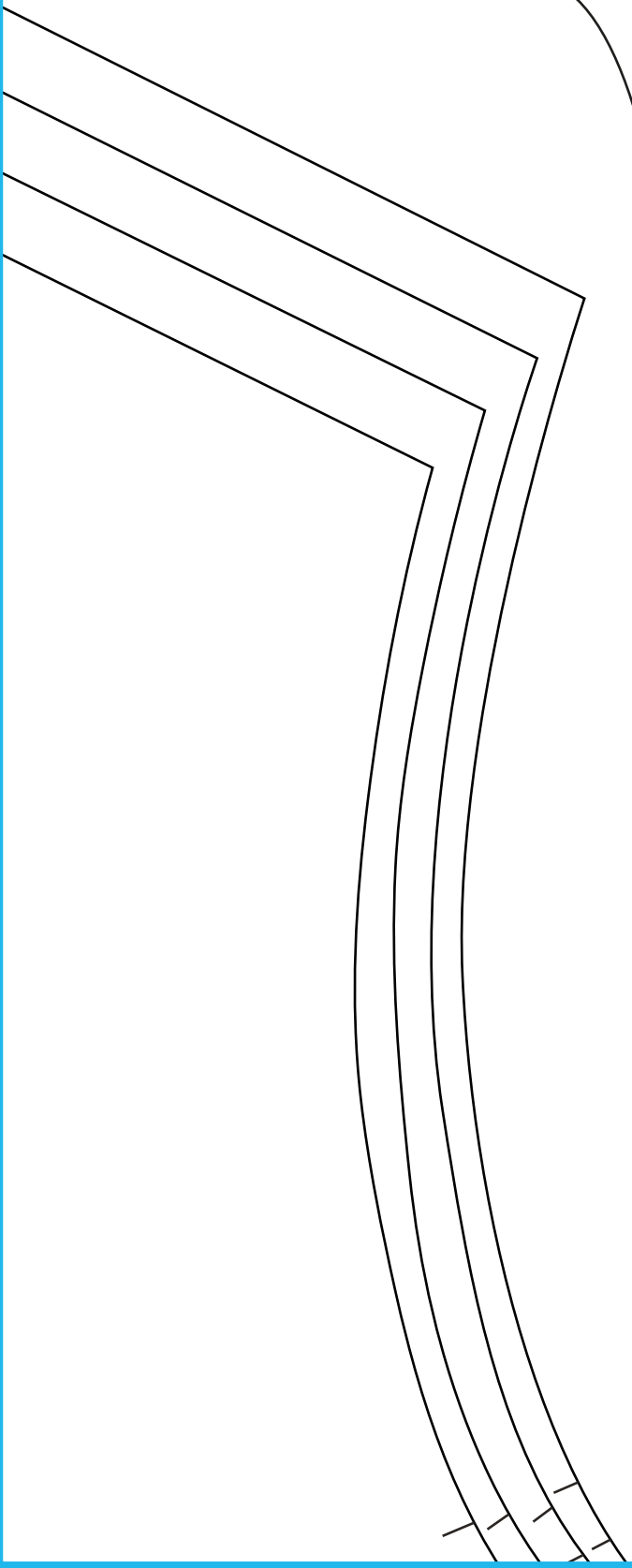
BUST 33 34^{1/2} 36 37^{3/4} 39^{1/2} 41 43^{1/4} 45^{3/4}

WAIST 26^{3/4} 28^{1/4} 30 31^{1/2} 33 34^{1/2} 37 39^{1/2}

HIPS 36^{1/4} 37^{3/4} 39^{1/2} 41 42^{1/2} 44 46 48



2



BACK NECK FACING

Cut one pair

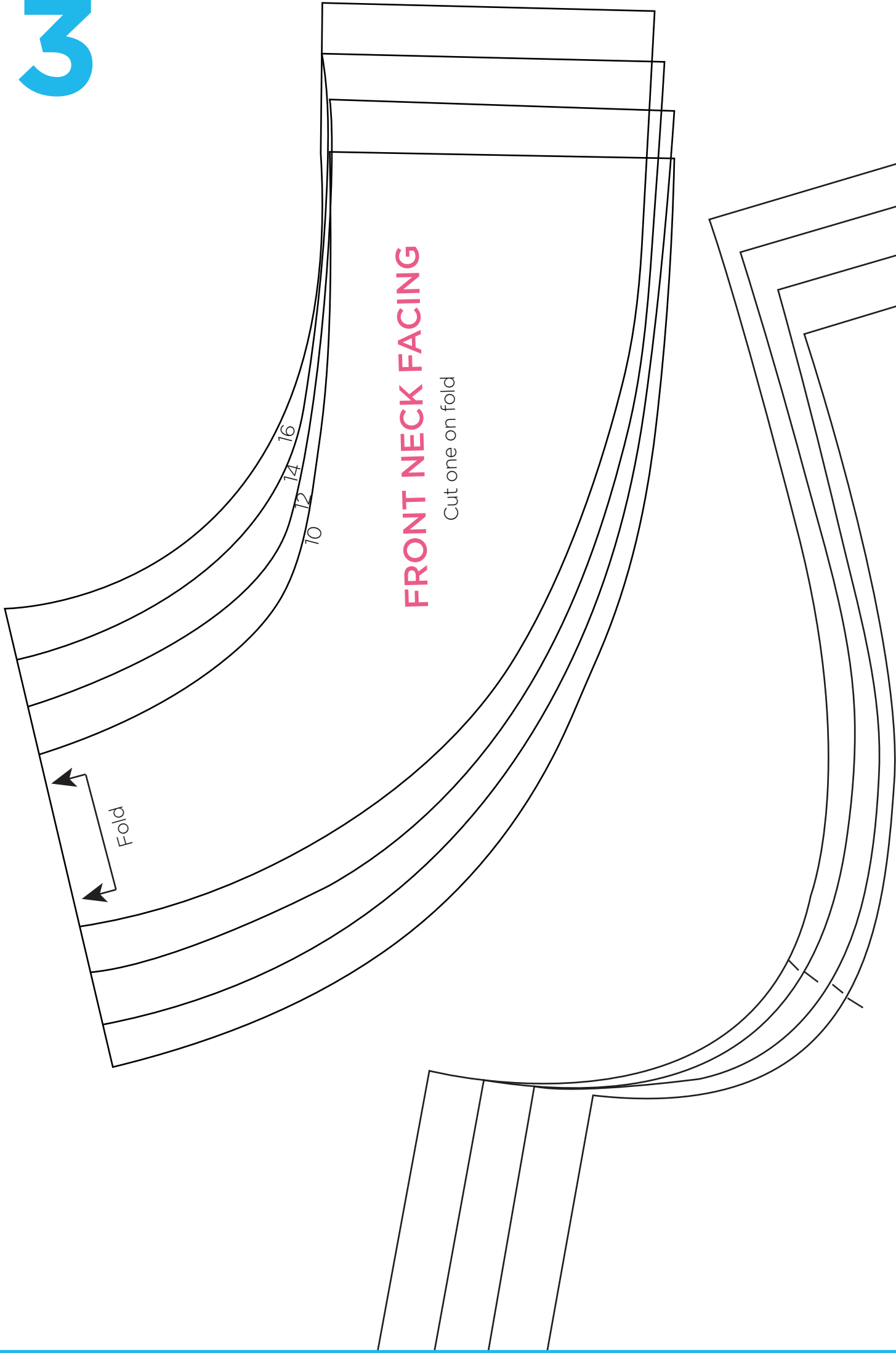
16

14

12

10

3



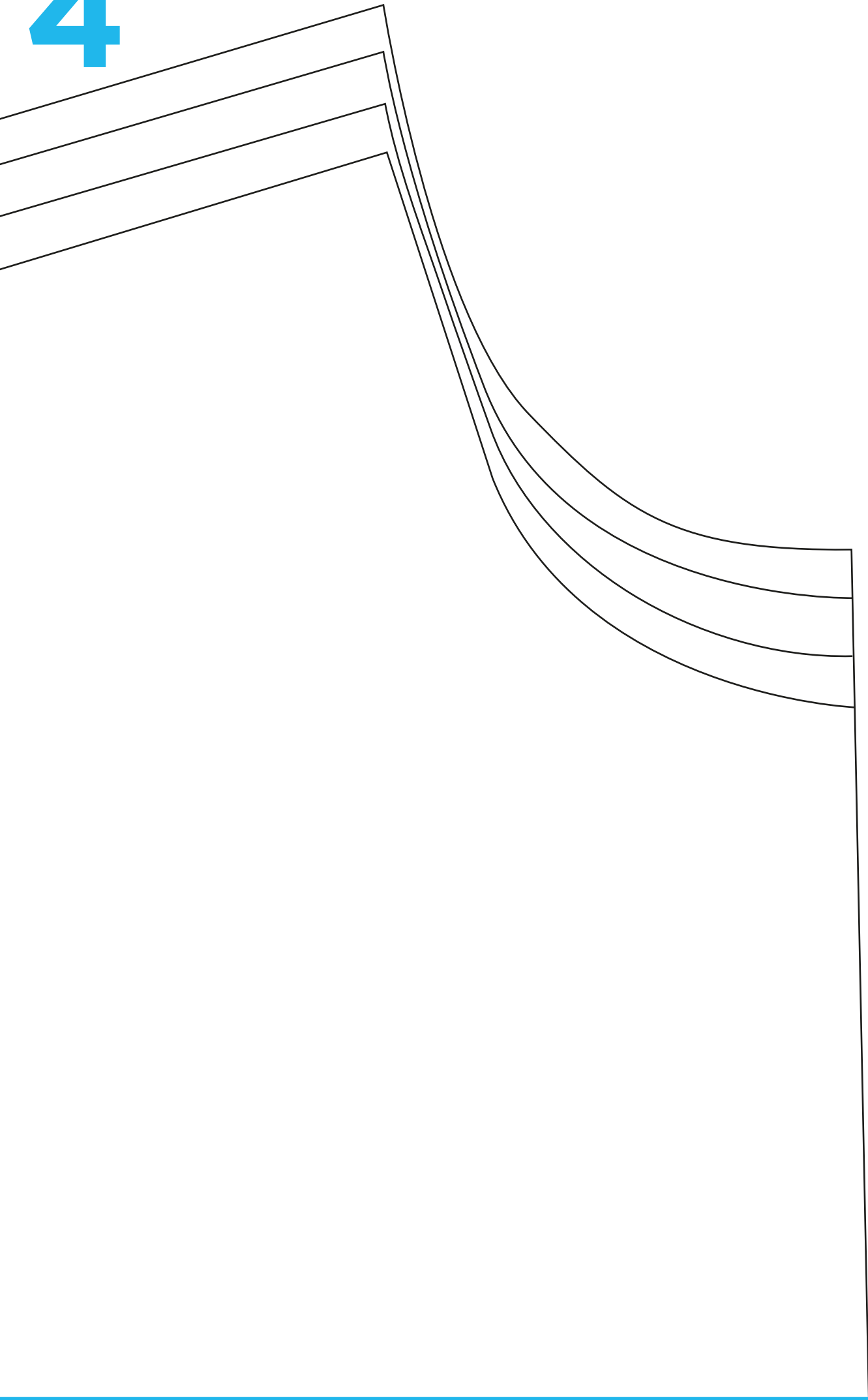
FRONT NECK FACING

Cut one on fold

Fold

10
12
14
16

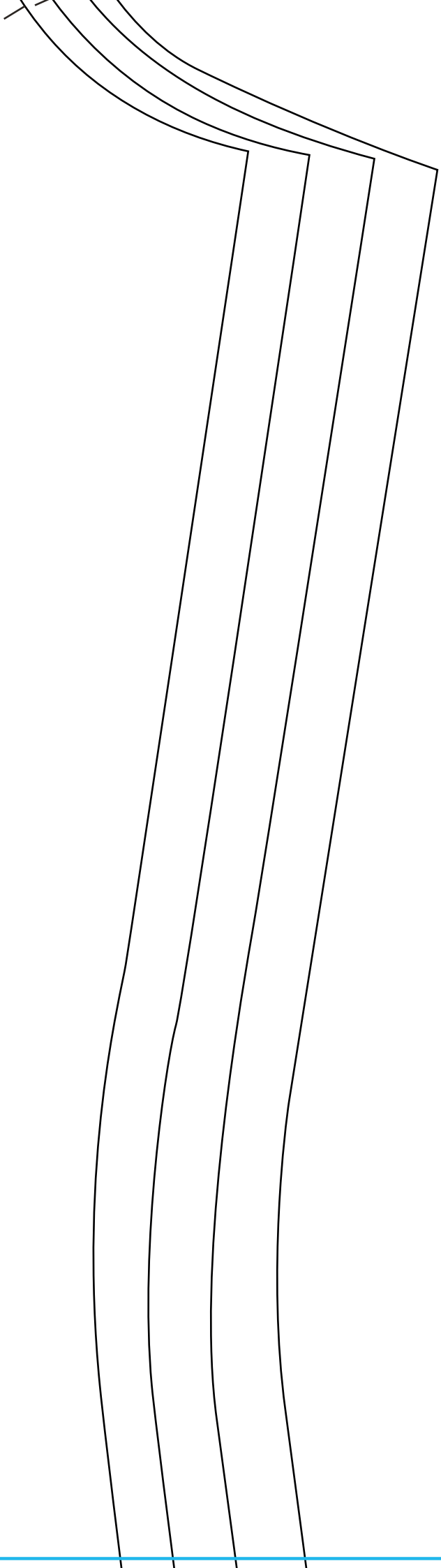
4

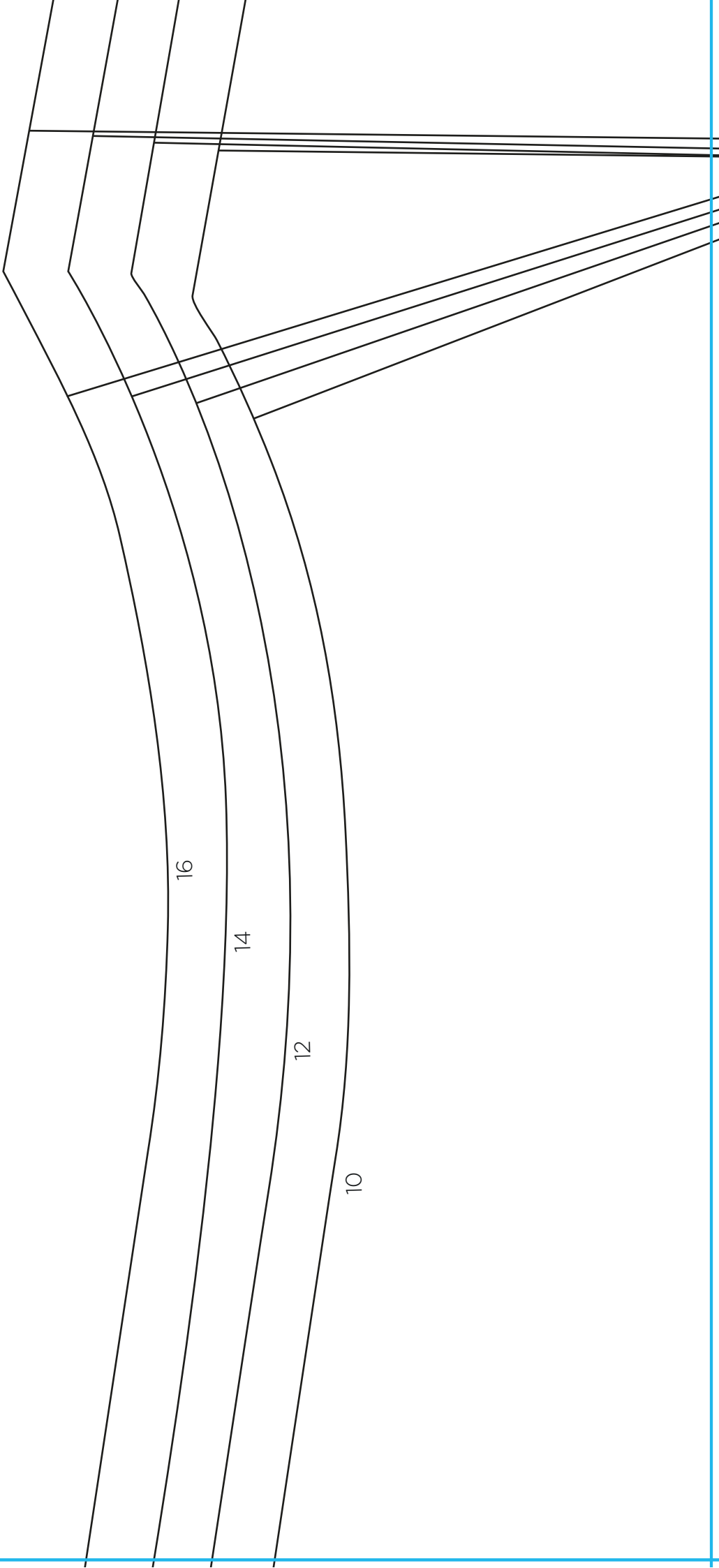


5

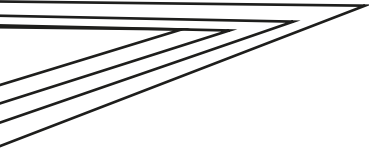


6





8



FRONT

Cut one on fold



Place on fold

BACK

Cut one pair



9

10

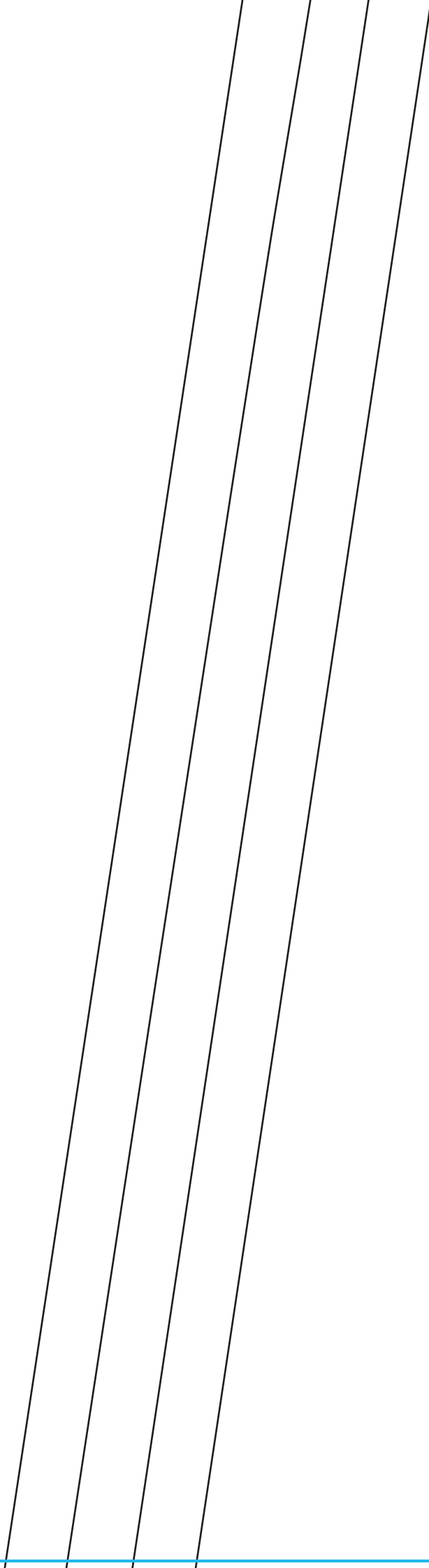
10

12

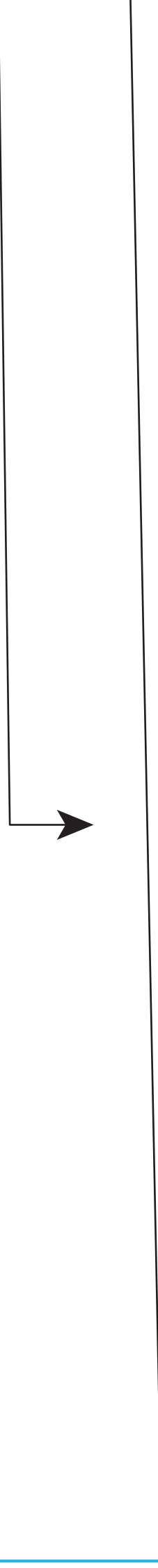
14

16

11

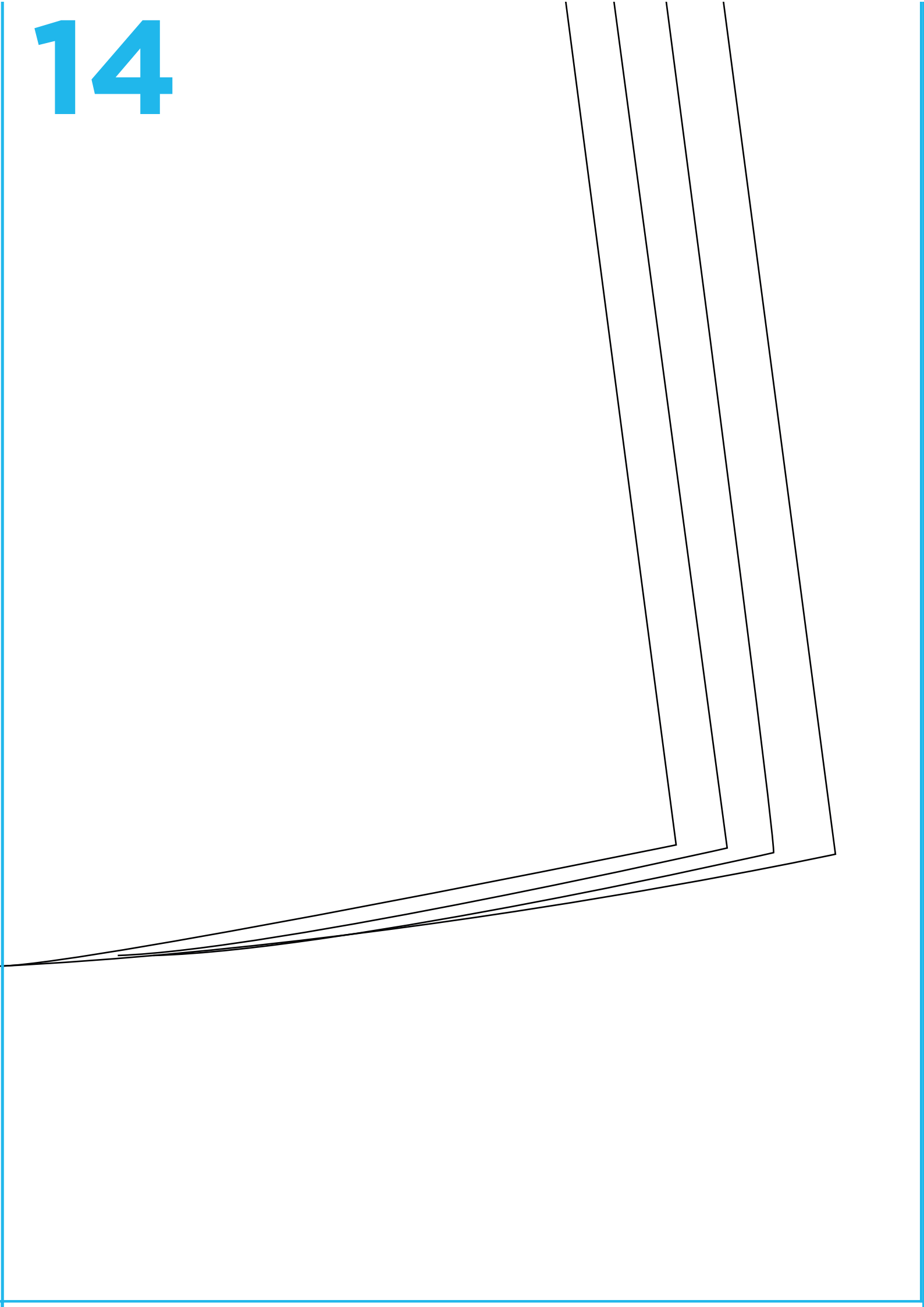


12

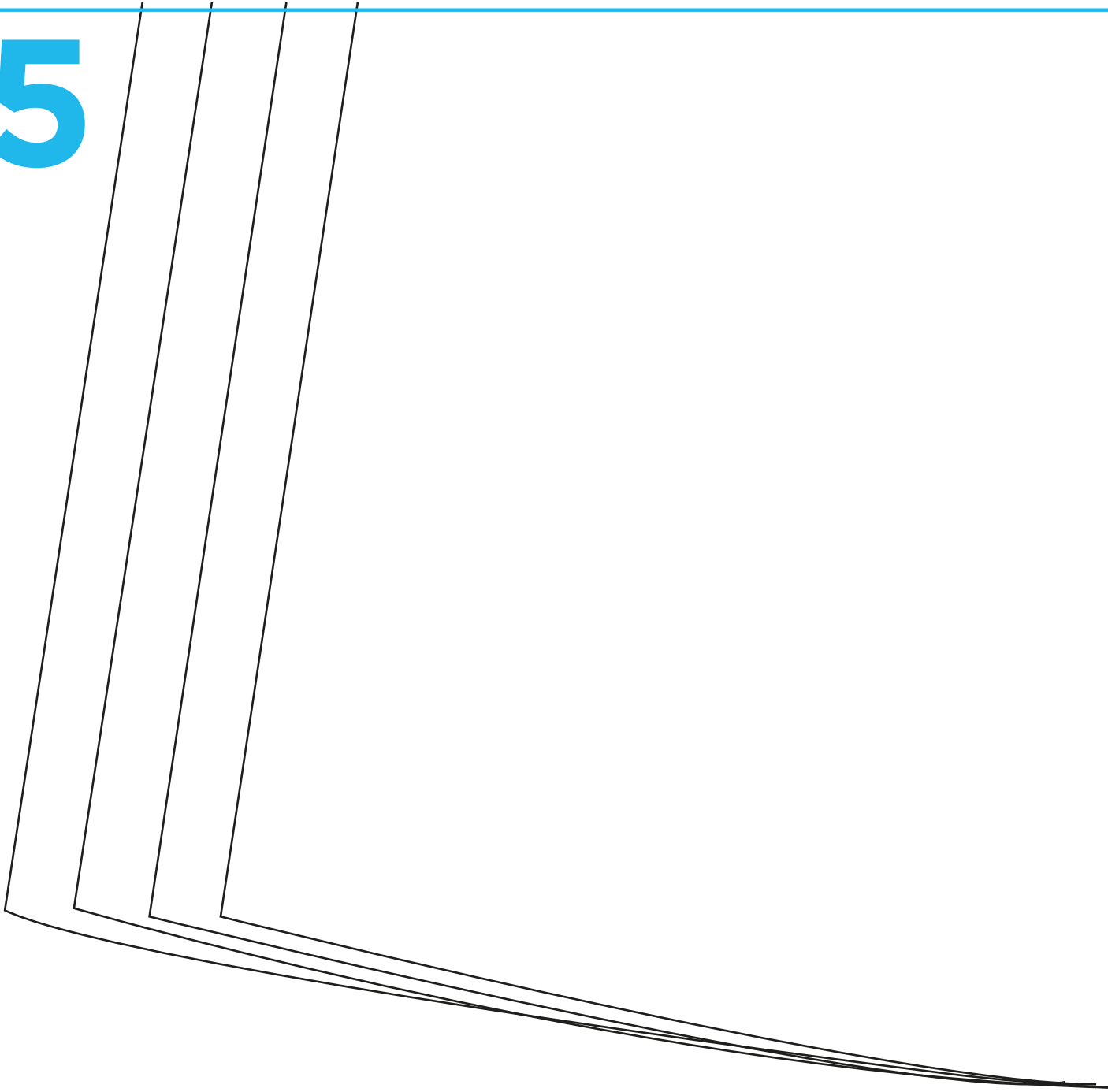


13

14

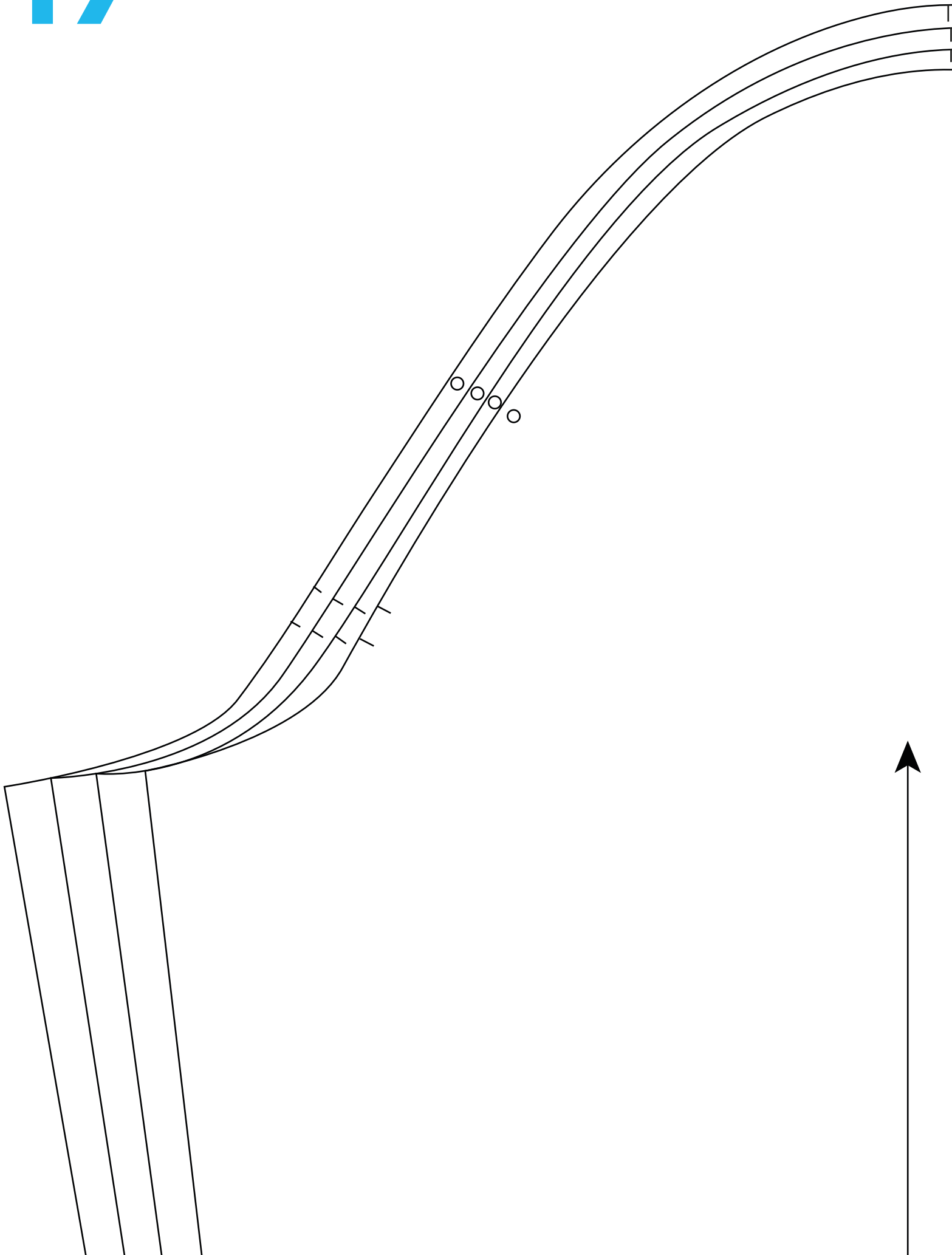


15

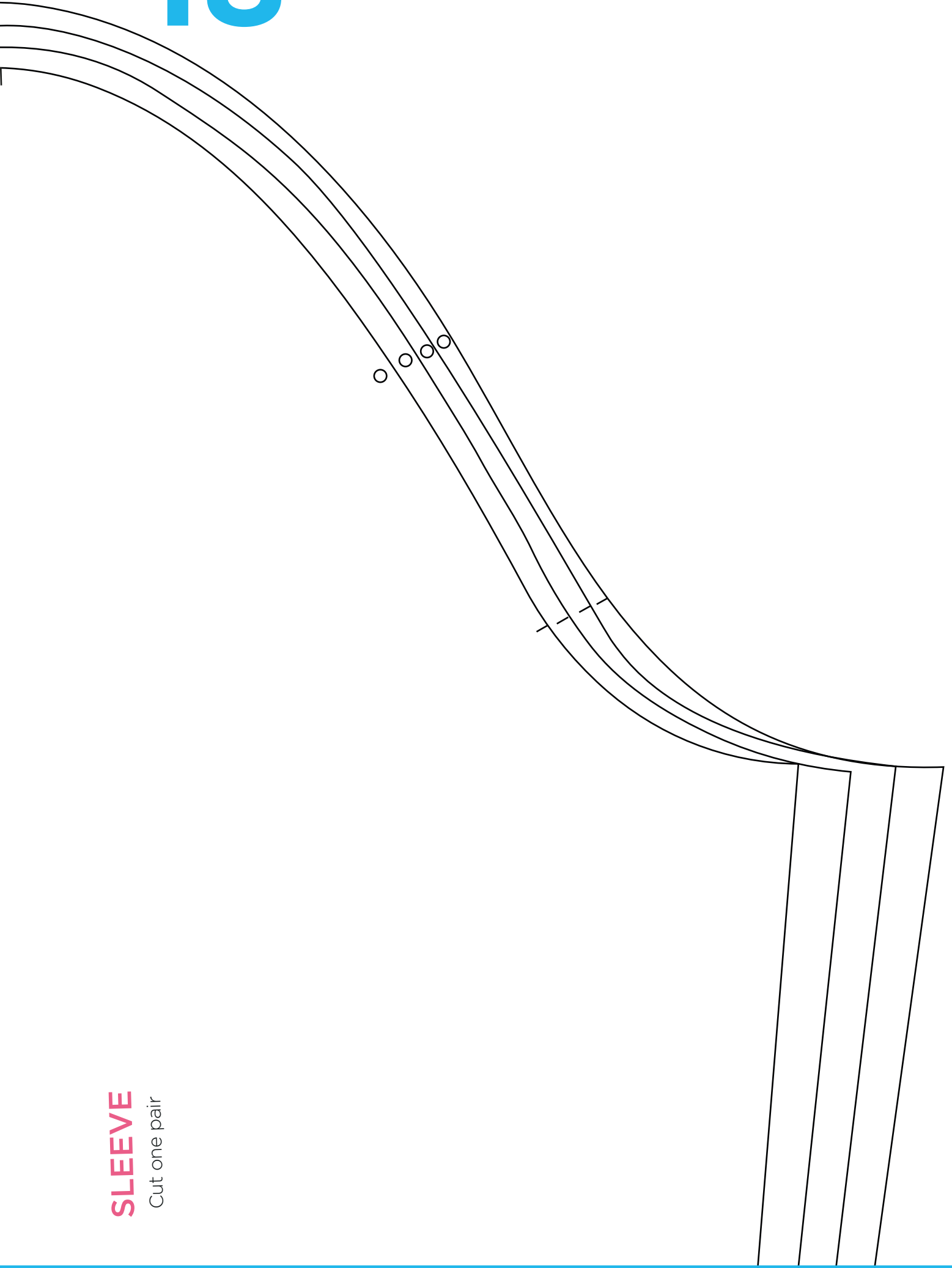


16

17



18



SLEEVE

Cut one pair

19



20

