

We love
STYLE

Cosy cocoon **DRESS**

Use a lightweight sweatshirt jersey for a lovely throw-on dress, which is great for dressing up or down

Project **JULIA CLARIDGE**
www.bobbinsnbuttons.co.uk



ABOUT **BOBBINS & BUTTONS**

Bobbins & Buttons is a hub of sewing based in the East Midlands, offering own-brand patterns, fabric and workshops. Julia designs a range of sewing patterns for all the family. Styles are versatile, adaptable and easy to make. A collection of fabric that suits the sewing patterns is available. Julia offers sewing classes that are flexible to your skill level and geared towards what you would like to learn.

For more information
visit Julia's website
www.bobbinsnbuttons.co.uk

SEWING WITH JERSEY FABRIC

Jersey fabrics don't fray, so it is not necessary to neaten the raw edge of seams unless you want to

These instructions include neaten edges but you can omit this if preferred. It is best to use a shallow zigzag or stretch stitch to sew the dress together so that the seams have a bit of flexibility if stretched

Why NOT TRY?



Brick red and white check lightweight sweatshirt fabric, £15 per metre



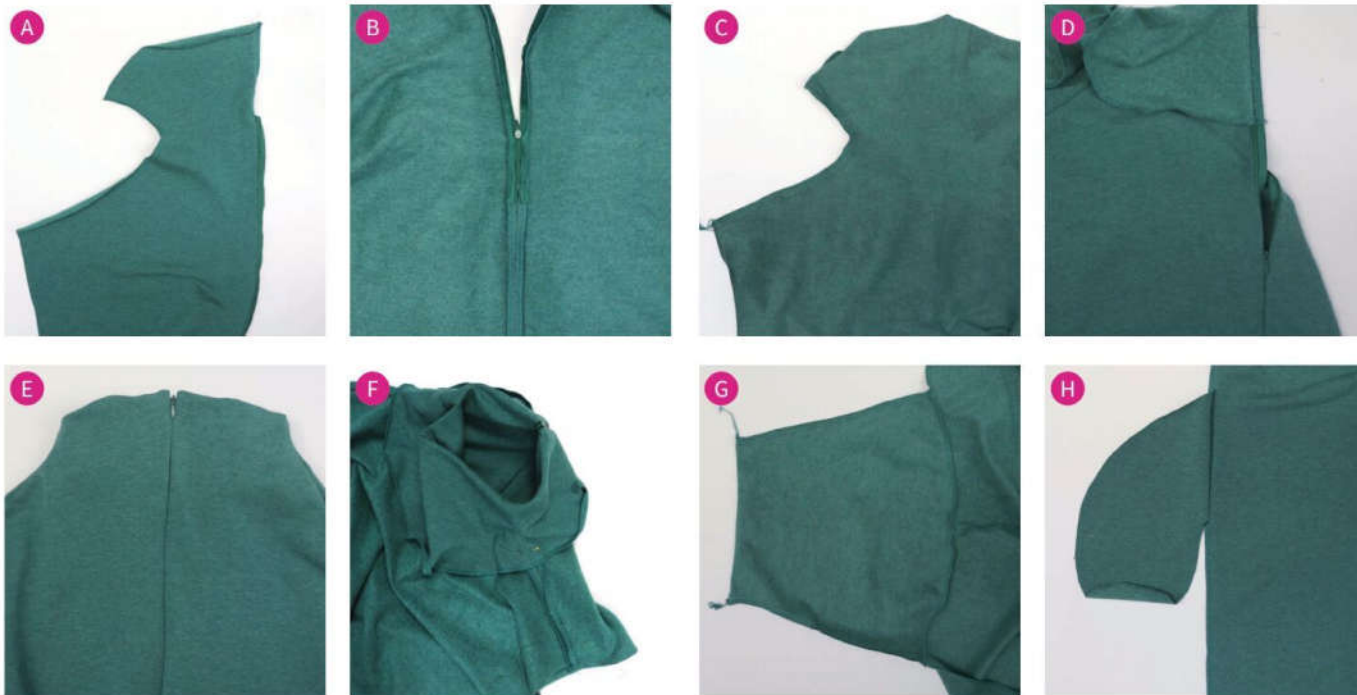
Grey marl French terry, £14 per metre



Burgundy stretch terry marl, £11.50 per metre

All fabric available from www.bobbinsnbuttons.co.uk





MATERIALS & TOOLS:

- 1.6x1.55m lightweight sweatshirt jersey
- 46cm invisible zip
- template downloaded from www.craftworld.com/cms/love-sewing

NOTES:

Use a 1.5cm seam allowance throughout unless otherwise stated

CUTTING

From main fabric, cut:

- front on fold
- pair of backs
- pair of sleeves
- 2 pairs of pockets

HOW TO MAKE:

- 1 Neaten the centre back seams. With RST pin one side of the zip tape to the centre back from the neck notch down to the lower notch. Using a zipper foot stitch in place. Repeat with the other side. (See Pic A.)
- 2 Pin the centre back seam

together beneath the zip, starting from approximately 3cm above the end of the zip stitch the centre back seam together with the zipper foot. (See Pic B.)

- 3 Neaten the raw edges of the front and back shoulder seams. With RST pin the front and back together at the shoulder seams. Stitch and press the seam open. (See Pic C.)

- 4 Bring the neckline facing that extends beyond the top of the zip RST folding at the top of zip. Match the centre back edge of the facing to the zip tape. Stitch using a zipper foot on both sides. Trim corners away from upper edge and turn through to the right side. (See pics D and E.)

- 5 Hand-stitch the facing edge at the shoulder seams to the shoulder seams of the dress. With RST and sleeve head notch matched to shoulder seam pin the sleeve along the

armhole. Stitch, neaten raw edges. (See Pic F.)

- 6 With RST and notches matched, pin a pocket bag to each side front and back. Stitch using a 1cm seam allowance. Neaten the whole side seam raw edges catching the pocket as you go. (See Pic G.)

- 7 With RST pin and stitch the underarm seam from the edge of the sleeve to 1.5cm beyond the upper edge of the pocket. Leaving a gap for the pocket opening, start stitching 1.5cm above the lower edge of the pocket bag. (See Pic H.)

- 8 With RST pin the front and back pocket bags together at each side. Stitch and neaten raw edges. (See Pic I.)

- 9 Neaten raw edge of the hem and sleeve hem. Turn a single turned 2cm hem around both. Stitch hems with a medium zigzag or stretch stitch. (See Pic J.)



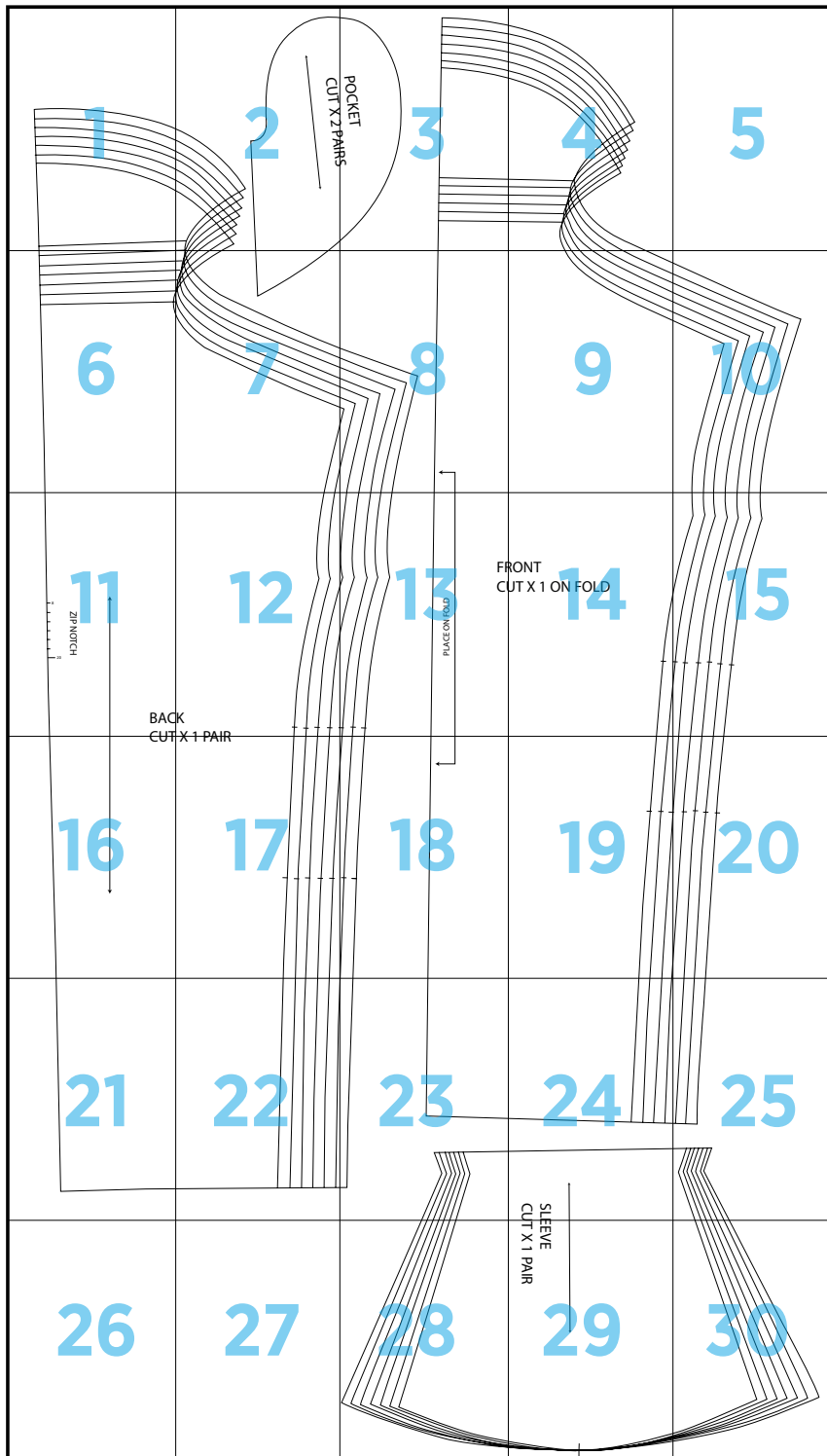
Shopping list

Jade green marl
lightweight sweatshirt
fabric, £13 per metre www.bobbinsnbuttons.co.uk

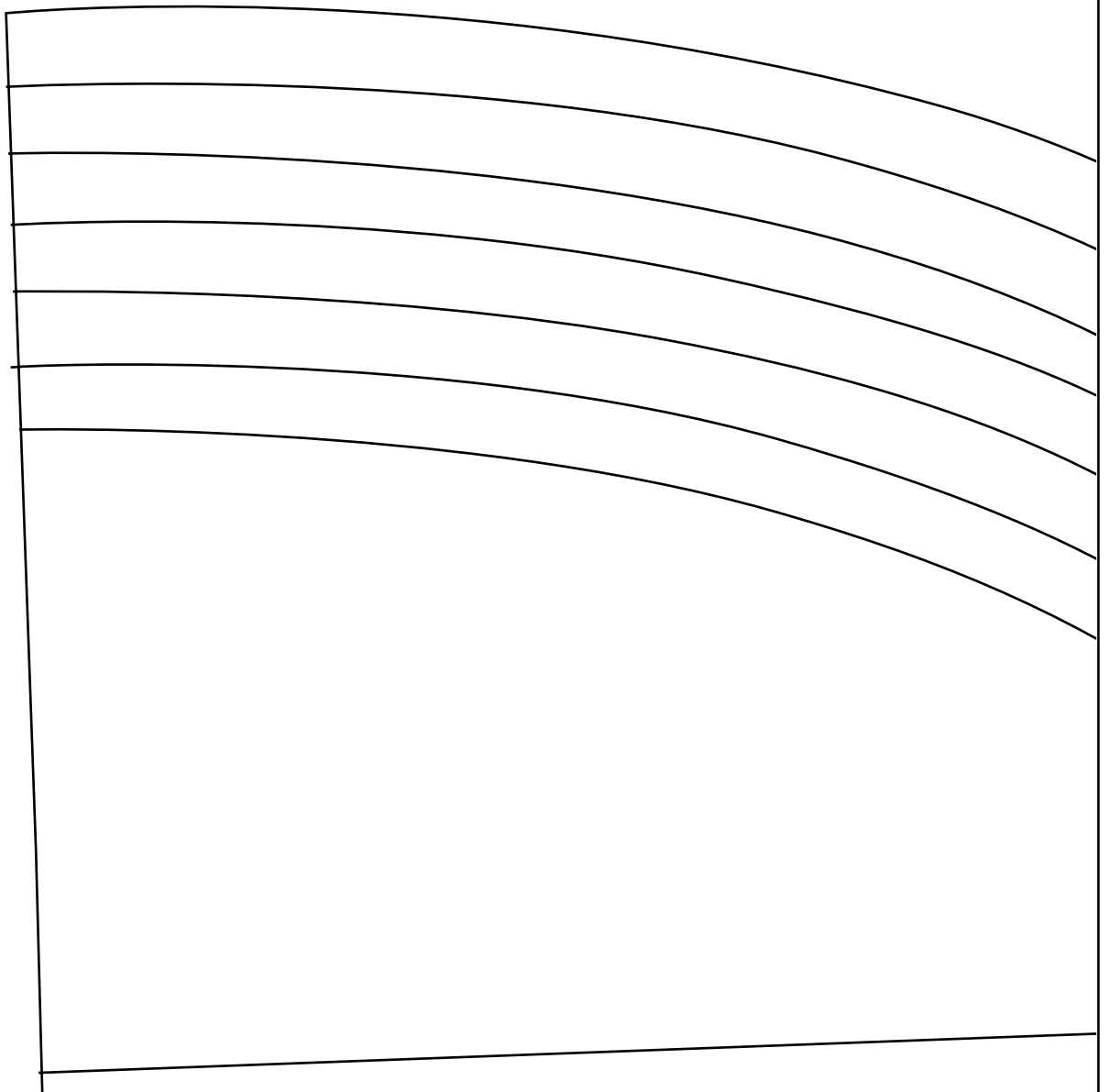
GARMENT MEASUREMENTS

	8	10	12	14	16	18	20
Bust	111cm	116cm	121cm	126cm	131cm	136cm	141cm
Length from side neck to hem	90cm	91cm	92cm	93cm	94cm	95cm	96cm
Hips	91cm	96cm	101cm	106cm	111cm	116cm	121cm

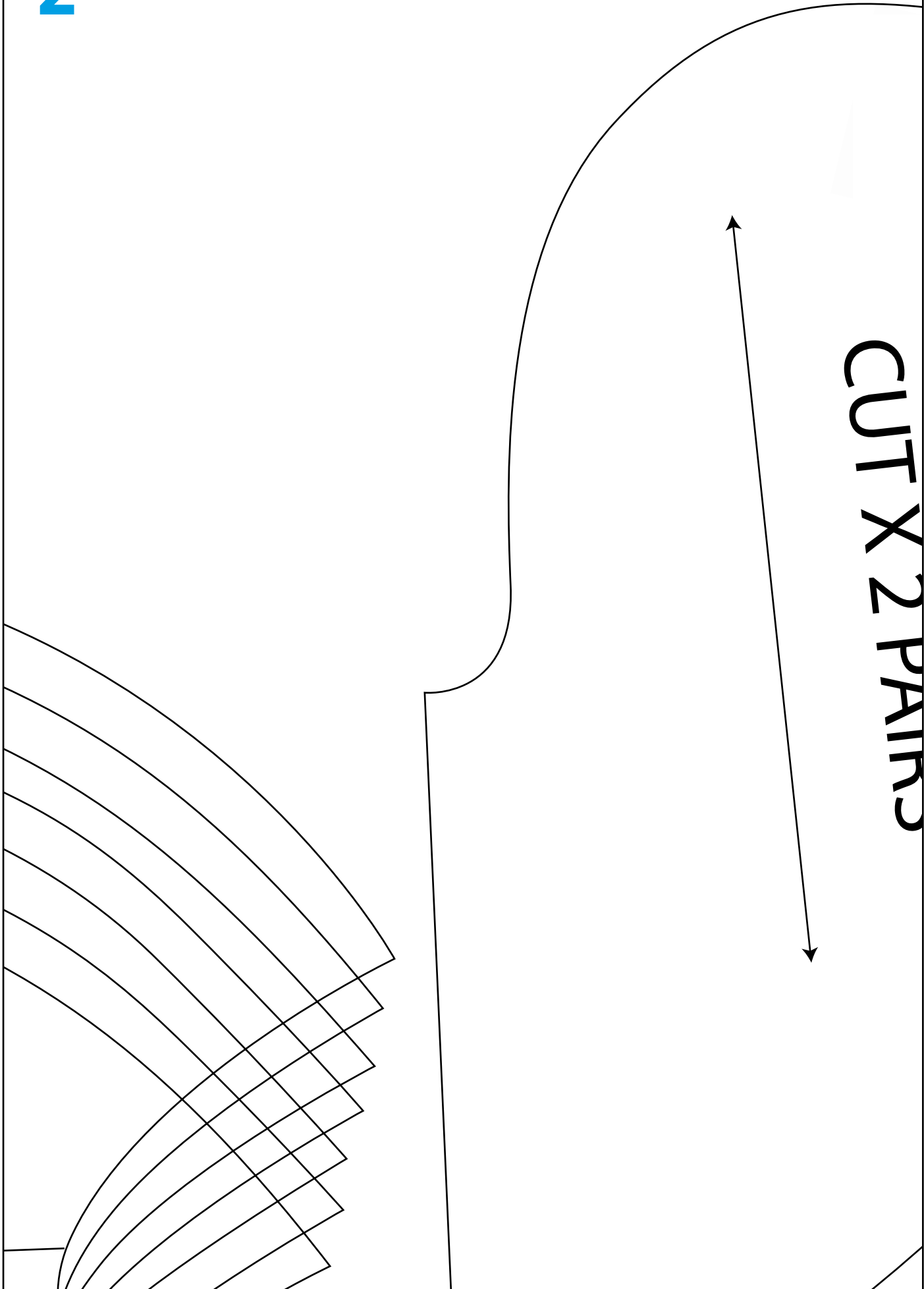
Cocoon Dress



1



2

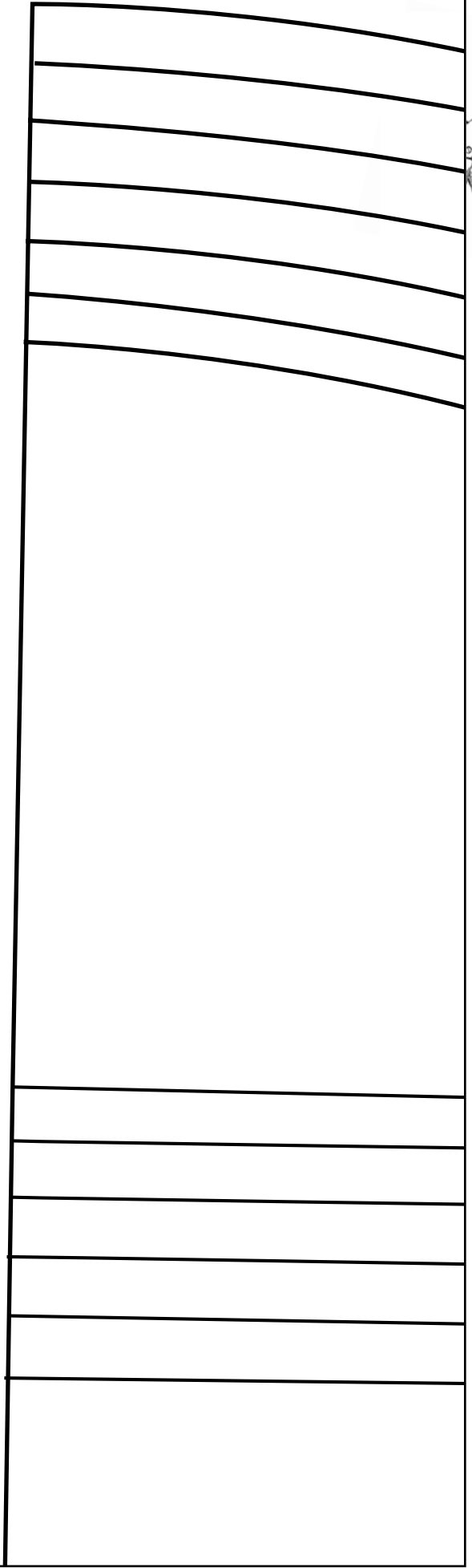
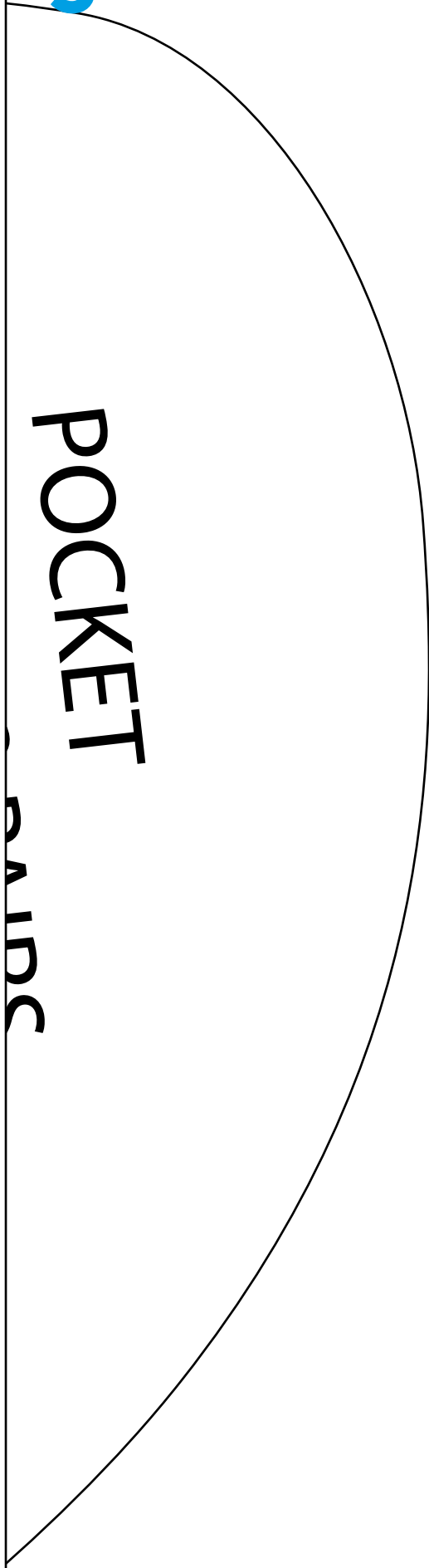


CUT X 2 PAIRS

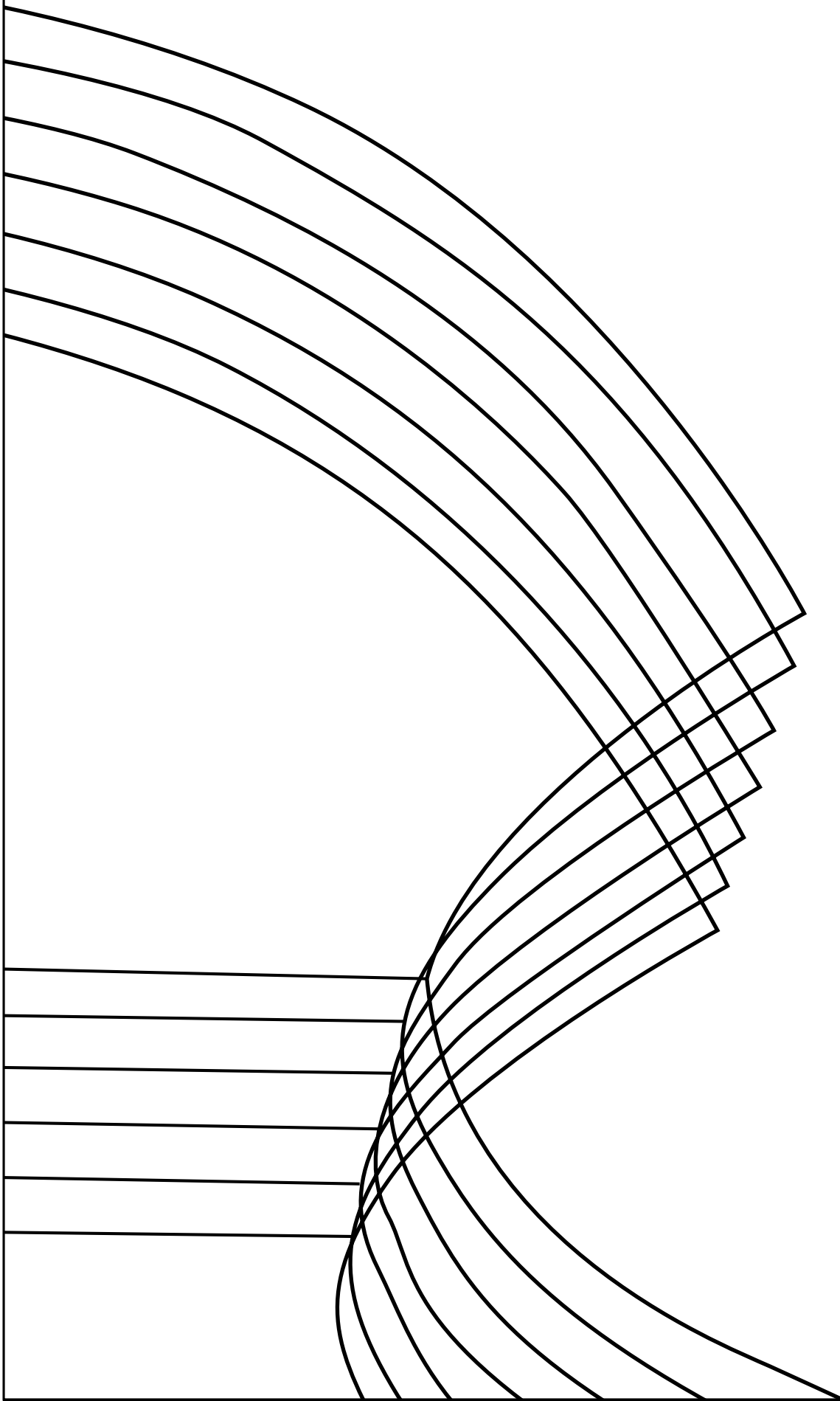
3

POCKET

SAIDC



4



5



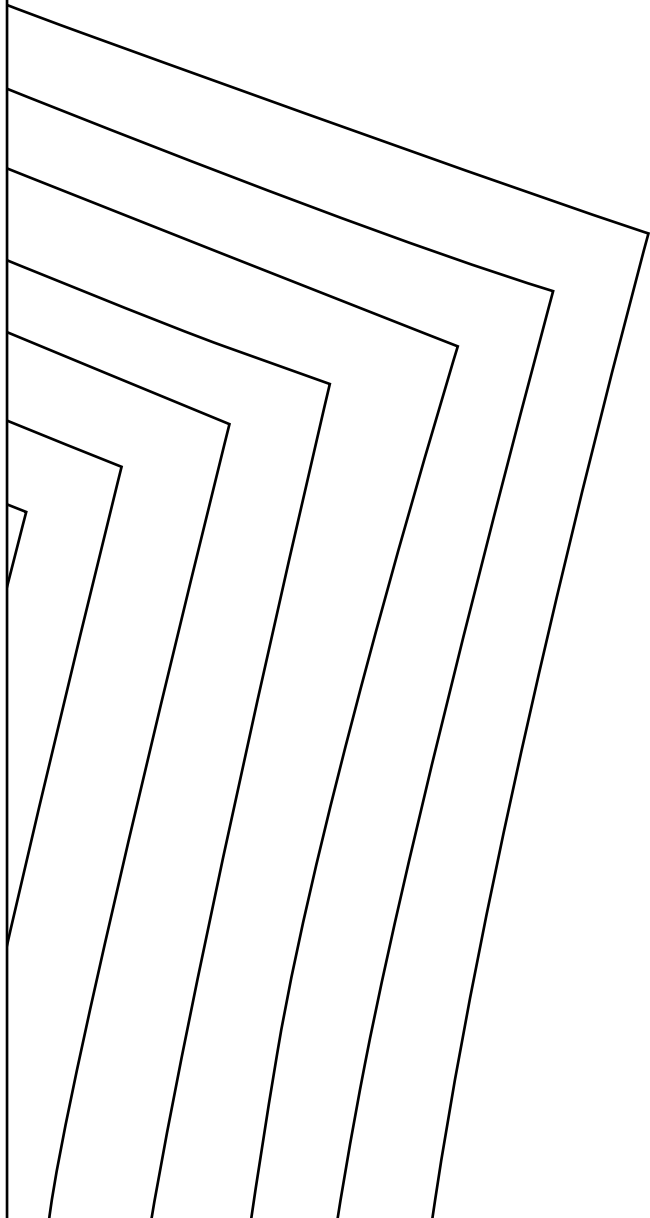
6



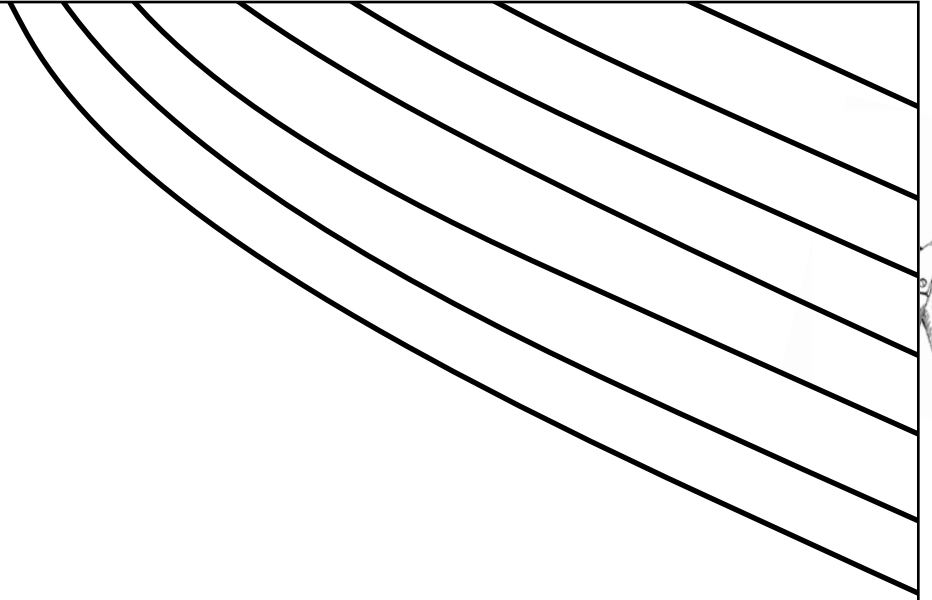
7



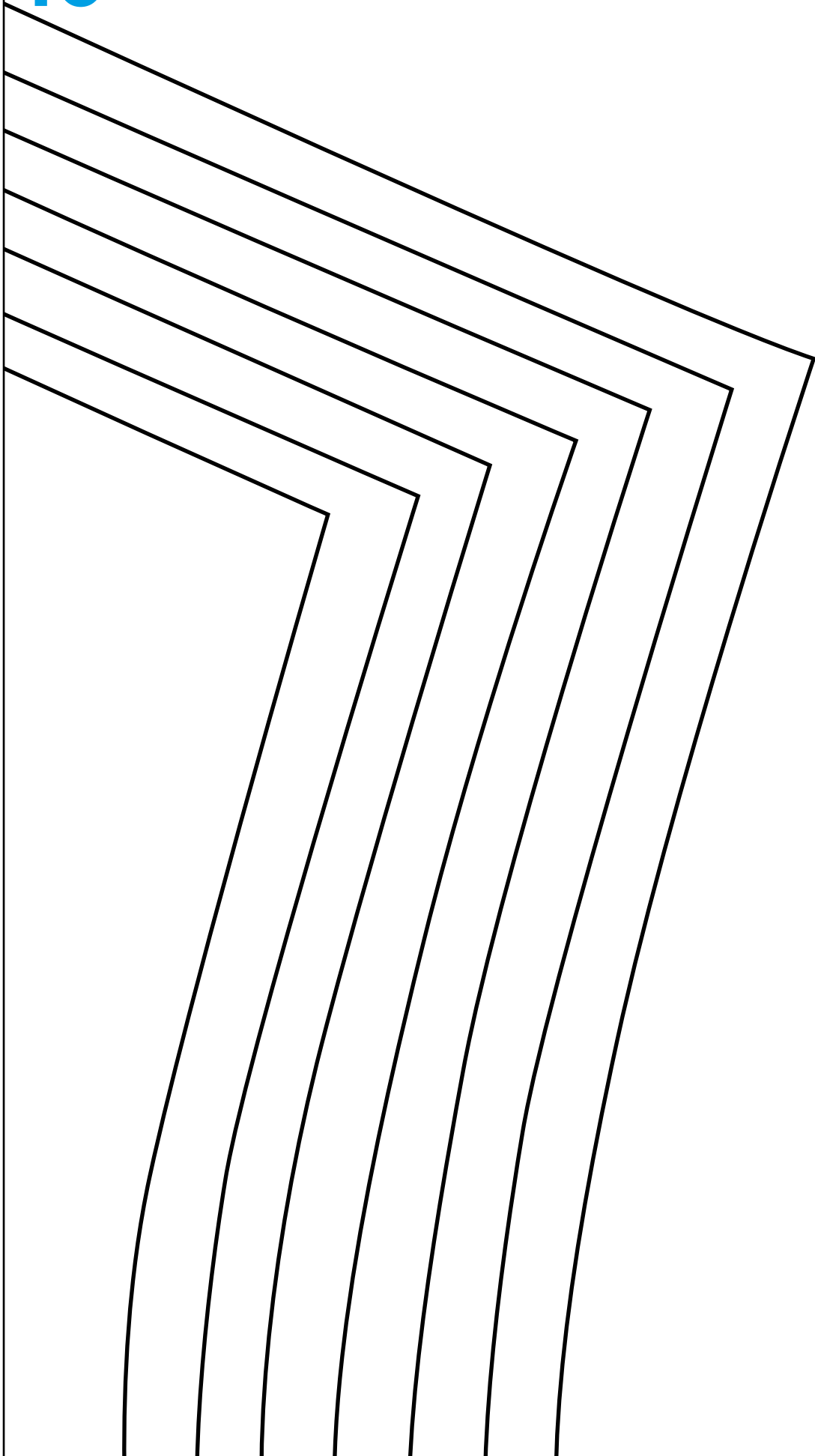
8



9



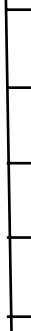
10



11



8



20

ZIP NOTCH



BAC
CLIT

12

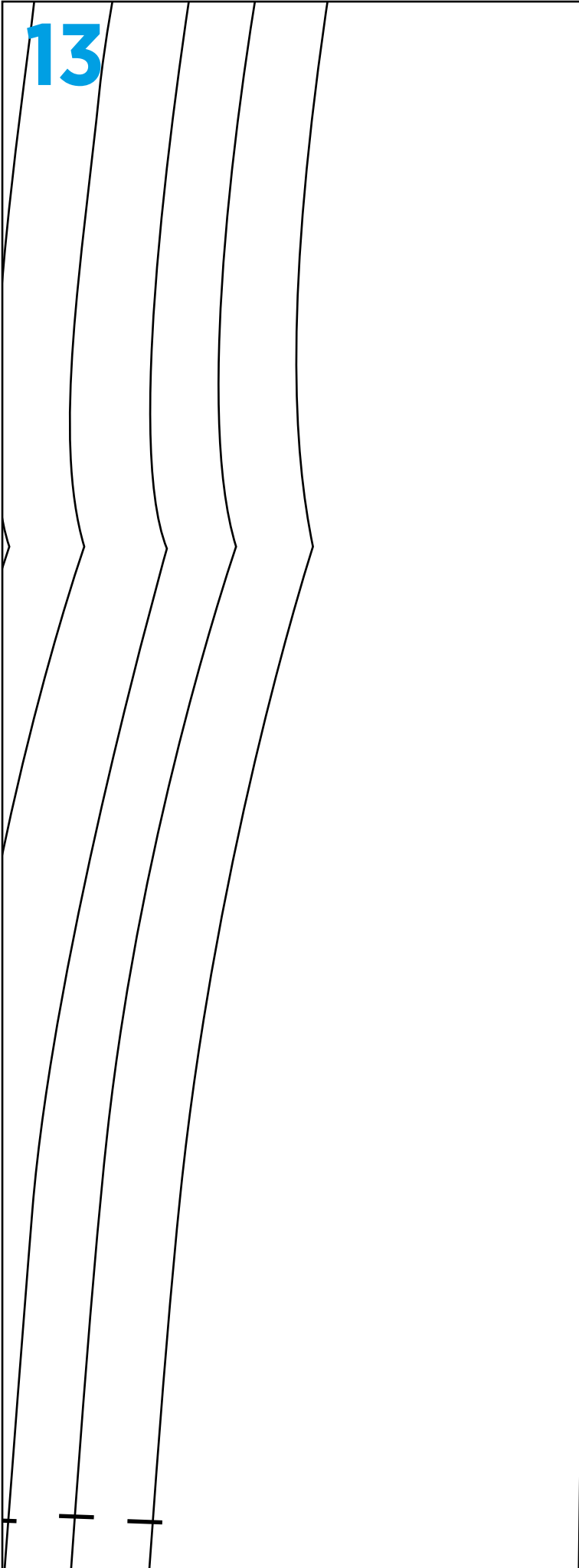


K

V 1 DAID



13



PLACE ON FOLD

C F

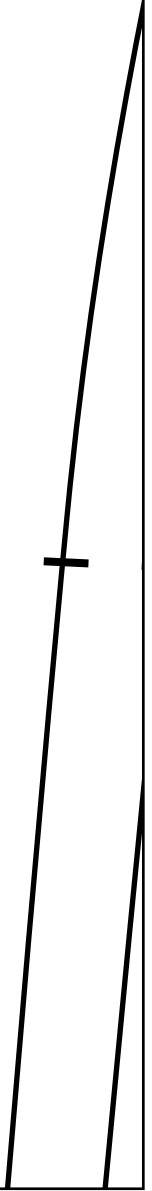


14

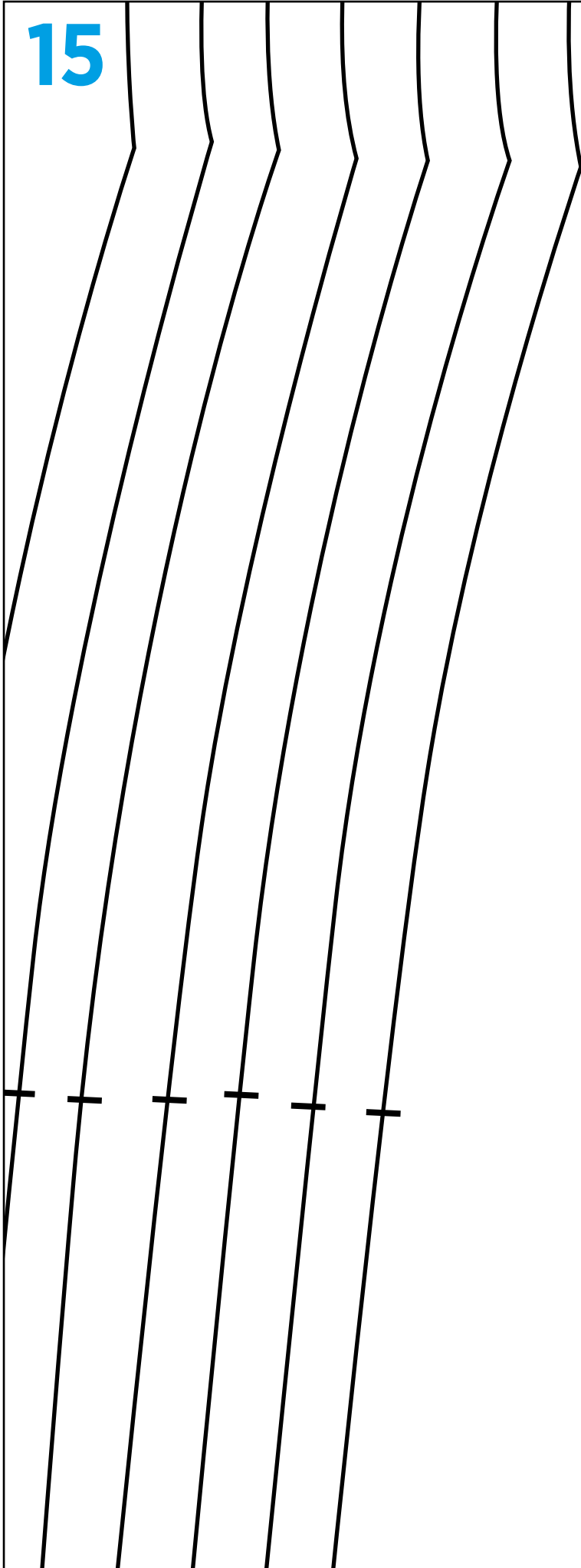


FRONT

CUT X 1 ON FOLD



15

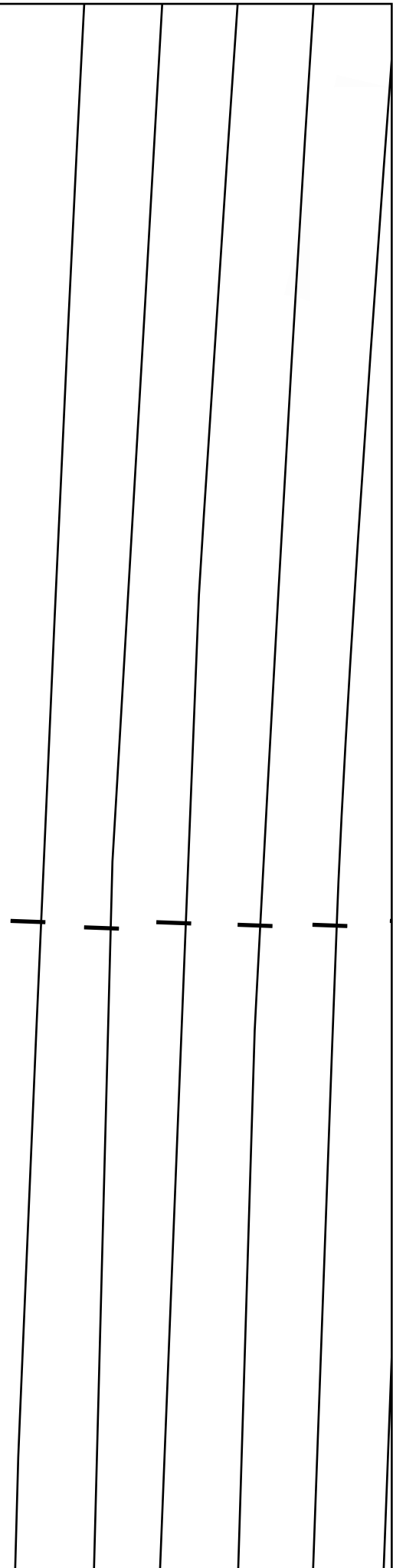


16

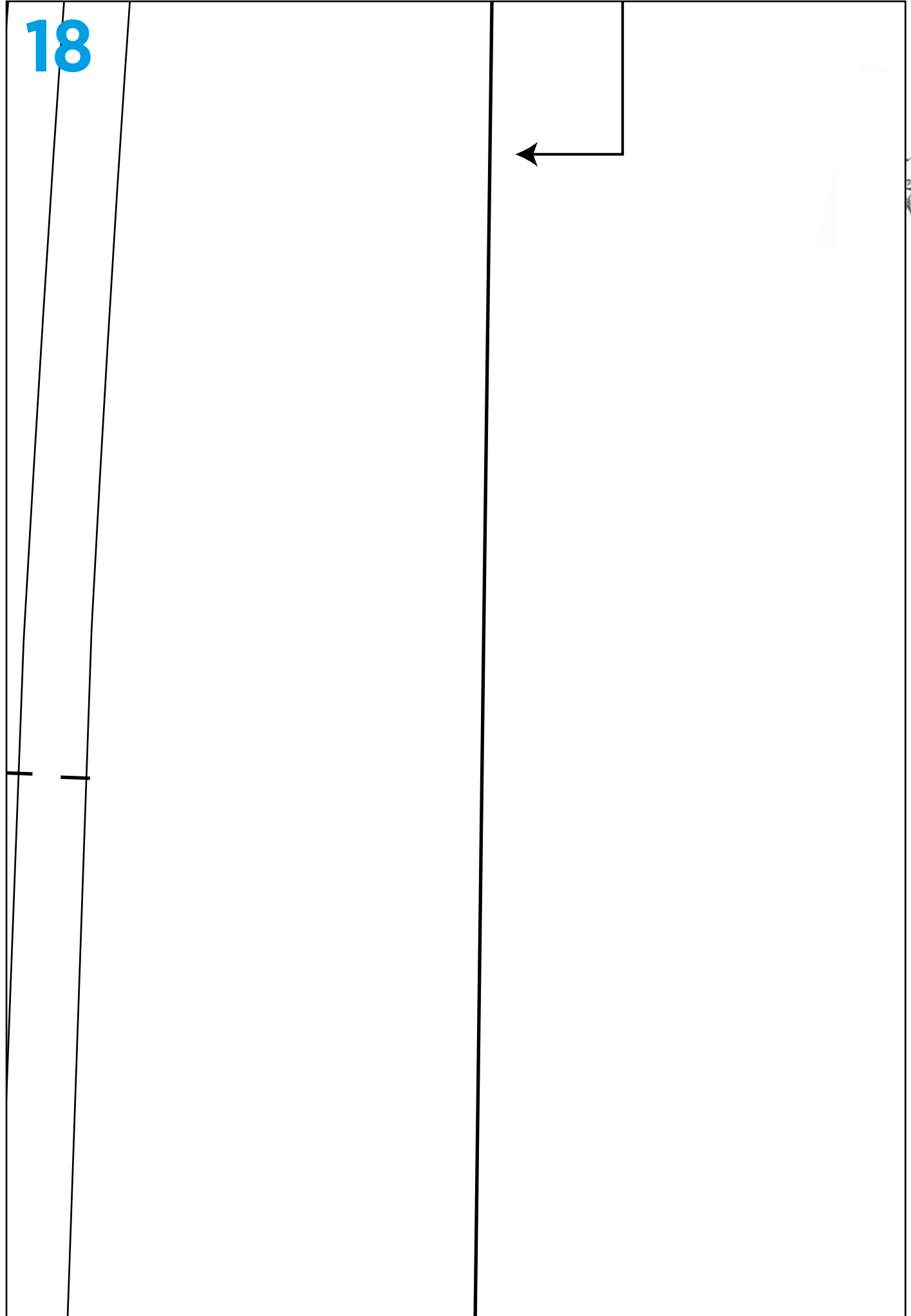
CUT

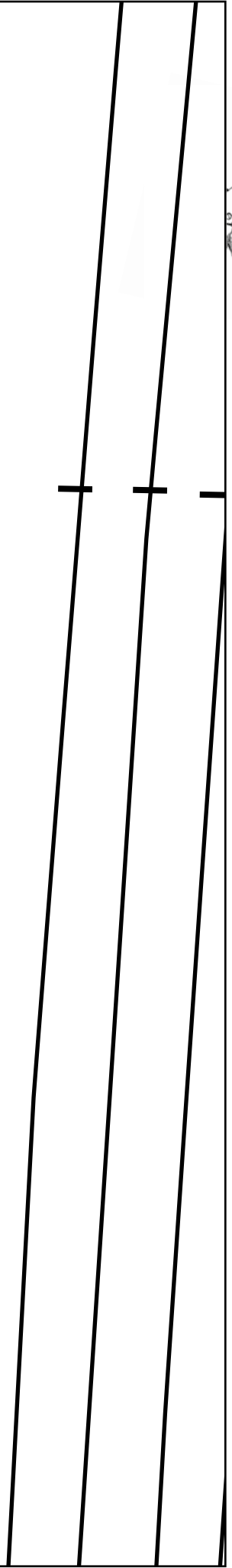


17 A T PAIR



18





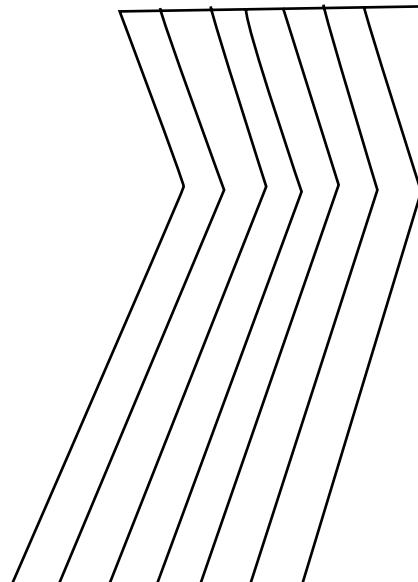
20





22





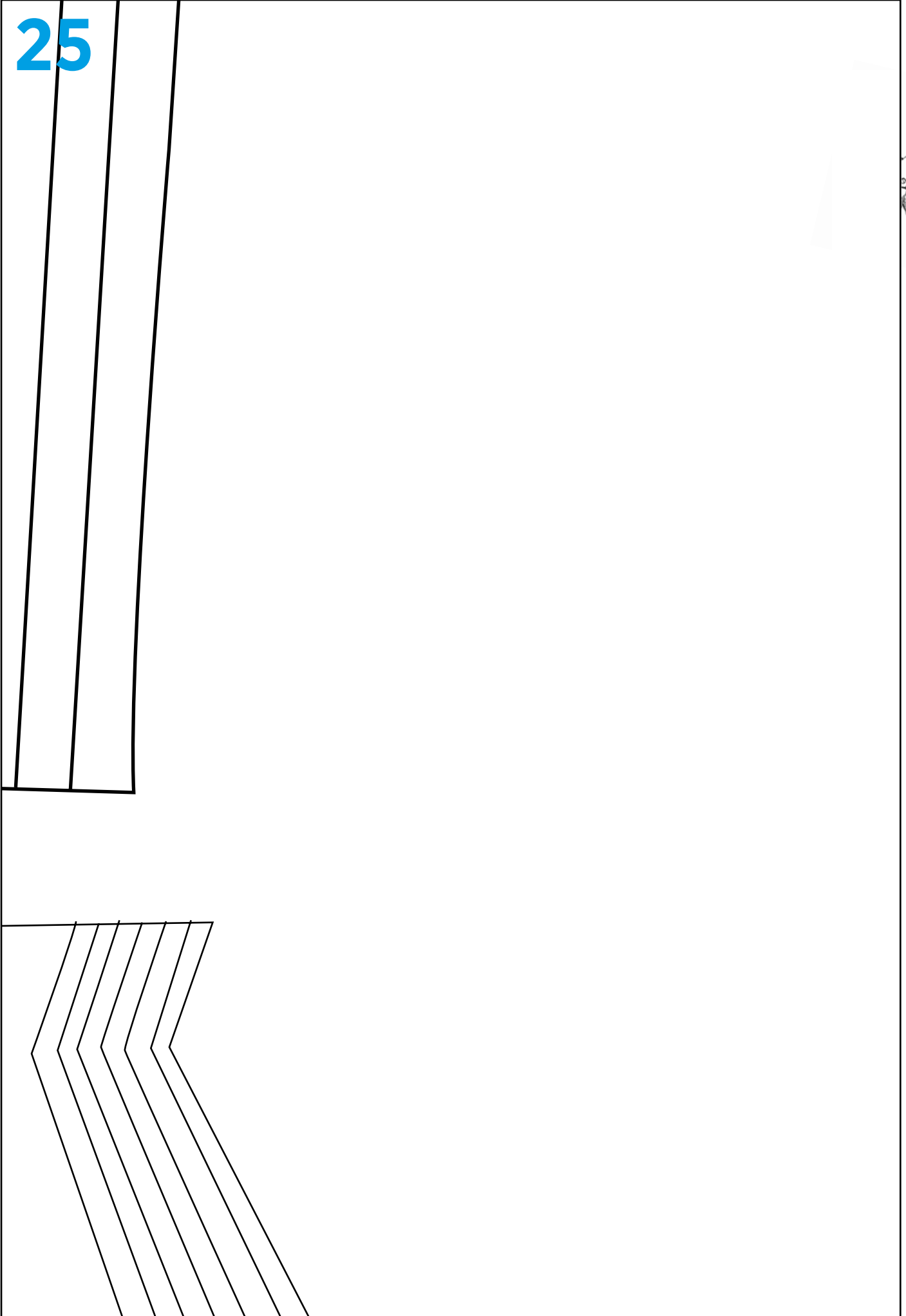
24



CUT
SLIT

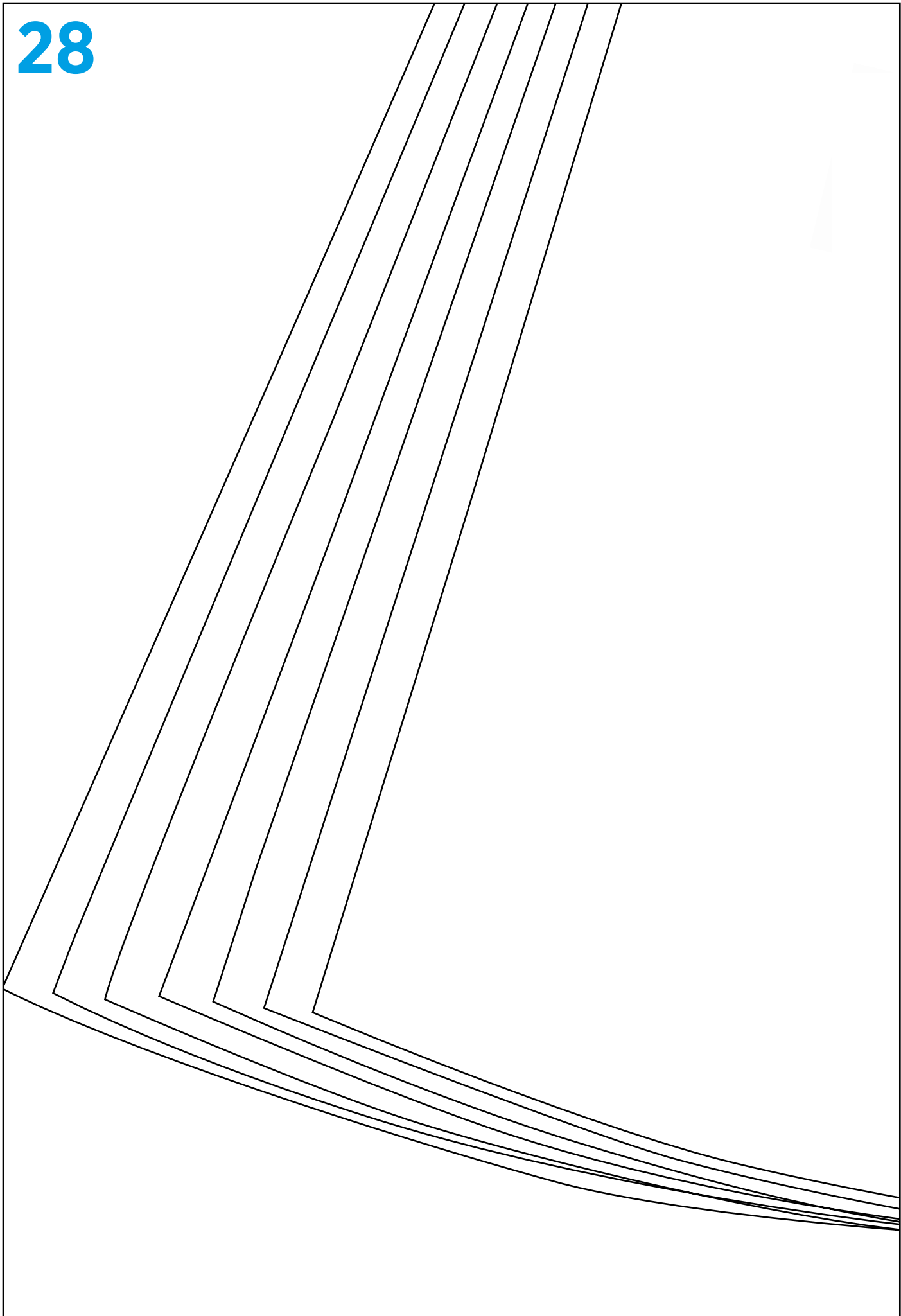


25







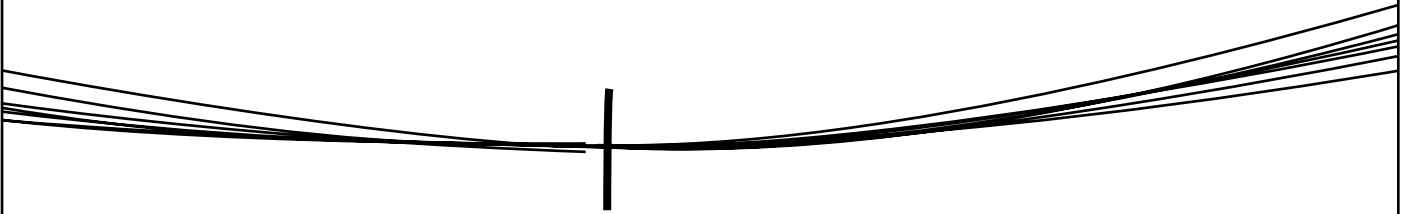




EVE

TX 1 PAIR

29



30

