

ROSA DRESS PATTERN

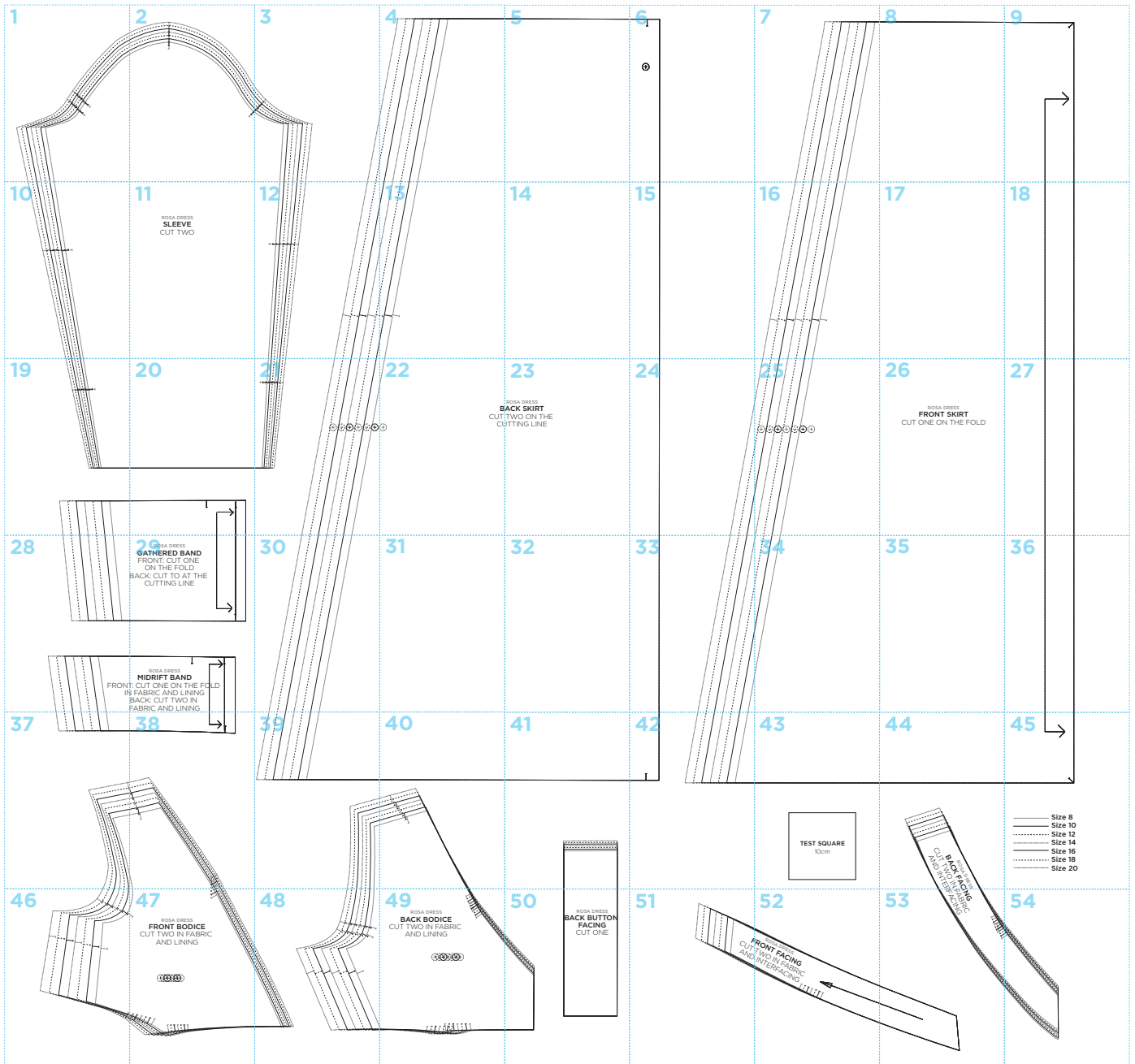
Use these guides to get started today

IN YOUR PRINT MENU, UNDER SIZE OPTIONS, BE SURE TO
SELECT '**ACTUAL SIZE**', INSTEAD OF 'FIT TO PAGE'

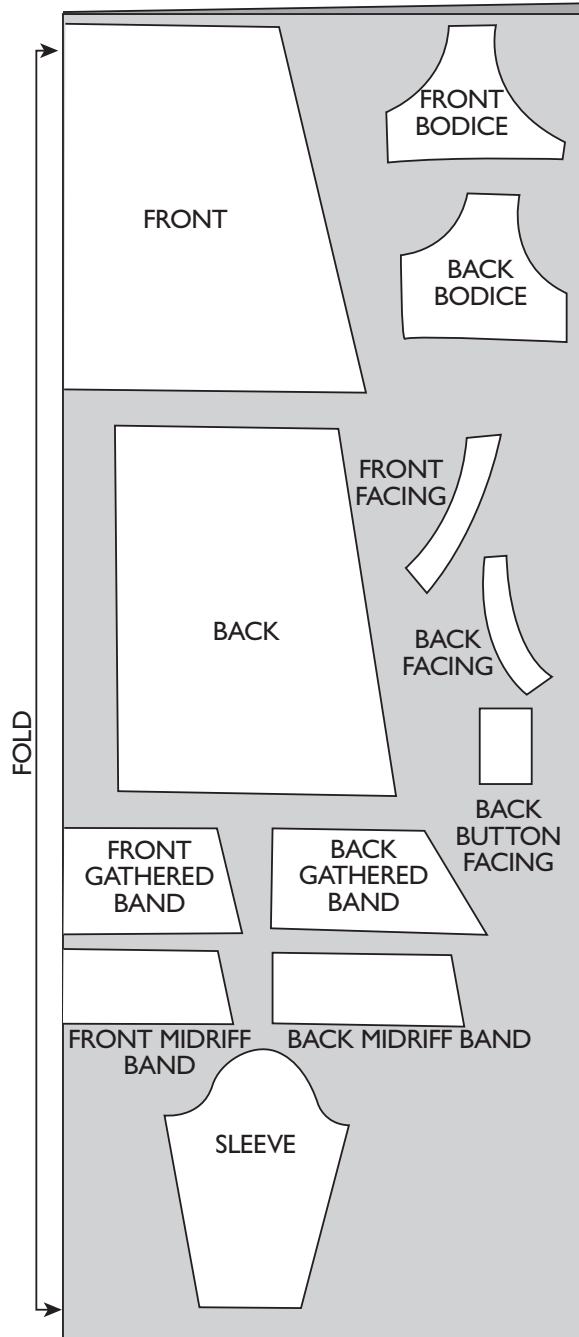
Title: Rosa Dress
Designer: Posner and Posner
Magazine page: 30



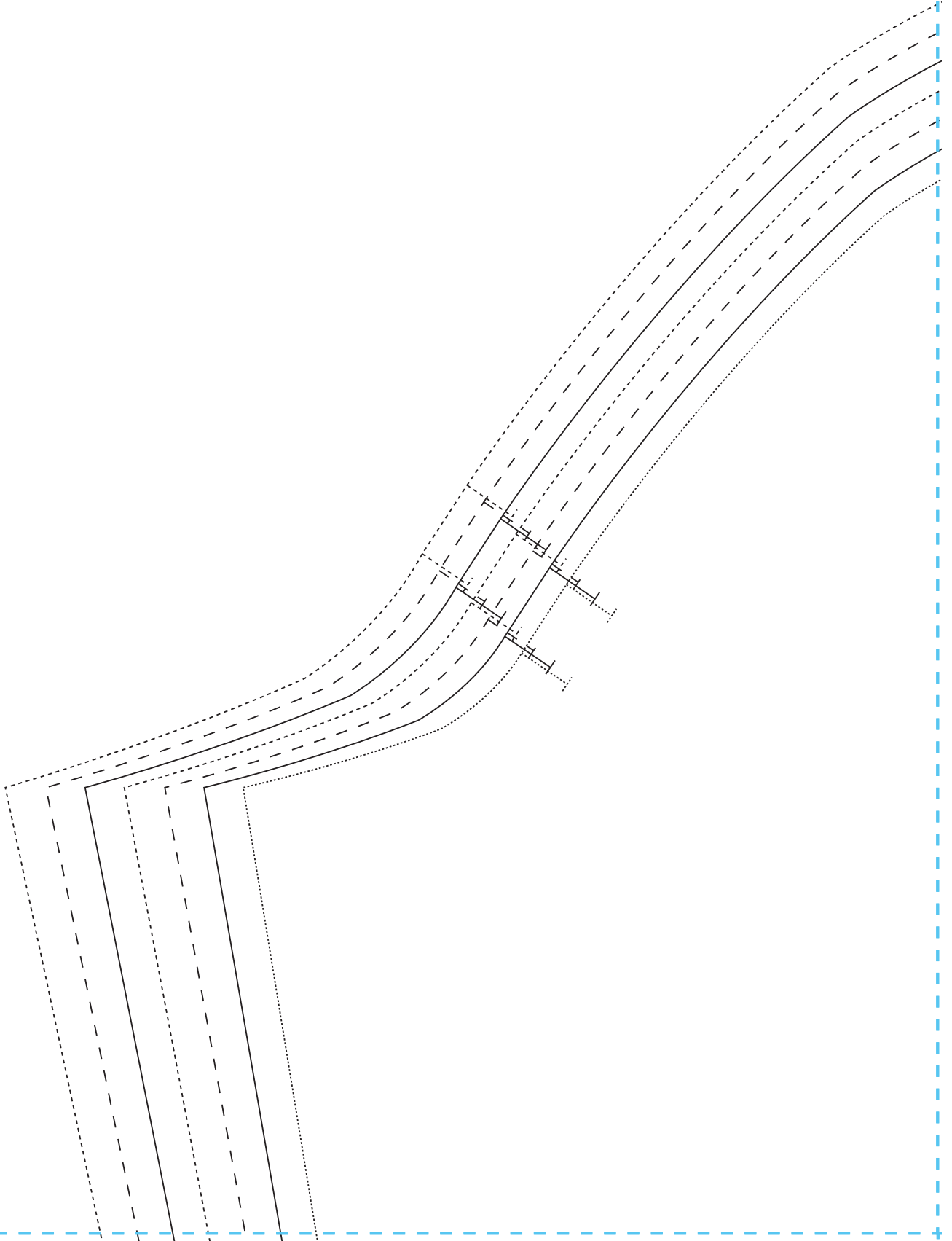
ROSA DRESS PATTERN LAYOUT



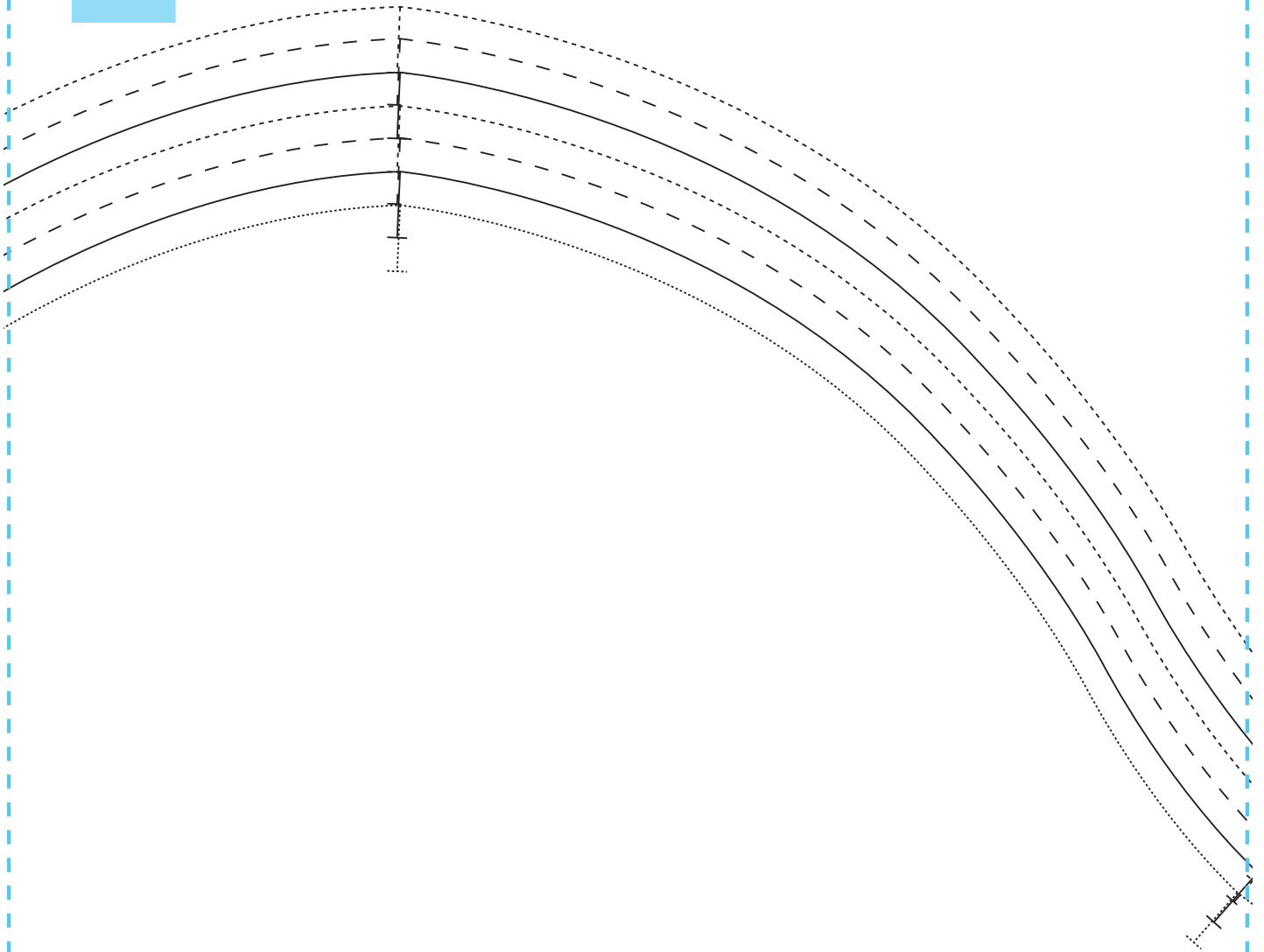
LAYPLAN



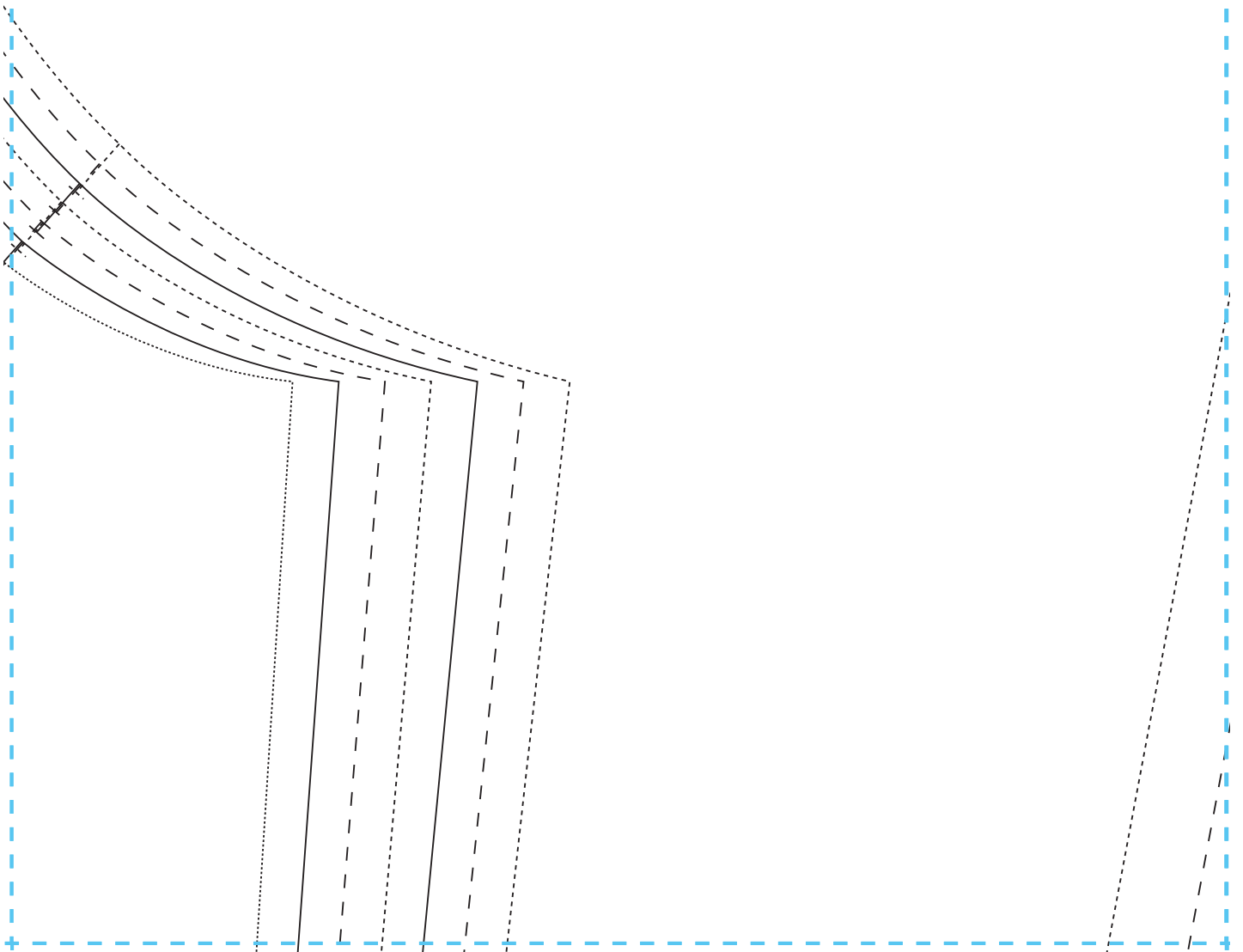
1



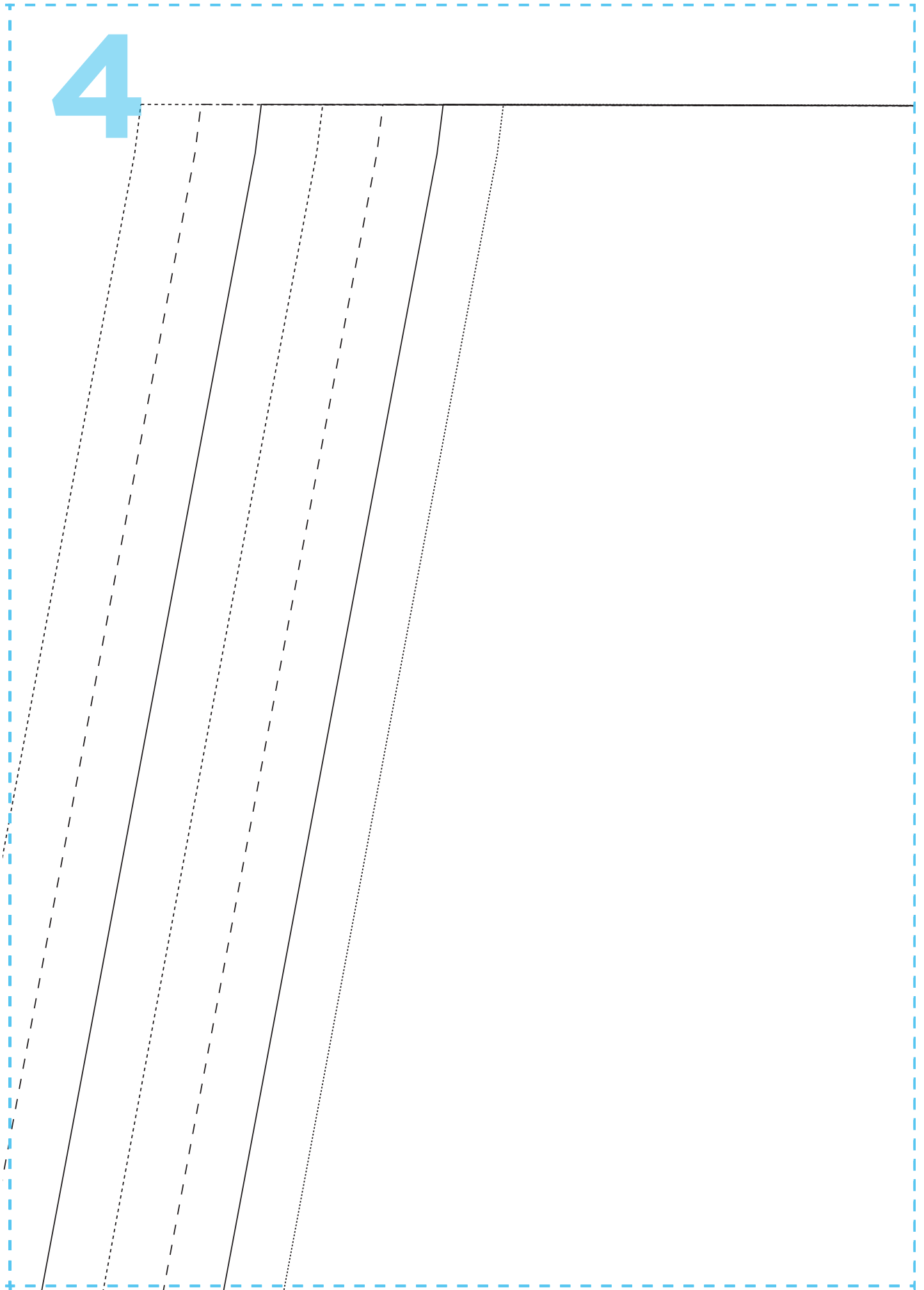
2



3



4

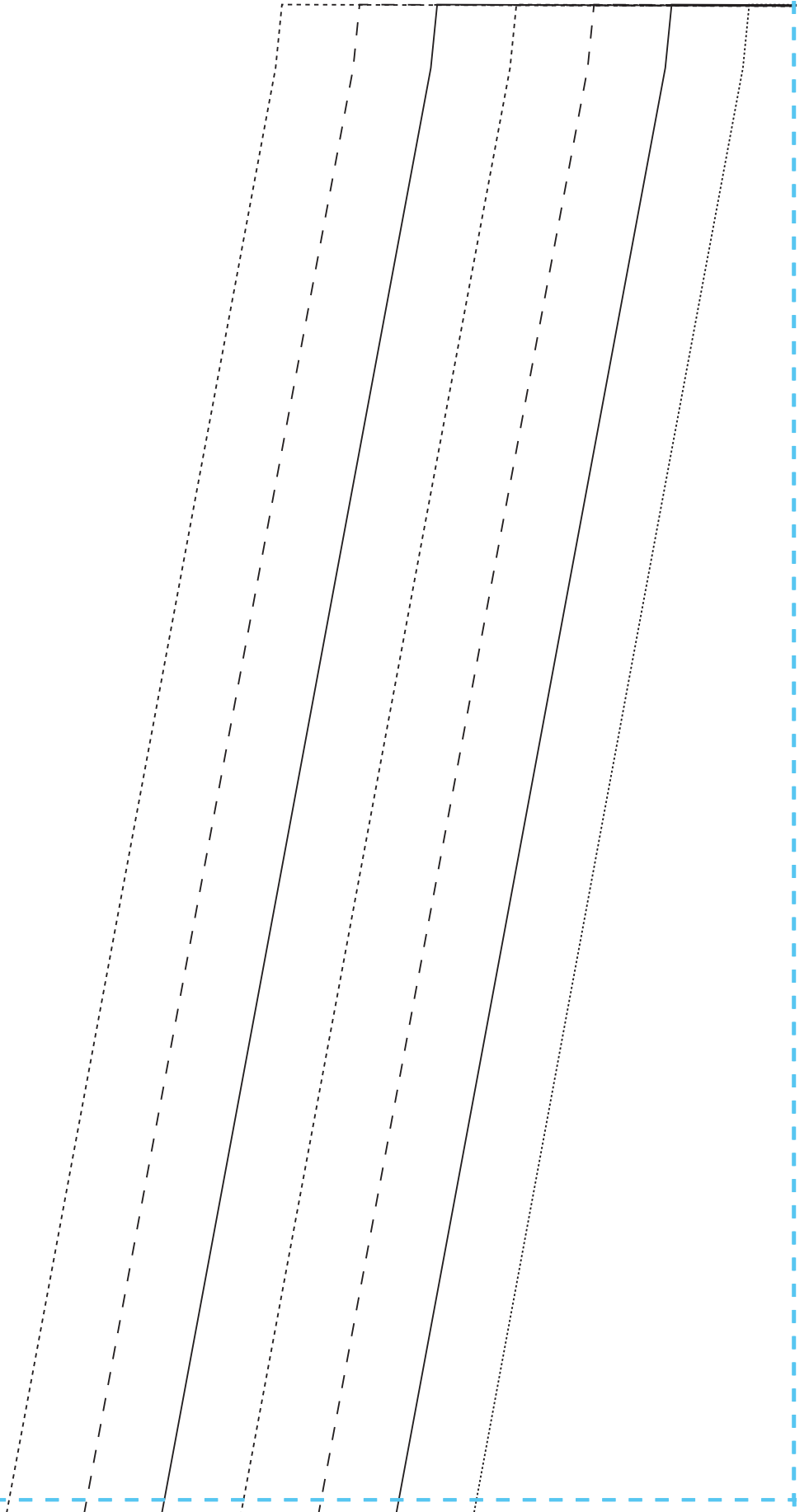


5

6

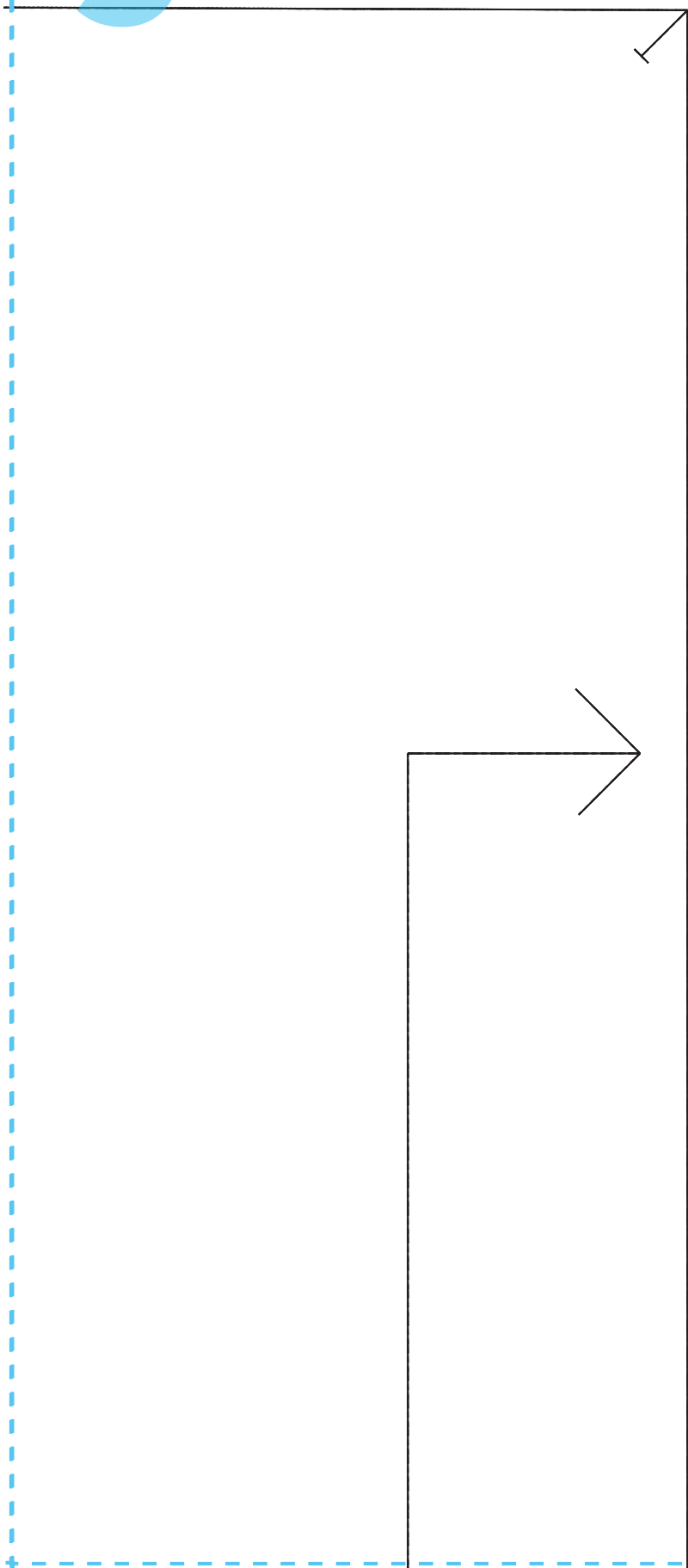


7

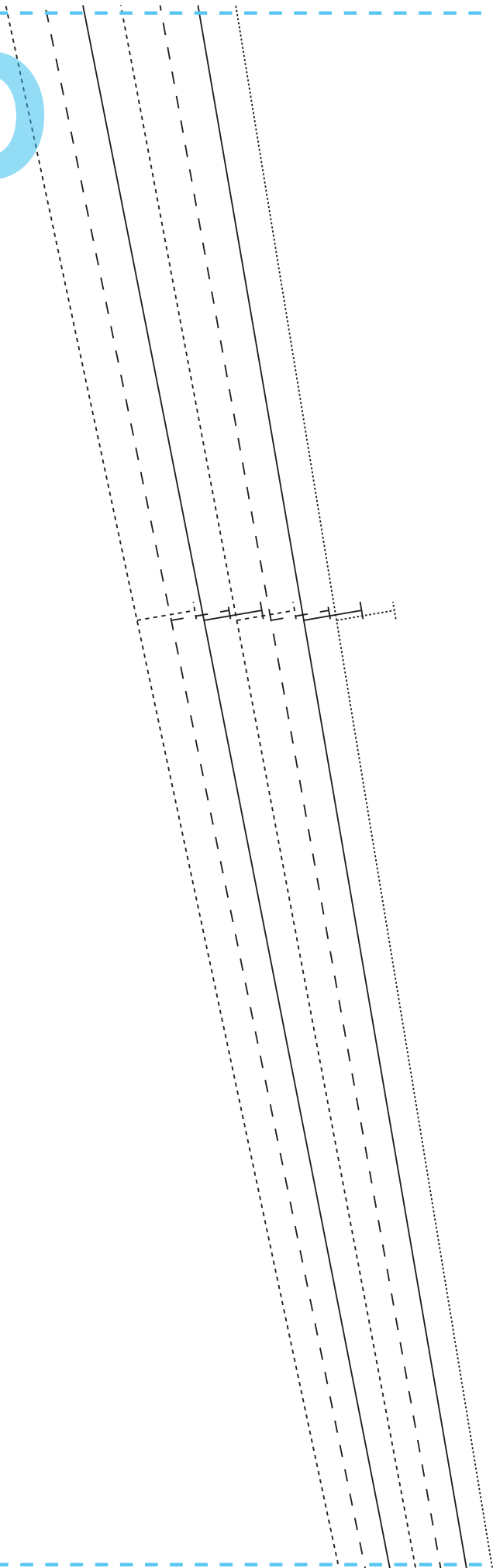


8

9



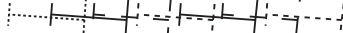
10



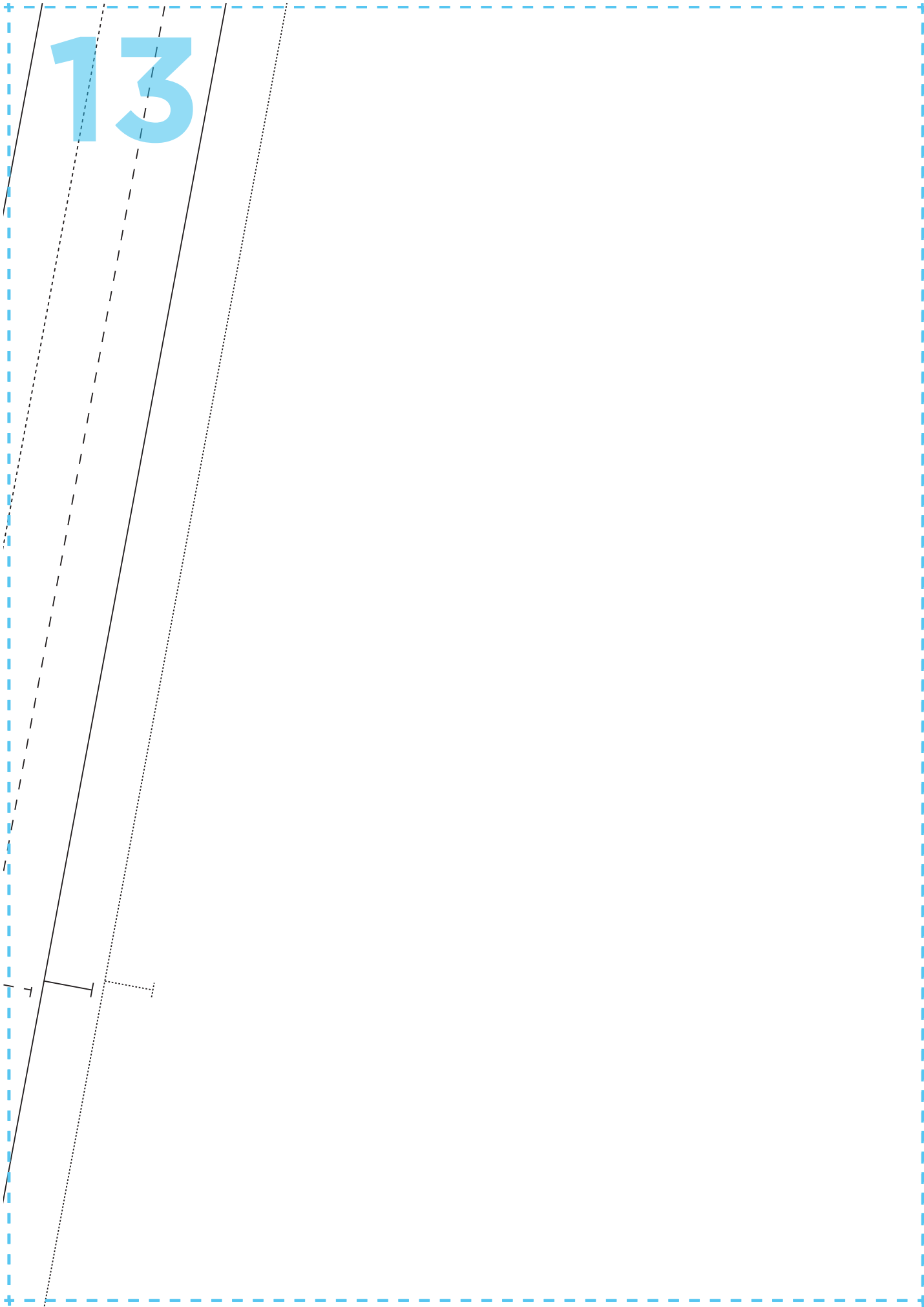
11

ROSA DRESS
SLEEVE
CUT TWO

12



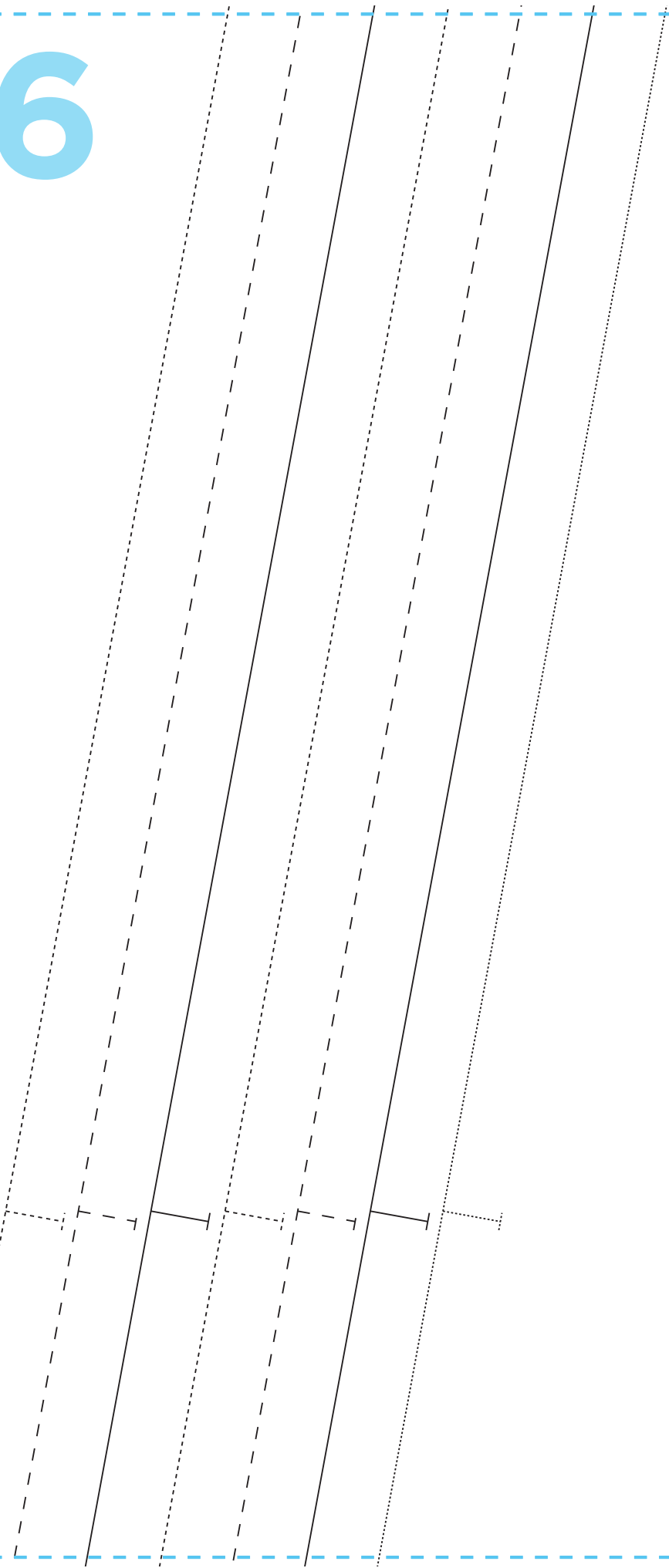
13



14

15

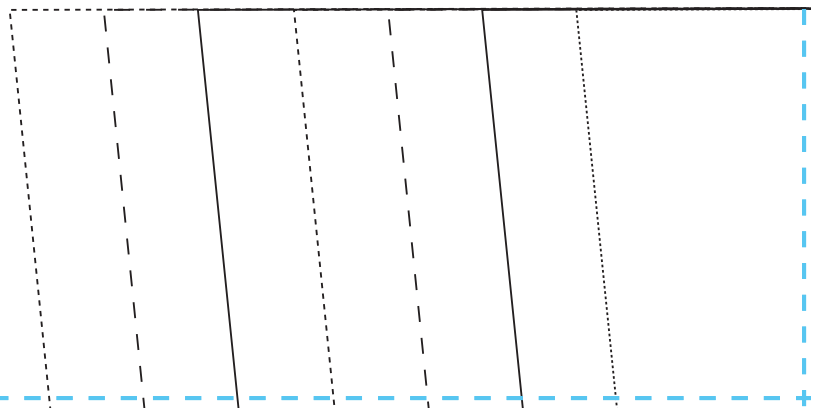
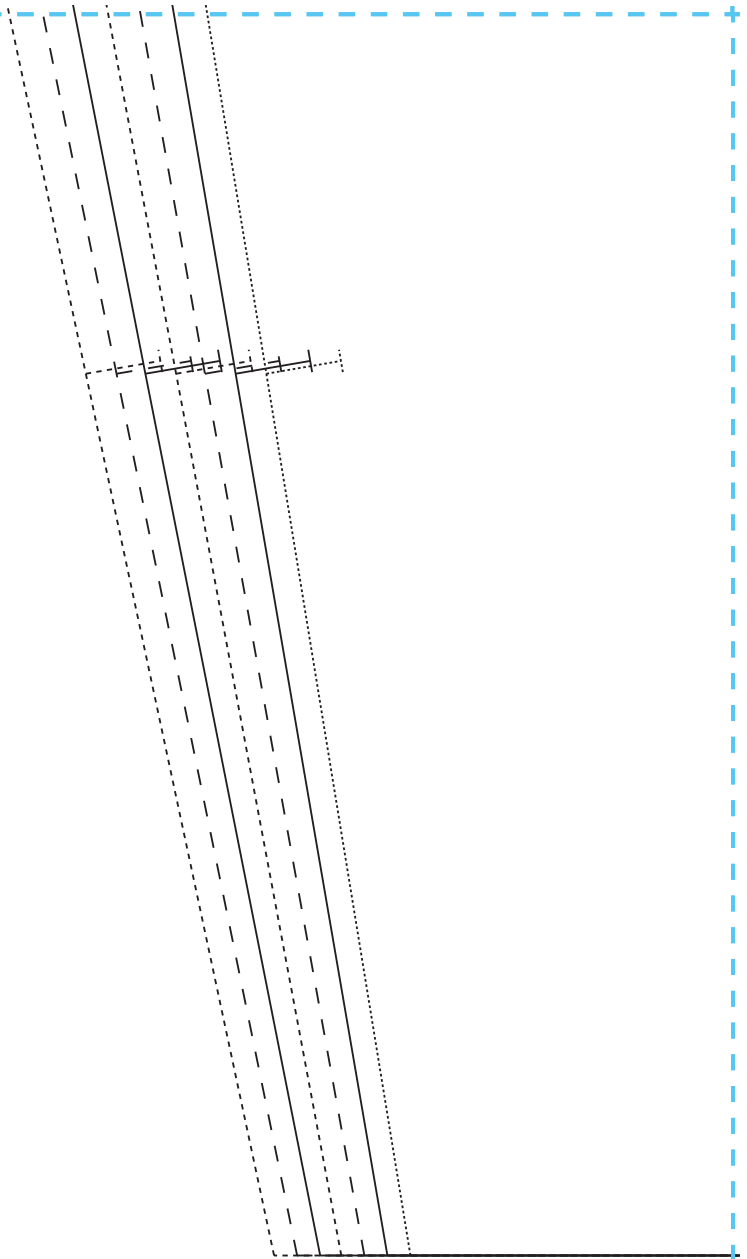
16



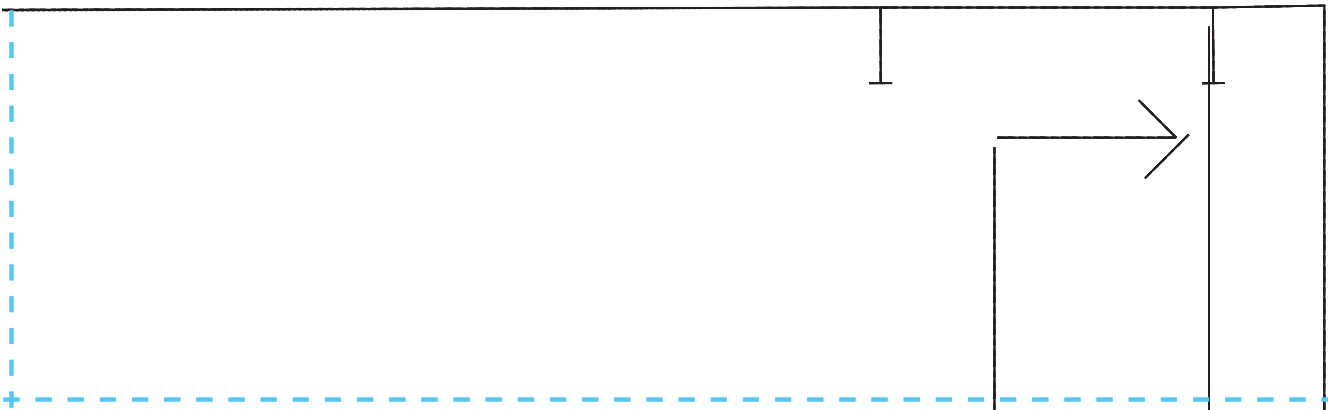
17

18

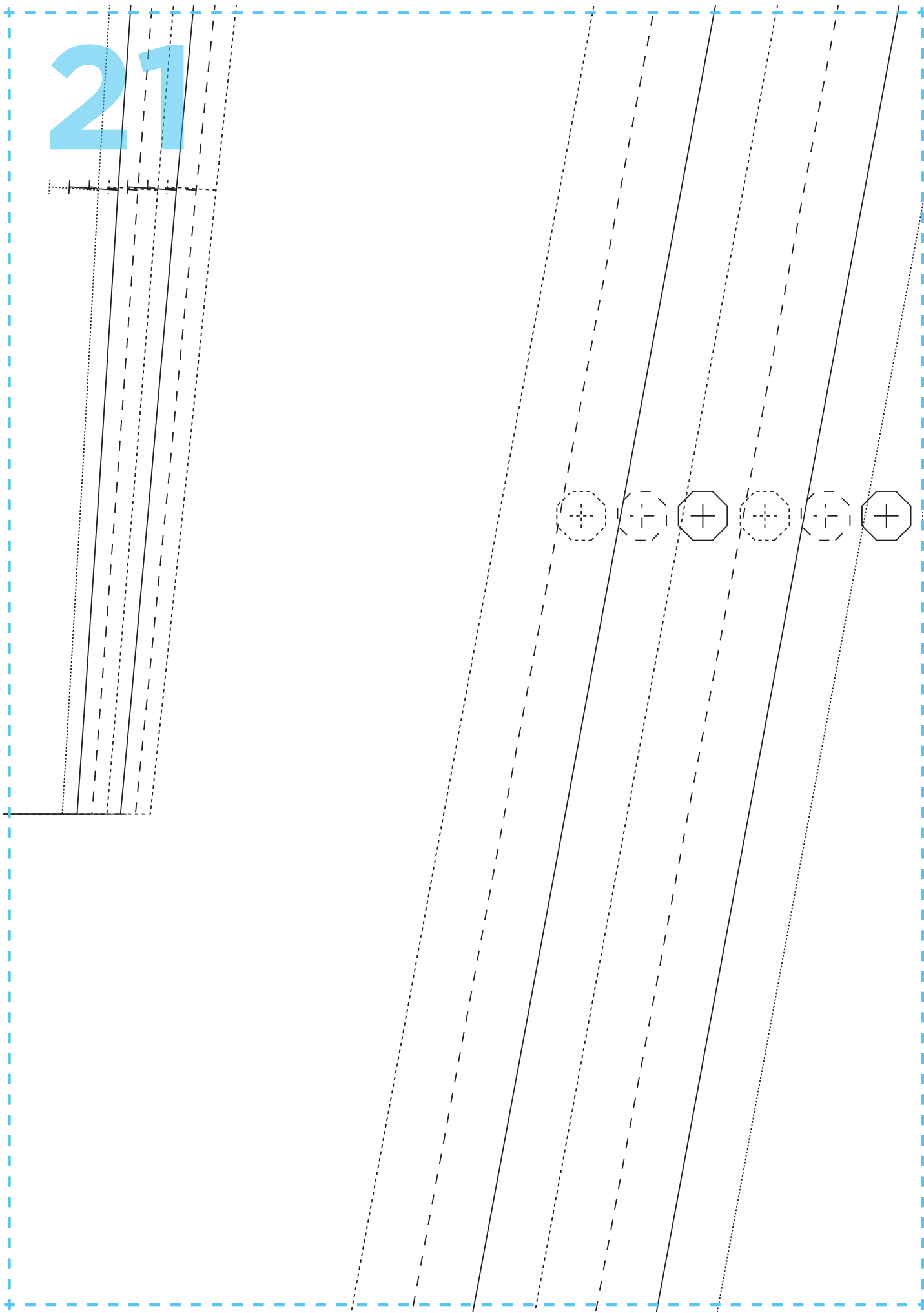
19



20



21



22



B
CUT
CL

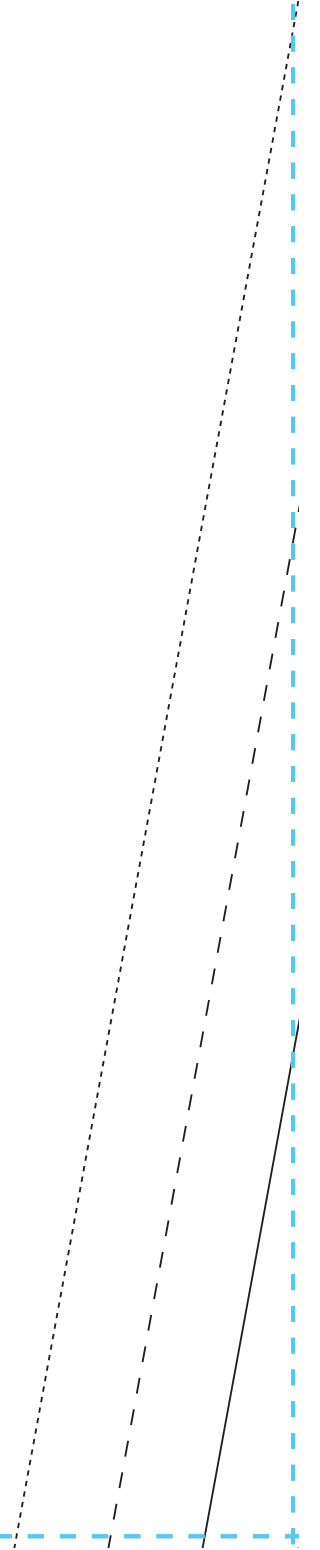
23

ROSA DRESS

BACK SKIRT

TWO ON THE
DOTTING LINE

24



25

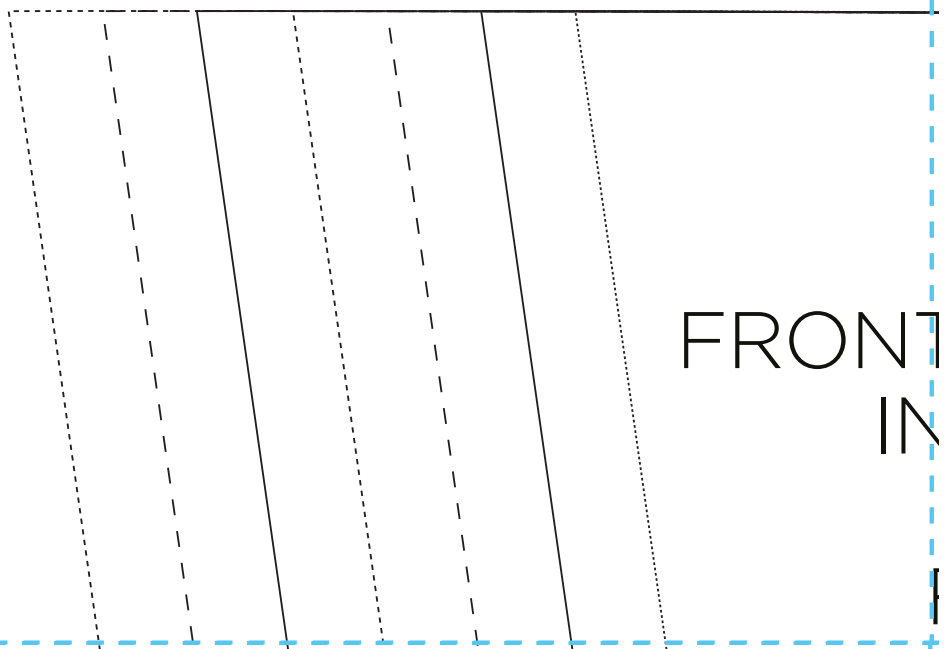
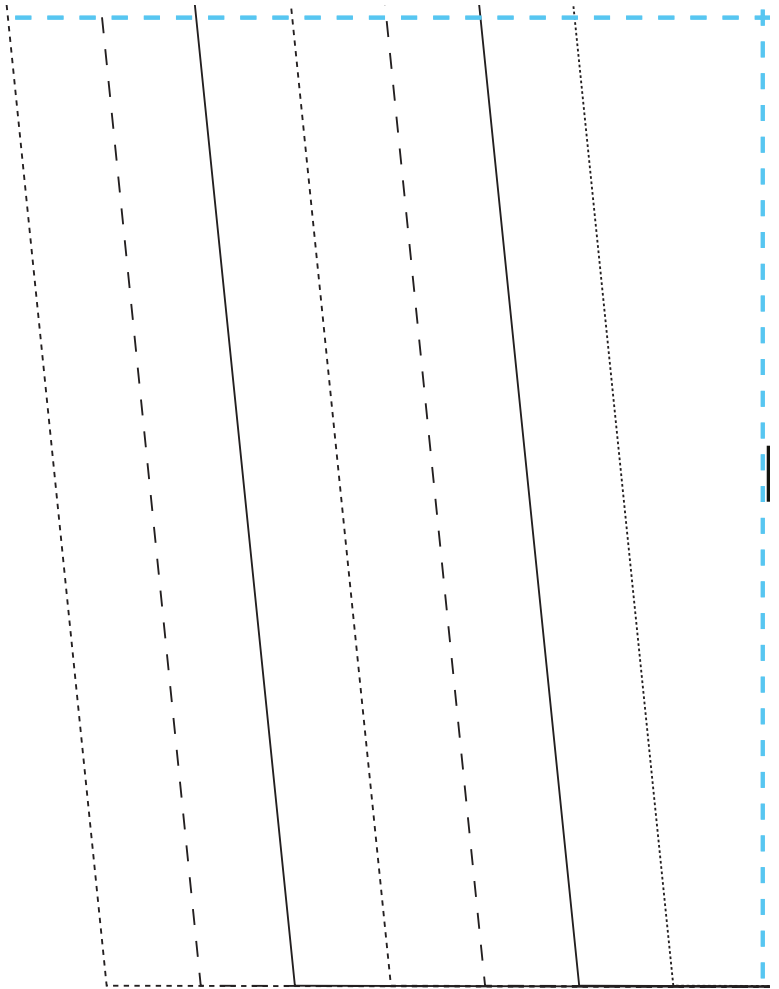


26

ROSA DRESS
FRONT SKIRT
CUT ONE ON THE FOLD

27

28



FRONT
IN

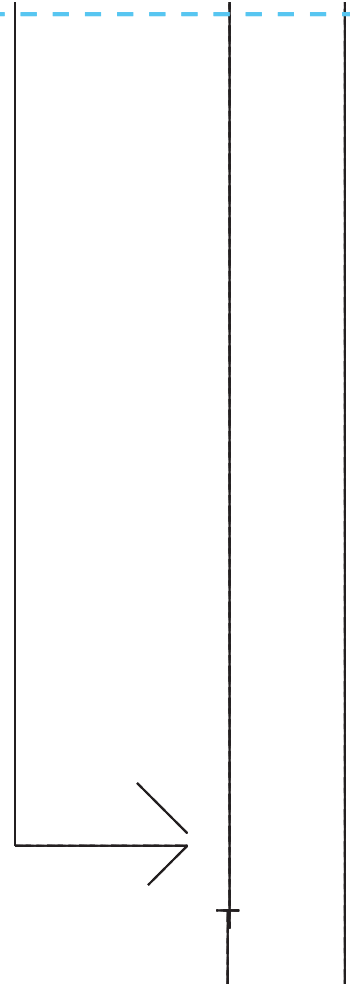
29

ROSA DRESS

GATHERED BAND

FRONT: CUT ONE
ON THE FOLD

BACK: CUT TO AT THE
CUTTING LINE

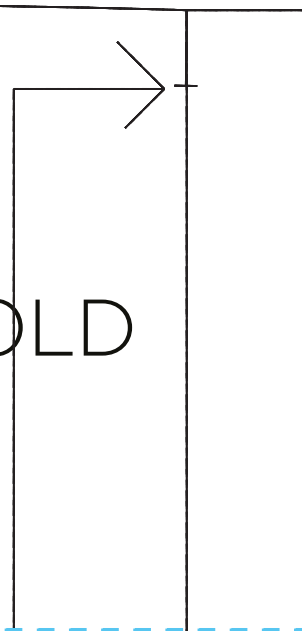


ROSA DRESS

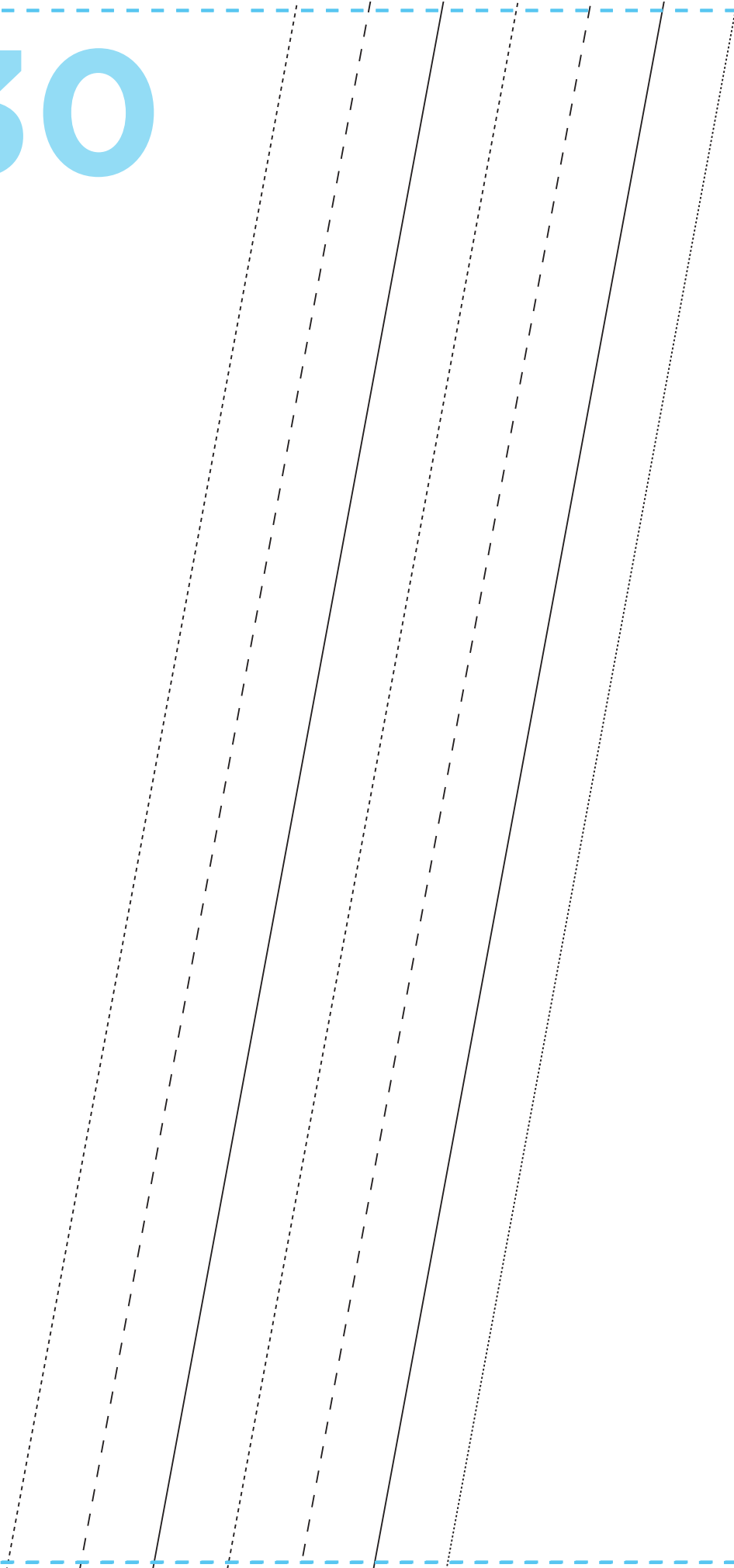
MIDRIFT BAND

FRONT: CUT ONE ON THE FOLD
FABRIC AND LINING

BACK: CUT TWO IN
FABRIC AND LINING



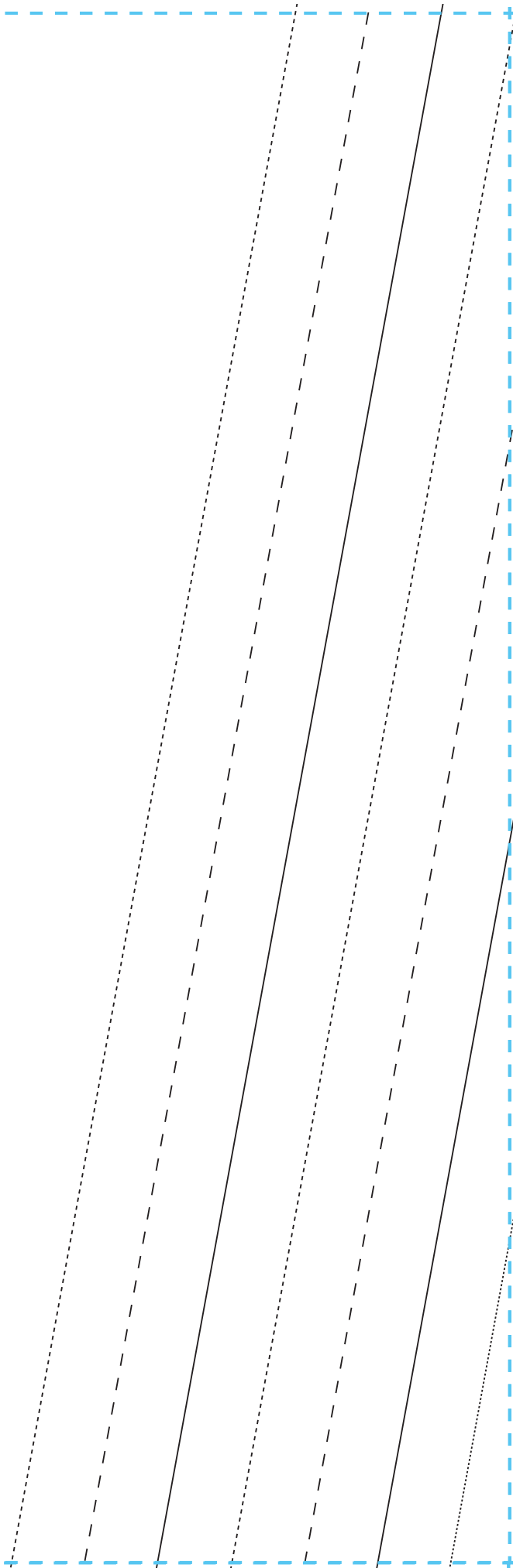
30



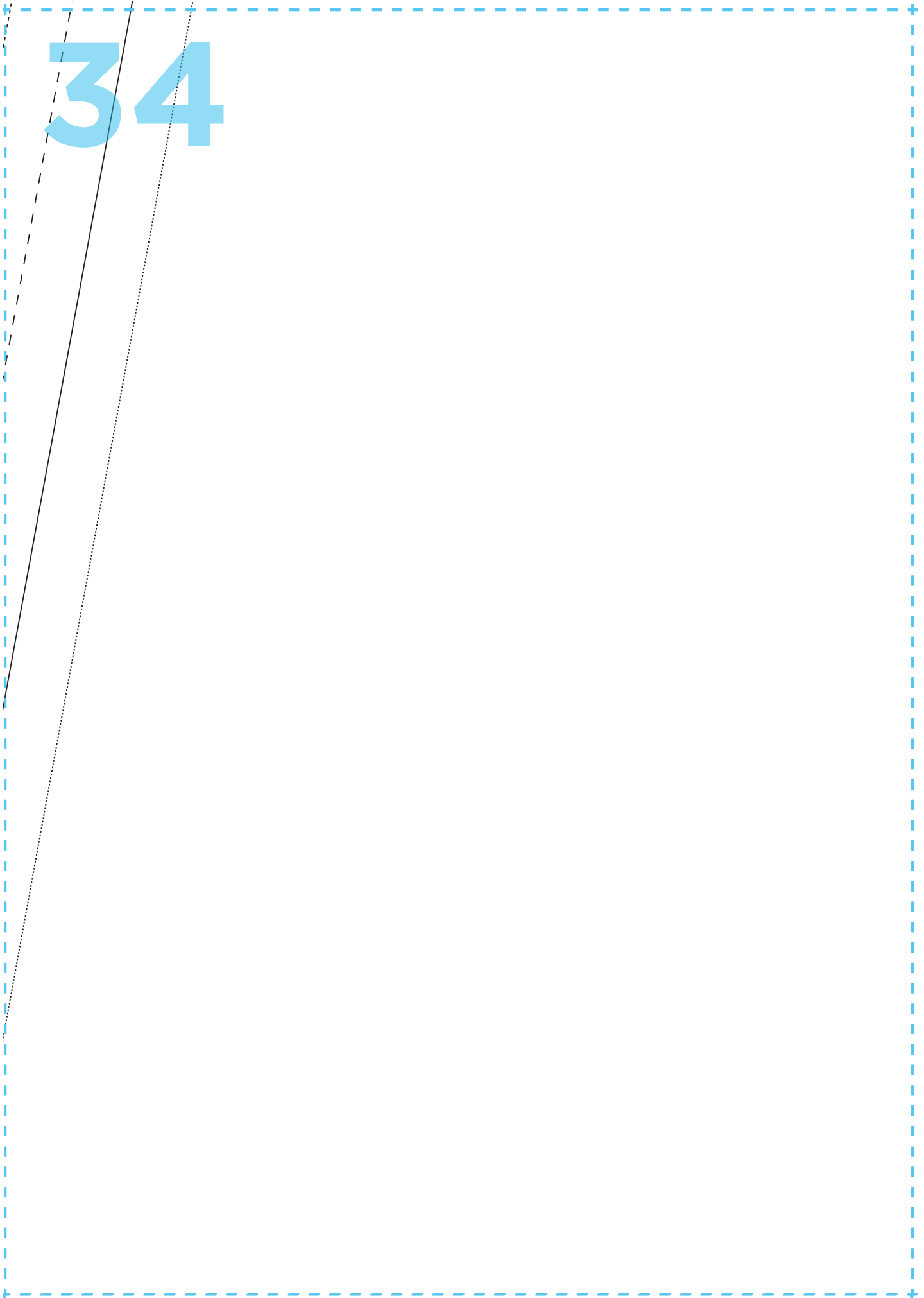
31

32

33



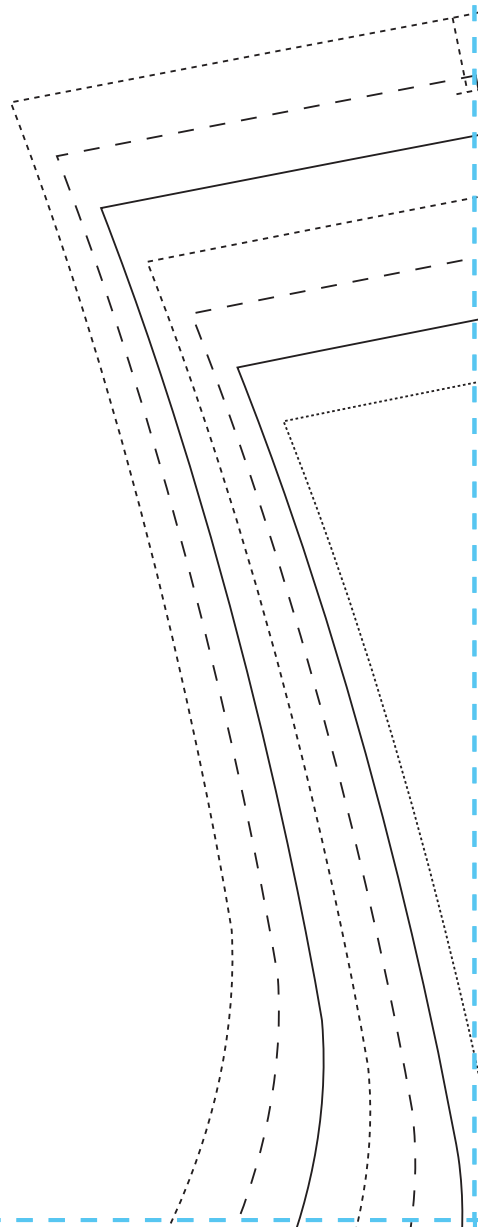
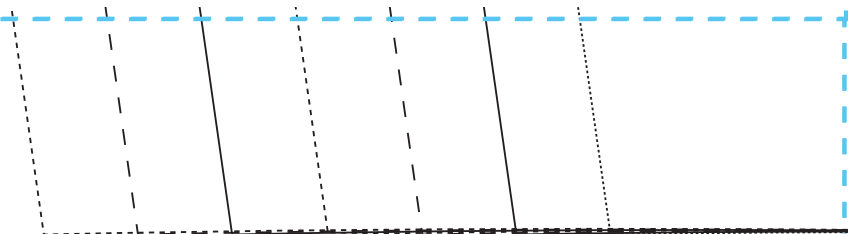
34



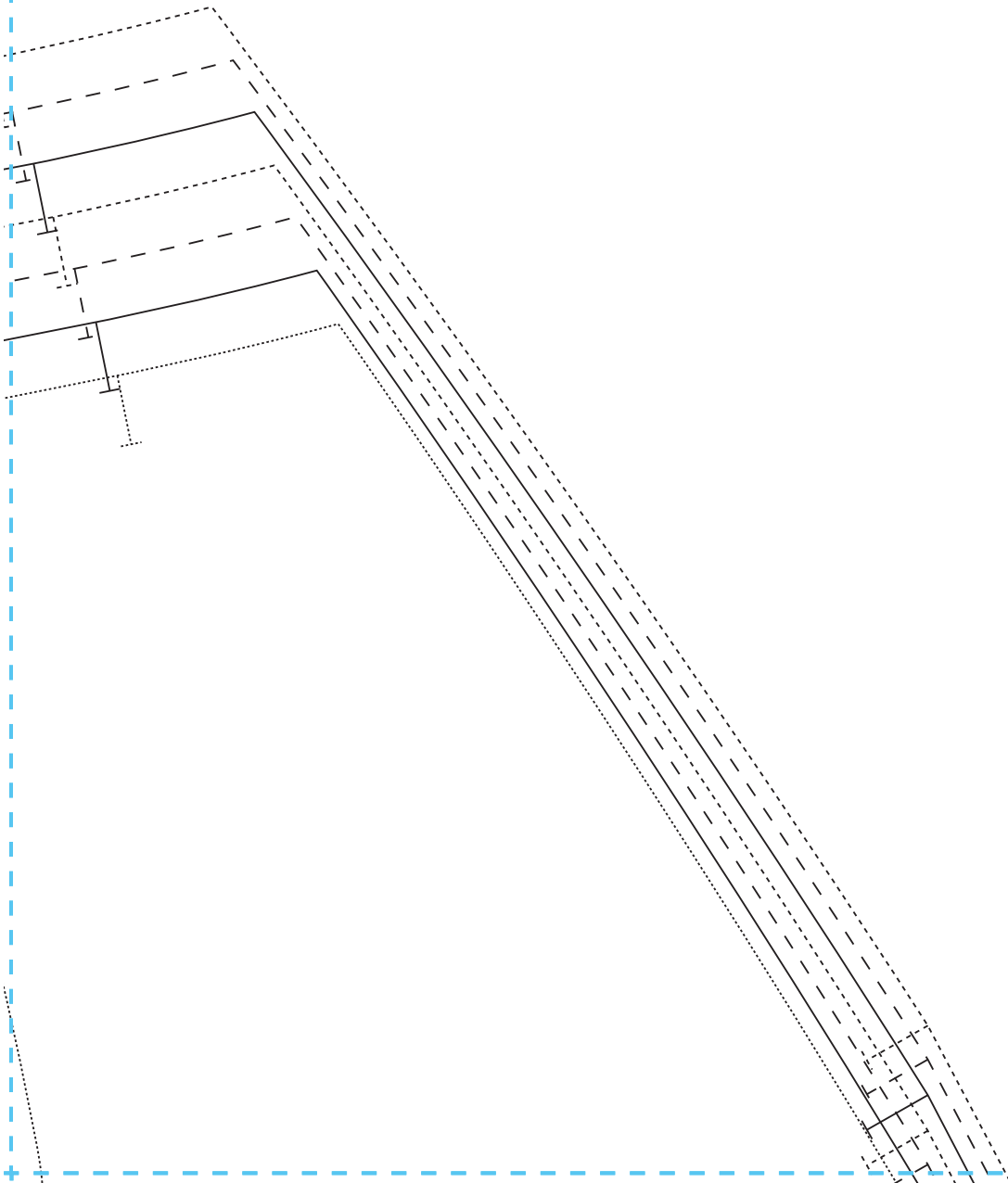
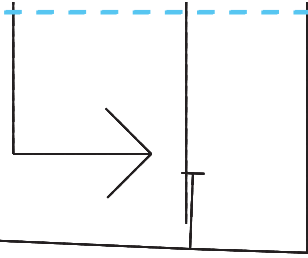
35

36

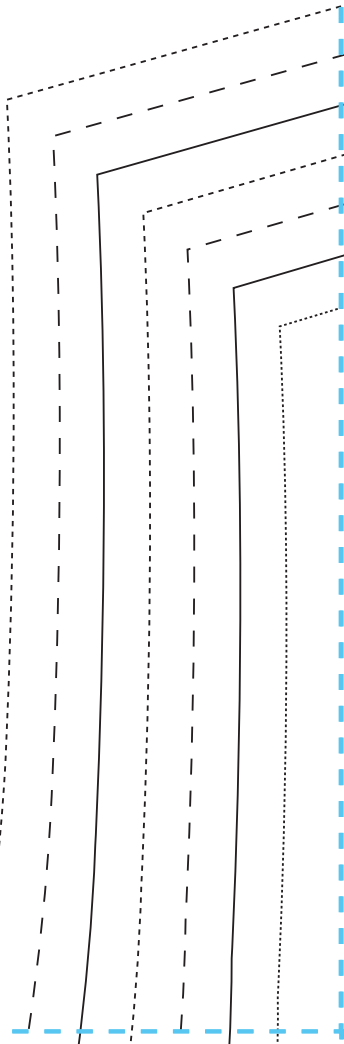
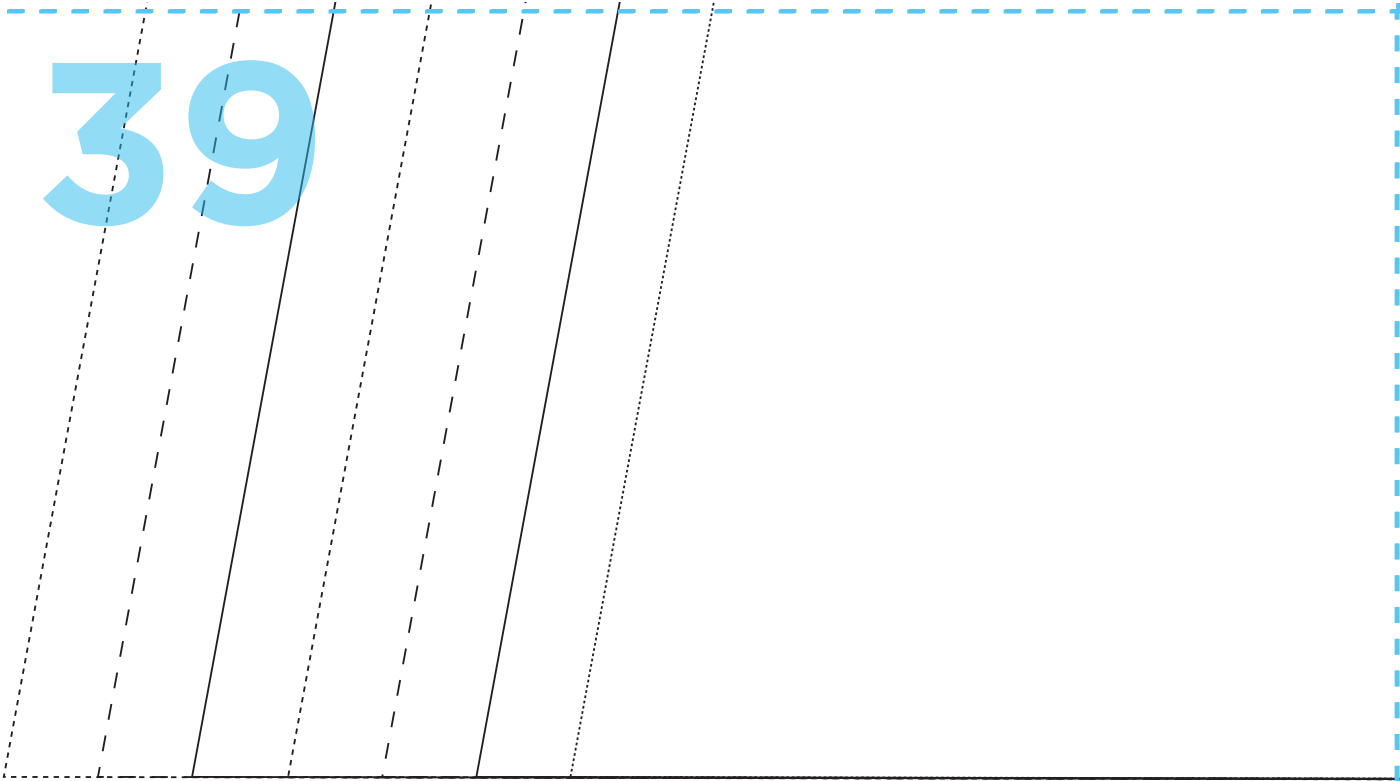
37



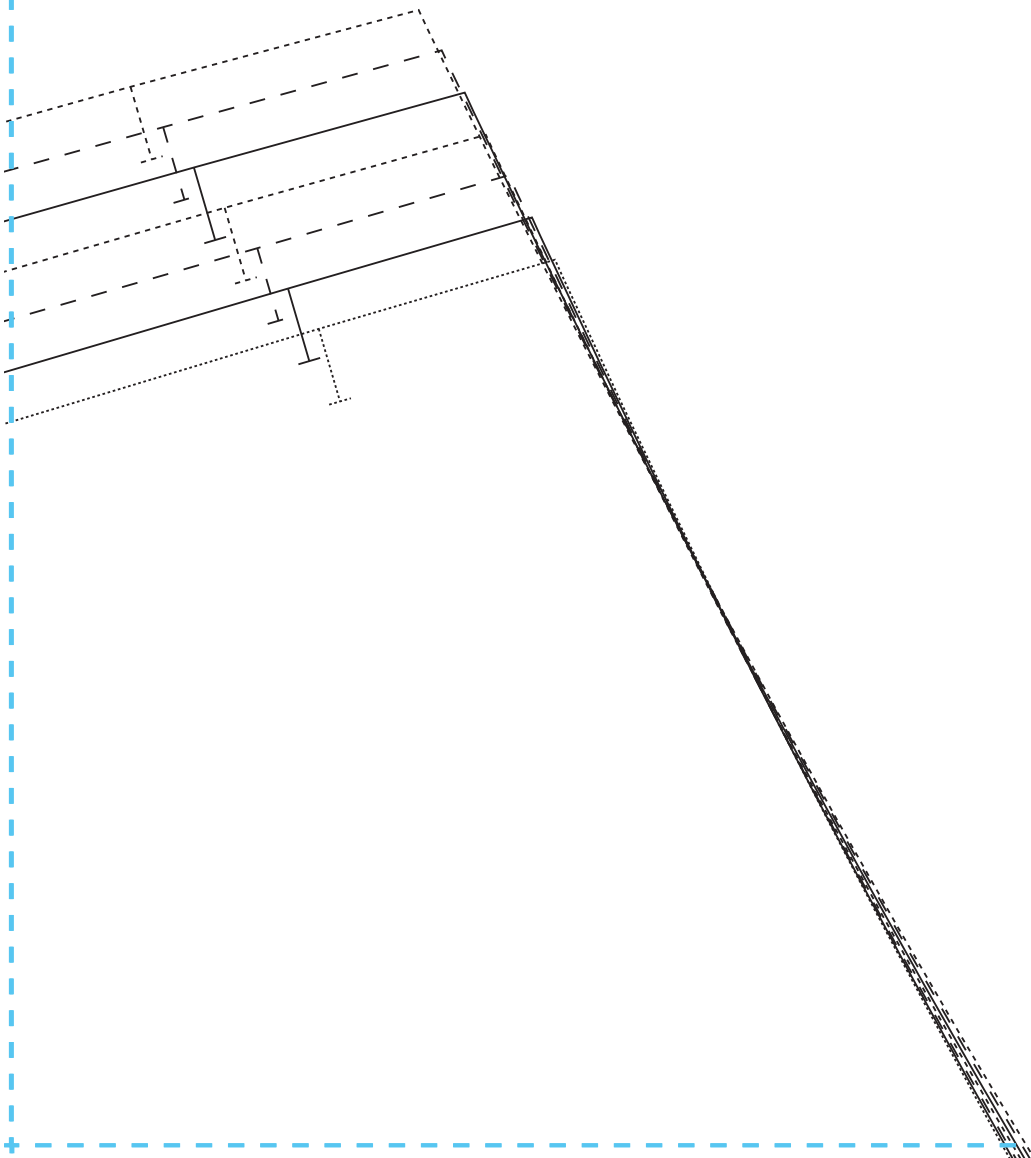
38



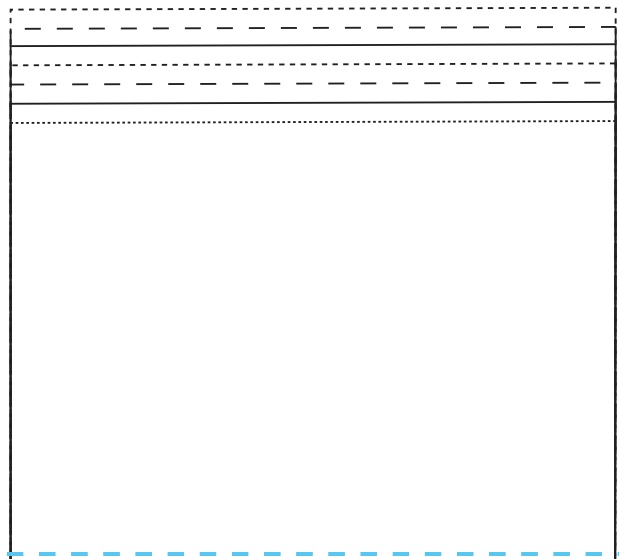
39



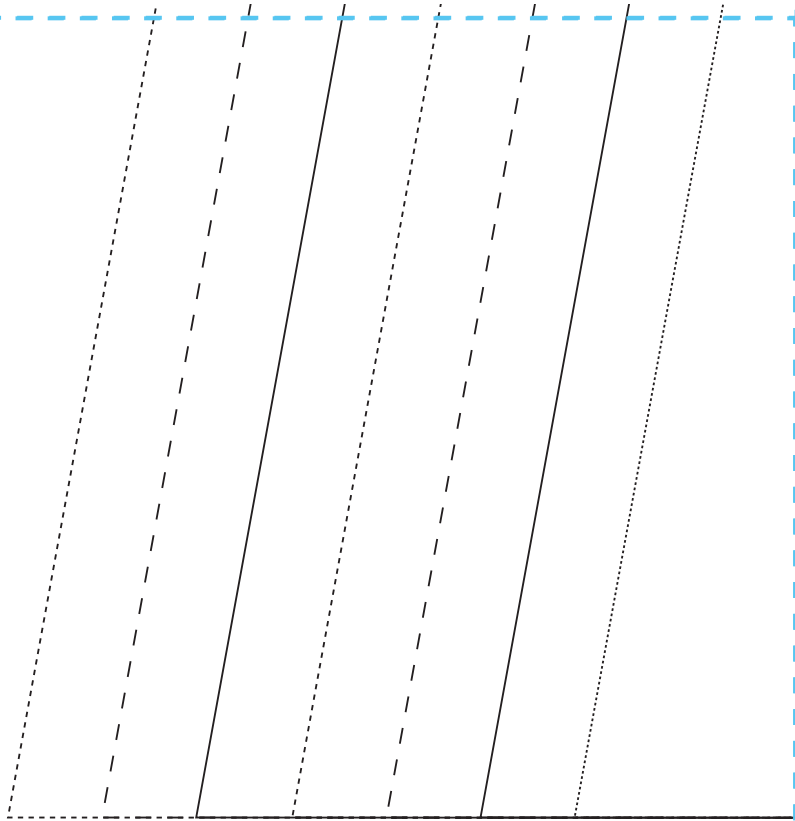
40



41



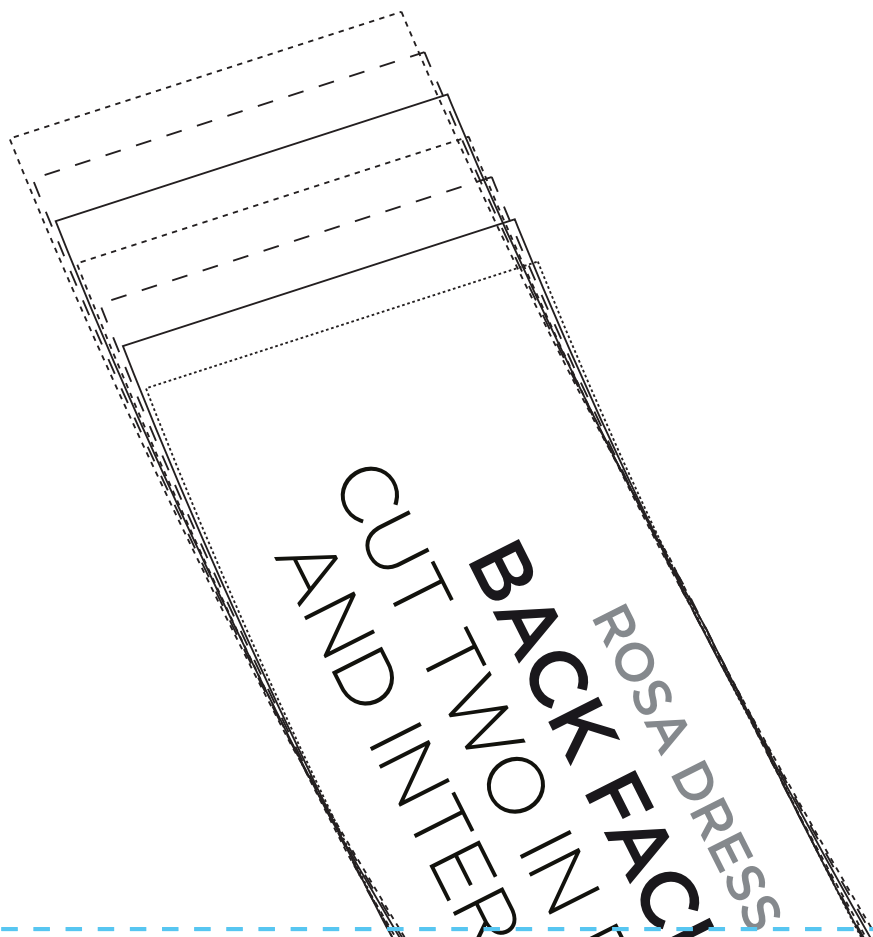
42



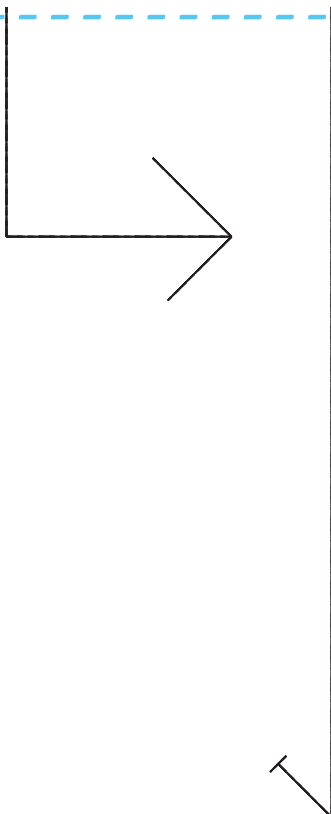
43

TEST SQUARE
10cm

44

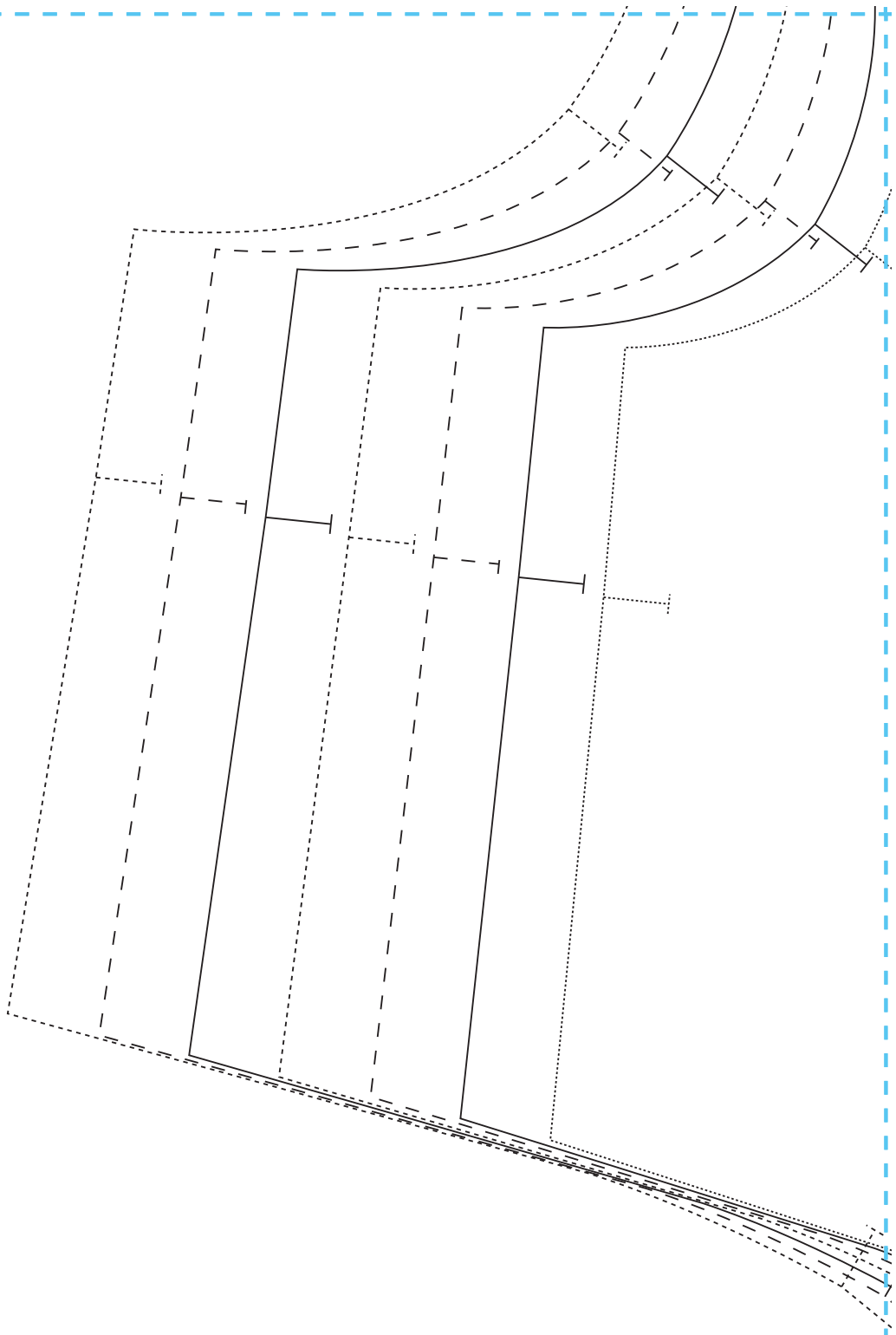


45



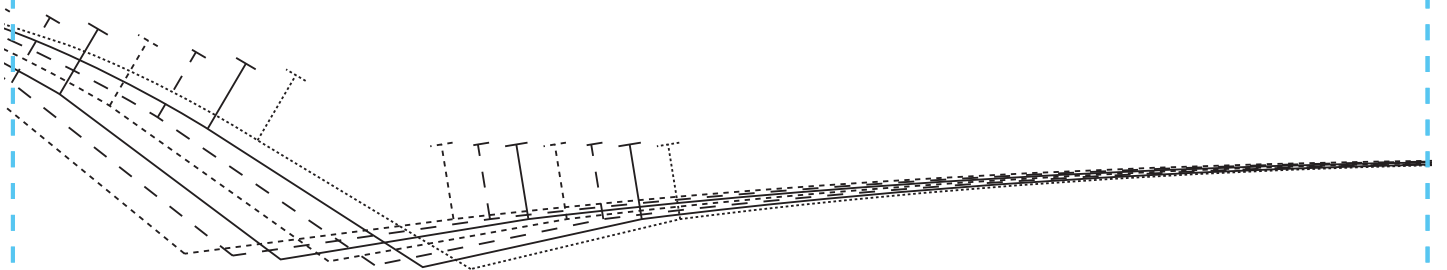
- Size 8
- Size 10
- - - - - Size 12
- Size 14
- Size 16
- - - - - Size 18
- Size 20

46

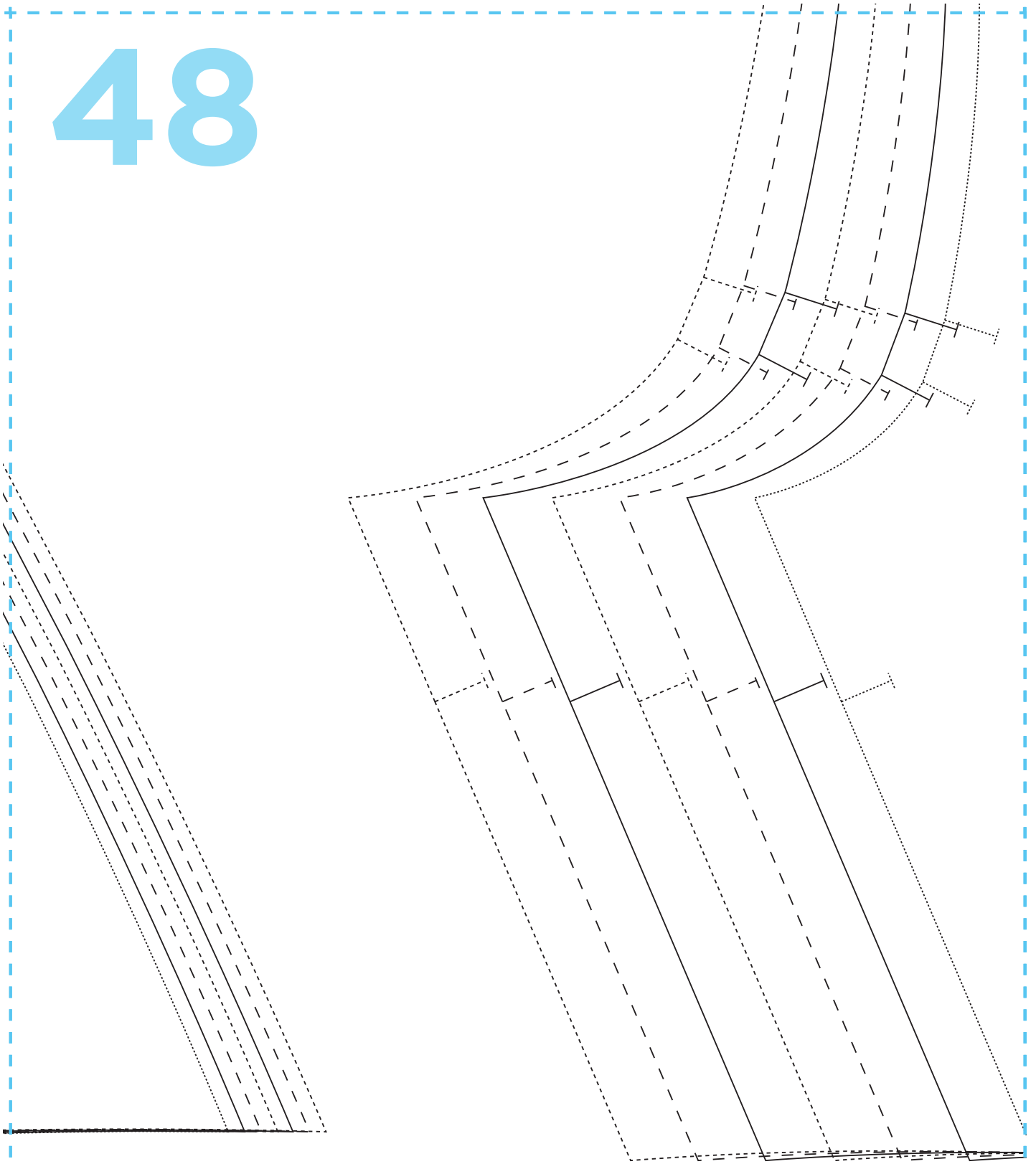


47

ROSA DRESS
FRONT BODICE
CUT TWO IN FABRIC
AND LINING



48

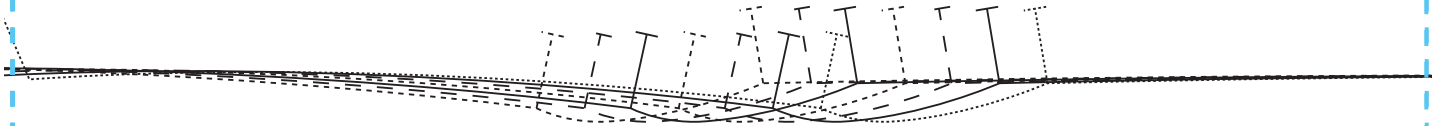
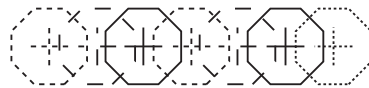
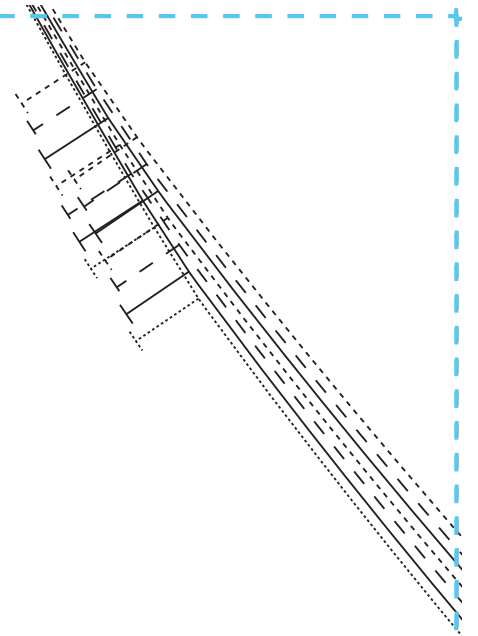


49

ROSA DRESS

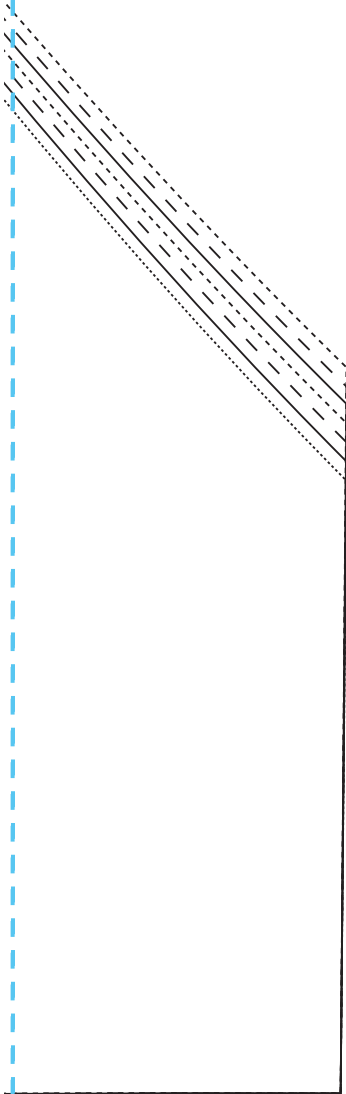
BACK BODICE

CUT TWO IN FABRIC
AND LINING

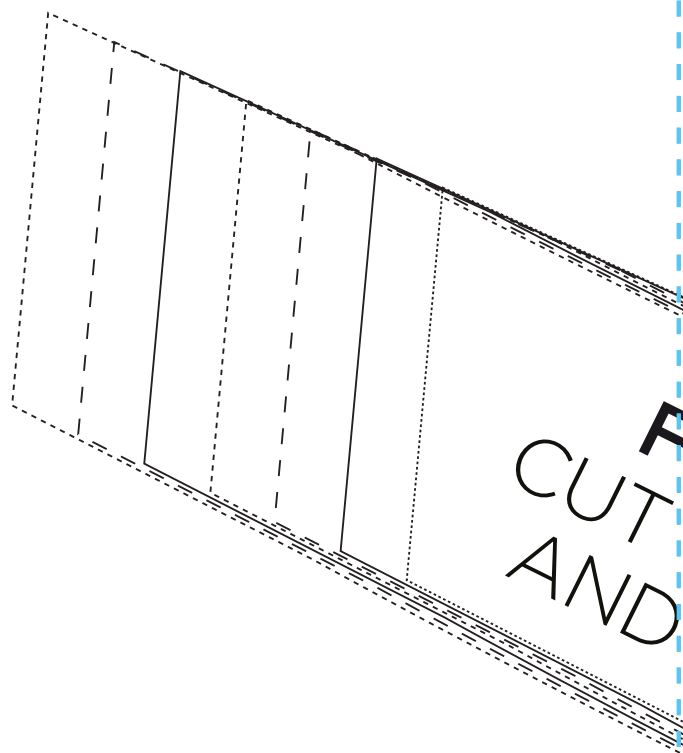


50

ROSA DRESS
**BACK BUTTON
FACING**
CUT ONE



51



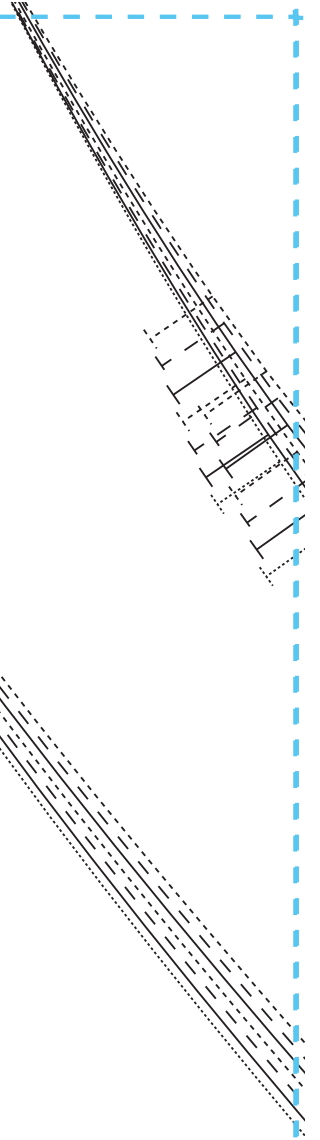
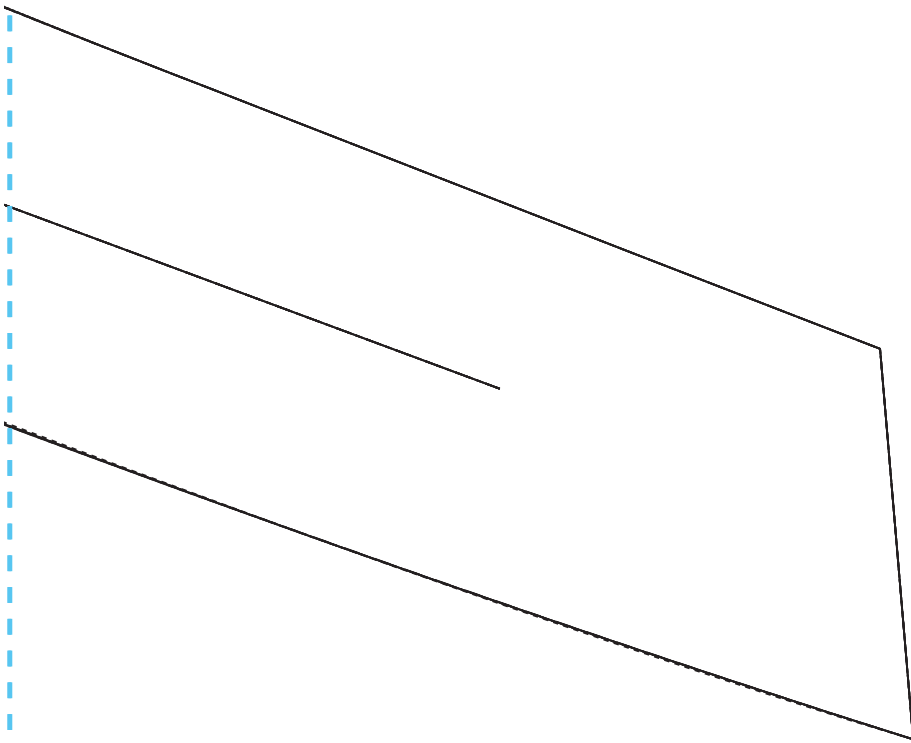
52

ROSA DRESS
FRONT FACING
TWO IN FABRIC
INTERFACING



53

ING
FABRIC
FACING



54

