

Modello

  
di Nuvole  
di Cuori

DNDC001

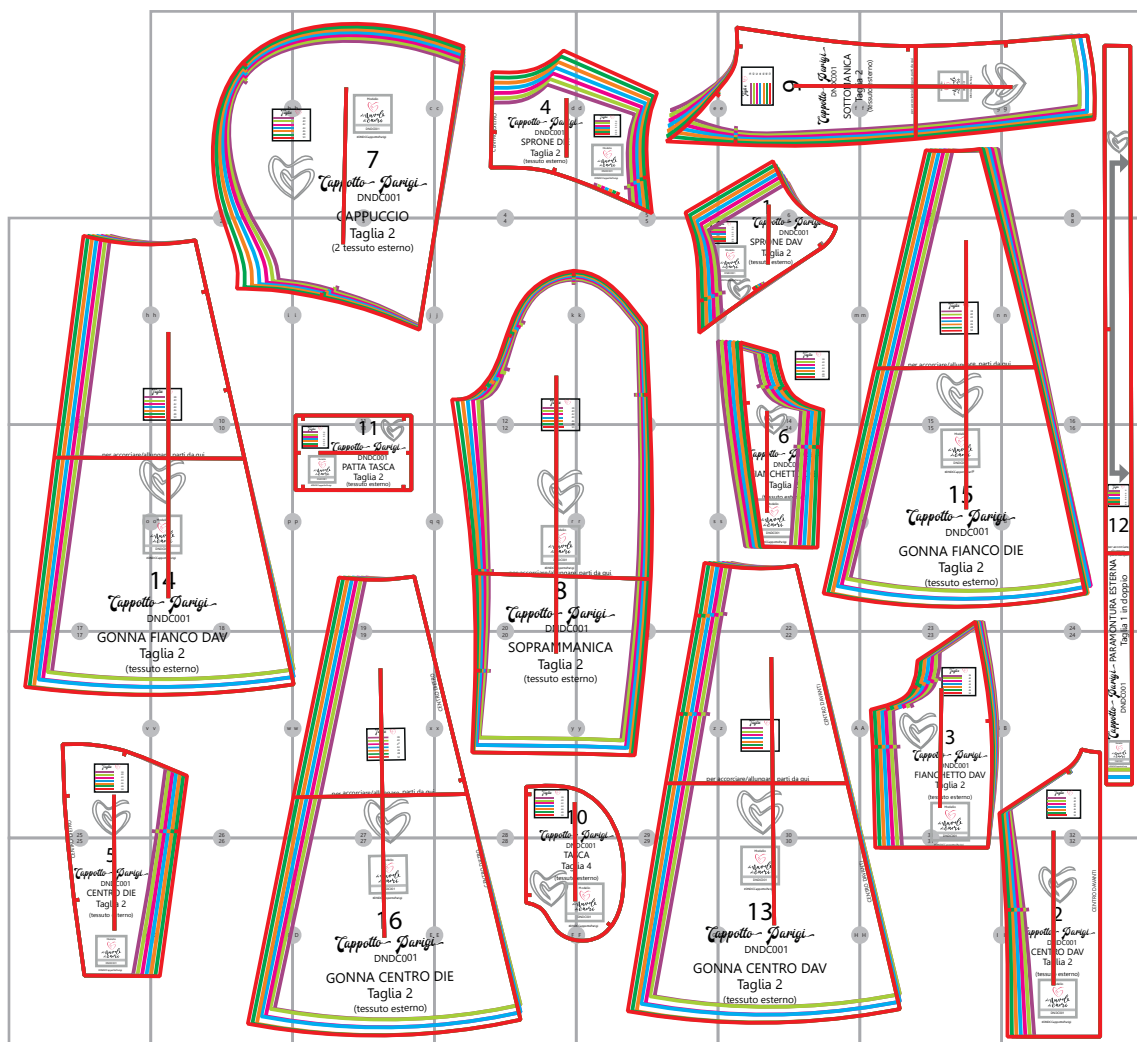
# Cappotto Parigi

Taglie 38 - 50

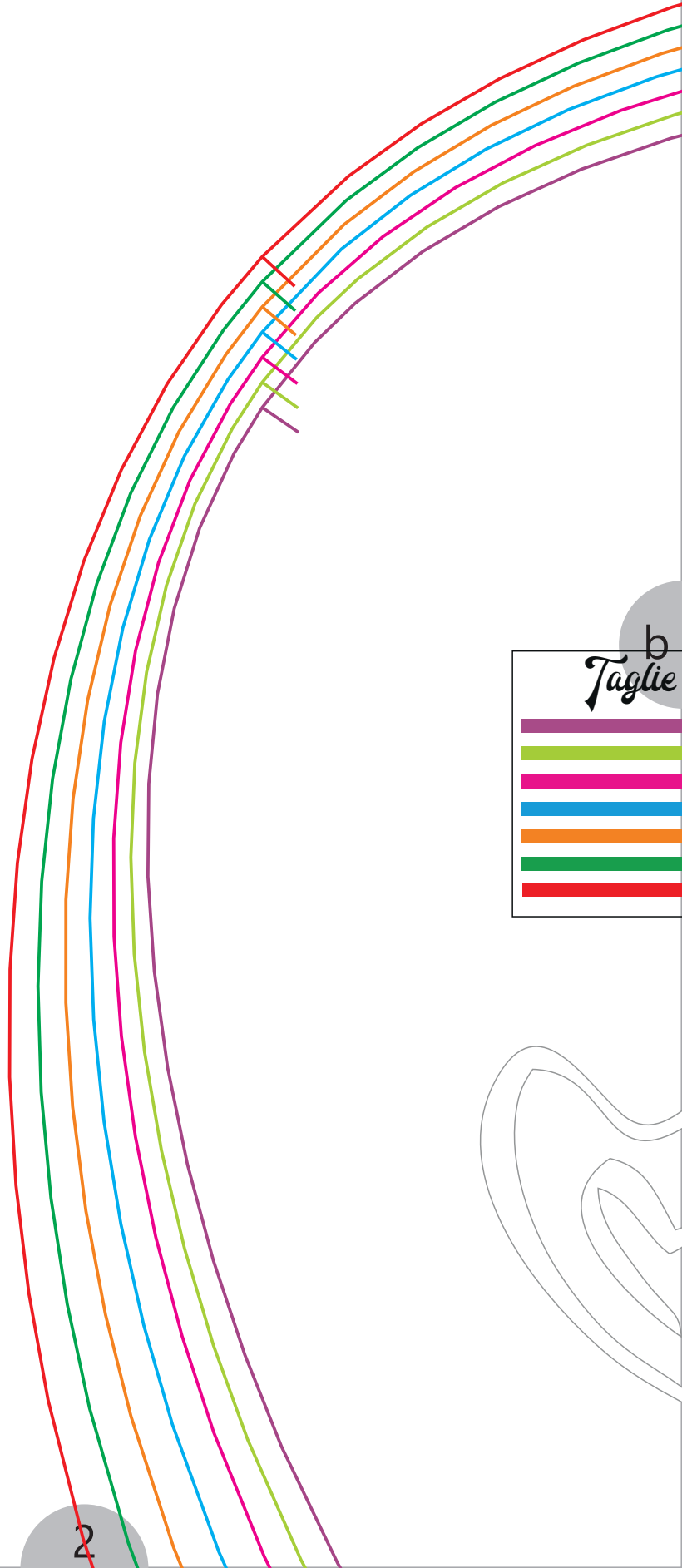
#DNDCcappottoParigi

## Stampa prima questa pagina!

Controlla che il riquadro DiNuvoleDiCuori qui a fianco misuri 5x5 cm. Stampa tutto il modello "misure reali" (NESSUN ridimensionamento pagina)



a



b  
*Taglie*



2





b



- 38
- 40
- 42
- 44
- 46
- 48
- 50

c

Modello



*di nuvole  
di cuori*

---

DNDC001

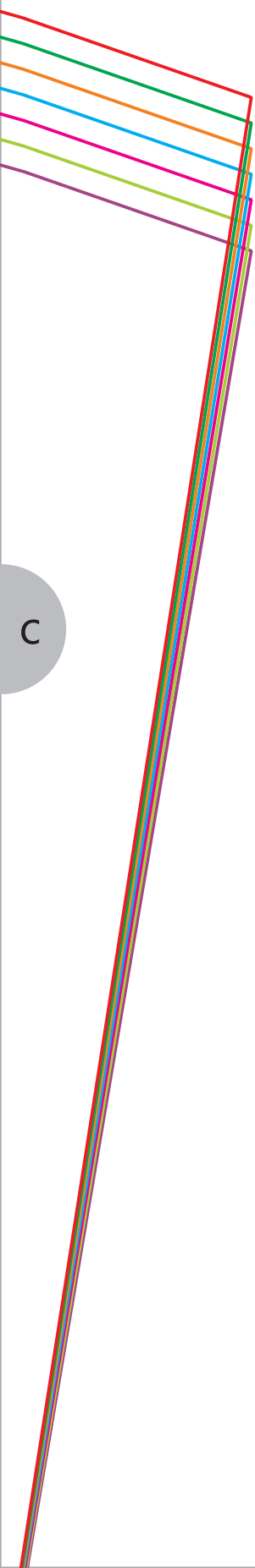
#DNDCCappottoParigi

7

*Cappotto Parigi*

DNDC001

CAPPLICCIO



4

*Cappotto Parigi*

DNDC001

SPRONE DIE

Taglia 2


(tessuto esterno)








CENTRO DIETRO

c

d

d

*Taglie* 

	38
	40
	42
	44
	46
	48
	50

Modello



*di Nuvole  
di Cuori*

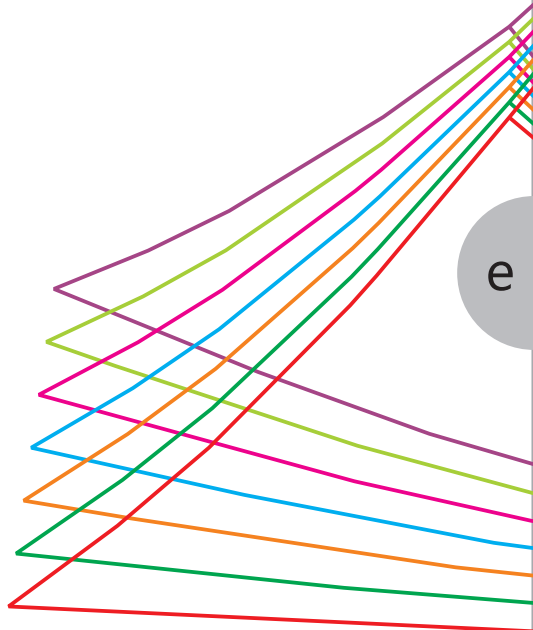
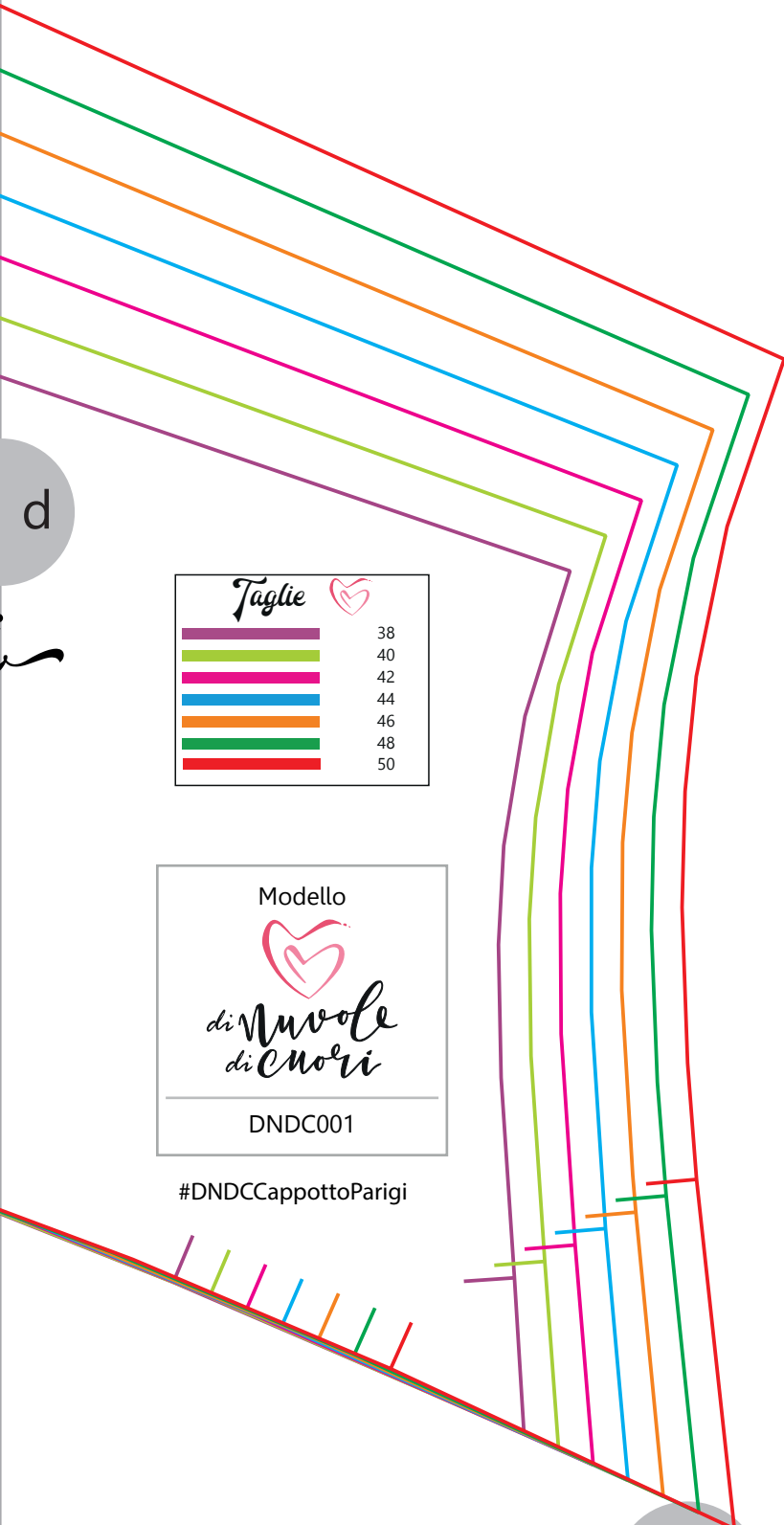
---

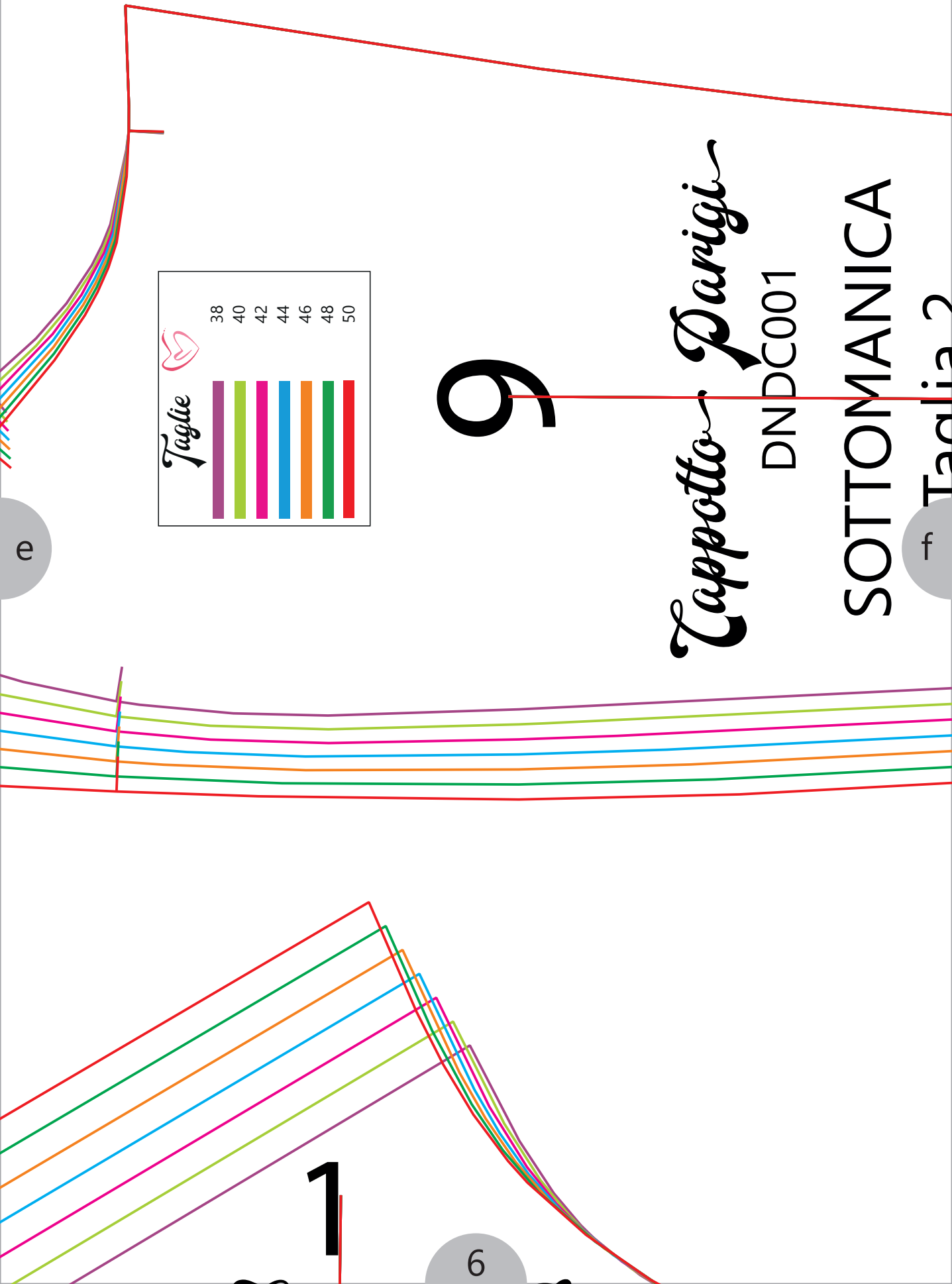
DNDC001

#DNDCCappottoParigi

5

e





Taglie

38
40
42
44
46
48
50

9

*Cappotto Parigi*

DNDC001

SOTTOMANICA

f Taglia 2

1

6

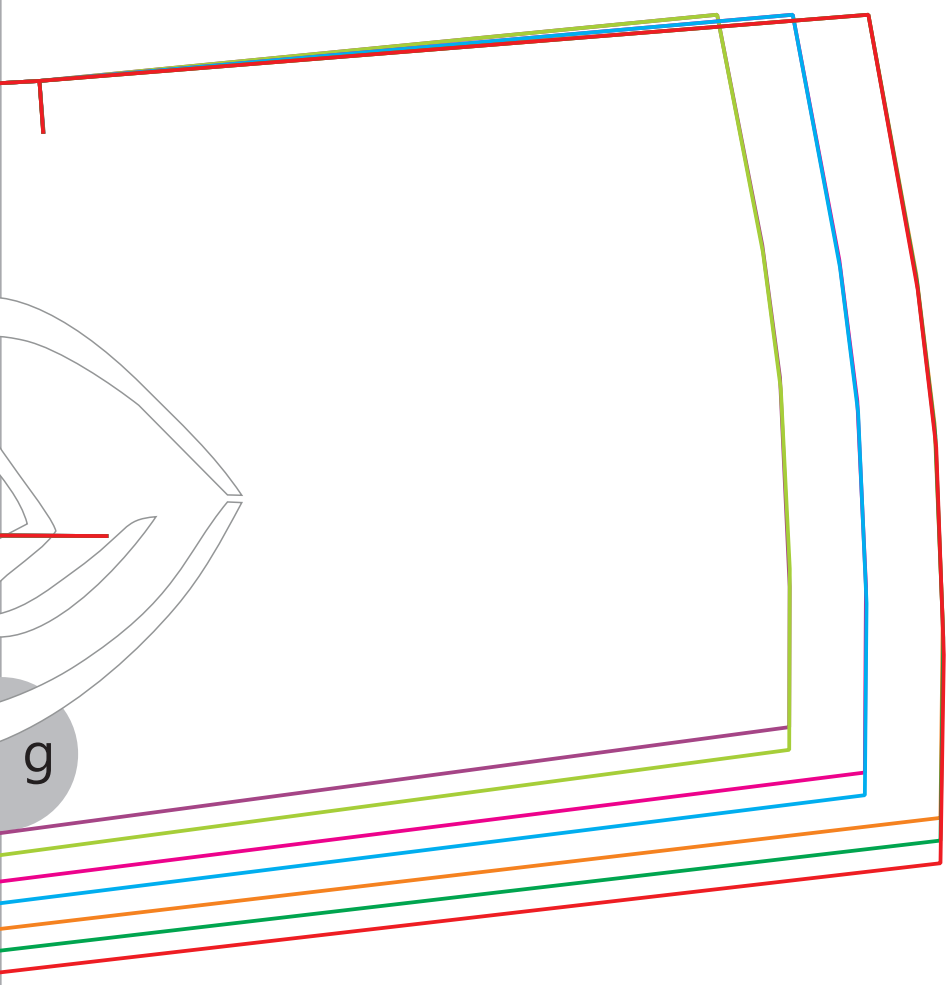
e

f  
raglia 2  
(tessuto esterno)

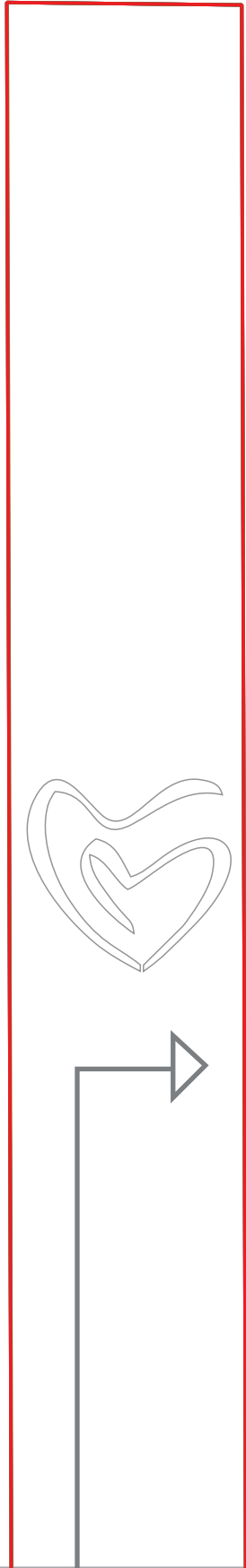
per accorciare/allungare, parti da qui



#DNDCCappottoParigi



9



8

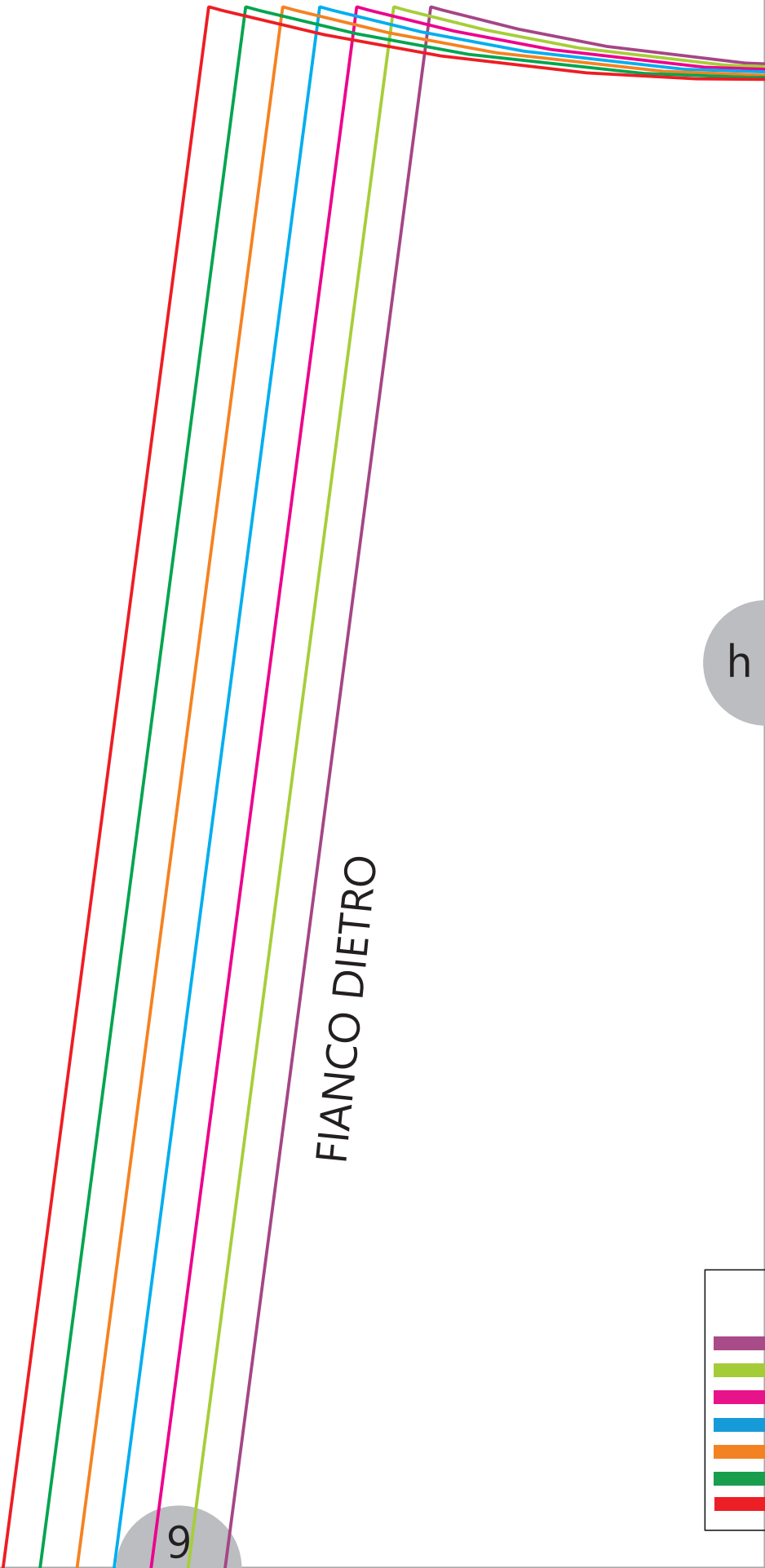


1

h

FIANCO DIETRO

9




2








h

i

FIANCO DAVANTI

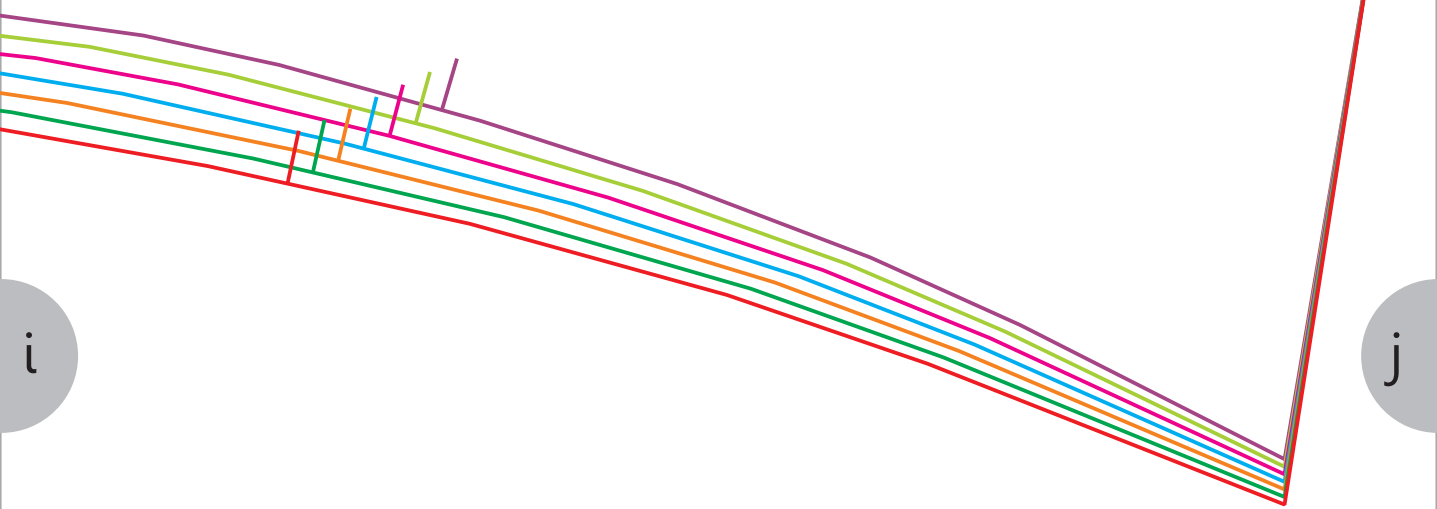
10

Taglie 

	38
	40
	42
	44
	46
	48
	50

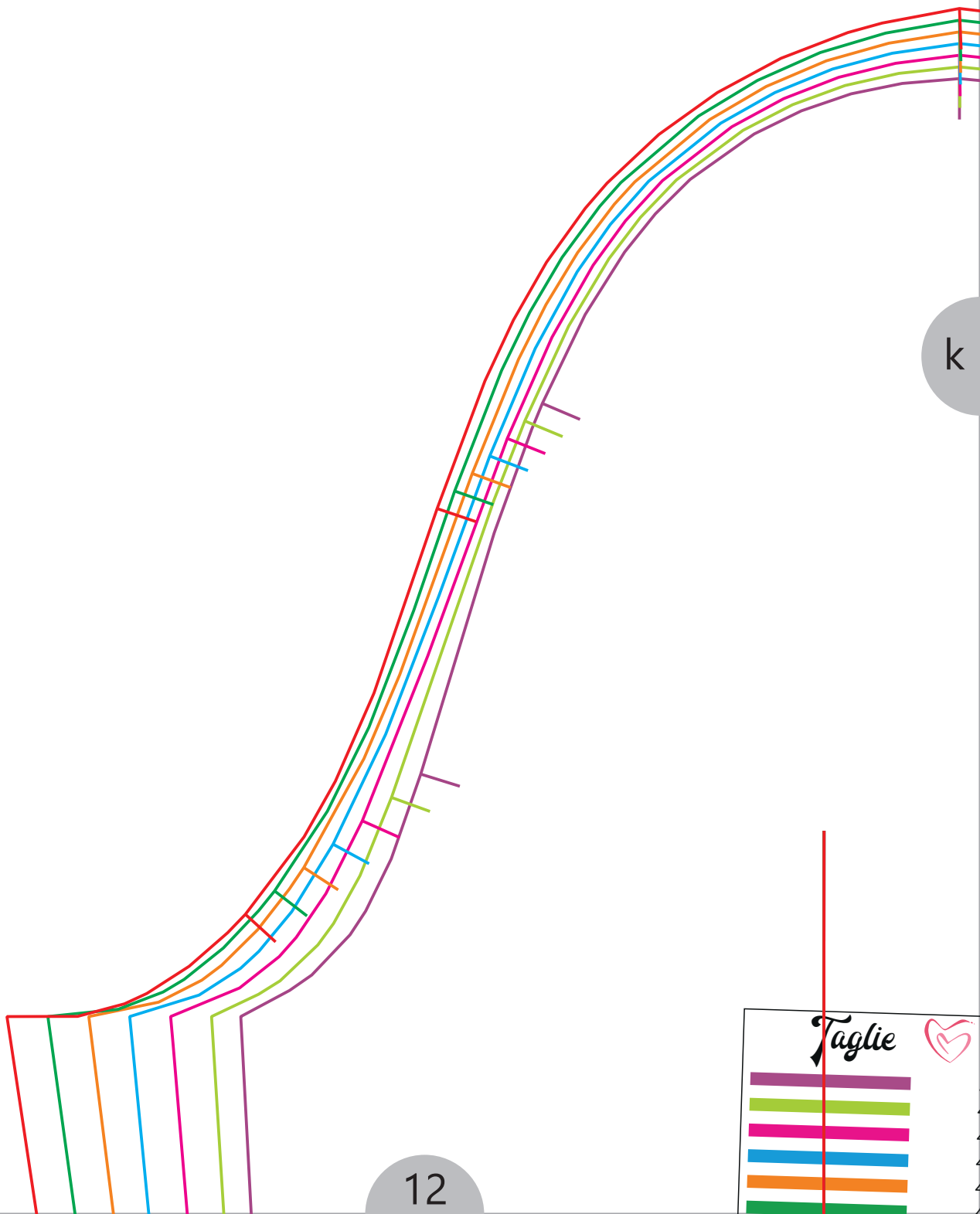
# Taglia 2

(2 tessuto esterno)



j

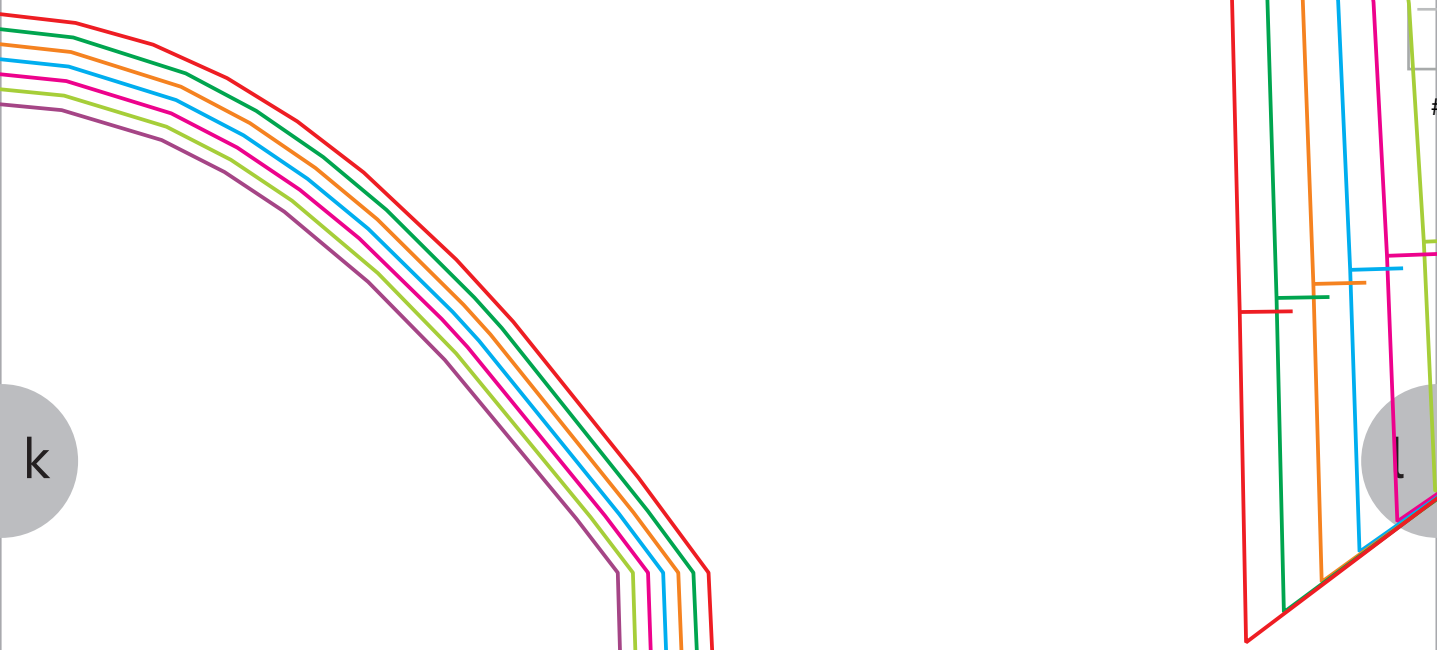
k



Taglie 



5



k



38  
40  
42  
44  
46  
48

13


# Cappotto & Parigi








DNDC001

## SPRONE DAV

### Taglia 2

(tessuto esterno)

Taglie 

	38
	40
	42
	44
	46
	48
	50

Modello 

*di nuvole  
di cuori*

---

DNDC001

#DNDCcappottoParigi











Taglie 

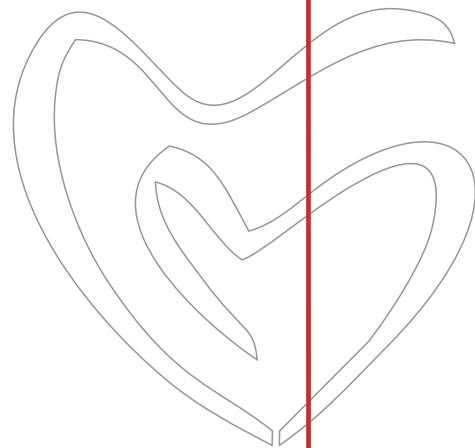
	38
	40
	42
	44
	46
	48
	50



FIANCO DIETRO

<i>Taglie</i> 	
	38
	40
	42
	44
	46
	48
	50

per accorciare/allungare, parti da



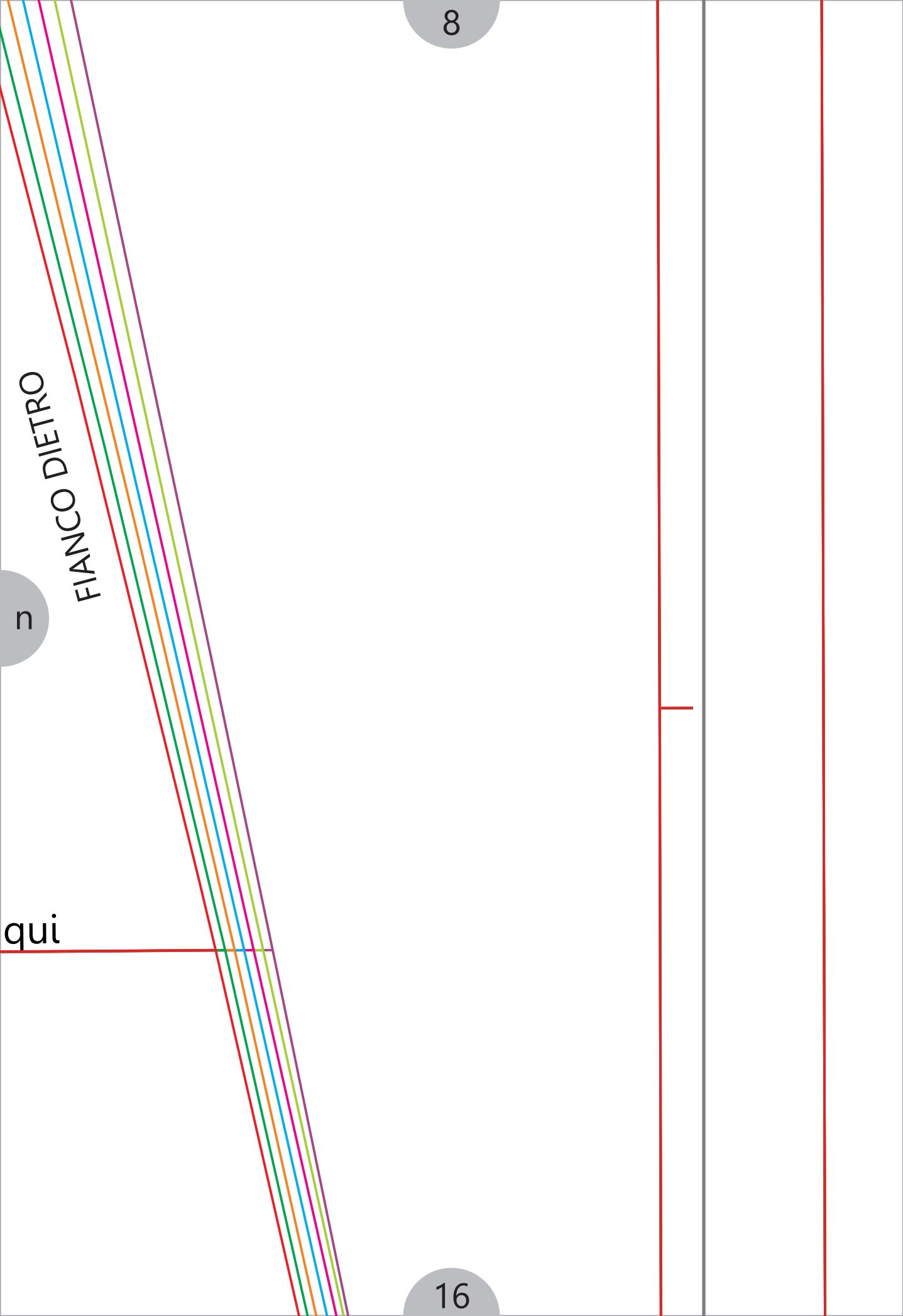
8

FIANCO DIETRO

5

qui

16





per accorciare/allu

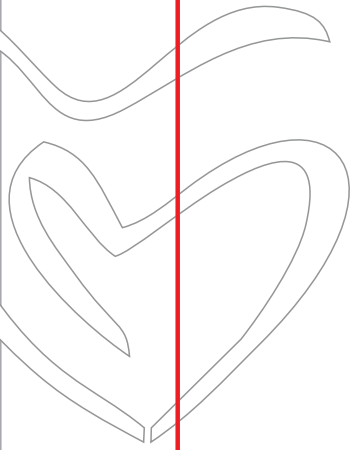
FIANCO DIETRO

*Cappotto*



#D

ungare, parti da qui



Modello



*di nuvole  
di cuori*

---

DNDC001

NDCCappottoParigi


14








*o Parigi*

DNDC001

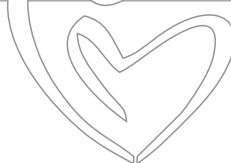
FIANCO DAVANTI

p

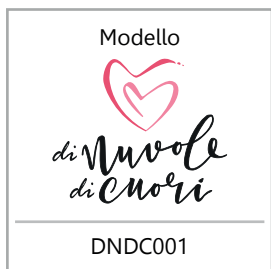
Taglie 

	38
	40
	42
	44
	46
	48
	50

11



# Cappotto Parigi



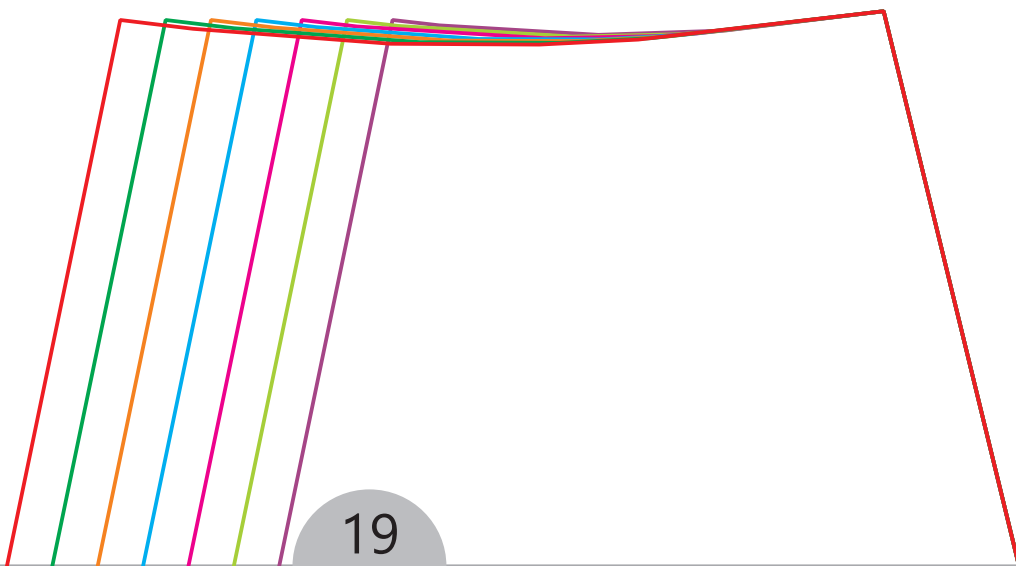
DNDC001  
PATTA TASCA

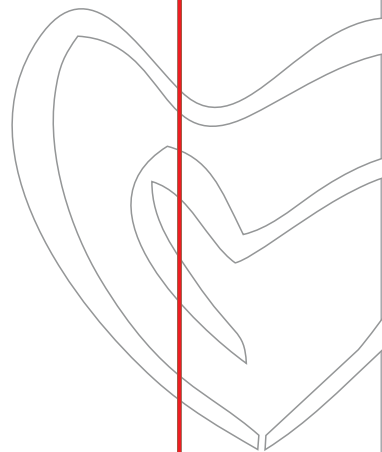
Taglia 2  
(tessuto esterno)

#DNDCcappottoParigi

p

q





q

r

Modello



di nuvole  
di cuori

DNDC001

#DNDCCappottoParigi

per accorciare/allungare,

8

Cappotto P

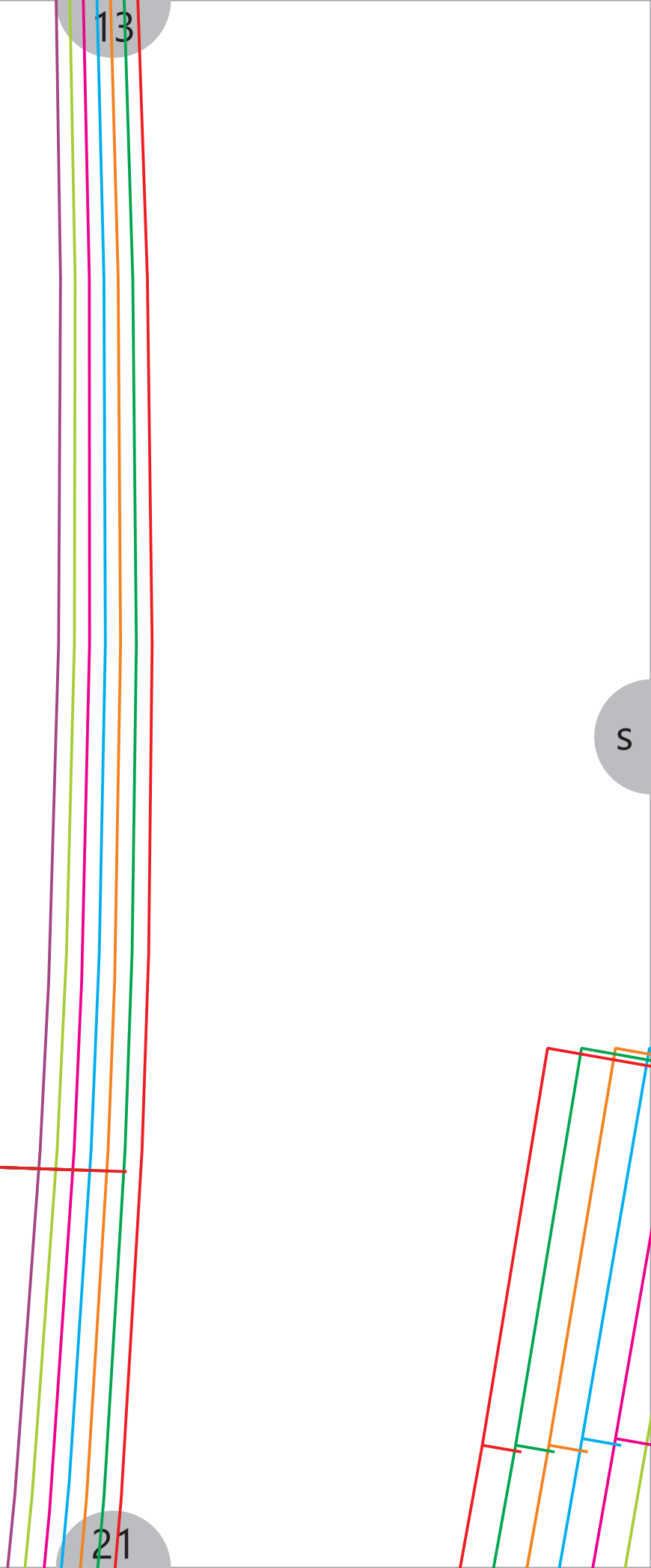


r

s

parti da qui

Parigi



14  
6

# Cappotto Parigi

DNDC001

FIANCHETTO DIE

Taglia 2

(tessuto esterno)

Modello



di nuvole  
di cuori

DNDC001

#DNDCcappottoParigi

Modello

*di nuvole  
di cuori*

DNDC001

#DNDCcappottoParigi

FIANCO DIETRO

15

*Cappotto Parigi*

DNDC001

GONNA FIANCO

Taglia 2

(tessuto esterno)

u









DIE

FIANCO DIETRO

16

24



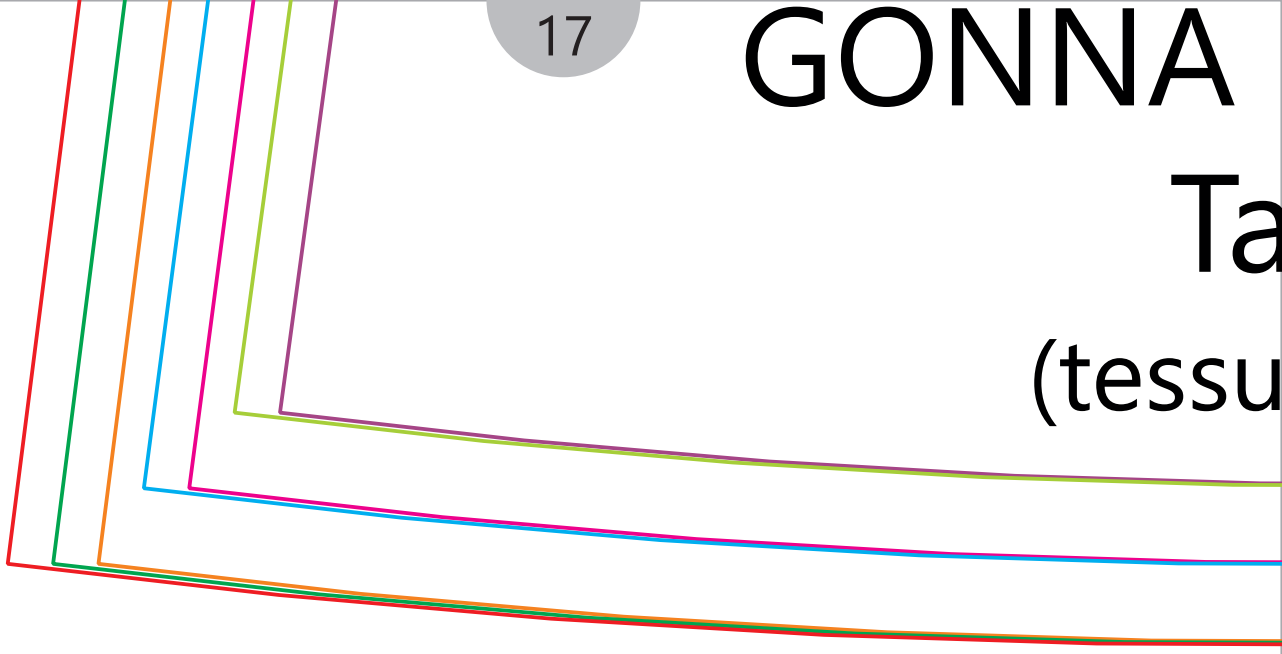
Taglie 	
	38
	40
	42
	44
	46
	48
	50


12








per accorciare/  
allungare,  
parti da qui

CONTURA ESTERNA  
lia 1 in doppio

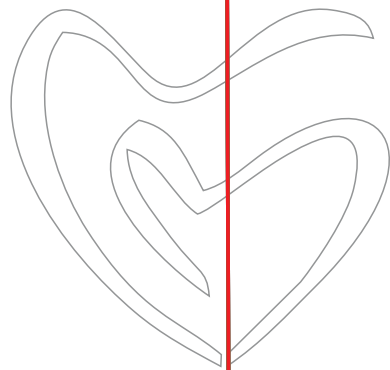




*Taglie* 

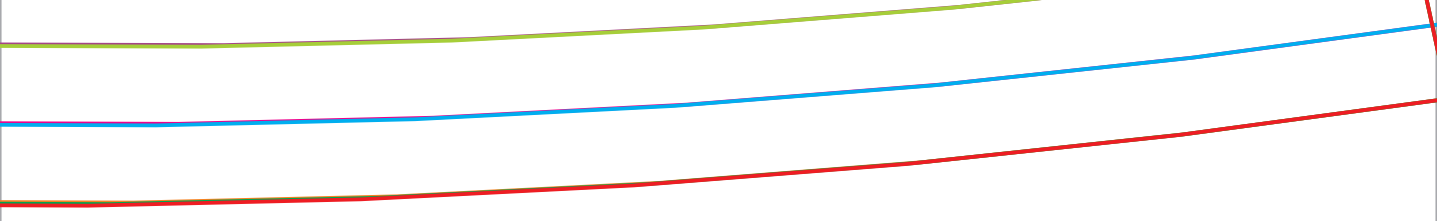
	38
	40
	42
	44
	46
	48
	50

DIETRO



## glia 2

(to esterno)











v

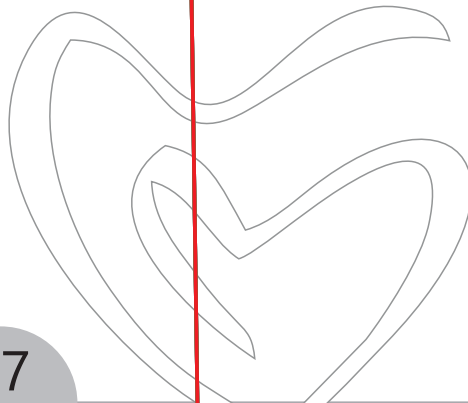
w



FIANCO DIETRO

Taglie 	
	38
	40
	42
	44
	46
	48
	50

per accorciare/allungare, parti da qui



W

X

DIETRO

20

# SOPRAMMA

## Taglia 2 (tessuto esterno)

CENTRO DENTRO

x

y

Taglie



	38
	40
	42
	44
	46
	48
	50

1

28

Capotto

ANICA

no)

y

0

Darici

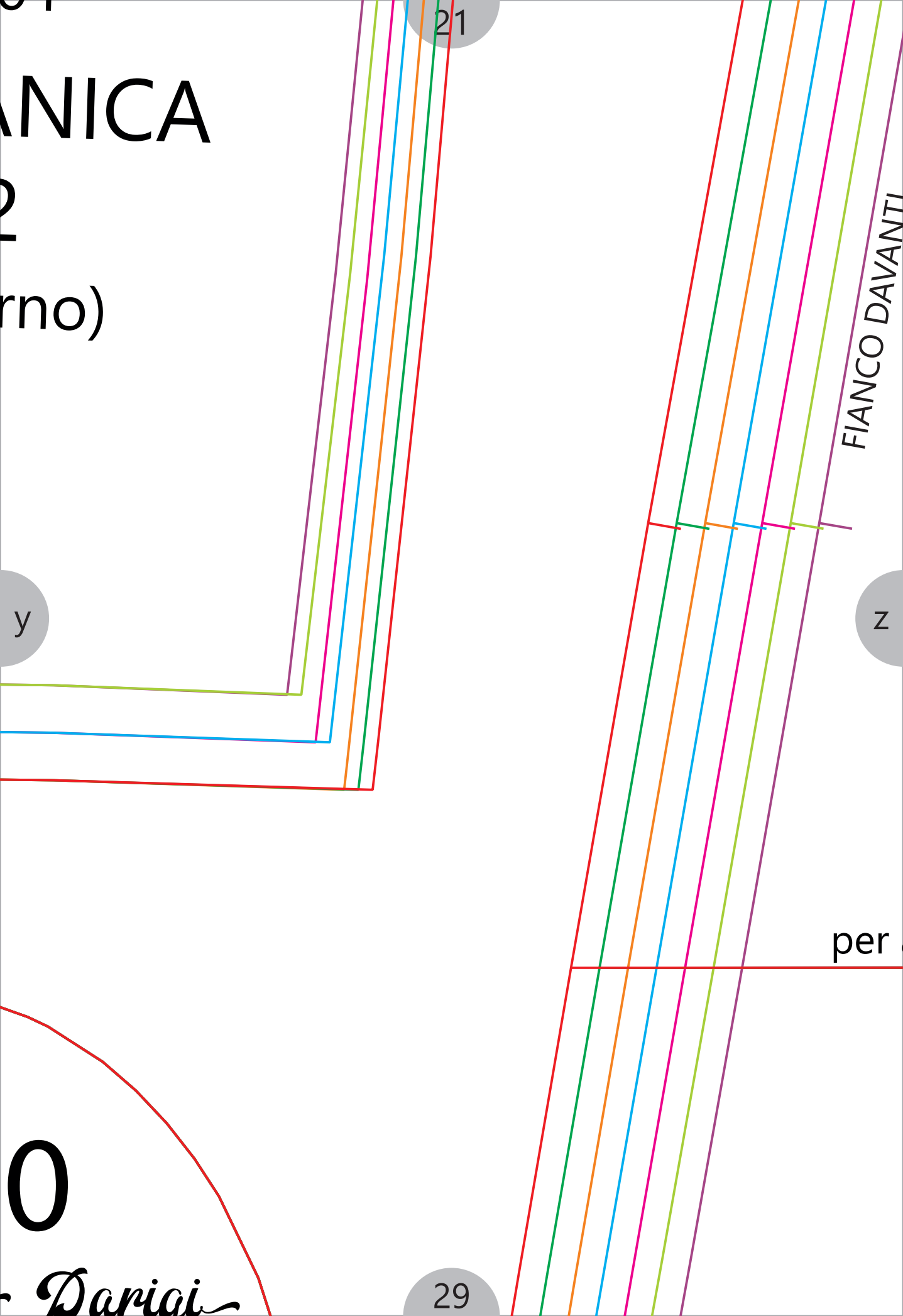
21

FIANCO DAVANTI

z

per








29



22

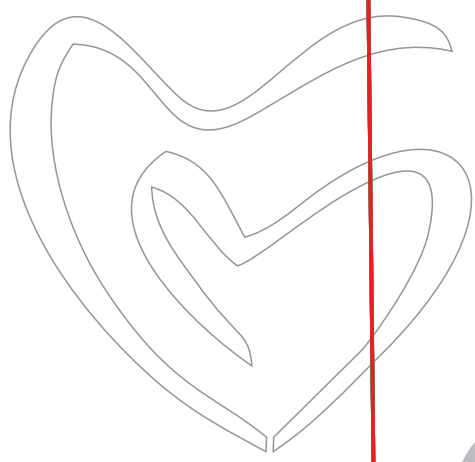
Z

A

Taglie 	
	38
	40
	42
	44
	46
	48
	50

CENTRO DAVANTI

accorciare/allungare, parti da qui



30

Taglie 

	38
	40
	42
	44
	46
	48
	50



3

*Cappotto Parigi*

DNDC001

FIANCHETTO DAV

Taglia 2

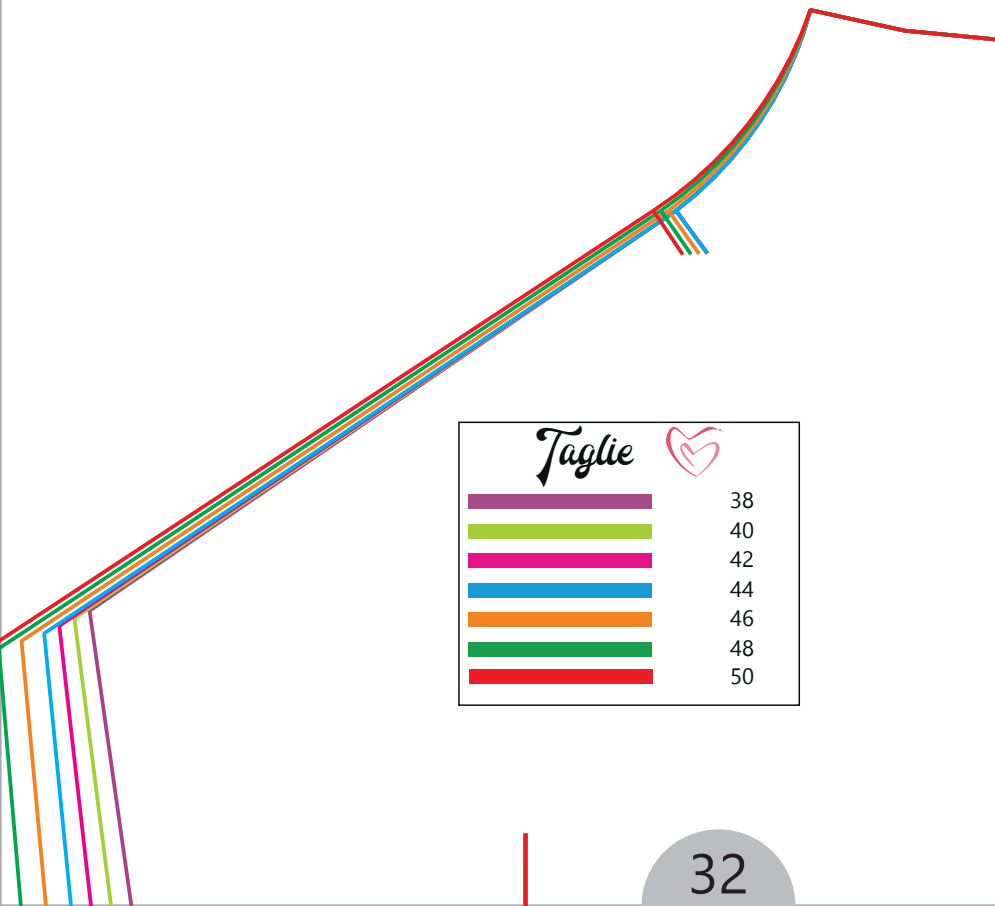
(tessuto esterno)








Modello



*di nuvole  
di cuori*

B



Taglie	
	38
	40
	42
	44
	46
	48
	50

# Cappotto Parigi PARAMO

## DNDC001

### Tagli

Modello



DNDC001

#DNDCcappottoParigi



CENTRO

25

5

*Cappotto Parigi*

DNDC001

CENTRO DIE

Taglia 2

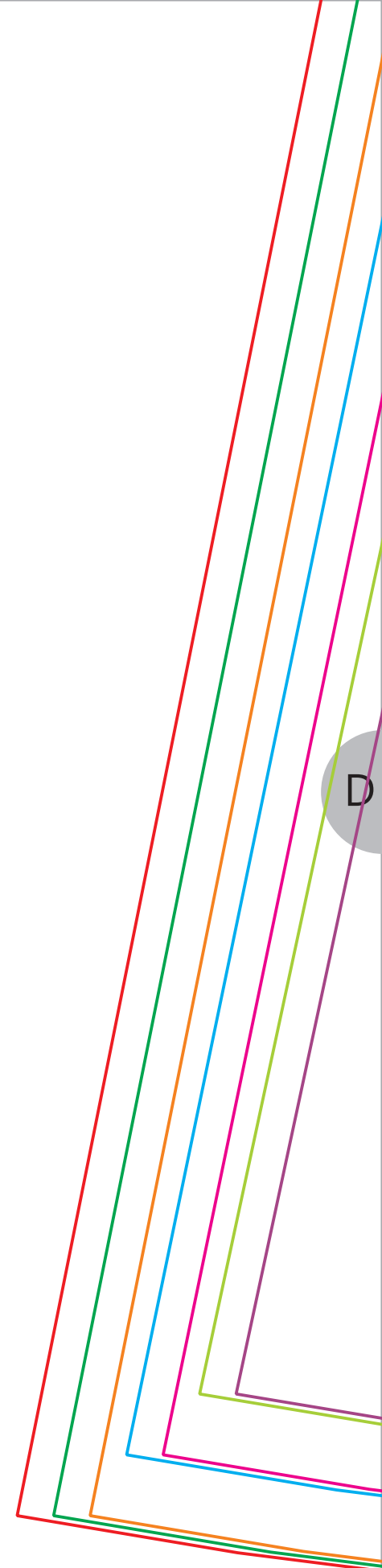
(tessuto esterno)

Modello



DNDC001

#DNDCCappottoParigi



Modello

*di Nuvole  
di Cuori*

DNDC001

#DNDCcappottoParigi

FIANCO DIETRO

16

*Cappotto Parigi*

DNDC001

GONNA CENTRO

Taglia 2

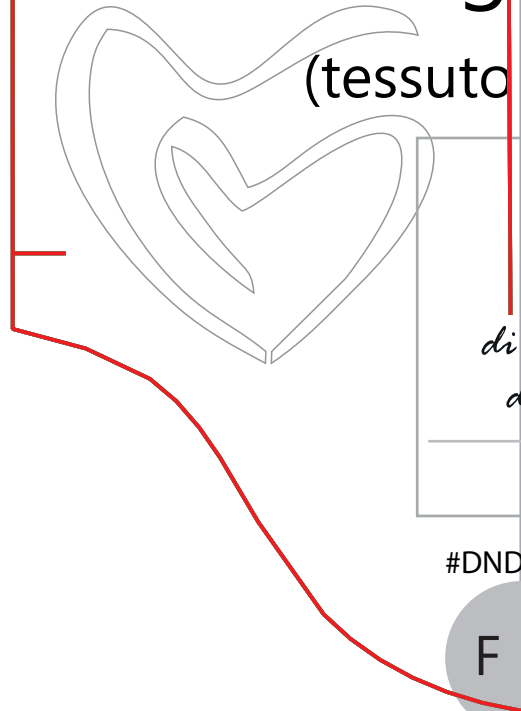
(tessuto esterno)

CENTRO DIETRO

DN  
TAS

Tagli

(tessuto



E

DIE

DC001

SCA

lia 4

esterno)

Modello



*nuvole  
di cuori*

DNDC001

CCappottoParigi

F

29

FIANCO DAVANTI



GON



#DNDCCappottoParigi

# 13

*Cappotto Parigi*

DNDC001

MINNA CENTRO DAV

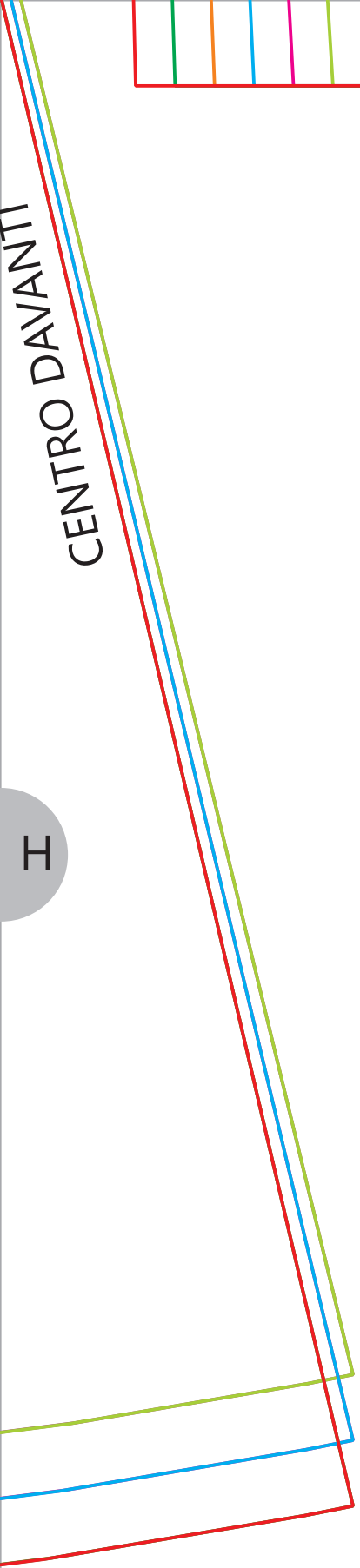
## Taglia 2

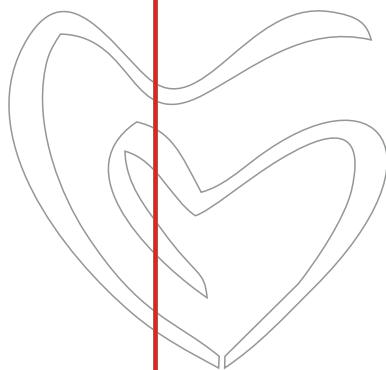
(tessuto esterno)

CENTRO DAVANTI

I

I





2

*Cappotto Parigi*

DNDC001

CENTRO DAV

Taglia 2

(tessuto esterno)

Modello

*di Nuvole  
di Cuori*

DNDC001

#DNDCcappottoParigi

CENTRO DAVANTI