

Брюки на кулиске

# Walk ON BY

Sew this pair of versatile pants  
to complete any outfit

Project **JULIA CLARIDGE**  
[www.bobbinsnbuttons.co.uk](http://www.bobbinsnbuttons.co.uk)



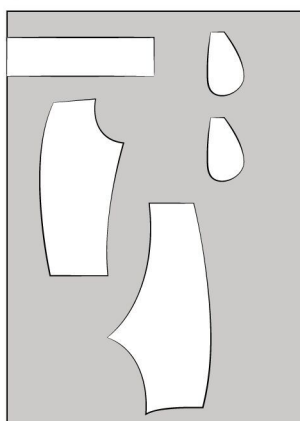
Bobbins & Buttons is a hub of sewing based in the East Midlands, offering own-brand patterns, fabric and workshops. Julia designs a range of sewing patterns for all the family. Styles are versatile, adaptable and easy to make. A collection of fabric that suits the sewing patterns is available. Julia offers sewing classes that are flexible to your skill level and geared towards what you would like to learn.

For more information,  
visit Julia's website  
[www.bobbinsnbuttons.co.uk](http://www.bobbinsnbuttons.co.uk)

[https://vk.com/sew\\_room](https://vk.com/sew_room)



### LAYPLAN:



### MATERIALS & TOOLS:

- linen 1.70m x 1.40m (sizes 8-16) x 1.90m (sizes 18-22)
- 5cm elastic (see table for quantities)
- templates downloaded from [www.craftworld.com/cms/love-sewing](http://www.craftworld.com/cms/love-sewing)

### NOTES:

1.5cm seam allowance except when stated otherwise.

### CUTTING:

From main fabric, cut:

- pair of fronts
- pair of backs
- 2 x pairs of pocket bags
- waistband

### HOW TO MAKE:

**1** With RST, notches and raw edges matched, pin one pocket piece to each side front. Stitch using a 1cm seam allowance. Repeat with the remaining pocket pieces on the back pieces. Neaten the raw edges of the side seams, and press the pocket to the outside of the trouser leg. (See Pic A.)

**2** With RST, pin and stitch the front legs together at the rise seam. Neaten raw edges. Repeat with the back leg pieces. (See Pic B.)



**3** With RST, pin the front and back together at the side seam with the pocket bag pushed to the outside. Pin from the upper edge to the upper notch making sure the seams are aligned. Pin from the lower notch to the hem. Stitch at 1.5cm seam allowance, backstitching at each notch to ensure

the pocket opening is strong. Repeat on the other side. (See Pic C.)

**4** Stitch the pocket bag together and neaten raw edges on each side.

**5** With RST and raw edges matched, pin the front to back at the inside leg seam. Stitch and neaten raw edges. (See Pic D.)

### GARMENT MEASUREMENTS (IN CMS)

### таблица размеров готового изделия

	8	10	12	14	16	18	20	22
Waist fully stretched	87cm	92cm	97cm	102cm	107cm	112cm	117cm	122cm
hips	106cm	111cm	116cm	121cm	126cm	131cm	136cm	141cm
length from waist to hem	85cm	85cm	85cm	85cm	85cm	85cm	85cm	85cm

### ELASTIC LENGTHS (IN CMS) длина резинки в сантиметрах

	8	10	12	14	16	18	20	22
Elastic cut length	62cm	67cm	72cm	77cm	82cm	87cm	92cm	97cm

[https://vk.com/sew\\_room](https://vk.com/sew_room)

**E****F**

**6** Fold the waistband piece in half so long edges and wrong sides are together. Press. With RST, pin and stitch the short edges together. Press the seam open.

**7** With RST, raw edges and seam matched to the centre back seam, pin the waistband to the waist edge. Stitch. Press the seam upwards into the waistband. (See Pic E.)

**8** Fold the waistband down to the inside along the pressed line. Neaten the inner raw edge. Pin the waistband, stitch in the ditch on the right side, leaving a gap to insert the elastic.

**9** Cut the elastic according to the size chart, adjusting if necessary to feel comfortable. Attach a safety pin at one end and thread into the waist channel. Check the elastic is not twisted, lay one end over the other and stitch together. Allow the elastic to recede into the channel and stitch the gap closed. (See Pic F.)

**10** Neaten the raw hem edges. Turn and press a 4cm single turned hem, stitch at the inner edge to complete.

## Shopping list

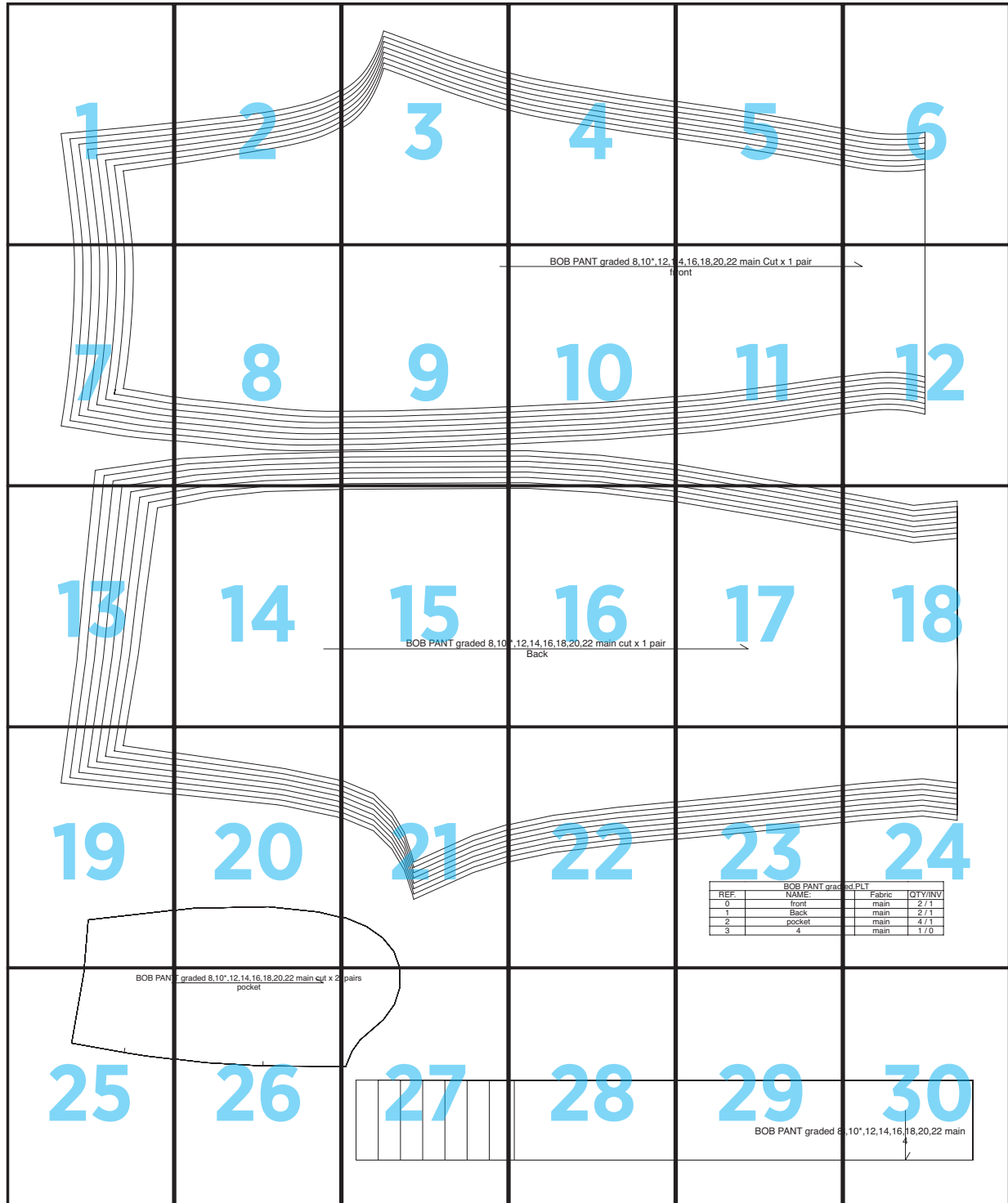
Denim blue denim,  
£14 per metre  
[www.bobbinsnbuttons.co.uk](http://www.bobbinsnbuttons.co.uk)

*Top tip!*

When stitching in the ditch, try using a walking foot to ensure all layers move evenly

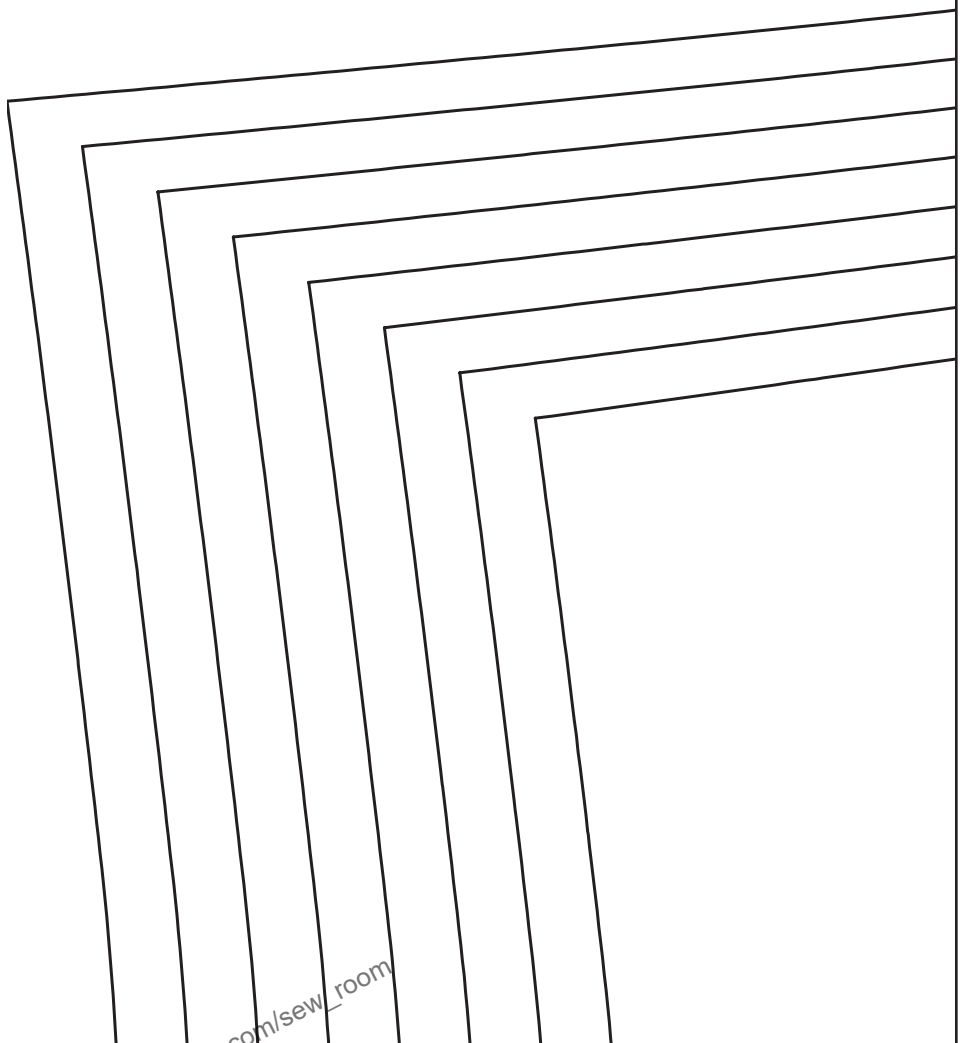


# Bob Pants Pattern

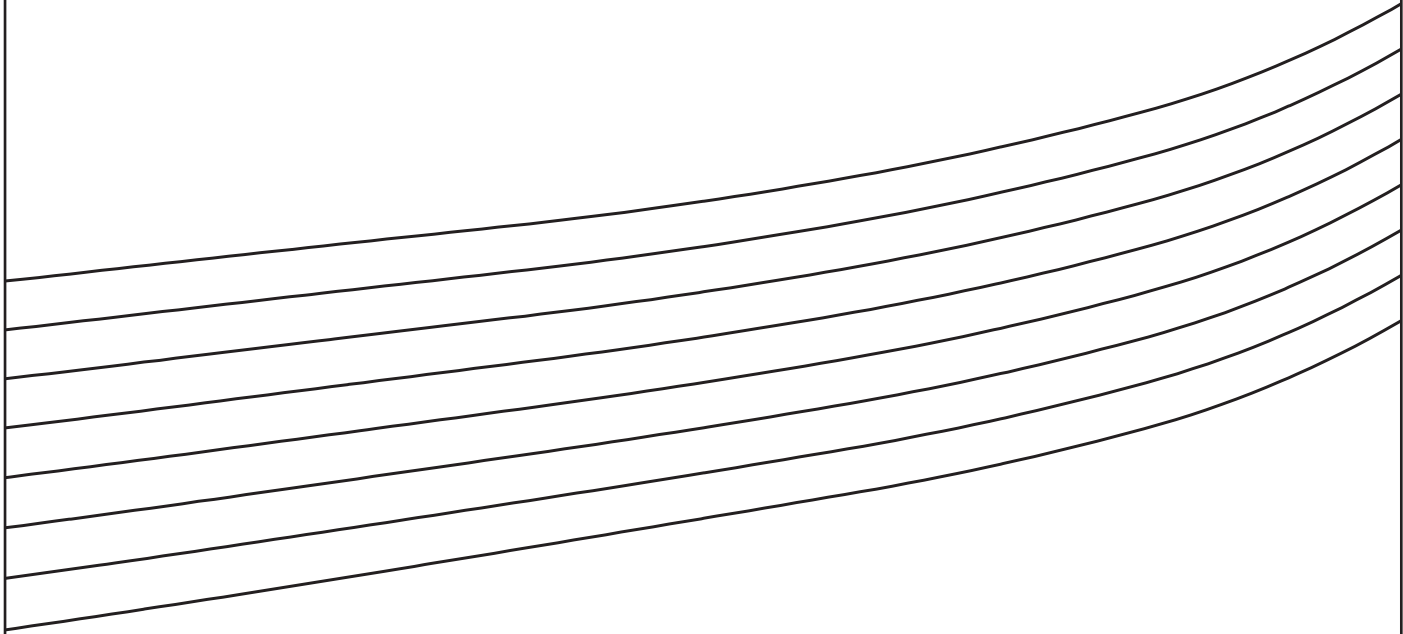


BOB PANT graded PLT			
REF	NAME	Fabric	QTY/INV
0	front	main	2 / 1
1	Back	main	2 / 1
2	pocket	main	4 / 1
3	4	main	1 / 0

1



2



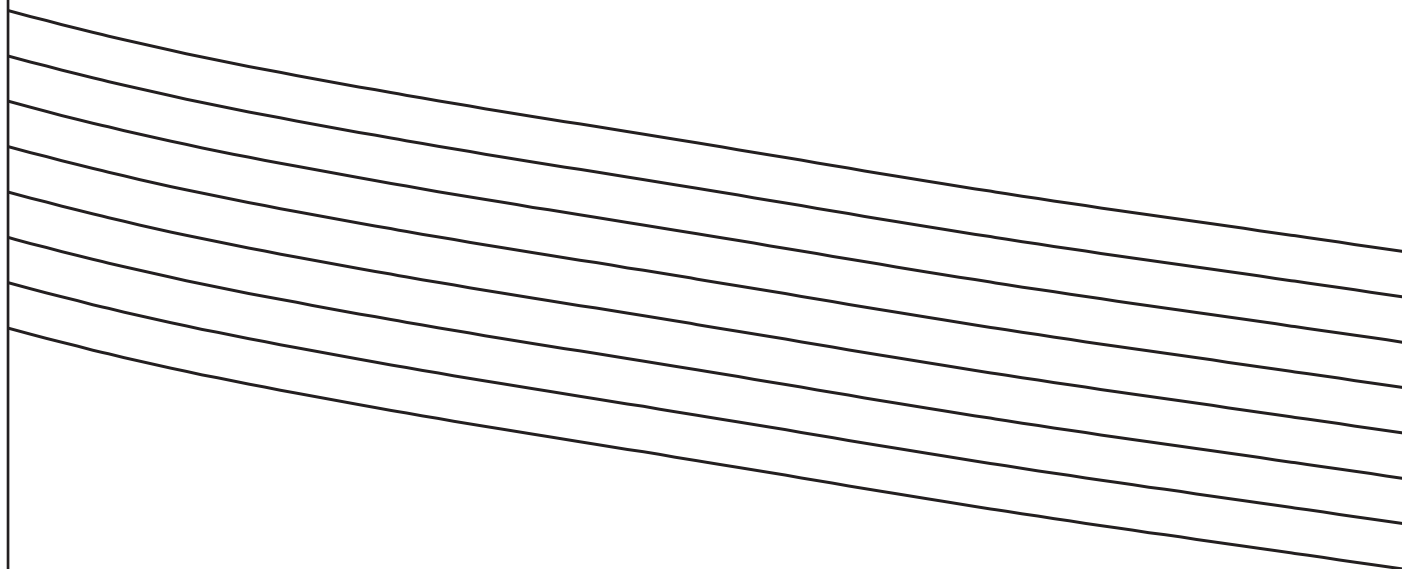
3

22

8

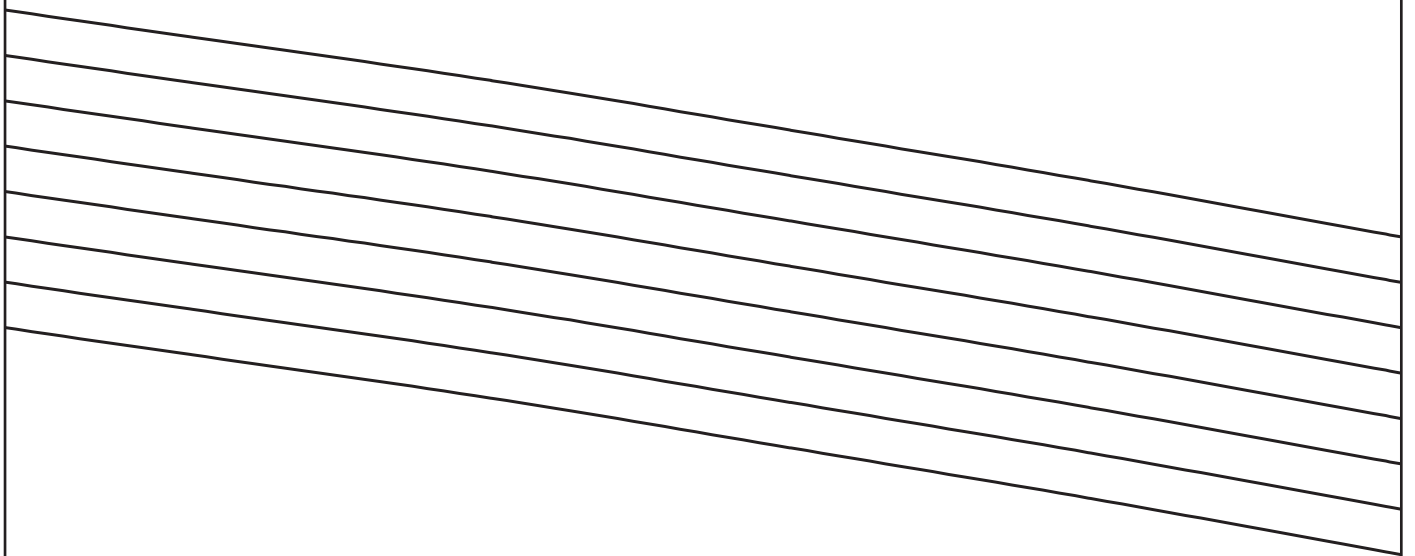


4

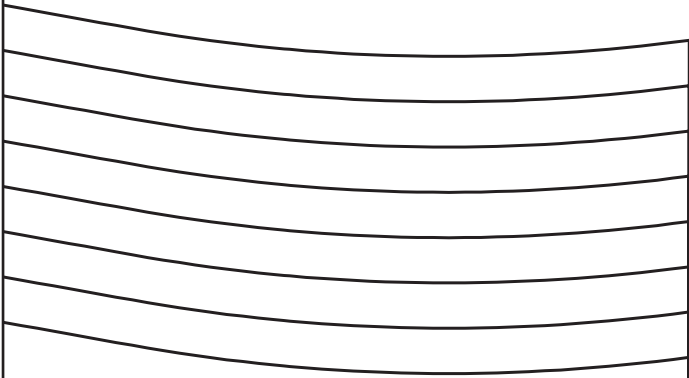




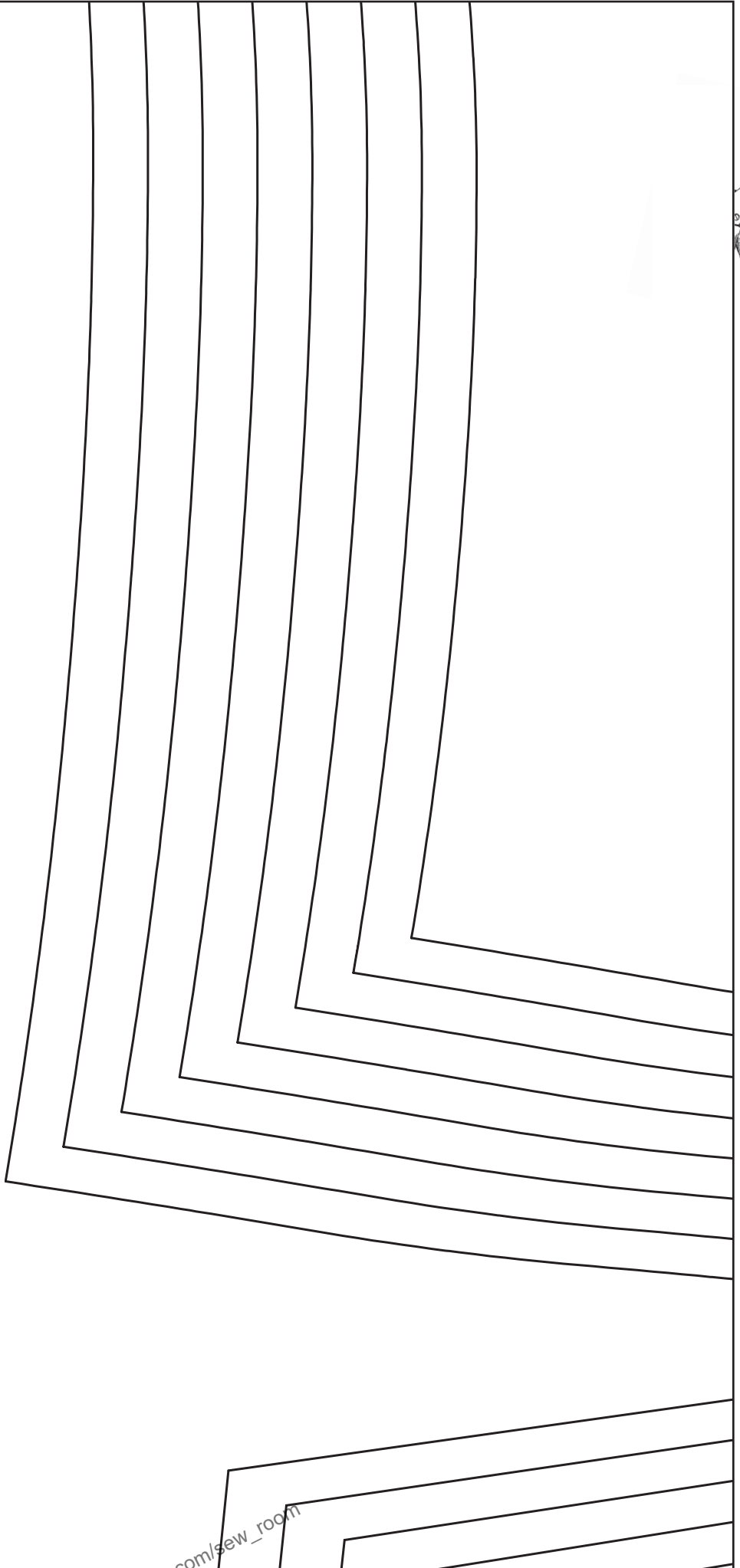
5

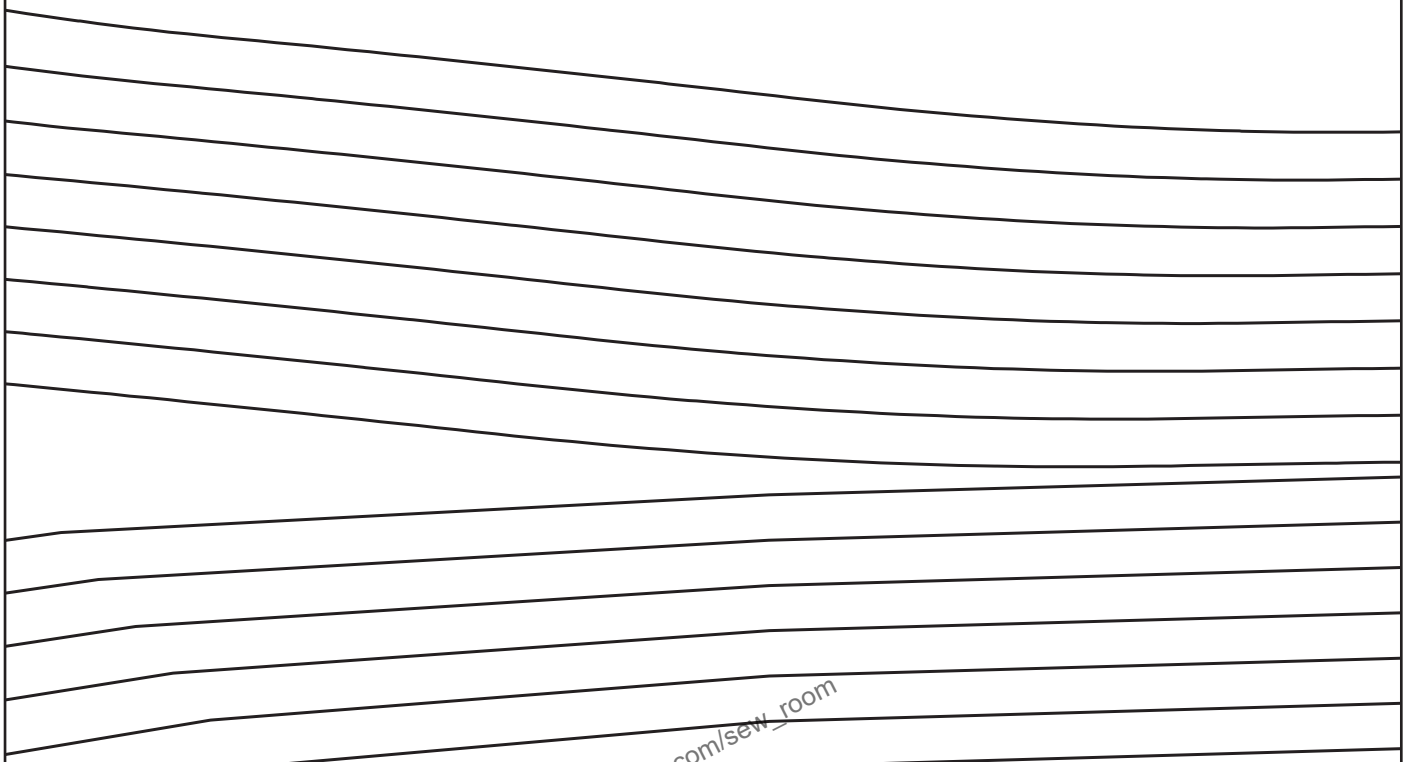


6



7







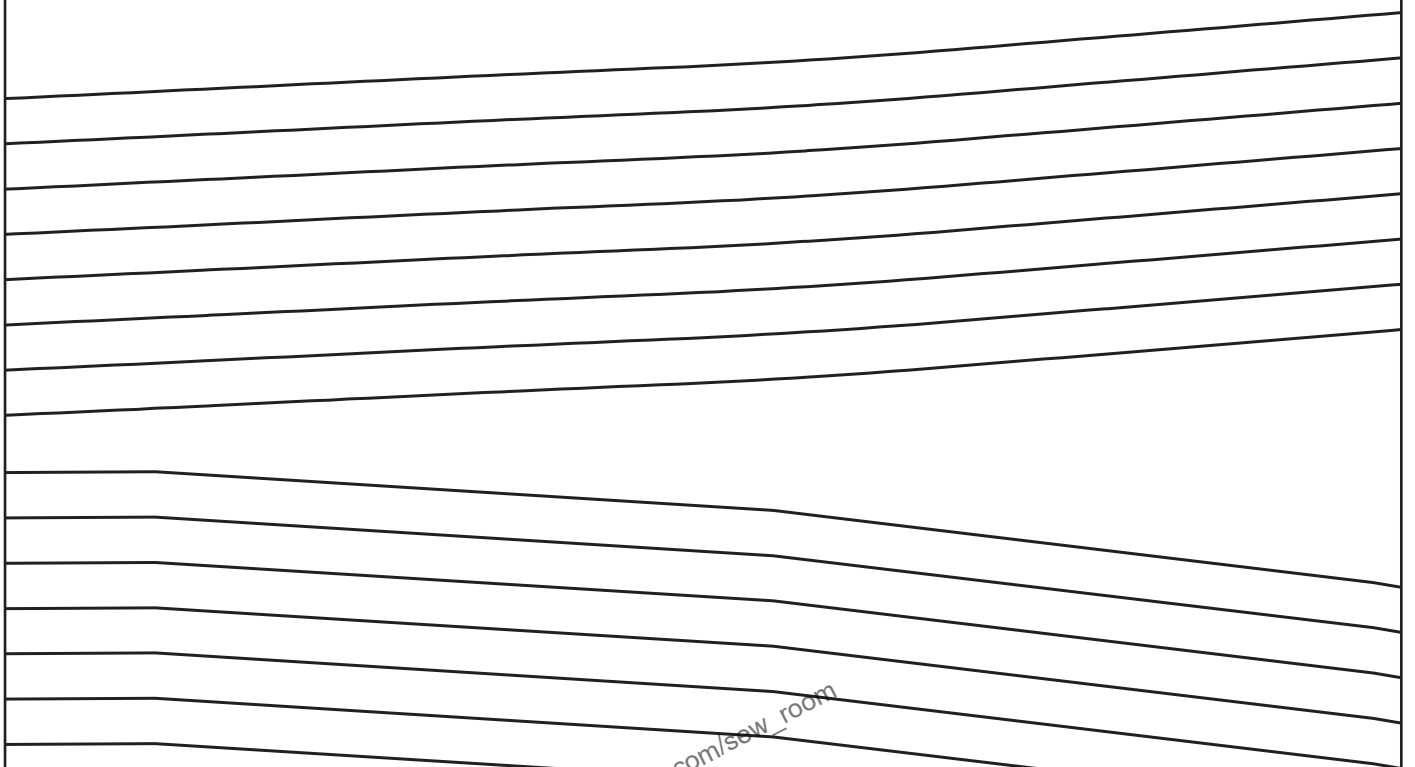
A series of horizontal lines forming a ruled area at the bottom of the page. The lines are slightly curved, creating a trapezoidal shape that tapers from left to right. There are 12 lines in total, including the top and bottom boundaries of the ruled area.

10

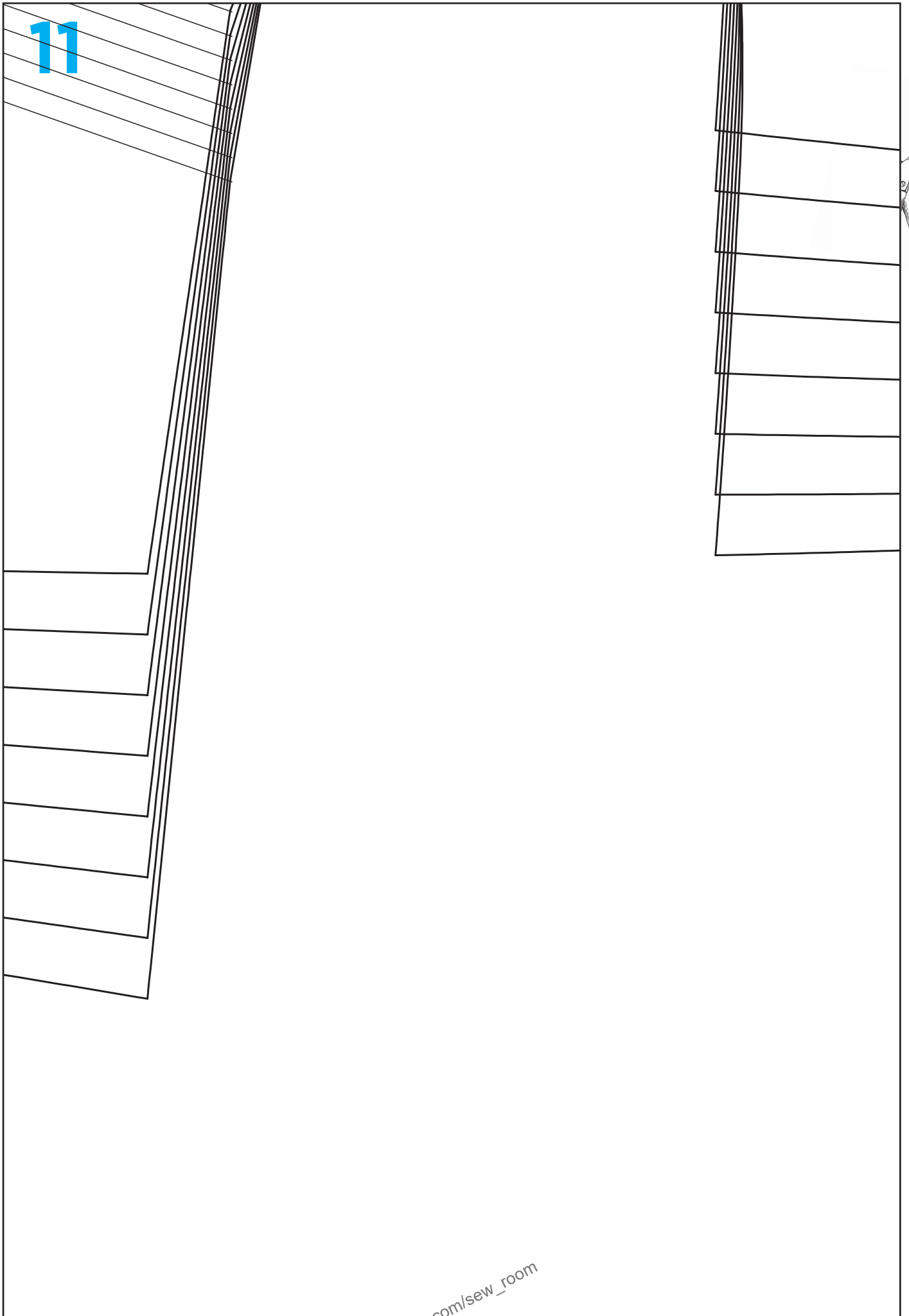
# BOB PANT graded 8, 10\*, 12, 14



перед



11



12

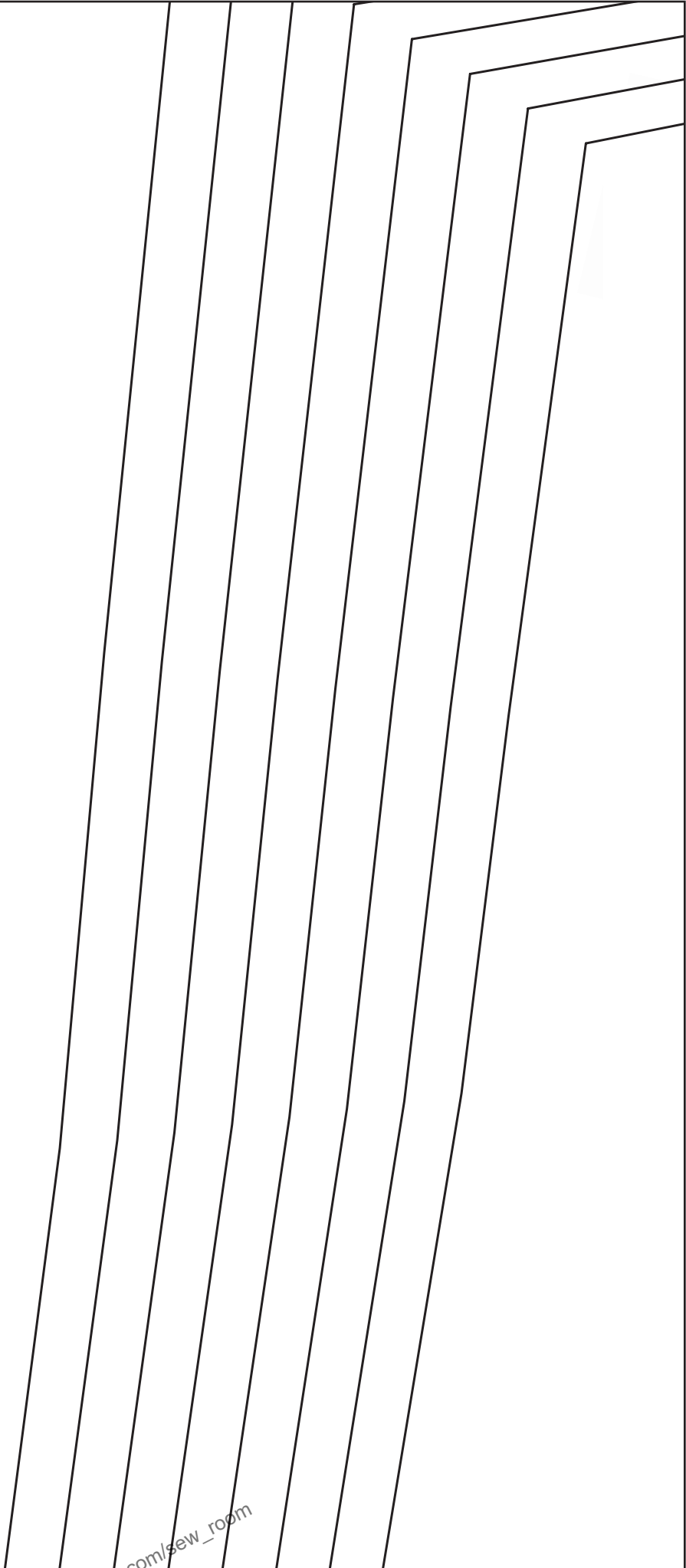


8

22











# BOB PANT graded 8,10

16



\* ,12,14,16,18,20,22 main cut x 1 pair

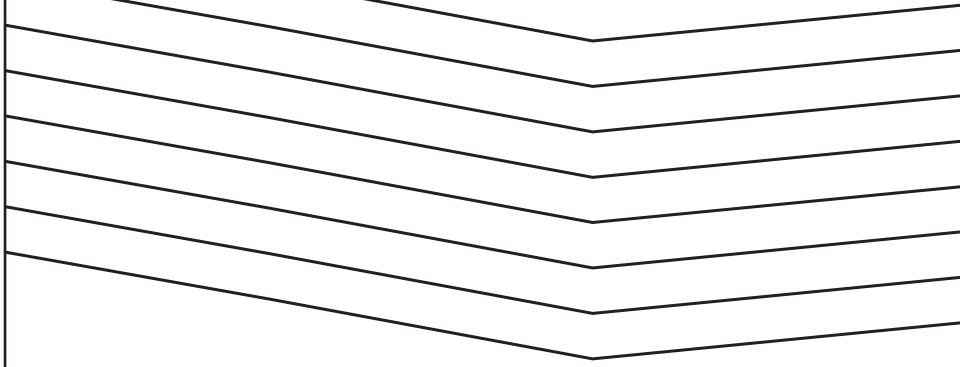
Back

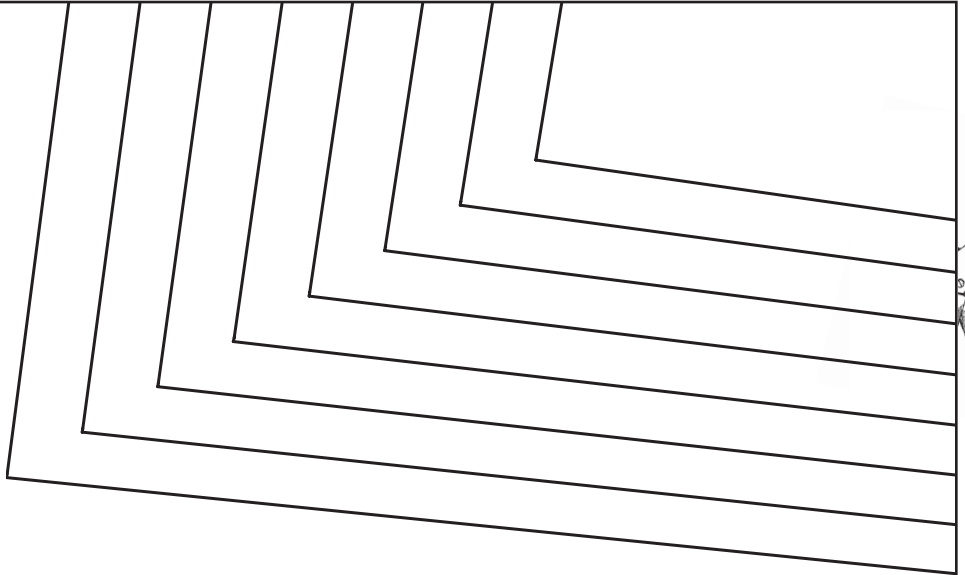
спинка

17

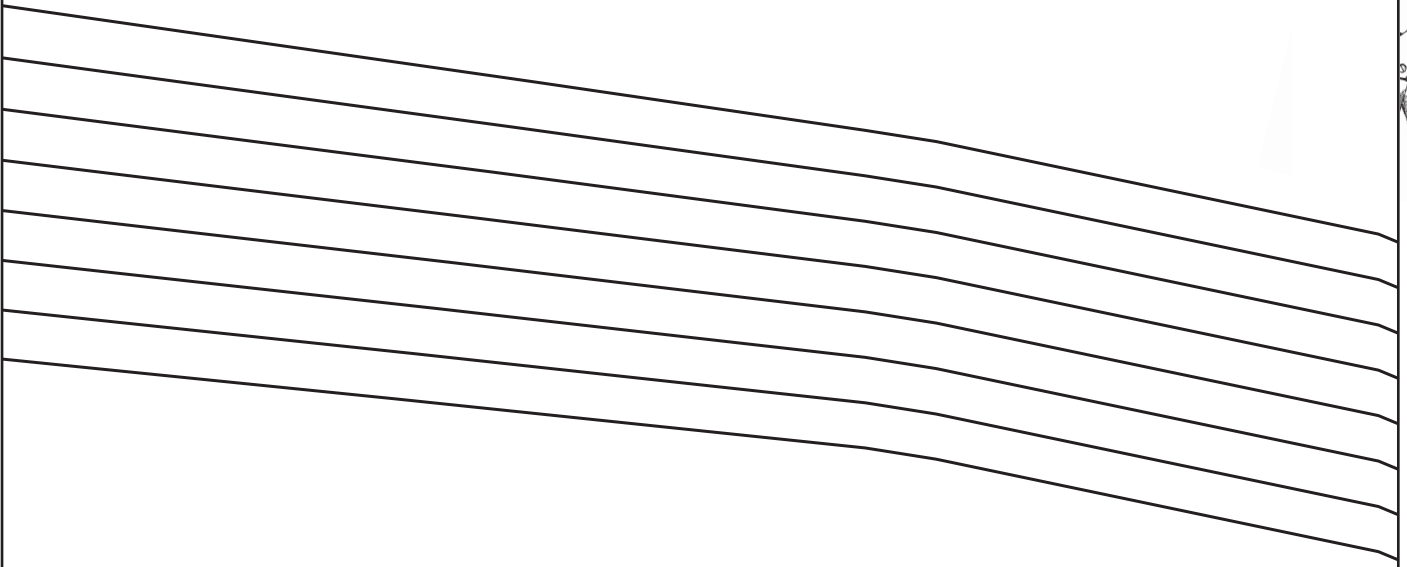


18

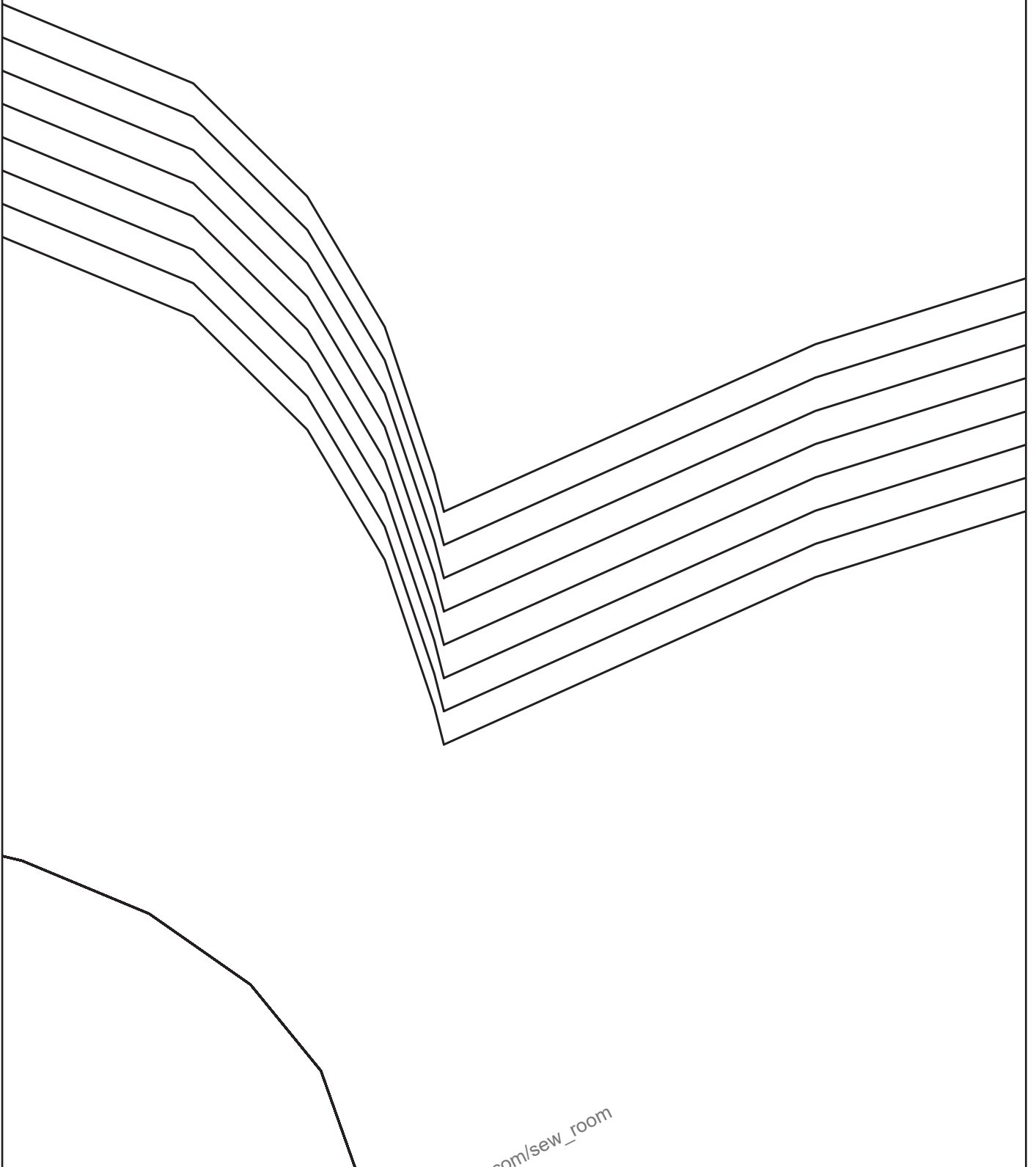


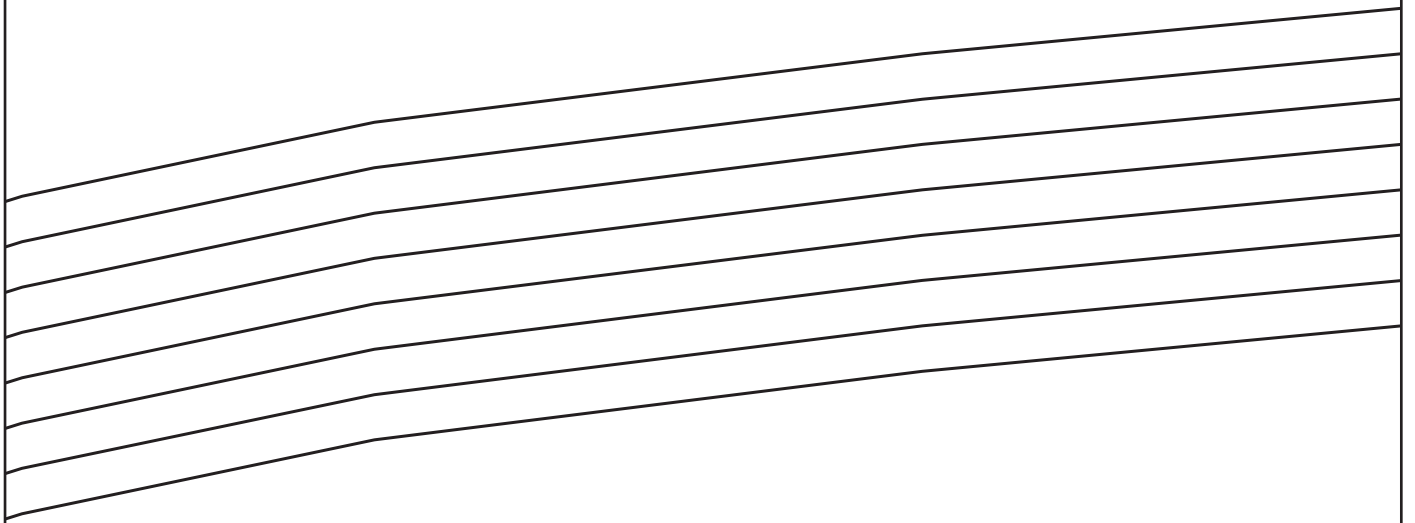


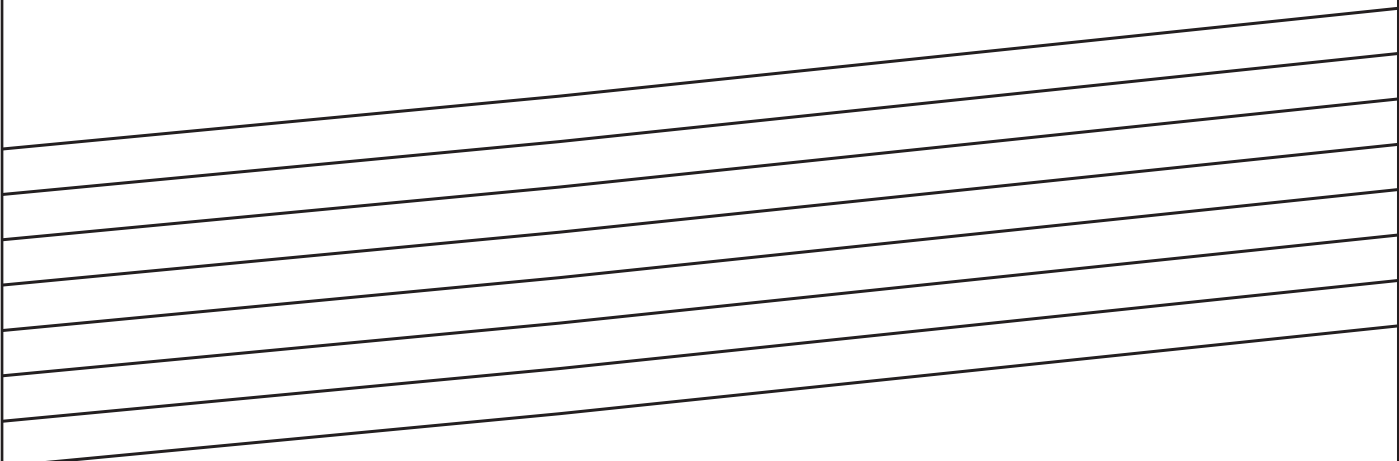
20





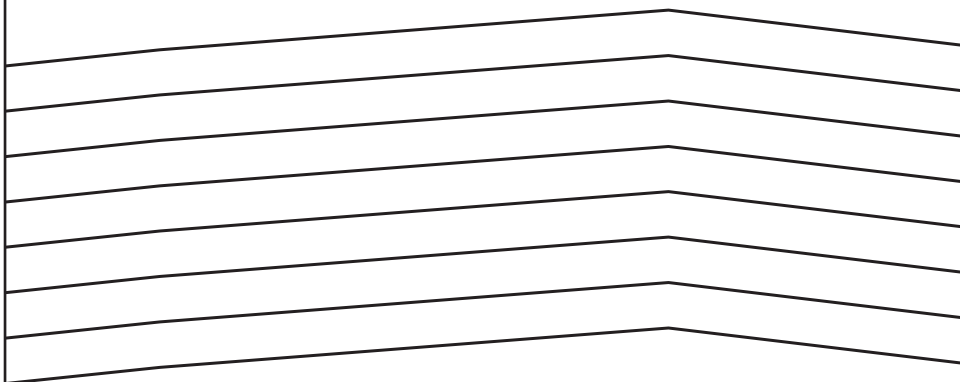






BOB PANT grad	
REF.	NAME:
0	front
1	Back
2	pocket
3	4

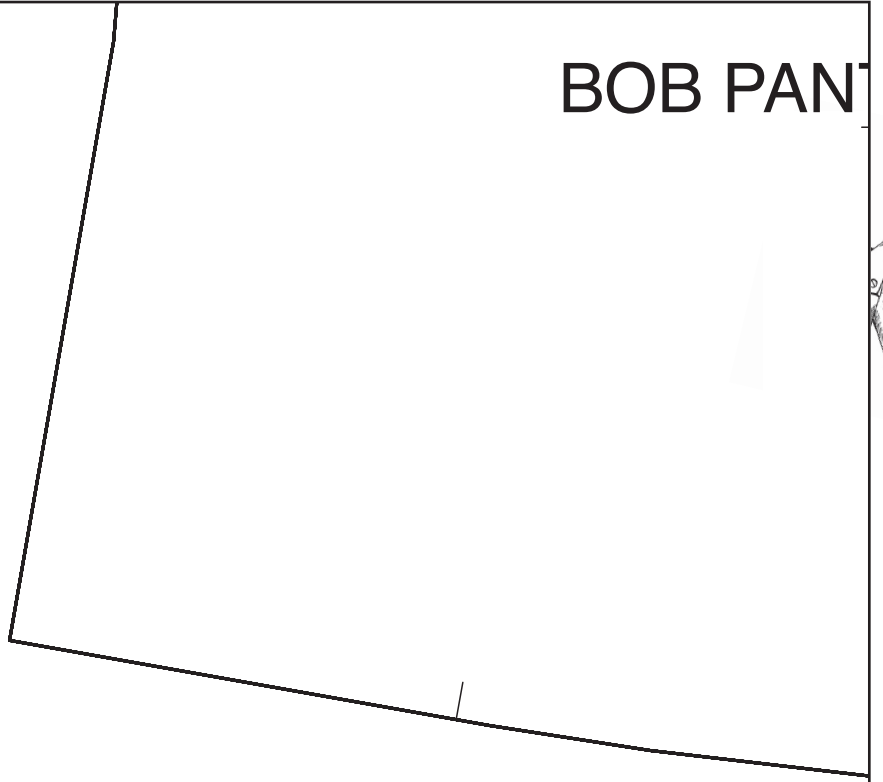
24



ed.PLT		
	Fabric	QTY/INV
	main	2 / 1
	main	2 / 1
	main	4 / 1
	main	1 / 0

25

BOB PANTS



26

Graded 8, 10\*, 12, 14, 16, 18, 20, 22 main cut x 2  
pocket



27  
pairs



--	--	--	--	--	--	--



ПОЯС





30



, 10\*, 12, 14, 16, 18, 20, 22 main

4

31

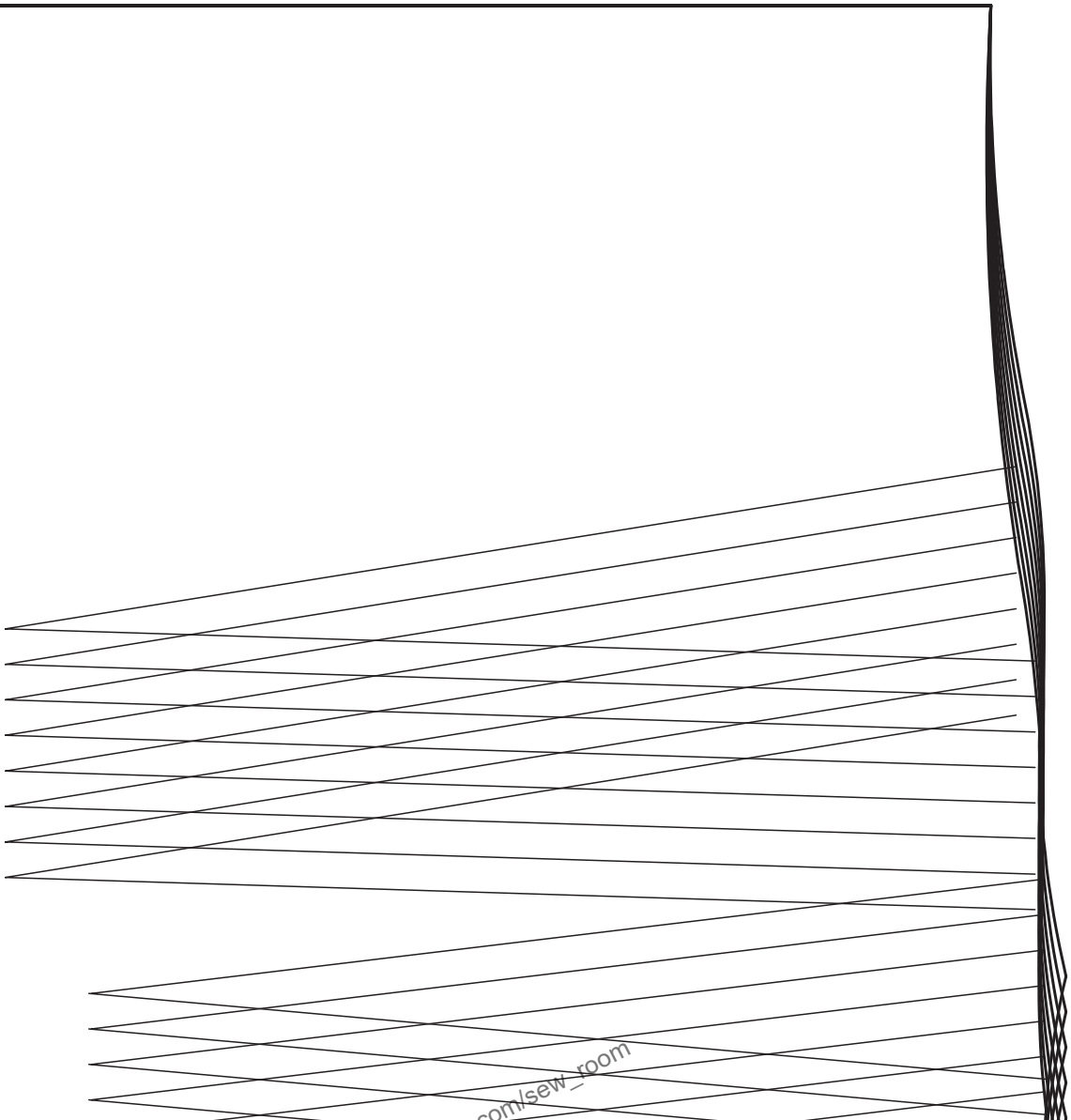


DOWN ON SLEEVE LS graded 8, 10\*, 12,  
back skirt

32



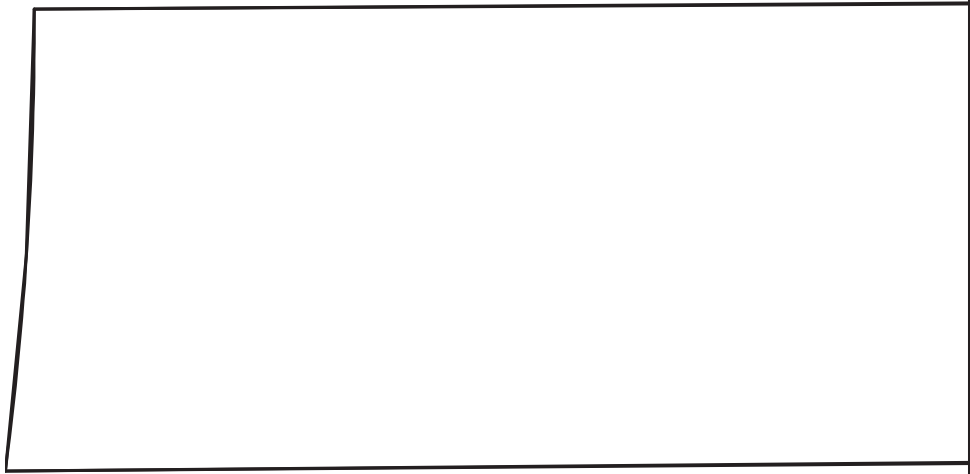
14,16,18,20,22 main cut x 1 on fold



34











WRAP P

38



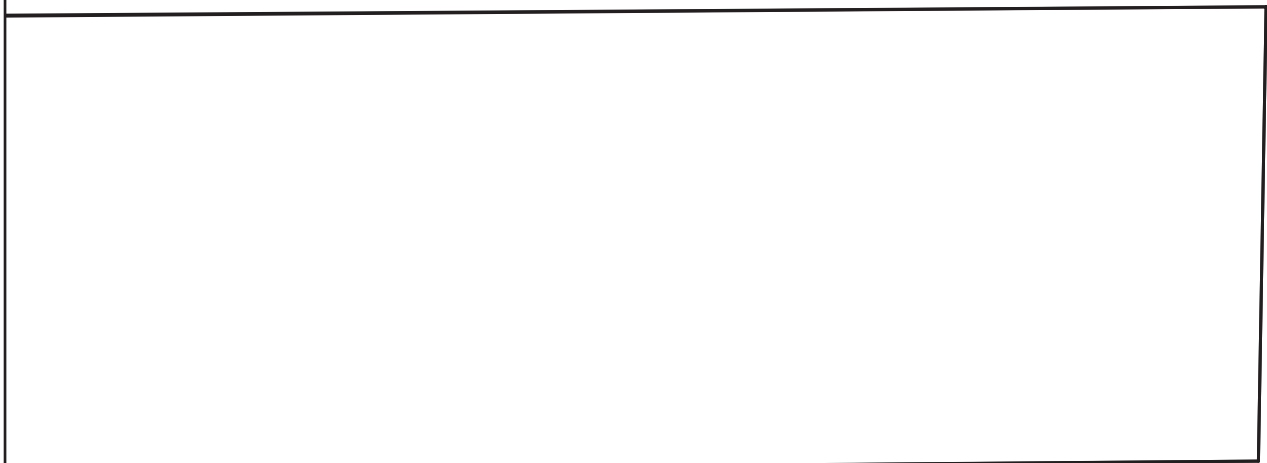
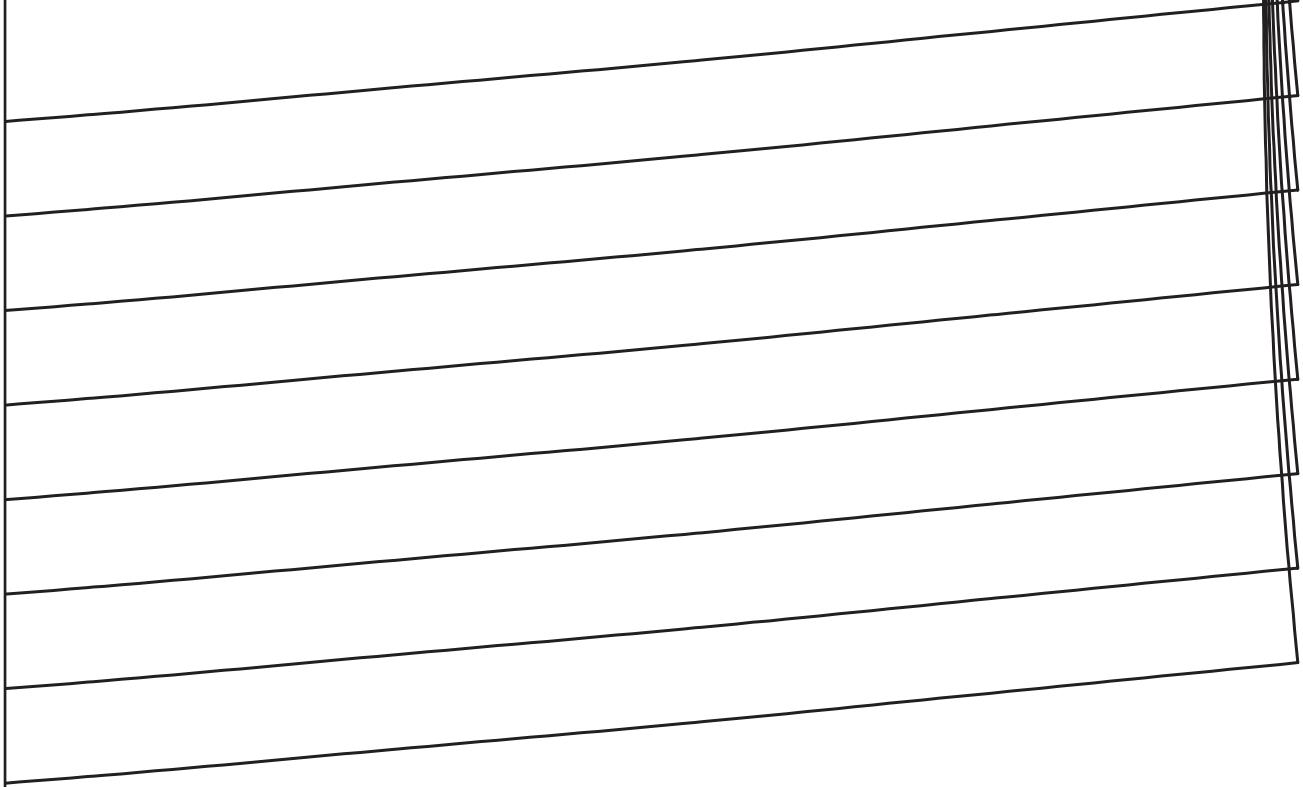
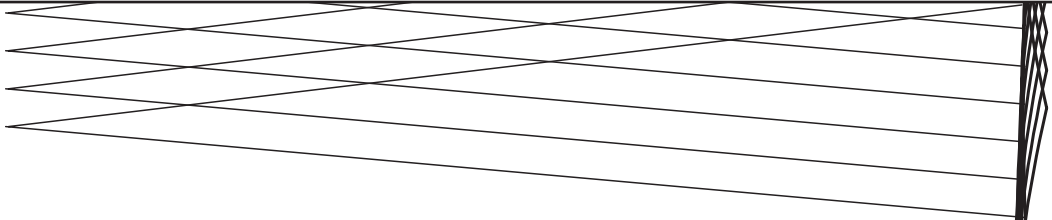
FRONT GROWN ON SLEEVE LS grade  
front skirt facing

39



ed 10\*, 12 main cut x 1 pair

40





WRAP FRONT GROWN ON	
REF.	NAME:
0	front
1	back skirt
2	front skirt facing
3	back bodice
5	front skirt
6	belt



SLEEVE LS graded.PLT		
	Fabric	QTY/INV
	main	2 / 1
	main	1 / 1
	main	2 / 1
	main	1 / 1
	main	2 / 1
	main	2 / 0



WR



AP FRONT GROWN ON SLEEVE LS g  
b



45



graded 8, 10\*, 12, 14, 16, 18, 20, 22 main c  
elt



46



ut x 2





--	--	--



--	--	--	--	--