

ШВЕЙНАЯ

КОМНАТА

https://vk.com/sew_room



THE LOLA DRESS

DRESS B

FRONT



BACK



Easy-sew

elasticated sleeves

SIZES
4-28

US 2-26
EUR 32-56

DRESS A

FRONT



BACK



Two hem
length options

https://vk.com/sew_room

THE LOLA DRESS

A summer style so easy to wear you'll want to make it in multiple palettes and prints

PACK INCLUDES

- Pattern sheets x2
- Instruction sheet

YOU WILL NEED

- Fabric: 3mx140cm or 3mx150cm
- Iron-on midweight woven interfacing: 50x90cm
- Bias binding: 3m
- Elastic, 5mm wide: 1m
- Matching thread
- Basic sewing kit

NOTES

- Seam allowance is 1cm; 5mm at front and back neckline; and 3cm at the hem.
- Press seams open as you go. For overlapped, French or bound seams, press towards the back.

- Make sure to interface your facings or use fusing tape around the neckline.
- Practice makes perfect, always make a toile before making your final garment.
- Dress length from highest point of shoulder when worn is 100cm and 110cm for longer version.
- Our model is 5'6" tall.

RECOMMENDED FABRIC

- Medium- to lightweight woven fabrics such as 100% linen, linen mix, Tencel, Tencel lawn, cotton and cotton broderie anglaise.



Carla Diogo (she/her) runs sewing lessons at her design studio, Set Square Patterns, @setsquarepatterns

BODY MEASUREMENTS

SIZE	XS	S	M	L	XL	XXL	XXXL							
UK	4	6	8	10	12	14	16	18	20	22	24	26	28	
US	2	4	6	8	10	12	14	16	18	20	22	24	26	
EUR	32	34	36	38	40	42	44	46	48	50	52	54	56	
TO FIT BUST	cm	72	74	79	84	89	94	99	104	109	114	119	124	129
	in	27	29	31	33	35	37	39	41	43	45	47	49	51
TO FIT WAIST	cm	55	60	65	70	75	80	85	90	95	100	105	110	115
	in	21½	23½	25½	27½	29½	31½	33½	35½	37½	39½	41½	43½	45½
TO FIT HIPS	cm	83	88	93	98	103	108	113	118	123	128	133	138	143
	in	32½	34½	36½	38½	40½	42½	44½	46½	48½	50½	52½	54½	56½

© Printed in the UK for *Simply Sewing*. Design by Carla Diogo.

Supplied by Our Media Ltd (an Immediate Group Company), Bristol, BS1 4ST.

For individual, private use only and not for commercial or manufacturing purposes. Not for resale.

Simply
Sewing
FRESH IDEAS WITH FABRIC

SET
Square
PATTERNS

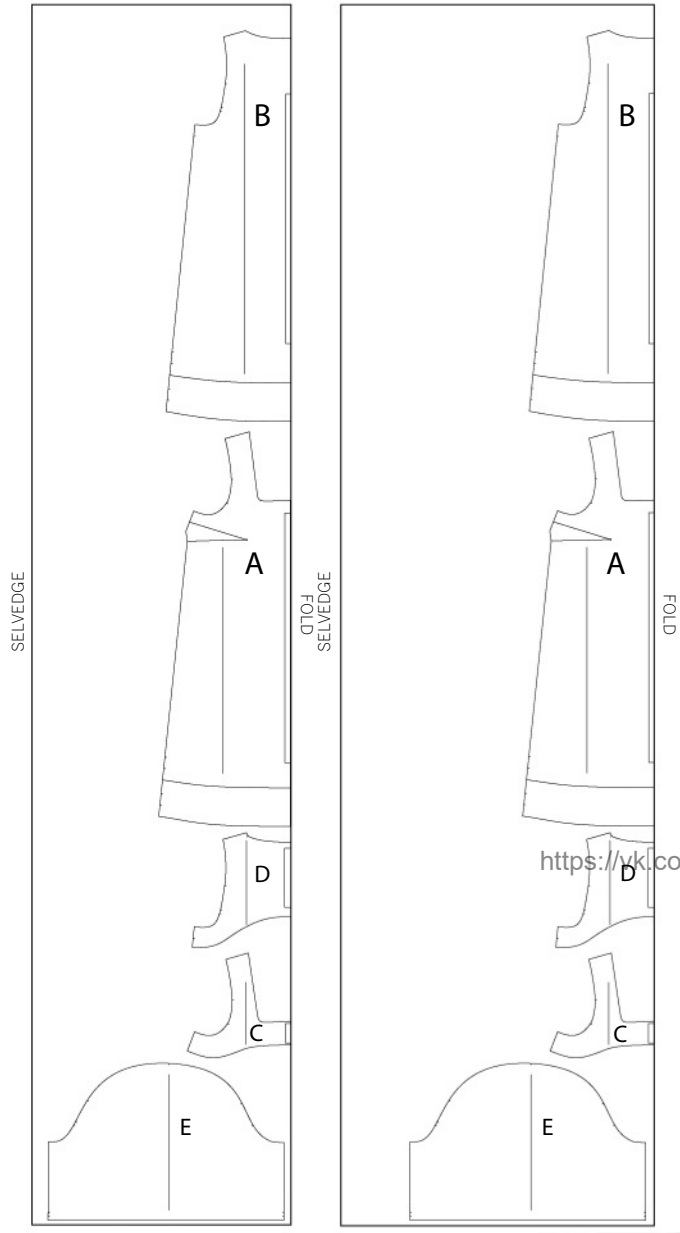
WWW.GATHERED.HOW/SIMPLYSEWING

INSTAGRAM @SET SQUARE PATTERNS

CUTTING LAYOUT

DRESS A AND B (ALL SIZES)
MAIN FABRIC – 140CM WIDE

DRESS A AND B (ALL SIZES)
MAIN FABRIC – 150CM WIDE

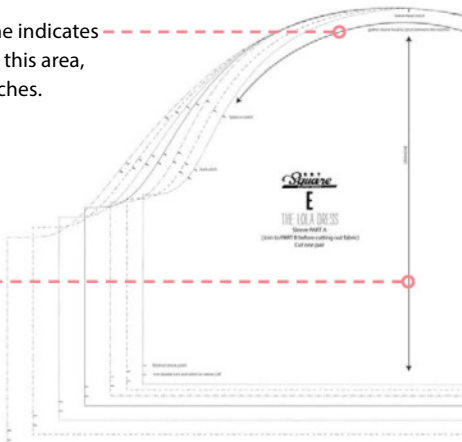


https://www.kk.com/sew_room

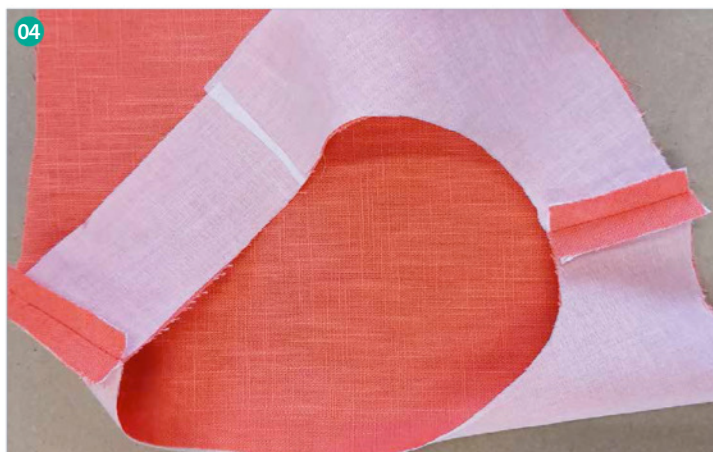
PATTERN MARKINGS

Gather markings: This line indicates that you should gather in this area, usually between two notches.

Grainline: The grainline indicates the direction the pattern piece should face on the fabric. The grainline should run parallel to the selvages.



A DRESS



https://vk.com/sew_room

STITCHING TERMS

RS/WS: Right side/wrong side of the fabric. The right side usually has the print, design or texture and the wrong side is usually plain or duller in appearance.

Machine tack: Use a long stitch length to hold a section in place. Don't backstitch at the start and end.

Finish the seams: Finish the raw edges with a zigzag stitch or an overlocker.

Press: Pressing fabric is placing the iron down, holding it for a few seconds, lifting it and placing it down again. Ironing is the movement of sliding the iron back and forth to remove creases.

Understitch: Stitch close to the seam line, usually on the side that will be on the inside of the garment such as the facing. This will hold the seam allowance in place when the garment is worn.

Stay stitch: Stitching in areas prone to stretching such as necklines to hold the fabric in shape while it is being worked on.

Topstitch: Stitching, usually from the right side of the garment, to hold seam allowances in place or can be used for decorative purposes.

Toile: A test garment, often made from calico or muslin to check the fit or test a pattern before the real fabric is used. Known as a muslin in the US.

For more sewing terms, visit gathered.how/sewing-glossary

CUTTING OUT

Step one From the main fabric cut:

Front (A): one on fold

Back (B): one on fold

Front Facing (C): one on fold

Back Facing (D): one on fold

Sleeve (E): one pair

Step two From the interfacing cut:

Front Facing Interfacing (C): one on fold

Back Facing Interfacing (D): one on fold

PREPARATION

Step one Press the matching iron-on interfacing pieces to the Front Facing and Back Facing.

MAKING THE DRESS

SEWING THE DARTS

Step one Mark the darts with chalk from the dart point to the outer notch.

Step two Match dart notches by folding the fabric right side (RS) together, you can press this area to help with laying flat.

Step three Sew the dart from the outer edge to the dart point, continuing to sew off of the fabric so the thread twists itself, then cut leaving a long thread length. Tie a double knot to stop the thread from unravelling. ⁰¹

Step four Press the dart.

SEWING THE FRONT AND BACK TOGETHER

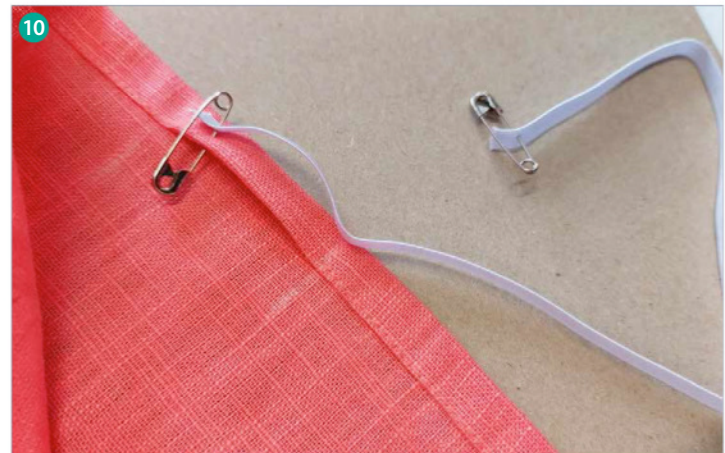
Step one Lay the Front and Back RS together.

Step two Sew the shoulder seams with a 1cm seam allowance then press the seams open. ⁰²

Step three Sew the side seams together with a 1cm seam allowance then overlock the edges together. Alternatively you can French seam or bind seam edges together with bias binding tape. Press the seams towards the back. ⁰³

SEWING THE FRONT AND BACK FACING

Step one Place the Front and Back Facings RS together and sew the shoulder and



https://vk.com/sew_room

side seams together with a 1cm seam allowance then press the seams open. ⁰⁴

Step two Overlock the hem of the assembled Facing or use pinking shears to stop it from fraying.

Step three Press the edge of the Facing to the wrong side (WS) by 1cm.

Step four Edge stitch the hemline to hold back the seam allowance. ⁰⁵

5mm seam allowance. ⁰⁶

Step two Trim the curved corners of the neckline to ease pulling once turned to RS.

Step three Understitch the seam allowance to the Facing by turning the seam allowance towards the Facing and sew close to the seam edge on the Facing side.

Step four Press the neckline from the RS, using a pressing cloth if necessary. ⁰⁷

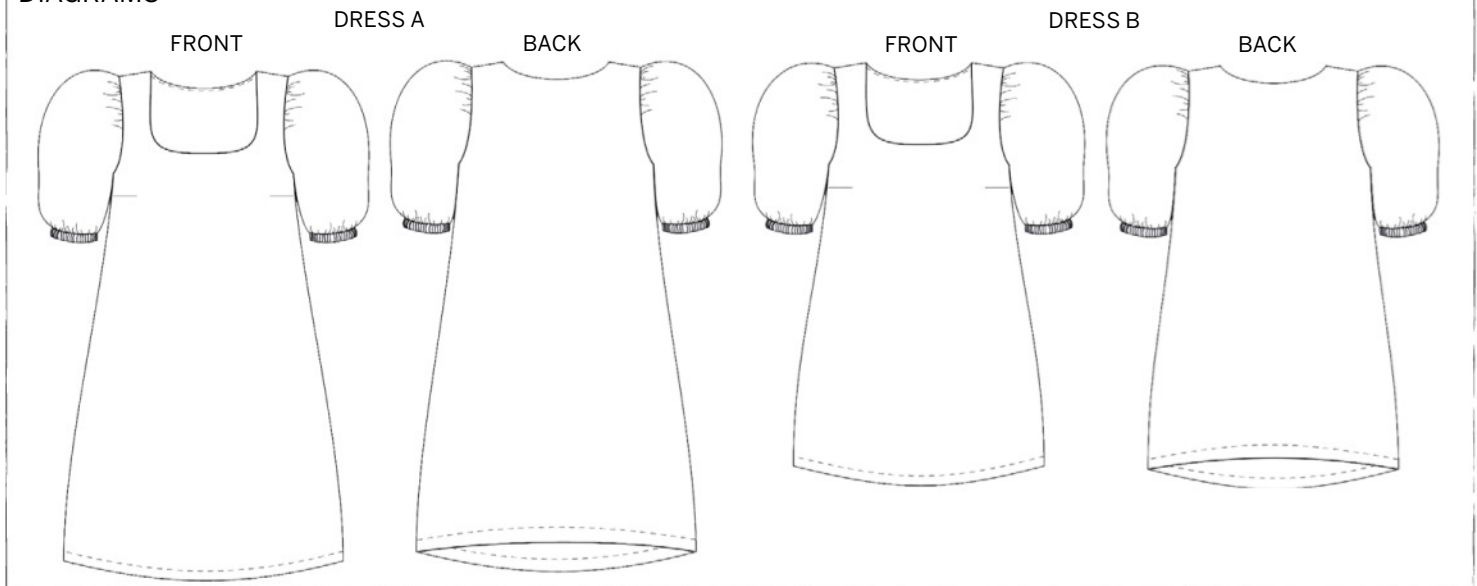
SEWING THE NECKLINE

Step one Pin the Facing and assembled dress neckline RS together and sew with a

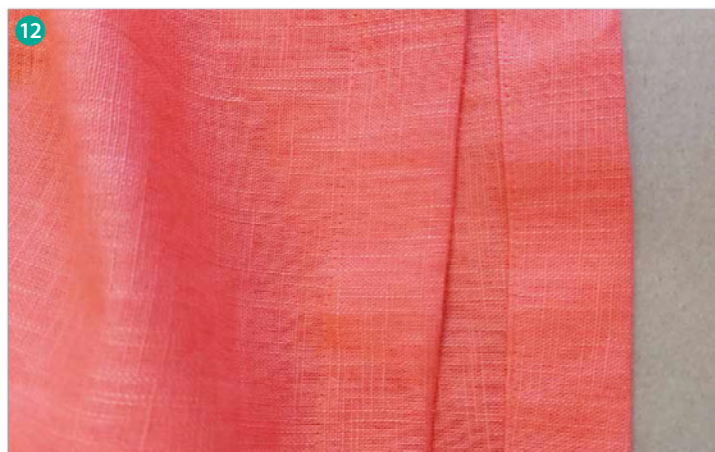
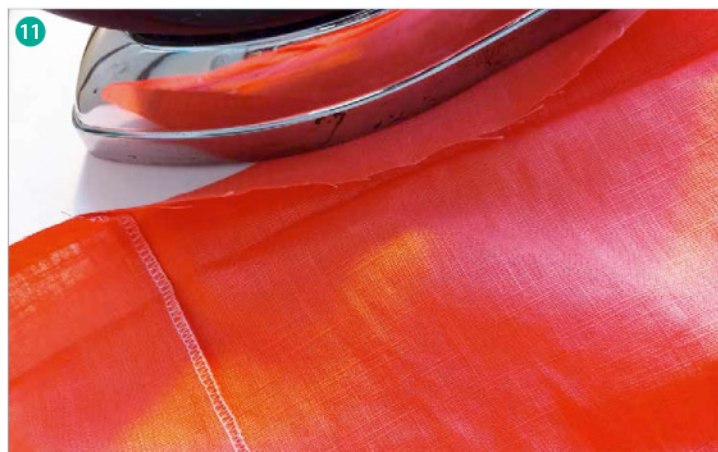
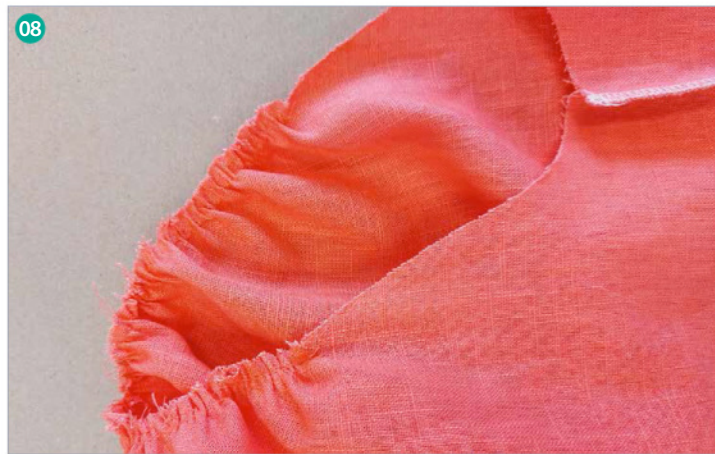
SEWING THE SLEEVES

Step one At the top of the sleeve head sew two rows of gathering stitches from

DIAGRAMS



A DRESS



https://vk.com/sew_room

notch to notch, making sure to back tack at the start and not at the end. The stitches must be within the 1cm seam allowance so that they are hidden when the Sleeve is sewn into the armhole.

Step two Pull the top two rows of thread and gather the sleeve cap until the sleeve head measures the same as distance between the balance notches.

Step three Tie a knot in the gathering threads to prevent unravelling. Distribute the gathers evenly. ⁰⁸

Step four Sew the Sleeve side seams together at 1cm and overlock the seam allowances together. Alternatively, sew a French seam or sew and bind the edges, then press towards the back.

Step five Press the Sleeve hem upwards to the WS with a 1cm double turn and mark a 4cm gap with chalk.

Step six Edge stitch from one chalk mark to the other leaving a small gap. ⁰⁹

Step seven Cut a length of elastic that fits snugly around your bicep and attach a safety pin to each end. Attach one end to the side of the gap. ¹⁰

Step eight Feed the elastic through the opening in the hem channel.

Step nine Remove the safety pins and overlap the elastic ends by 1cm.

Sew a zigzag stitch to hold it in place.

Step ten Stitch the gap in the hem channel closed.

Step eleven Pin the sleeve into the armhole and sew all layers together at 1cm. Overlock the raw edges or bind together with bias binding.

FINISHING THE HEM

Step one Press the hem up by 3cm, then turn up again by 3cm. ¹¹

Step two Pin the hem in place and topstitch with WS facing up. ¹²

Step three Press the hem for a crisp finish.

Simply Sewing
FRESH IDEAS WITH FABRIC

WWW.GATHERED.HOW/SIMPLYSEWING

SET Square
PATTERNS

INSTAGRAM @SET SQUARE PATTERNS

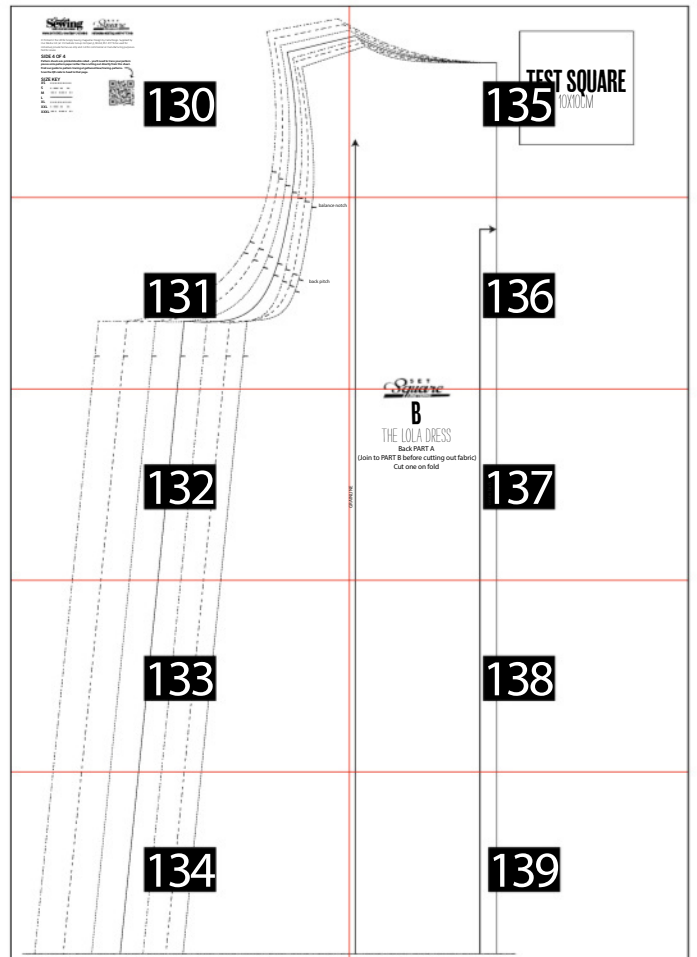
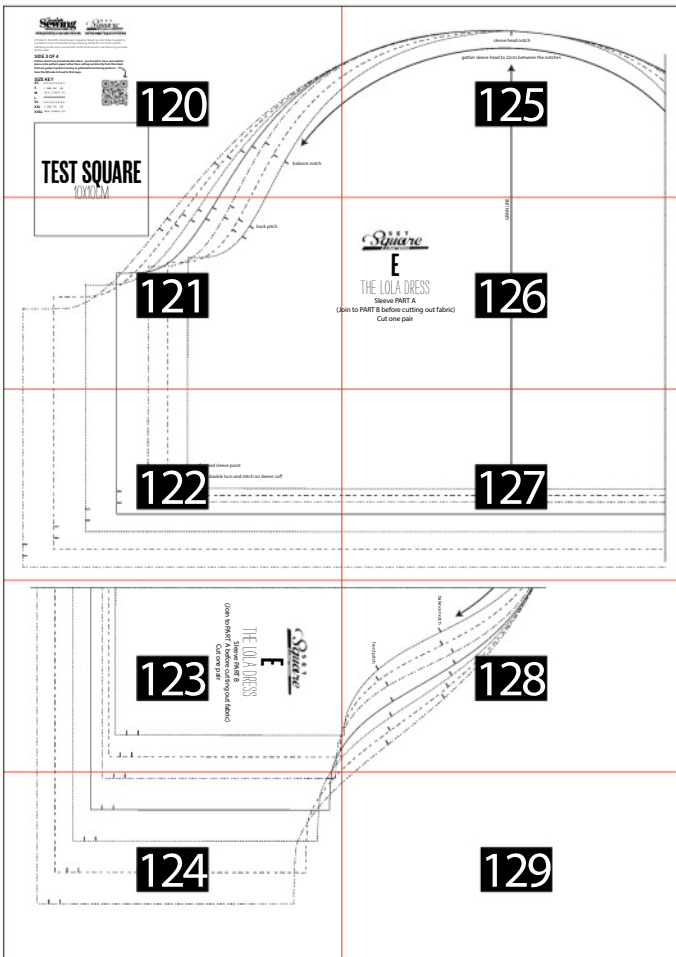
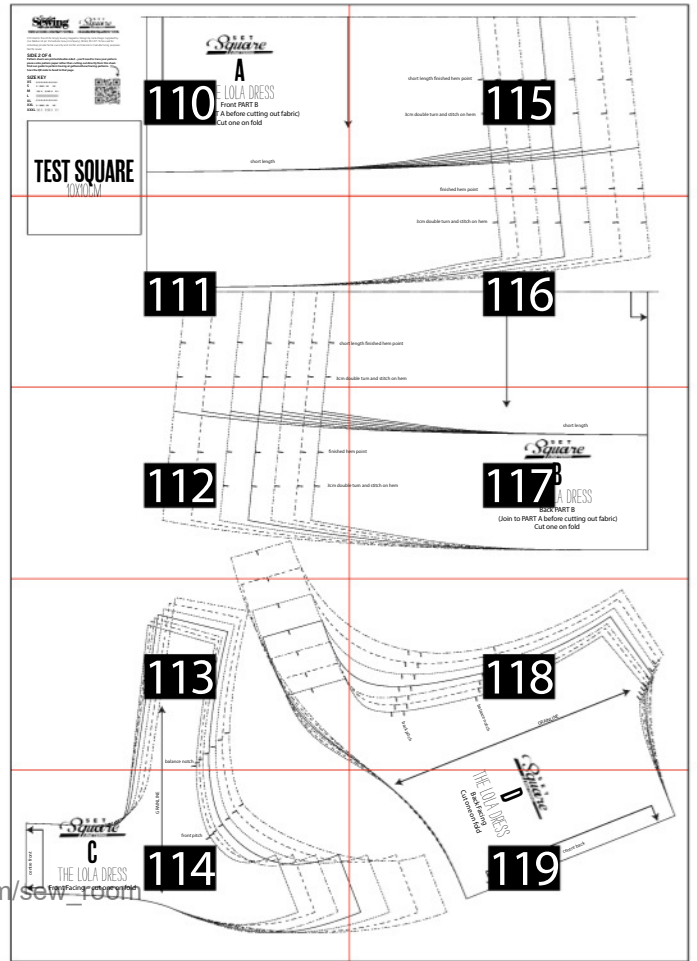
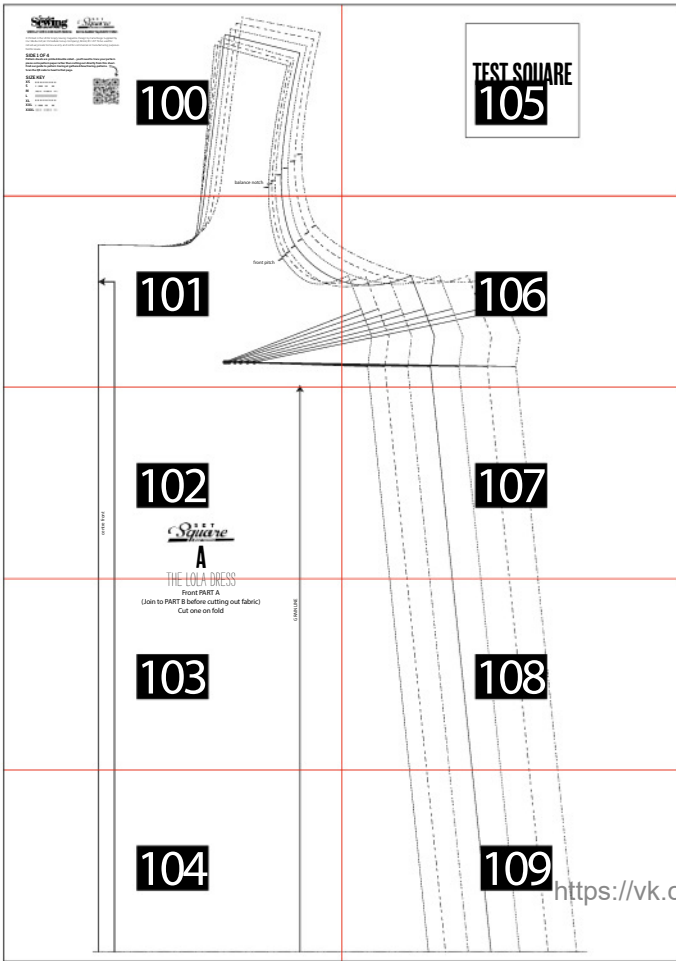
© Printed in the UK for *Simply Sewing*. Design by Carla Diogo. Supplied by Our Media Ltd (an Immediate Group Company), Bristol, BS1 4ST. To be used for individual, private home use only. Not for commercial or manufacturing purposes. Not for resale.

FINISHED GARMENT MEASUREMENTS

SIZE	XS	S		M		L		XL		XXL		XXXL		
UK	4	6	8	10	12	14	16	18	20	22	24	26	28	
US	2	4	6	8	10	12	14	16	18	20	22	24	26	
EUR	32	34	36	38	40	42	44	46	48	50	52	54	56	
BUST	cm	45	48		52		56		61		66		71	
	in	17¾	19		20½		22		24		26		28	
WAIST	cm	49	52		56		60		65		70		75	
	in	19¼	20½		22		23¾		25¾		27½		29½	

HOW TO PRINT THIS PATTERN

Print out the following pages on A4 paper at 100%.
Overlap the red lines and tape the sheets in place using the guide below.



SIDE 1 OF 4

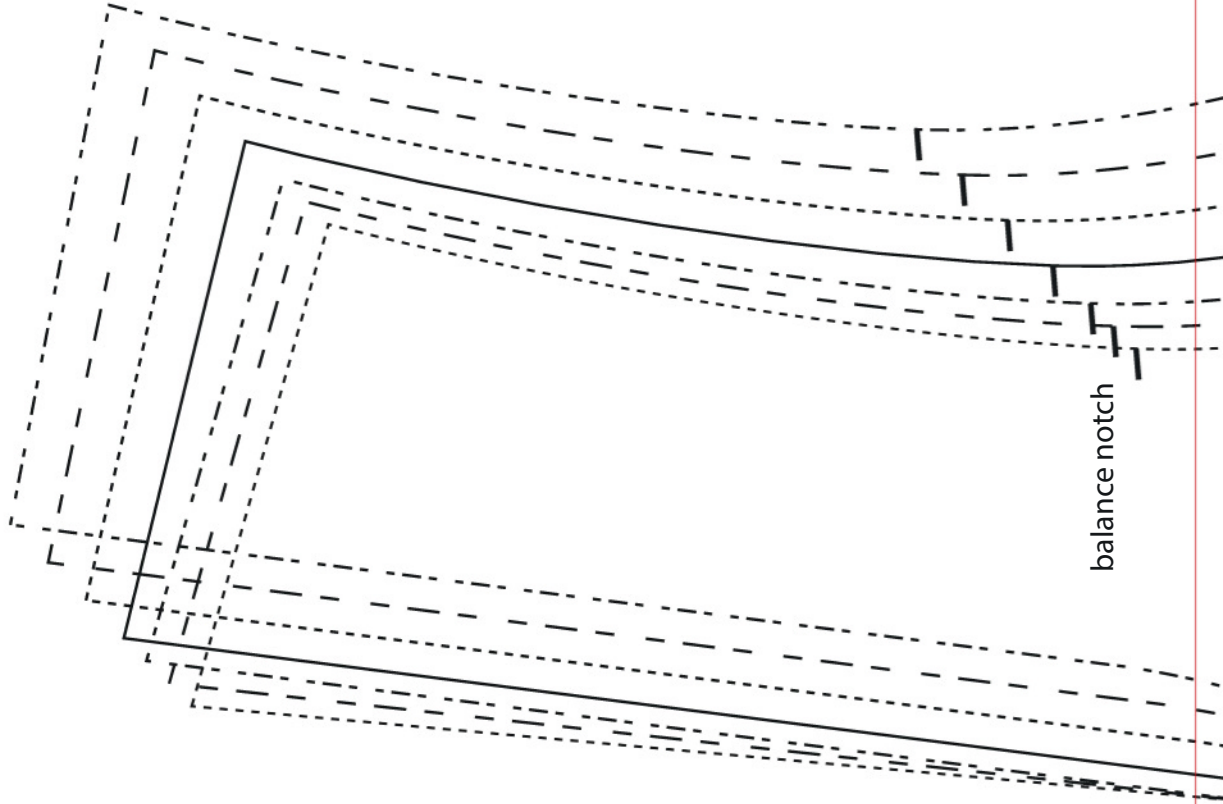
Pattern sheets are printed double sided – you'll need to trace your pattern pieces onto pattern paper rather than cutting out directly from this sheet. Find our guide to pattern tracing at gathered.how/tracing-patterns. Scan the QR code to head to that page.

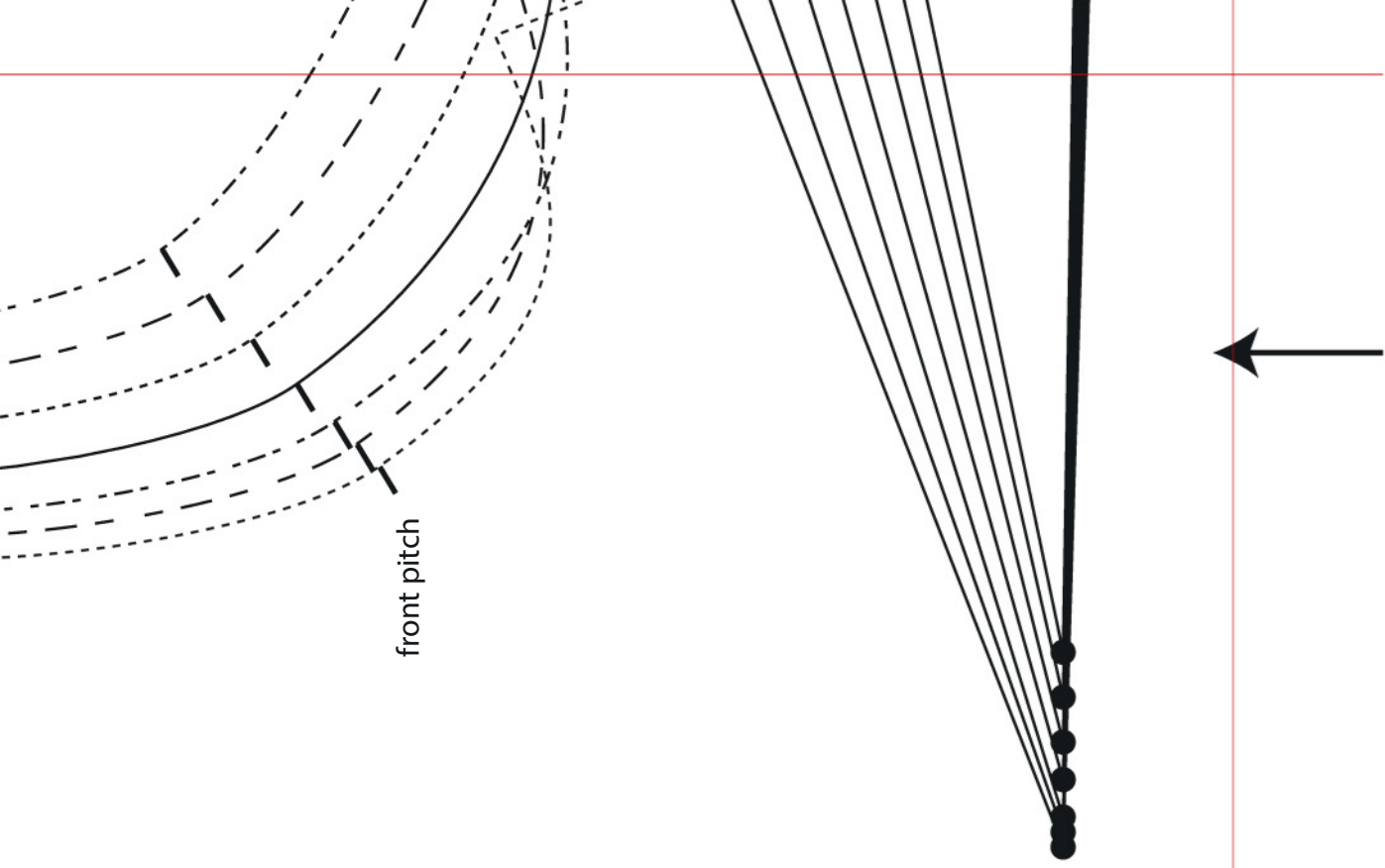
SIZE KEY

XS - - - - -
S - - - - -
M - - - - -
L - - - - -
XL - - - - -
XXL - - - - -
XXXL - - - - -

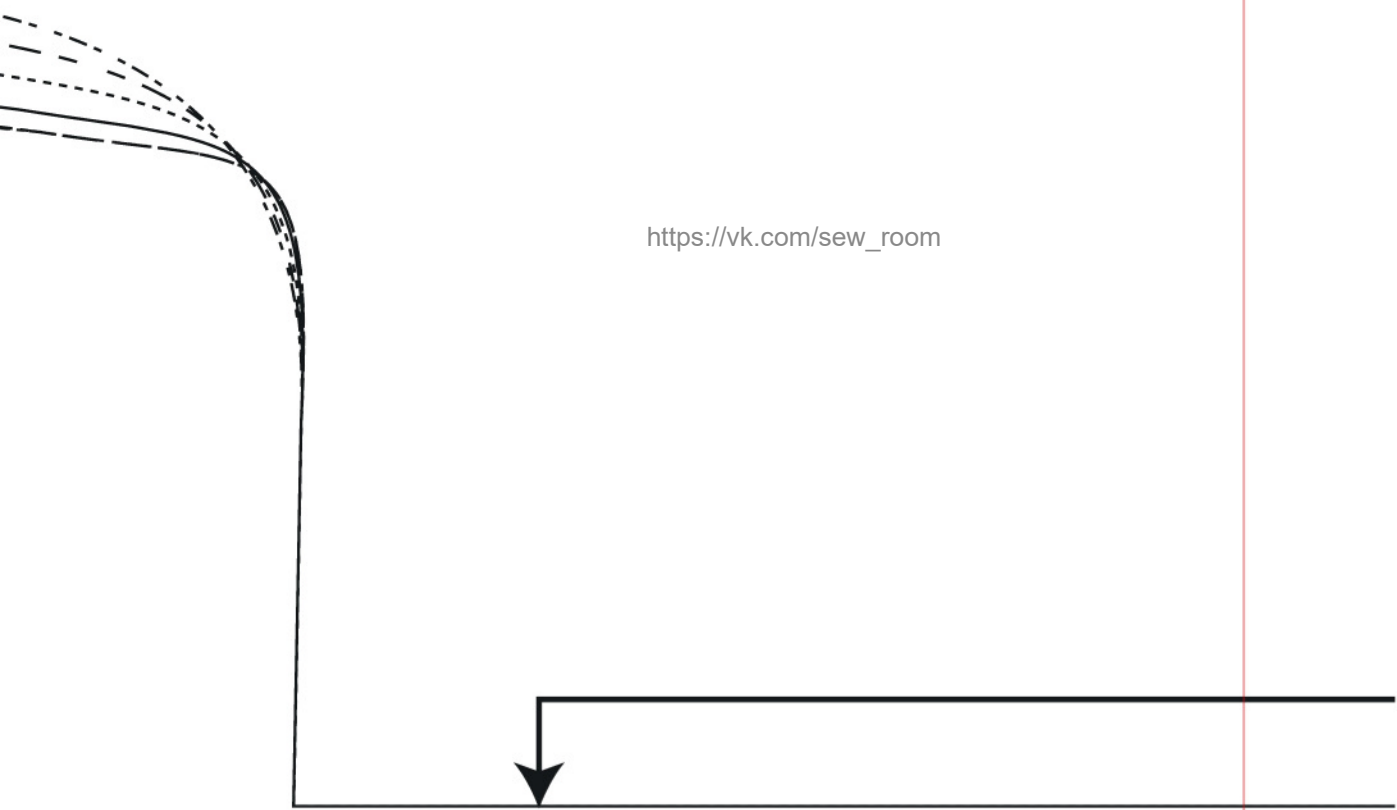


https://vk.com/sew_room





https://vk.com/sew_room





https://vk.com/sew_room

S E T
Square
PATTERNS

A

THE LOIA DRESS

centre front

THE LULA DRESS

Front PART A

(Join to PART B before cutting out fabric)

Cut one on fold

GRAINLINE

https://vk.com/sew_room

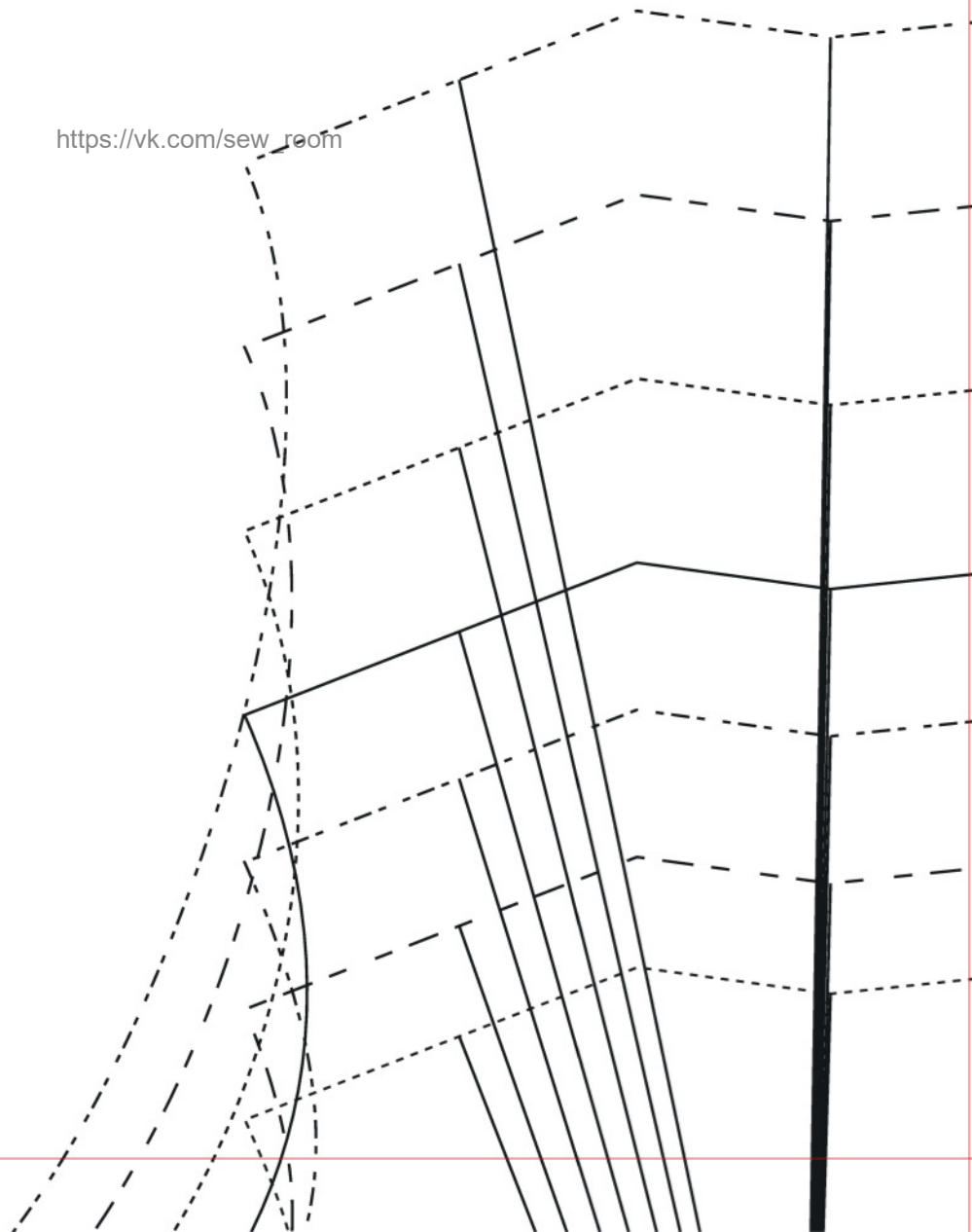
https://vk.com/sew_room

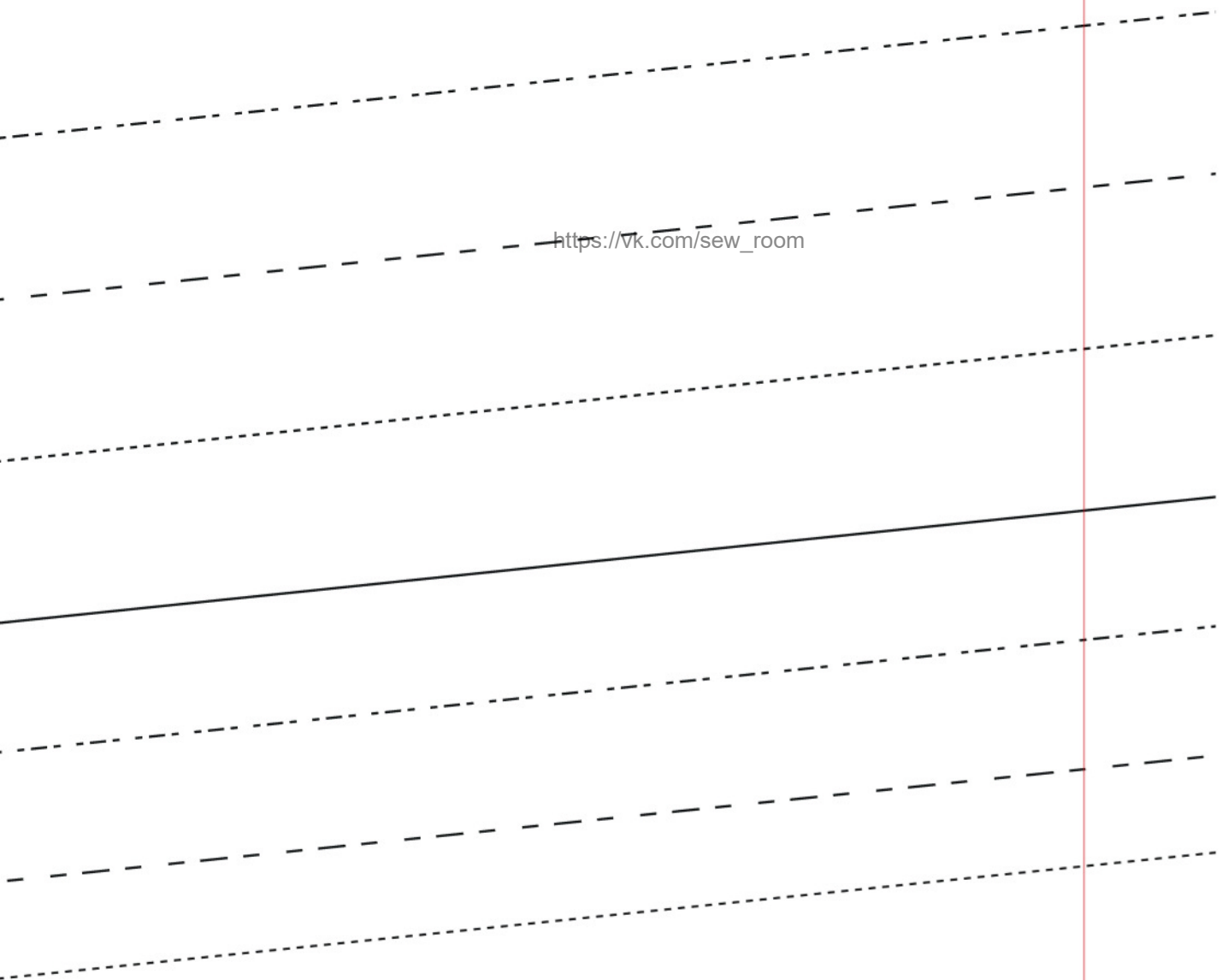
TEST SQUARE

10X10CM

https://vk.com/sew_room

https://vk.com/sew_room





https://vk.com/sew_room

https://vk.com/sew_room

https://vk.com/sew_room

SIDE 2 OF 4

Pattern sheets are printed double sided – you'll need to trace your pattern pieces onto pattern paper rather than cutting out directly from this sheet. Find our guide to pattern tracing at gathered.how/tracing-patterns. Scan the QR code to head to that page.

SIZE KEY

XS -----
S -----
M -----
L -----
XL -----
XXL -----
XXXL -----



TEST SQUARE

10X10CM

https://vk.com/sew_room

SET
Square
PATTERNS

A

THE LOLA DRESS

Front PART B

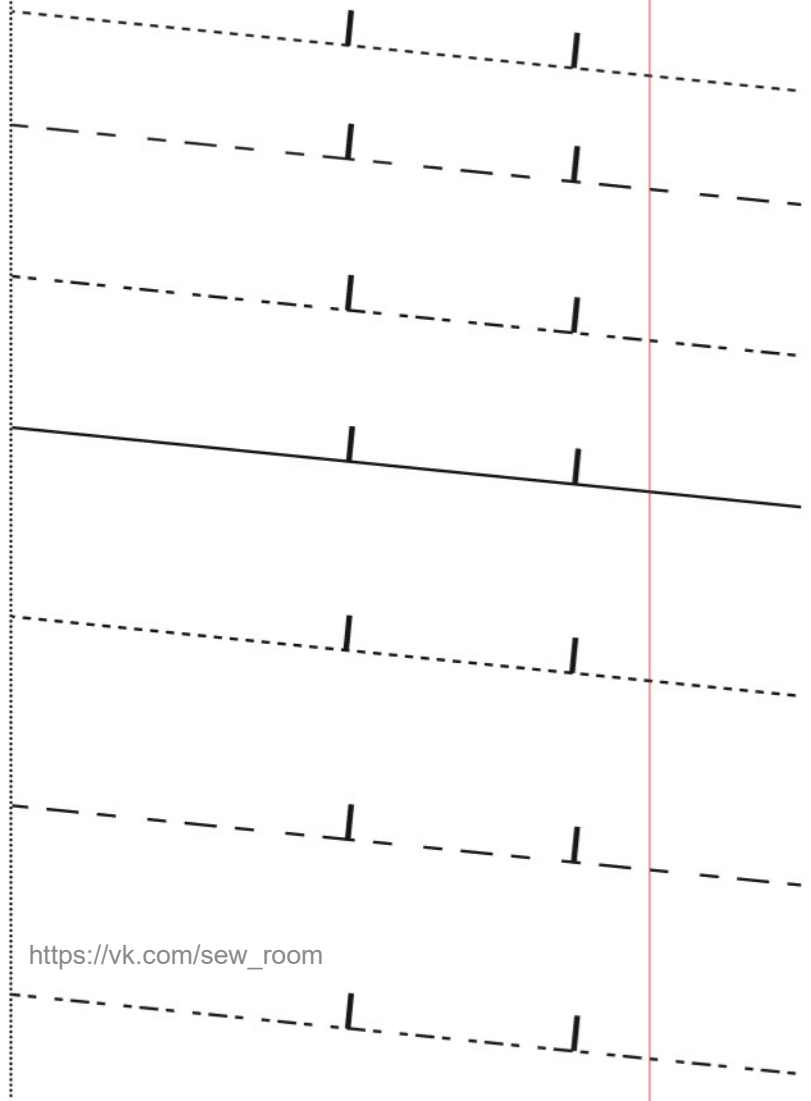
(Join to PART A before cutting out fabric)

Cut one on fold

short length

short length

3cm double

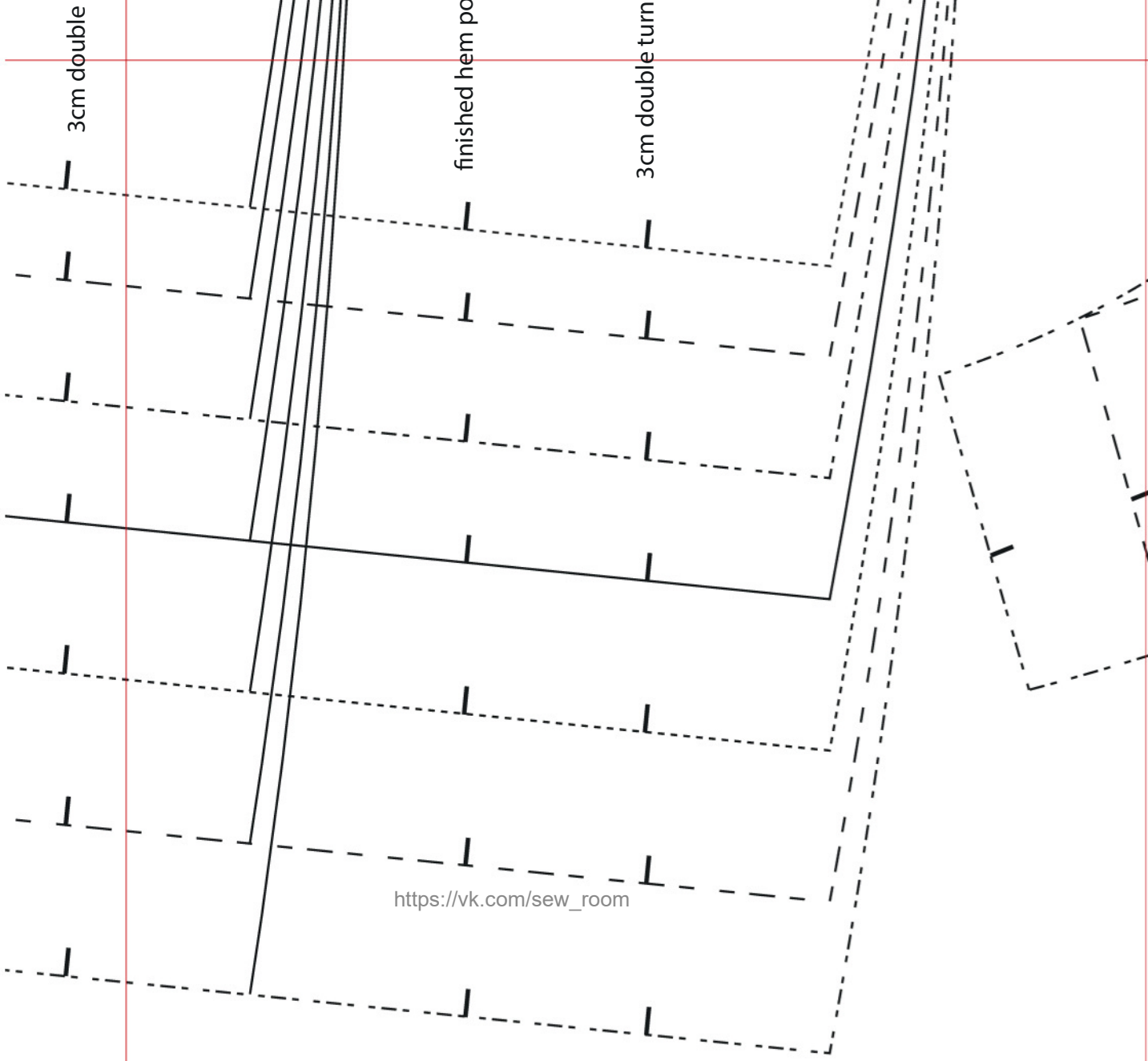


https://vk.com/sew_room

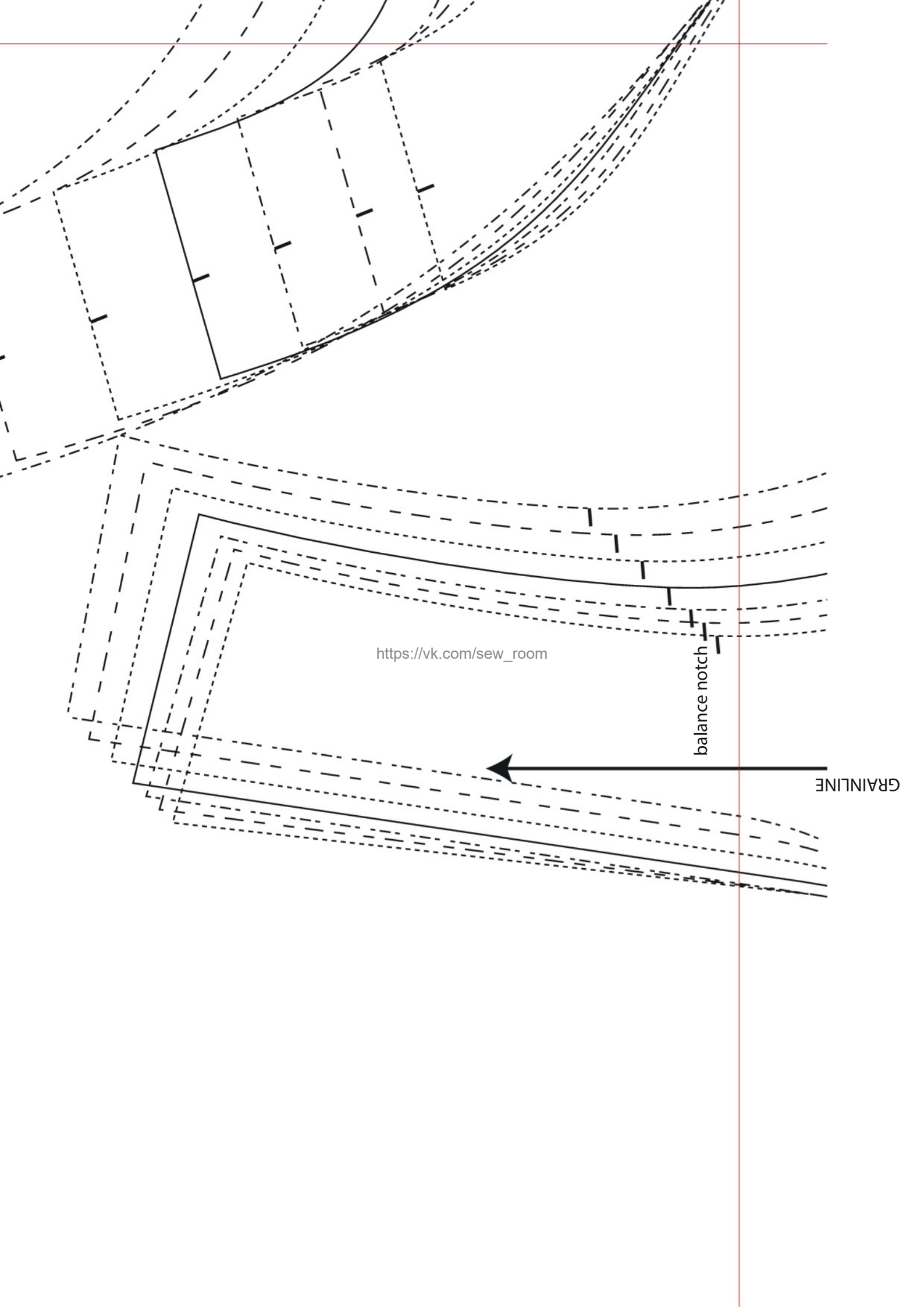
3cm double

finished hem po

3cm double turn



https://vk.com/sew_room



https://vk.com/sew_room

balance notch

GRAINLINE

S E T
Square
PATTERNS

C

THE LOLA DRESS

Front Facing – cut one on fold

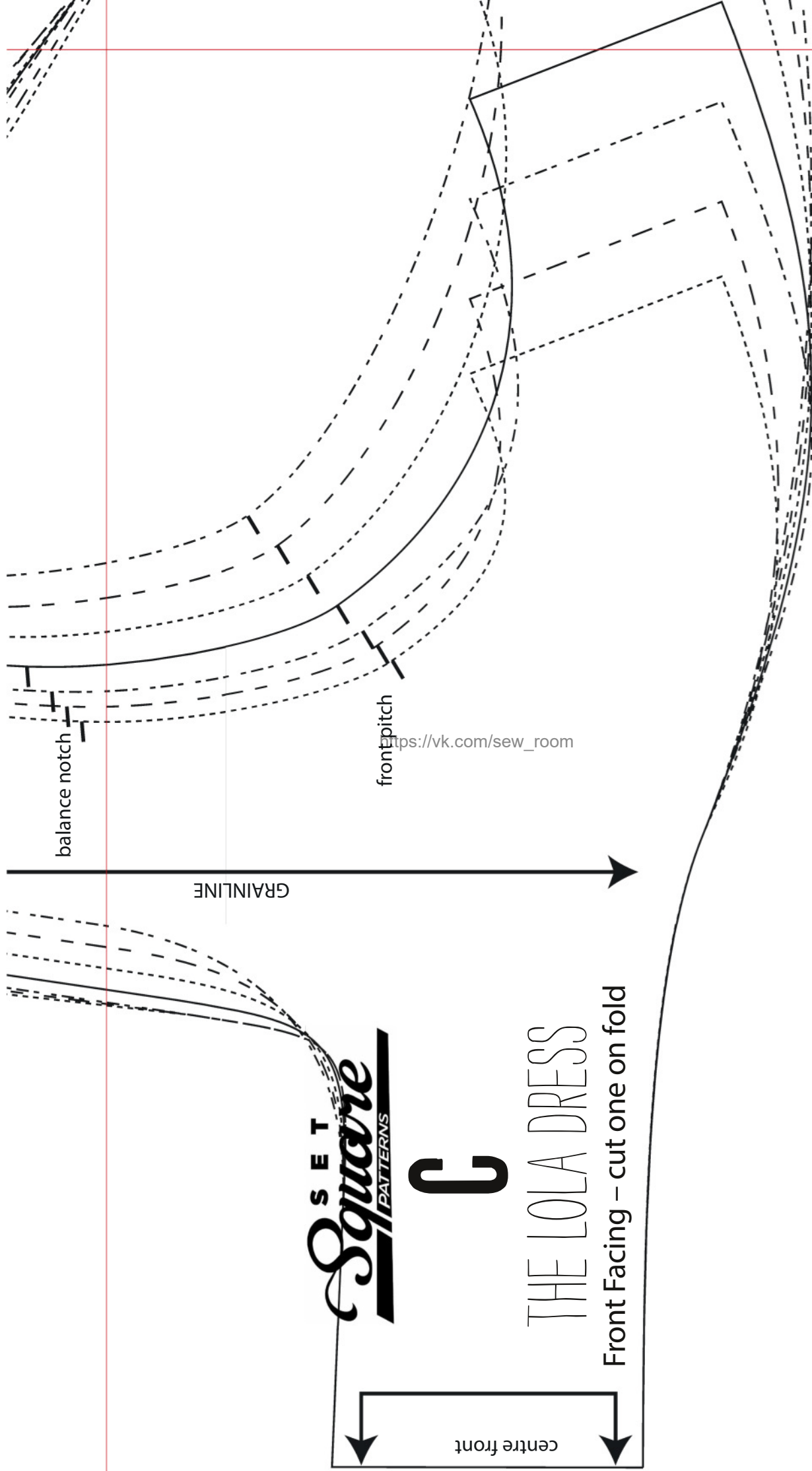
centre front

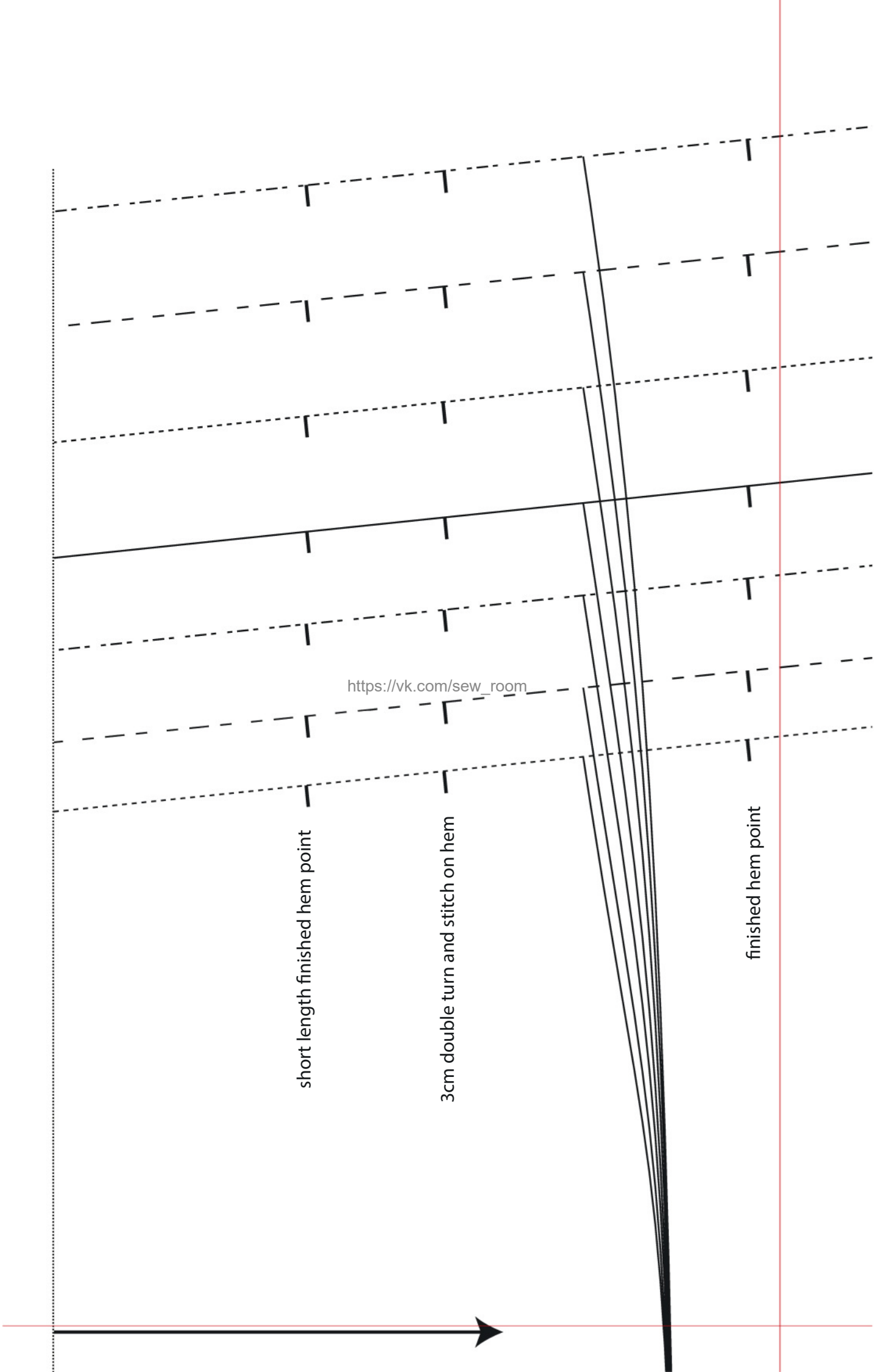
GRAINLINE

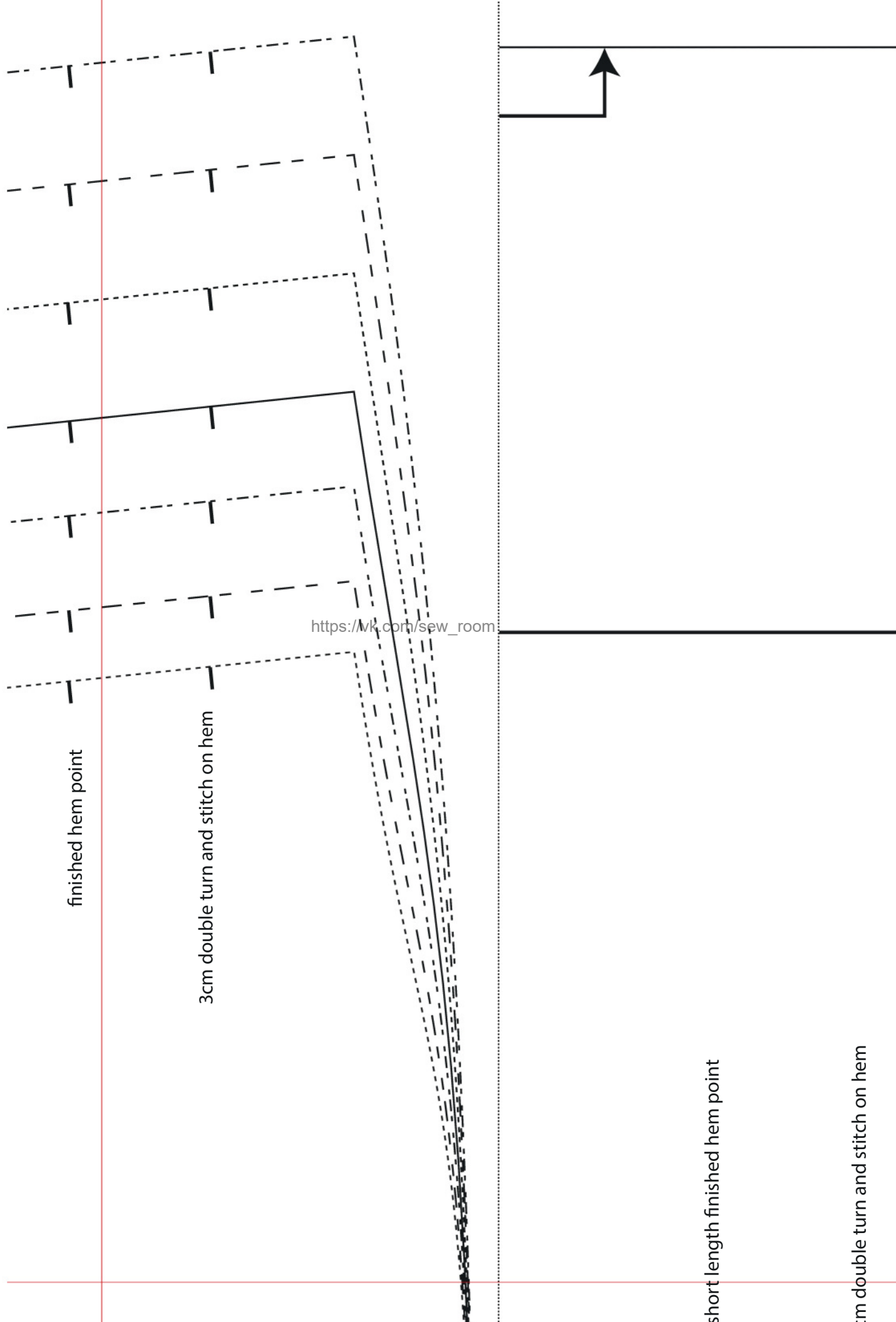
balance notch

front pitch

https://vk.com/sew_room







finished hem point

3cm double turn and stitch on hem

https://vk.com/sew_room

short length finished hem point

cm double turn and stitch on hem



short length

S E T
Square
PATTERNS

B

THE LOLA DRESS

Back PART B

(Join to PART A before cutting out fabric)

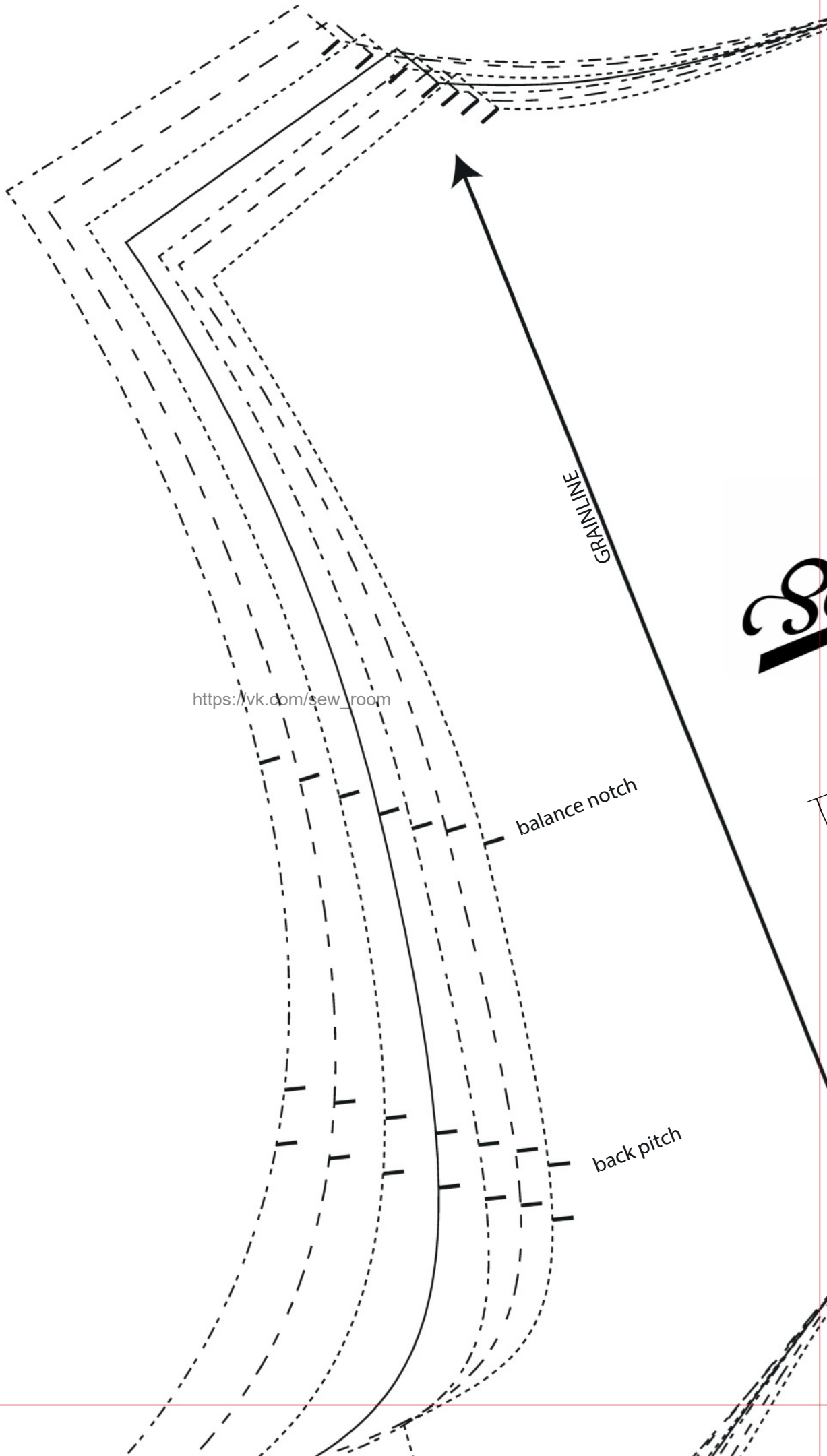
Cut one on fold

<https://vk.com/sewingroom>

folded hem point

double turn and stitch on hem





https://vk.com/sew_room

balance notch

back pitch

GRAINLINE

130

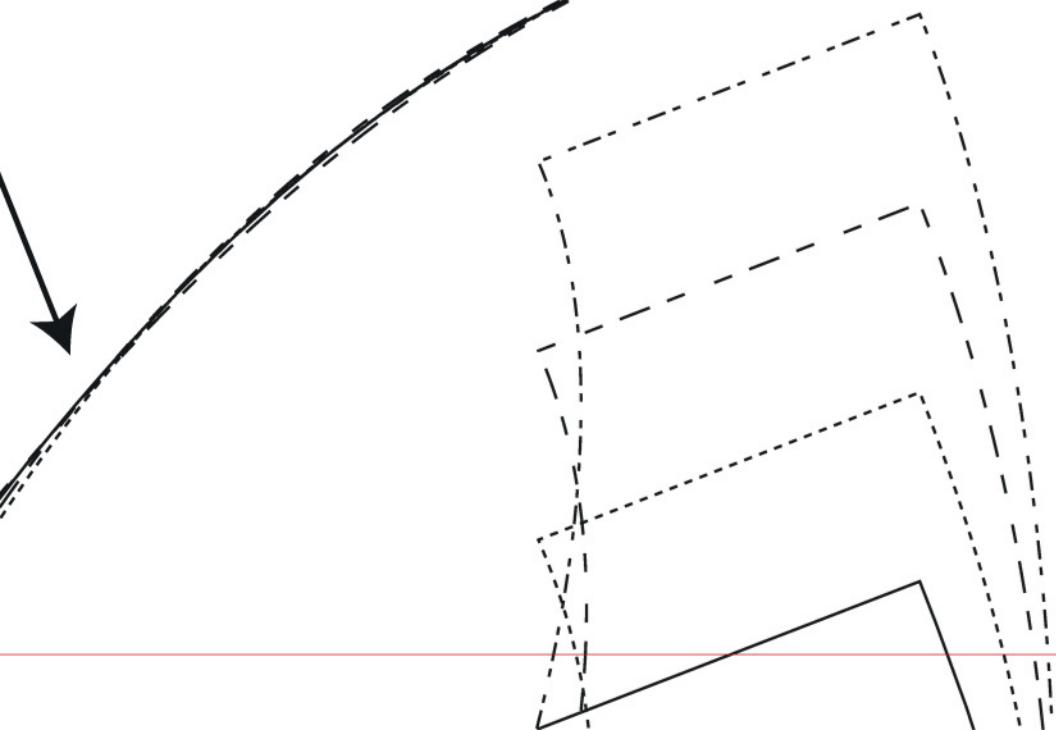
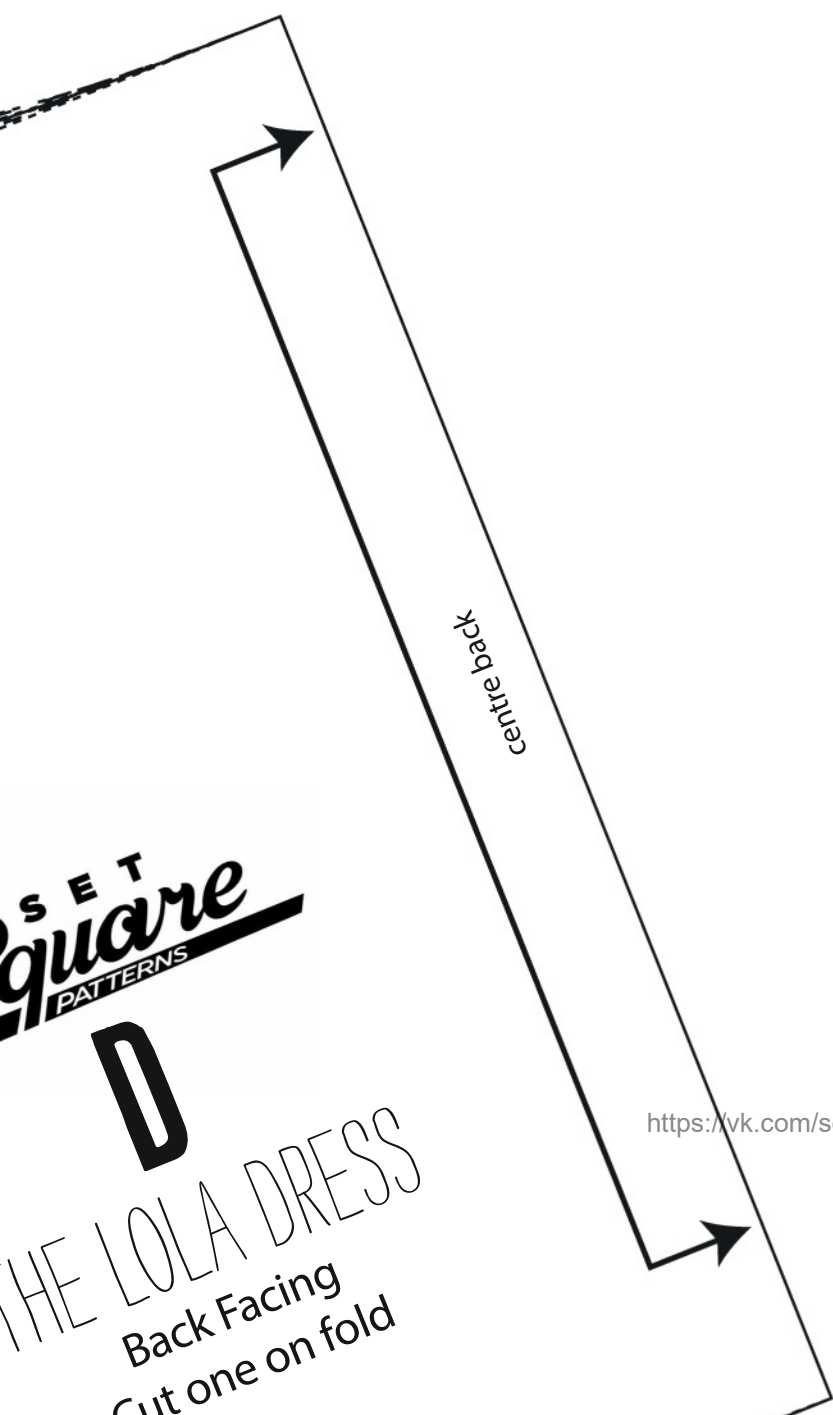
SET
square
PATTERNS

D

THE LOLA DRESS
Back Facing
Cut one on fold

centre back

https://vk.com/sew_room



Simply Sewing
FRESH IDEAS WITH FABRIC

SET Square PATTERNS

WWW.GATHERED.HOW/SIMPLYSEWING INSTAGRAM@SETSQUAREPATTERNS

© Printed in the UK for *Simply Sewing* magazine. Design by Carla Diogo. Supplied by Our Media Ltd (an Immediate Group Company), Bristol, BS1 4ST. To be used for individual, private home use only and not for commercial or manufacturing purposes. Not for resale.

SIDE 3 OF 4

Pattern sheets are printed double sided – you'll need to trace your pattern pieces onto pattern paper rather than cutting out directly from this sheet. Find our guide to pattern tracing at gathered.how/tracing-patterns. Scan the QR code to head to that page.

SIZE KEY

XS - - - - -
S - - - - -
M - - - - -
L - - - - -
XL - - - - -
XXL - - - - -
XXXL - - - - -



https://vk.com/sew_room

TEST SQUARE

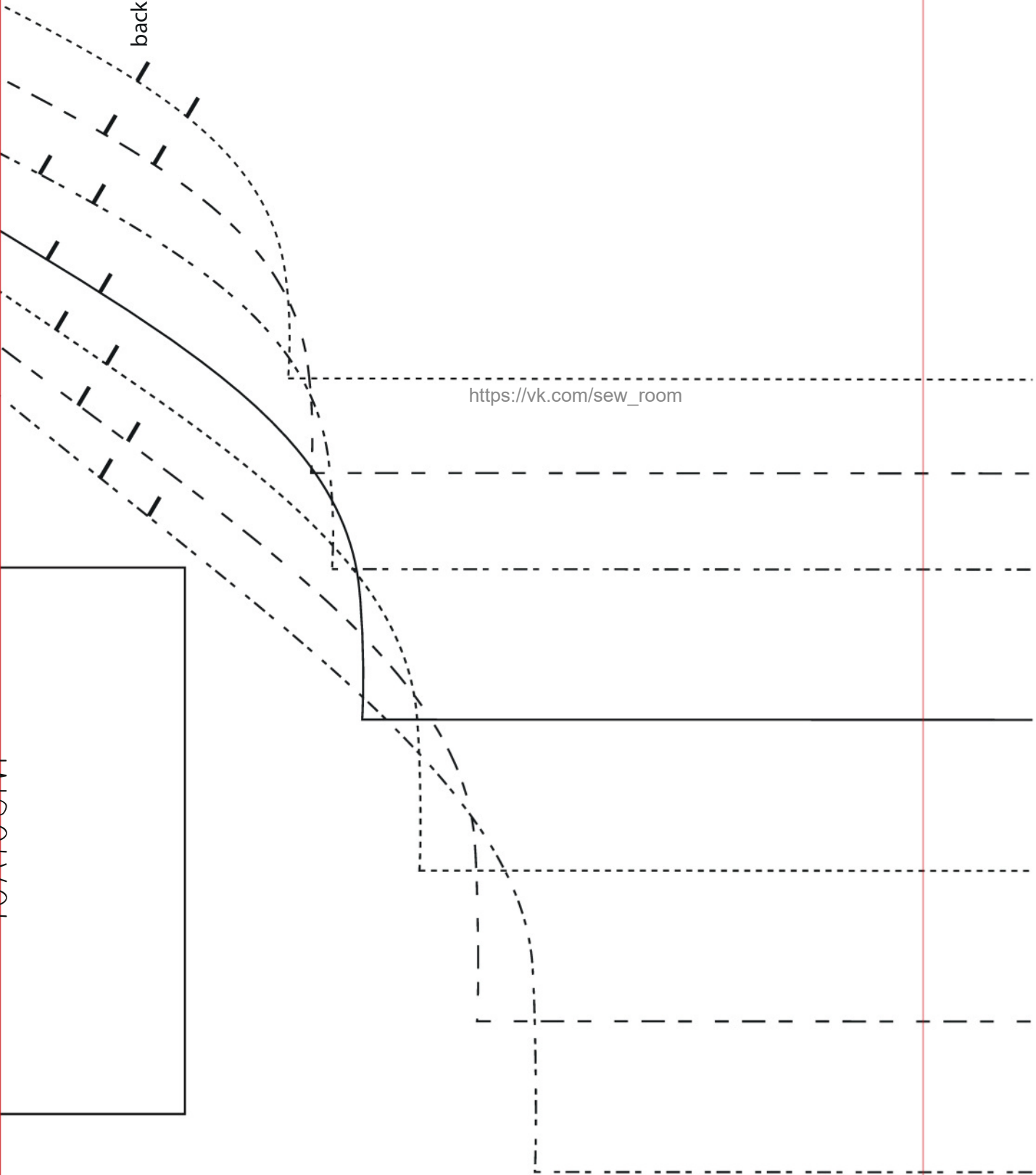
10X10CM

balance notch



(Join t

back pitch

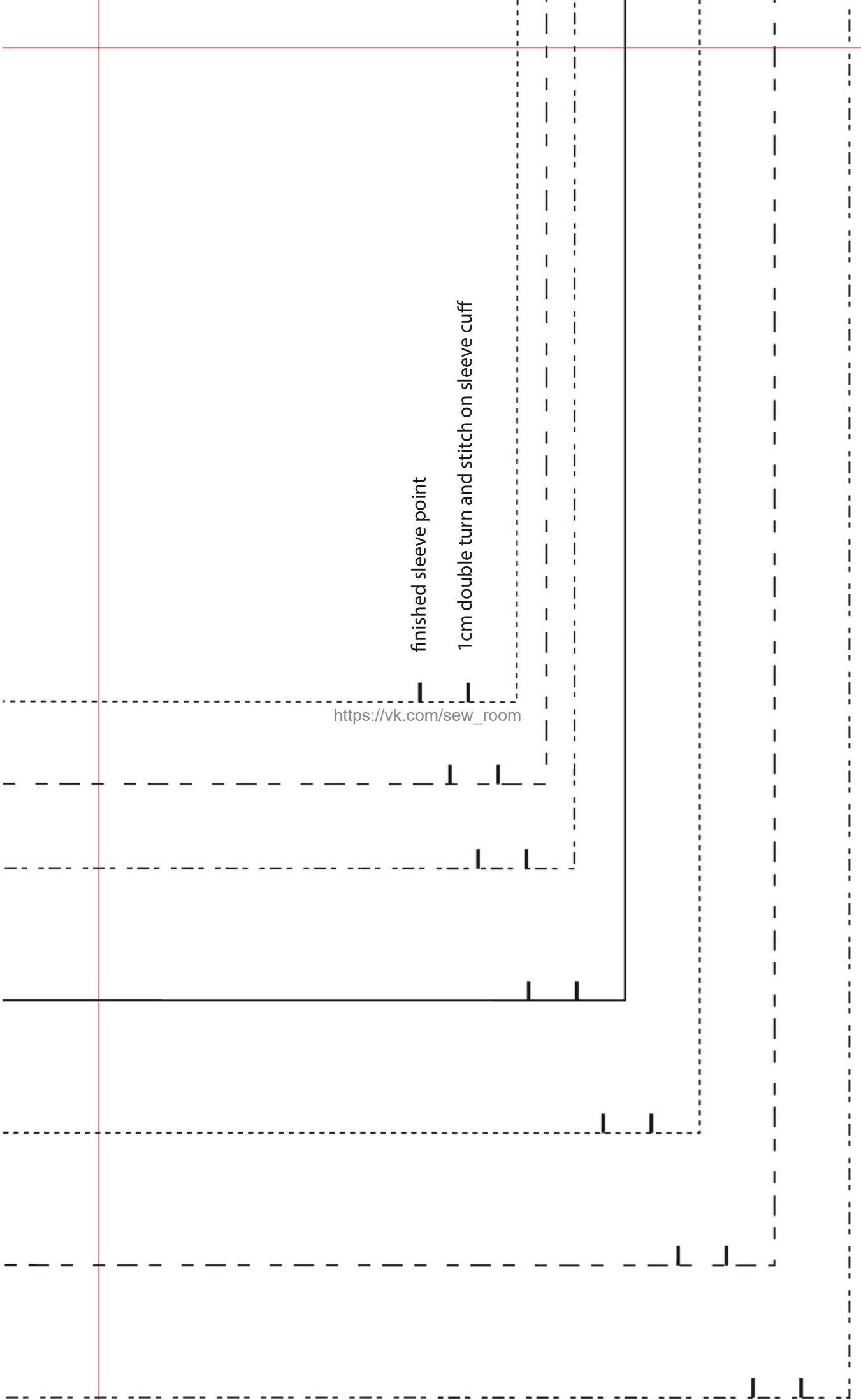


https://vk.com/sew_room

finished sleeve point

1cm double turn and stitch on sleeve cuff

https://vk.com/sew_room





SE T
Square
PATTERNS

E

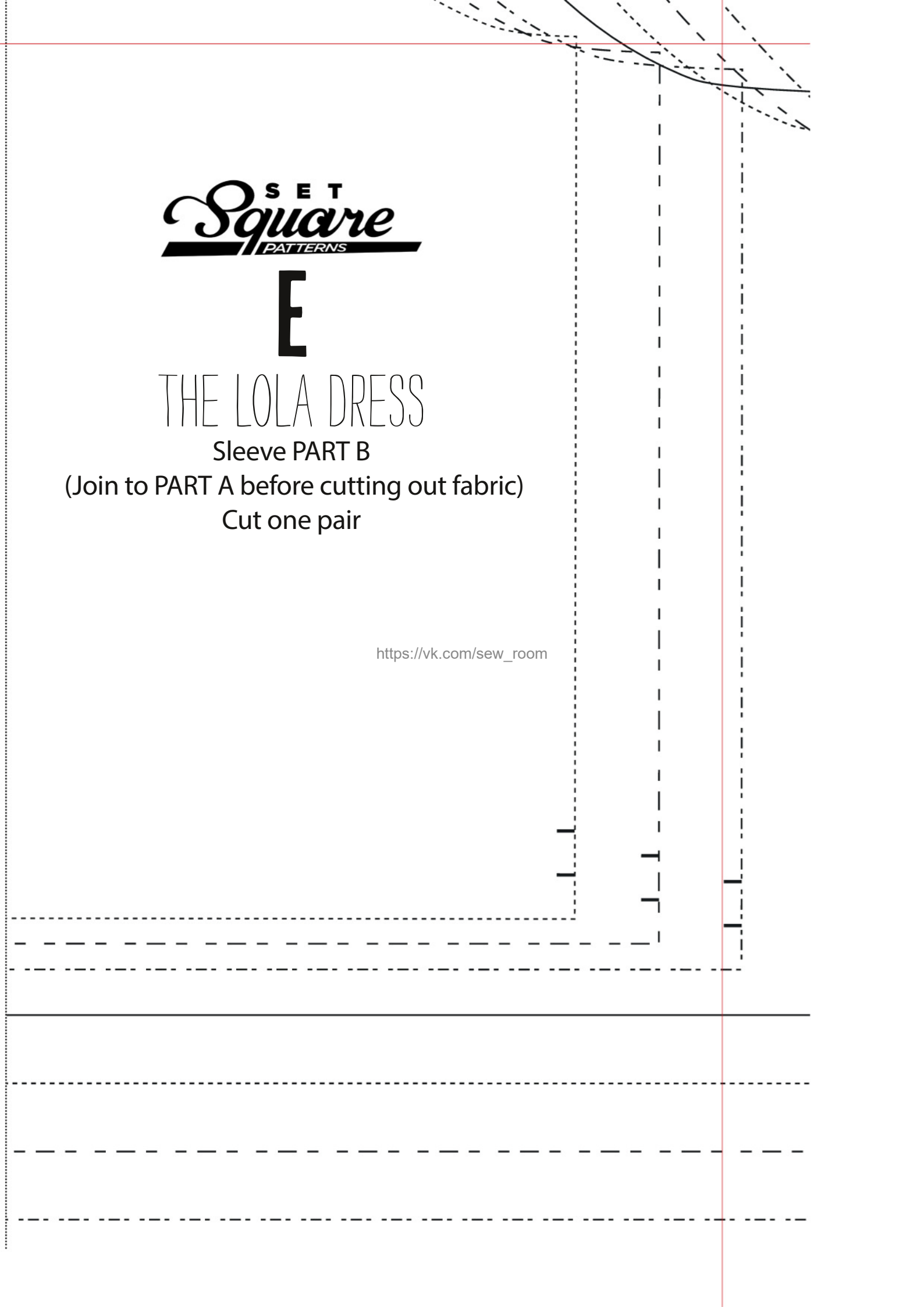
THE LOLA DRESS

Sleeve PART B

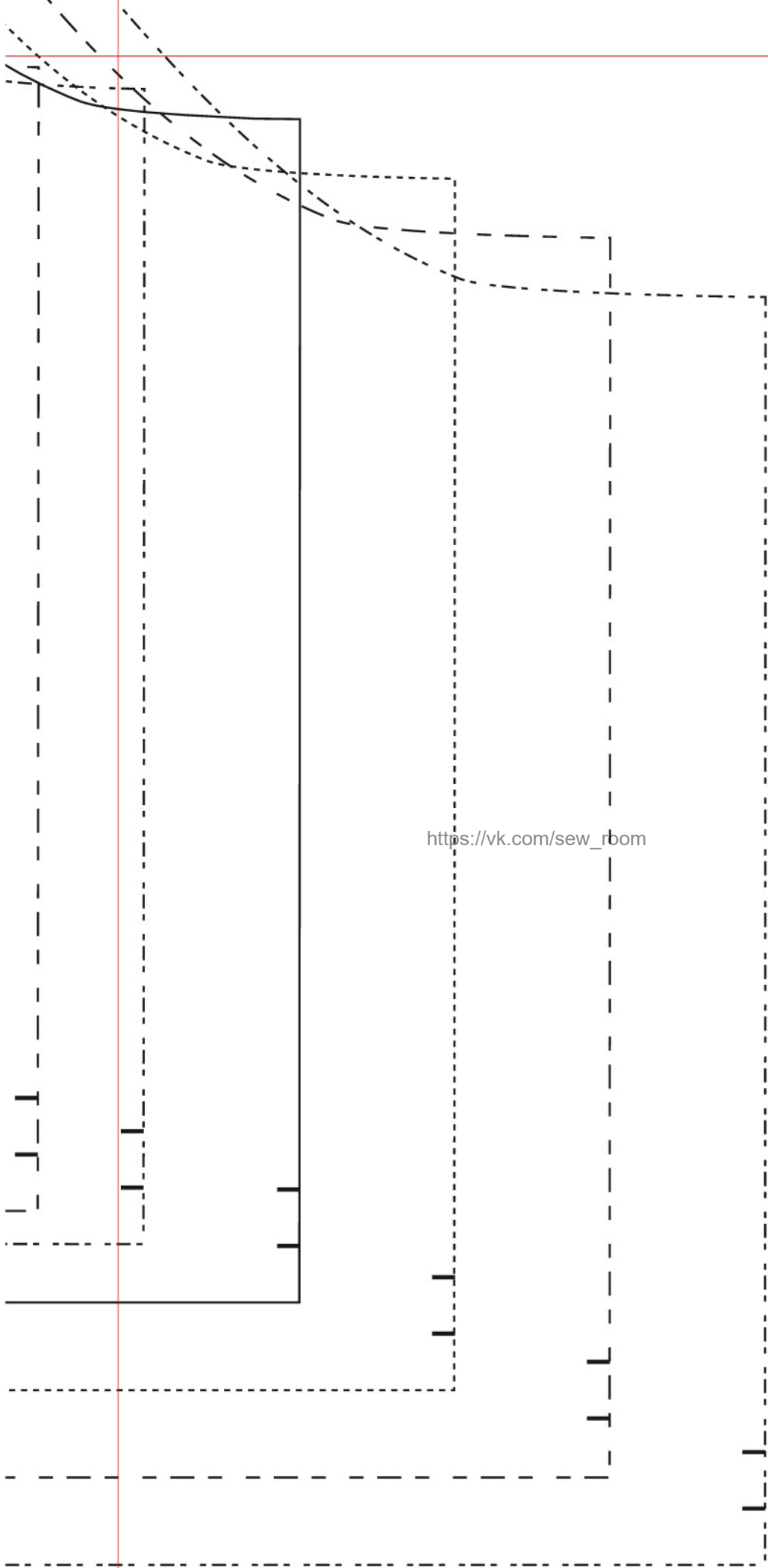
(Join to PART A before cutting out fabric)

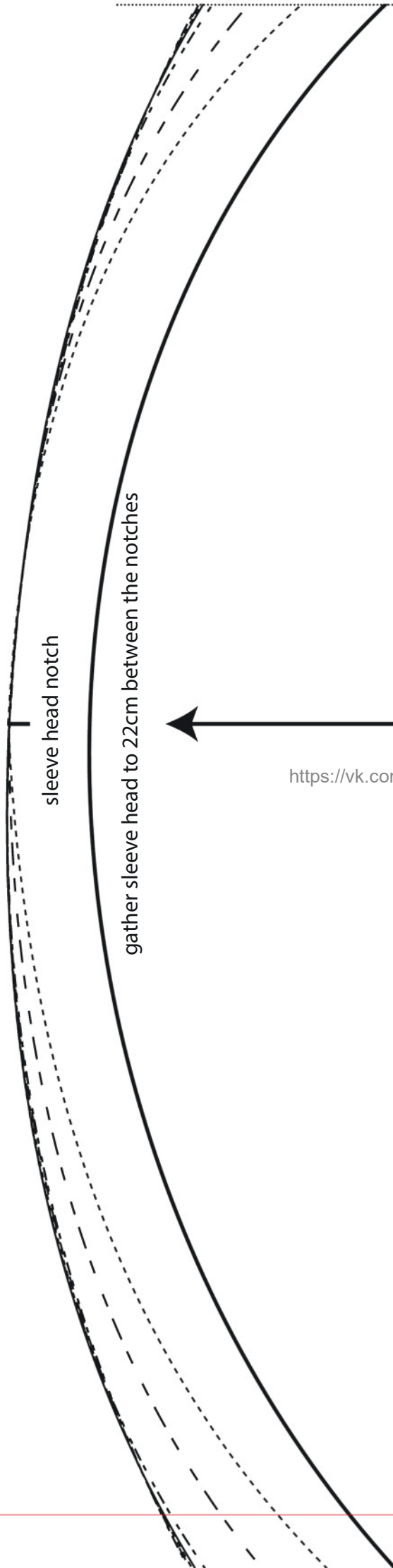
Cut one pair

https://vk.com/sew_room



https://vk.com/sew_room





sleeve head notch

gather sleeve head to 22cm between the notches

https://vk.com/sew_room

GRAINLINE



E

THE LOLA DRESS

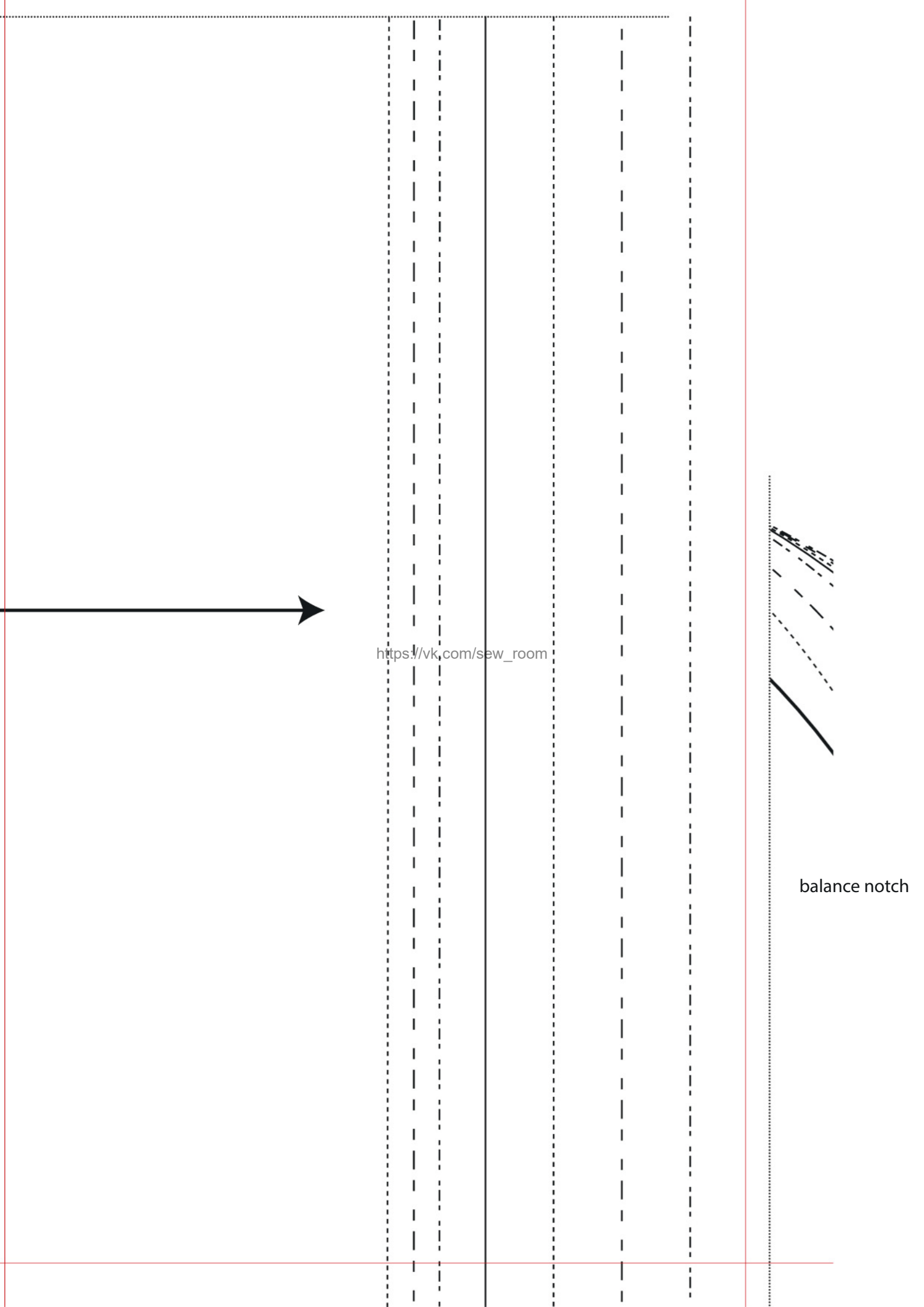
Sleeve PART A

(Join to PART B before cutting out fabric)

Cut one pair

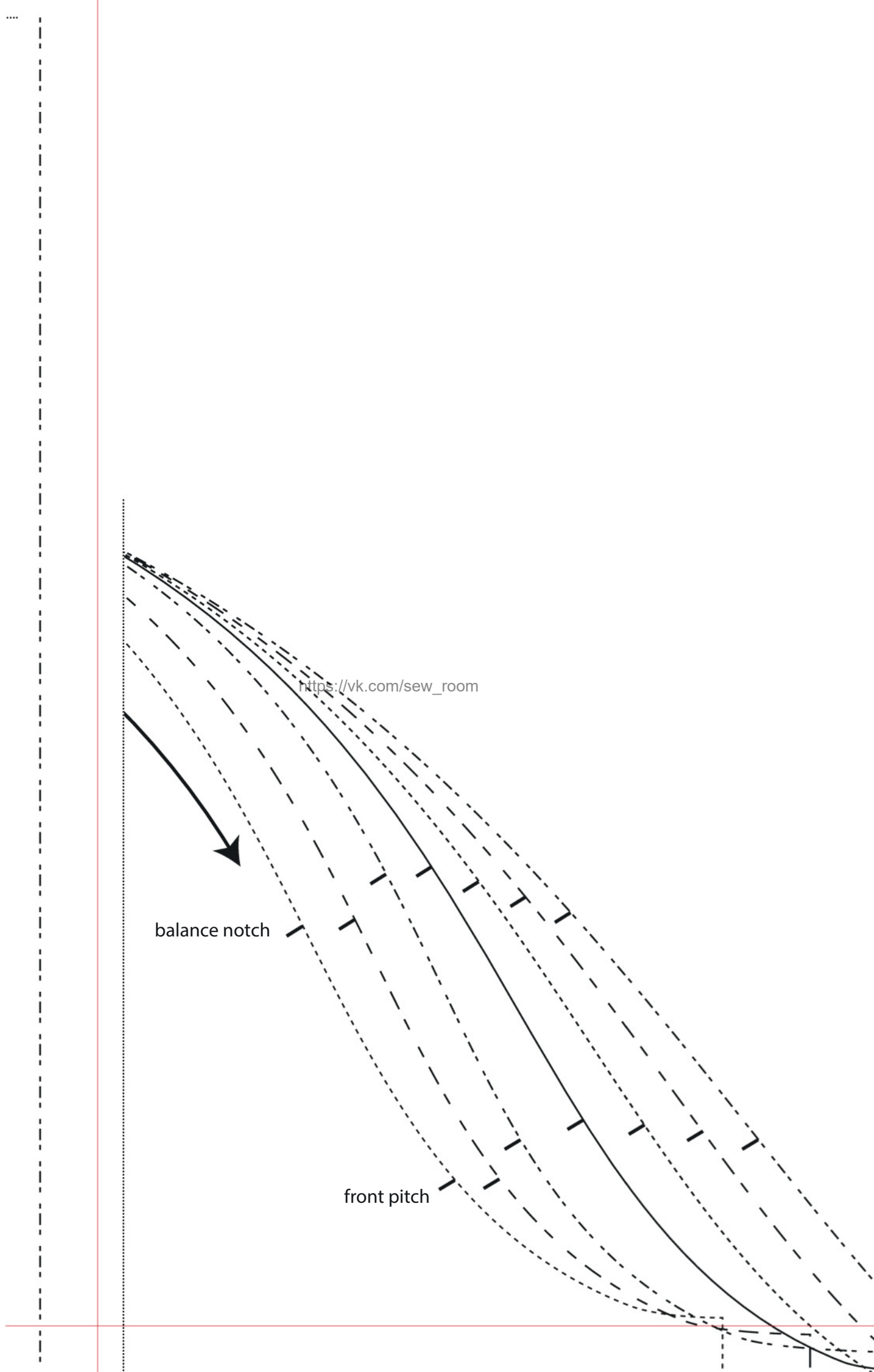
https://vk.com/sew_room

GRAINLINE



https://vk.com/sew_room

balance notch



https://vk.com/sew_room

balance notch

front pitch

https://vk.com/sew_room

© Printed in the UK for *Simply Sewing* magazine. Design by Carla Diogo. Supplied by Our Media Ltd (an Immediate Group Company), Bristol, BS1 4ST. To be used for individual, private home use only and not for commercial or manufacturing purposes. Not for resale.

SIDE 4 OF 4

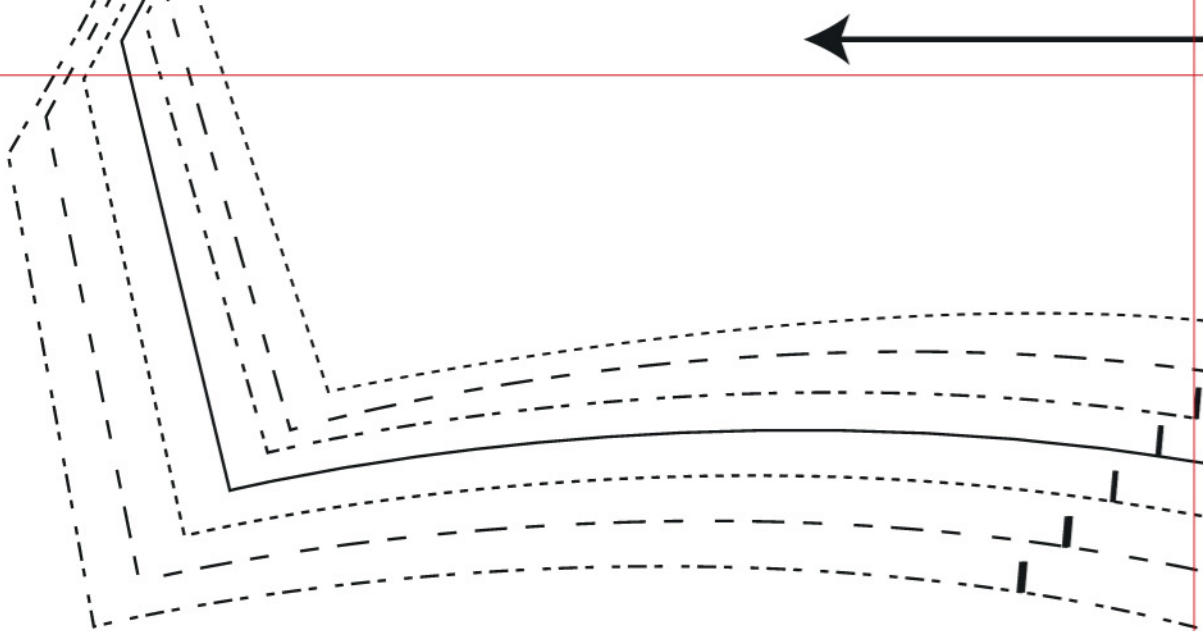
Pattern sheets are printed double sided – you'll need to trace your pattern pieces onto pattern paper rather than cutting out directly from this sheet. Find our guide to pattern tracing at gathered.how/tracing-patterns. Scan the QR code to head to that page.

SIZE KEY

XS -----
S -----
M -----
L -----
XL -----
XXL -----
XXXL -----

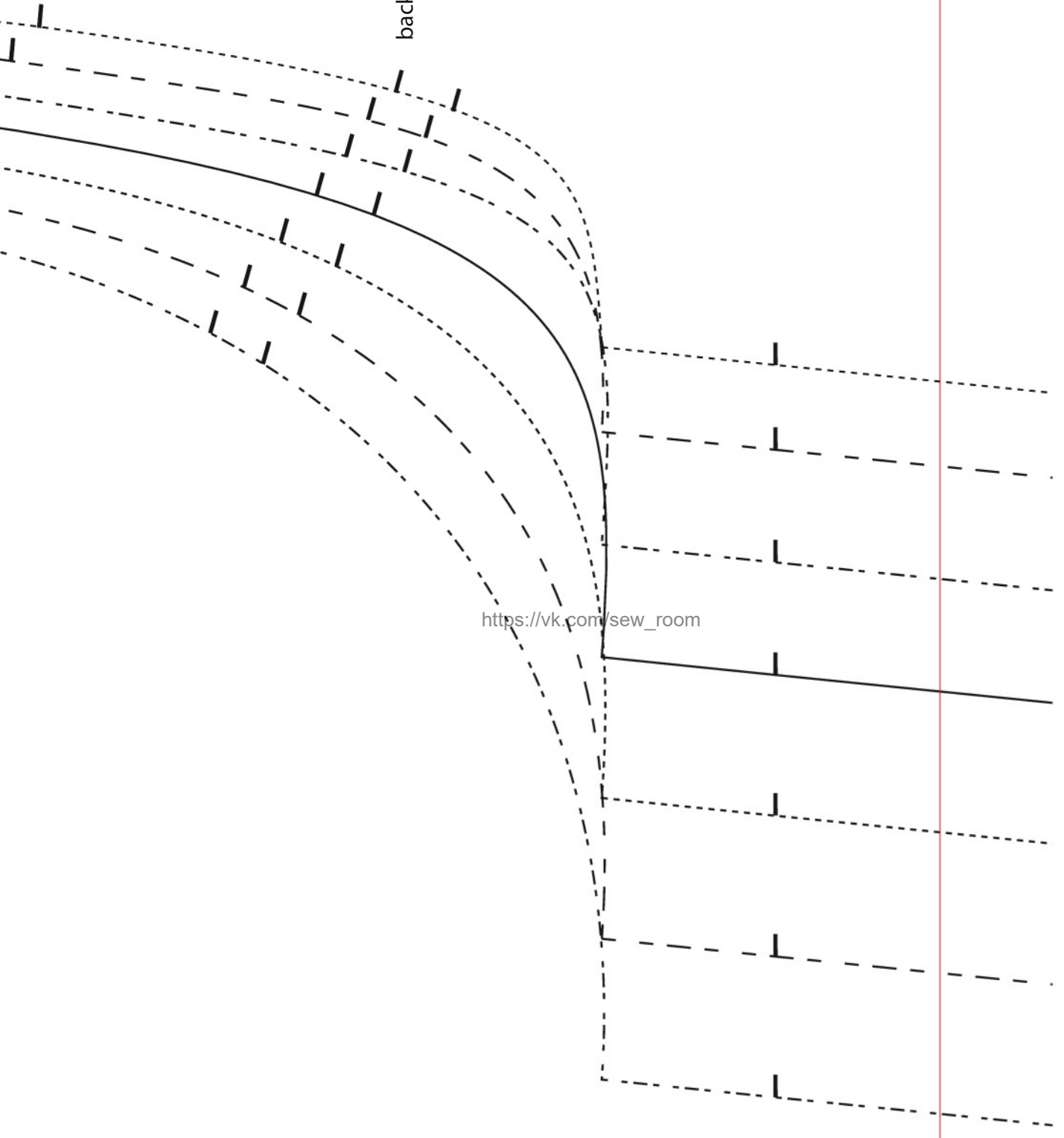


https://vk.com/sew_room



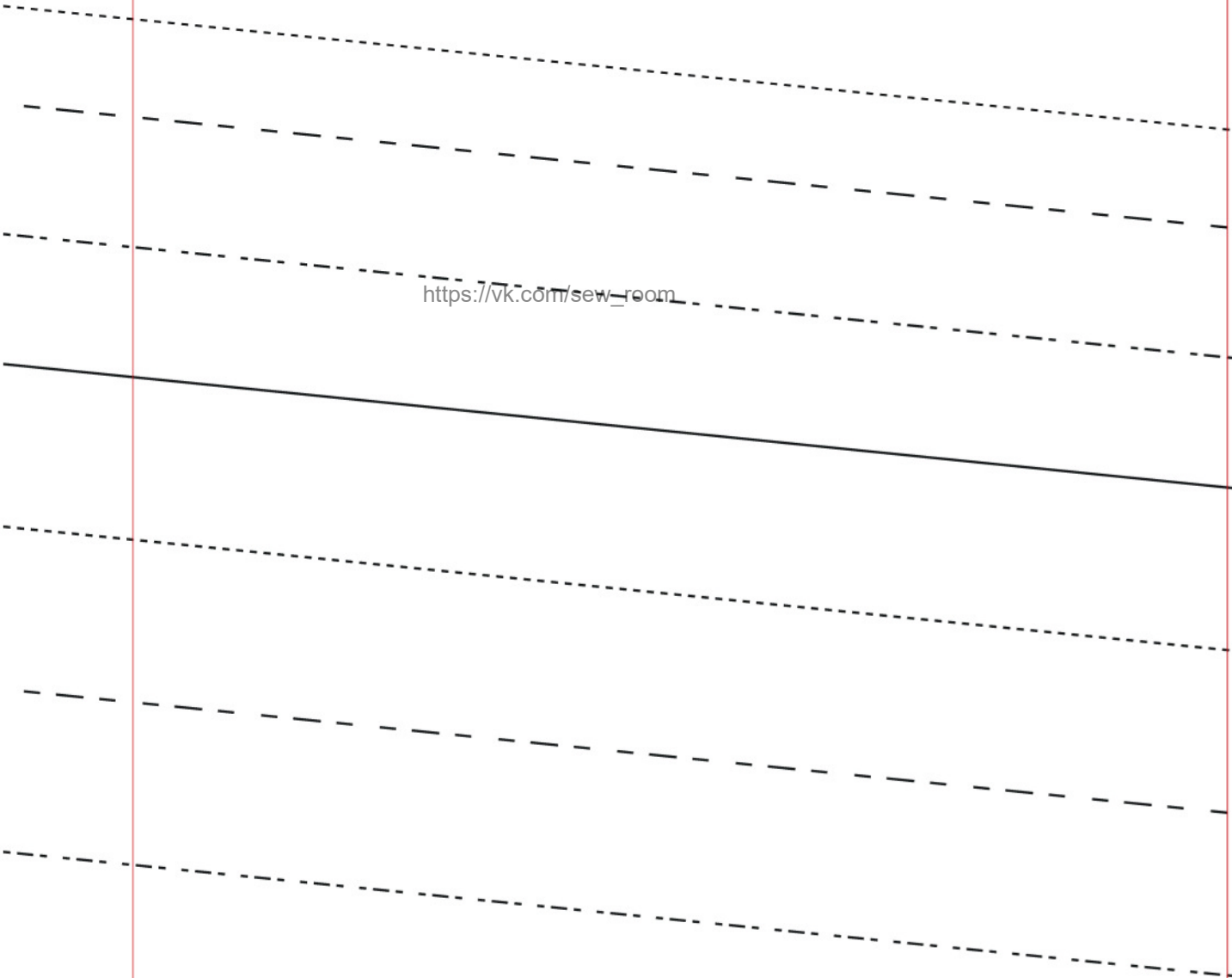
balance notch

back pitch

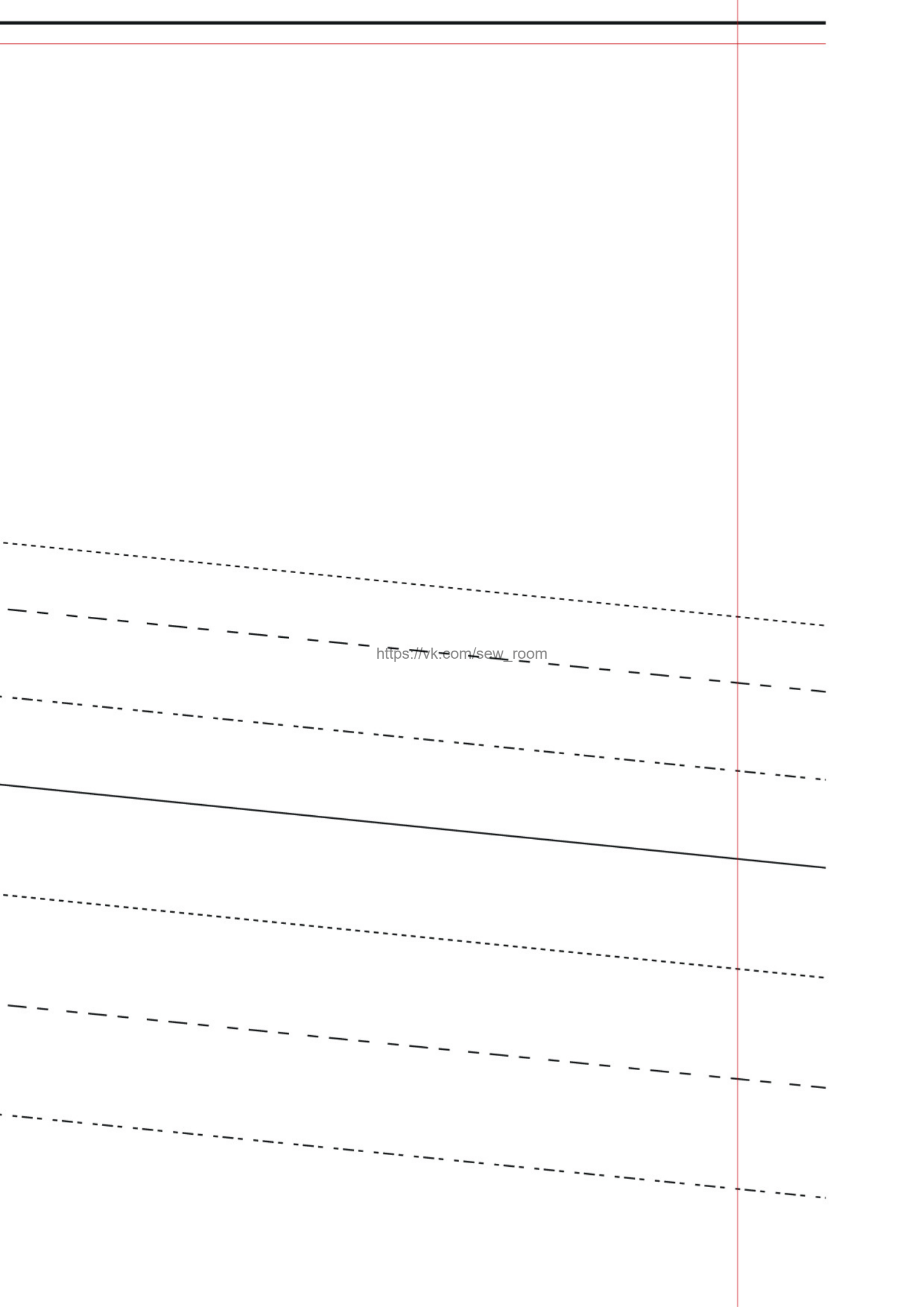


https://vk.com/sew_room

)



https://vk.com/sew_room



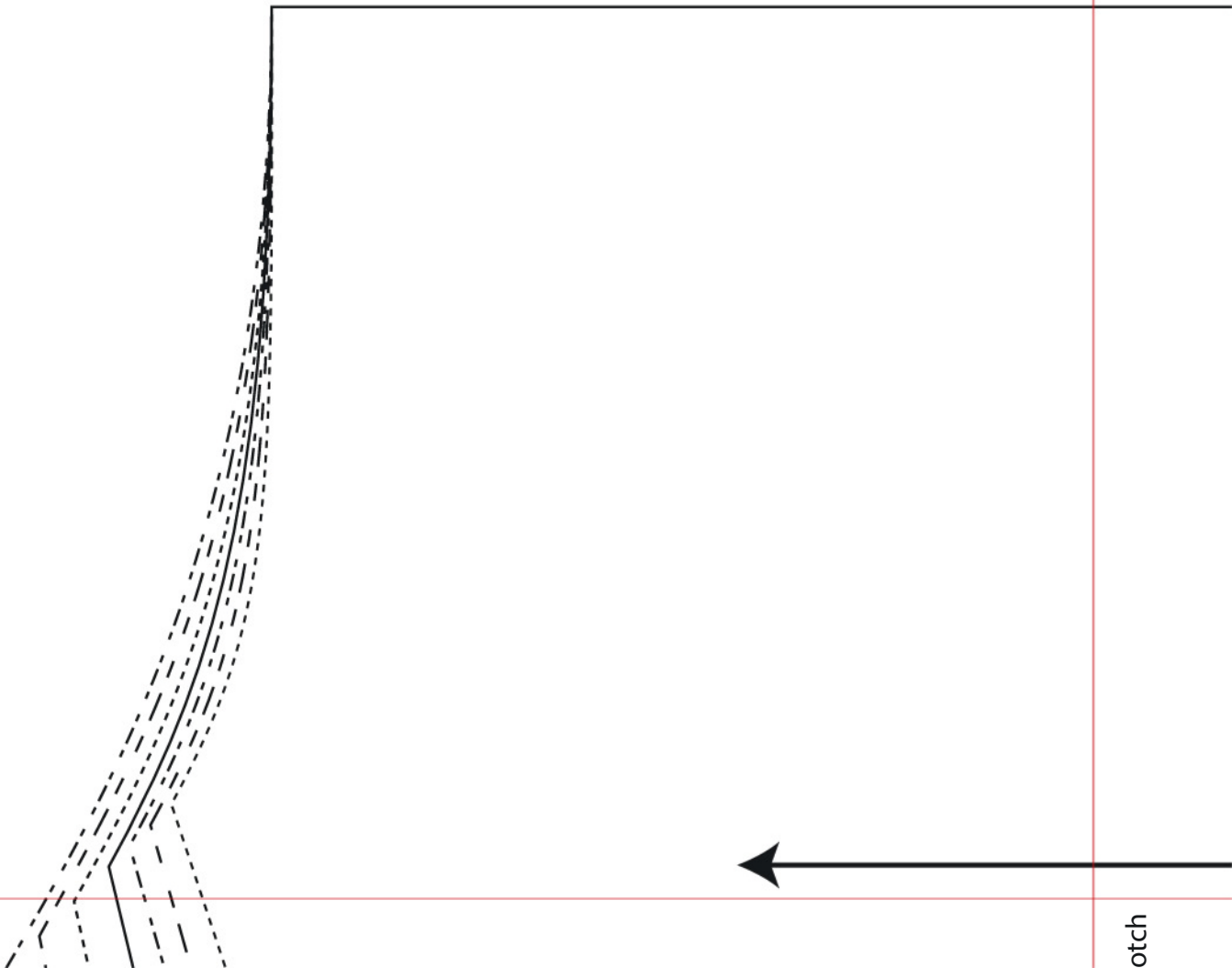
https://vk.com/sew_room

<https://vk.com/sew-room>

TEST SQUARE

10X10CM

https://vk.com/sew_room



otch

https://vk.com/sew_room



S E T
Southern

otch

B

THE LOLA DRESS

Back PART A

(Join to PART B before cutting out fabric)

Cut one on fold

GRAINLINE

centre back

https://vk.com/sew_room

https://vk.com/sew_room

https://vk.com/sew_room

PSST:

Turn the page for fabric and styling inspiration. Share your Lola Dress with us using #SimplySewingMag.

https://www.com/sew_boom



https://vk.com/sew_room

THE LOLA DRESS

Sew a cute holiday staple with this

breezy skill-boosting design from Carla
Diogo of **Set Square Patterns**



THE LOLA DRESS

Bold prints and patterns in a breezy linen paired with fun, puffy sleeves make the Lola Dress the epitome of summer for us! Make sure you pack it in your suitcase if you're off on holiday, or keep it at the front of your wardrobe for garden parties and picnics. This design is from Carla Diogo of Set Square Patterns. Carla occasionally runs workshops for this dress, so be sure to follow her on Instagram @setsquarepatterns for more!

YOU WILL NEED

- Fabric: 3mx140cm or 3mx150cm
- Iron-on midweight woven interfacing: 50x90cm
- Bias binding: 3m
- Elastic, 5mm wide: 1m
- Matching thread
- Basic sewing kit

NOTES

- Seam allowance is 1cm; 5mm at front and back neckline; and 3cm at the hem.
- Press seams open as you go. For overlocked, French or bound seams, press towards the back.
- Make sure to interface your facings or use fusing tape around the neckline.
- Practice makes perfect, always make a toile before making your final garment.
- Dress length from the highest point of the shoulder when worn is 100cm and 110cm for the longer version.
- Our model is 5'6" tall.

RECOMMENDED FABRICS

- Medium- to lightweight woven fabrics such as 100% linen, linen mix, Tencel, Tencel lawn, cotton and cotton broderie anglaise.

FABRICS USED

- Dress A: Minerva Exclusive Monstera Street viscose challis, minerva.com
- Dress B: Minerva Core Range enzyme-washed 100% linen in Coral, minerva.com

Take this style through the seasons by extending the sleeves and skirt.

TOP FORM

A square neckline and gathered sleeves give this dress plenty of interest.

https://vk.com/sew_room

MEASURING UP

Pick from two different lengths – or easily draft this to a midi or maxi dress.

