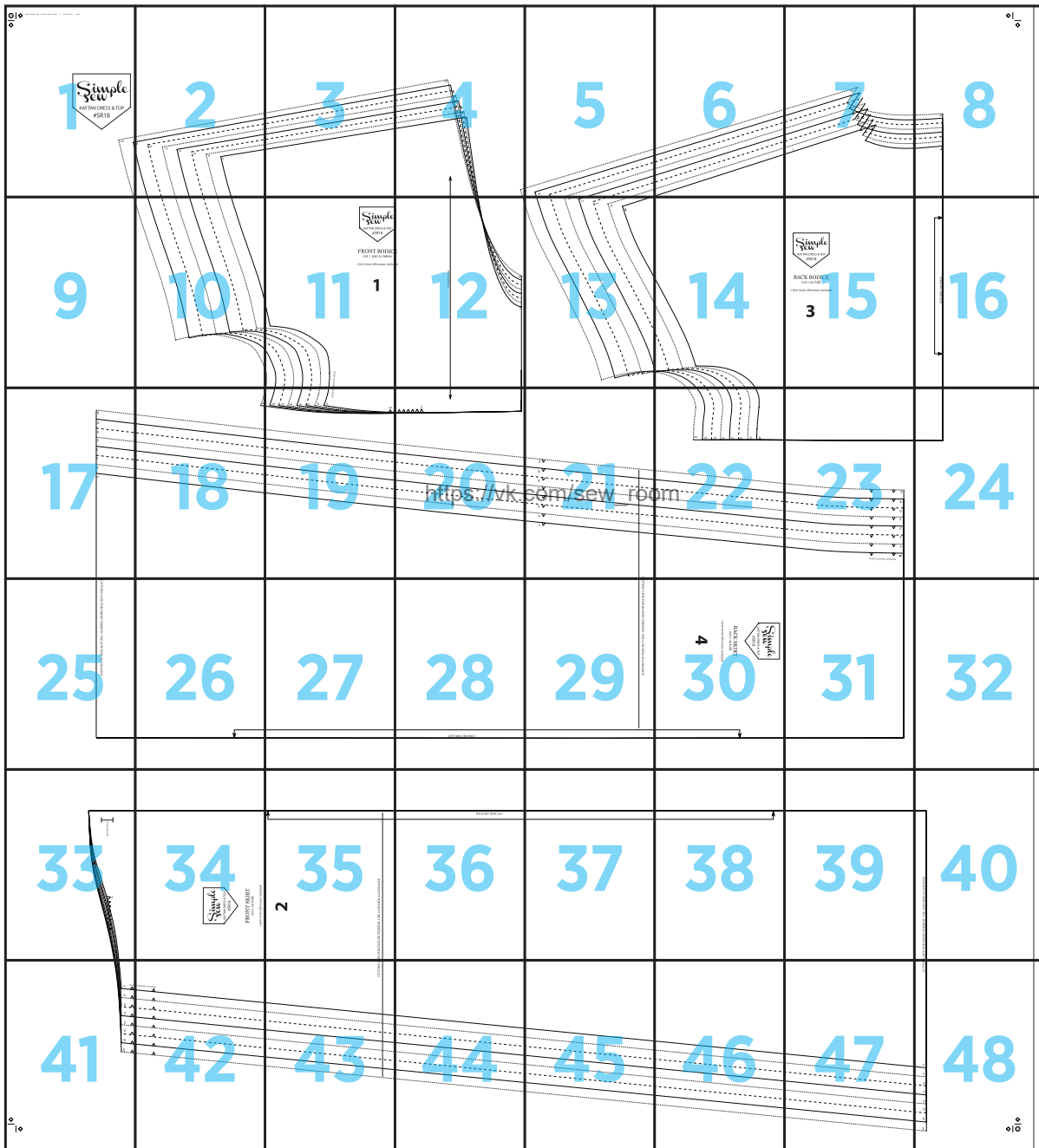
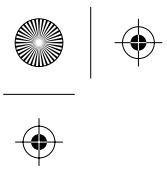


# Платье Островной бриз





[https://vk.com/sew\\_room](https://vk.com/sew_room)

*Sew*  
*sew*

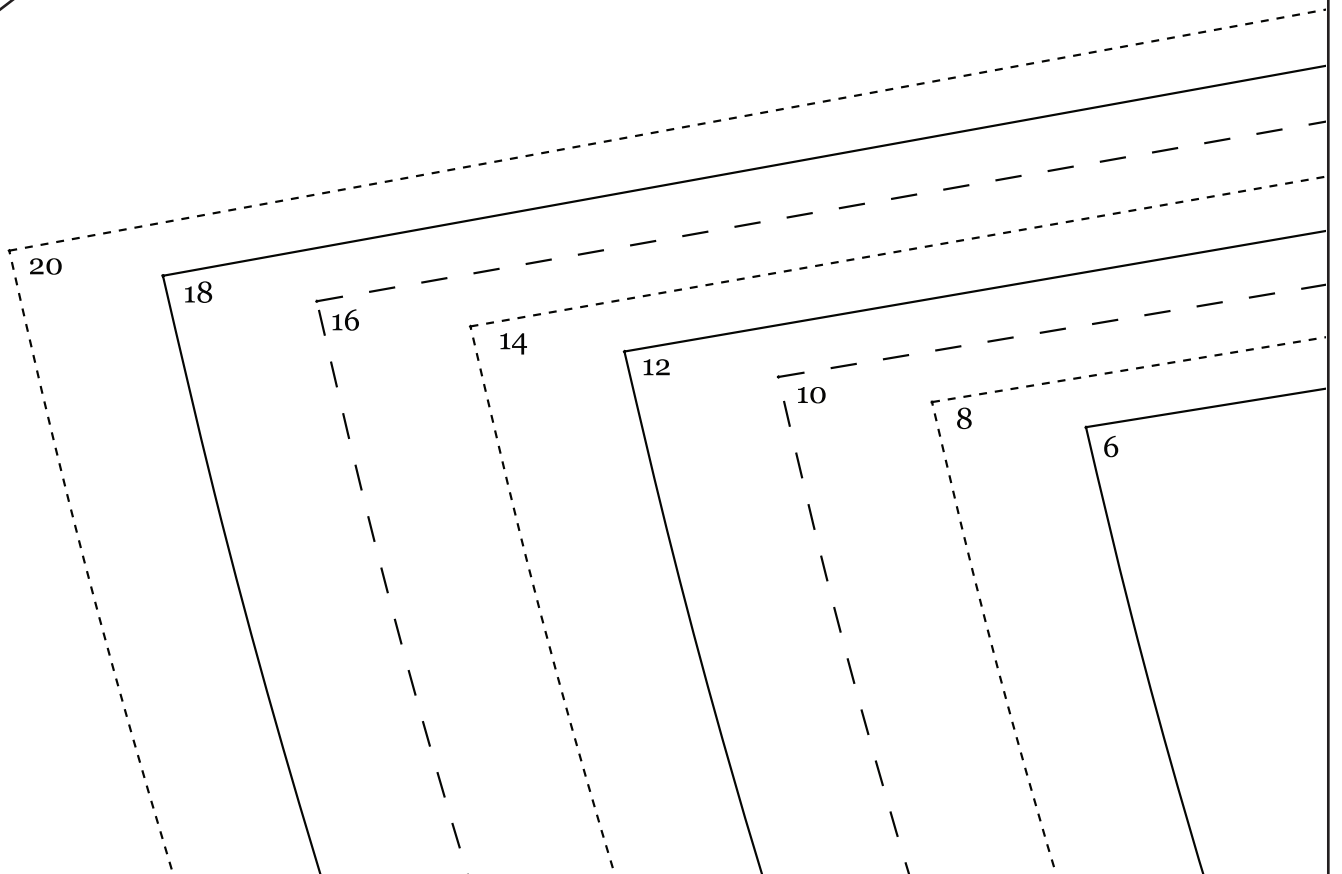
KAFTAN DRESS  
#SR18

2



ple  
& TOP

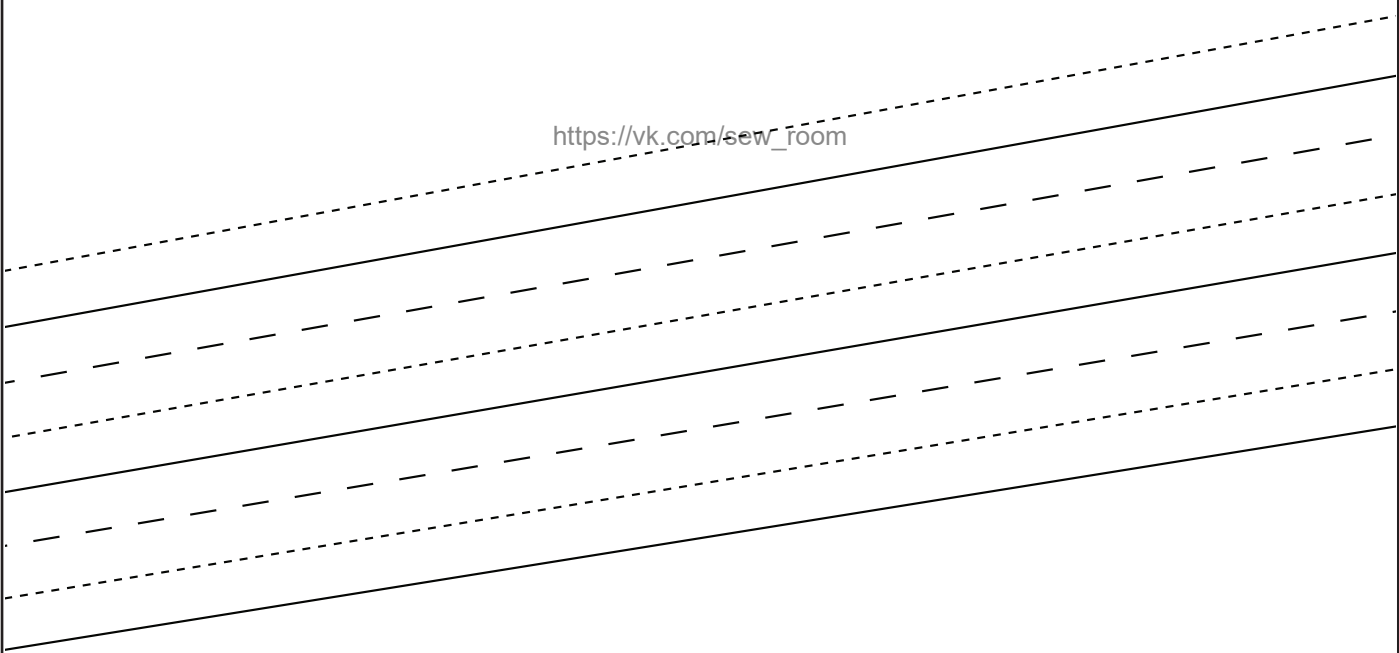
[https://vk.com/sew\\_room](https://vk.com/sew_room)



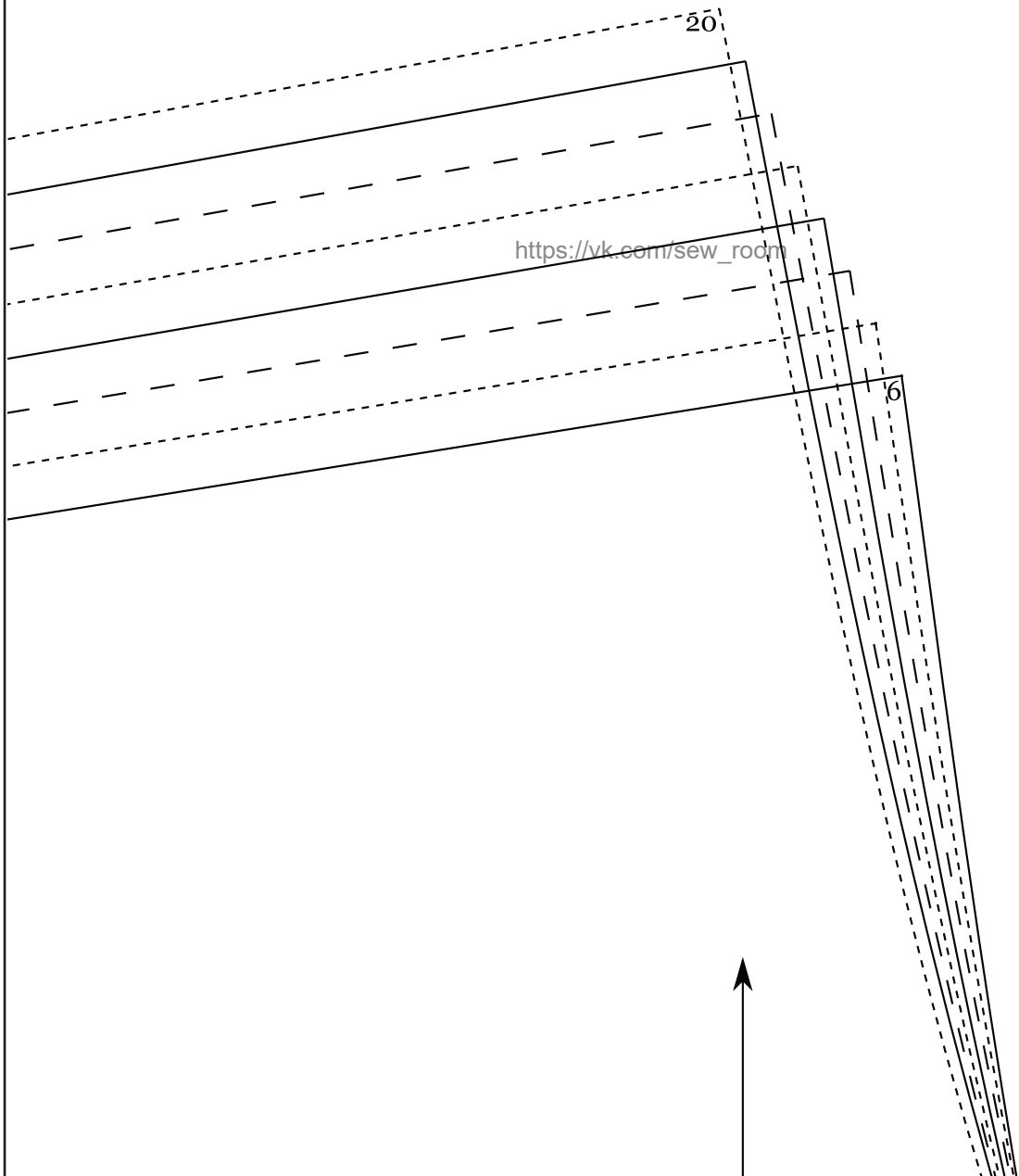
3



[https://vk.com/sew\\_room](https://vk.com/sew_room)



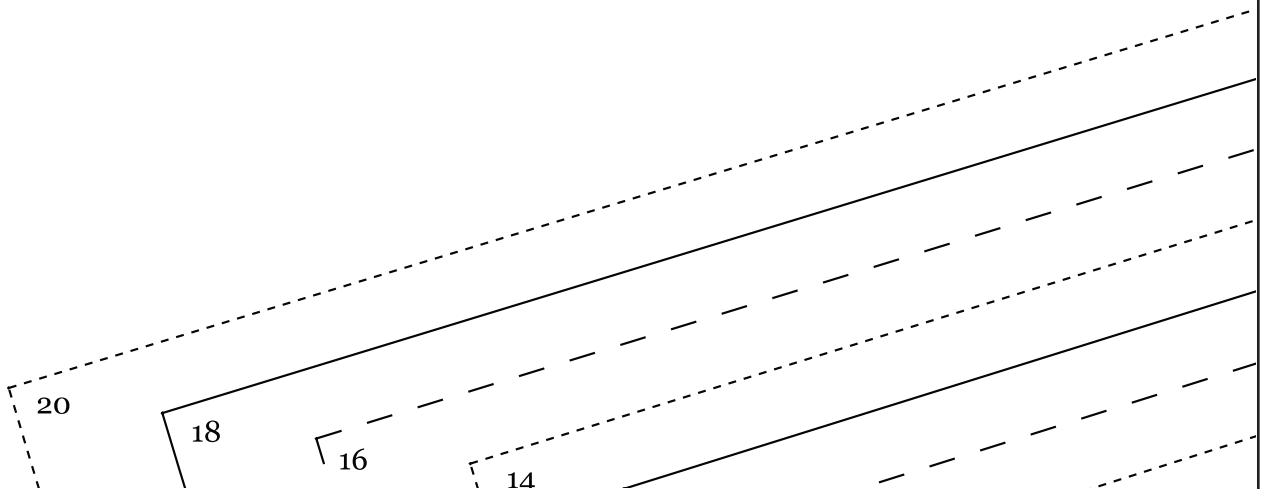
4



5



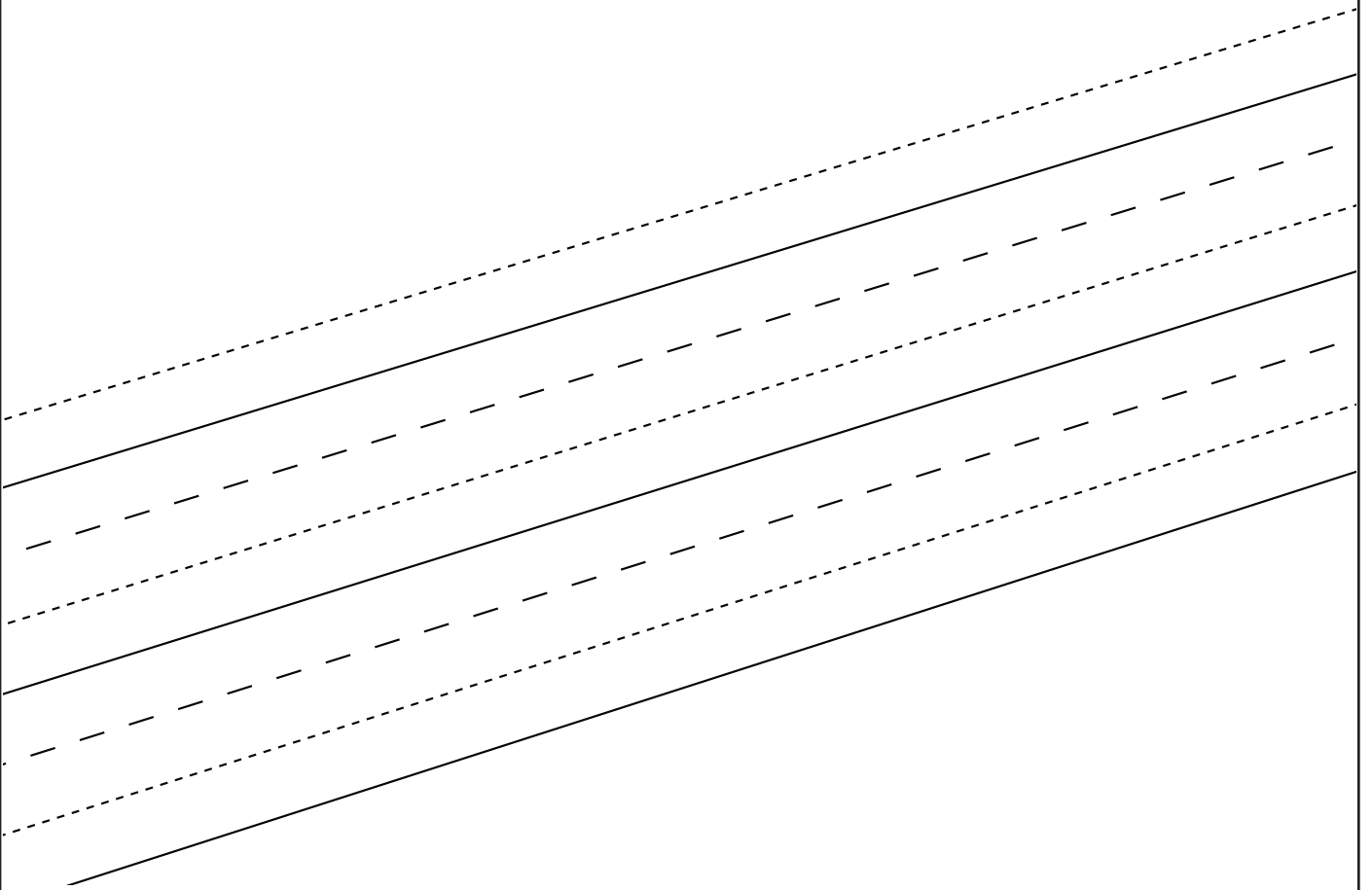
[https://vk.com/sew\\_room](https://vk.com/sew_room)



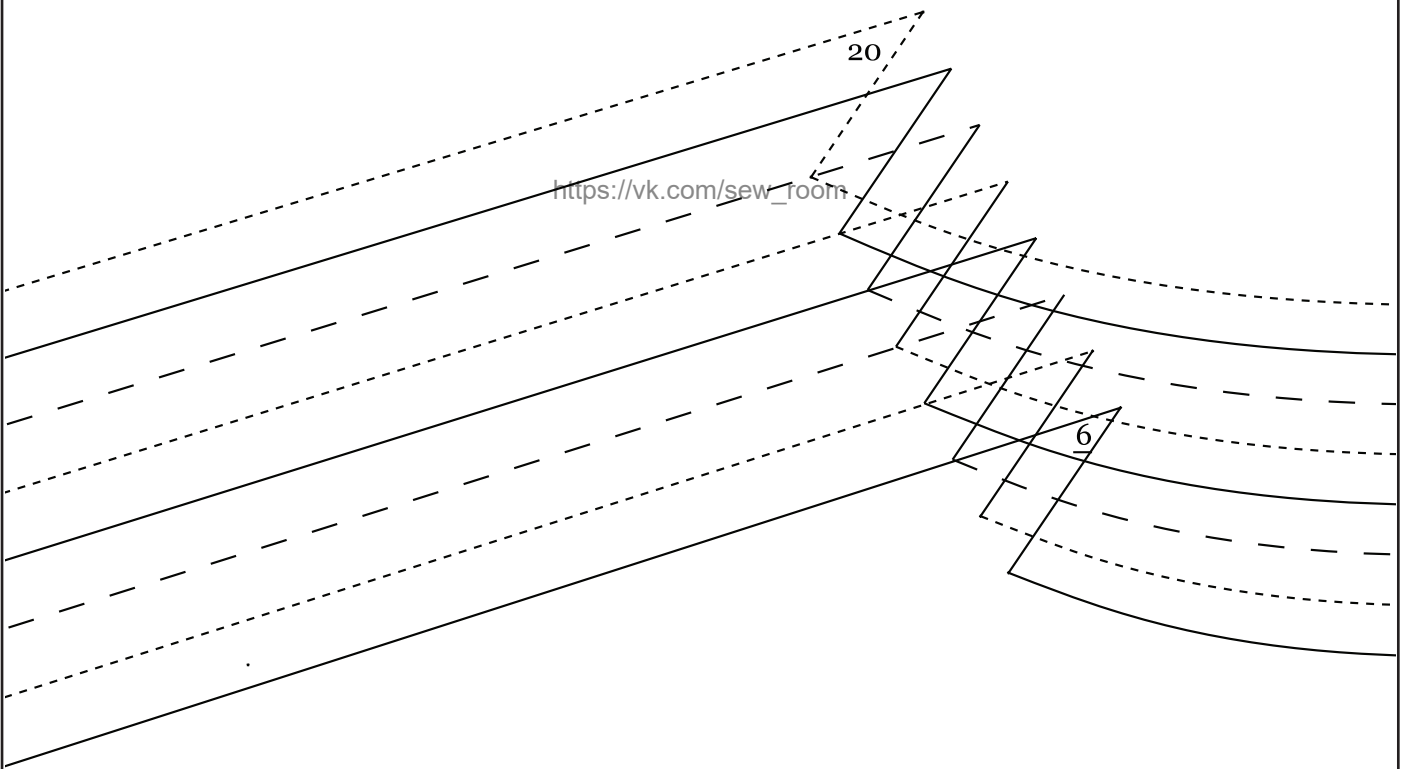
6



[https://vk.com/sew\\_room](https://vk.com/sew_room)

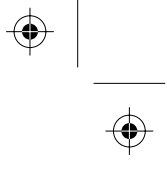


7

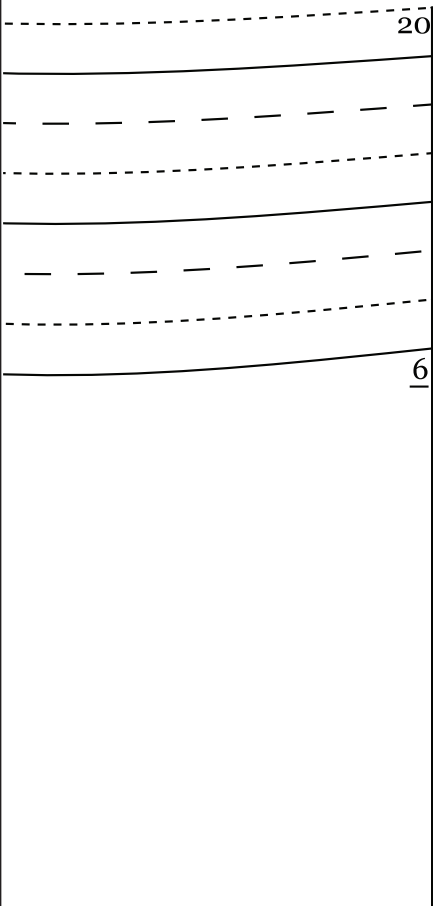




8



[https://vk.com/sew\\_room](https://vk.com/sew_room)





[https://vk.com/sew\\_room](https://vk.com/sew_room)

10



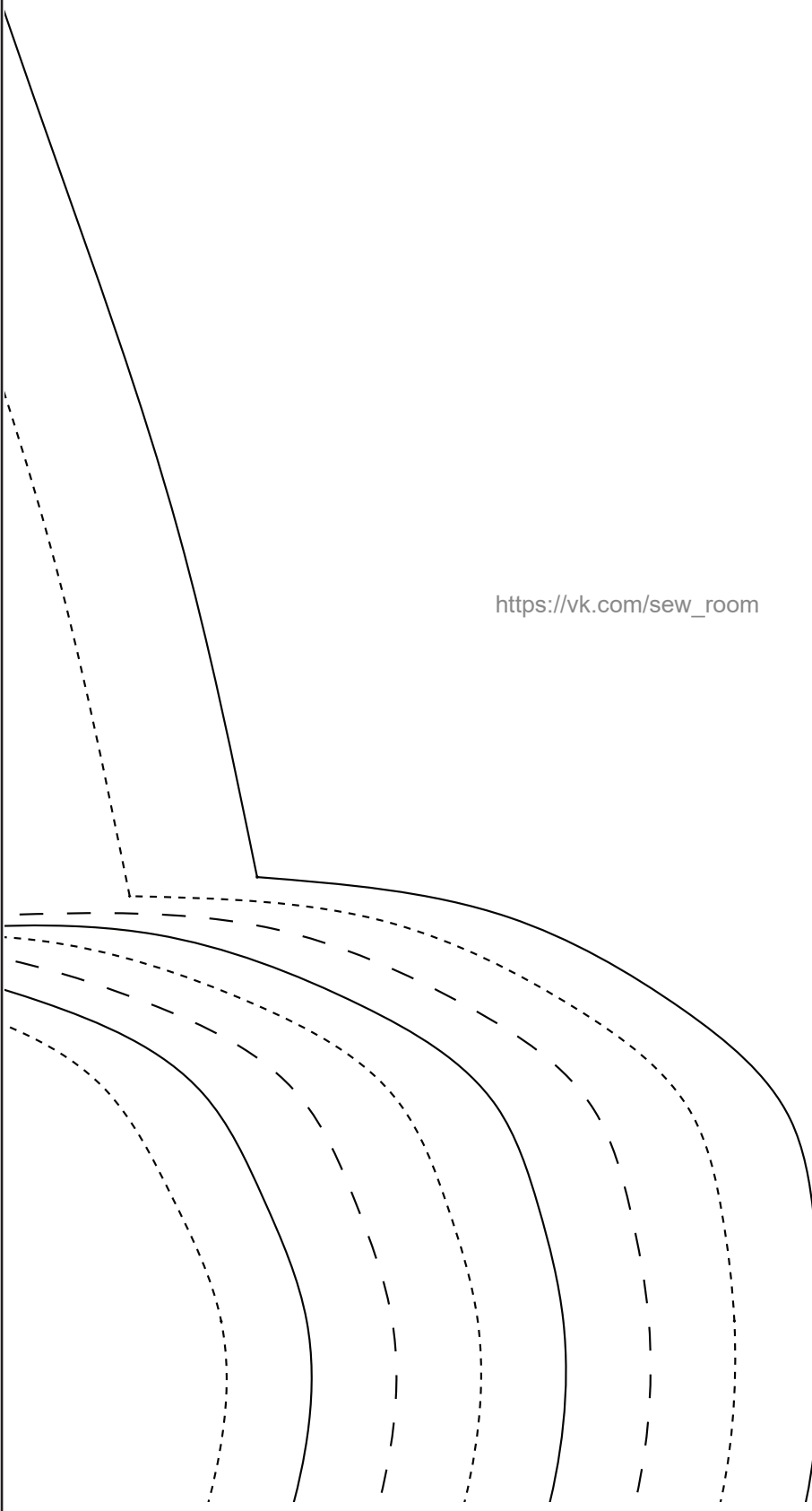
[https://vk.com/sew\\_room](https://vk.com/sew_room)



**FRONT**  
cut 1 pa  
1.5cm seam al

[https://vk.com/sew\\_room](https://vk.com/sew_room)

WAIST CHANNEL NOT



12

Simple Sew

DRESS & TOP  
SR18

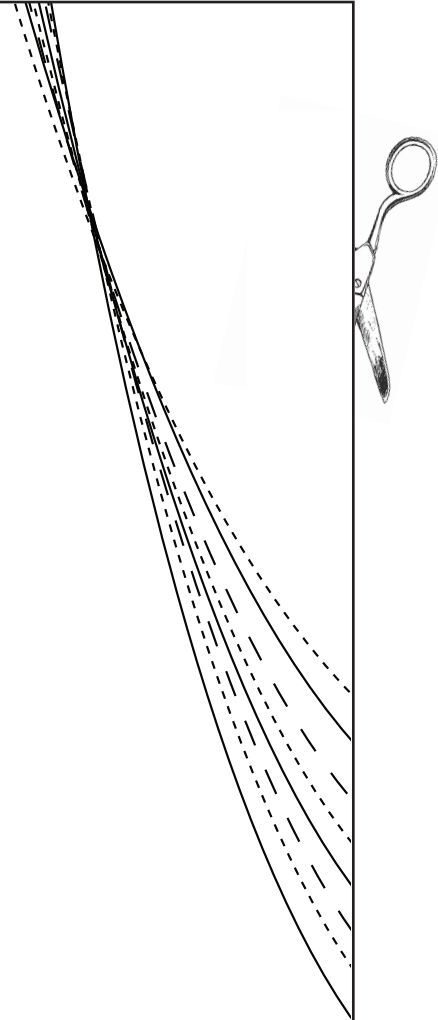
BODICE  
Cut in fabric

allowance included

1

Straight grain

[https://vk.com/sew\\_room](https://vk.com/sew_room)



13

12

10

8

6

20

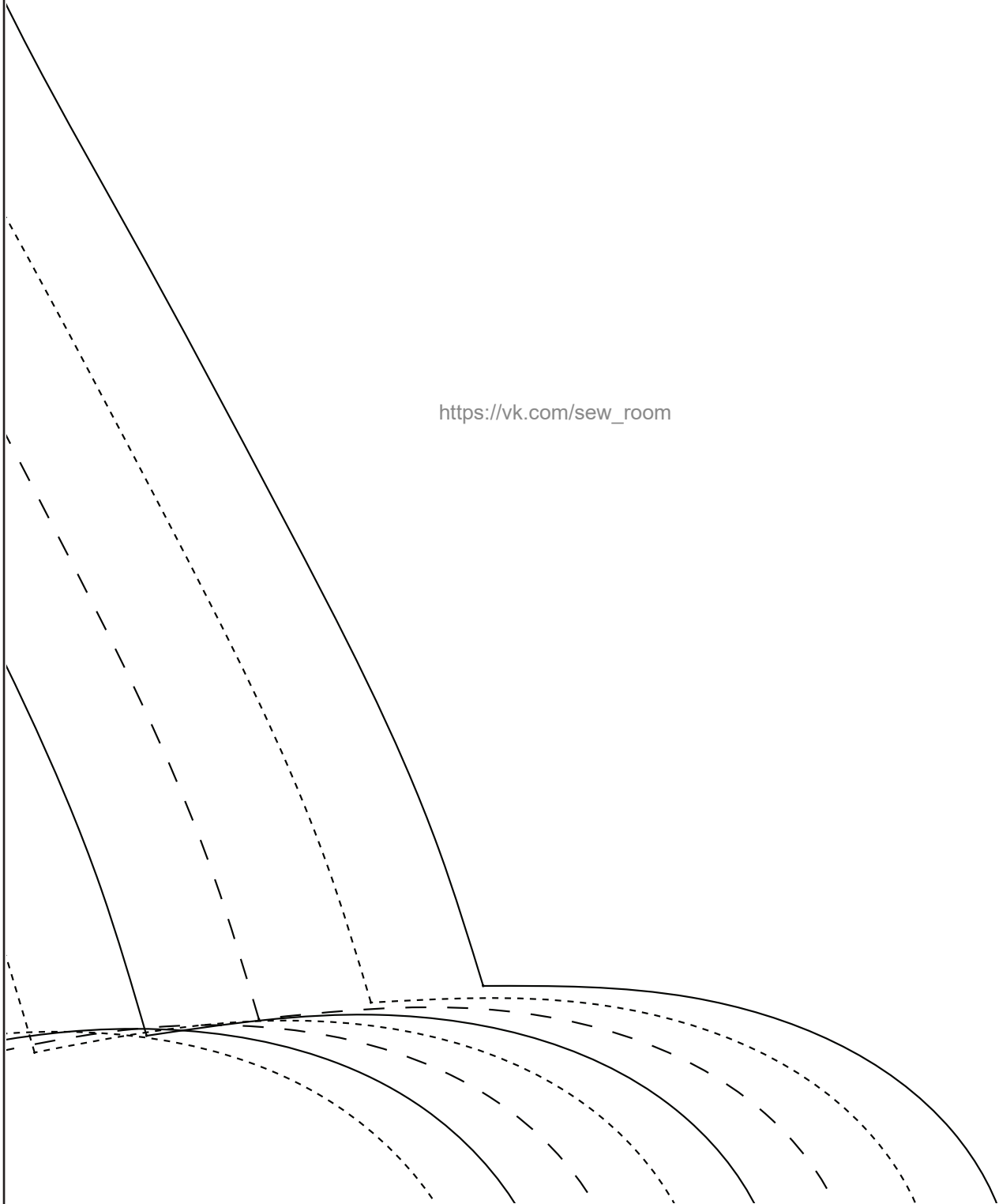
6

[https://vk.com/sew\\_room](https://vk.com/sew_room)





[https://vk.com/sew\\_room](https://vk.com/sew_room)



15



## BACK BODICE

cut 1 on fold

1.5cm seam allowance included

[https://vk.com/sew\\_room](https://vk.com/sew_room)

3





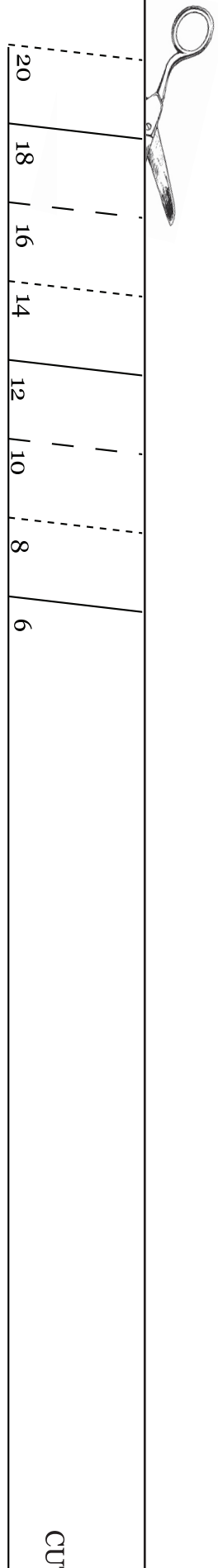
16



CUT ONE ON FOLD

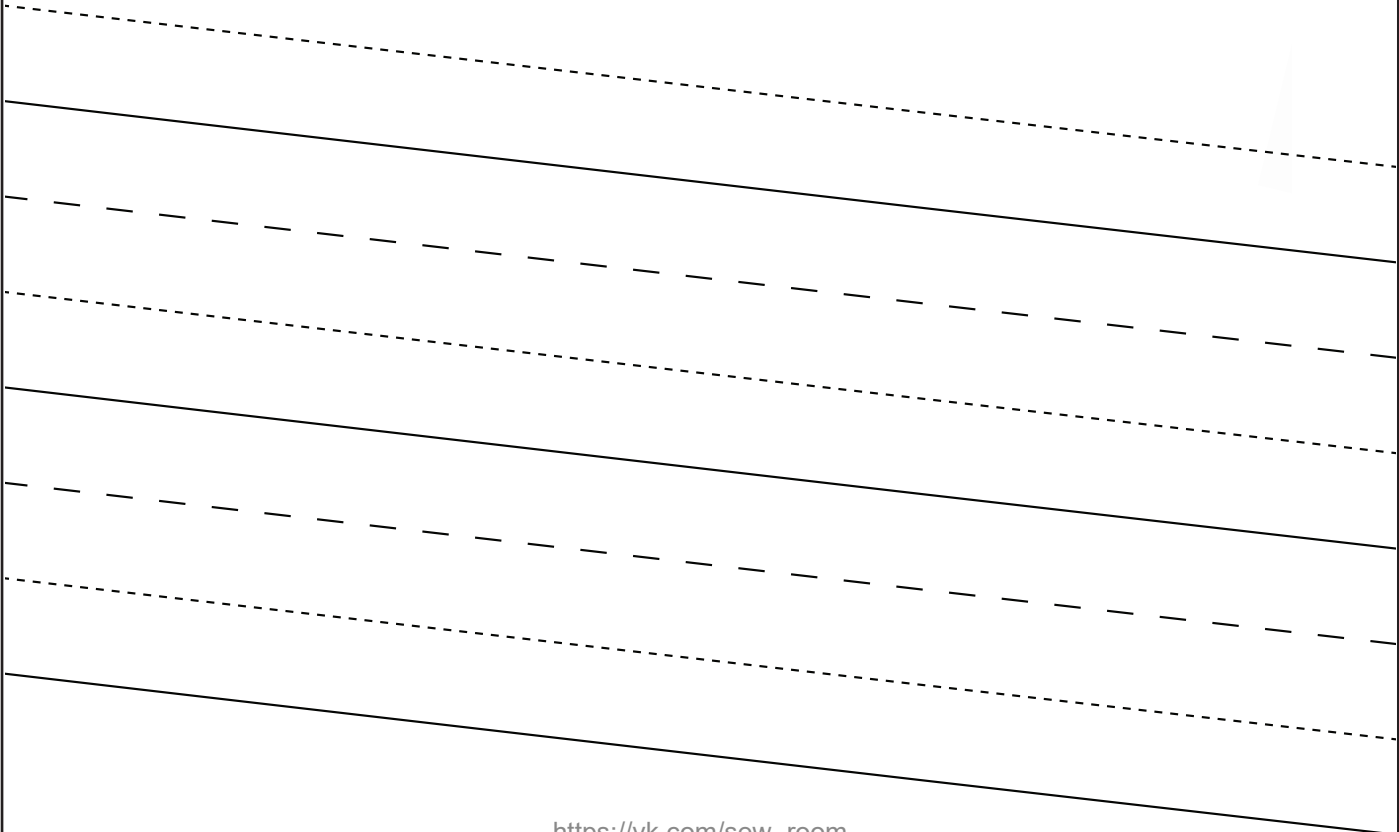
[https://vk.com/sew\\_room](https://vk.com/sew_room)





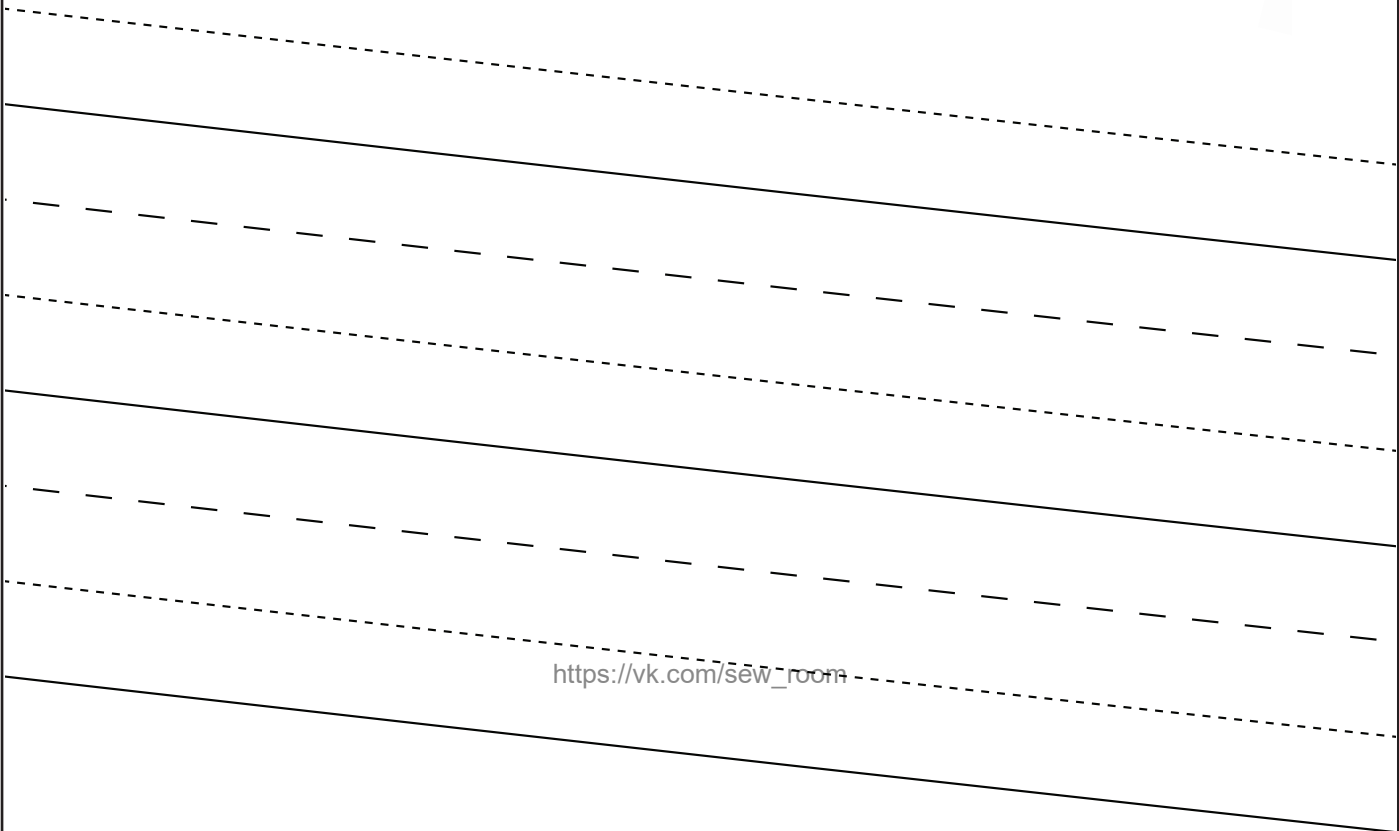
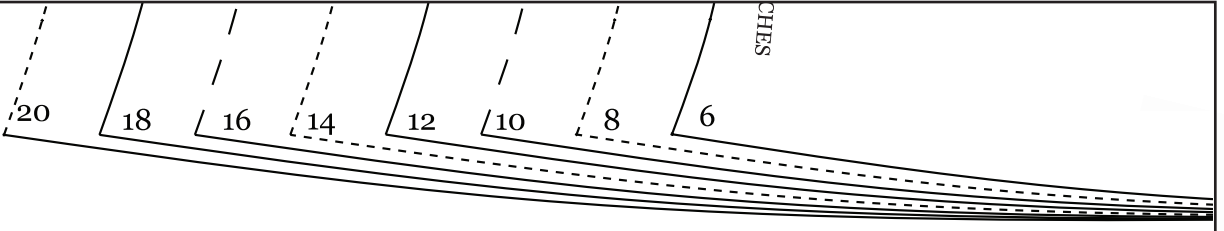
[https://vk.com/sew\\_room](https://vk.com/sew_room)

CU



[https://vk.com/sew\\_room](https://vk.com/sew_room)

19



[https://vk.com/sew\\_room](https://vk.com/sew_room)

20



20

6



[https://vk.com/sew\\_room](https://vk.com/sew_room)



20

18

16

14

12

10

8

6

[https://vk.com/sew\\_room](https://vk.com/sew_room)

22

20 18 16 14 12 10 8 6



[https://vk.com/sew\\_room](https://vk.com/sew_room)

CUT!



[https://vk.com/sew\\_room](https://vk.com/sew_room)

20  
18  
16  
14  
12  
10  
8  
6

WAIST CHANNEL NOTCHES



24



[https://vk.com/sew\\_room](https://vk.com/sew_room)



CUTTING LINE FOR DRESS VERSION. USE 2CM HEM ALLOWANCE

25

[https://vk.com/sew\\_room](https://vk.com/sew_room)



[https://vk.com/sew\\_room](https://vk.com/sew_room)





[https://vk.com/sew\\_room](https://vk.com/sew_room)



[https://vk.com/sew\\_room](https://vk.com/sew_room)

CUT ONE ON FOLD



[https://vk.com/sew\\_room](https://vk.com/sew_room)



*Sew  
Room*

KAFTAN DRESS & TOP

#SR18

## BACK SKIRT

cut 1 on fold

1.5cm seam allowance included

# 4

[https://vk.com/sew\\_room](https://vk.com/sew_room)



**NO**  
NOTE FOR BLOUSE VERSION. USE 2 CM HEM ALLOWANCE



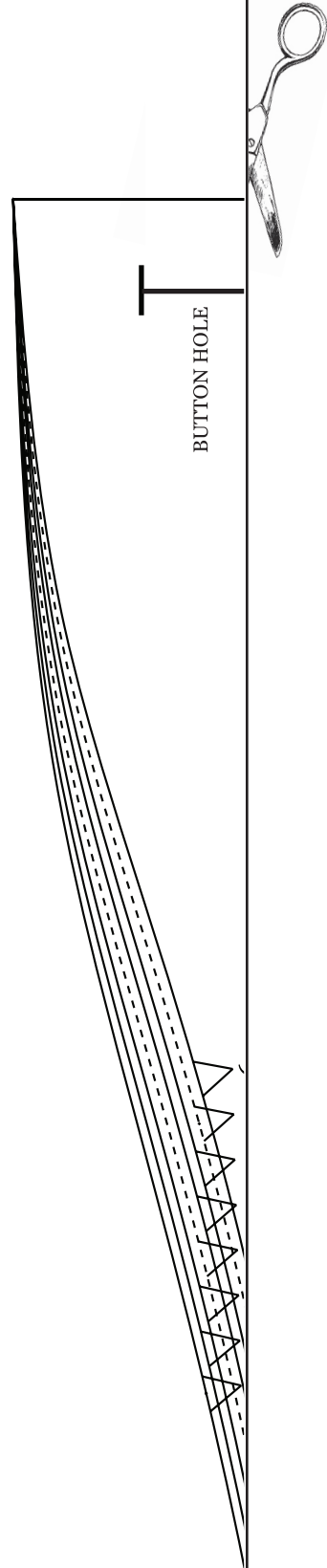
[https://vk.com/sew\\_room](https://vk.com/sew_room)





[https://vk.com/sew\\_room](https://vk.com/sew_room)

[https://vk.com/sew\\_room](https://vk.com/sew_room)





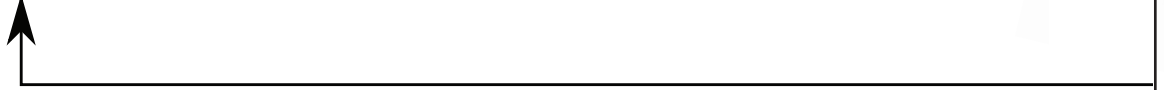
H

[https://vk.com/sew\\_room](https://vk.com/sew_room)

6



35



**FRONT SKIRT**  
cut 1 on fold

1.5cm seam allowance included

**2**

[https://vk.com/sew\\_room](https://vk.com/sew_room)



CUT ONE ON FOLD

TING LINE FOR BLOUSE VERSION. USE 2 CM HEM ALLOWANCE

[https://vk.com/sew\\_room](https://vk.com/sew_room)



CUT ONE ON FOLD

TING LINE FOR BLOUSE VERSION. USE 2 CM HEM ALLOWANCE

[https://vk.com/sew\\_room](https://vk.com/sew_room)



[https://vk.com/sew\\_room](https://vk.com/sew_room)



[https://vk.com/sew\\_room](https://vk.com/sew_room)



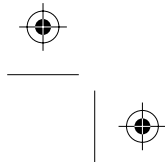
CUTTING LINE FOR DRESS VERSION. USE 2CM HEM ALLOWANCE

[https://vk.com/sew\\_room](https://vk.com/sew_room)

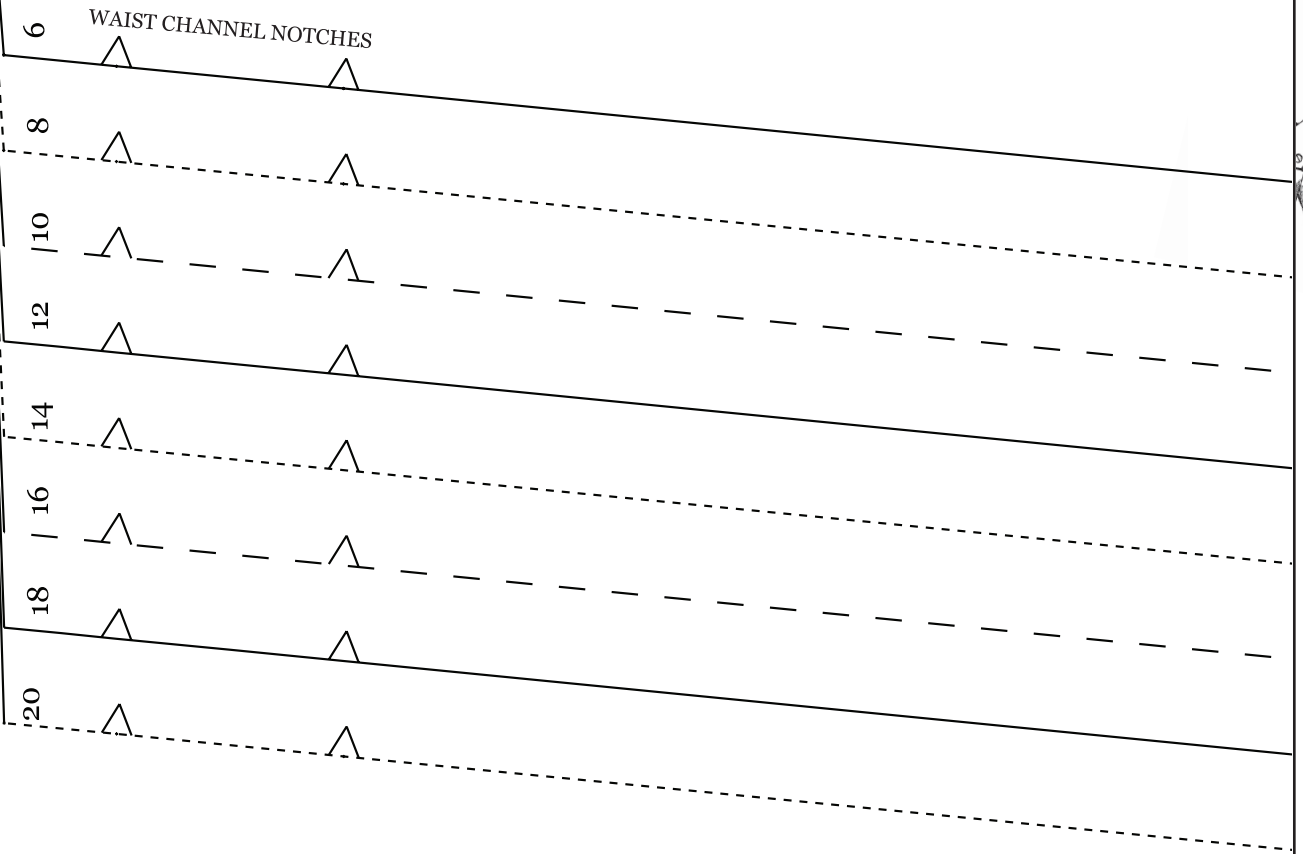




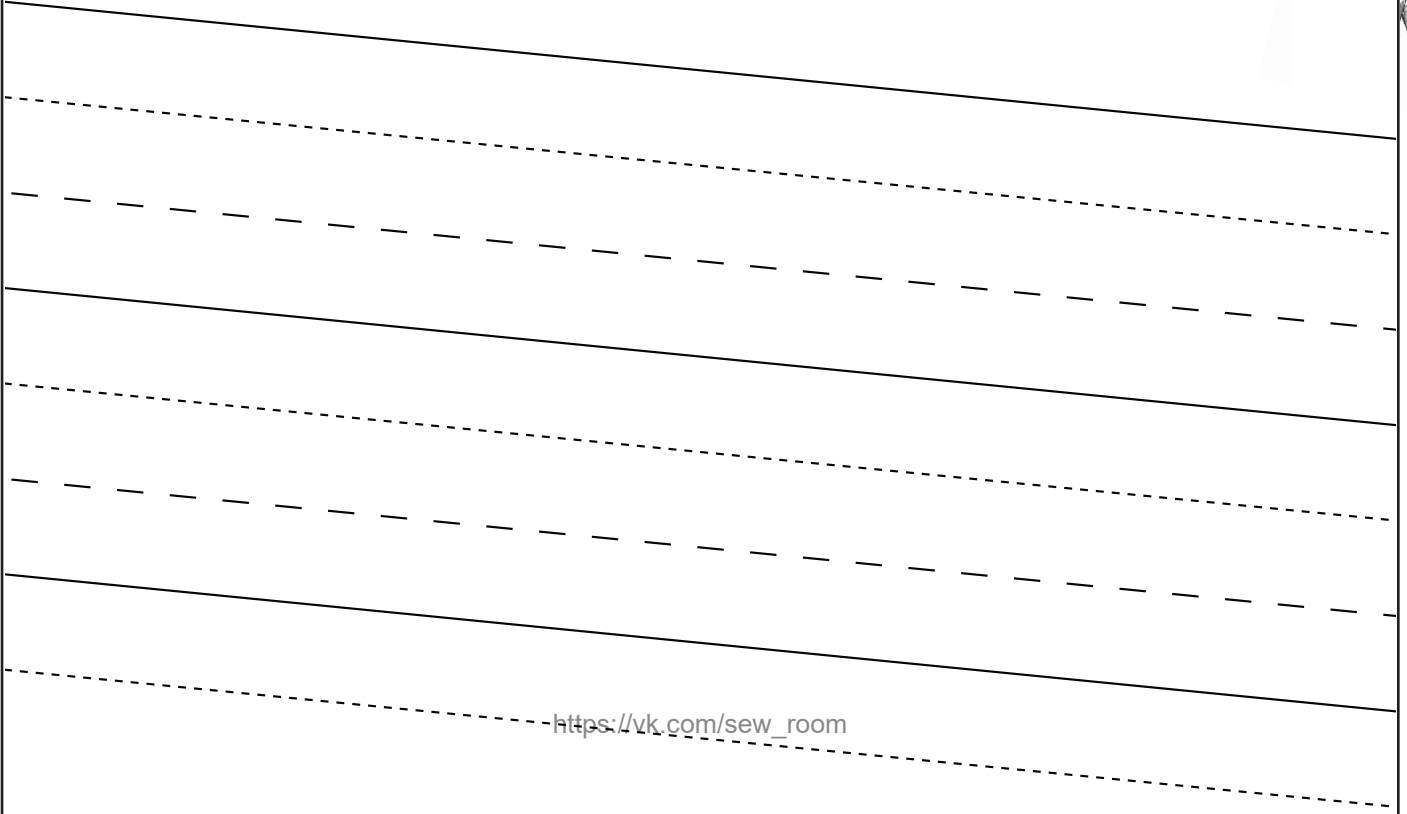
[https://vk.com/sew\\_room](https://vk.com/sew_room)



42

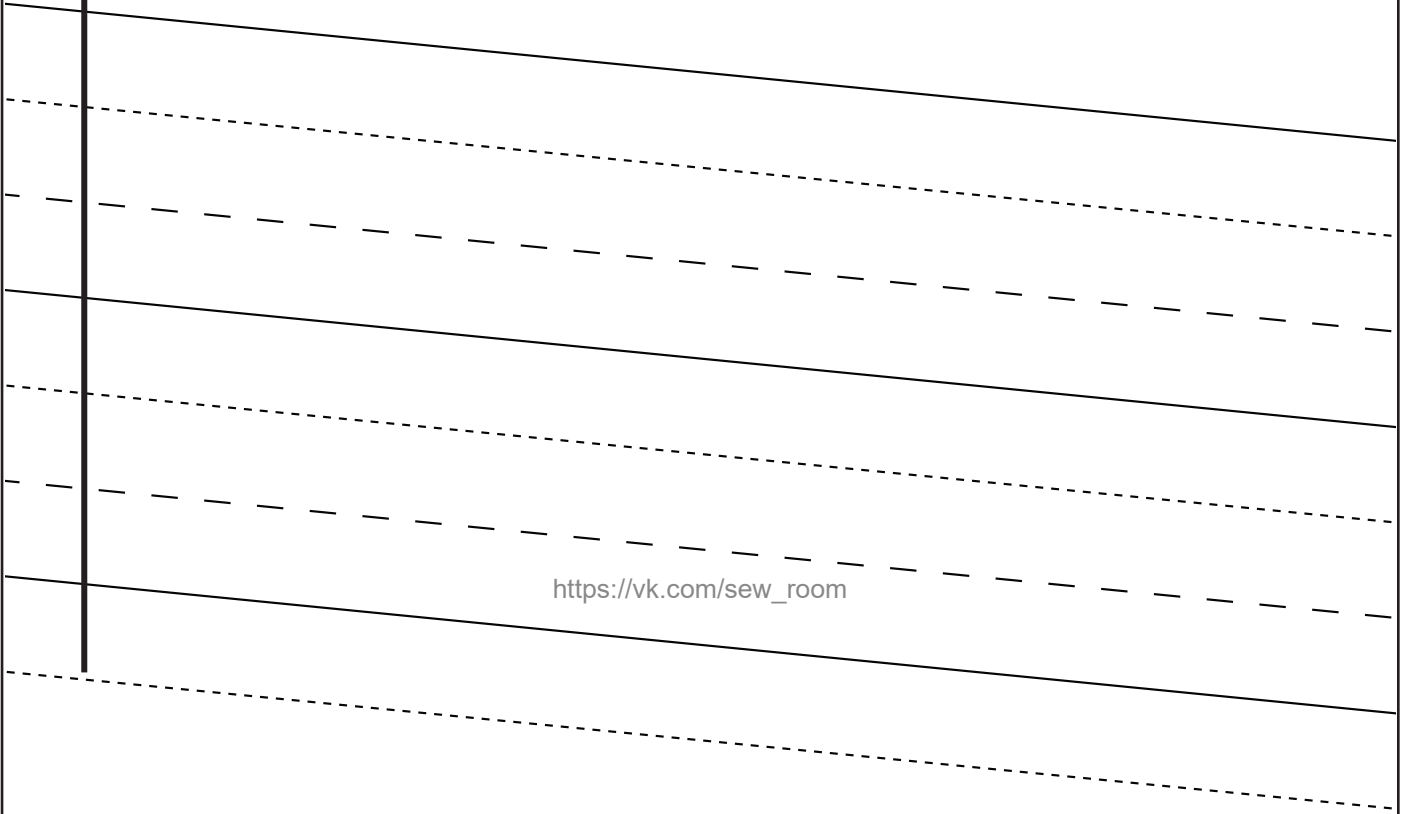


[https://vk.com/sew\\_room](https://vk.com/sew_room)



[https://vk.com/sew\\_room](https://vk.com/sew_room)

CUT  
44

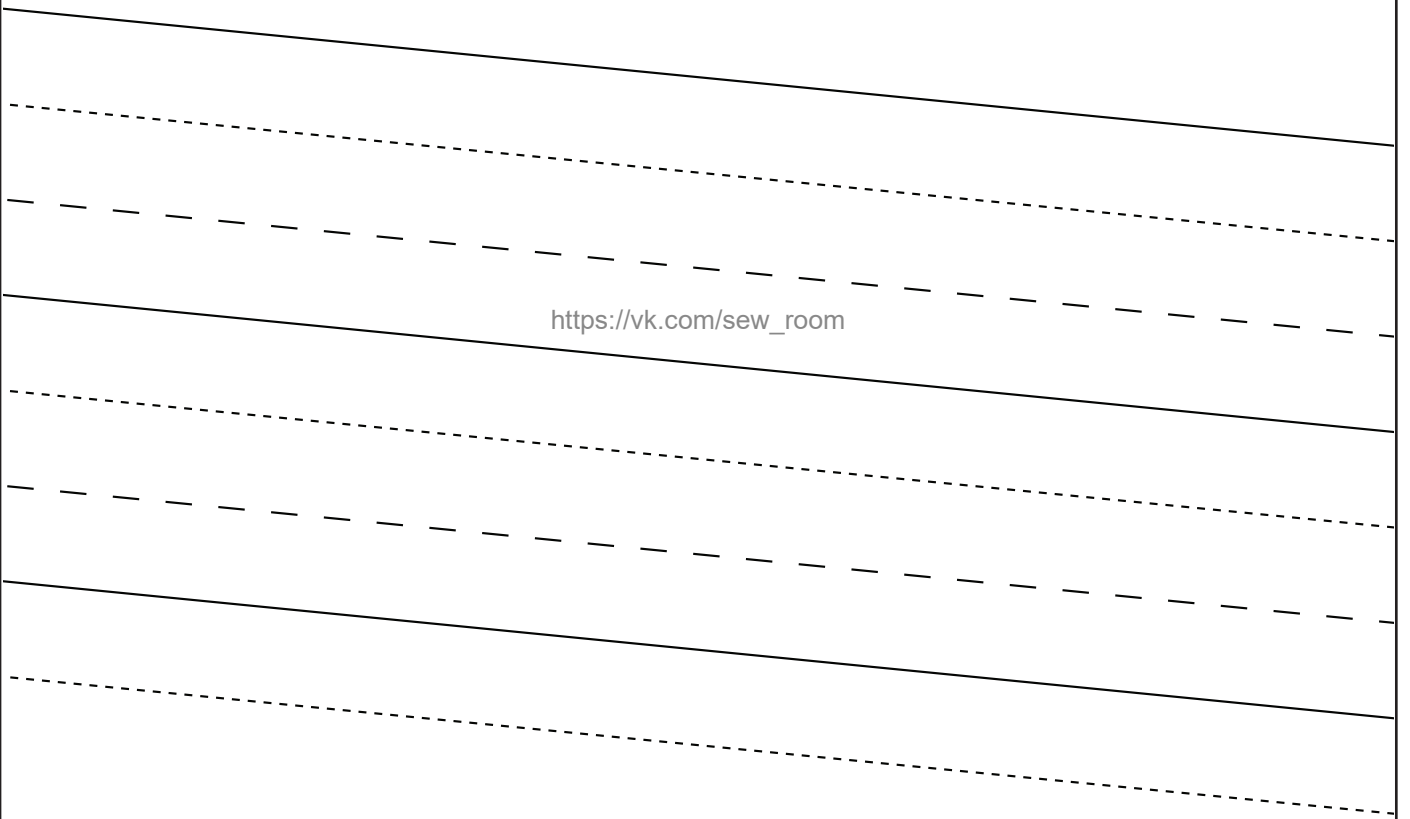


[https://vk.com/sew\\_room](https://vk.com/sew_room)



Handwriting practice area with three sets of lines. Each set consists of a solid top line, a dashed middle line, and a solid bottom line, all slanted downwards from left to right.

[https://vk.com/sew\\_room](https://vk.com/sew_room)

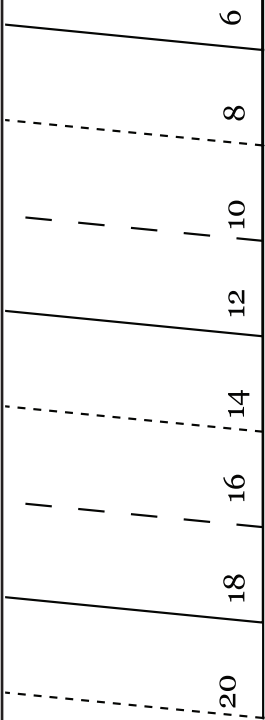


[https://vk.com/sew\\_room](https://vk.com/sew_room)

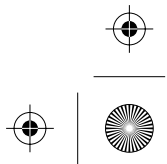


[https://vk.com/sew\\_room](https://vk.com/sew_room)





[https://vk.com/sew\\_room](https://vk.com/sew_room)



We love  
**STYLE**

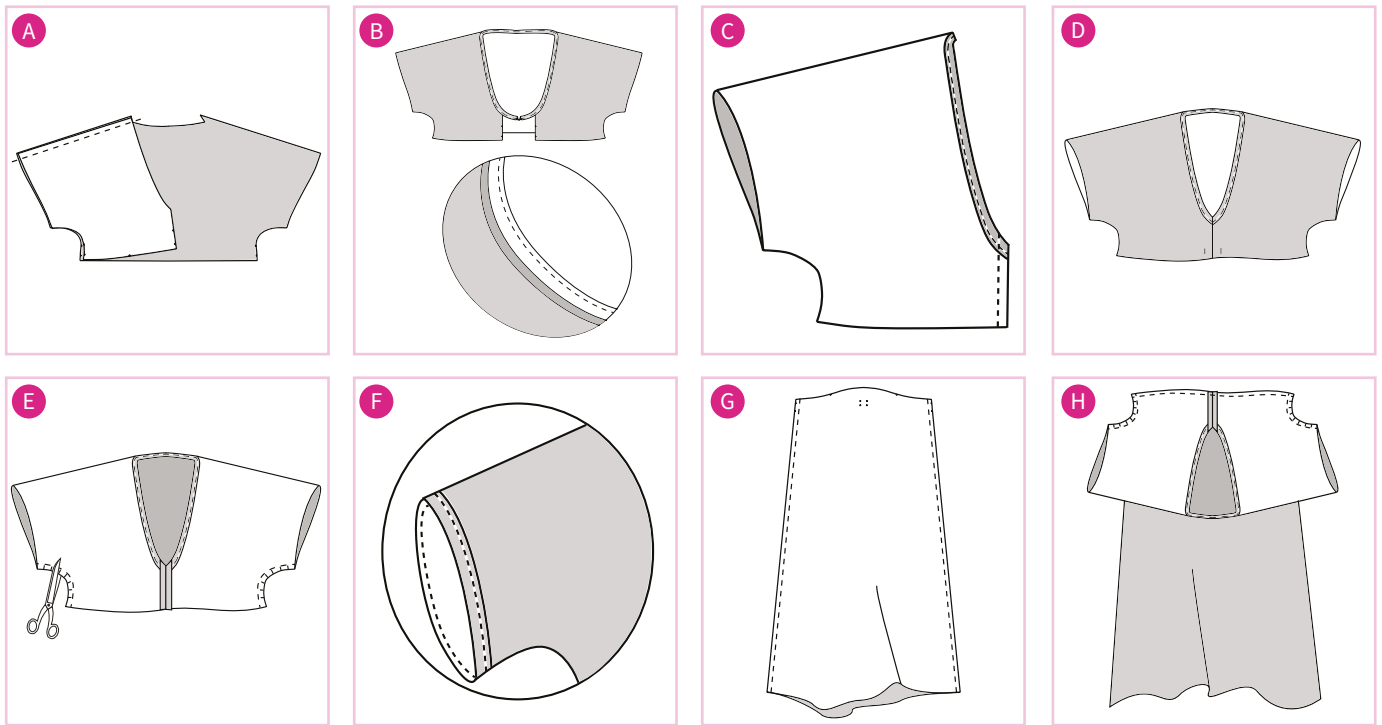
# Island breeze **DRESS**

Get set for summer  
with this lightweight,  
relaxed-style maxi dress

Project **CLAIRE GARSIDE**  
[www.simplesewpatterns.com](http://www.simplesewpatterns.com)

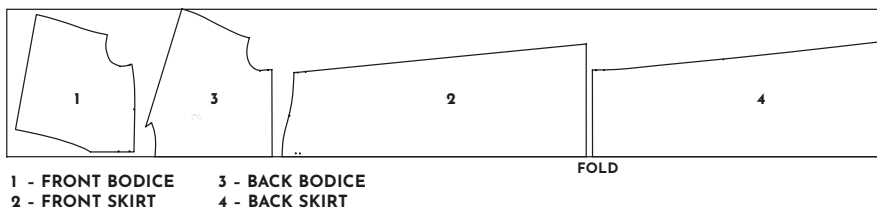


Order the full 2-in-1  
Kaftan Dress & Top  
pattern now from  
[www.simplesew  
patterns.com](http://www.simplesewpatterns.com)



## LAYPLAN

### DRESS LAYPLAN 45"/60"



## FABRIC REQUIREMENTS

Size	45" wide fabric	60" wide fabric
6	3.31m	3.18m
8	3.32m	3.19m
10	3.34m	3.21m
12	3.35m	3.22m
14	3.37m	3.24m
16	3.38m	3.25m
18	3.4m	3.27m
20	n/a	3.28m

## SIZE CHART

Size	Bust	Waist	Hips
6	31"	24"	34"
8	33"	26"	36"
10	35"	28"	38"
12	37"	30"	40"
14	39"	32"	42"
16	41"	34"	44"
18	43"	36"	46"
20	45"	38"	48"

## MATERIALS & TOOLS:

- Tana lawn, lightweight cotton, cheesecloth/seersucker, chiffon, bamboo silk, silk blends, silk, satin (see table for fabric requirements)
- 1.3m of 16mm-wide bias binding
- drawstring (measure your waist and add extra length to tie it)
- drawstring stoppers (optional)
- metal eyelets in place of buttonholes (optional)

- templates downloaded from [www.craftworld.com/cms/love-sewing](http://www.craftworld.com/cms/love-sewing)

## NOTES:

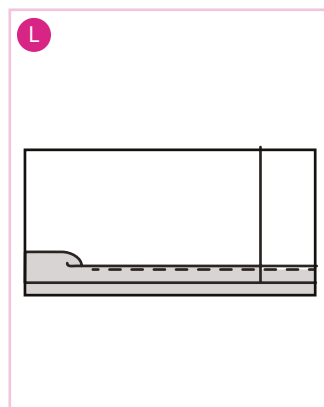
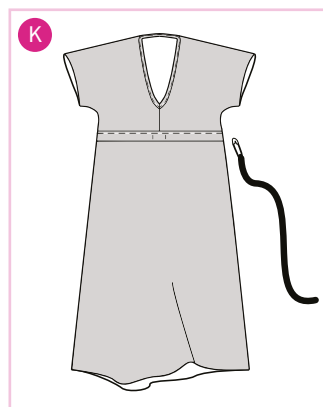
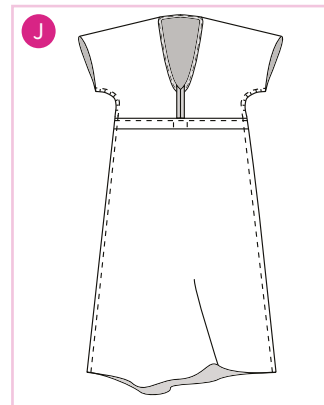
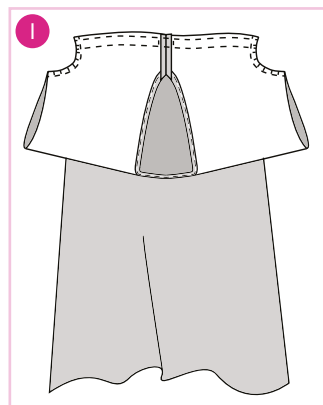
Use a 1.5cm cm seam allowance throughout unless otherwise stated

## HOW TO MAKE:

1 With RST, join left front bodice to back bodice at the shoulders, press seams open. Repeat for the right side.

## FINISHED GARMENT MEASUREMENTS

Size	Bust	Waist (stretched)	Neck to hem
6	39"	38"	56"
8	41"	40"	56¼"
10	43"	42"	56½"
12	45"	44"	56¾"
14	47"	46"	57"
16	49"	48"	57¼"
18	51"	50"	57½"
20	53"	52"	57¾"



Press seams open. (See Pic A.)

- 2 Bias-bind neckline from left centre front to the right centre front. (See Pic B.)
- 3 When you have added the binding, you will need to join the front bodices RST at the centre front. Press the seam open when you have done this. (See pics C & D.)
- 4 With RST, attach front and back bodices together at the side seams. Snip into curves to enable your fabric to lie flat. (See Pic E.)
- 5 Bias-bind the sleeve edges. (See Pic F.)
- 6 With RST, join front and back skirts together at the side seams. Press seams open. (See Pic G.)
- 7 Using the automatic buttonholer on your machine, make two buttonholes using placement guides from the pattern piece. (See Pic H.)
- 8 With RST (on the round), attach the skirt to the bodice. You will find it easier to pin it in place and remove pins as you stitch. (See Pic I.)
- 9 Keeping the skirt and bodice RST and using your notches

as a guide, sew a line to create the waist channel – this is 3cm above the waistline seam you just stitched. You will be sewing through the bodice and the skirt at the same time. (See Pic J.)

- 10 See Pic J to check where your stitches should be lying.
- 11 Turn the dress right sides out and top-stitch the waistband channel along its upper edge all the way around. Thread the drawstring carefully using a safety pin. (See Pic K.)
- 12 Turn up the hem, making sure you have finished the raw edges with a zigzag or overlock stitch. Iron in place and pin if you prefer. (See Pic L.) Stitch all the way around, removing pins as you sew. Give your dress a good press, and it is now finished and ready to be worn!

## Shopping list

Blue Storrs London Egyptian cotton lawn, £20.50 per metre  
[www.minerva.com](http://www.minerva.com)