

# Summer **MOSAIC**

This colour block sundress is a brilliant scrap-busting project, perfect for sunny summer days!

Project **SARAH LAWS**  
**My Handmade Wardrobe Patterns**



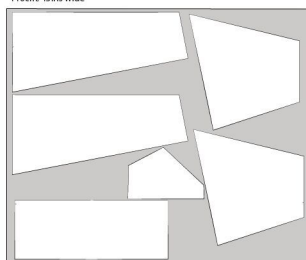
**MY HANDMADE  
WARDROBE**

Freya and Sarah co-own Crafty Sew & So, a Leicester-based fabric shop and sewing studio. They launched their pattern range, My Handmade Wardrobe Patterns, in January 2018 and design modern sewing patterns that everyone can sew. Visit

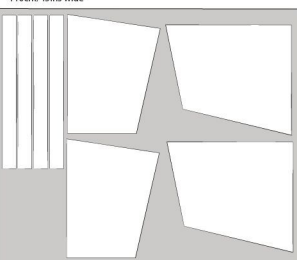
**[www.myhandmade-wardrobestyle.com](http://www.myhandmade-wardrobestyle.com)**  
for more!

## LAYPLANS:

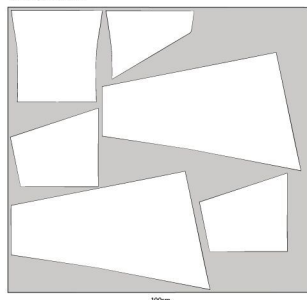
Fabric 1  
110cm/45ins wide



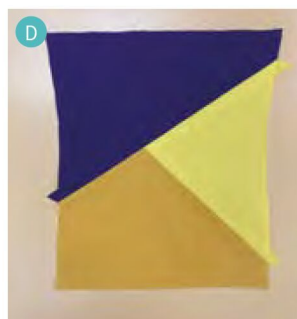
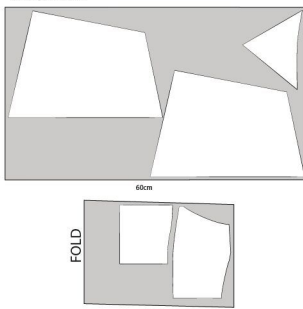
Fabric 2  
110cm/45ins wide



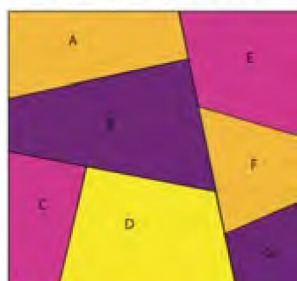
Fabric 3  
110cm/45ins wide



Fabric 4  
110cm/45ins wide



## PANEL GUIDE



## MATERIALS & TOOLS:

- Colour one 90cm of 110cm/45"-wide fabric
- Colour two 130cm of 110cm/45"-wide fabric
- Colour three 100cm of 110cm/45"-wide fabric
- Colour four 60cm of 110cm/45"-wide fabric
- reel of shirring elastic
- templates downloaded from [www.craftworld.com/cms/love-sewing](http://www.craftworld.com/cms/love-sewing)

## NOTES

All seam allowances are 1.5cm unless stated otherwise.

Use light- to medium-weight stable woven fabrics. Where possible, combining fabrics of a similar weight will produce the best outcome.

We recommend using an overlocker or zigzag stitch on a sewing machine to finish the edges where instructed. Use a straight stitch on the sewing machine to construct the garment. All fabrics are placed right sides

together before sewing, unless stated otherwise.

When cutting out the skirt panels, cut 2 copies of each piece NOT a MIRRORED PAIR.

Transfer all notches and mark the edges to be finished before construction with a chalk 'x'.

Once the panels are joined, they are referred to as the combined panels name i.e. ABCD.

## HOW TO MAKE:

- 1 Finish the raw edges of the skirt panels where you have marked from the pattern.
- 2 Take one of each of the skirt panels. Join A to B at the horizontal seam. Match the notches and be aware that when joining the seam, the ends of the seam allowances may not match. (See Pic A.) Join C to D at the vertical seam. Press seams open.
- 3 Join AB and CD at the

horizontal seam. Join E to F and then F to G at the horizontal seams. (See Pic B.) Finish all vertical edges, including the side seams, of joined panels ABCD and EFG. Press all seams open.

4 Join ABCD to EFG at the vertical seam. Repeat to create a second skirt panel. Join the front and back skirt panels at the side seams. Press all the seams open.

5 Hem the skirt. Press a 1.5cm hem to the wrong side of the skirt and top-stitch to secure.

6 Sew darts in side front bodice outer and lining panels. (See Pic C.)

7 Join the colour-blocked front panels K to J, then press the seam open then join then to panel one to complete the front outer panel. (See Pic D.)

8 Join two of the side fronts to the colour-blocked front panel. Join two of the side fronts to the centre front lining panel. (See Pic E.) Join the side backs to fronts at the side seams for the outer and lining.

9 Make the four straps. Sew along the edge and one of the open short ends, leaving one end open. Trim the SA to 5mm and use a loop turner

## ELASTIC LENGTHS

Size	Elastic length (cms)
XS	15
S	16
M	17
L	18
XL	19
XXL	20
XXXL	22
4XL	25

## GARMENT MEASUREMENTS (IN CMS)

Size	XS	S	M	L	XL	XXL	XXXL	4XL
Bust	82	87	92	97	102	107	114	126
Waist	66	71	76	81	87	93	99	109
Hip	90	95	100	105	110	115	120	130



to turn the right way out. Press. (See Pic F.)

**10** Position the straps where marked, aligning the raw edges. Stitch to secure. (See Pic G.)

**11** With right sides together and sandwiching the straps between the outer and lining, join the outer bodice to the lining at the neckline edge only. Turn the right way out and press.

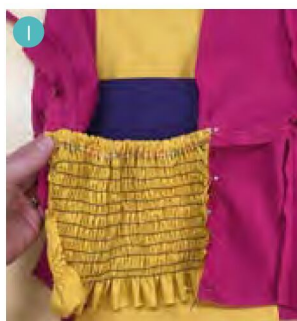
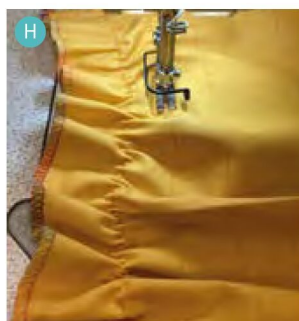
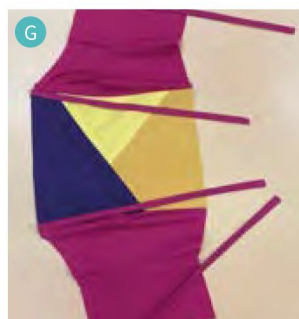
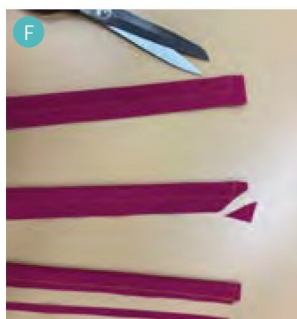
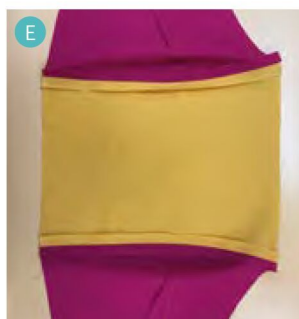
**12** Finish the raw edge of the top of the back panel which will be shirred, and turn in 1.5cm hem at the top edge. Top-stitch to secure.

**13** To shirr the back panel, hand-wind shirring elastic onto the bobbin only, and extend your stitch length to 4mm and practice on scrap fabric to perfect the shirring. The panel should gather to approximately 60% of its original size. Start stitching 2.5cm down from the top folded edge. Stitch rows of shirring spaced 1.5cm apart. Your final row of stitching should be no less than 2.5cm from the bottom edge. (See Pic H.)

**14** Cut back elastic as per the table. Thread the elastic into the channel in the shirred panel and stitch both ends to secure and gather the top edge.

**15** Open up the bodice and lining with the right sides facing up. Place the shirred panel over the outer panel, aligning the raw edge of the shirred panel with the raw edge of the bodice back and taking care to line up the top of the shirred panel with the neckline seam. Stitch in place. (See Pic I.)

**16** Pull the lining over the shirred panel to cover it and align the side back raw edges. Stitch just inside the previous stitching line to secure the lining and outer together and sandwiching the shirred panel in between. Repeat for the other side of the shirred panel and side back panels.



**17** Turn the bodice the right way out and press well, rolling the lining towards the inside. With wrong sides together, baste the lining and outer bodice together at the waist 1cm from the edge.

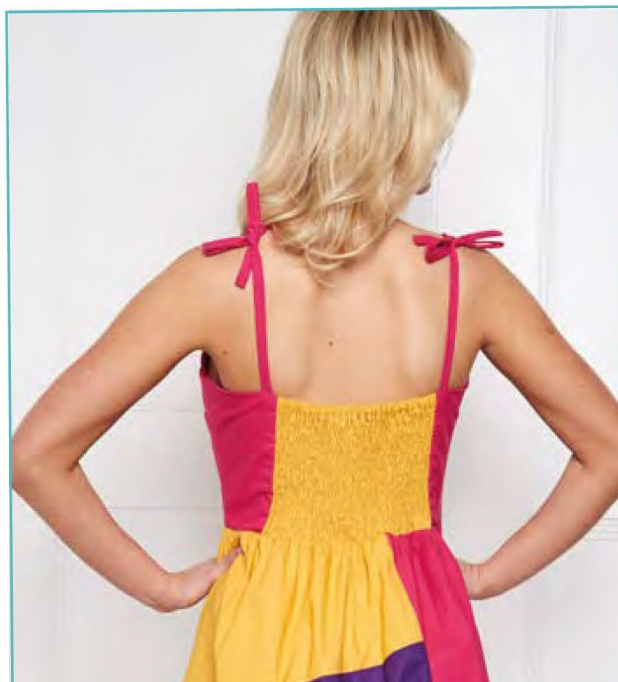
**18** Cut waist elastic to the waist measurement for your chosen size. You do not need to add any extra. Join the elastic to form a loop.

**19** Pin the elastic around the top inside edge of the skirt approximately 1.2cm down from the raw edge. Start by matching the elastic join with a side seam and pin the elastic to the skirt at this point. Fold the elastic in half, mark and match this point with the other side seam. (See Pic J.)

**20** Next find the quarter points on the elastic, mark and match with the centre front and back of the skirt. Stretch the elastic and pin to the fabric at equally spaced points approximately every 20-30cm.

**21** Stitch the elastic in place with a very long straight or zigzag stitch, stretching it to fit and gather the fabric.

**22** Join the skirt to the bodice. Slip the bodice wrong way out, over the

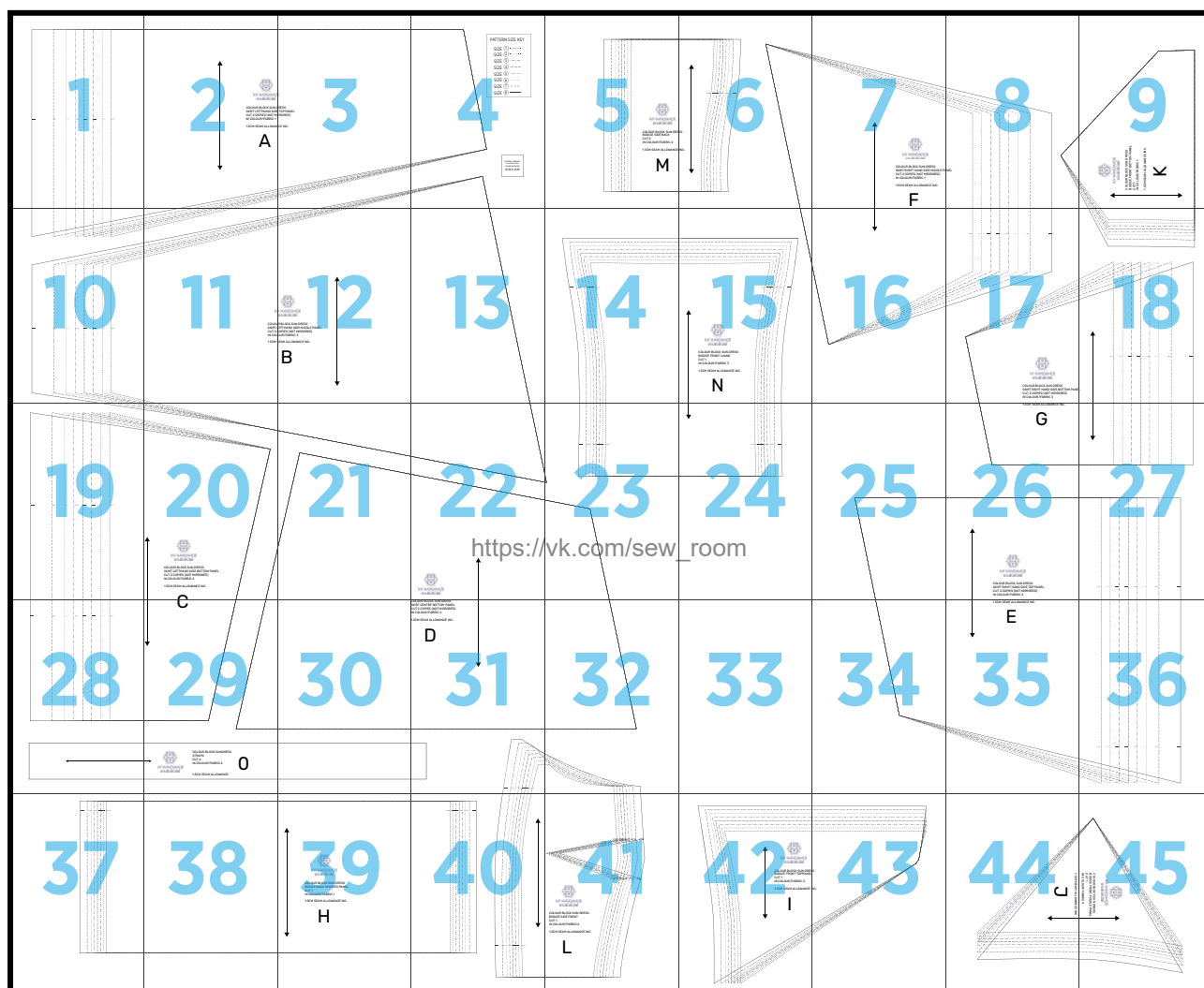


skirt and align the raw edges. Start by matching the side seams, match the notches at front and back and continue to pin all around – or I find quilting clips very useful for holding all the gathered edges together. Stitch making sure you keep the elastic attachment stitching inside the seam allowances. When stitching the back-shirred

panel to the skirt, make sure to pull the fabrics out flat keeping the edges aligned. This will maintain the stretch in the back waist to enable the dress to be taken off and put on.

**23** Finish the waist edges together with an overlocker (taking care not to cut the elastic with the overlocker blade) or zigzag stitch. Give it a final press.

# Платье Мозаика



## GARMENT MEASUREMENTS (IN CMS)

Size	XS	S	M	L	XL	XXL	XXXL	4XL
Bust	82	87	92	97	102	107	114	126
Waist	66	71	76	81	87	93	99	109
Hip	90	95	100	105	110	115	120	130



1



[https://vk.com/sew\\_room](https://vk.com/sew_room)

2



MY HANDMADE  
WARDROBE

[https://vk.com/sew\\_room](https://vk.com/sew_room)

COLOUR BLOCK SUN D  
SKIRT LETHAND SIDE  
CUT 2 COPIES (NOT MI  
IN COLOUR/FABRIC 1

1.5CM SEAM ALLOWAN

A

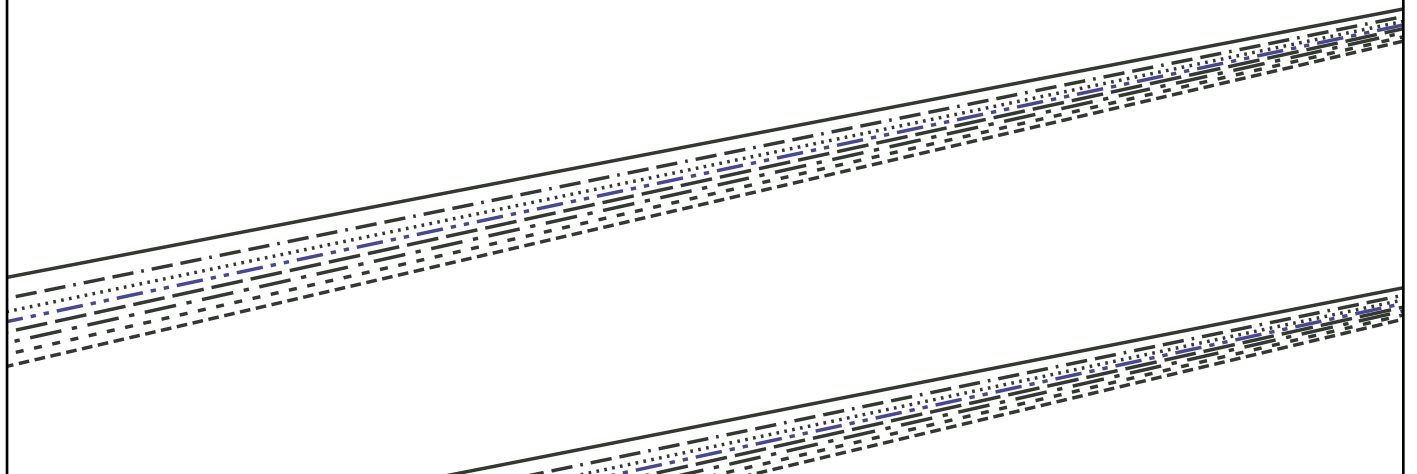


E

RESS  
TOP PANEL  
(MIRRORED)

[https://vk.com/sew\\_room](https://vk.com/sew_room)

CE INC.





## PATTERN SIZE KEY

SIZE ① ······

SIZE ② ······

SIZE ③ ······

SIZE ④ ······

SIZE ⑤ ······

SIZE ⑥ ······

SIZE ⑦ ······

SIZE ⑧ ······

[https://vk.com/sew\\_room](https://vk.com/sew_room)

PATTERN IS PRINTED  
TO SCALE IF THIS  
SQUARE MEASURES  
3CM X 3CM

5



[https://vk.com/sew\\_room](https://vk.com/sew_room)



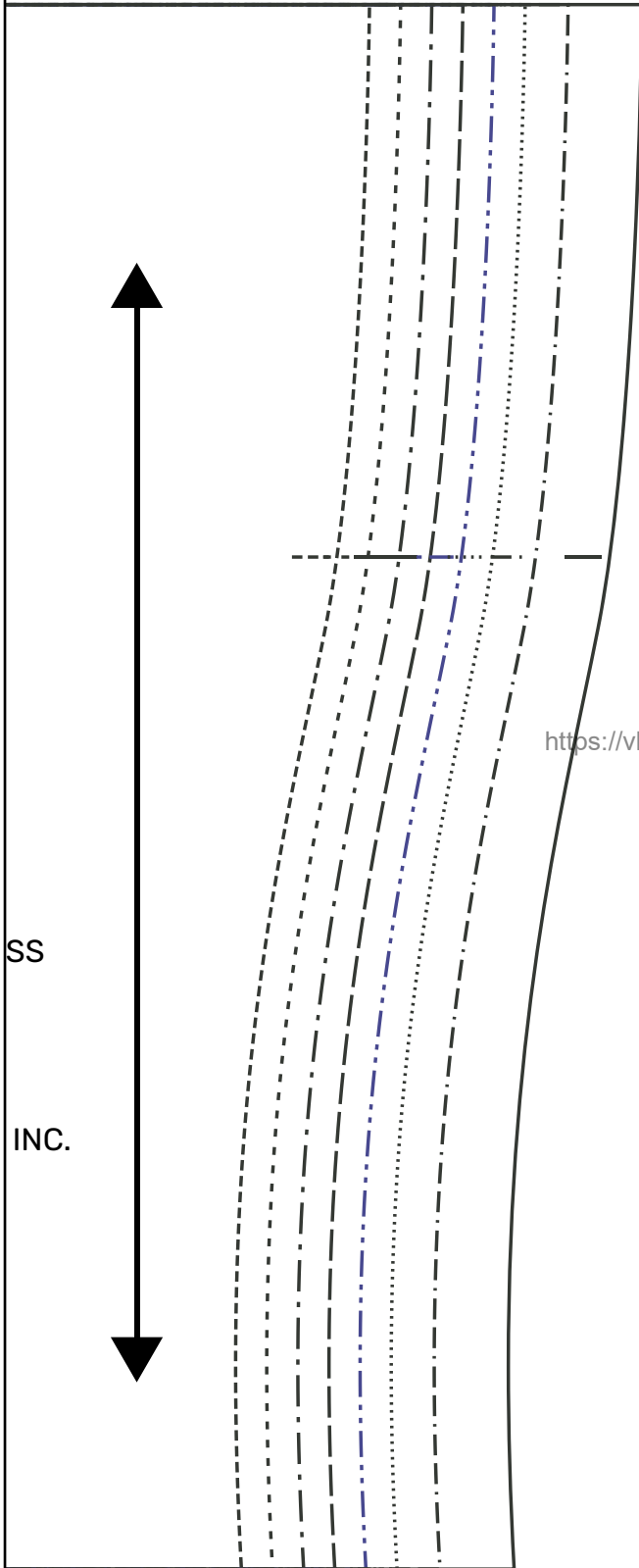
MY HANDMADE  
WARDROBE

COLOUR BLOCK SUN DRESS  
BODICE SIDE BACK  
CUT 2  
IN COLOUR/FABRIC 2

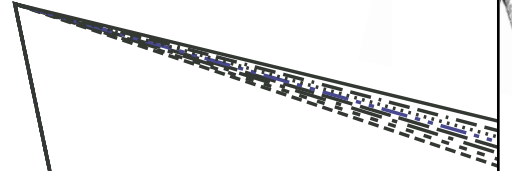
1.5CM SEAM ALLOWANCE

M

6

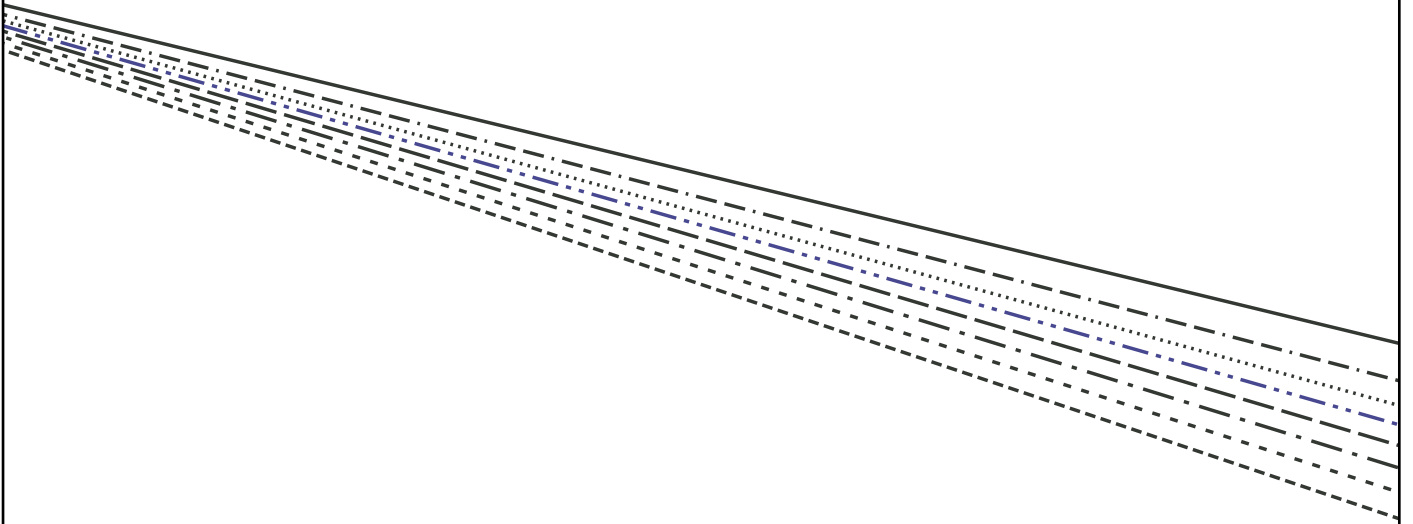


[https://vk.com/sew\\_room](https://vk.com/sew_room)





7



[https://vk.com/sew\\_room](https://vk.com/sew_room)

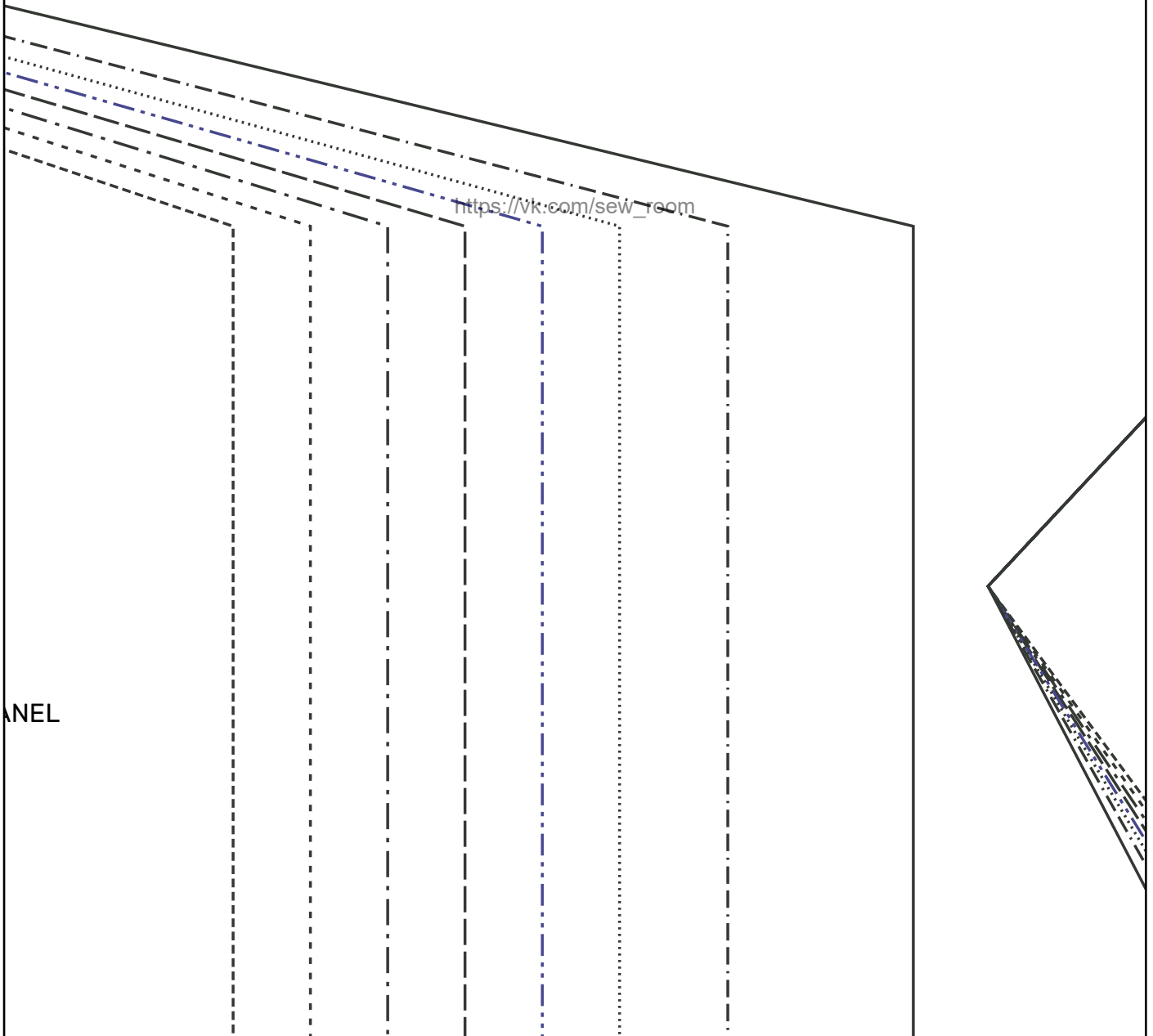


MY HANDMADE  
WARDROBE

COLOUR BLOCK SUN DRESS  
SKIRT RIGHT HAND SIDE MIDDLE PA  
CUT 2 COPIES (NOT MIRRORED)  
IN COLOUR/FABRIC 1

1.5CM SEAM ALLOWANCE INC.

F



ANEL

[https://vk.com/sew\\_room](https://vk.com/sew_room)



[https://vk.com/sew\\_room](https://vk.com/sew_room)



MY HANDMADE  
WARDROBE

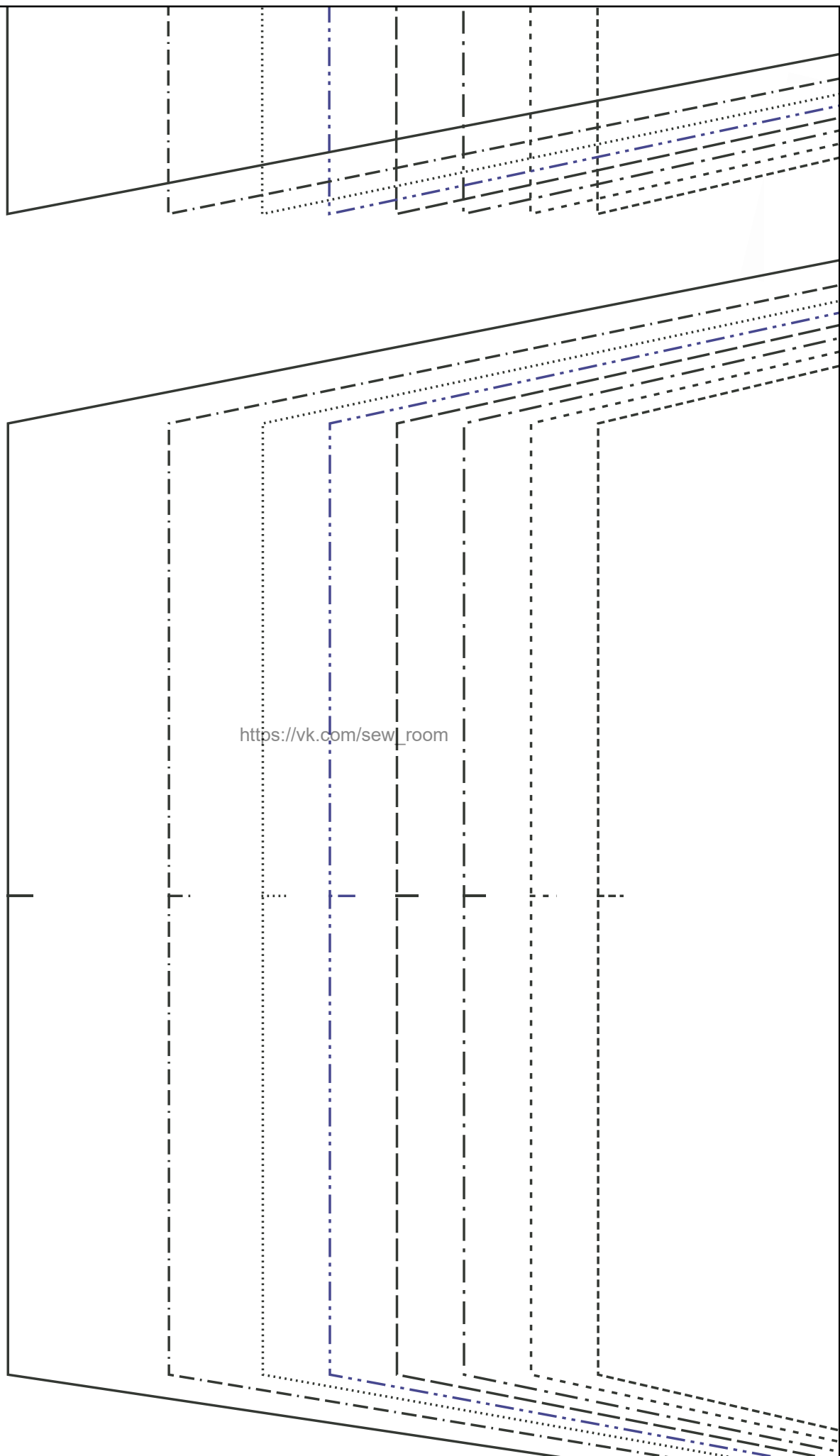
COLOUR BLOCK SUN DRESS  
BODICE FRONT BOTTOM PANEL  
CUT 1  
IN COLOUR/FABRIC 1

1.5CM SEAM ALLOWANCE INC.

K







[https://vk.com/sew\\_room](https://vk.com/sew_room)

11



[https://vk.com/sew\\_room](https://vk.com/sew_room)

M

COLOUR  
SKIRT  
CUT 2  
IN COL  
1.5CM



Y HANDMADE  
WARDROBE

R BLOCK SUN DRESS  
LEFTHAND SIDE MIDDLE PANEL  
COPIES (NOT MIRRORED)  
OUR/FABRIC 3

SEAM ALLOWANCE INC.

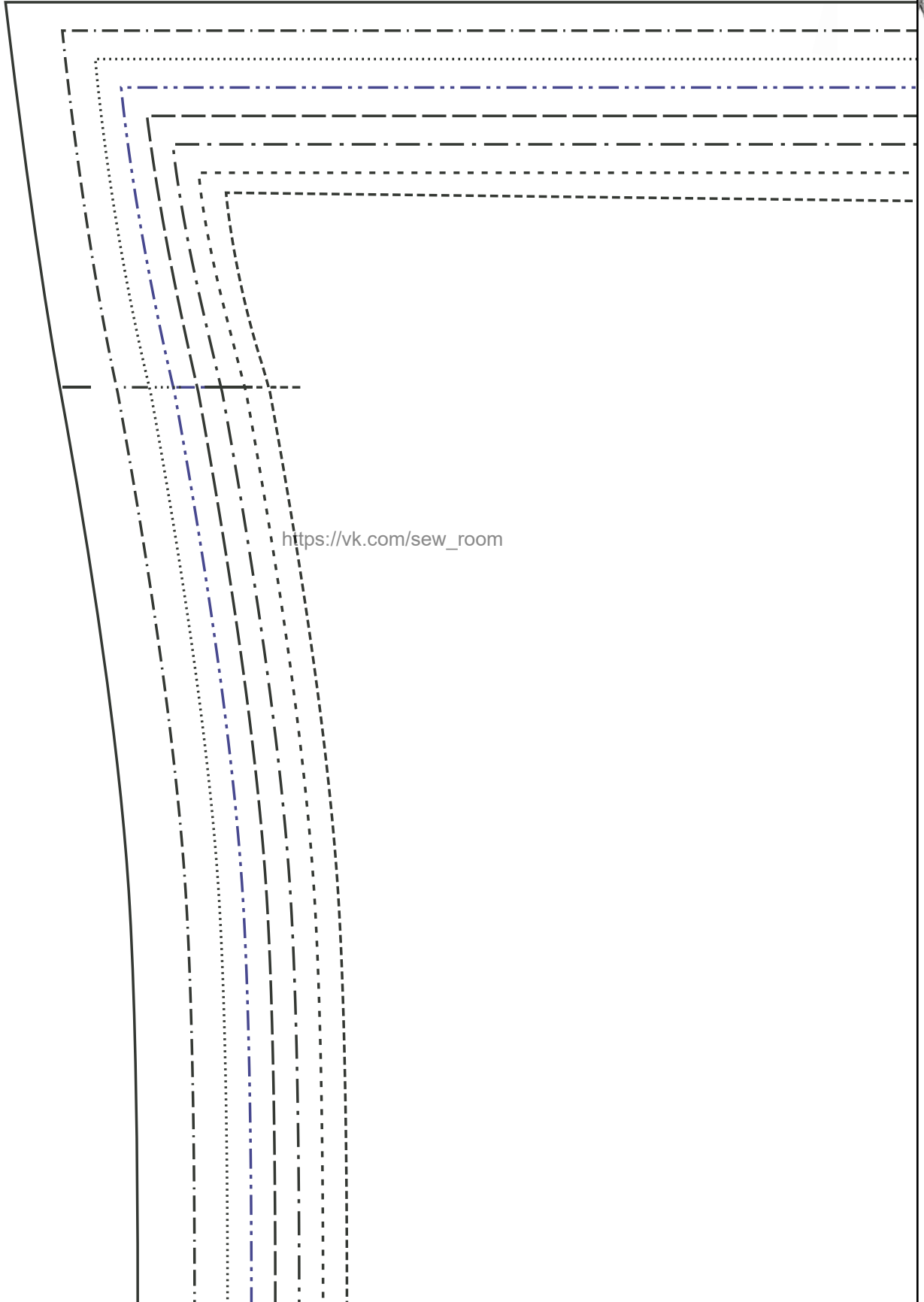
[https://vk.com/sew\\_room](https://vk.com/sew_room)

**B**

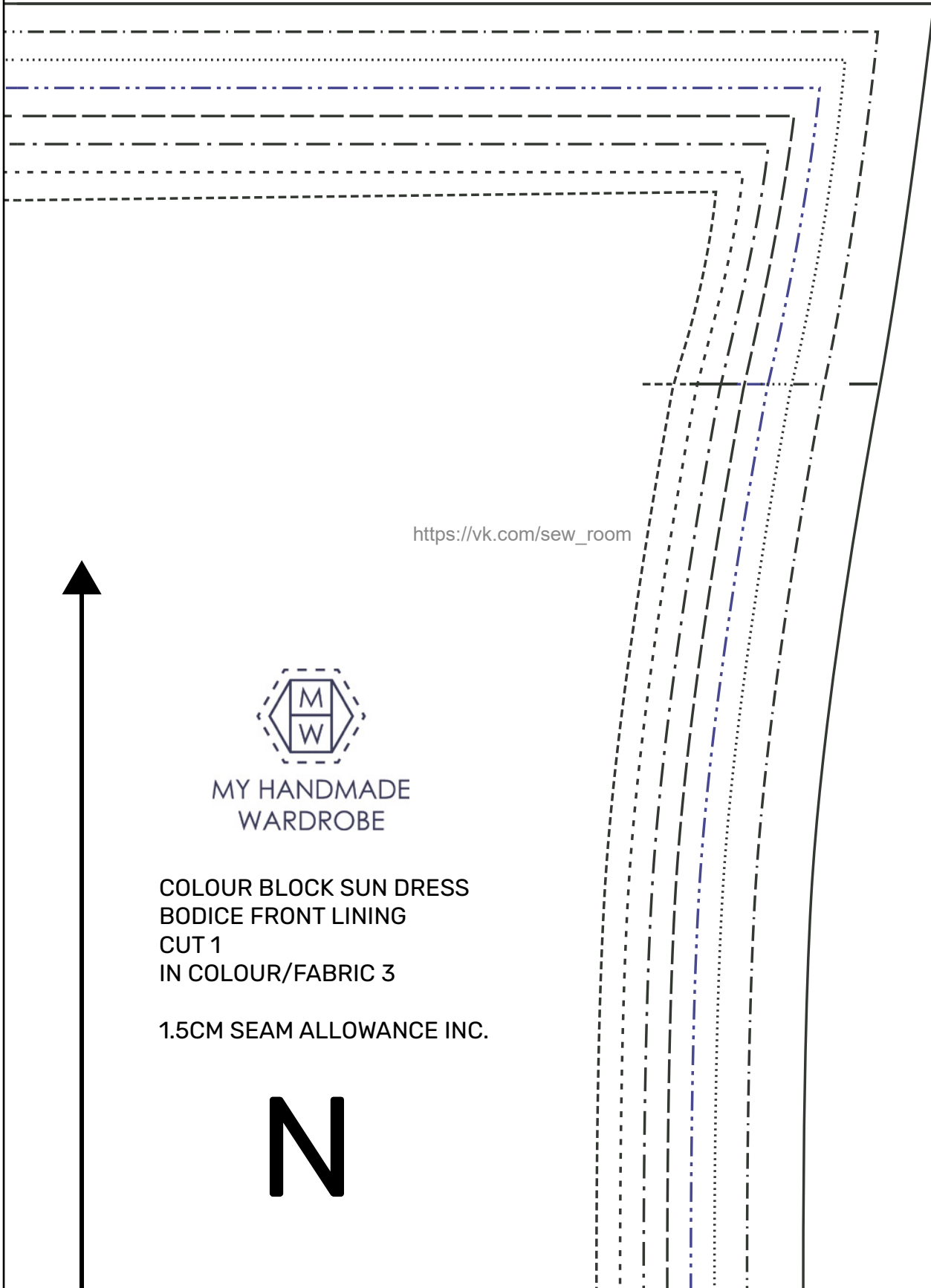




[https://vk.com/sew\\_room](https://vk.com/sew_room)



[https://vk.com/sew\\_room](https://vk.com/sew_room)



[https://vk.com/sew\\_room](https://vk.com/sew_room)



MY HANDMADE  
WARDROBE

COLOUR BLOCK SUN DRESS  
BODICE FRONT LINING  
CUT 1  
IN COLOUR/FABRIC 3

1.5CM SEAM ALLOWANCE INC.

# N

16



[https://vk.com/sew\\_room](https://vk.com/sew_room)

17



[https://vk.com/sew\\_room](https://vk.com/sew_room)

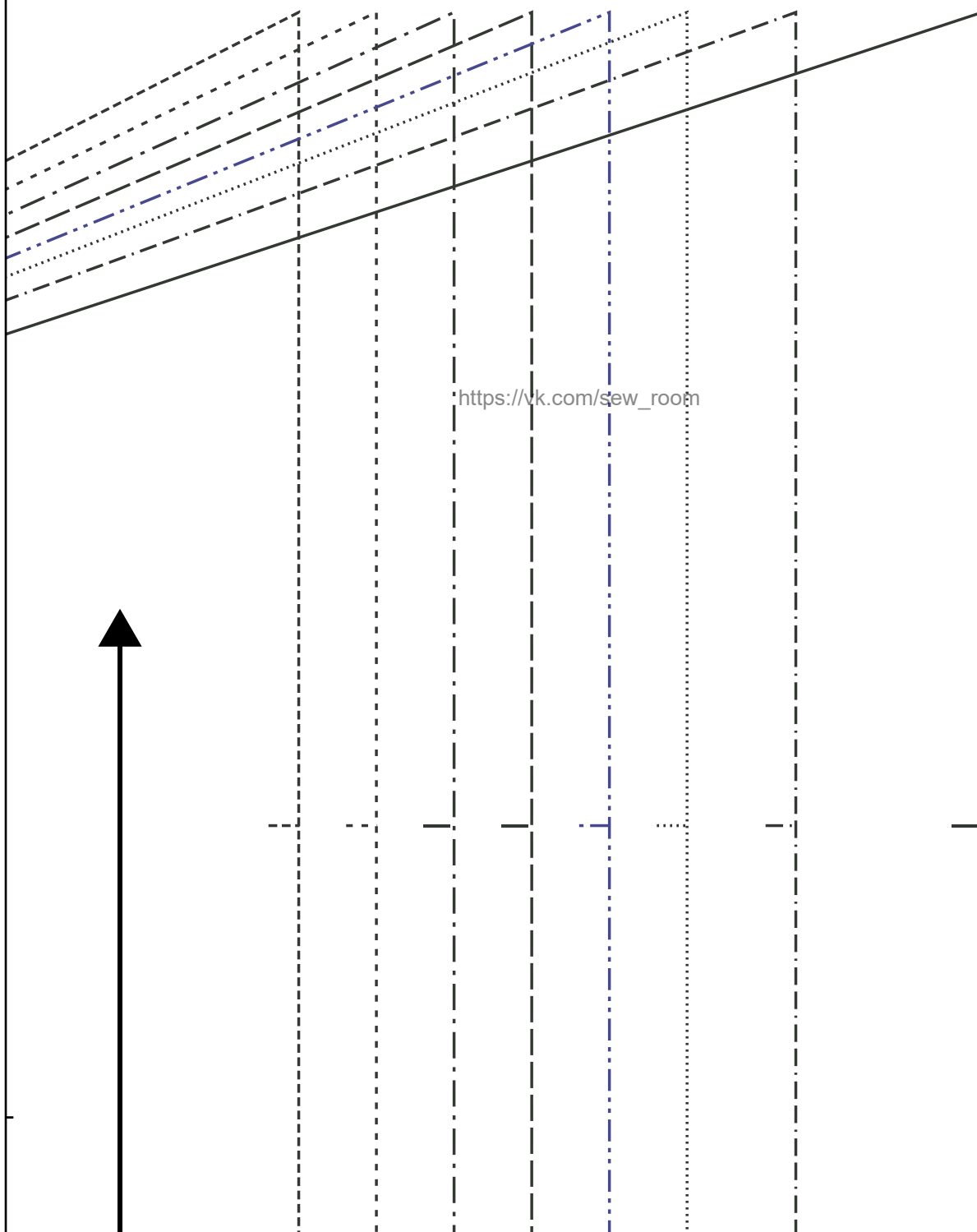
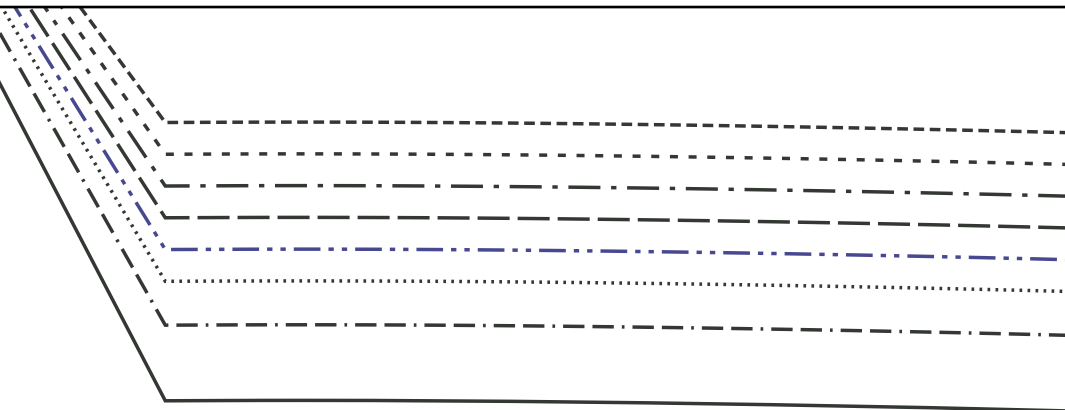


MY HANDMADE  
WARDROBE

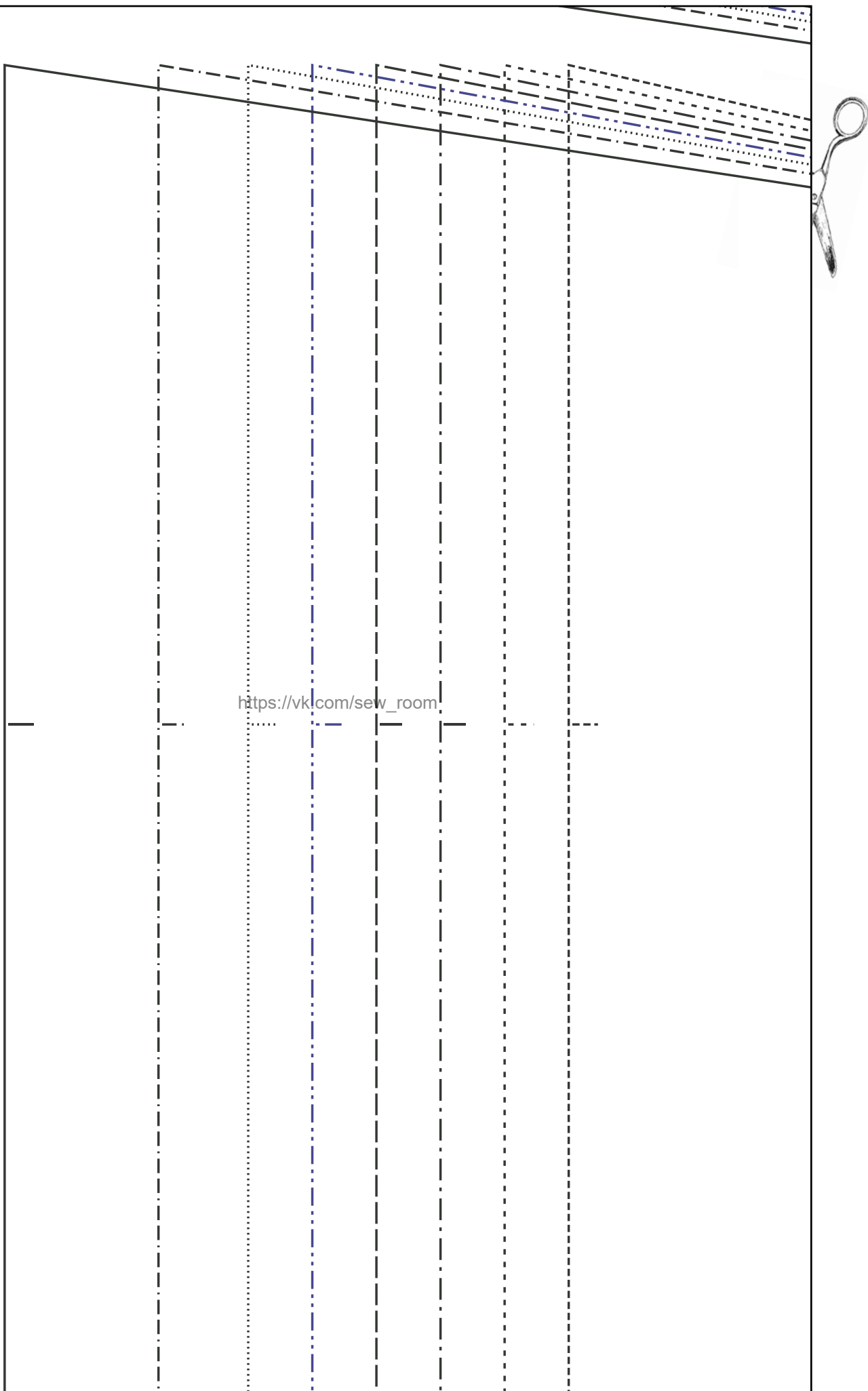
COLOUR BLOCK SUN DRESS  
SKIRT RIGHT HAND SIDE BOTTOM PANE  
CUT 2 COPIES (NOT MIRRORED)  
IN COLOUR/FABRIC 3

1.5CM SEAM ALLOWANCE INC

18



[https://vk.com/sew\\_room](https://vk.com/sew_room)



[https://vk.com/sew\\_room](https://vk.com/sew_room)



20



[https://vk.com/sew\\_room](https://vk.com/sew_room)



MY HANDMADE  
WARDROBE

COLOUR BLOCK SUN DRESS  
SKIRT LETHAND SIDE BOTTOM PANEL  
CUT 2 COPIES (NOT MIRRORED)  
IN COLOUR/FABRIC 2

1.5CM SEAM ALLOWANCE INC.





[https://vk.com/sew\\_room](https://vk.com/sew_room)



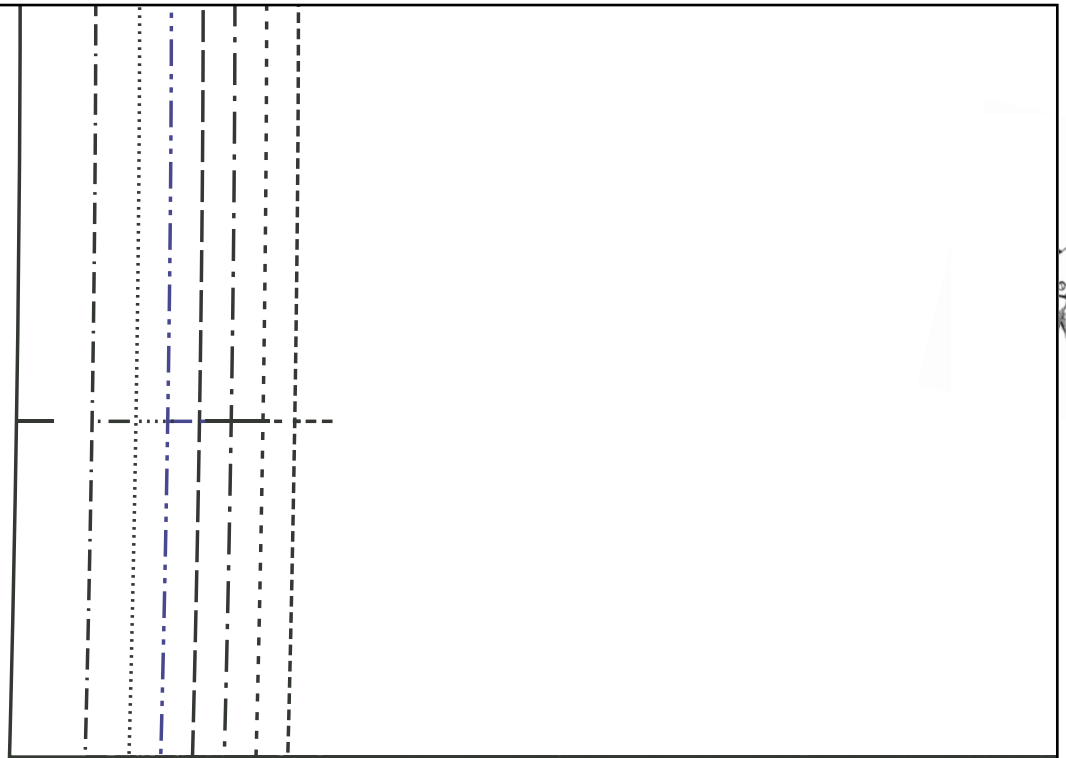
[https://vk.com/sew\\_room](https://vk.com/sew_room)



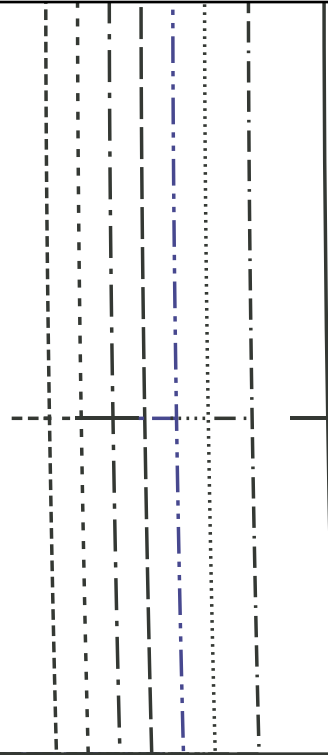
MY HANDMADE  
WARDROBE



23



[https://vk.com/sew\\_room](https://vk.com/sew_room)



[https://vk.com/sew\\_room](https://vk.com/sew_room)



[https://vk.com/sew\\_room](https://vk.com/sew_room)

26

ROOM SEAM ALLOWANCE INC.

G



[https://vk.com/sew\\_room](https://vk.com/sew_room)



MY HANDMADE  
WARDROBE

COLOUR BLOCK SUN DRESS  
SKIRT RIGHT HAND SIDE TOP PANEL  
CUT 2 COPIES (NOT MIRRORED)  
IN COLOUR/FABRIC 2



27



[https://vk.com/sew\\_room](https://vk.com/sew_room)

# 28



[https://vk.com/sew\\_room](https://vk.com/sew_room)



29



[https://vk.com/sew\\_room](https://vk.com/sew_room)



MY HANDMADE  
WARDROBE

COLOUR BLOCK SUNDRESS  
STRAPS  
CUT 4  
IN COLOUR/FABRIC 2

1.5CM SEAM ALLOWANCE

0



[https://vk.com/sew\\_room](https://vk.com/sew_room)

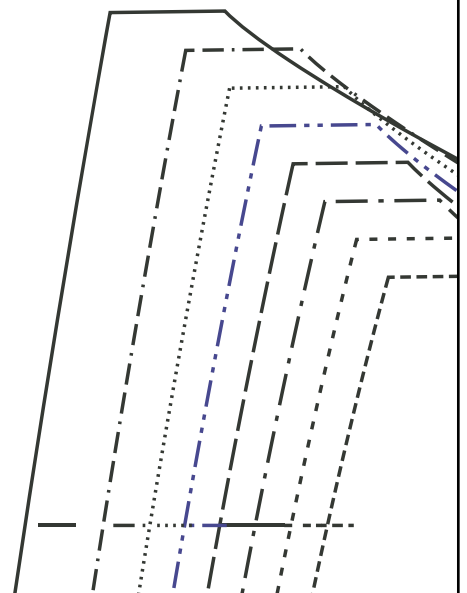
COLOUR BLOCK SUN DRESS  
31 SKIP 1 CENTRE BOTTOM PANEL  
CUT 2 COPIES (NOT MIRRORED)  
IN COLOUR/FABRIC 4

1.5CM SEAM ALLOWANCE INC.

D

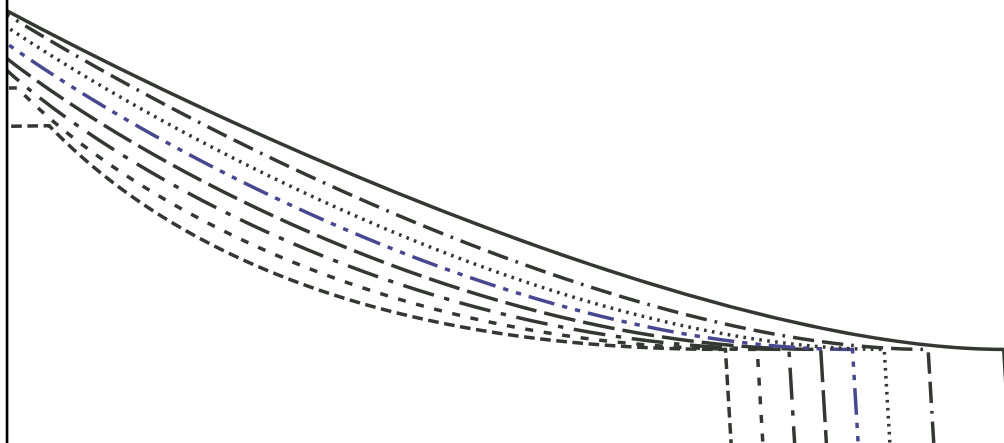


[https://vk.com/sew\\_room](https://vk.com/sew_room)





[https://vk.com/sew\\_room](https://vk.com/sew_room)





[https://vk.com/sew\\_room](https://vk.com/sew_room)



[https://vk.com/sew\\_room](https://vk.com/sew_room)



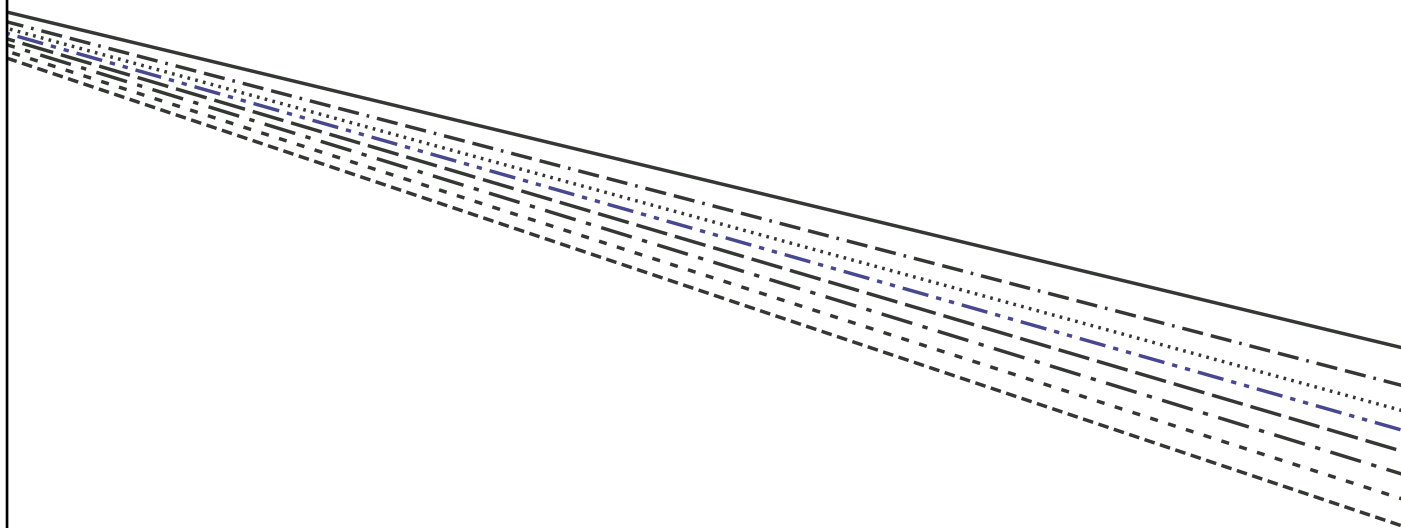
35

1.5CM SEAM ALLOWANCE INC.

E

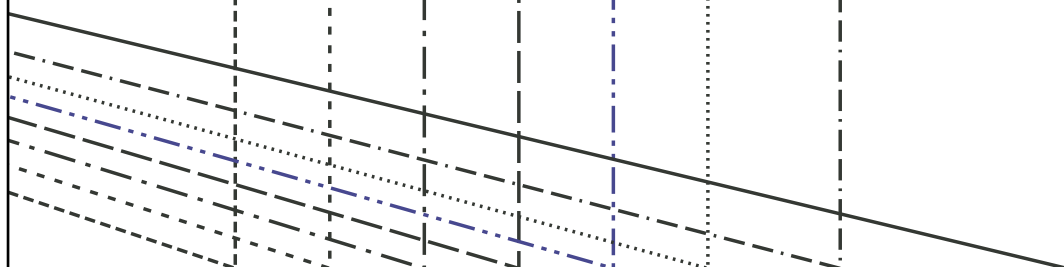


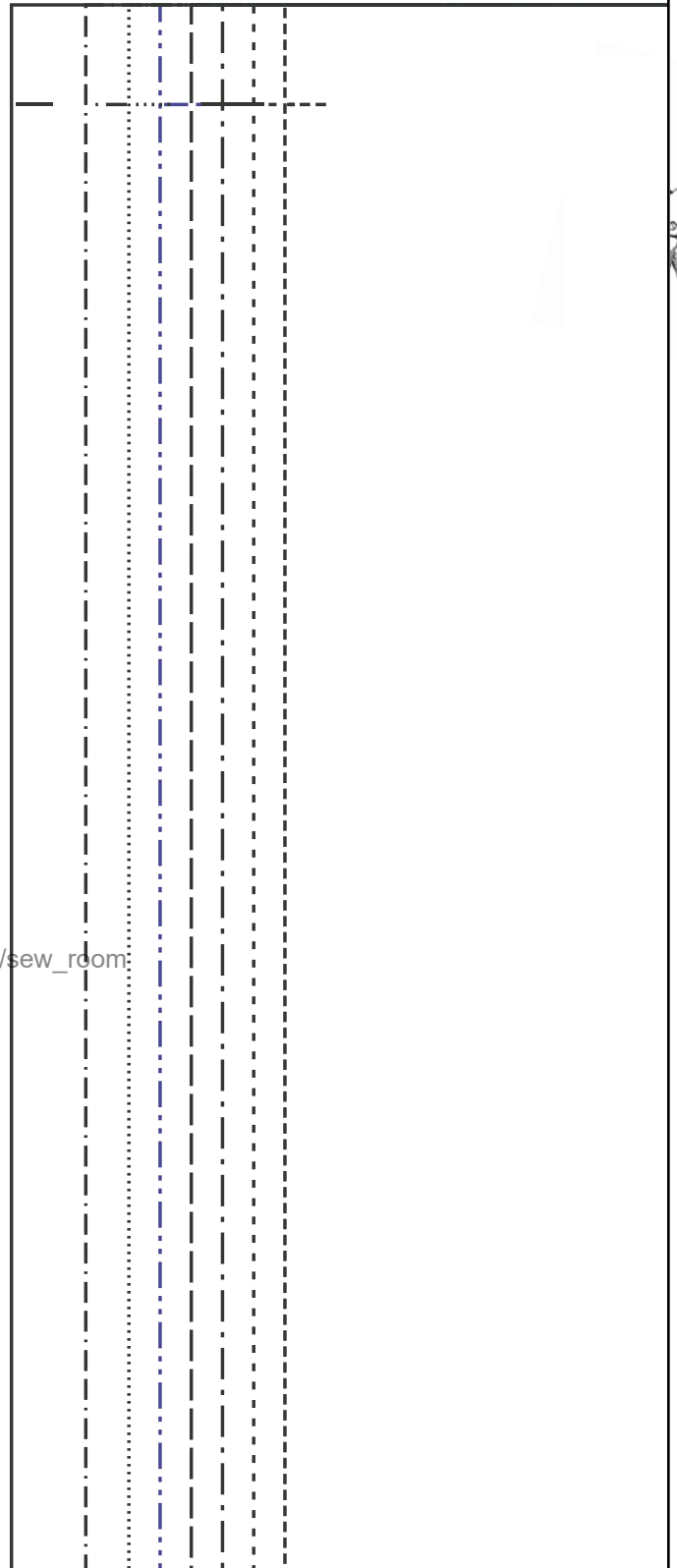
[https://vk.com/sew\\_room](https://vk.com/sew_room)





[https://vk.com/sew\\_room](https://vk.com/sew_room)

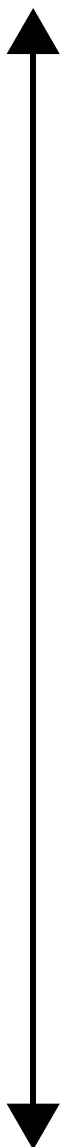




[https://vk.com/sew\\_room](https://vk.com/sew_room)



[https://vk.com/sew\\_room](https://vk.com/sew_room)



MY HANDMADE  
WARDROBE

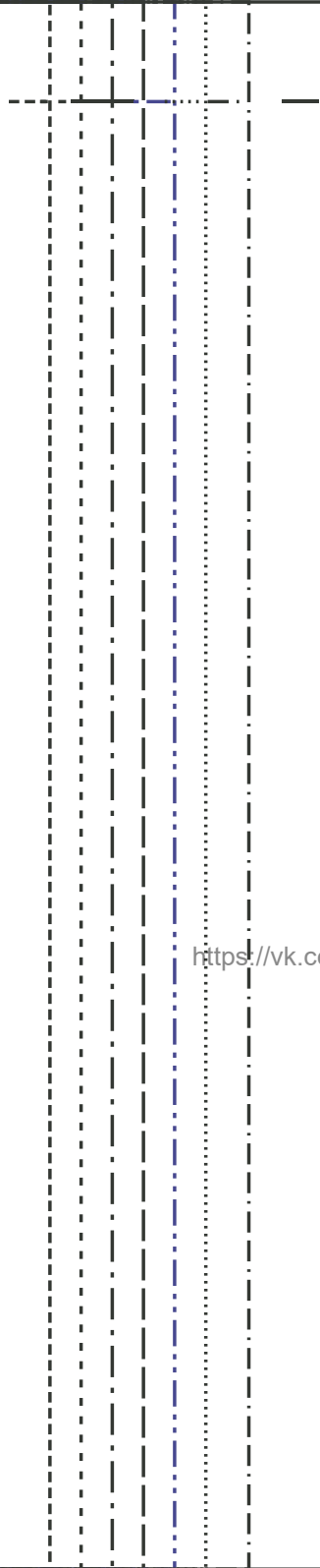
COLOUR BLOCK SUN DRESS  
BODICE BACK SHIRRED PANEL  
CUT 1

IN COLOUR/FABRIC [https://vk.com/sew\\_room](https://vk.com/sew_room)

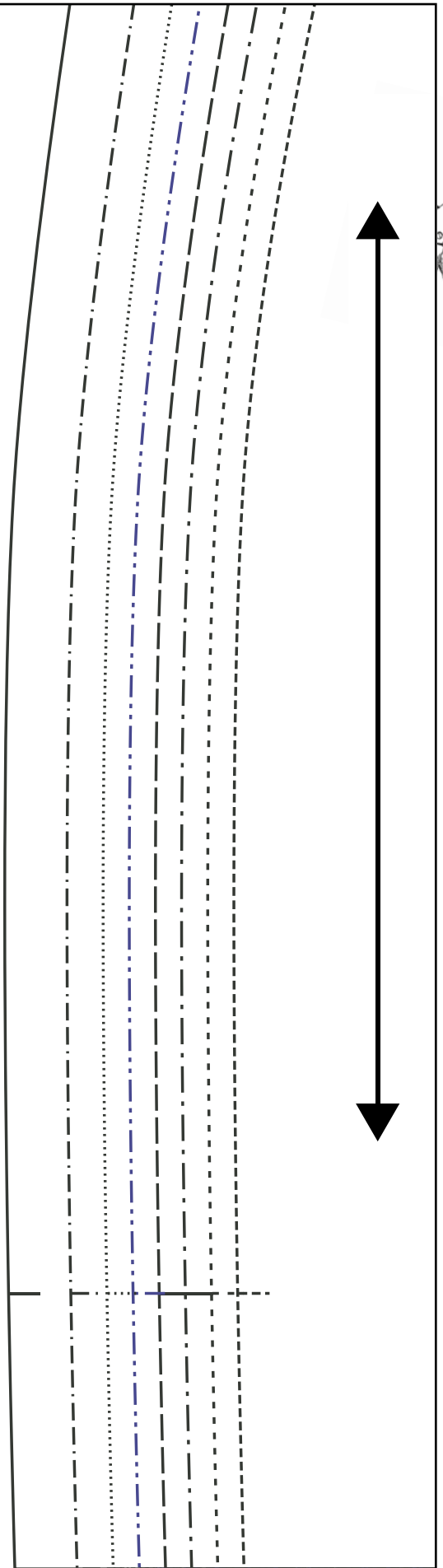
1.5CM SEAM ALLOWANCE INC.

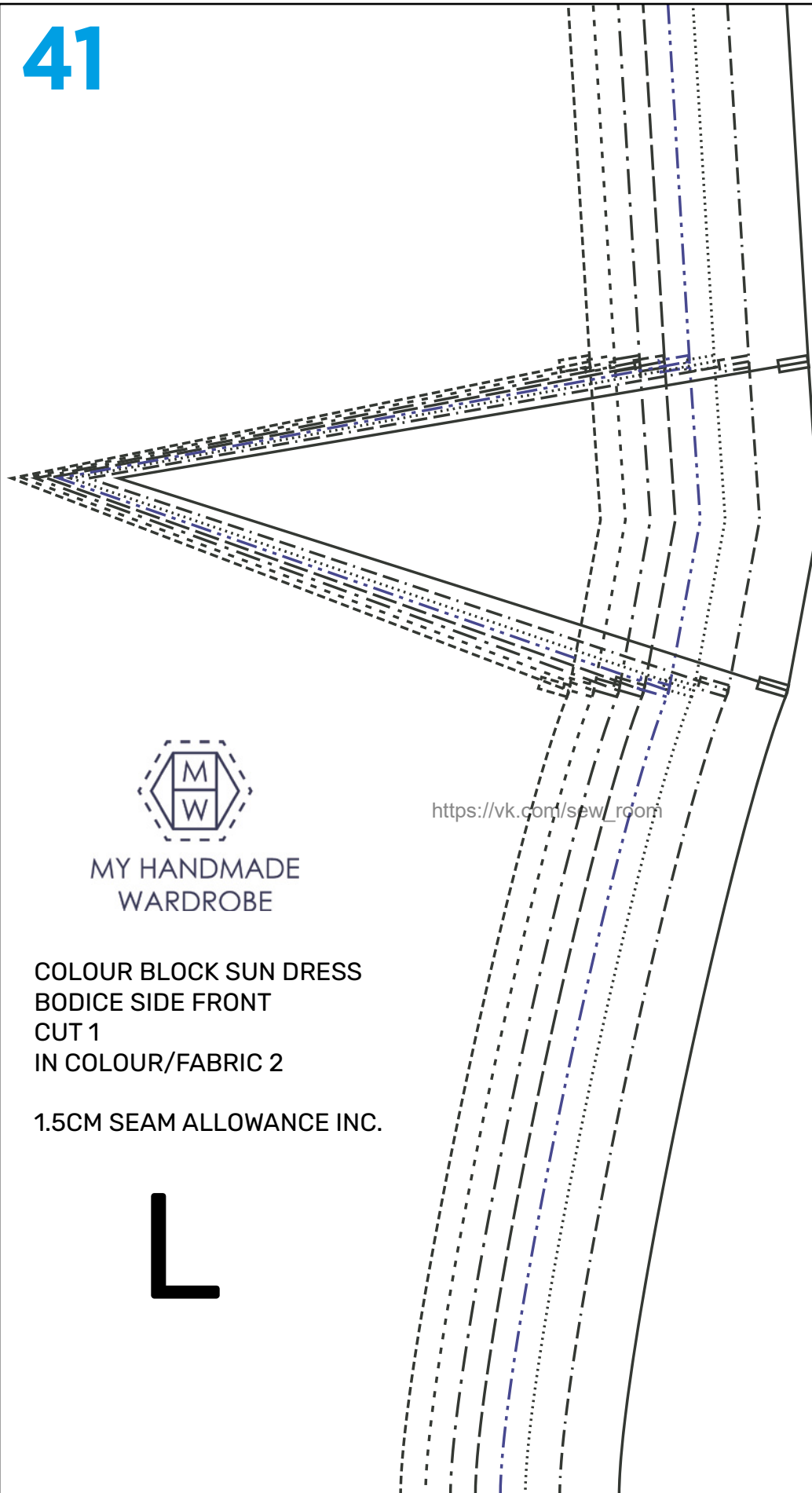
# H

40



[https://vk.com/sew\\_room](https://vk.com/sew_room)





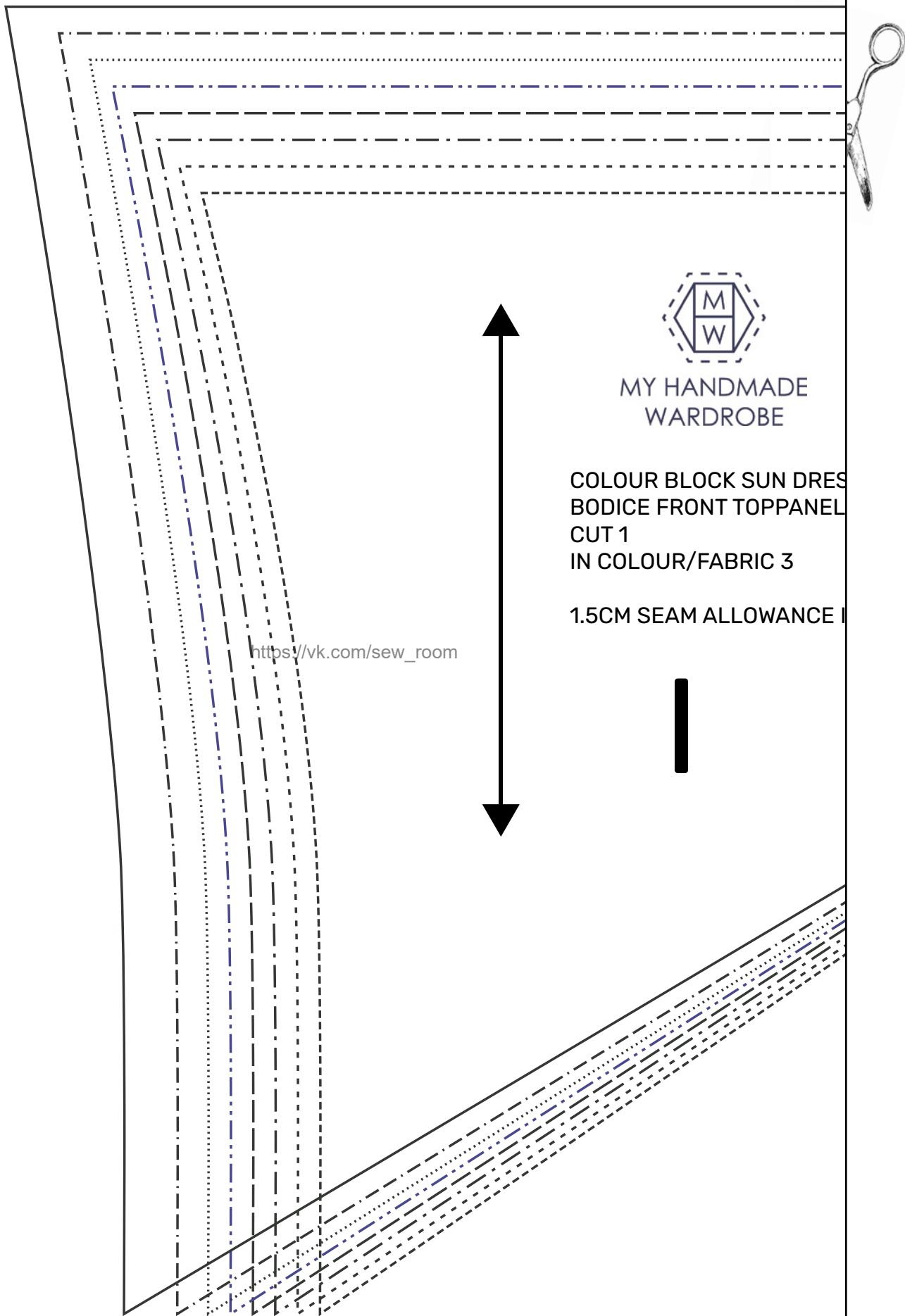
MY HANDMADE  
WARDROBE

[https://vk.com/sew\\_room](https://vk.com/sew_room)

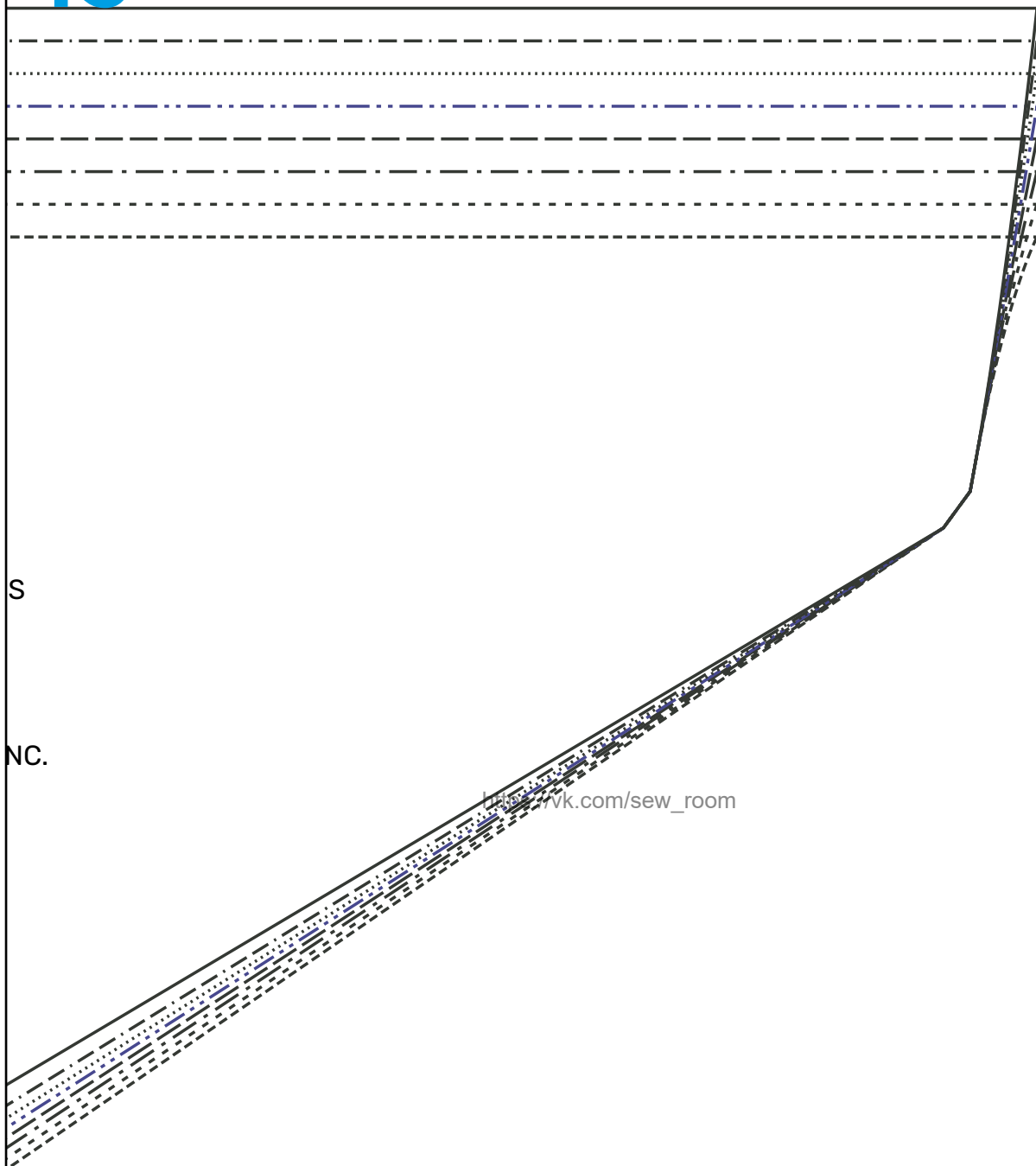
COLOUR BLOCK SUN DRESS  
BODICE SIDE FRONT  
CUT 1  
IN COLOUR/FABRIC 2

1.5CM SEAM ALLOWANCE INC.







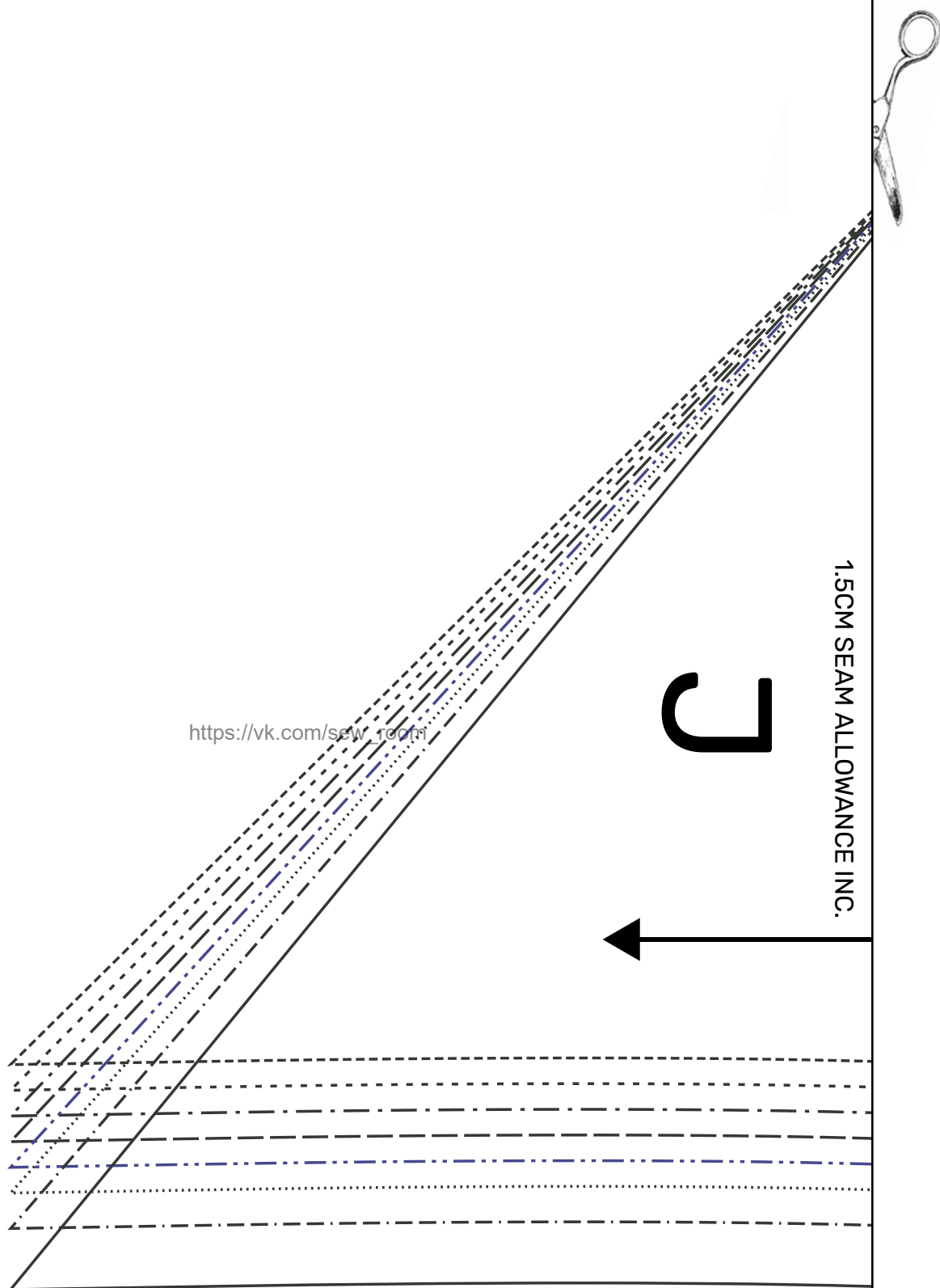


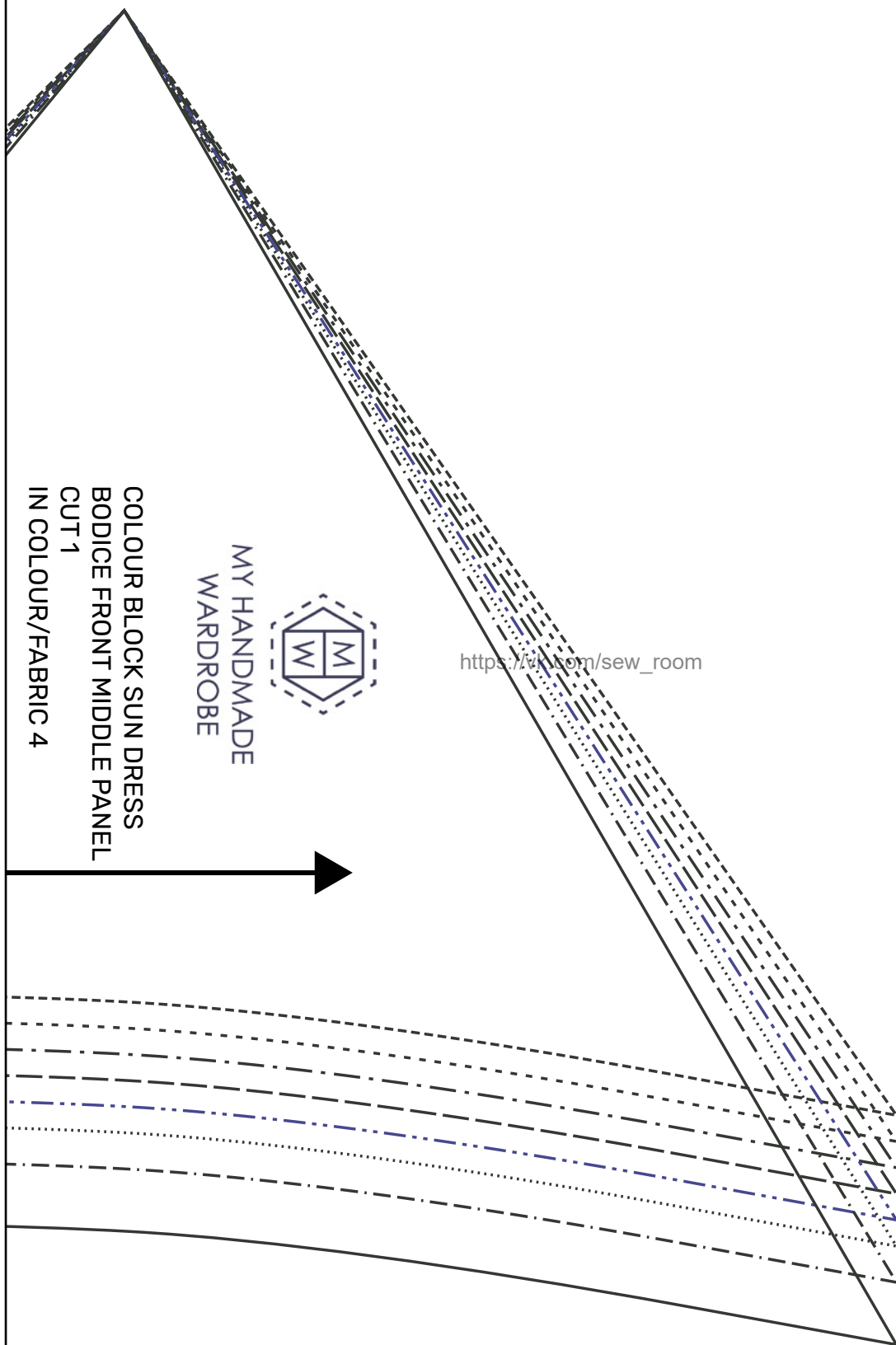
S

NC.

[http://www.sew\\_room.com](http://www.sew_room.com)







[https://www.sew\\_room.com](https://www.sew_room.com)



MY HANDMADE  
WARDROBE

COLOUR BLOCK SUN DRESS  
BODICE FRONT MIDDLE PANEL  
CUT 1  
IN COLOUR/FABRIC 4

