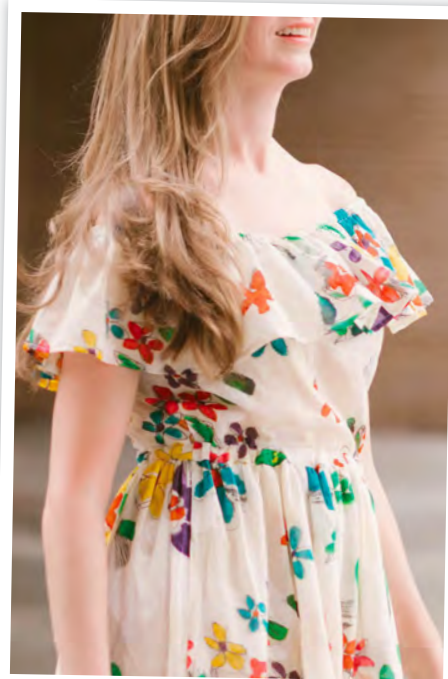
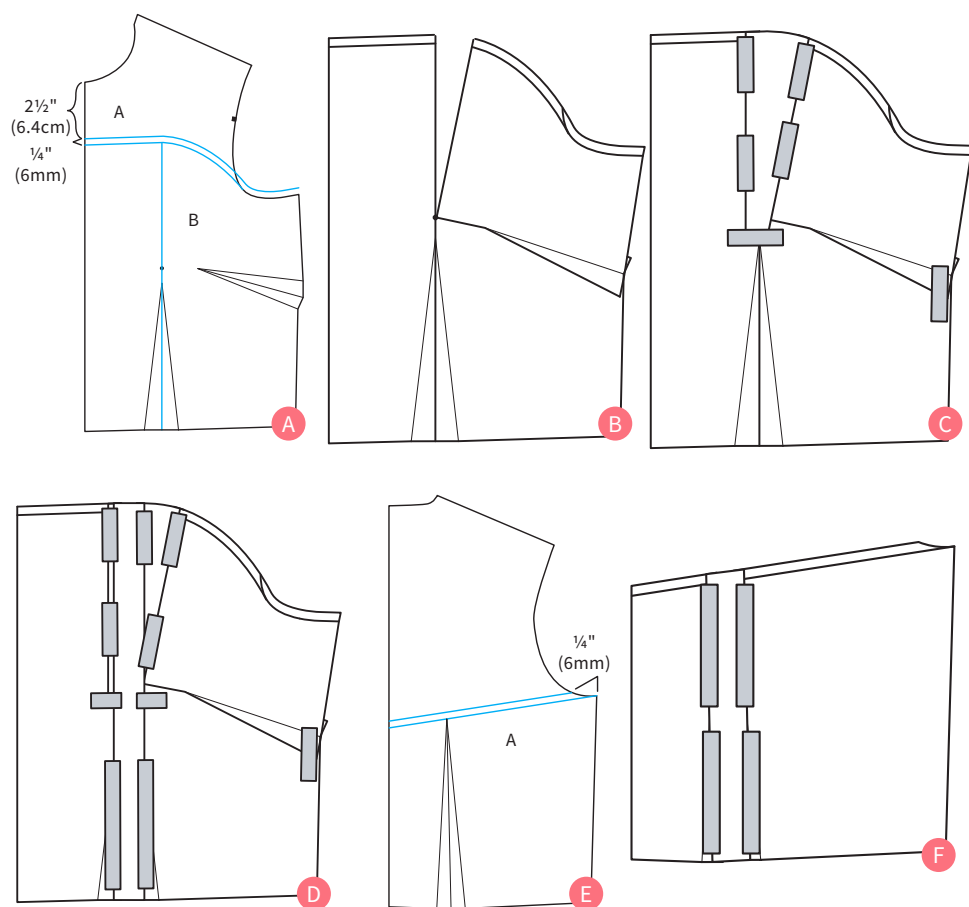


The Sutton OFF-THE-SHOULDER *dress*



Halfway between nautical and Parisian chic, sew up some Riviera style with an on-trend ruffle front dress while planning your escape to Saint-Tropez

Project **MELISSA MORA** Melly Sews
Photography **ALISON EDEN COPELAND**



Размеры

Size	Bust	Waist	Neck to Waist
0	31"	26"	14 1/2"
2	32"	27"	15"
4	33"	28"	15 1/4"
6	34"	29"	15 1/2"
8	35"	30"	15 3/4"
10	36"	31"	16"
12	37"	32"	16 1/4"
14	39"	34"	16 1/2"
16	40"	36"	16 3/4"
18	42"	38"	17"
20	43"	40"	17 1/4"
22	45"	41"	17 1/2"

FABRIC REQUIREMENTS: Резинка в плечи

Size	45" wide	58/60" wide	Size	Measurement
0	3 yd	3 yd	0	37 1/2"
2	3 yd	3 yd	2	38"
4	3 yd	3 yd	4	38 1/2"
6	3 yd	3 yd	6	39"
8	4 yd	3 yd	8	39 1/2"
10	4 yd	3 yd	10	40"
12	4 yd	3 yd	12	40 1/2"
14	4 1/3 yd	3 yd	14	41"
16	4 1/3 yd	3 yd	16	42"
18	4 1/3 yd	3 yd	18	43"
20	4 1/3 yd	4 yd	20	44"
22	4 1/3 yd	4 yd	22	45"

Skill level ♥♥

MATERIALS:

- ♥ light- to medium-weight woven fabric such as cotton or double gauze
- ♥ 3 yards 3/8"-wide elastic
- ♥ 1 pack of single-fold bias tape
- ♥ templates downloaded from www.lovesewingmag.co.uk

How to make

- 1 Измените переднюю часть лифа. (См. рис. A.) Сделайте отметку (A) на расстоянии 2 1/2 дюйма вниз по центру выреза горловины переда. Продлите центральную линию (B) поясной вытачки вверх через точку груди и примерно на 5 дюймов дальше. Нарисуйте горизонтальную линию от отметки A до линии B, которая изгибается вниз к пройме после достижения линии B. Добавьте припуск на шов 1/4 дюйма вдоль нового выреза горловины.
- 2 Cut out the new bodice shape, then cut down line B to the bust point. Pivot this piece until the dart legs are on top of each other, to transfer the bust dart fullness to the neckline. (See Pic B.) Paper over the dart created on the neckline. (See Pic C.) Slash the entire pattern along the centre of the waist dart and spread pieces 1/2" apart. Paper over the gap. (See Pic D.)

- 3 Modify the back bodice. Draw a line (A) from the point of the armhole to the centre back, touching the top point of the back dart. Add a 1/4" casing allowance along the new neckline. (See Pic E.) Slash the entire pattern along the centre of the waist dart and spread pieces 1/2" apart. Paper over the gap. (See Pic F.)

- 4 Вырезать деталь переда и спинки со сгибом

- 5 Для юбки, вырежьте два прямоугольника для длины юбки миди и ширины, в 1,5 раза превышающей обхват талии. Возможно, вам придется соединить три части вместе для больших размеров, чтобы получить правильную ширину..

- 6 Для оборки вырежьте два прямоугольника ткани высотой 7 1/2 дюймов и шириной, равной длине резинки, указанной в таблице.

- 7 With the ruffle pieces RST sew both side seams. Finish the raw edges.

- 8 Hem the bottom edge of the ruffle by folding 1/4" to the WS twice and sewing in place.

THE SUTTON OFF-THE-SHOULDER DRESS

9 Fold the top edge of the ruffle ¼" to the WS and press. Fold again, ½" to the WS to form a narrow casing. Stitch close to the folded edge, leaving an opening to insert elastic.

10 Cut a piece of ¾"-wide elastic to the length on the elastic chart. Use a safety pin to insert it in the ruffle casing, being careful not to twist it.

11 Overlap the edges of the elastic ½" and stitch together. Sew the opening closed. (See Pic G.)

12 Place front and back bodice pieces RST. Sew the side seams and finish the raw edges. (See Pic H.)

13 Pin an unfolded piece of single-fold bias tape all around the neckline of the bodice, RST, starting at the centre back. Fold the short ends of the bias tape ¼" to the WS at the beginning and end. Stitch along the crease line closest to the edge (See Pic I.) then turn bias tape to the WS of the bodice. Sew close to the folded edge to form a casing. (See Pic J.)

14 Cut a piece of ¾"-wide elastic to the high bust measurement. Using a safety pin, insert elastic in casing starting at centre back, being careful not to twist. (See Pic K.)

15 Overlap the edges of the elastic ½" and stitch together. Stitch down the short edges of the bias tape, anchoring the elastic at centre back.

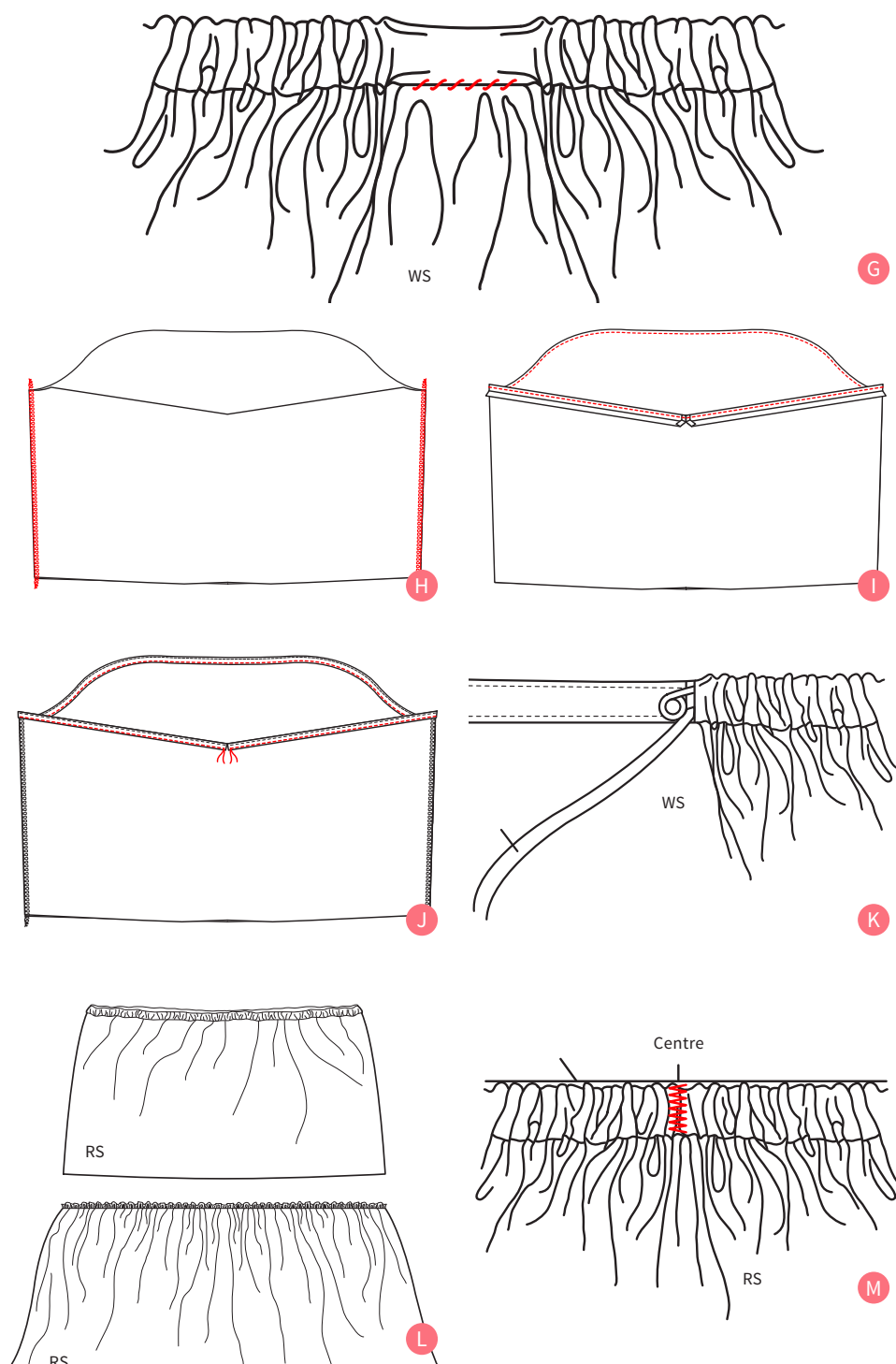
16 Place the skirt pieces RST. Sew the side seams and finish the raw edges. Fold the skirt hem ½" to the WS twice and sew the hem.

17 Gather the skirt to the same width as the bottom of the bodice. (See Pic L.)

18 Turn the bodice WS out. Put the skirt RS out inside the bodice, matching the side seams. Pin in place and sew the waist seam.

19 Turn through so the bodice is now inside the skirt. Begin to bind the waistline seam with bias binding by aligning the raw waistband seam with the bias edge. Sew in place, overlapping the ends.

20 Press the bias tape and waist seam allowance up toward the bodice to form a ½" casing. Stitch close to the edge, leaving an opening to insert the elastic. Your stitching will show on the RS, so use co-ordinating thread.

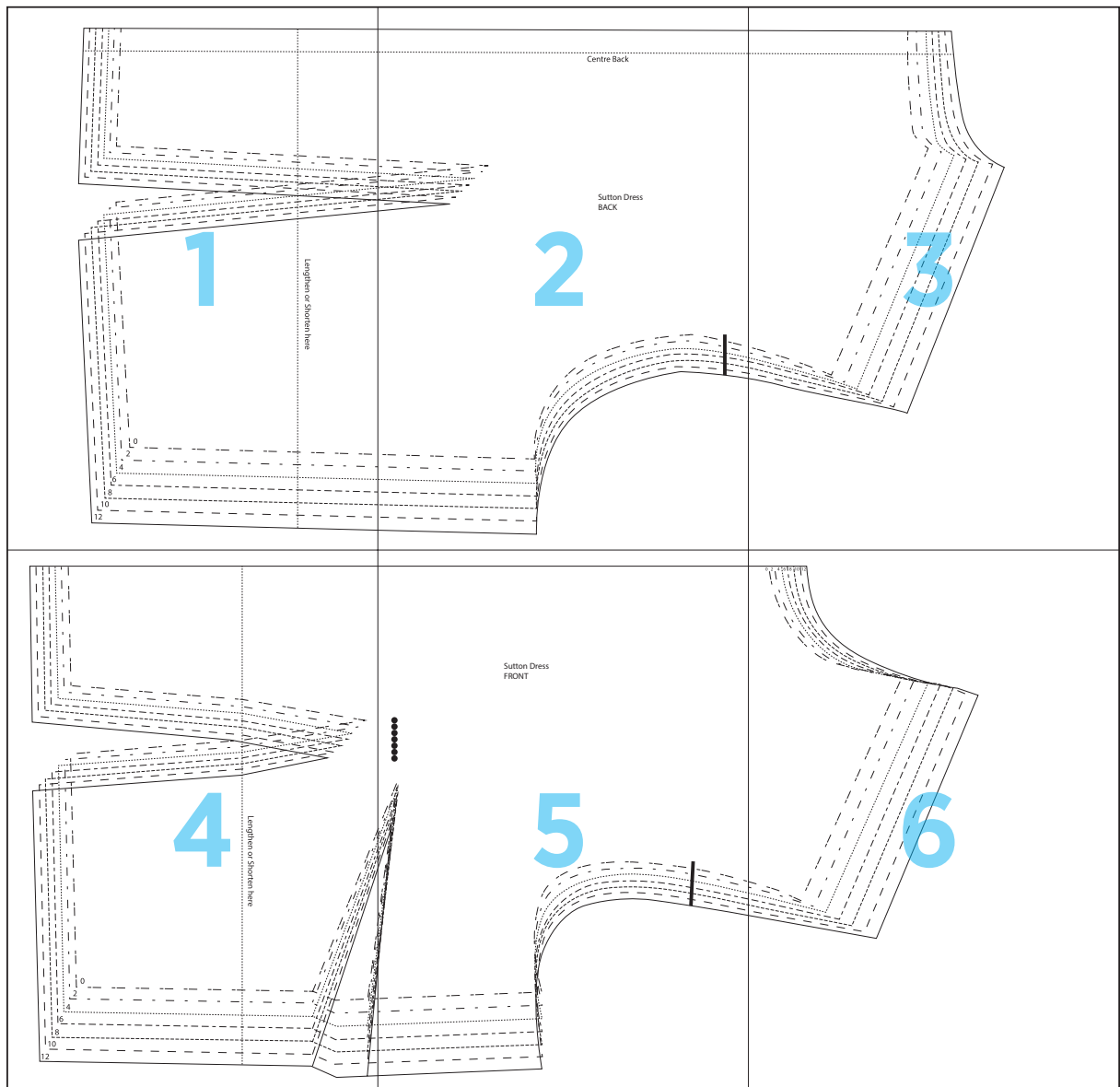


21 Cut a piece of ¾" elastic to the waist measurement. Using a safety pin, insert elastic in casing. Overlap the edges of the elastic ½" and stitch together, then sew the opening closed.

22 Place the ruffle over the bodice, WS of the

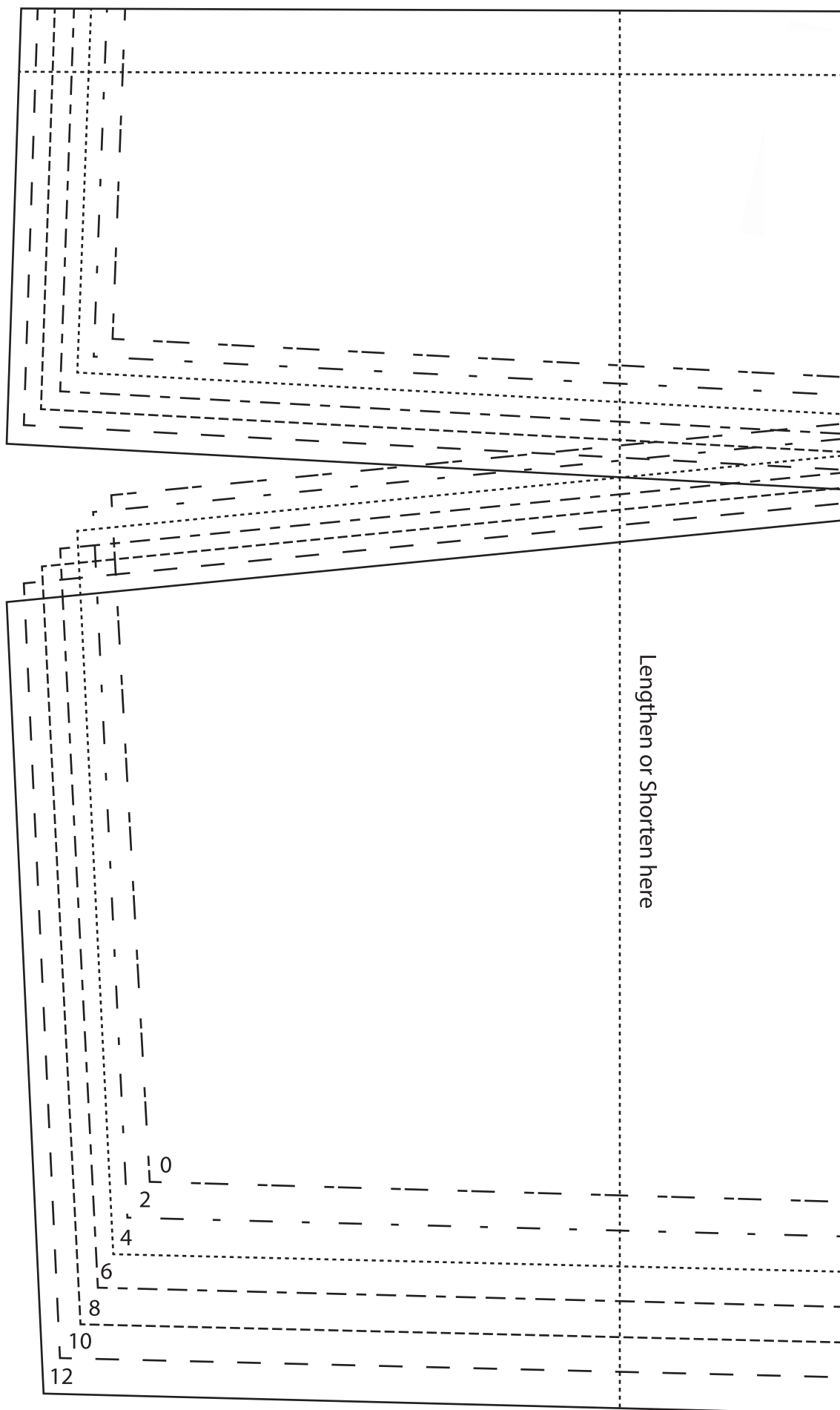
ruffle to the right side of the bodice, matching the side seams. Stitch the ruffle to the bodice in a vertical line at the centre front and centre back, back stitching a few times to make sure it is secure. (See Pic M.) This will prevent sliding inside the casing and leaves the ruffle free to be worn on or off the shoulder.

The Sutton Dress



1

1"
Square



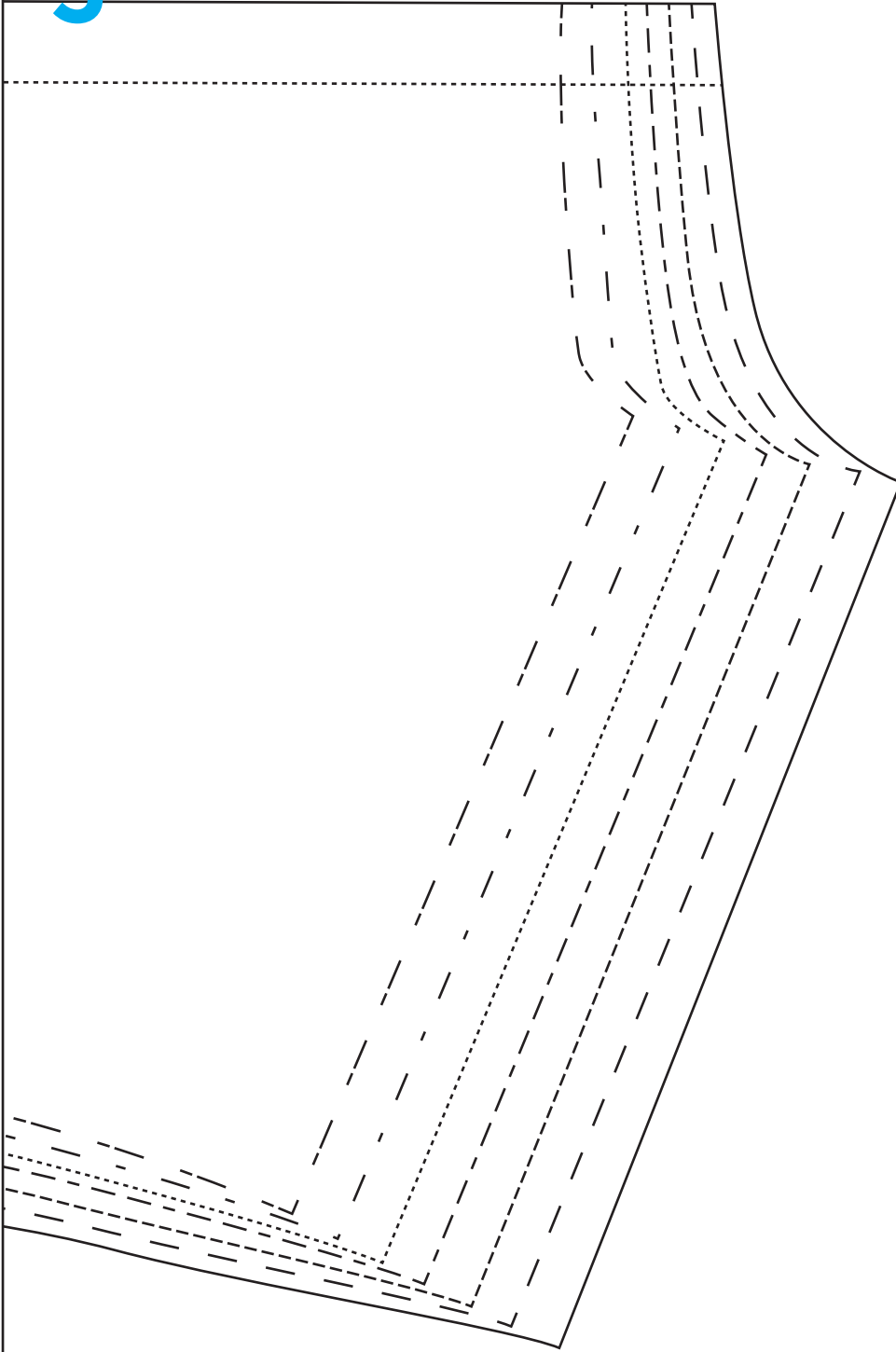
2

Centre Back

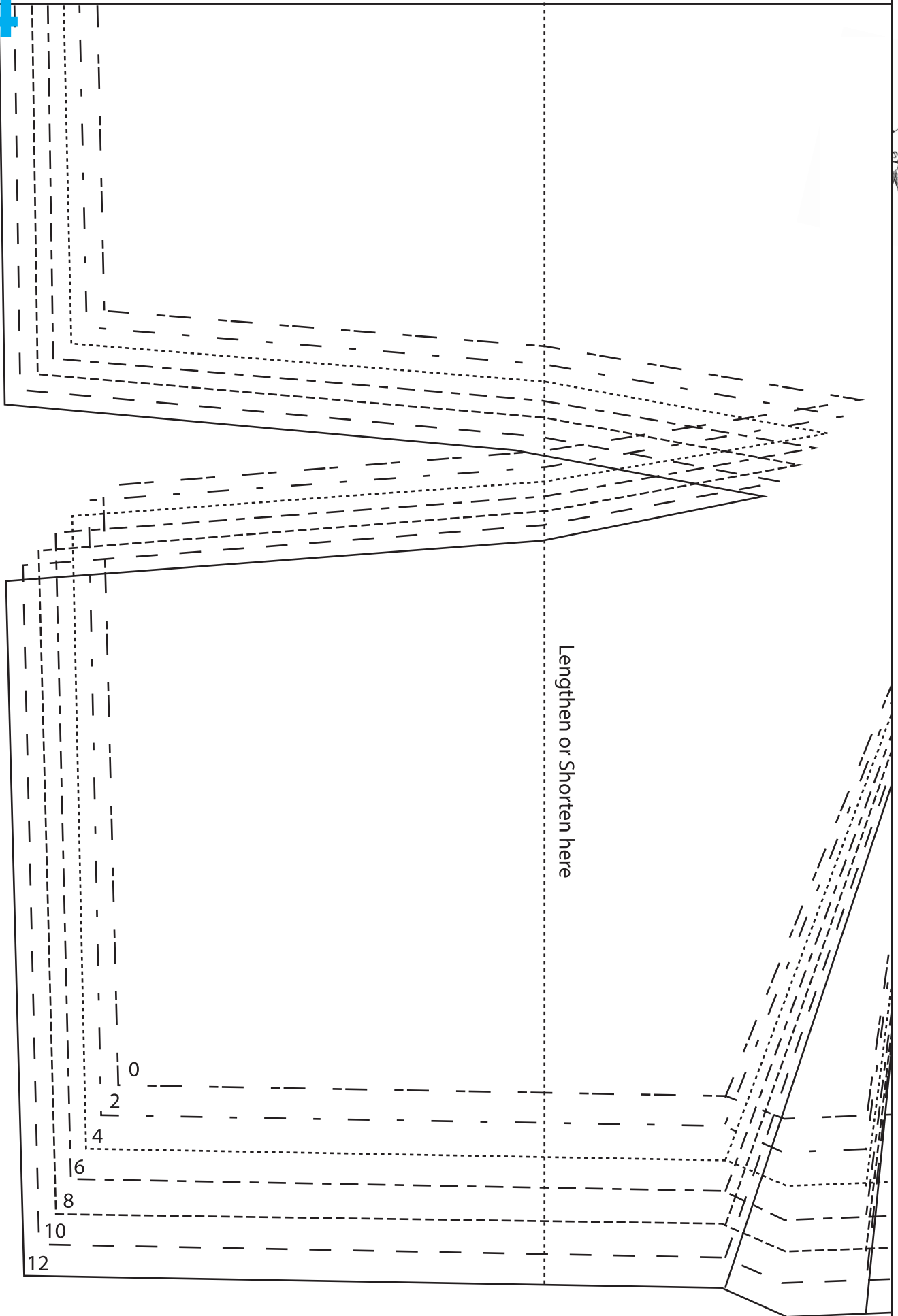
Sutton Dress
BACK



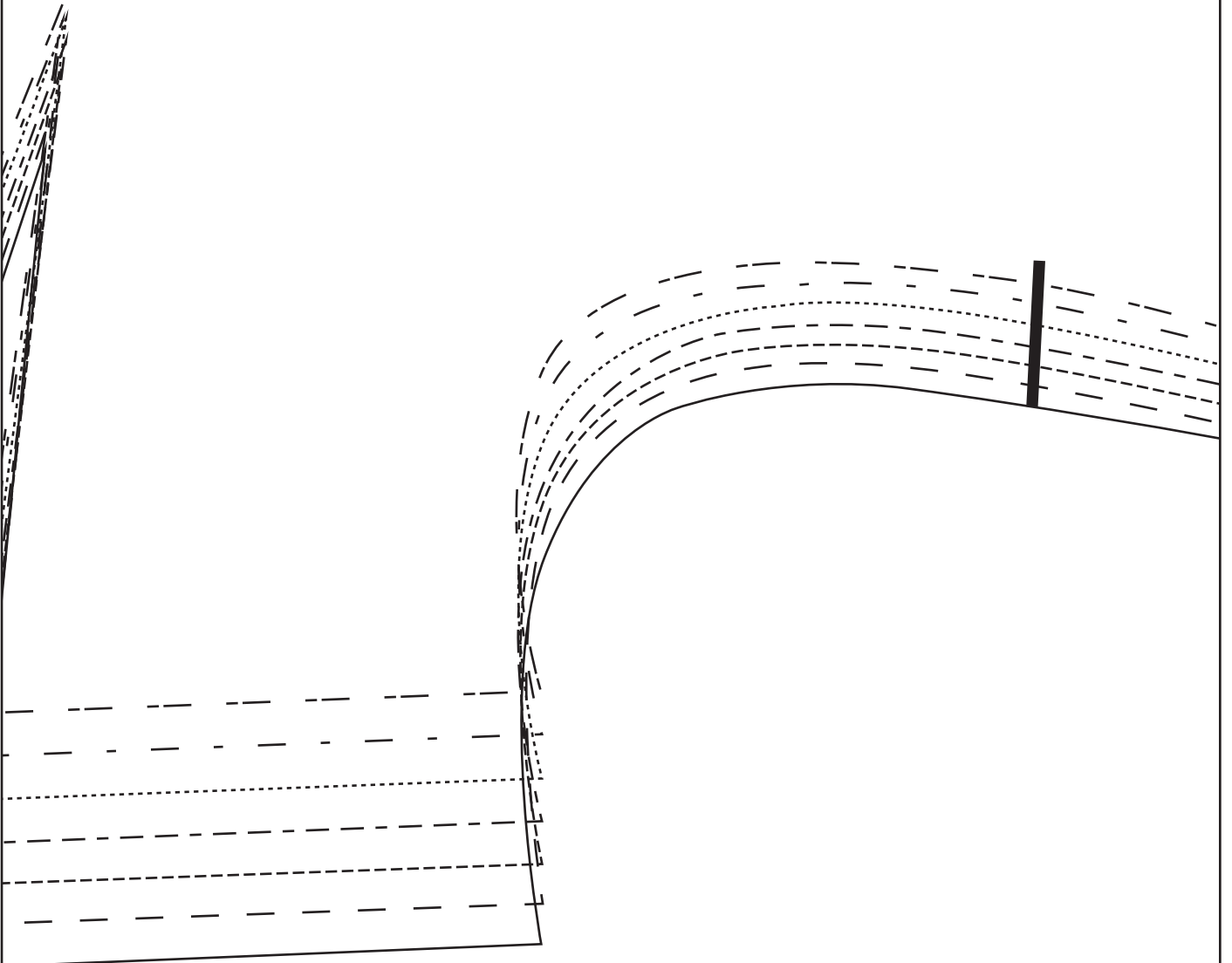
3



4



Sutton Dress
FRONT



6

2 4 6 8 10 12

