



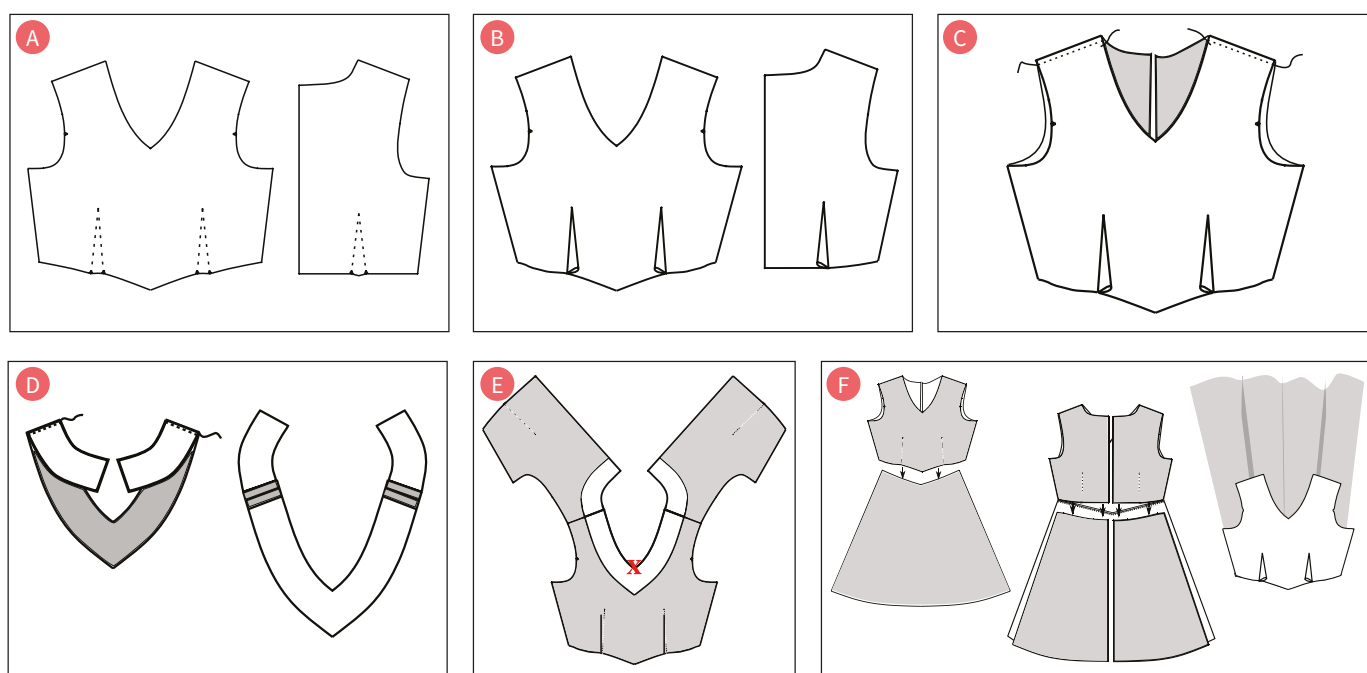
Classic **ПЛАТЬЕ**

Easily made in a weekend, this
is the perfect dress for layering with
your favourite cardigan

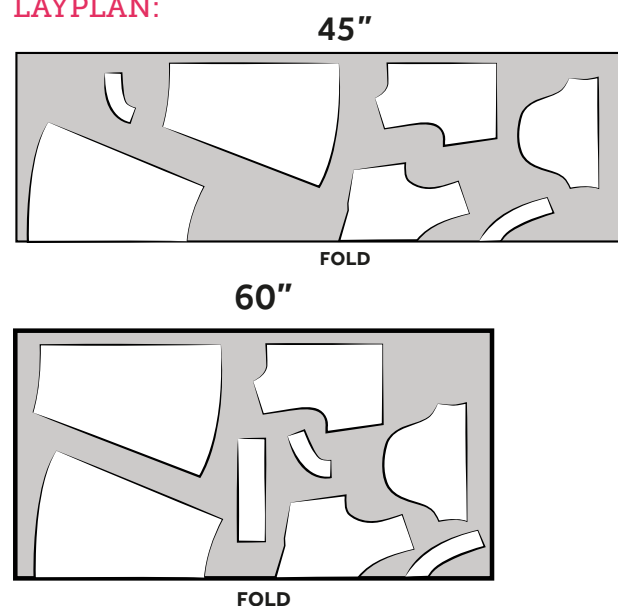
Project **CLAIRE GARSIDE**

Shopping list

Mirabelle Peachskin crêpe
£5 per metre
www.sewoverit.co.uk



LAYPLAN:



MATERIALS & TOOLS:

- see fabric requirements table
- 50cm medium-weight interfacing
- 22" zip
- templates downloaded from www.craftworld.com/cms/love-sewing

FABRIC TYPES:

Woven fabric such as cotton, poplin, poly cotton, satin, Tana lawn, crêpe

HOW TO MAKE:

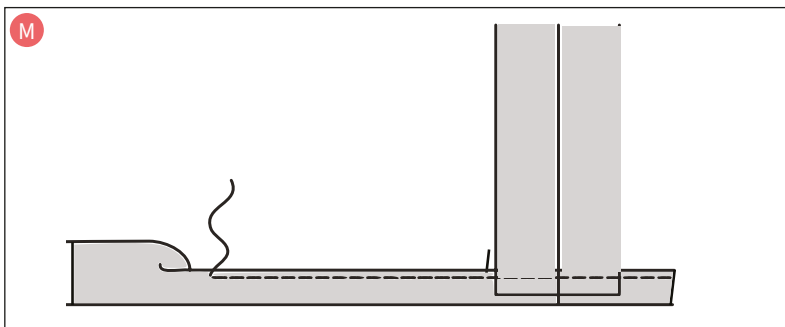
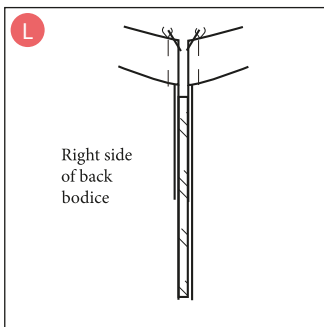
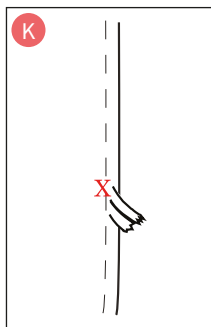
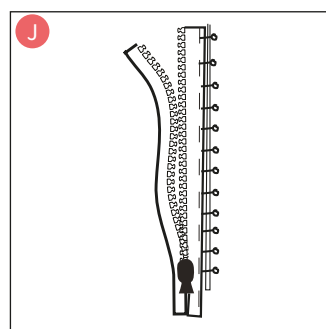
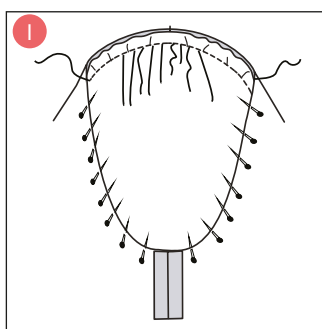
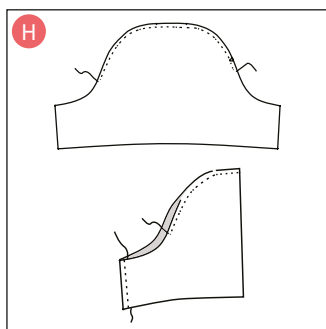
- 1 Mark the front and back darts on the wrong side of the fabric. (See Pic A.)
- 2 Stitch in the darts, starting at the widest point at the seam line and ending at the point. Do not back-stitch at the end; just leave a loose thread and tie it in a knot. Press the darts in the direction shown. (See Pic B.)
- 3 With RST, join front and back bodices together at the shoulders. (See Pic C.)
- 4 With RST, join front and back facings together. Press facings open. (See Pic D.)
- 5 With RST, stitch facings onto the bodice using 1cm seam allowance. At 'X', snip into seam allowance, stopping just before the stitch line. Turn facing through to the wrong side and press flat. (See Pic E.)
- 6 With RST, attach the front bodice to the front skirt using a 1cm seam allowance. Repeat for back bodice and back skirt. (See Pic F.)
- 7 With RST, stitch the dress together down the left side and then the right side. Press seams open. (See Pic G.)
- 8 Sew a line of gathering stitches along the sleeve head. With RST, stitch seam and press open. (See Pic H.)
- 9 With RST, set the sleeve into the armhole, pull the gathering stitches until the sleeve fits into the armhole.

FABRIC REQUIREMENTS:

SIZE	8	10	12	14	16	18	20
45" wide	1.9m	1.95m	2m	2.06m	2.12m	2.18m	2.24m
60" wide	1.9m	1.9m	1.9m	1.9m	1.9m	1.9m	1.9m

SIZING:

SIZE	8	10	12	14	16	18	20
Bust	33"	35"	37"	39"	41"	43"	45"
Waist	26"	28"	30"	32"	34"	36"	38"
Hips	36"	38"	40"	42"	44"	46"	48"



Stitch in place and press seam flat. (See Pic I.)

10 Pin one side of the zip in place with RST on the left-hand seam. Pin in place, then hand-tack to secure. Remove pins and change to a zipper foot and stitch as close as possible to the zip teeth, stitching as far down as you can. Repeat on the other side, ensuring the seams align when the zip is closed. (See Pic J.)

11 Turn the zip inside out from the last stitch you made on the zip 'X' and continue to stitch all the way down. (See Pic K.)

12 Fold the back facing over to the right side of dress and stitch down each side of the zip through the facing. Snip top corners and turn facing back through to the inside of the dress. Press flat. (See Pic L.)

13 Turn up the sleeve and bottom hem by 0.5cm and stitch in place. (See Pic M.)

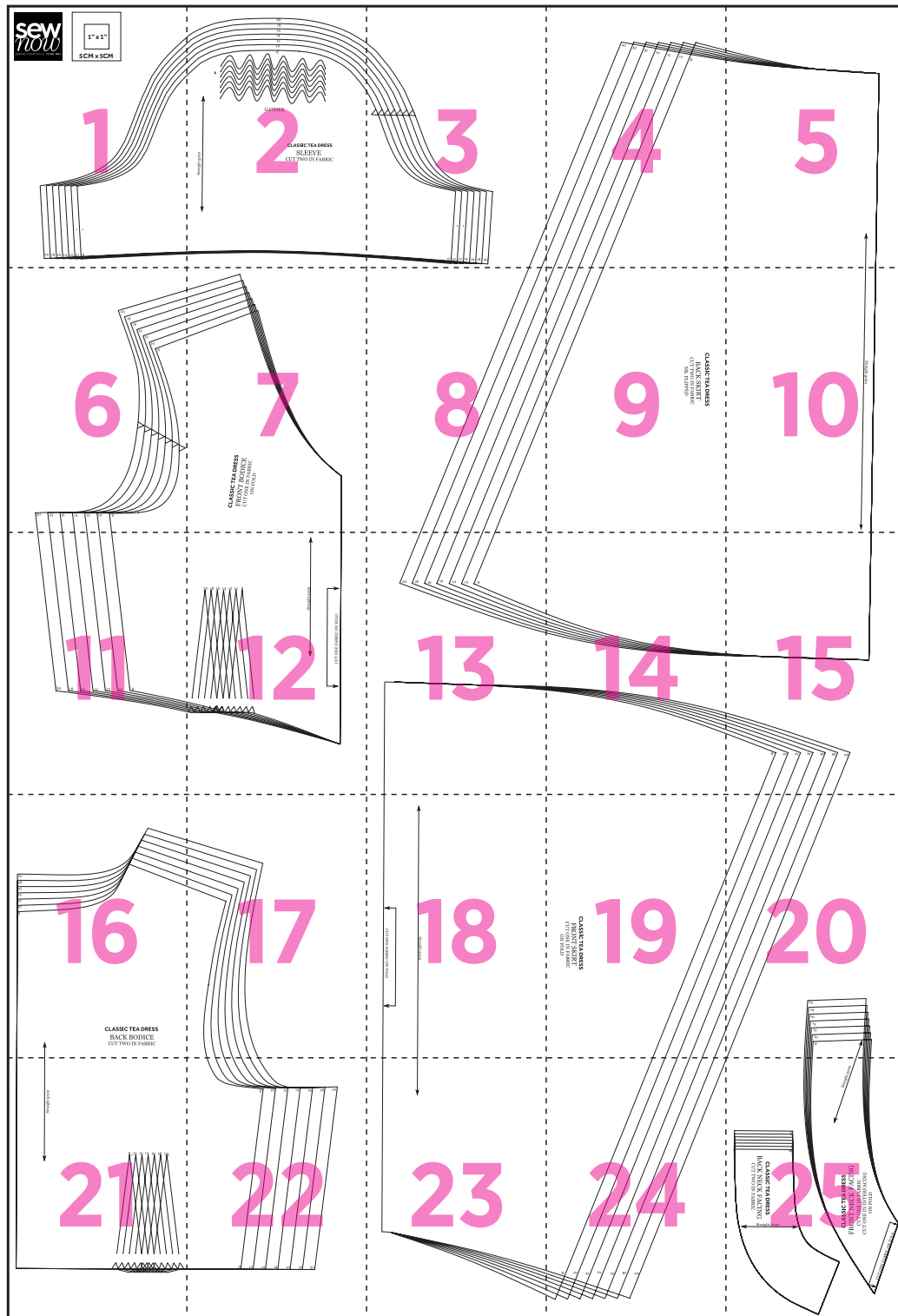
Top tip

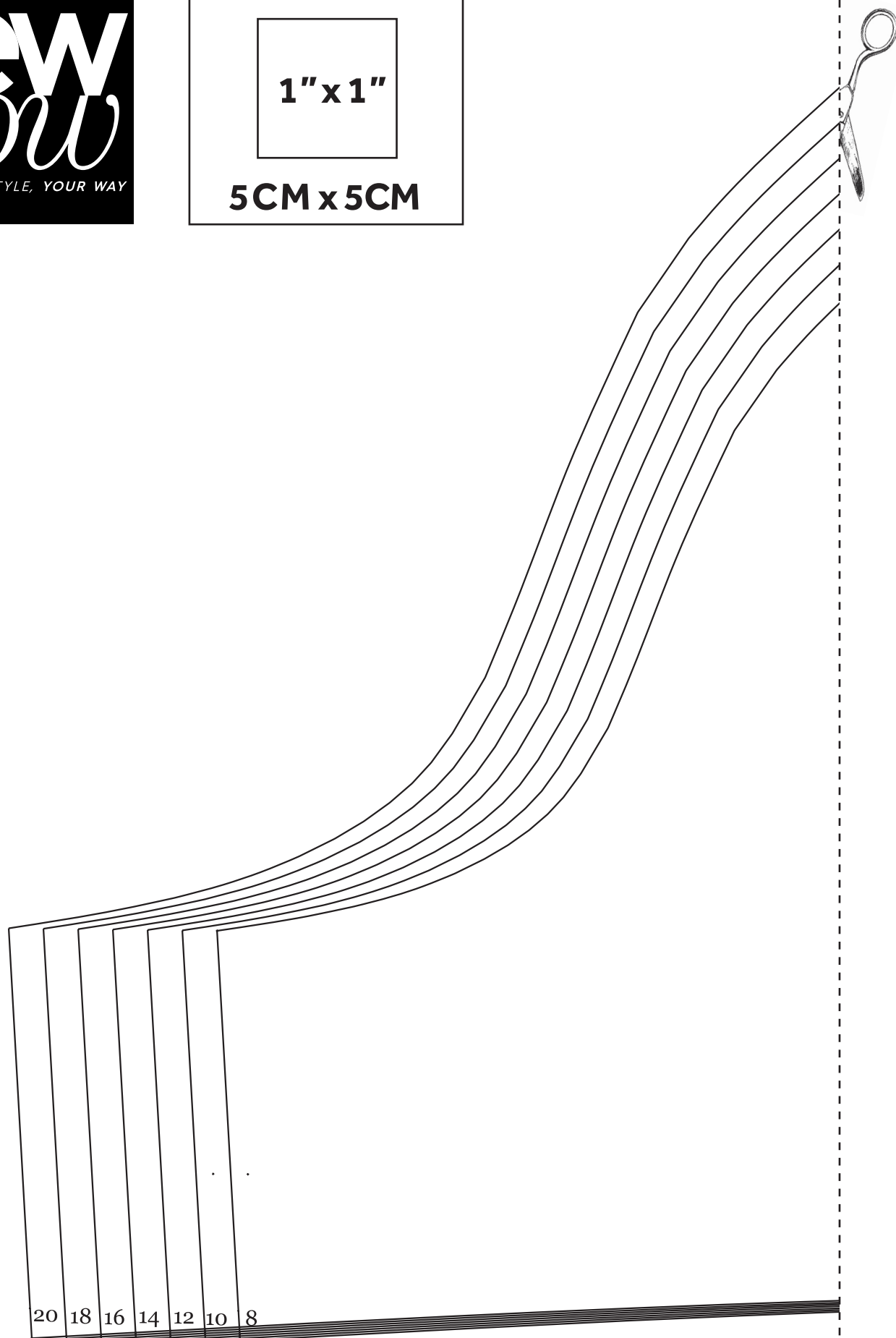
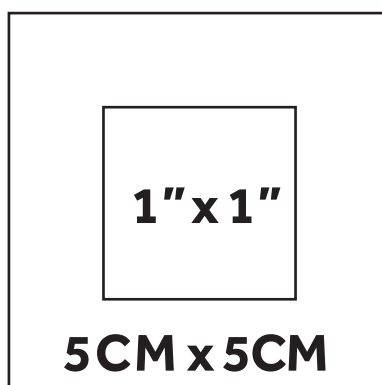
When gathering stitches on the sleeve head, ensure they sit within the seam allowance



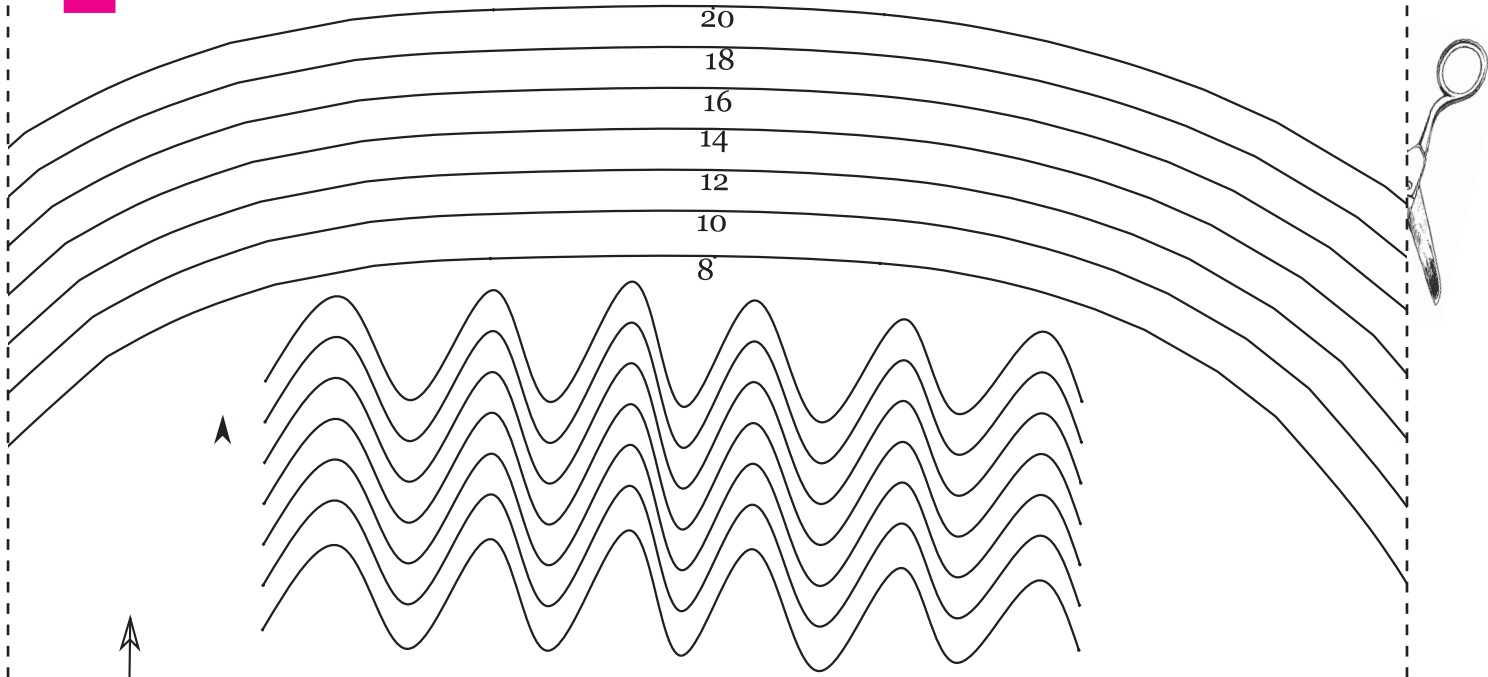
Why not add a lace trim to the sleeve or dress hem for pretty detail?

Классическое платье





2

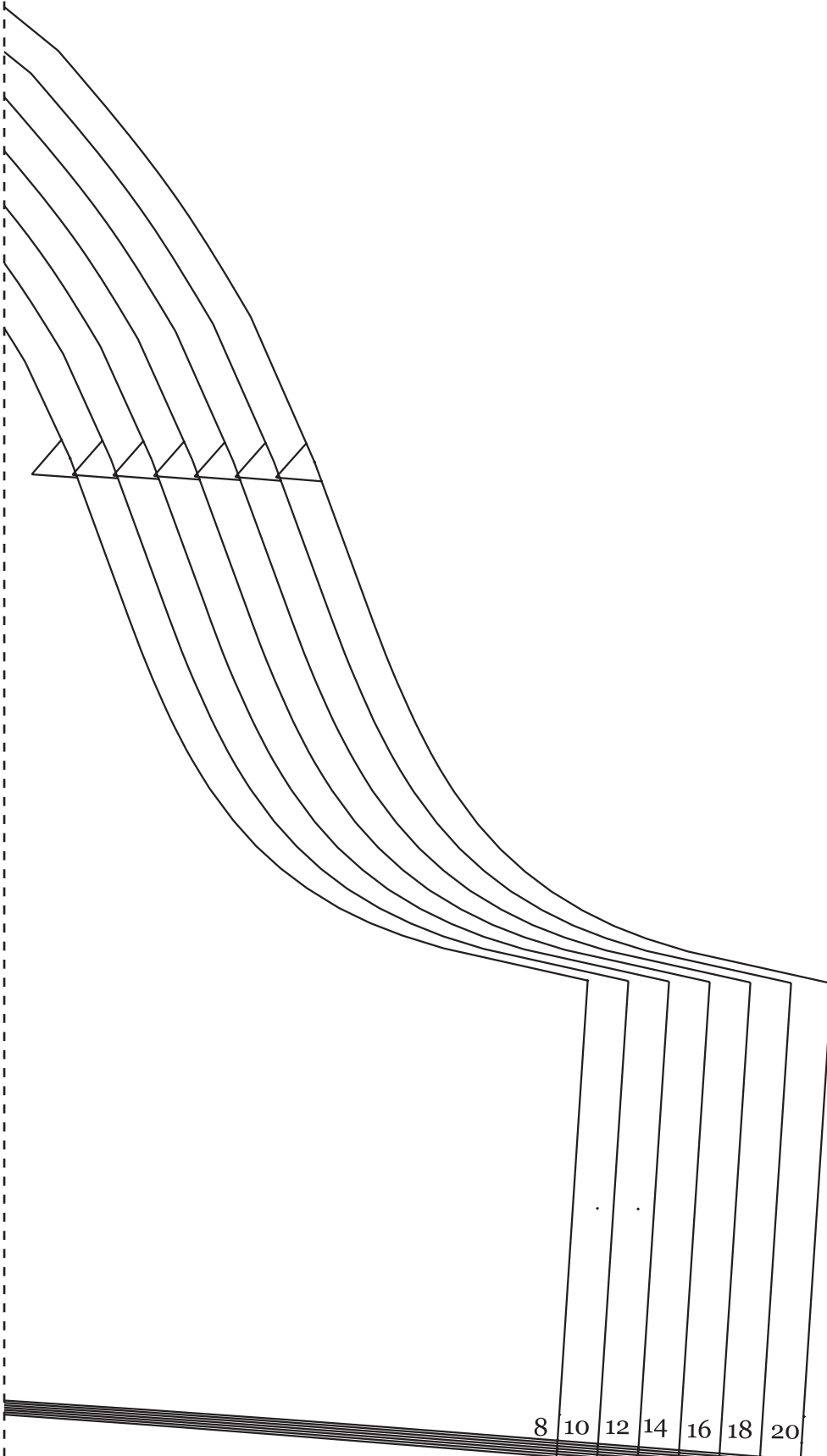


GATHER

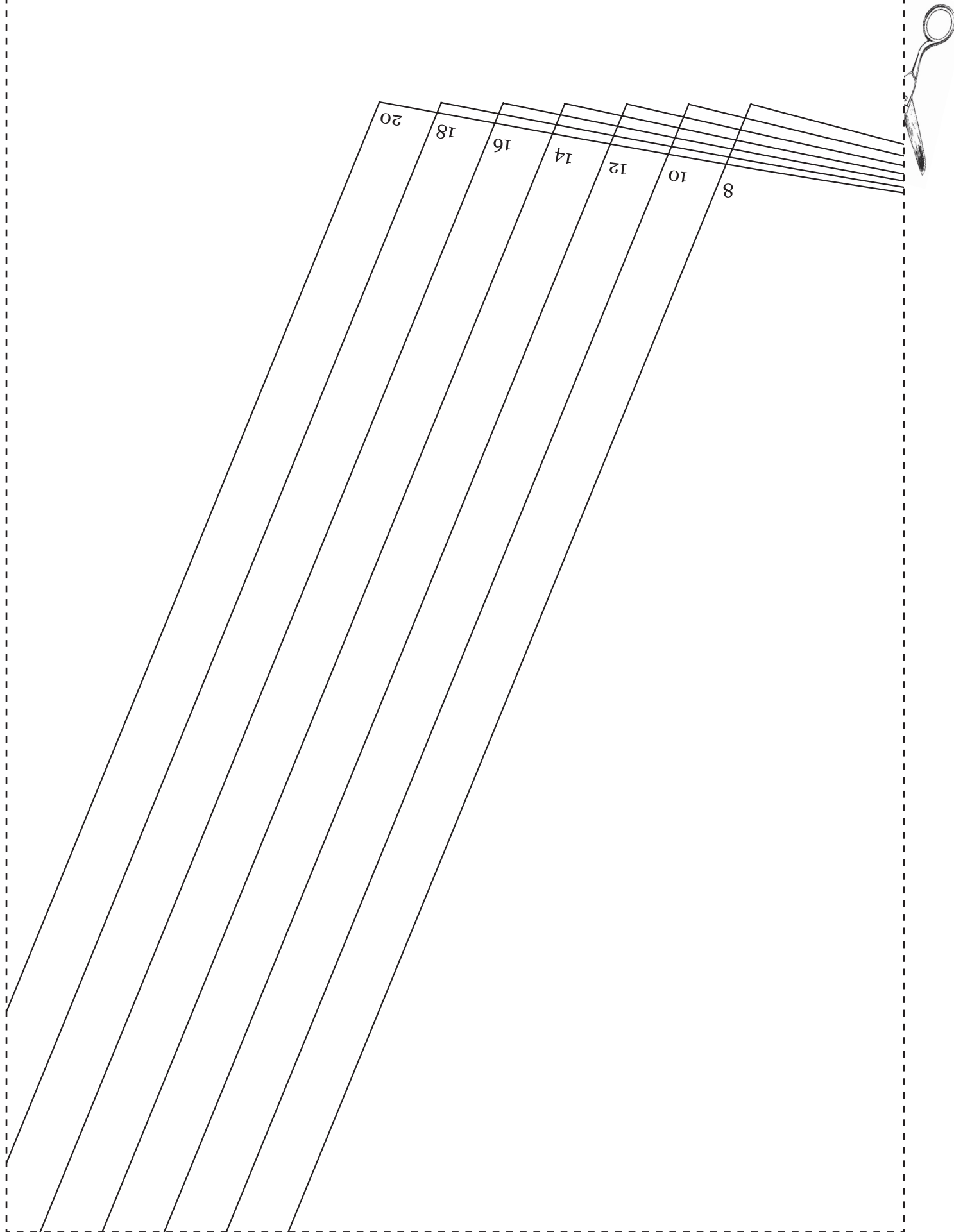
Straight grain

CLASSIC TEA DRESS
SLEEVE
CUT TWO IN FABRIC

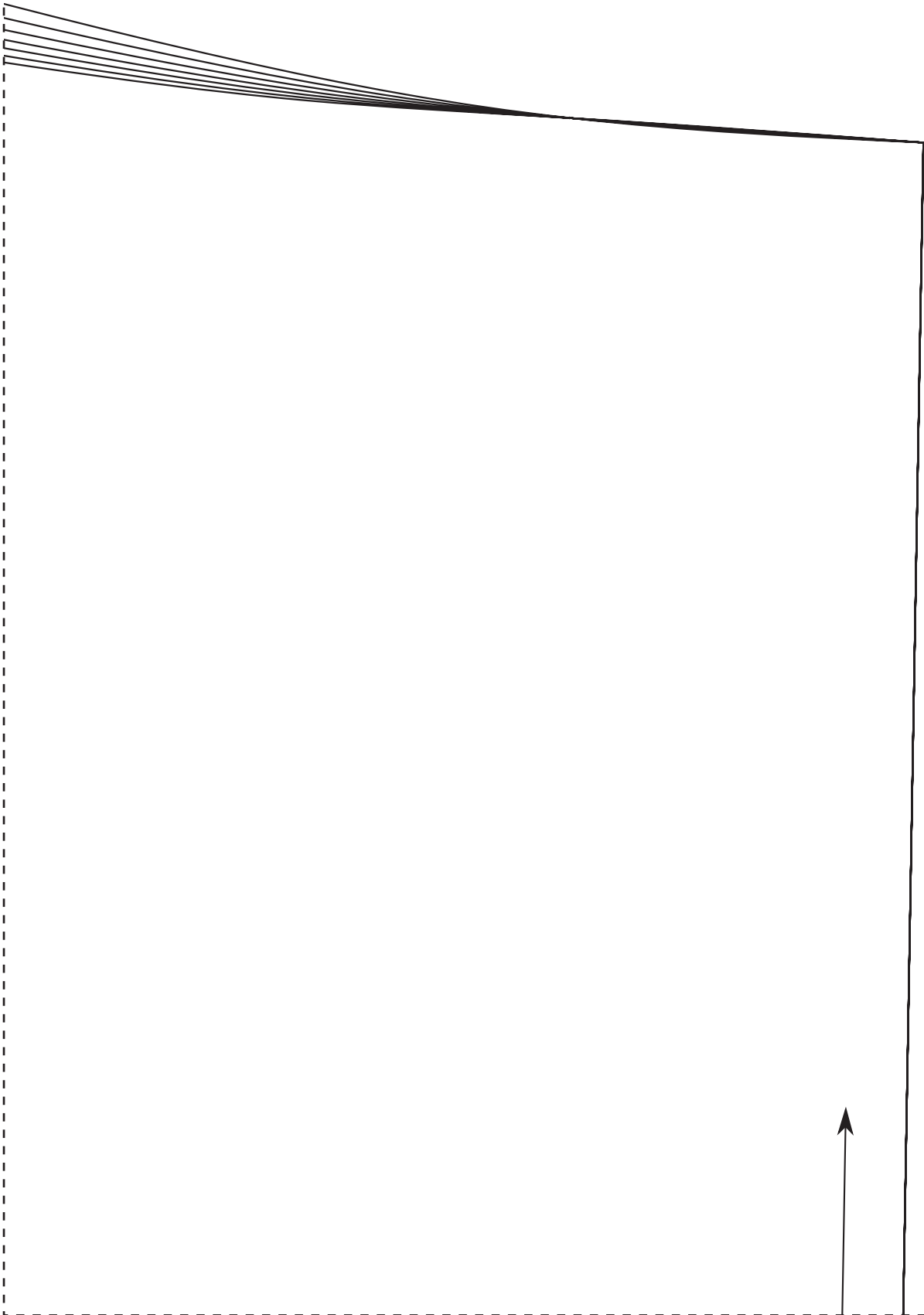
3



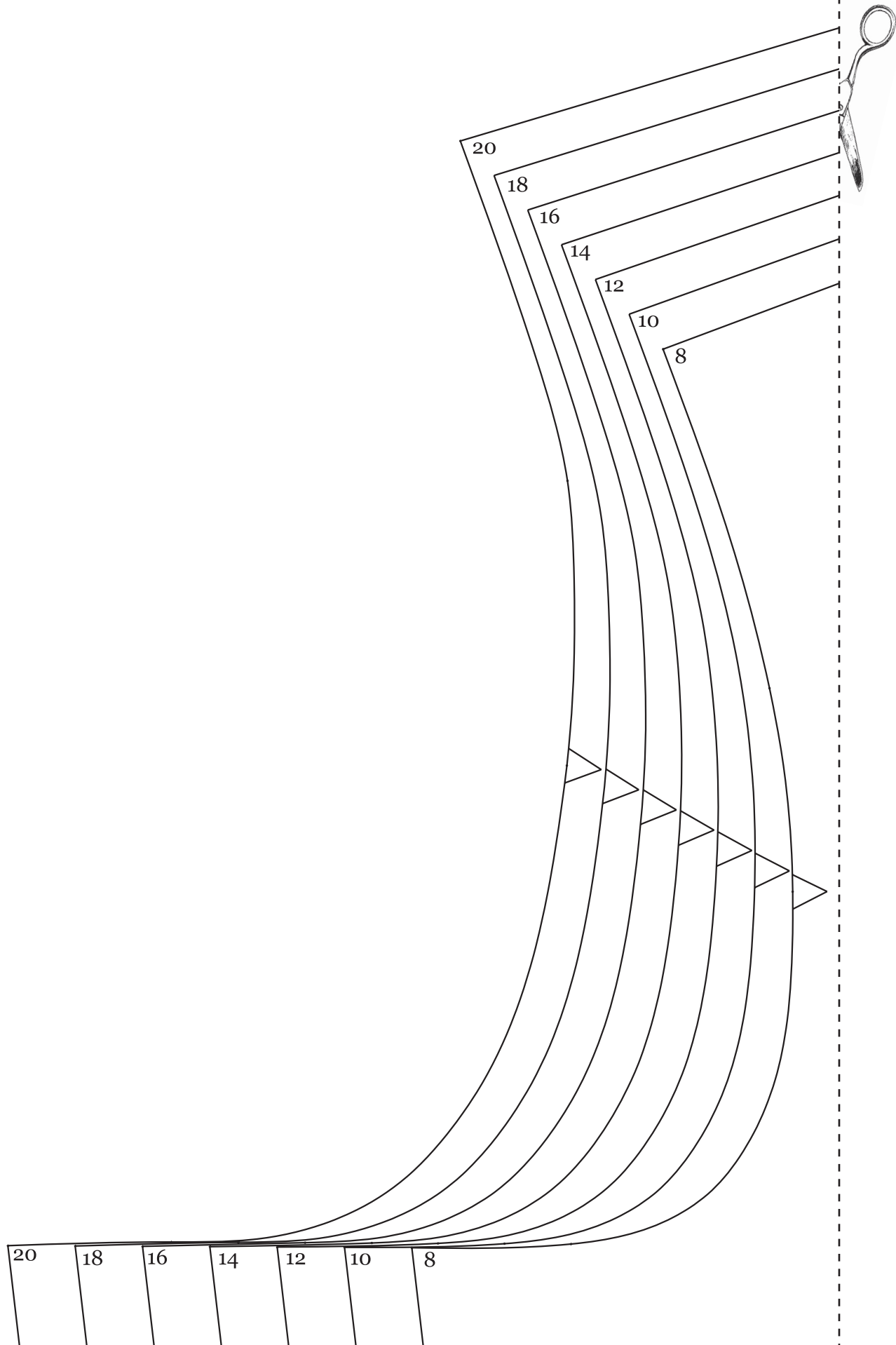
4



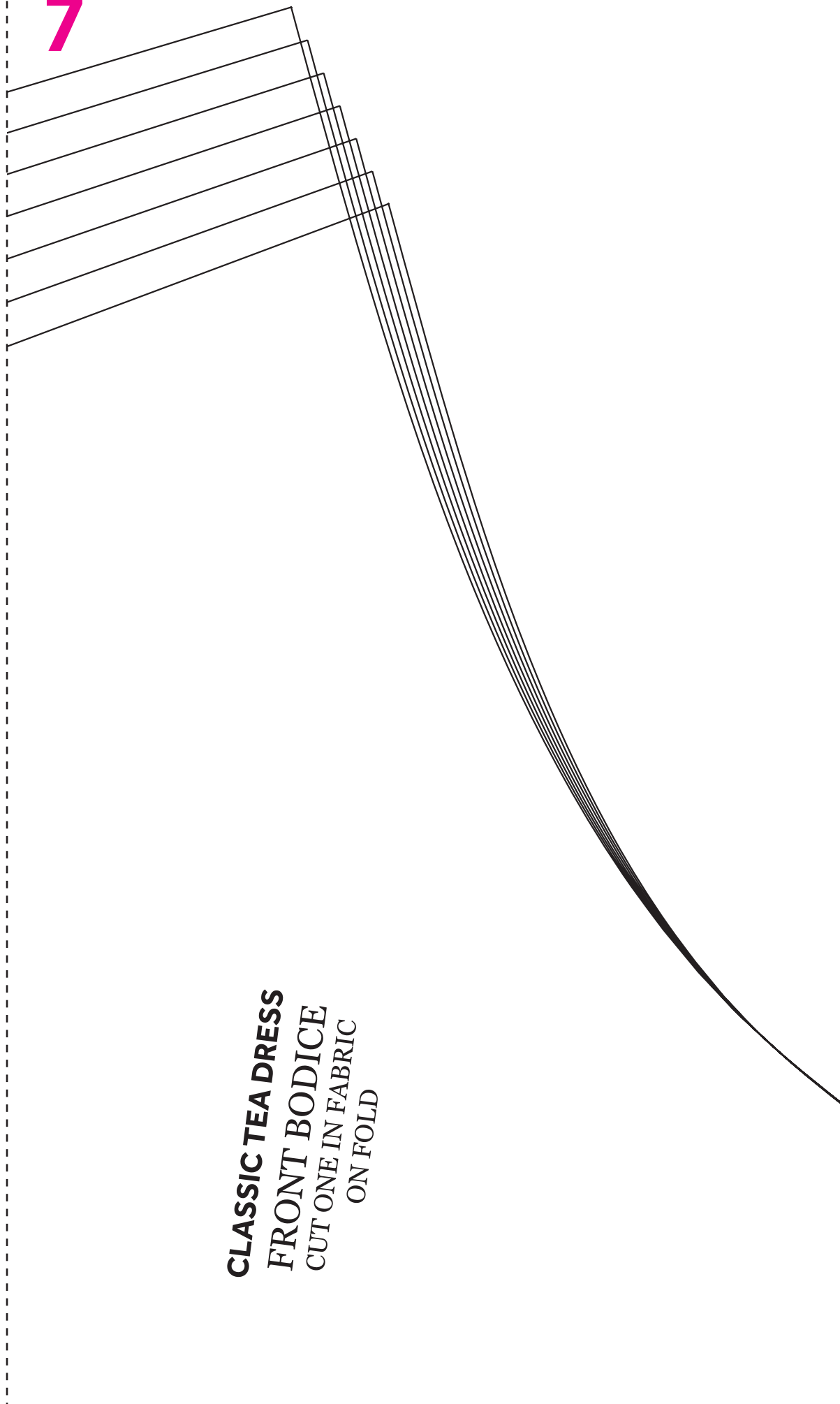
5



6



7



CLASSIC TEA DRESS
FRONT BODICE
CUT ONE IN FABRIC
ON FOLD





CLASSIC TEA DRESS

BACK SKIRT

CUT TWO IN FABRIC

NB. FLIPPED

9

10

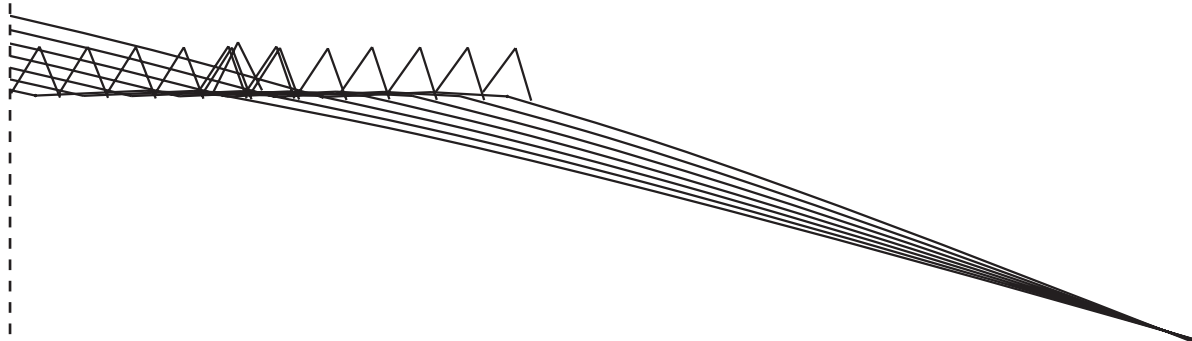
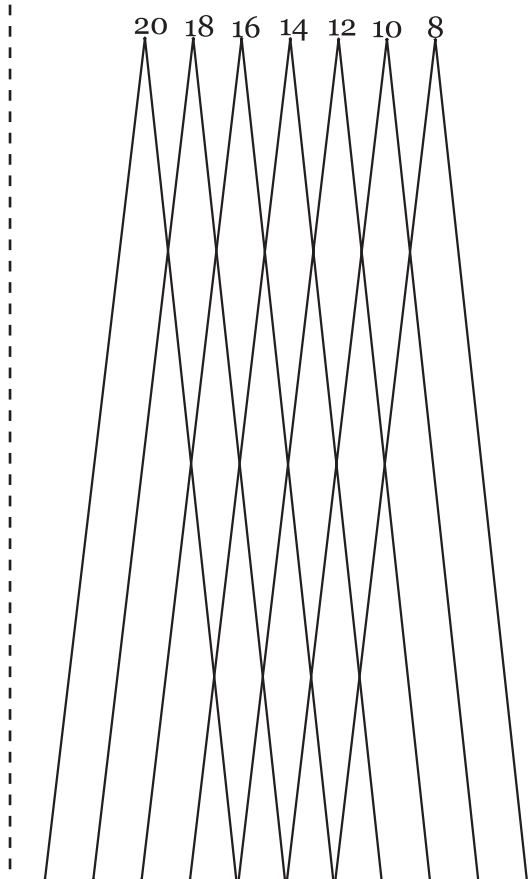


Straight grain

11



12

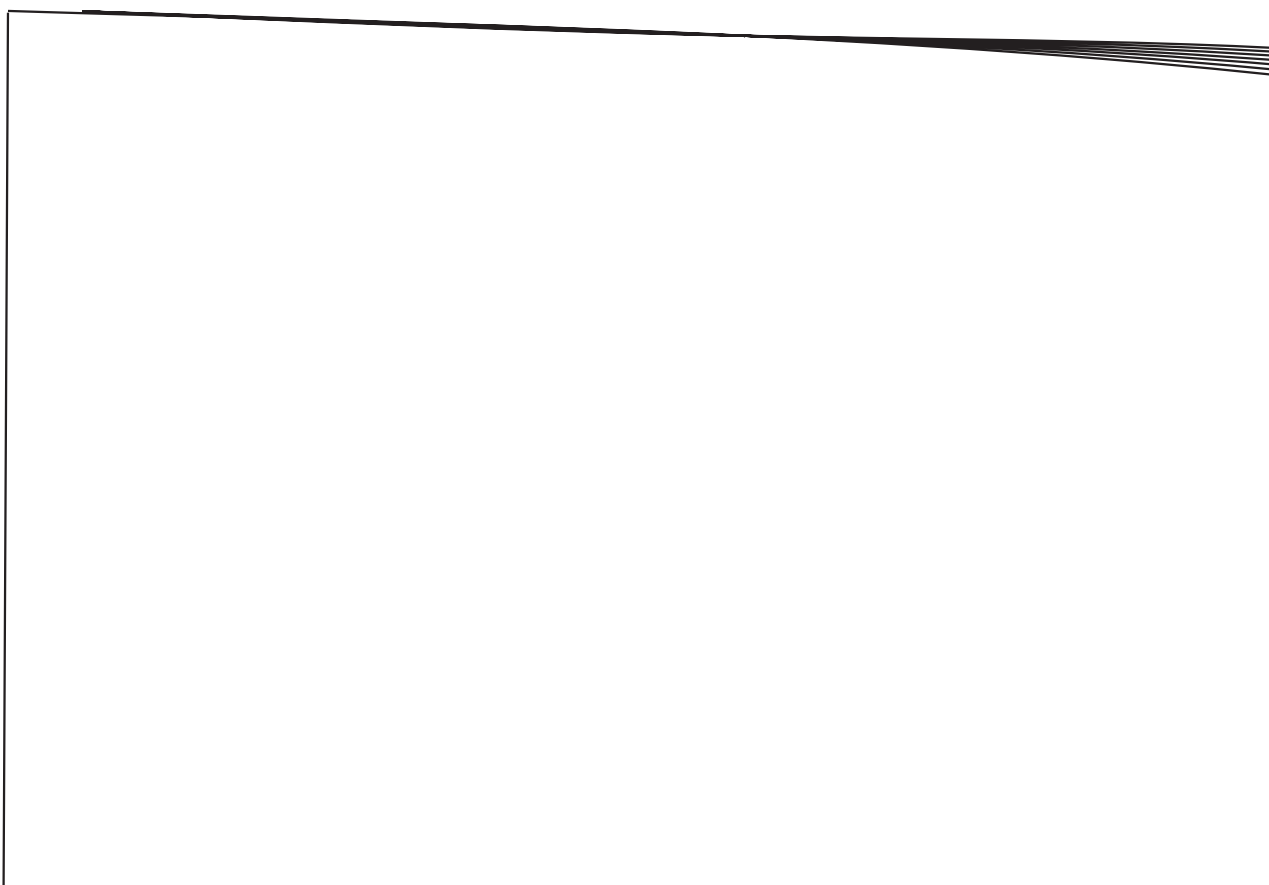
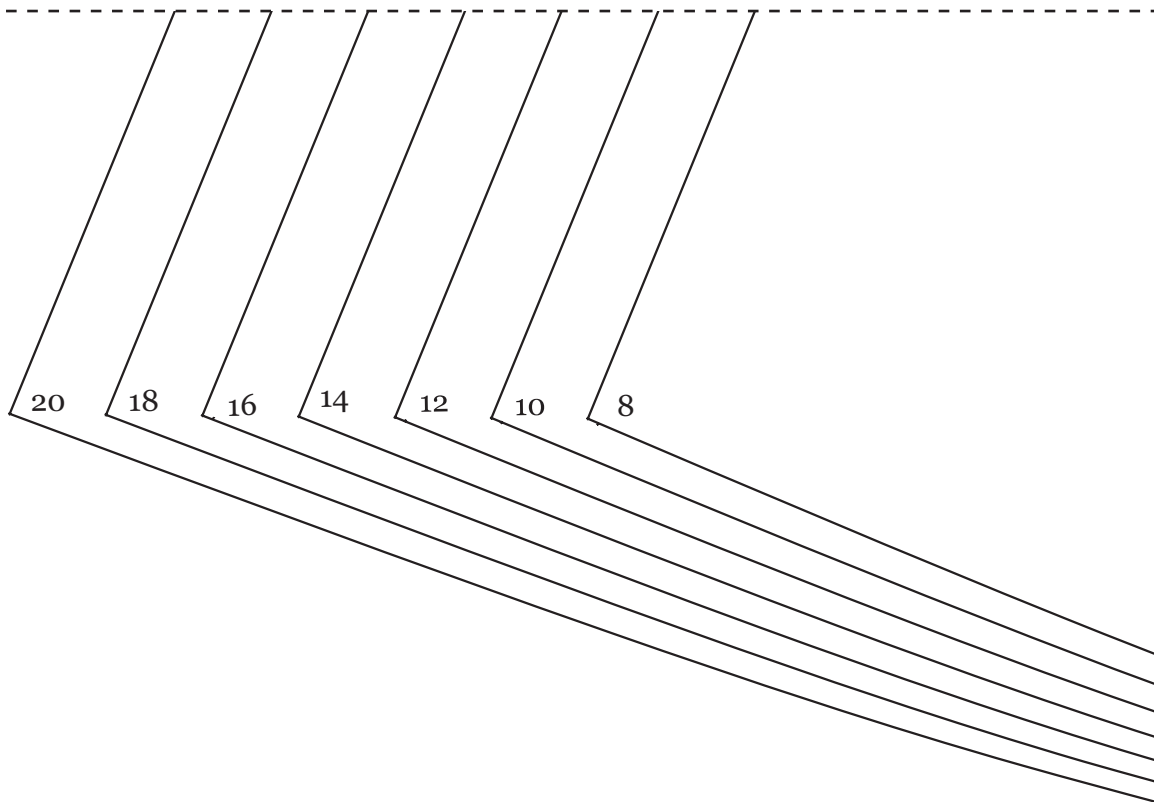


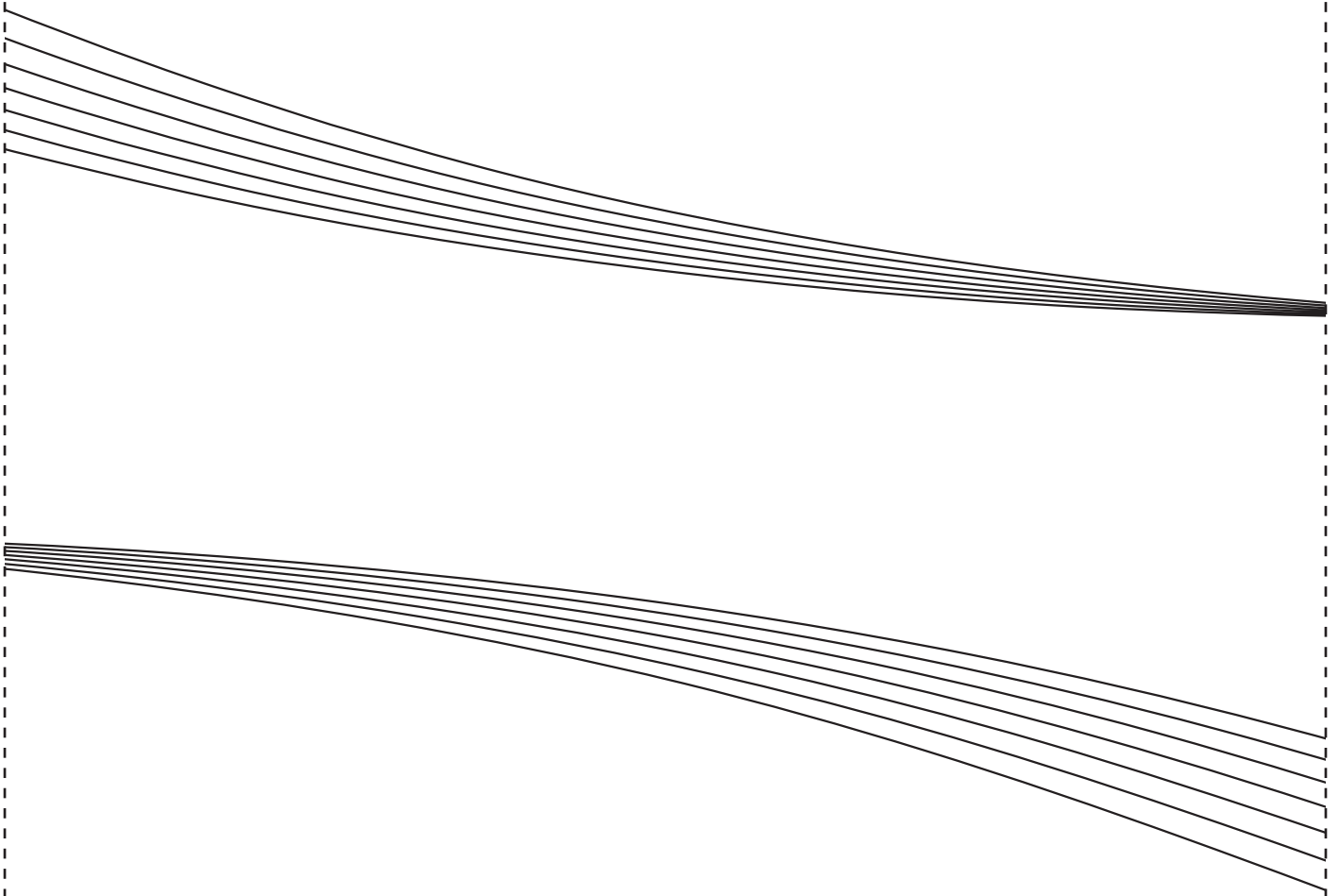
Straight grain

CUT ONE FABRIC ON FOLD

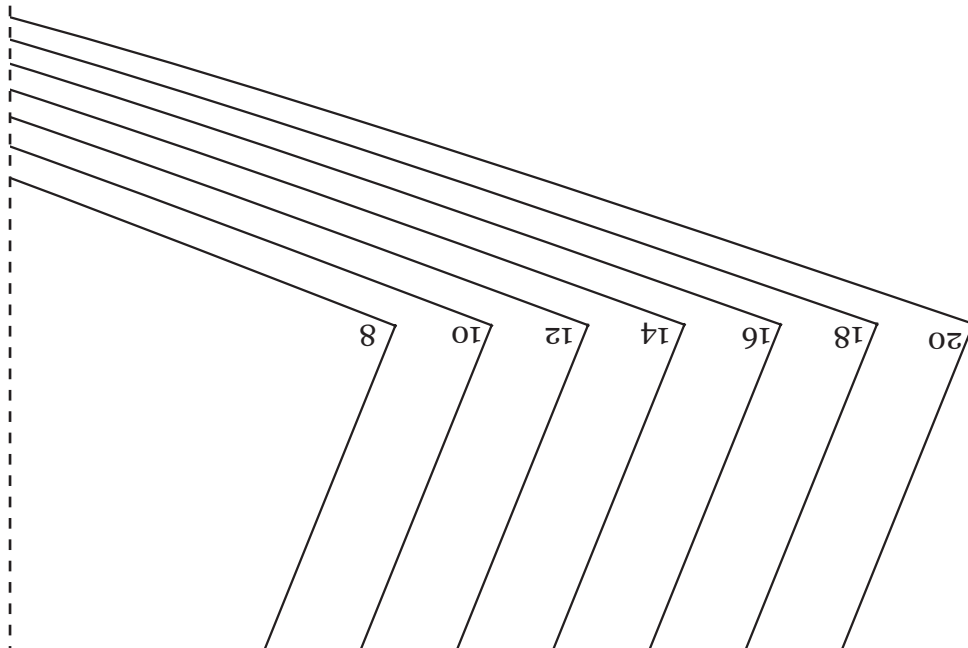


13

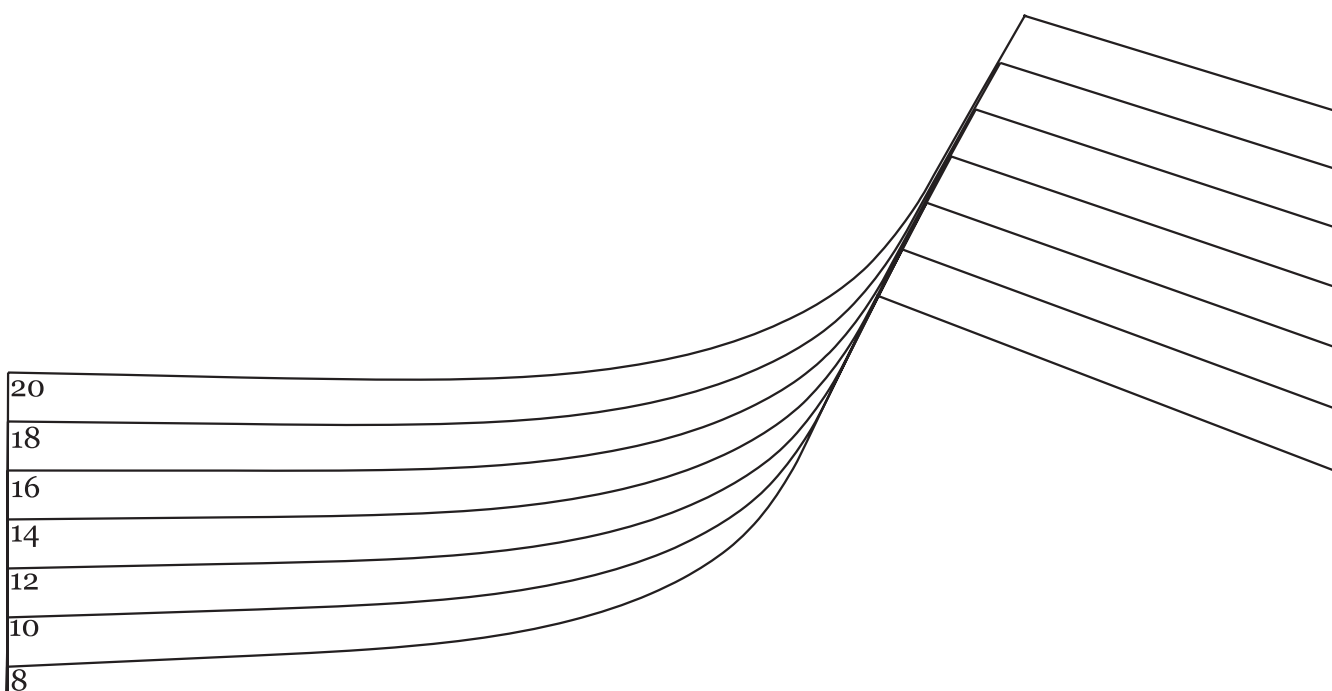




15

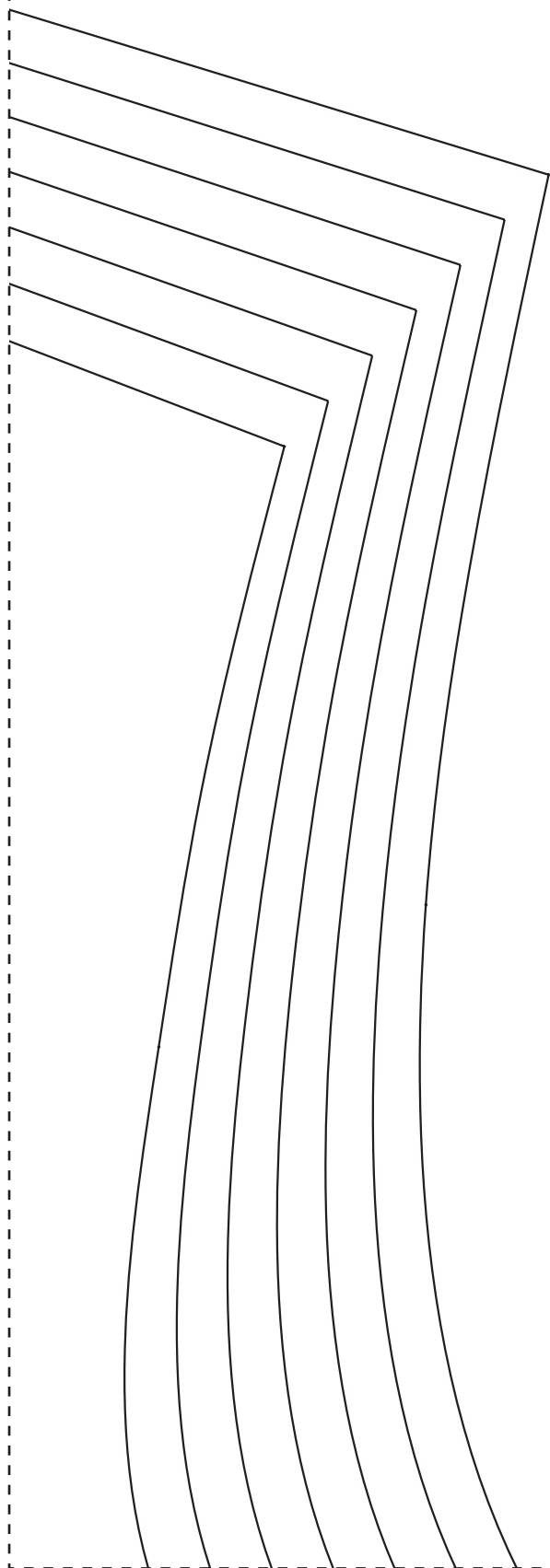


16



CLASSIC TEA DRESS
BACK BODICE
CUT TWO IN FABRIC





18



Straight grain

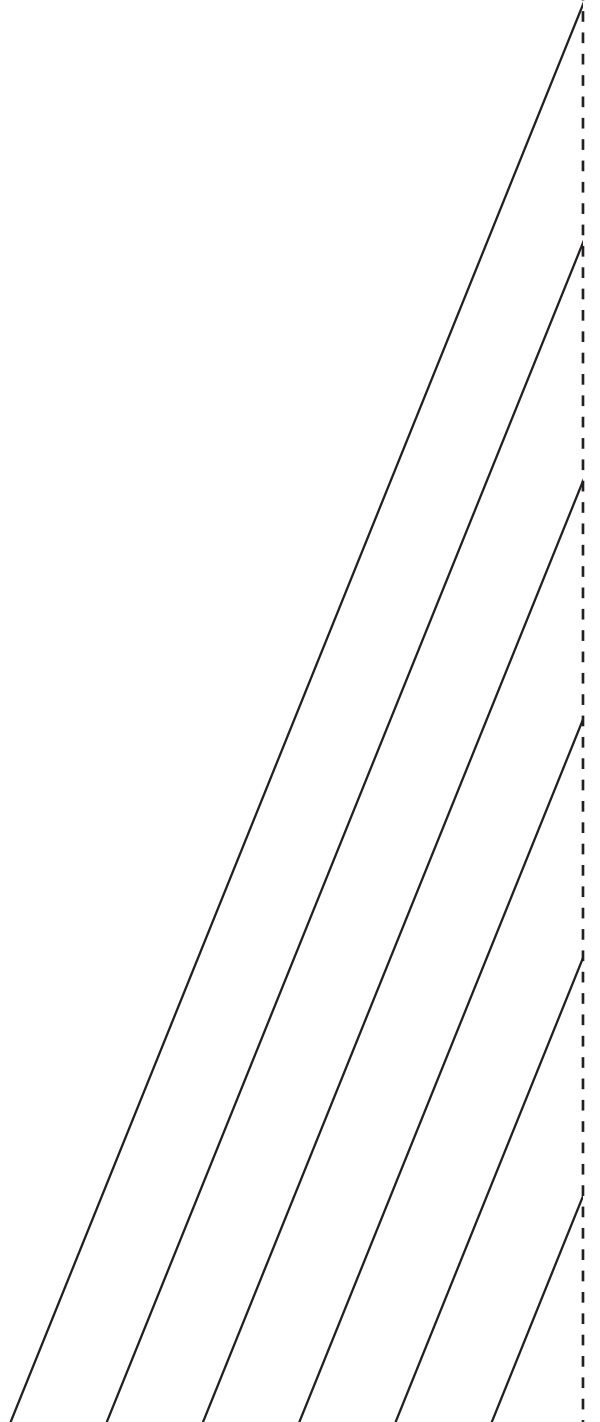


CUT ONE FABRIC ON FOLD

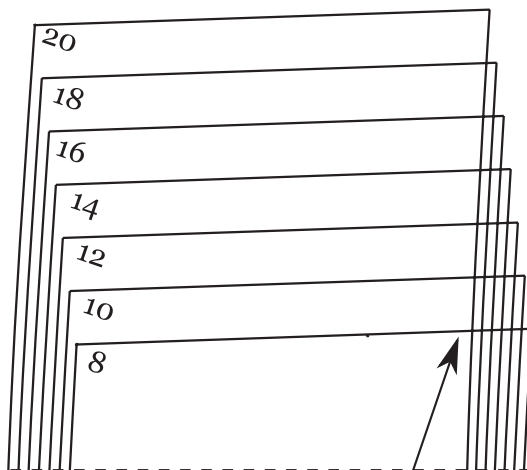




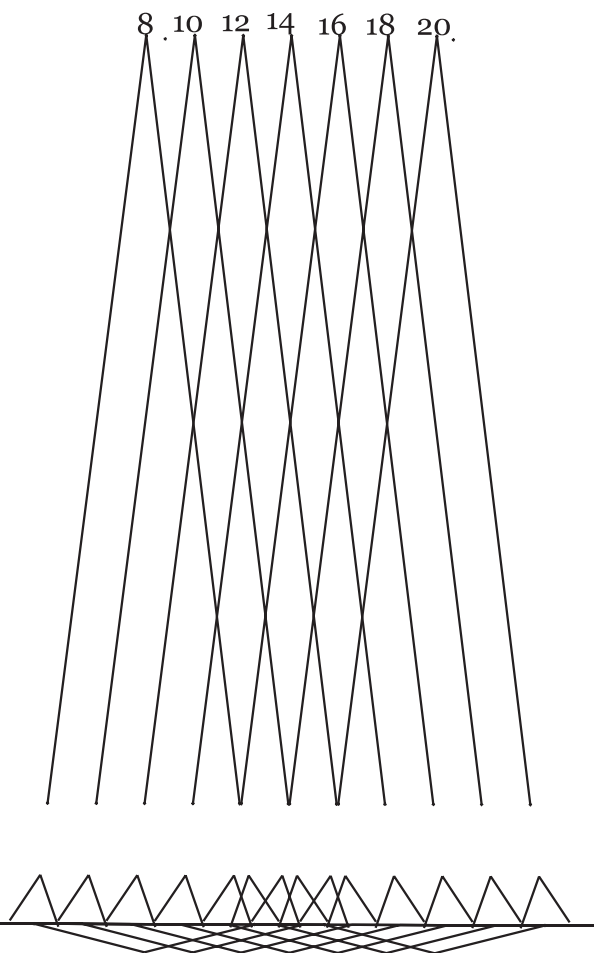
CLASSIC TEA DRESS
FRONT SKIRT
 CUT ONE IN FABRIC
 ON FOLD



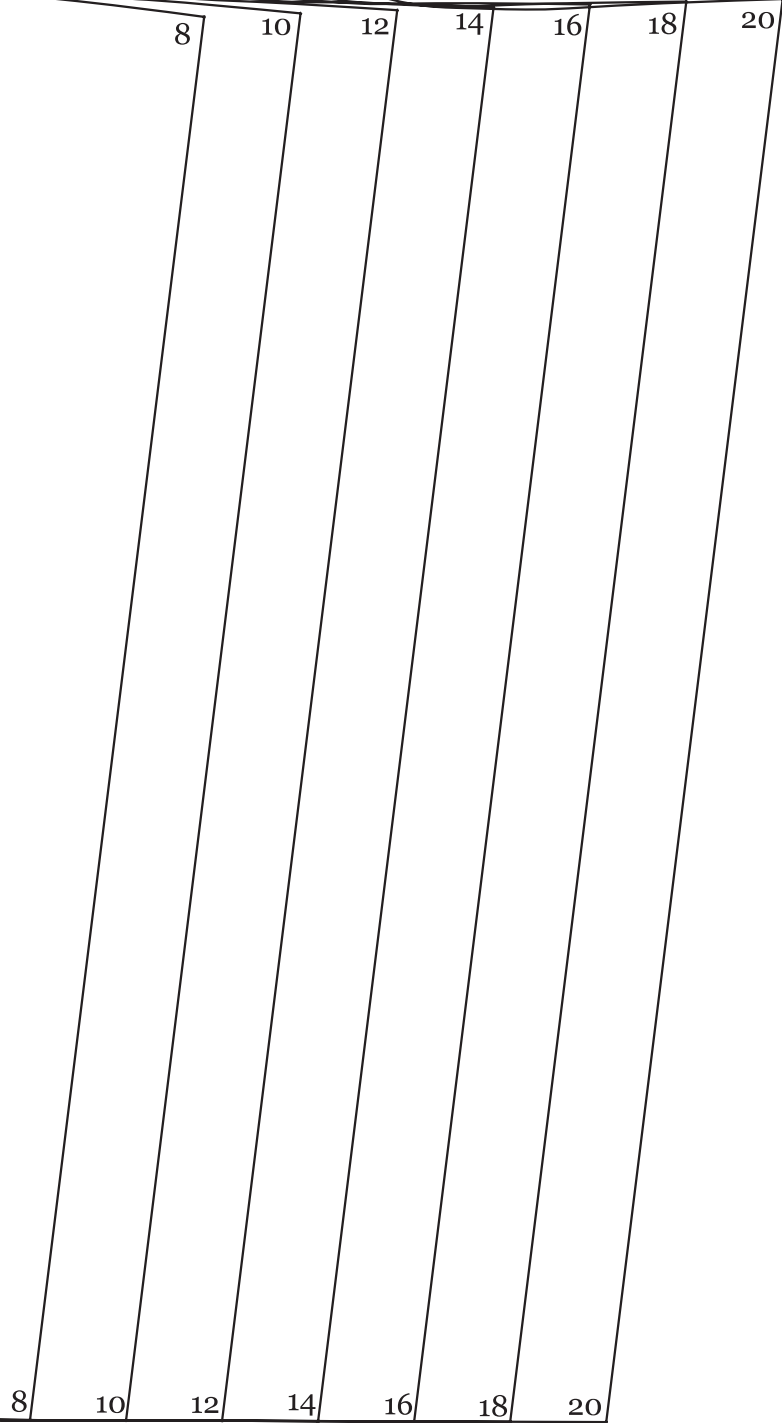
20



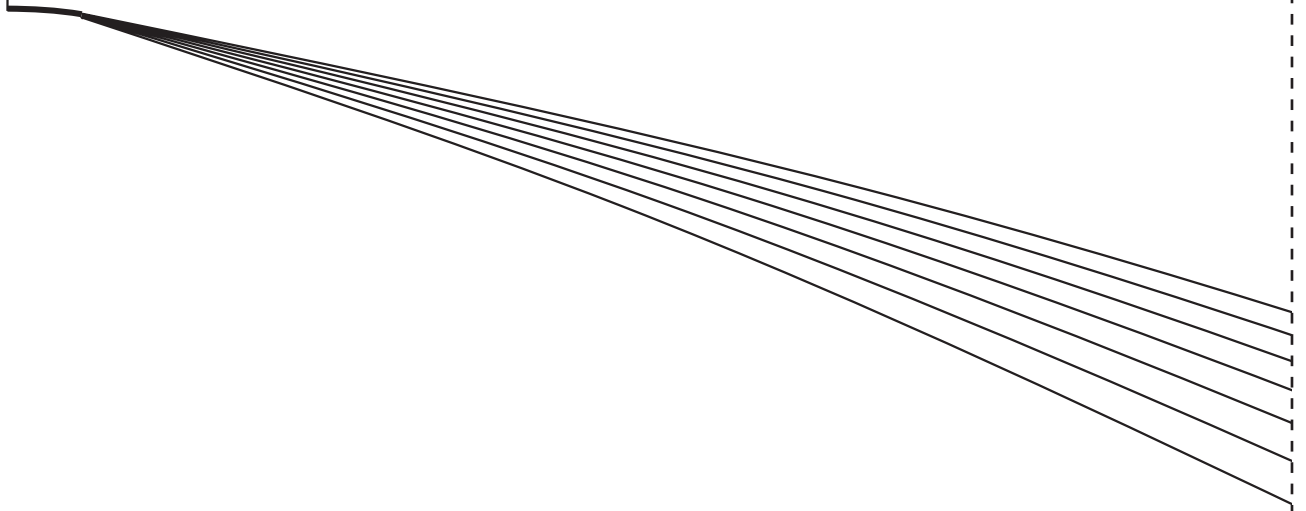
Straight grain



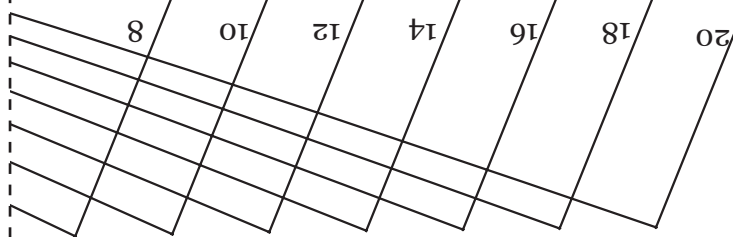
22



23



24





Straight grain

CLASSIC TEA DRESS
FRONT NECK FACING
 CUT ONE IN FABRIC
 CUT ONE IN INTERFACING
 ON FOLD

CUT ONE FABRIC ON FOLD

CLASSIC TEA DRESS
BACK NECK FACING
 CUT TWO IN FABRIC

Straight grain

8

20