

S-M-L



Title: Josie dress

Designer: Jennifer Paganelli

Magazine page: 18

SIZE AND AGE	X-SMALL 2-3	SMALL 4-5	MEDIUM 6-7	LARGE 8-10	X-LARGE 12-14
HEIGHT	84cm-99cm	99cm-114cm	114cm-130cm	130cm-145cm	145cm-157cm
CHEST	51cm-56cm	57cm-62cm	63.5cm-67cm	68.5cm-73.5cm	73.5cm-81cm
WAIST	51cm-53cm	53cm-56cm	52cm-58.5cm	54.5cm-61cm	60cm-66cm
HIP	53cm-58cm	60cm-65cm	66cm-70cm	71cm-76cm	79cm-84cm
HEAD CIRCUMFERENCE	49.5cm-51cm	51cm-52cm	52cm-53cm	53cm-54.5cm	54.5cm-56cm
WEIGHT	13.5kg-16.5kg	16.5kg-21kg	20kg-25kg	24.5kg-33.5kg	34kg-43kg

ESSENTIALS

Printed mid-weight cotton fabric, 114cm wide by:

SIZE	XS	S	M	L	XL
Bodice, bodice lining and straps	45cm	45cm	70cm	70cm	70cm
Skirt	1m	1.2m	1.3m	1.5m	1.6m
Waist tie	35cm	35cm	35cm	35cm	35cm

- Coordinating lining, 114cm wide
- Polyester coil zip, 30.5cm
- Coordinating thread

NOTE: The skirt length measurements are generous; adjust as needed, depending on where you want the hem to fall.

CUTTING GUIDE FROM SKIRT FABRIC FOR THE BACK SKIRT:

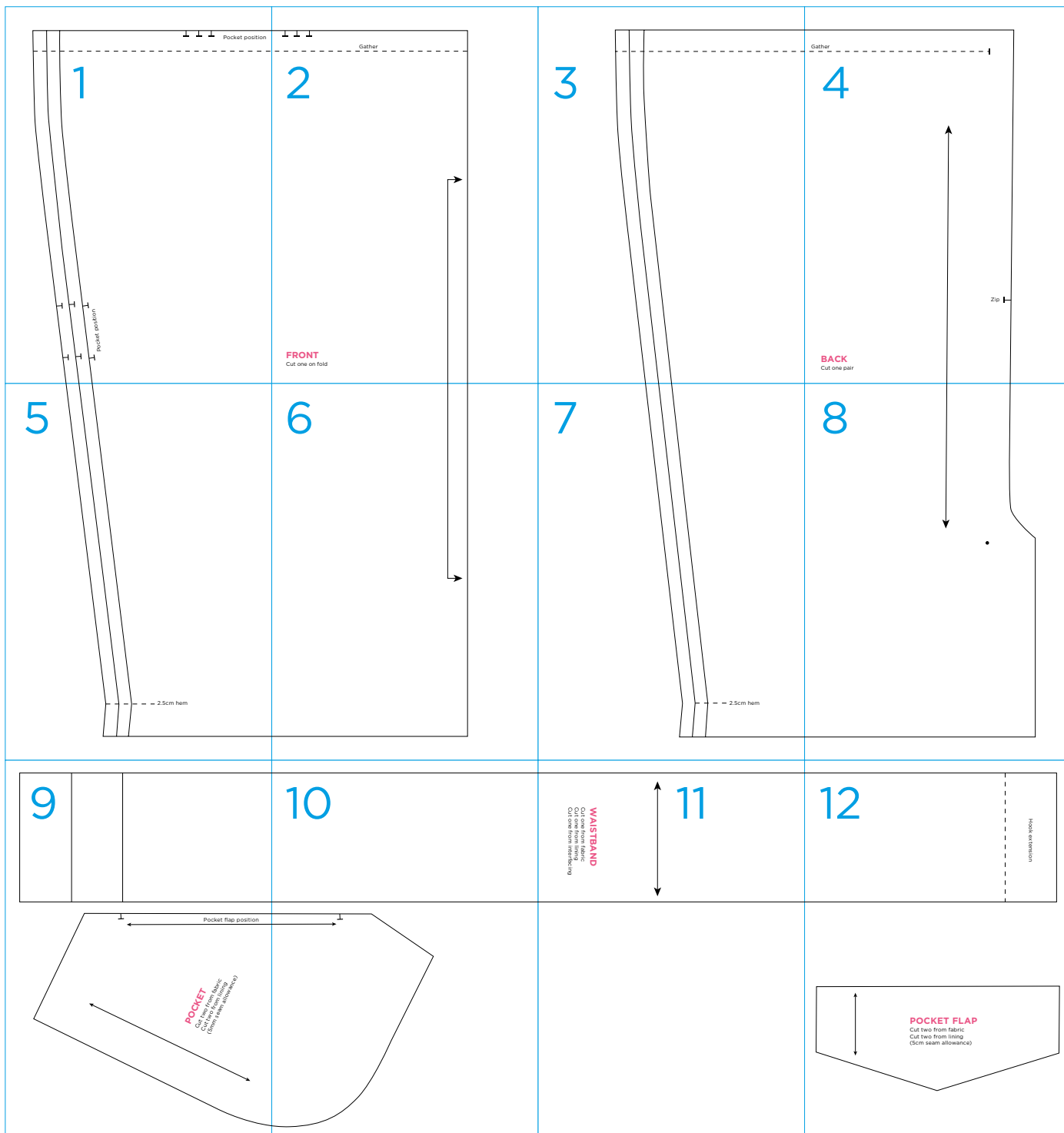
SIZE	XS	S	M	L	XL
Cut two rectangles (L x W)	46cm x 39cm	53cm x 42.5cm	61cm x 46cm	68cm x 49cm	75cm x 53cm

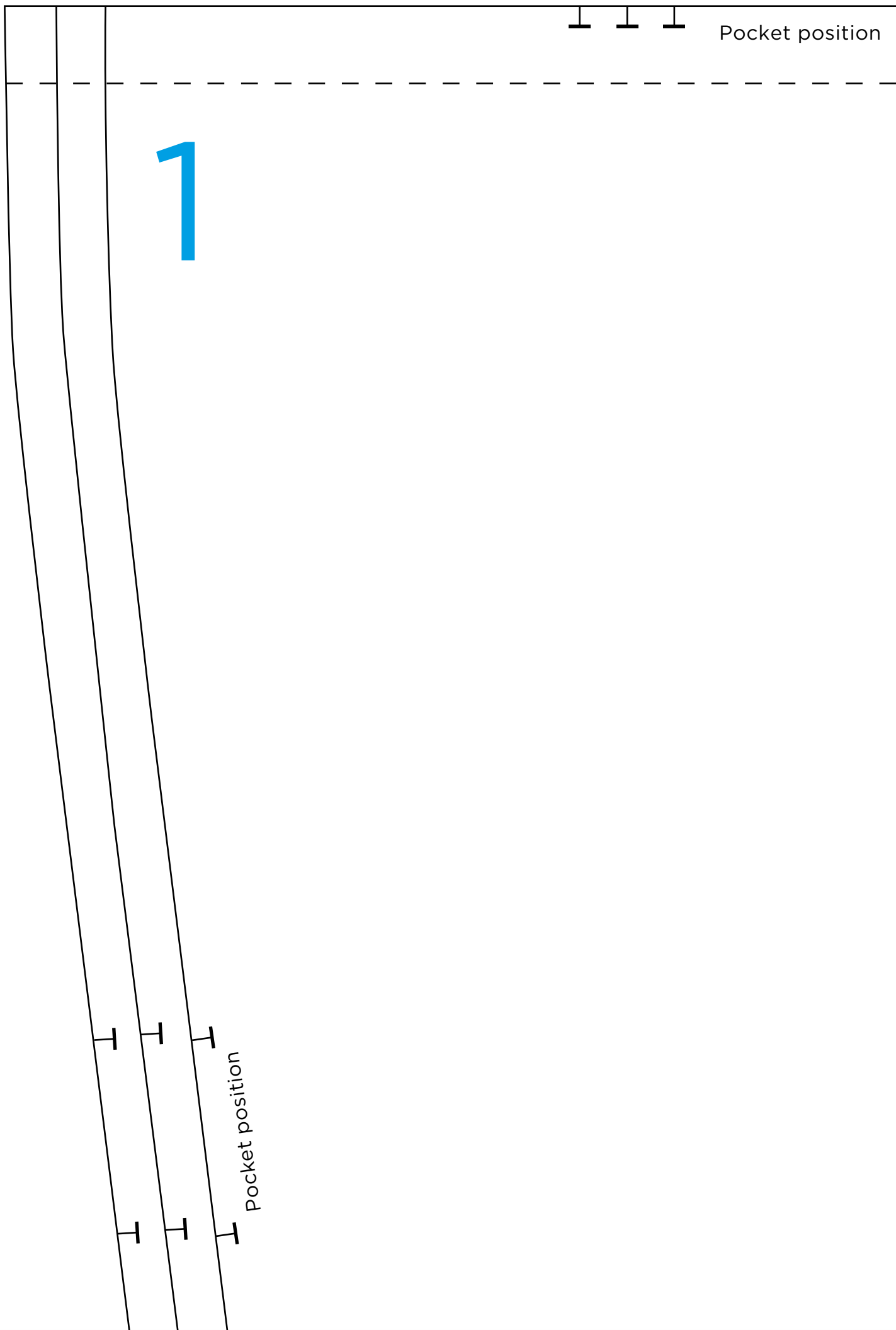
FOR THE FRONT SKIRT:

SIZE	XS	S	M	L	XL
Cut one rectangle (L x W)	46cm x 76cm	53cm x 82.5cm	61cm x 89cm	68cm x 95cm	75cm x 1.04m

FROM BODICE FABRIC:

- Fold fabric in half, lining up selvedge edges. Cut one bodice front piece, on the fold. After cutting out the bodice front piece, clip a 6mm notch at the top and lower edge of the fold and at the indicated notches for the gathering.
- Cut one bodice lining piece, on the fold. Clip a 6mm notch at the upper and lower edges of the fold.
- Cut four bodice back pieces. You want two mirror image sets, one for the outside of the dress and one for the lining.
- Clip a 6mm notch at the bodice back upper edge, where indicated on the pattern.





1

Pocket position

Pocket position

Gather

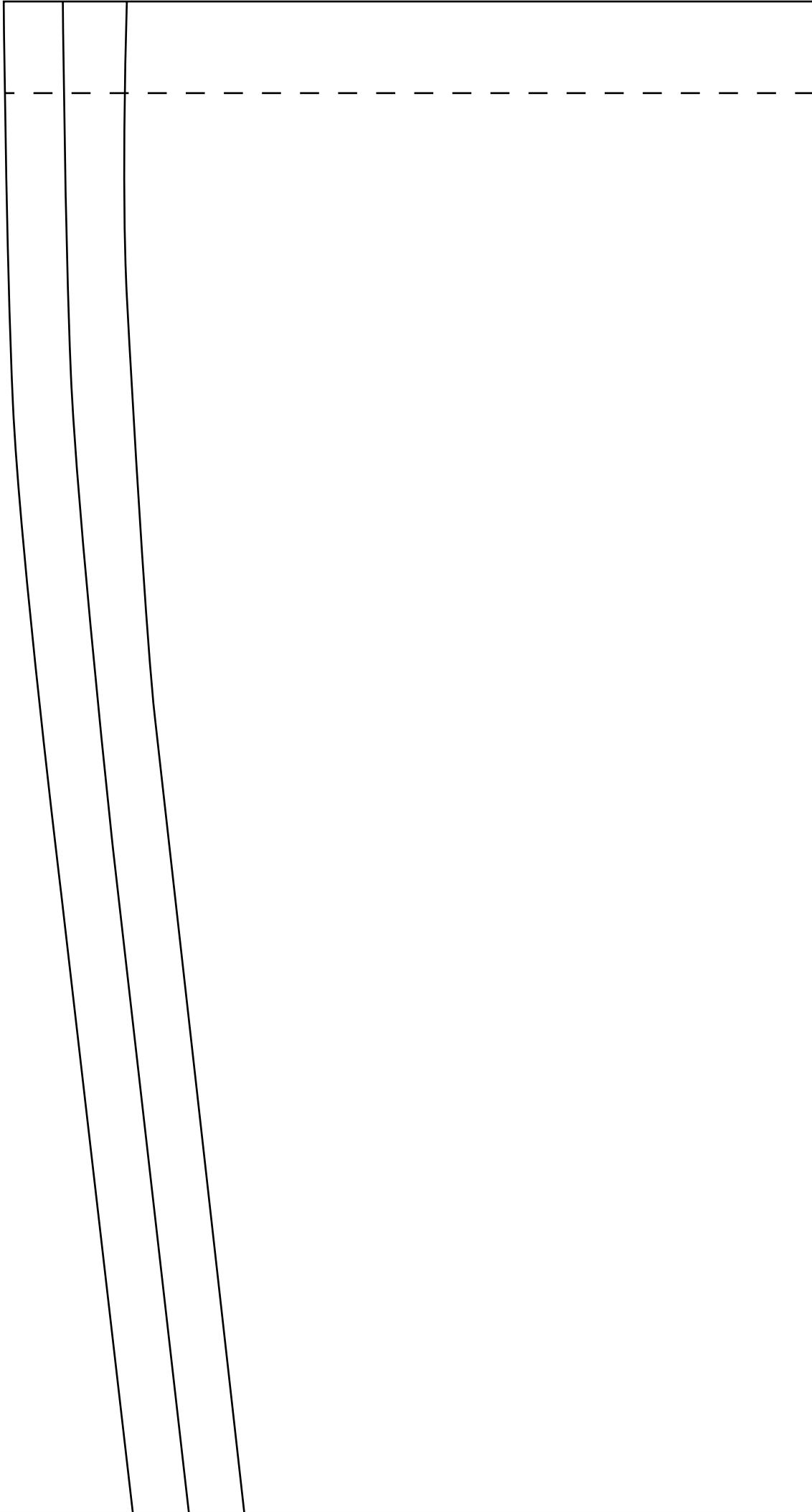
2



FRONT

Cut one on fold

3



Gather

4

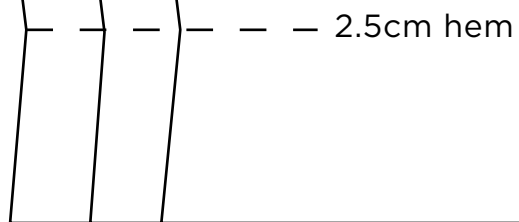


Zip

BACK

Cut one pair

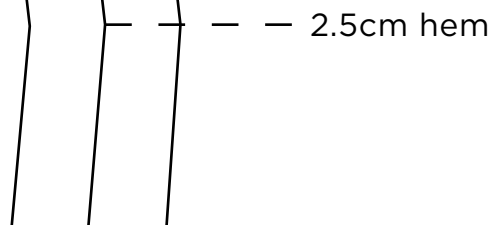
5



6



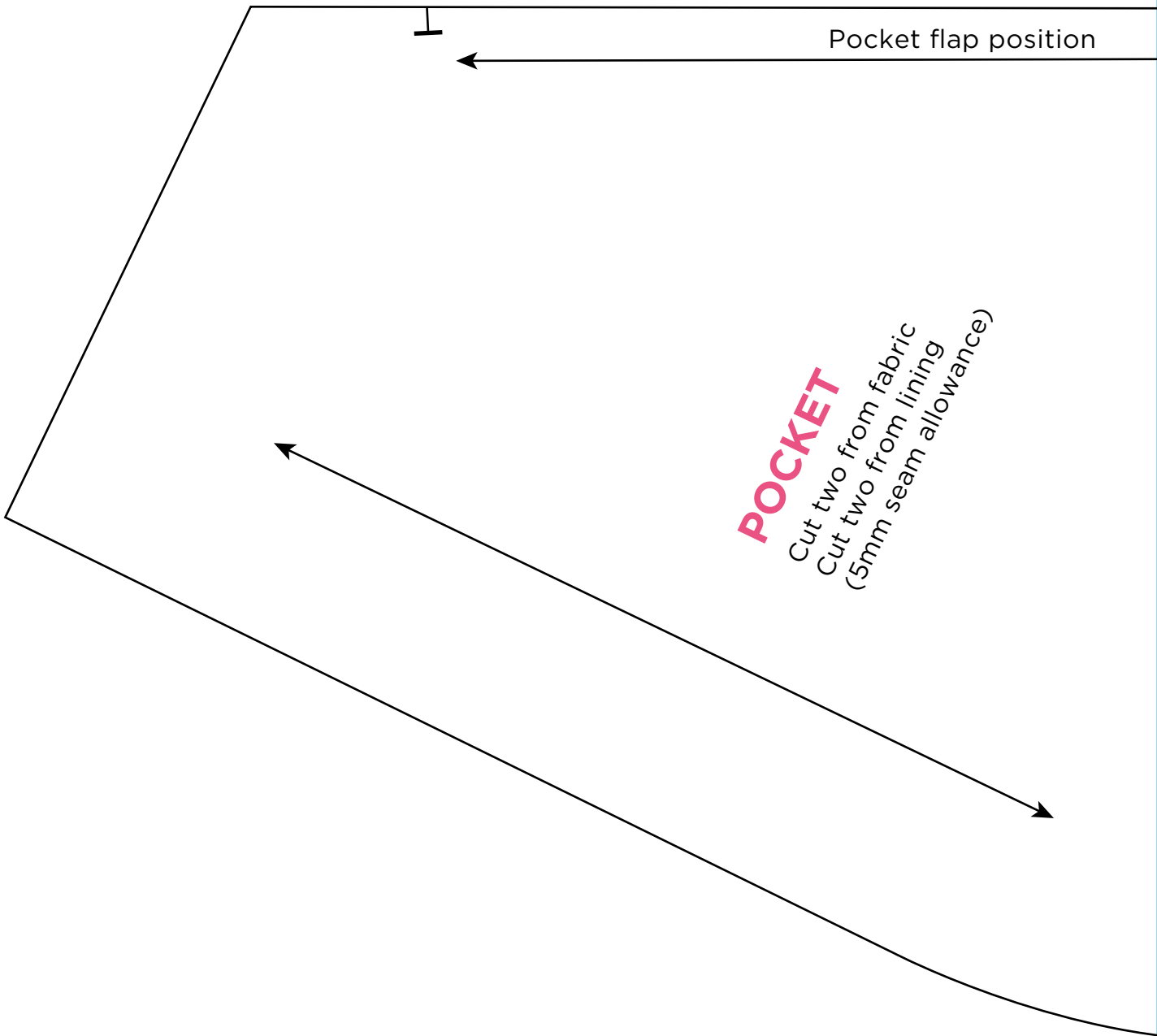
7



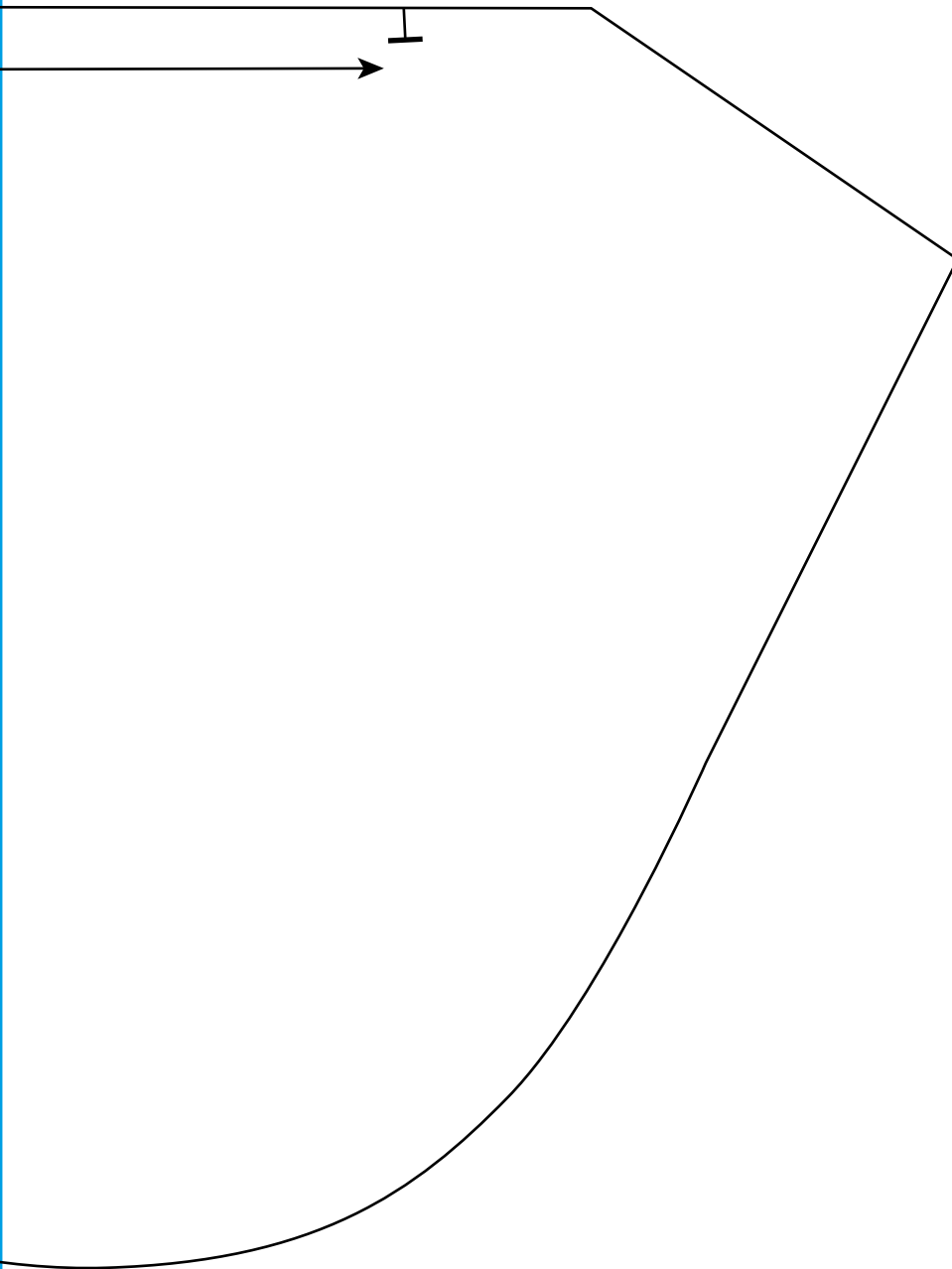
8



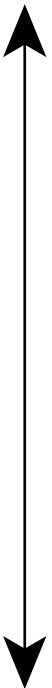
9



10



11



WAISTBAND

- Cut one from fabric
- Cut one from lining
- Cut one from interfacing

12

Hook extension

POCKET FLAP

Cut two from fabric
Cut two from lining
(5cm seam allowance)

